

COUNTY BREVARD
 FIELD PALM BAY
 LOCATION HARRIS CORP. IW NO. 1
 WELL HARRIS CORP. IW NO. 1
 COMPANY ALSAY, INC.
 COMPANY ALSAY, INC.
 WELL HARRIS CORP. IW NO. 1
 FIELD PALM BAY
 COUNTY BREVARD STATE FLORIDA

Other Services:
 DTL/SFL/GR
 CBL/VDL

Permanent Datum: PAD LEVEL Elev.: -
 Log Measured From: PAD LEVEL Fr. Above Perm. Datum
 Drilling Measured From: SAME G.L. -

Date	2-2-86	3-27-86
Run No.	ONE	TWO
Depth-Driller	2026	2332
Depth-Logger (Schl.)	2028	2330
Btm. Log Interval	1996	2296
Top Log Interval	373	2010
Casing-Driller	24 @ 370	9 5/8 @ 2020
Casing-Logger	373	2020
Bit Size	12 1/4	24
Type Fluid in Hole	SALT WATER	SALT WATER
Dens. Visc.	-	-
pH	-	-
Source of Sample	-	-
Rm @ Meas. Temp.	-	-
Rmf @ Meas. Temp.	-	-
Rmc @ Meas. Temp.	-	-
Source: Rmf Rmc	-	-
Rm @ BHT	-	-
Circulation Stopped	-	-
Logger on Bottom	-	-
Max. Rec. Temp.	8111 FT METERS	1700
Equip. Location	BUHEL	8193 FT METERS
Recorded by	BUHEL	BUHEL
Witnessed by	NESSRS NELFER-LARIG	MADEKSHO-BALLEY

FOLO HERE JL/JW The well name, location and borehole reference data were furnished by the customer.

Run No.	ONE	TWO	SCALE CHANGES			
Service Order No.	451643	451651	Type Log	Depth	Scale Up Hole	Scale Down Hole
Fluid Level						

EQUIPMENT DATA	
Sonic Panel No.	551
Sonic Cart No.	221
Sonic Sonde No.	306
IEM	1123
G.R. Cart No.	1288
G.R. Panel No.	65
DIS	504
DIC	1123
Centralizers: No.	
Type	
Standoffs: No.	
Type	
Time Const.-Sec.	
Speed - F.P.M.	

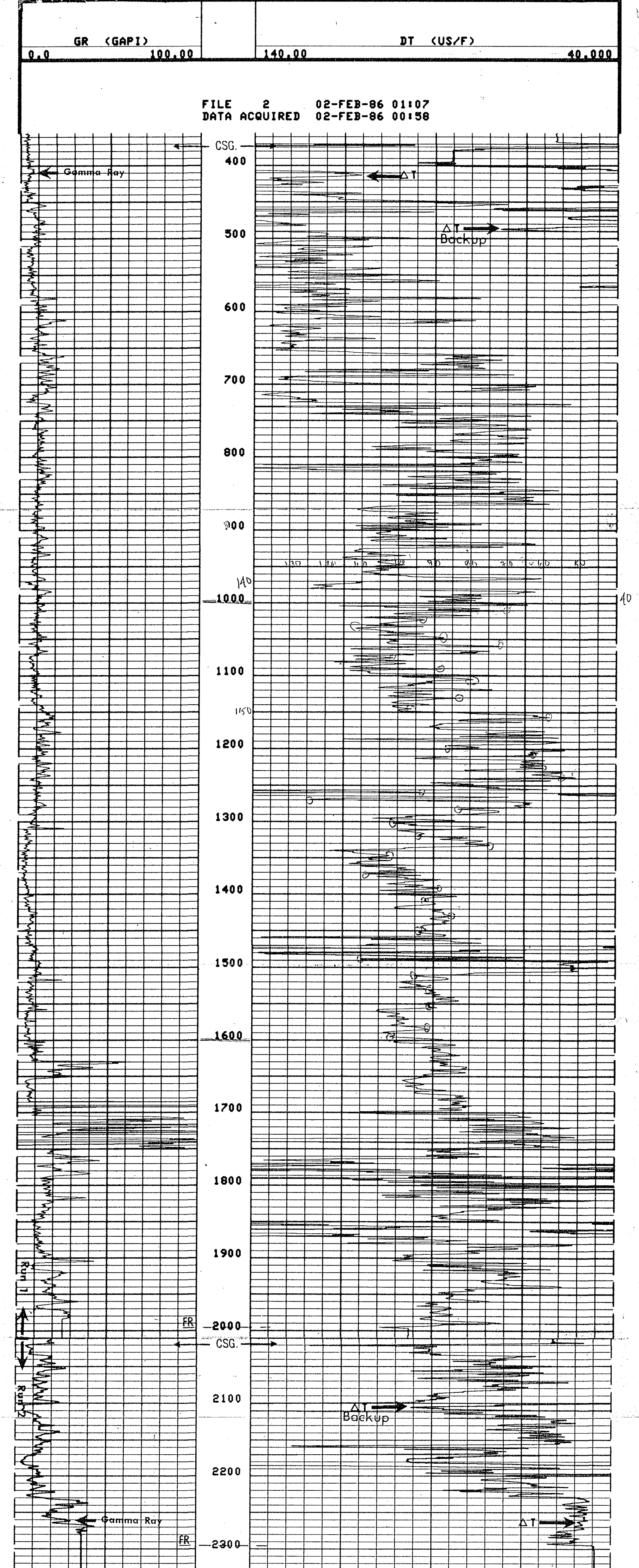
CALIBRATION DATA	
GR	BKG. CPS
	Source CPS
	Tc Sec

LOGGING DATA					
Porosity Selectors			Depth		
Δt_m	Δt_f	Cp	ϕ Scale	From	To

REMARKS
 WELL DRILLED BY REVERSE AIR METHOD.
 NO MUD SAMPLE POSSIBLE.
 RAN THREE 1.5 INCH STAND OFFS.

Velocity (ft/sec) = 1,000,000
 Interval Transit Time (microseconds per foot)

All interpretations are opinions based on inferences from electrical or other measurements and we cannot, and do not guarantee the accuracy or correctness of any interpretations, and we shall not, except in the case of gross or willful negligence on our part, be liable or responsible for any loss, costs, damages or expenses incurred or sustained by anyone resulting from any interpretation made by any of our officers, agents or employees. These interpretations are also subject to Clause 4 of our General Terms and Conditions as set out in our current Price Schedule.



FILE 2 27-MAR-86 18:48
 DATA ACQUIRED 27-MAR-86 18:32

GR (GAPI) scale: 0.0 to 100.00
 DT (US/F) scale: 140.00 to 40.000

COMPANY ALSAY, INC. SCHL. FR 2296
 WELL HARRIS CORP. IW NO. 1 SCHL. TD 2330
 FIELD PALM BAY DRLR. TD 2332
 COUNTY BREVARD STATE FLORIDA
 Elev: KB -
 DF -
 GL -

GR (GAPI)

DT (US/F)

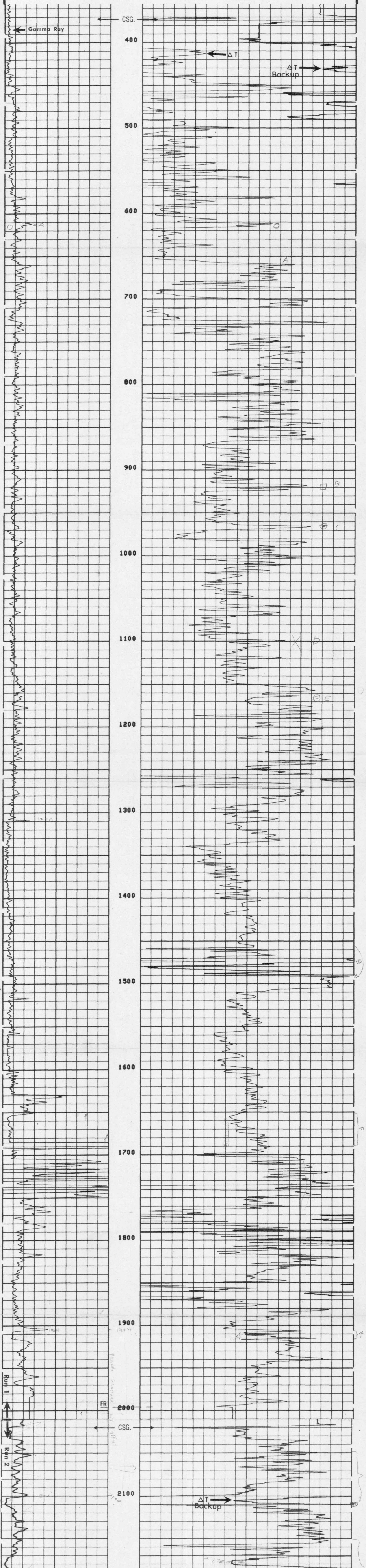
0.0 100.00

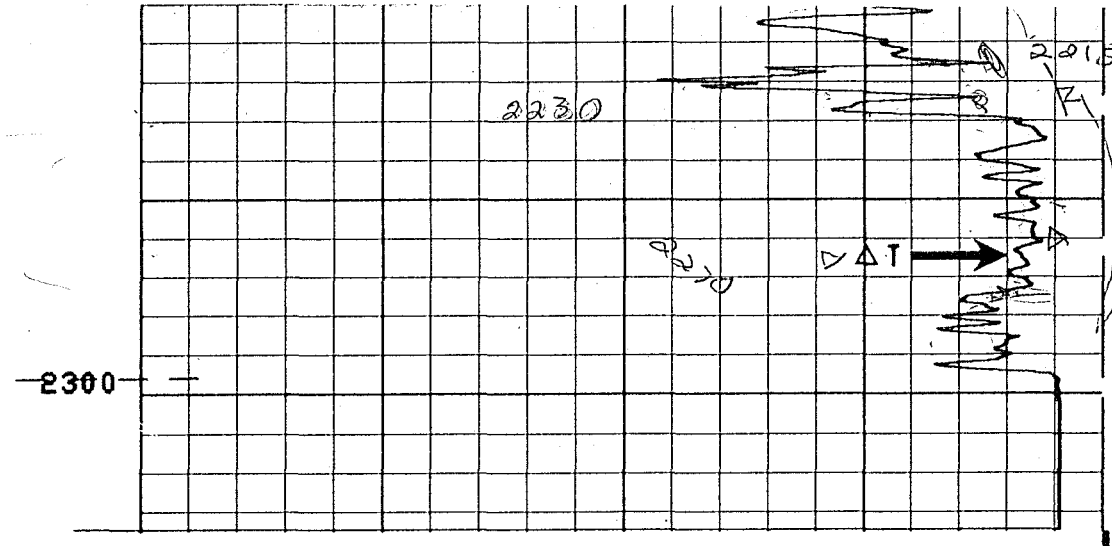
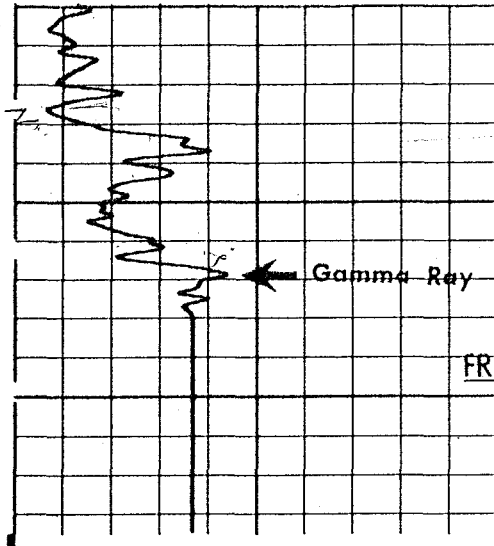
140.00

40.000

2

FILE 2 02-FEB-86 01:03
DATA ACQUIRED 02-FEB-86 00:58





3

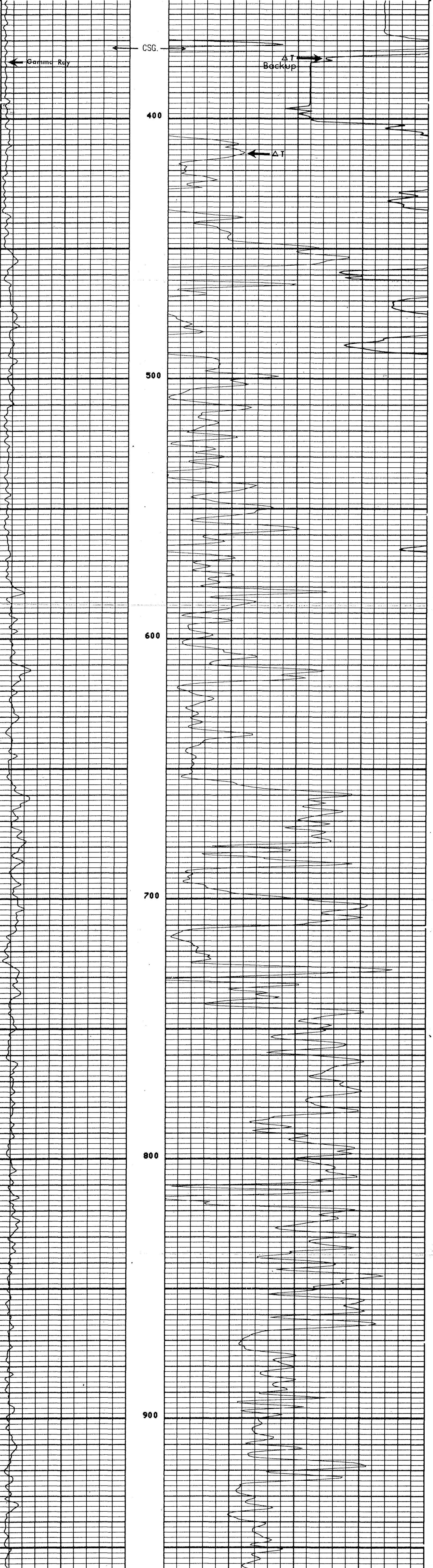
FILE 2 27-MAR-86 18:46
DATA ACQUIRED 27-MAR-86 18:32

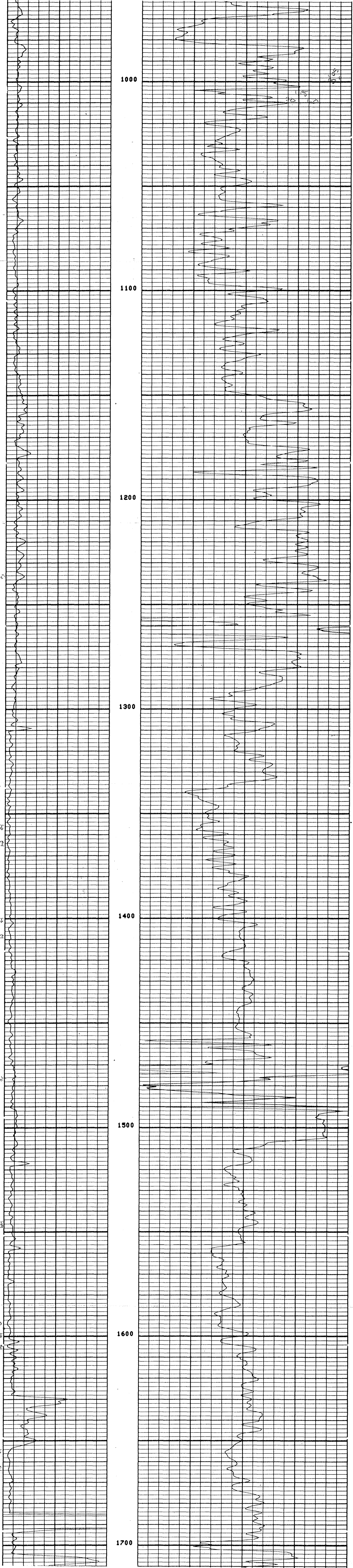
GR (GAPI)	DT (US/F)
0.0 100.00	140.00 40.000

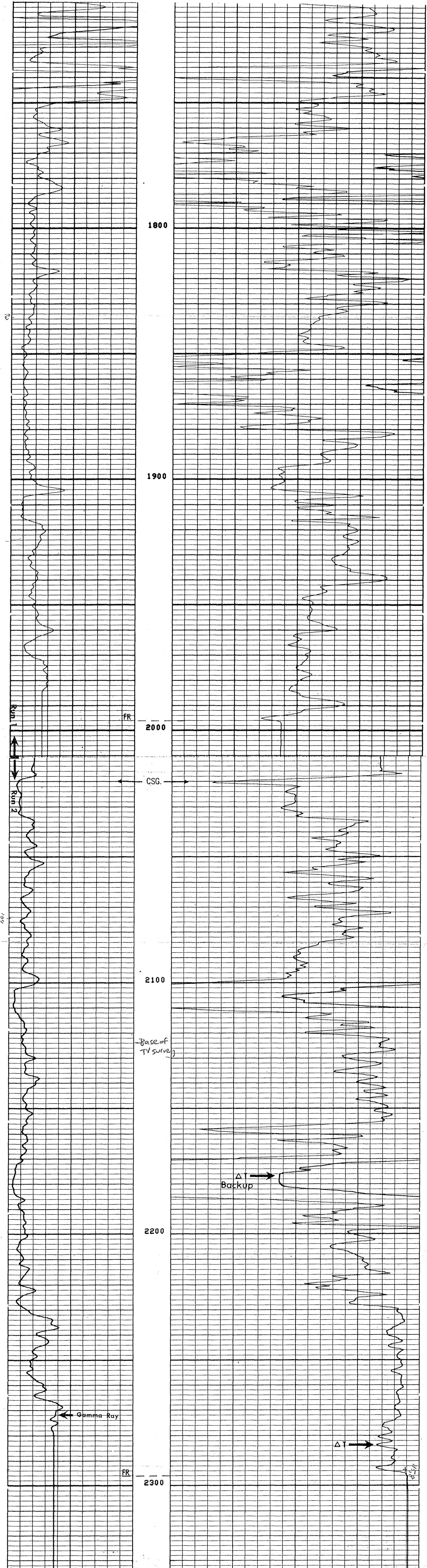
COMPANY ALSAY, INC. SCHL. FR 2296
WELL HARRIS CORP. IW NO. 1 SCHL. TD 2330
FIELD PALM BAY DRLR. TD 2332
COUNTY BREVARD STATE FLORIDA Elev. KB -
DF -
GL -

RWA (OHMM)	DT (US/F)
0.0 .50000	140.00 40.000
GR (GAPI)	
0.0 100.00	

FILE 2 02-FEB-86 00:58







FILE 2 27-MAR-86 18:32

GR (GAPI)	DT (US/F)
0.0 100.00	140.00 40.000

SENSOR MEASURE POINT TO TOOL ZERO

CBL 37.0 FEET	AMPL 37.0 FEET
TT3 33.3 FEET	TT4 32.3 FEET
TT1 36.0 FEET	TT2 37.0 FEET
GR 57.2 FEET	SRAT 34.5 FEET
SFL 6.4 FEET	ILD 9.4 FEET
SP 2.5 FEET	ILM 5.7 FEET
TENS 2.5 FEET	SPAR 2.5 FEET
NOIS 28.8 FEET	

PARAMETERS

NAME	VALUE	UNIT	NAME	VALUE	UNIT
WSV1	WF1		DWS	16	
DSIN	5	US	DDEL	200	US
CDTS	100.000		DWCD	512	
DIE	188.888	US/F	DTM	36.4888	US/F
CSIZ	5.50000	IN	MSEC	6.20000	MMHD
BS	7.87500	IN	BHS	OPEN	

COMPANY	ALSAY, INC.	SCHL. FR	2296
WELL	HARRIS CORP. IW NO. 1	SCHL. TD	2330
FIELD	PALM BAY	DRLR. TD	2332
COUNTY	BREVARD	STATE	FLORIDA
		Elev:	KB -
			DF -
			GI -

GR (GAPI)

0.0

100.00

FILE 7 ↓ 02-FEB-86 01:58

5

Run 1

400

500

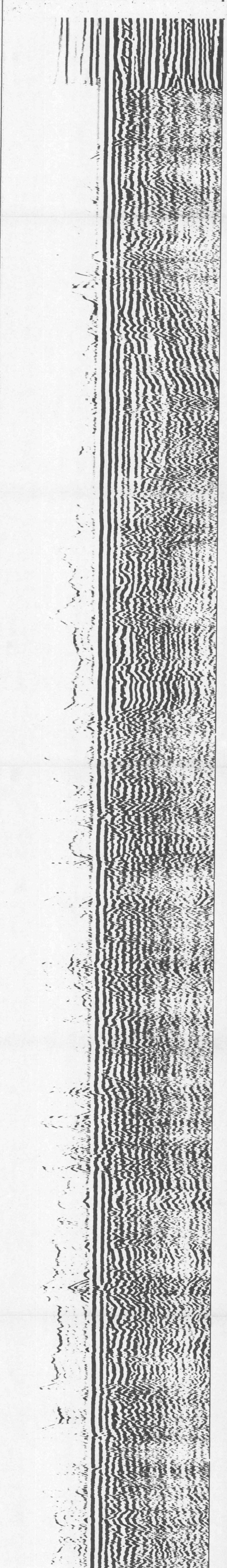
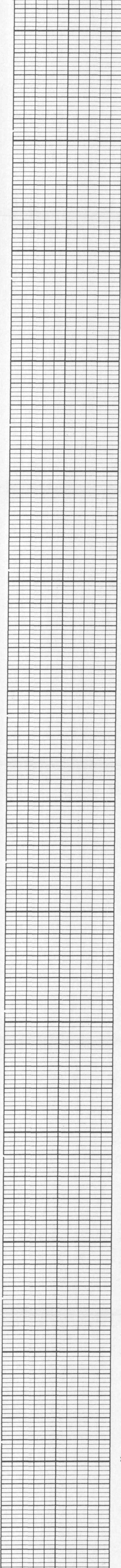
600

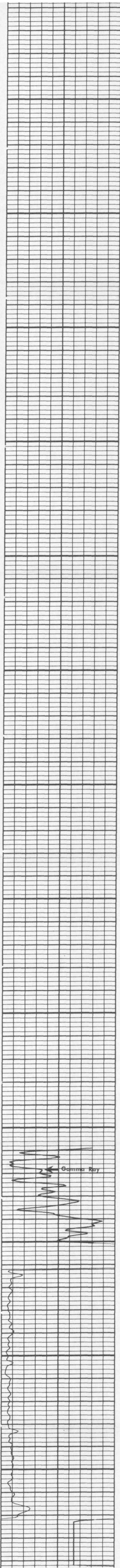
700

800

900

1000





1100

1200

1300

1400

1500

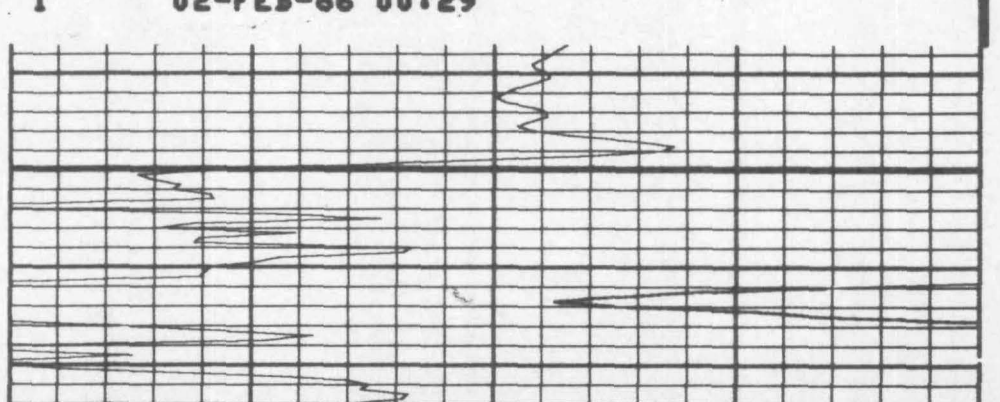
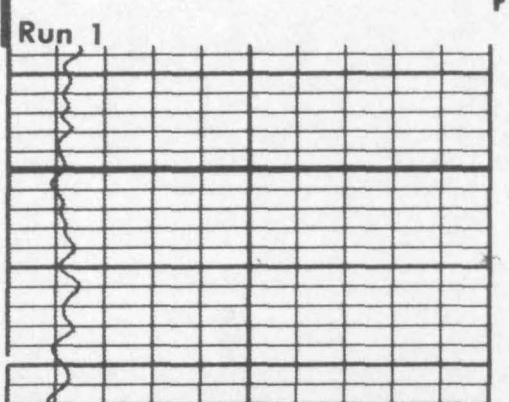
1600

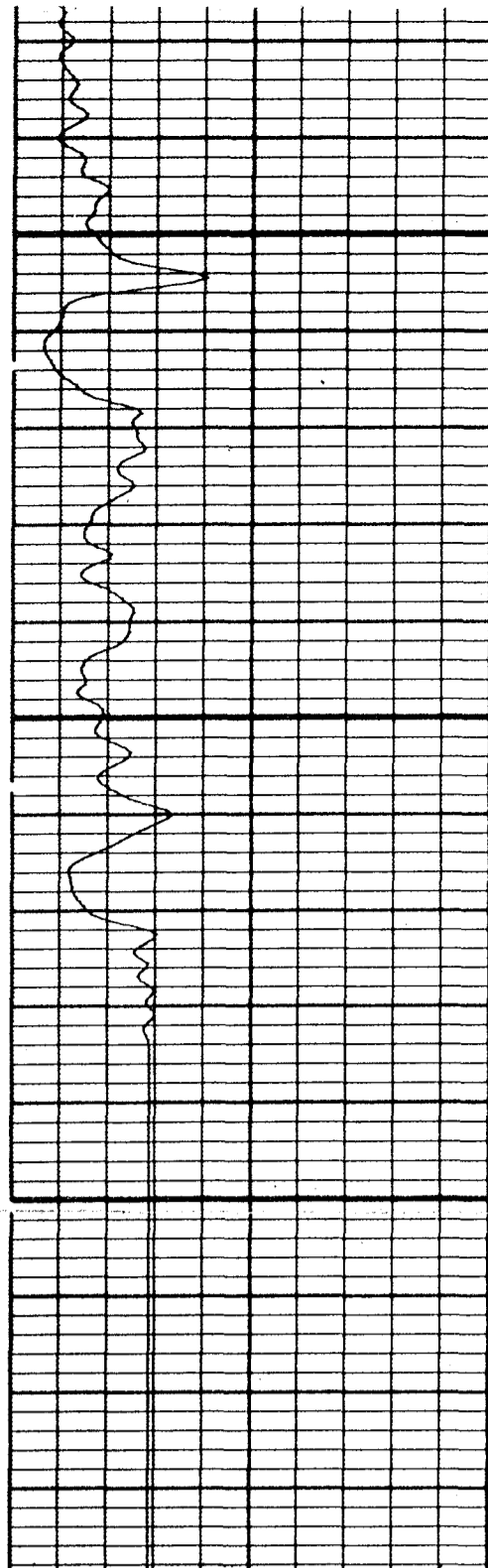
1700

FILE

REPEAT SECTION

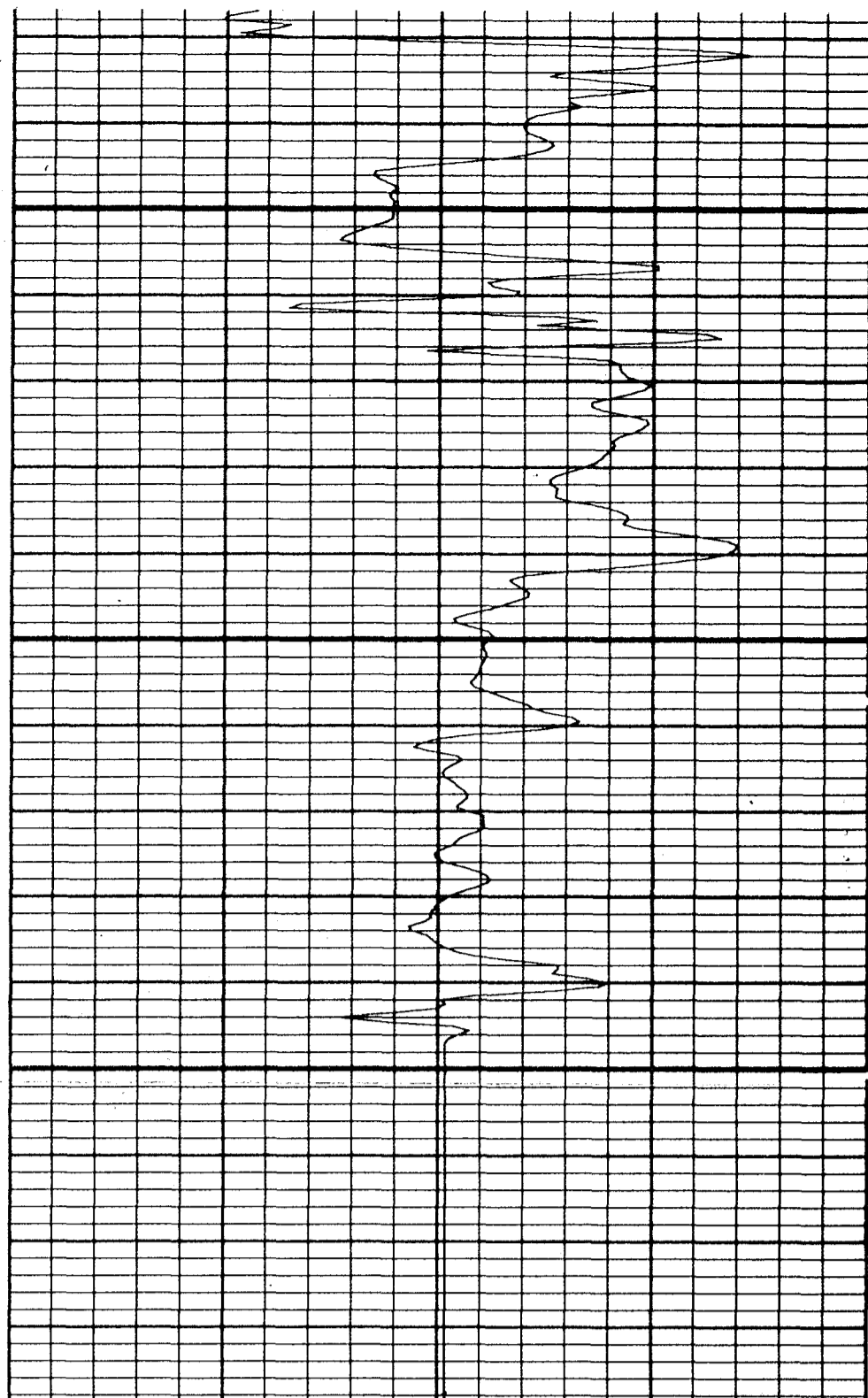
FILE 1 02-FEB-86 00:29





1900

2000



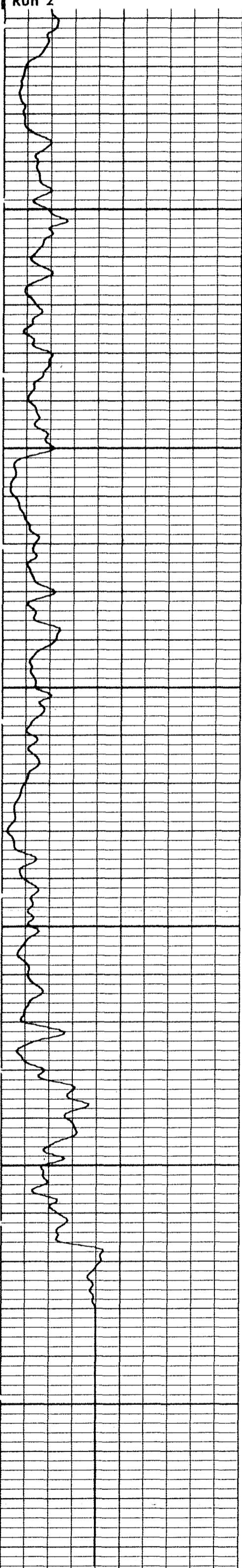
REPEAT SECTION

FILE 1 02-FEB-86 00:24

REPEAT SECTION

FILE 1 27-MAR-86 18:29

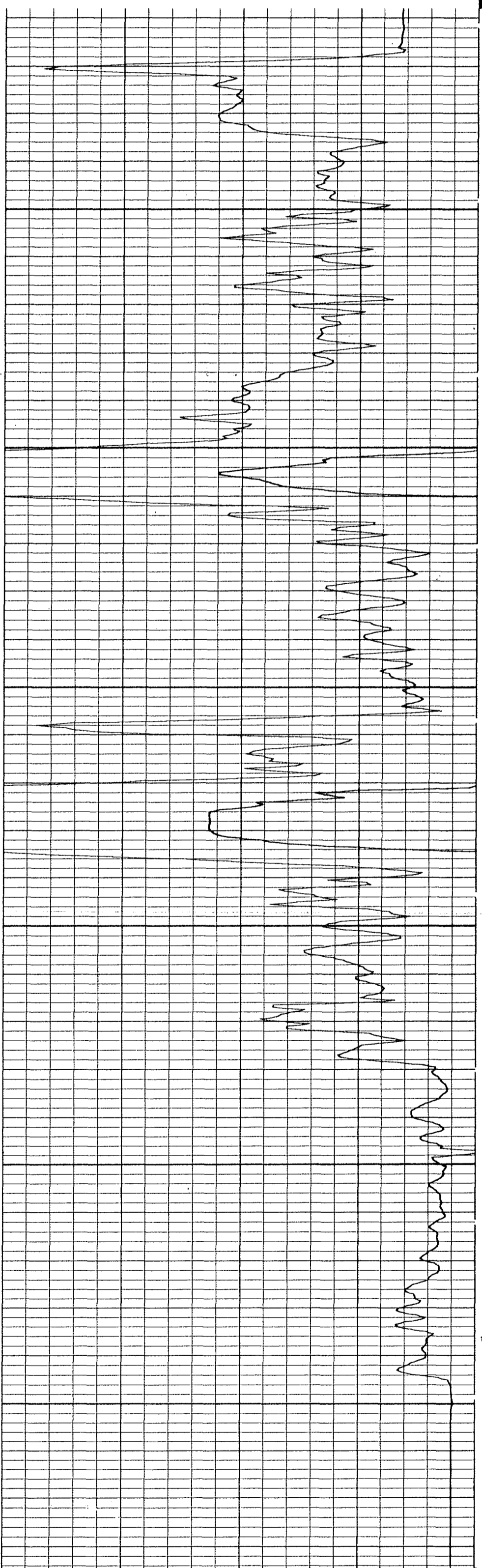
Run 2



2100

2200

2300



REPEAT SECTION

FILE 1 27-MAR-86 18:19

COMPANY	ALSAY, INC.	SCHL. FR	2296
WELL	HARRIS CORP. IW NO. 1	SCHL. TD	2330
FIELD	PALM BAY	DRLR. TD	2332
COUNTY	BREVARD	Elev:	KB -
STATE	FLORIDA		DF -
			GL -