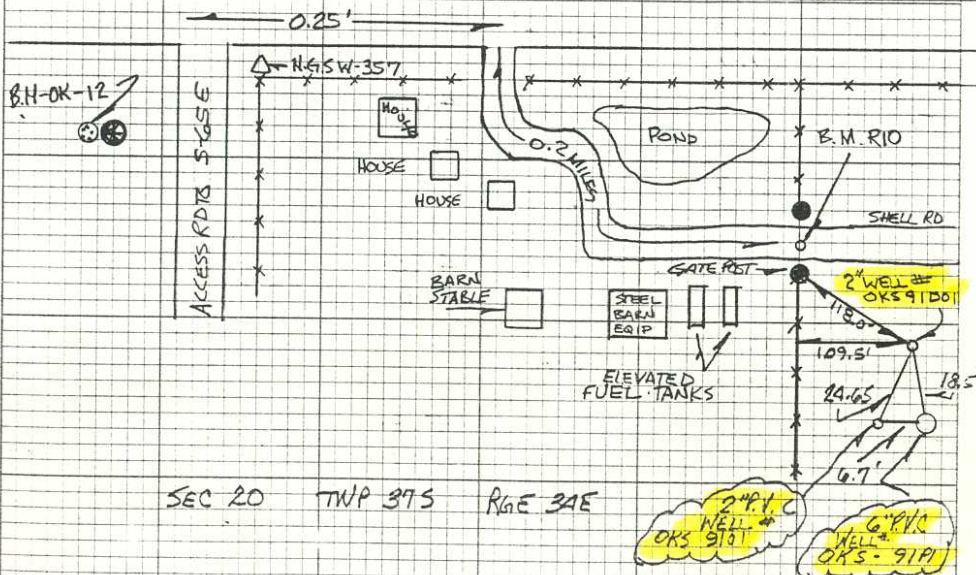


## COMMENTS

B.M. OK-12 EASTERLY MOST BOLT ON TOP OF FLAT PLATE OF FLOW WELL IN L.B.#6 PK-66

B.M. N.G.S. W-357 1979 ELEV. IN NAVD 88 RICK BARRIES WILL ADJUST TO NAVD 29

C.R-599



B.M. RIO IS A 1/4" I. PIPE W/S.F.W.M.D. ALUM DISK STAMPED "RIO" FROM THE INTERSECTION OF S.R-70 AND C.R-599 GO EAST ON S.R.-70 0.25 MI. TO ENTRANCE TO RIO RANCH GATE ON S SIDE S.R.-70. GO THRU B.M. GATE AND CONTINUE ON SHELL RD 0.2 MI TO A GATE AND STATION LOCATION B.M. IS IN COE HSFENCE + COE OF RD 1.0' BELOW THE LEVEL OF THE SHELL RD

91