

051-55

Permit #332

W-7109

Sun Oil 29-1 Sunoco Felda Unit

1301' FEL, 986' FSL of NE/4, sec 29, T45S R29E

Sunoco Felda Field

Hendry County, Felda Quad

GL: 37' DF: 53' TD: 11,474'

Spud: 04/28/65 P&A: 09/20/90

Washed & unwashed cutting samples are available from the Florida Geological Survey cuttings library in Tallahassee. Brief lith log of washed/unwashed cuttings by R.S. Caughey in December 1998.

Depth in feet below DF	DESCRIPTION
GL-30	No samples available.
30-60	Loose Qz sand, vf-f-m-rare coarse, subrnd-rnd, clear, sltly cloudy, most polished, rarely a few larger grs are v ltly frosted, most are med size grs; ±1% phos as bl & brn grs & fos frags; minor wh shell frags.
60-90	As above, slight increase in vf grs(ang-subrnd); 1-2% phos as above.
90-120	As above.
120-150	As above, with minor pale green to grayish olive, sdy, poorly consolidated clay.
150-180	As above, minor pale green, some yel gray, sdy, poorly consolidated clays; 2-4% wh, shell frags.
180-210	40-50% Ls, wh, fg, sltly sdy(most vf-f), mollusks, crab claws, gastropods, rare bryozoan, no phos, 1-3% of the Ls is stgly dolomitized by wh, yel gray, vf, subhedral Dol; 50-60% loose Qz/phos sand & gravel, vf-f-m-c-pebbles, phos makes up ±25% & most are bl grns & pebbles, a few Qz pebbles are flattened, the pebbles & most larger coarse grs are ltly frosted, the smaller grs are polished or v ltly frosted, the phos grs, grns, pebbles are polished; two pebbles appear to be rounded phos crust(?) fragments.
210-240	65-75% Ls, wh, fg, moldic-v moldic, porous, v fos (as molds/casts of mollusks & gastropods, etc), sltly sdy, no phos, with vf-f, clear-wh, drusy calcite lining molds & vugs; 25-35% loose Qz sand & gravel as above; 2-4% phos grs, grns, pebbles as above.

Depth in feet below DF	DESCRIPTION
240-270	70-80% Ls/fos as above; 20-30% loose Qz sand/gravel as above; ±1% phos grs, grns, pebbles.
270-300	As above; 1-2% phos material as above.
300-330	As above, 65%Ls/fos, 35% Qz sand/gravel, 1-2% phos material, a few Qz pebbles are flattened.
330-360	75% Qz sand, vf-f-m-some coarse-a few pebbles, most are med size; 1-2% phos grs, grns, rare pebble; ±25% Ls/fos as above.
360-390	As above; phos @ 1-3%.
390-420	Ls, yel gray, fg, sdy, phos(1-4% as small bl grs), fos, mollusks, encrusting bryozoan, a few gastropods & echinoid spines, a little Ls is wkly dolomitized by grayish yellow, vf xls; 1-3% gray olive, clayey dolosilt.
420-450	Ls/fos as above; minor dolosilt as above.
450-480	Ls/fos as above, a few cheilostome bryozoa, some Ls is v wkly dolomitized by vf grayish yellow xls; minor-1% gray olive, clayey dolosilt.
480-510	65-70% fos frags of num-abundant mollusk shell frags, cheilostome & encrusting bryozoan, some echinoid spines, gastropods, & a little Ls as above; 30-35% pale olive, clayey, v thinly laminated dolosilt; 2-3% loose phos grs, grns, phos crust(?), Unwashed: As above, with 60-65% dolosilt.
510-540	Ls, wh, yel wh, sdy, phos, mollusks, echinoid spines, a few encrusting & cheilostome bryozoan; 10-20% loose phos material as vf-f bl & brn grs & common phos crust, fos frags & some grns; 5% Dol, gray yel, yel wh, vf, euhedral/subhedral, phos; 5% pale olive, clayey dolosilt as above. Unwashed: Nearly all yel gray, dolomitic, sdy, phos, fos, v poorly consolidated marl; some grayish olive, dolomitic clay.
540-570	As above, washed & unwashed; overall more dolomitic & clayey.

<u>Depth in feet below DF</u>	<u>DESCRIPTION</u>
570-600	As above, washed & unwashed; some pale olive, thinly laminated, dolomitic clay.
600-630	As above, washed & unwashed.
630-660	Ls, wh, v lt gray, fg-vfg, phos, sdy to sltly sdy, fos, mollusks, gastropods, bryozoan, crab claws, barnacles, <u>Sorites</u> (?) present; 1-3% Dol, wh, yel gray, f-m xln, euhedral/subhedral, phos, sltly sdy.
660-690	Ls/fos/Dol as above; ±1% clay.
690-720	Ls/fos as above; 10-15% Dol as above; minor to 5% dolomitic marl.
720-750	As above; <u>Sorites</u> present.
750-780	Ls/fos as above; 5-10% Dol as above.
780-810	60% Ls/fos as above; minor Dol as above; 20% Ss, yel wh, calc, rarely to sltly phos, some mollusks & peloids, cemented by vf drusy calcite, grades to a "fos hash" Ls(20%), sdy, sltly phos, porous, mollusk shell frags, peloids, cemented by vf drusy calcite(some mollusk shell frags with rnd edges); minor wh, poorly consolidated marl.
810-840	Ls, wh, v lt gray, phos, sltly sdy, sltly moldic, common f-m drusy calcite lines molds & replaces some fossils, mollusks, gastropods, crab claws, <u>Sorites</u> present; 1-3% Dol, wh, f euhedral/subhedral, phos; minor wh, marl.
840-870	Ls/fos as above, with 5-10% Dol as above.
870-900	Mix of Ls/Ss/"fos hash" Ls as at 780-810'; now minor phos crust & a little wkly weathered(?) Ls & reworked fossil material.
900-930	Largely "fos hash" Ls(rarely phos), some Ss & some v lt gray Ls as above; minor wh marl.
930-960	Ls, v lt gray, wh, sdy to v sdy, sltly phos, mollusks, gastropods, common-v common drusy calcite in molds & replaces fossils; minor "fos hash" Ls.
960-990	As above.
990-1020	As above.

#332, W-7109, Sun Oil 29-1 SFU, NE/4 sec 29, T45S R29E, Felda Quad

Depth in feet
below DF

DESCRIPTION

1020-1050	As above, some v sdy Ls grades to a v calc Ss.
1050-1080	As above, minor v lt gray Ss.
1080-1110	As above.
1110 & deeper	No cutting samples below 1110'DF.

051-55

WELL	W-7109
COMPANY	EXXON COMPANY USA
FIELD	FELDA
COUNTY	HENDRY
STATE	FLORIDA
LOCATION	1301' FEL, 986' FSL of NE/4 sec 29, T45S R29E, Hendry County, Sunoco Felda Field
GL	37' DF: 53' TD: 11,474'
SPUD	04/28/65 P&A: 09/20/90

Permit #332, W-7109, Felda Quad
Sun Oil 29-1 Sunoco Felda Unit
1301' FEL, 986' FSL of NE/4 sec 29,
T45S R29E, Hendry County
Sunoco Felda Field
GL: 37' DF: 53' TD: 11,474'
Spud: 04/28/65 P&A: 09/20/90

This GR/Caliper log was run when this well bore was being Plugged & Abandoned.

The well name, location and coordinate reference data were furnished by the Customer.

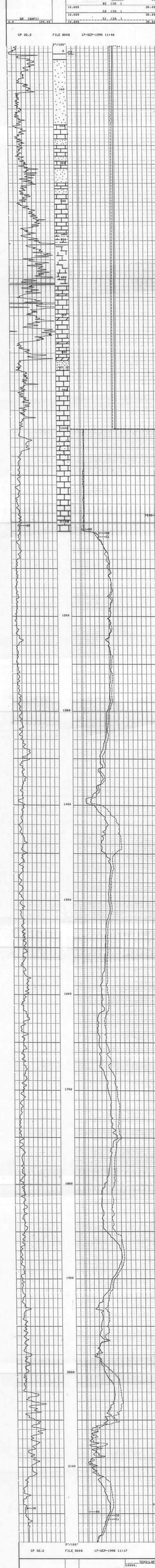
All interpretations are opinions based on information from electrical or other measurements and we cannot, and we do not guarantee the accuracy or correctness of any interpretations, and we shall not, except in the case of fraud or willful negligence on our part, be held responsible for any interpretations made by any of our officers, agents or employees. These interpretations are also subject to Change of our General Terms and Conditions as set out in our current Price Schedule.

Barrel	0
Gal	0
Oil	0
Water	0
Gas	0
Sludge	0
Other	0

CP 32.2 FILE 8008 17-SEP-1990 11:46

Lith log by R.S. Caughey in December 1998.

GL to ±20' No cutting sample available.



Permit #332, W-7109, Felda Quad

Lith log by R.S. Caughey in 12/98. Depths of lith description modified slightly to better match gamma ray log.

20-195' Loose Qz sand, vf-f-m-rare coarse, most med size, sub-rnd to rnd, clear, sltly cloudy, most are polished, a few larger grs are ltly frosted; 1-2% phos as bl & brn grs/fos frags; locally (esp 120'-195') some to minor pale olive, sdy clay.

195-220' Ls, wh, fg, sltly sdy(vf-f), mollusks, crab claws, rare bryozoan, no phos; tr-minor Ls dolomitized by wh, yel gray, vf subhedral Dol; some Ls is moldic, porous, w/drusy calcite in molds.

220-380' Ls/fos as above, and Qz sand/gravel & 1-3% phos grs, grns, rare pebble; a few Qz pebbles are flattened.

380-480' Ls, yel gray, fg, sdy, phos(1-4% as small bl grs), gastropods, mollusks, encrusting bryozoan & echinoid spines; a little Ls is wky dolomitized by grayish yellow vf xls.

480-510' Dolosilt, pale olive, very thinly laminated, clayey, 2-3% phos grs, grns, crust(?); common-abundant mollusks, cheilostome & encrusting bryozoan, some echinoid spines & gastropods.

510-620' Marl & marly Ls, yellow

620-820' Ls, wh, v lt gray, fg-vfg, phos, sdy to sltly sdy, mollusks, gastropods, crab claws, barnacles, bryozoan, Sorites; 1-15% Dol, wh, yel gray, f-m xln, euhedral/subhedral, phos, sltly sdy.

820-845' Ss, yel wh, calc, rarely to sltly phos, some mollusks & peloids, cemented by vf drusy calcite; this Ss grades to a 'fos hash' Ls(sdy, sltly phos, cmt'd by vf drusy calcite).

845-860' Ls, wh, v lt gray, phos, sltly sdy, sltly moldic, f-m drusy calcite lines molds & replaces some fossils, mollusks, gastropods, crab claws, Sorites; 1-3% Dol, wh, f euhedral/subhedral, phos.

860-920' 'Fos hash' Ls, as described above; locally a little phos crust(?), some Ls appears wky weathered(?) & some reworked(?) fossil material.

920-1110' Ls, v lt gray, wh, sdy to v sdy, sltly phos, mollusks, gastropods, common to v common drusy calcite in molds & replacing fossils; minor 'fos hash' Ls locally. At 1010'-1040' some v calc Ss/v sdy Ls.

1110' & deeper No cutting samples available.

PERMIT #332, W-7109, FELDA QUAD

CP 32.2 FILE 8008 17-SEP-1990 11:17

REPEAT SECTION



