



RMBAKER LLC
Geology and Geophysics

WELL WCA2-E4-GWS
UWI WCA2-E4-GWS

8600 Oldbridge Lane
Orlando, FL 32819
mobile ph 407-733-8958

LOG STAGE COMPLETION

rob@rmbaker.com
www.rmbaker.com

HEADER NOTES:

COMP	SFWMD	
LOC	WATER CONSERVATION AREA 2	
FLD	WATER CONSERVATION AREA 2	
CNTY	BROWARD	
STAT	FL	
PROV	FL	
CTRY	USA	
LATI	26.3090	X
LONG	-80.3570	Y
GDAT	WGS84	HDAT
SEC		ELEV
TWP		V DAT
RGE		
		ALL SERVICES: DUAL INDUCTION NATURAL GAMMA

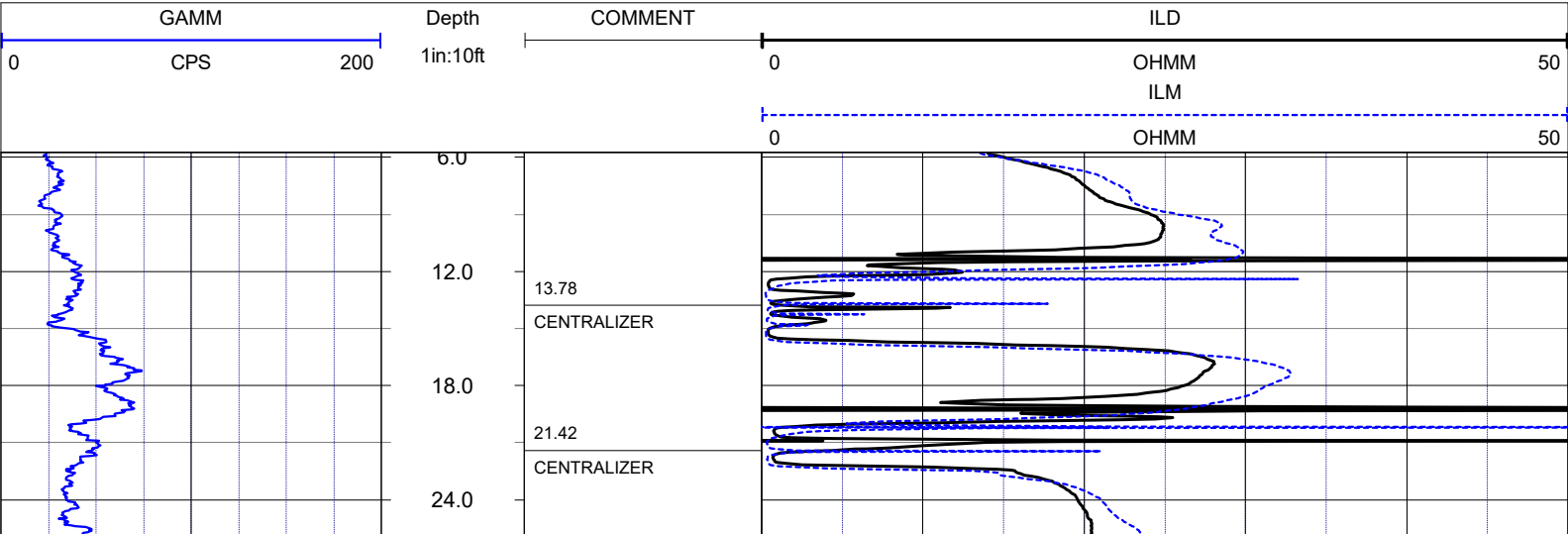
PERMANENT DATUM:
LOG MEASURED FROM: TOP OF CASING
DRILLING MEASURED FROM:

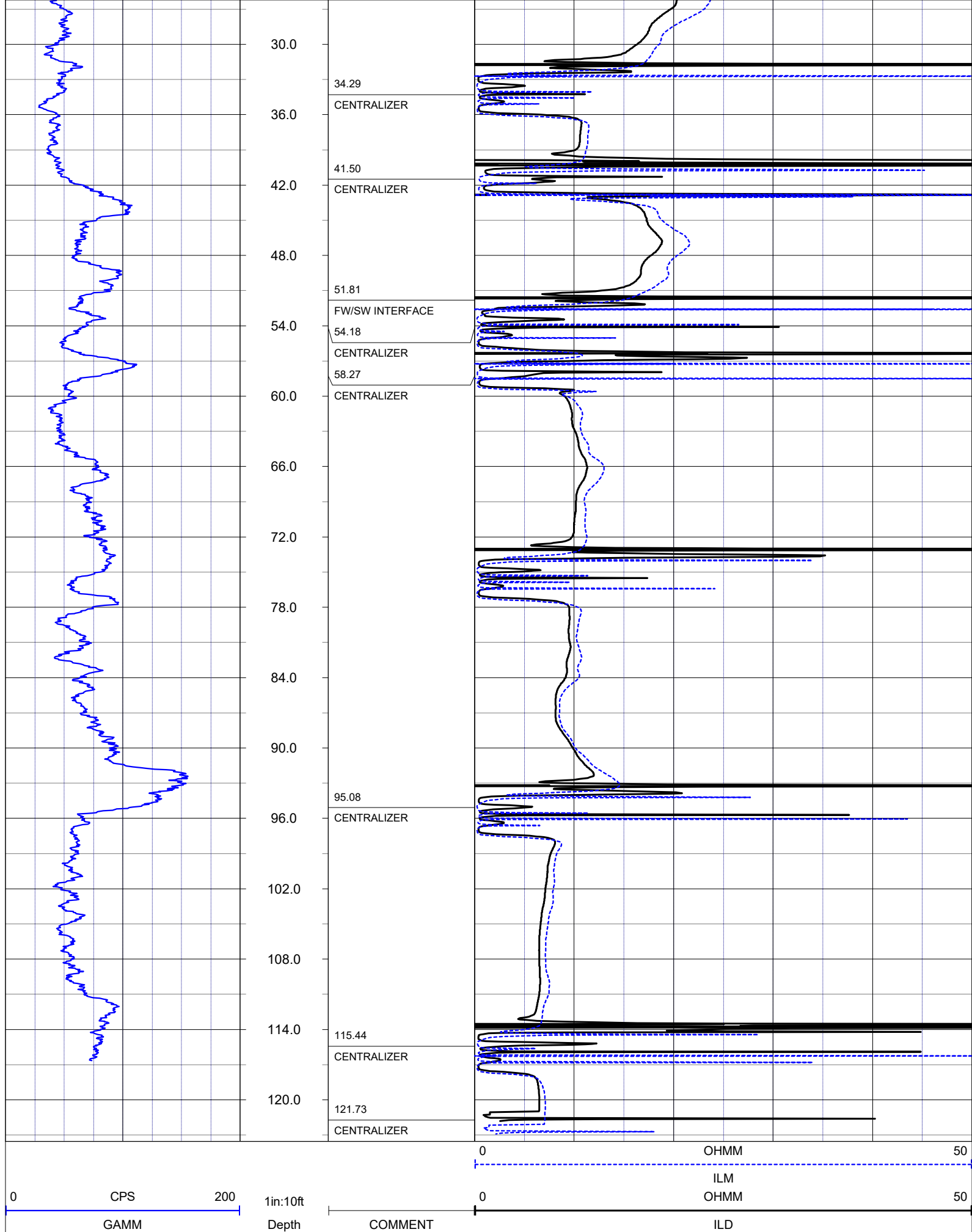
DATE	25 Sep 18	TYPE FLUID IN HOLE	WATER
RUN No	1	LOGGING SPEED (FT/MIN)	25
TYPE LOG	DUAL INDUCTION	TROLLING DIRECTION	UP
DEPTH-DRILLER	125	PUMPING RATE (GPM)	N/A
DEPTH-LOGGER	124.24		
DRILLER	N/A		
RECORDED BY	RMB		
SRVC	RMBAKER	API	N/A
WITNESSED BY	SFWMD	LIC	N/A

BOREHOLE RECORD		CASING RECORD	
NO.	BIT FROM TO	SIZE	MAT. FROM TO
1		2	pvc 0 124.24

LOG CODES

3-arm caliper	CAL	long normal resistivity	RLN	deep induction conductivity	IDC
natural gamma (CPS)	GAMM	8 inch resistivity	R8	shallow induction conductivity	ISC
spontaneous potential	ESP	32 inch resistivity	R32	sonic interval velocity	DT
single point resistance	RES	deep induction resistivity	ILD	sonic porosity (RHG method)	SPHI
short normal resistivity	RSN	shallow induction resistivity	ILM	repeat designation	R





0 CPS 200
 GAMM

1 in: 10 ft
 Depth

COMMENT

0 OHMM 50
 ILM
 0 OHMM 50
 ILD

NOTES:

While due care has been exercised in the performance of these measurements and observations, in accordance with methodologies utilized by the general practitioner, RMLBAKER LLC can make no representations, warranties, or guarantees with respect to latent or concealed conditions that may exist, which may be beyond the detection capabilities of the methodologies used, or that may extend beyond the areas and depths surveyed.

The geophysical well logs show subsurface conditions as they existed at the dates and locations shown, and it is not warranted that they are representative of subsurface conditions at other locations and times. If, at any time, different subsurface conditions from those observed are determined to be present, we must be advised and allowed to review and revise our observations if necessary.

Florida Licensed Geology Business GB 458

END OF LOG
