



# SOUTH FLORIDA WATER MANAGEMENT DISTRICT

Rev. 1/16

SCADA RTU Station Name: <b>BICY</b>	DB Hydro Station Name: <b>BICY-MZ4</b>	DB Hydro Site Name: <b>BICY</b>	Agency: <b>S.F.W.M.D.</b>	Date of Field Work: <b>10/11/2018</b>
Party Chief: <b>EBANKS/SCHAUER</b>	Field Book: <b>SCADA FB#13</b>	Page(s): <b>2</b>	Prepared by: <b>A.Schauer</b>	

### SITE SPECIFIC DATA

Site Benchmark(s): <b>Dona 1998</b> <b>BICY 3.015 NAVD88 4.395 NGVD29</b>	Benchmark Elevation(s) (NAVD88) <b>3.02 feet (Dona)</b> <b>3.01 feet (BICY)</b>	Corpscon 6.0.1 Conversion Factor (NAVD88 to NGVD29) <b>+1.39</b>
Reference Elevation(s) (NAVD88): <b>9.79 feet</b>	Calibration Port Elevation(s) (NAVD88): <b>N/A</b>	
Ground Elevation (NAVD88): <b>N/A</b>	Pad Elevation (NAVD88): <b>N/A</b>	

### GEOGRAPHIC DATA

Section <b>34</b>	Township <b>52 South</b>	Range <b>30 East</b>
Well or Benchmark	Latitude: <b>25°53'37.60"</b>	Longitude: <b>81°18'33.70"</b>
	State Plane Coordinates	Northing (Y) = <b>N/A</b>
		Source: <b>Scaled pick point aerial esri product</b>
		Easting (X) = <b>N/A</b>


**Notes: BICY 3.015 (NAVD88) was reset in concrete slab.**

**NAVD88** – North American Vertical Datum of 1988

**NGVD29**- National Geodetic Vertical Datum of 1929

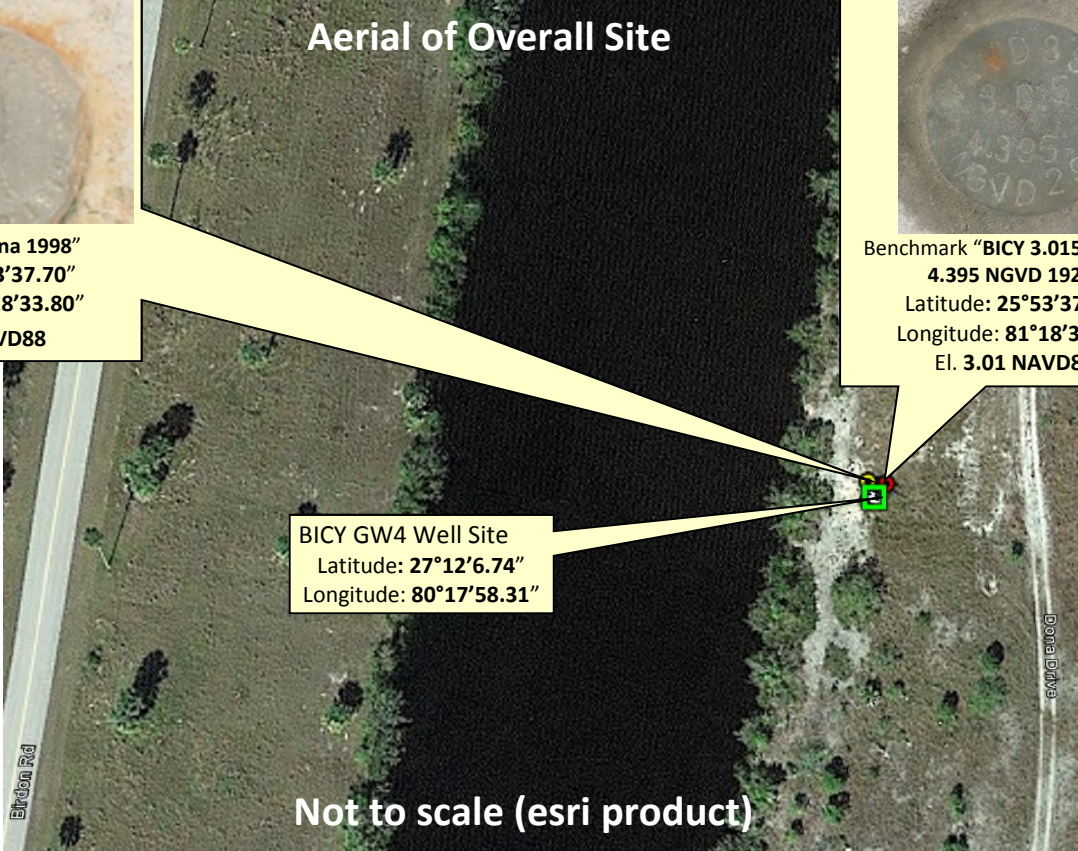
**Corpscon 6.0.1** - A U.S. Army Corps of Engineers Engineering Research and Development Center Topographic Engineering Center Alexandria, Virginia Windows-based program to convert coordinates and elevations between datum's using vertcon05.txt and vertcon05.05 files supplied by the U.S. Army Corps of Engineers South Atlantic Division, Jacksonville Fl.


### PICTURES



Benchmark "Dona 1998"  
Latitude: **25°53'37.70"**  
Longitude: **81°18'33.80"**  
El. **3.02 NAVD88**

## Aerial of Overall Site





Benchmark "BICY 3.015 NAVD88  
**4.395 NGVD 1929"**  
Latitude: **25°53'37.80"**  
Longitude: **81°18'33.70"**  
El. **3.01 NAVD88**

BICY GW4 Well Site  
Latitude: **27°12'6.74"**  
Longitude: **80°17'58.31"**

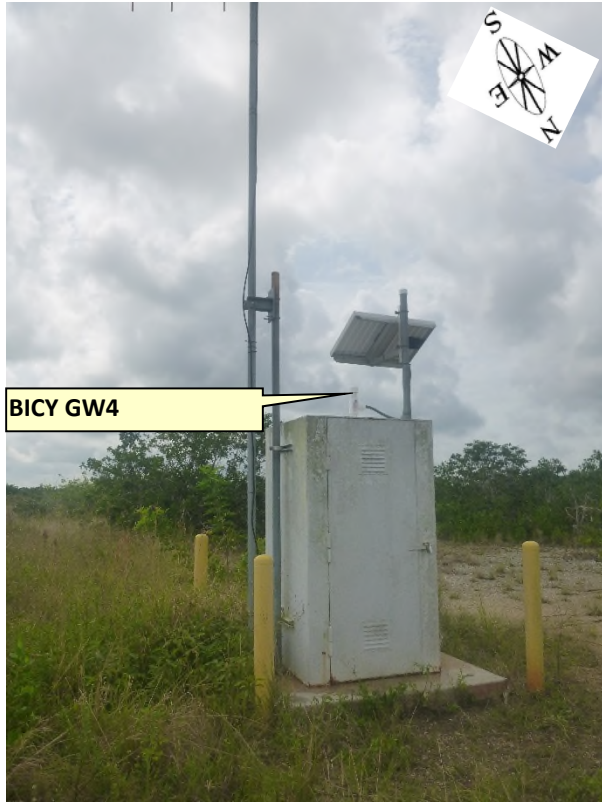
Not to scale (esri product)



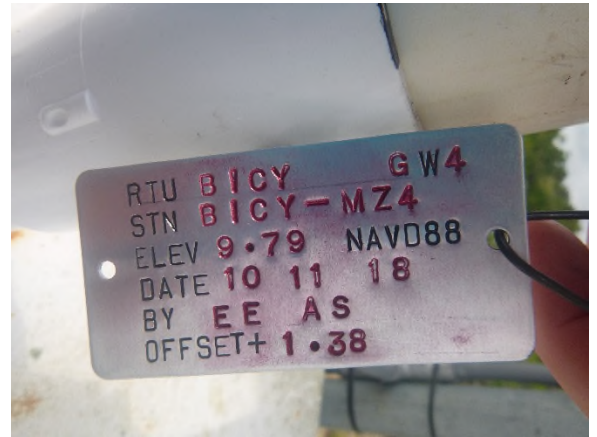
# SOUTH FLORIDA WATER MANAGEMENT DISTRICT

Rev. 1/16

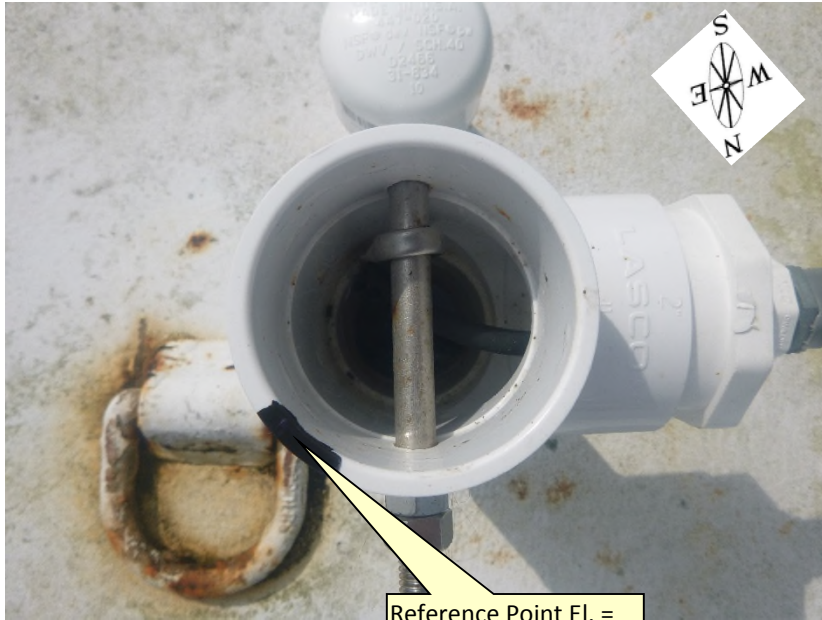
BICY GW4 Well (Overall)



BICY GW4 Well Tag



BICY GW4 Reference Elevation Mark



Reference Point El. = 9.79 feet (NAVD88)



BICY GW4 North Side (looking towards the South)

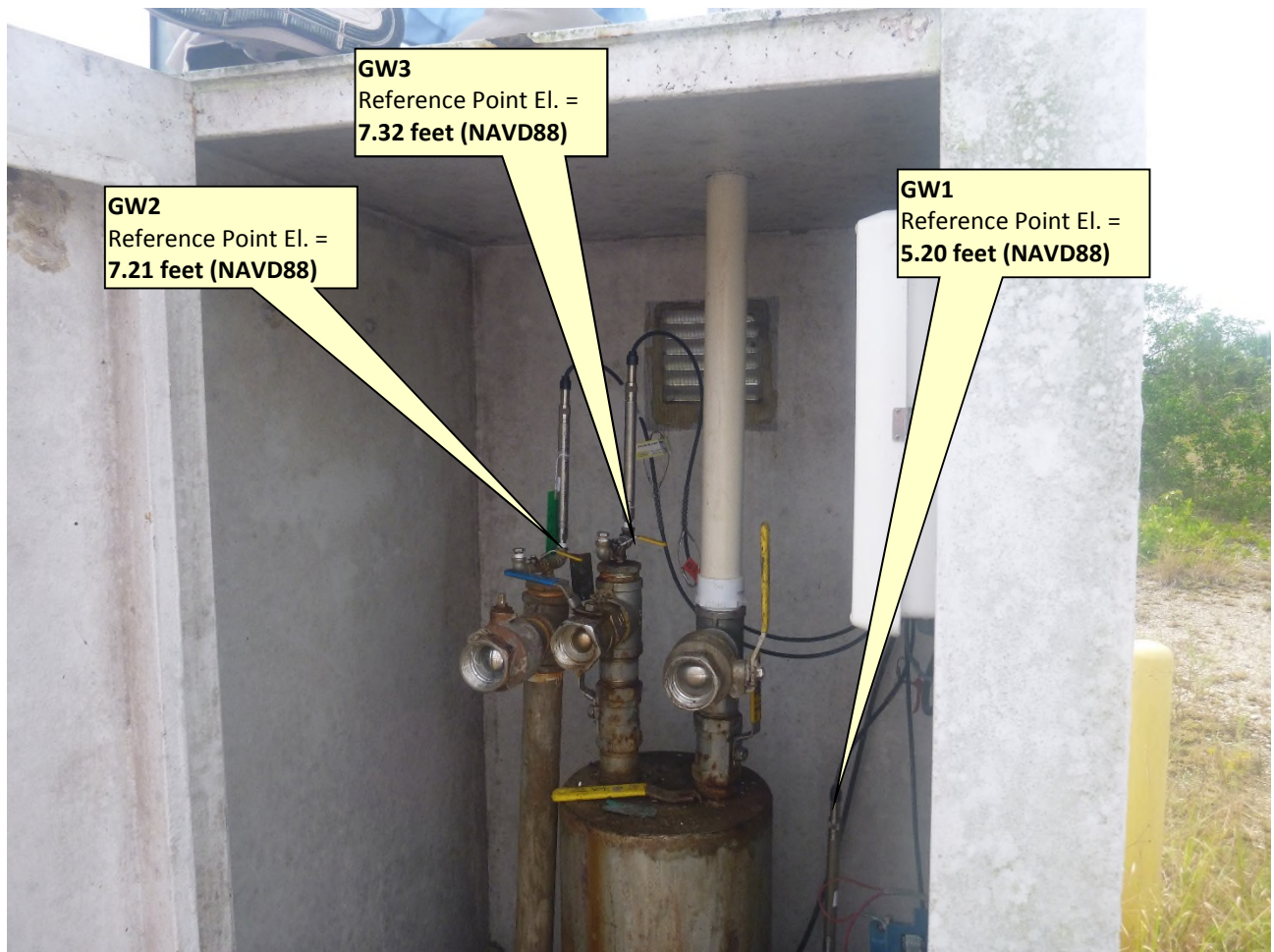




# SOUTH FLORIDA WATER MANAGEMENT DISTRICT

Rev. 1/16

BICY GW1 GW2, and GW3 Wells



**GW3**  
Reference Point El. =  
**7.32 feet (NAVD88)**

**GW2**  
Reference Point El. =  
**7.21 feet (NAVD88)**

**GW1**  
Reference Point El. =  
**5.20 feet (NAVD88)**



# SOUTH FLORIDA WATER MANAGEMENT DISTRICT

Rev. 1/16

Benchmark: **Dona 1998 El. 3.02 feet (NAVD88)**



Benchmark: **BICY 3.015 NAVD88 4.395 NGVD29 El. 3.01 feet (NAVD88)**

