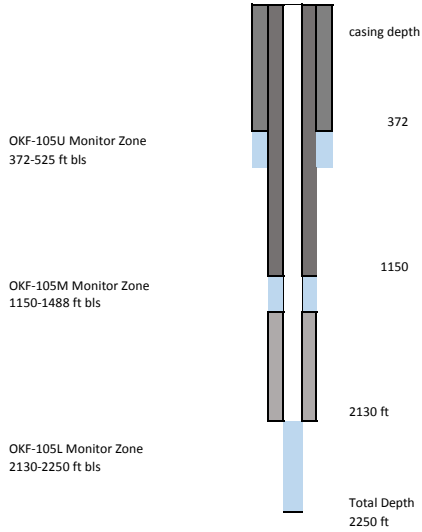


Site Name **OKF105**
 Station Names OKF-105L, OKF-105M, OKF-105U
 Aquifers Upper Floridan, Avon-Park Permeable Zone, Lower Floridan Confining Unit
 FDEP Identifier Unknown
 Date of this summary 6/28/2017

Lat / Long: 272407.3 / 810651.1
 County: Okeechobee
 Wellhead Repair Date: Noember 2013



6/17/2015

Survey data: 6/10/2014
 Reference elevations: OKF-105U 41.063 ft NAVD 88, OKF-105M 43.143 ft NAVD 88 and OKF-105L 44.113 ft NAVD 88
 Data Adjustments: To convert to NGVD 29 add 1.175
 References: SFWMD, 2011. Hydrogeological Investigation of the Floridan Aquifer System at S-65C Site (Well OKF-105) Okeechobee County, Florida, Technical Publication WS-32. 288p. SFWMD survey, June 2014

Note: During construction a packer test #3 was done in the LFA-FZ1 zone. The field parameter and ionic concentrations are below. Water type was Na-Cl

Field Parameter Concentrations OKF-105	
Field pH:	6.38
Specific Condutance (uS/c)	10931
Temperature (Celcius)	29.99
TDS (mg/L)	6681

OKF-105 Ionic Ranges	
Parameter	Concentration (mg/L)
Potassium (K)	56
Sodium (Na)	1681
Calcium (Ca)	239
Magnesium (Mg)	240
Chloride (Cl)	3193
Bicarbonate (HCO3)	109
Sulfate (SO4)	722

OKF-105U Monitor Zone

Casing Material:	Steel
Diameter:	18 inches
Data Range:	2013-2015
Sampling Events Analyzed:	2
Water Type:	Na-Mg-HCO3-Cl

Field Parameter Averages OKF-105U

Field pH:	7.85
Specific Condutance (uS/cm)	812.00
Temperature (Celcius)	24.35
TDS (mg/L)	384
Water Level (ft NGVD 29)	45.67

OKF-105U Ionic Ranges

Parameter	Min (mg/L)	Max (mg/L)
Potassium (K)	7.6	7.8
Sodium (Na)	70.9	116.3
Calcium (Ca)	21.5	22.3
Magnesium (Mg)	23.5	23.7
Chloride (Cl)	79.2	153
Bicarbonate (HCO3)	262	268
Sulfate (SO4)	1.2	2

OKF-105U, 6/10/2015

OKF-105M Monitor Zone

Casing Material:	Steel
Diameter:	12 inches
Data Range:	2009-2015
Sampling Events Analyzed:	4
Water Type:	Na-Ca-Mg-Cl-SO4

Field Parameter Averages OKF-105M

Field pH:	7.83
Specific Condutance (uS/cm)	2517
Temperature (Celcius)	28.5
TDS (mg/L)	1499.00
Water Level (ft NGVD 29)	45.39

OKF-105M Ionic Ranges

Parameter	Min (mg/L)	Max (mg/L)
Potassium (K)	6.7	7
Sodium (Na)	258	261
Calcium (Ca)	128	137
Magnesium (Mg)	71	75
Chloride (Cl)	495	536
Bicarbonate (HCO3)	94	95
Sulfate (SO4)	325	359

OKF-105M, 3/25/2015

OKF-105L Monitor Zone

Casing Material:	Fiberglass
Diameter:	5 inches
Data Range:	2009
Sampling Events Analyzed:	1
Water Type:	Na-Cl

Field Parameter Averages OKF-105L

Field pH:	6.6
Specific Condutance (uS/cm)	27668
Temperature (Celcius)	31.2
TDS (mg/L)	18836
Water Level (ft NGVD 29)	51.06

OKF-105L Ionic Concentrations

Parameter	Concentration (mg/L)
Potassium (K)	180
Sodium (Na)	4890
Calcium (Ca)	1067
Magnesium (Mg)	419
Chloride (Cl)	8783
Bicarbonate (HCO3)	51
Sulfate (SO4)	2358

OKF-105L, 7/24/2009