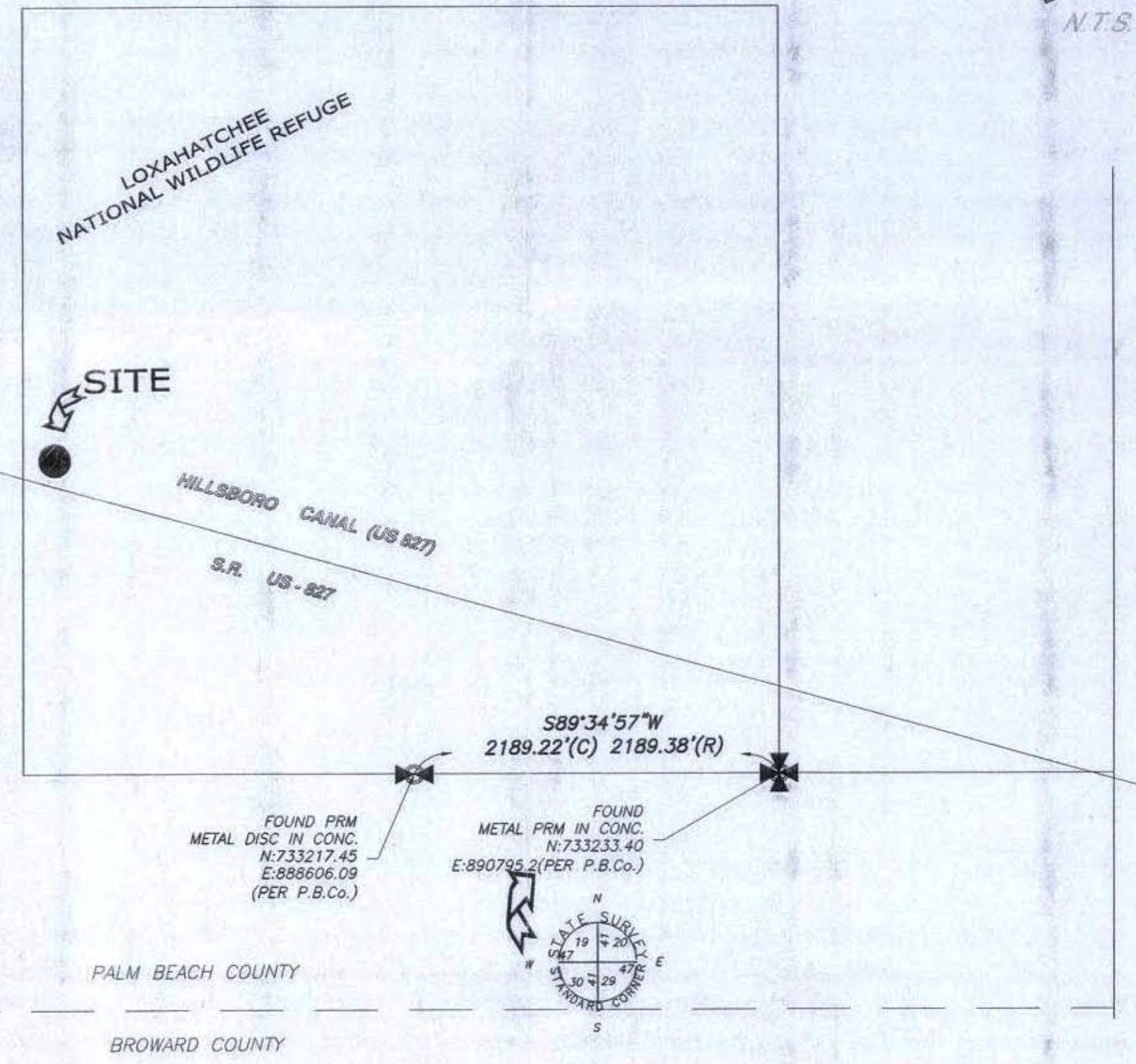
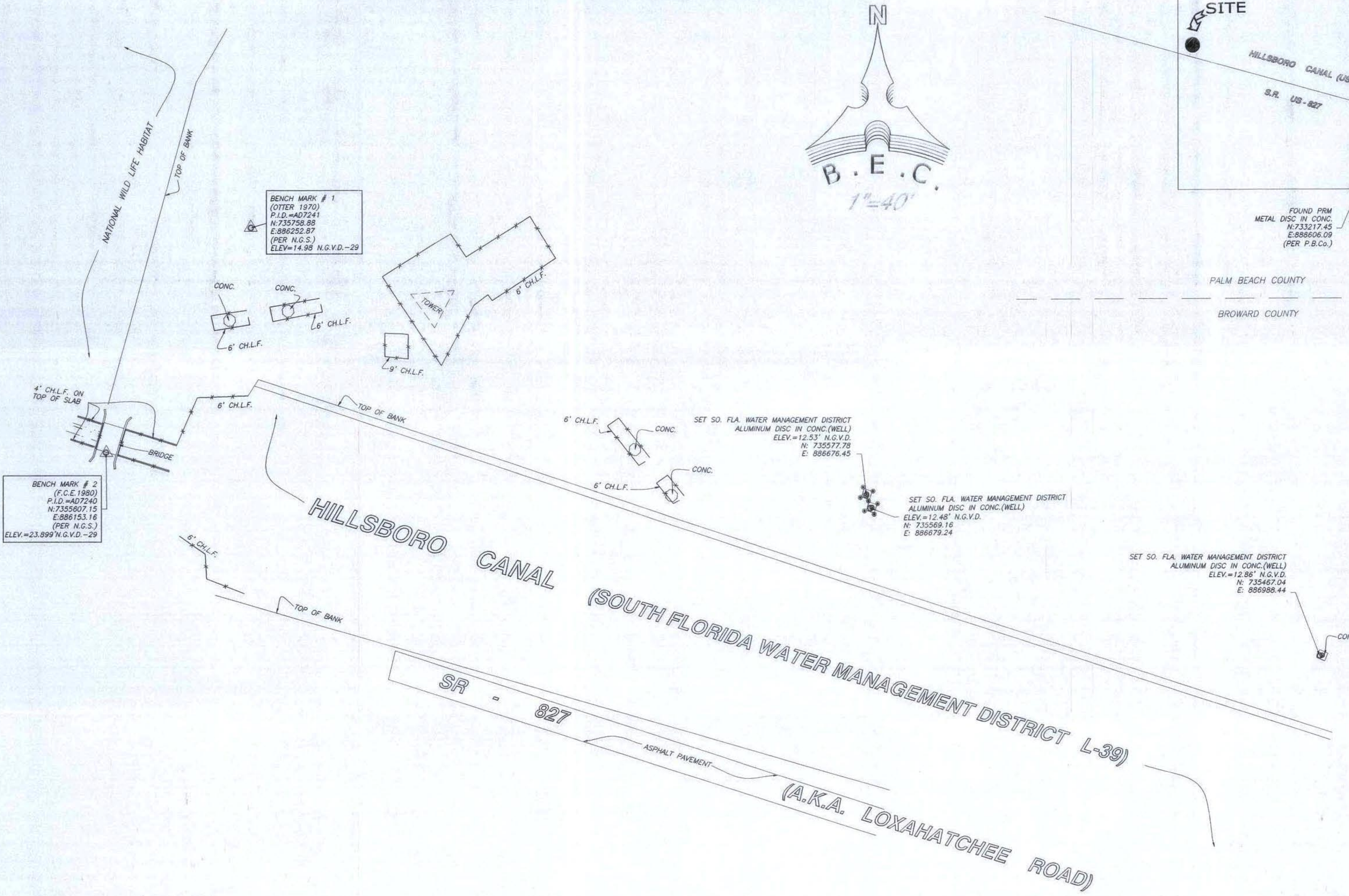


SPECIFIC PURPOSE SURVEY

LOCATION SKETCH

SEC. 19-47-41



BENCH MARK # 2
(F.C.E. 1980)
P.I.D.=AD7240
N: 7355607.15
E: 886153.16
(PER N.G.S.)
ELEV.=23.899' N.G.V.D.-29

BENCH MARK # 1
(OTTER 1970)
P.I.D.=AD7241
N: 735758.88
E: 886252.87
(PER N.G.S.)
ELEV.=14.38' N.G.V.D.-29

SET SO. FLA. WATER MANAGEMENT DISTRICT
ALUMINUM DISC IN CONC.(WELL)
ELEV.=12.53' N.G.V.D.
N: 735577.78
E: 886676.45

SET SO. FLA. WATER MANAGEMENT DISTRICT
ALUMINUM DISC IN CONC.(WELL)
ELEV.=12.48' N.G.V.D.
N: 735569.16
E: 886679.24

SET SO. FLA. WATER MANAGEMENT DISTRICT
ALUMINUM DISC IN CONC.(WELL)
ELEV.=12.86' N.G.V.D.
N: 735467.04
E: 886988.44

- ABBREVIATIONS**
- CH.L.F. = CHAIN LINK FENCE
 - CONC. = CONCRETE
 - ELEV. = ELEVATION
 - L = LENGTH (WHEN USED IN CURVE DATA)
 - N.G.V.D. = NATIONAL GEODETIC VERTICAL DATUM
 - R = RADIUS
 - SEC. = SECTION
 - SO. = SOUTH
 - N.G.S. = NATIONAL GEODETIC SURVEY
 - A.K.A. = ALSO KNOWN AS
 - P.B.Co. = PALM BEACH COUNTY

- SURVEYOR'S NOTES:**
1. THIS IS NOT A BOUNDARY SURVEY.
 2. ELEVATIONS SHOWN ARE ON THE BASIS OF NATIONAL GEODETIC VERTICAL DATUM (N.G.V.D.) (1929)
 3. BENCH MARK'S ELEVATIONS PROVIDED BY SOUTH FLORIDA WATER MANAGEMENT DISTRICT (TOM WHIDDEN) TEL. 561-682-6181 BENCH MARK#1: OTTER 1970 FOUND BRASS DISK U.S. COAST & GEODETIC SURVEY BENCH MARK#2: F.C.E. 1980 FOUND BRASS DISK CORPS OF ENG.-U.S. ARMY FCE-3943
 4. THE SPECIFIC PURPOSE OF THIS SURVEY WAS TO SET BENCH MARKS AND LOCATE IMPROVEMENTS IN THE VICINITY OF SAID BENCH MARKS.

SURVEYOR'S CERTIFICATE:
I HEREBY CERTIFY THAT THIS "SPECIFIC PURPOSE SURVEY" WAS MADE UNDER MY RESPONSIBLE CHARGE, IS TRUE AND CORRECT TO THE BEST OF MY KNOWLEDGE AND BELIEF, AND MEETS THE MINIMUM TECHNICAL STANDARDS AS SET FORTH BY THE FLORIDA BOARD OF PROFESSIONAL SURVEYORS AND MAPPERS IN CHAPTER 61G17-6, FLORIDA ADMINISTRATIVE CODE, PURSUANT TO SECTION 472.027, FLORIDA STATUTES.

NOT VALID UNLESS SEALED WITH AN EMBOSSED SURVEYOR'S SEAL.
BISCAYNE ENGINEERING COMPANY, INC.
529 WEST FLAGLER STREET, MIAMI, FL. 33130. (305) 324-7671
STATE OF FLORIDA
DEPARTMENT OF BUSINESS AND PROFESSIONAL REGULATION
EB-0000129, LB-0000129
SURVEY DATE: 02-09-01

Signature of Mike J. Bartholomew
MIKE J. BARTHOLOMEW
PROFESSIONAL SURVEYOR AND MAPPER NO. 5666
STATE OF FLORIDA

LEGEND
MONITORING WELL
POST

BISCAYNE ENGINEERING COMPANY, INC.
Consulting Engineers · Planners · Surveyors

MIAMI
529 WEST FLAGLER STREET
PH: (305) 324-7671
FAX: (305) 324-0809

FT. LAUDERDALE
8561 SUNSET STRIP
PH: (305) 748-1800
FAX: (305) 748-5628

WEB SITE: www.bisceyengineering.com
E-MAIL: info@bisceyengineering.com



SPECIFIC PURPOSE SURVEY

FOR: DIVERSIFIED DRILLING CORP.
SCALE: 1"=40'
DATE: 02-09-01
DRAWN BY: JCF
DESIGNED BY:
APPROVED BY: M.J.B.
CHECKED BY: M.J.B.
FIELD BOOK No. 2374
PAGE No. 25-28

ORDER No.
03-75791
SHEET No.
1 of 1

This drawing is the property of Biscayne Engineering Company, Inc. and shall not be used or reproduced, in whole or in part, without permission of Biscayne Engineering Company, Inc.