



XY-CALIPER LOG

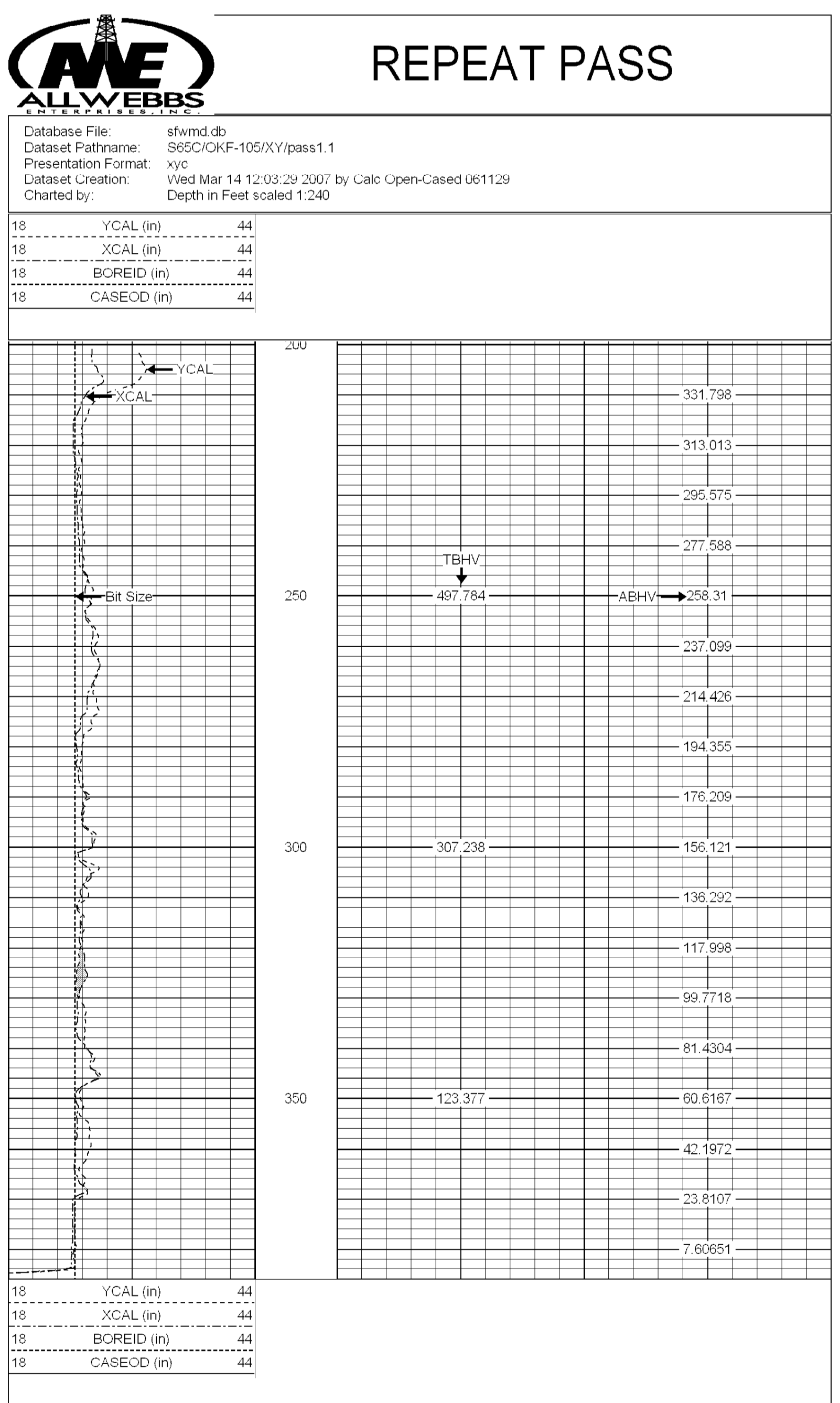
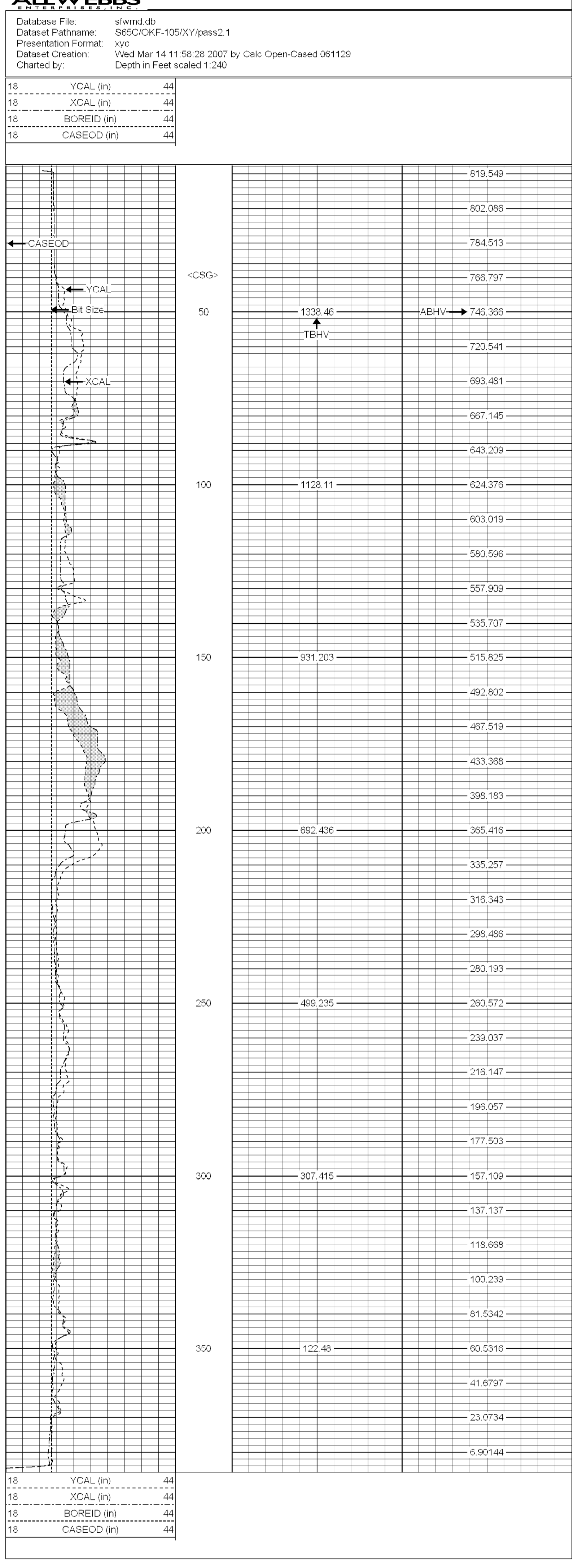
Company	SFWMD	Location	USA	State/Province	FLORIDA
Well	OKF-105	Section: Township: Range	32-35; 27		
Field	S65C	Other Services			
Country	USA				
Permanent Datum	GL	Elevation			
Log Measured From	GL	K B			
Drilling Measured From	GL	D F			
		G L			
Date	2 MAR 07				
Run Number	1				
Depth Driller	372'				
Depth Logger	372'				
Bottom Logged Interval	372'				
Top Log Interval	38'				
Casing Driller	NA				
Casing Logger	NA				
Bit Size	12.25"				
Type Fluid in Hole	MUD				
Density / Viscosity	9.5				
pH / Fluid Loss	10.3				
Source of Sample	TANK				
Rm @ Meas Temp	NA				
Rmt @ Meas Temp	NA				
Rmc @ Meas Temp	NA				
Source of Rmt / Rmc					
Rm @ BHT					
Time Circulation Stopped	10:00				
Time Logger on Bottom	13:45				
Maximum Recorded Temperature					
Equipment Number	V/A-201				
Location	S65C				
Recorded By	D. MARCHESANI				
Witnessed By	P. BRADY				

<<< Fold Here >>>

All interpretations are opinions based on inferences from electrical or other measurements and we cannot and do not guarantee the accuracy or correctness of any interpretation, and we shall not, except in the case of gross or willful negligence on our part, be liable or responsible for any loss, costs, damages, or expenses incurred or sustained by anyone resulting from any interpretation made by any of our officers, agents or employees. These interpretations are also subject to our general terms and conditions set out in our current Price Schedule.

Comments

N27 degrees; 24,129'  
W81 degrees; 6,851'  
70' accuracy with 5 sats



Calibration Report

Database File: sfwmd.db  
Dataset Pathname: KISSIMEE\_/OKF-105/XY/pass1  
Dataset Creation: Fri Mar 02 13:50:19 2007 by Log Open-Cased 061129

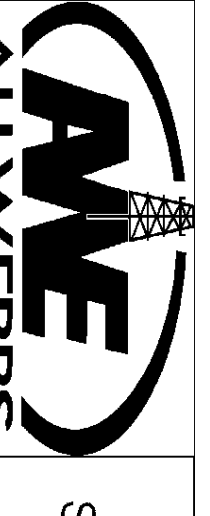
XY Caliper Calibration Report

Serial Number/Model: Probe1-Probe  
Performed: Tue Feb 27 10:44:29 2007

Ring	X Caliper	Y Caliper
1: 8 in	394.21 cps	370.397 cps
2: 11.812 in	444.12 cps	419.585 cps
3: 15.563 in	480.3 cps	456.447 cps
4: 21.25 in	592.159 cps	555.944 cps
5: 29.25 in	722.129 cps	684.63 cps
6: 42.375 in	938.665 cps	919.607 cps

Sensor	Offset (ft)	Schematic	Description	Len (ft)	OD (in)	Wt (lb)
XCAL	0.00	[Schematic Diagram]	XYC-Probe (Probe1)	5.17	3.50	99.00
YCAL	0.00					

Dataset: sfwmd.db; KISSIMEE\_/OKF-105/XY/pass1  
Total Length: 5.17 ft  
Total Weight: 99.00 lb  
O.D.: 3.50 in



**DUAL INDUCTION,  
SINGLE POINT RESISTANCE,  
GAMMA LOG**

Company	SFWMD	Location	Section: Township: Range	Other Services
Well	OKF-105	Country	USA	FLORIDA
Field	S65C	State/Province	FLORIDA	
Country	USA			
State/Prv	FLORIDA			
Company	SFWMD			
Well	OKF-105			
Field	S65C			
Country	USA			
State/Prv	FLORIDA			
Location				
Section: Township: Range				
Other Services				
Elevation				
Permanent Datum	GL			
Log Measured From	GL			
Drilling Measured From	GL			
Date	2 MAR 07			
Run Number	5			
Depth Driller	372'			
Depth Logger	372'			
Bottom Logged Interval	35'			
Top Log Interval	NA			
Casing Driller	NA			
Casing Logger	NA			
Bit Size	12.25"			
Type Fluid in Hole	MUD			
Density / Viscosity	9.5			
pH / Fluid Loss	10.3			
Source of Sample	TANK			
Rm @ Meas. Temp	NA			
Rmc @ Meas. Temp	NA			
Source of Rmt / Rmc	NA			
Rm @ BHT				
Time Circulation Stopped	10:00			
Time Logger on Bottom	15:50			
Maximum Recorded Temperature				
Equipment Number	V/A-201			
Location	S65C			
Recorded By	D. MARCHESEANI			
Witnessed By	P. BRADY			

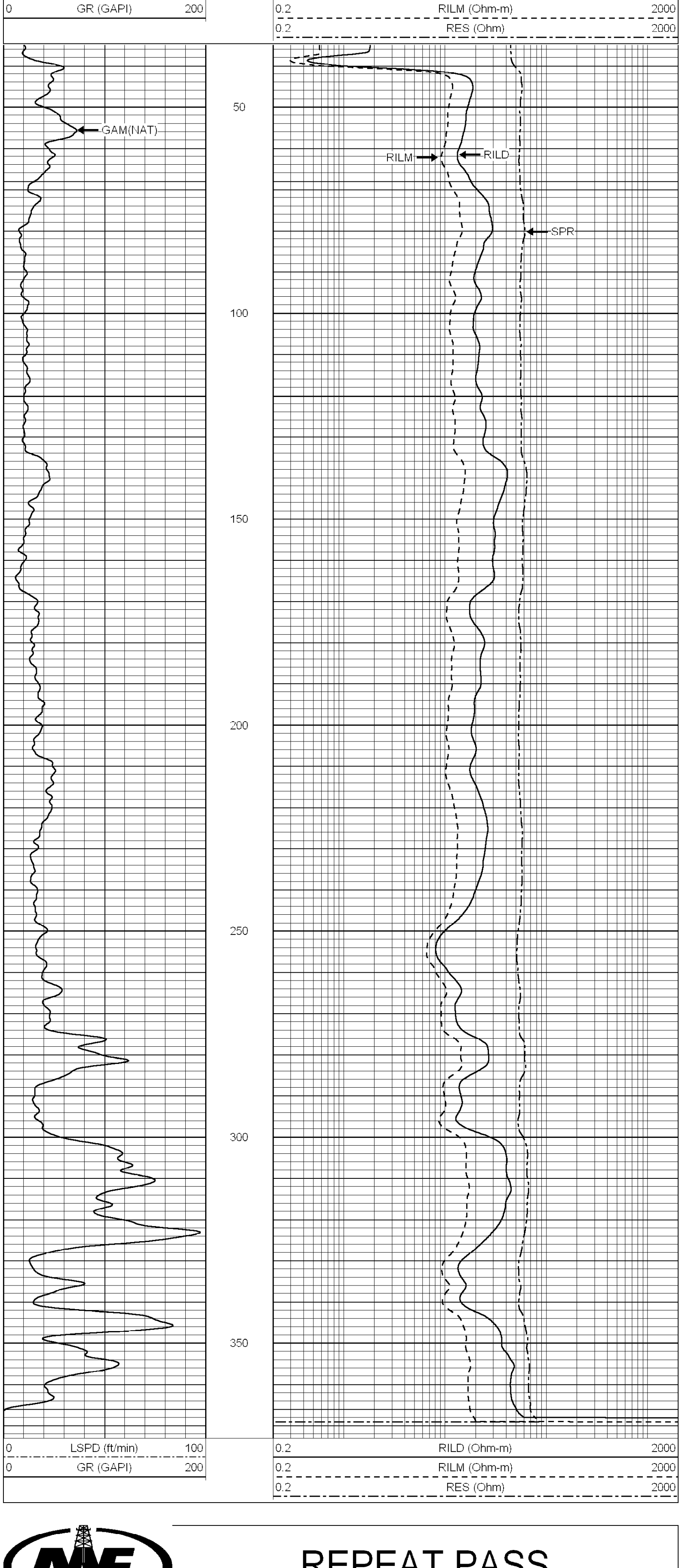
<<< Fold Here >>>

All interpretations are opinions based on inferences from electrical or other measurements and we cannot and do not guarantee the accuracy or correctness of any interpretation, and we shall not, except in the case of gross or willful negligence on our part, be liable or responsible for any loss, costs, damages, or expenses incurred or sustained by anyone resulting from any interpretation made by any of our officers, agents or employees. These interpretations are also subject to our general terms and conditions set out in our current Price Schedule.

Comments
N27 degrees; 24.129' W81 degrees; 6.851' 70' accuracy with 5 sats

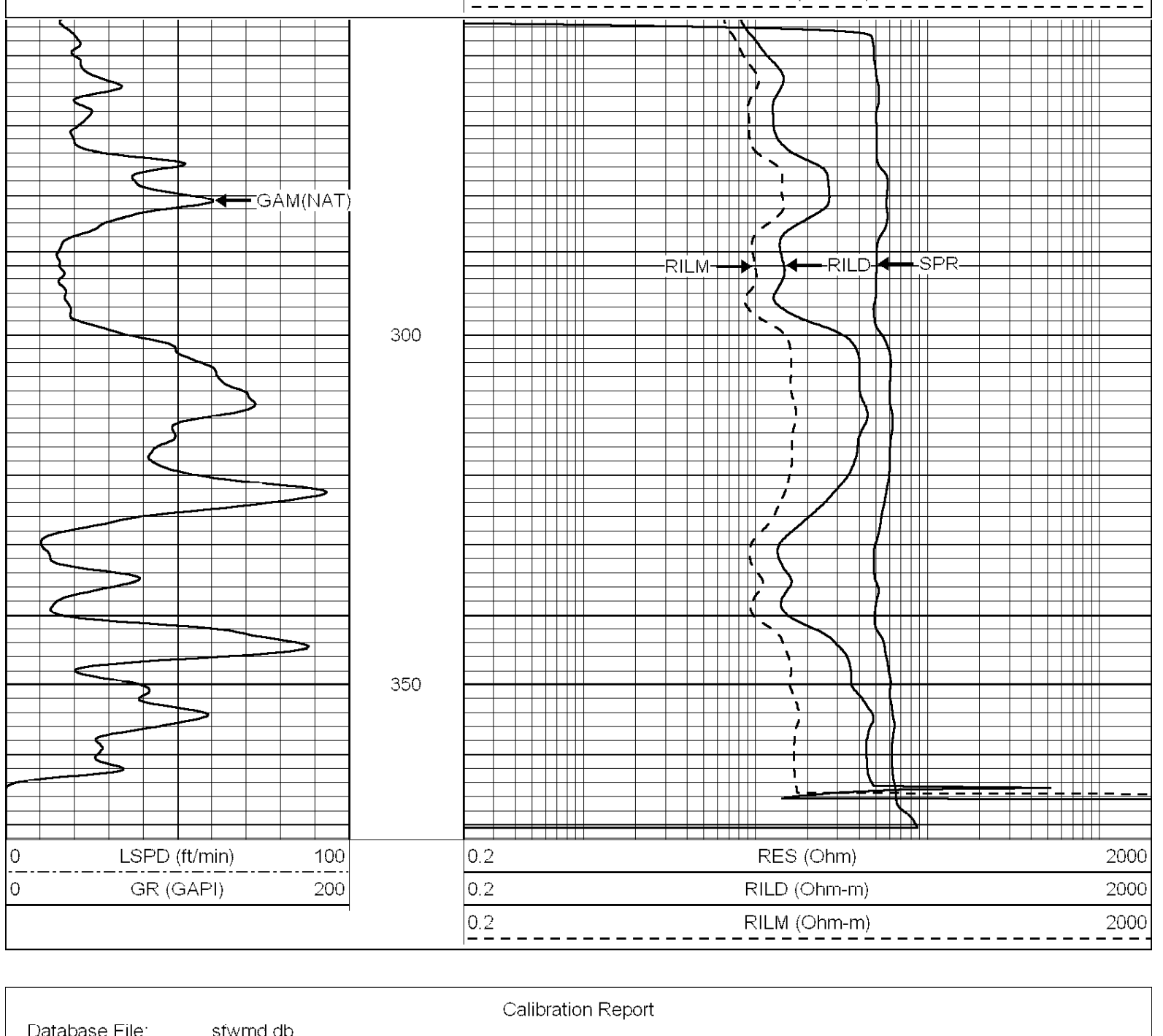
## MAIN PASS

Database File: c:\warrior\data\sfwmd\okf-105\elog.db  
 Dataset Pathname: run3/@00000a50  
 Presentation Format: awe elog  
 Dataset Creation: Fri Mar 09 07:53:56 2007  
 Charted by: Depth in Feet scaled 1:240



## REPEAT PASS

Database File: c:\warrior\data\sfwmd\okf-105\elog.db  
 Dataset Pathname: run3/@00000a50  
 Presentation Format: awe elog  
 Dataset Creation: Fri Mar 09 08:11:51 2007  
 Charted by: Depth in Feet scaled 1:240



Calibration Report	
Database File:	sfwmd.db
Dataset Pathname:	KISSIMEE_/OKF-105/DIL/pass1
Dataset Creation:	Fri Mar 02 15:49:41 2007 by Log Open-Cased 061129
Gamma Ray Calibration Report	
Serial Number:	5562
Tool Model:	6CHAN
Performed:	Sun Jun 13 15:33:21 1993
Calibrator Value:	1.0 GAPI
Background Reading:	0.0
Calibrator Reading:	1.0
Sensitivity:	1.0000 GAPI/

Sensor	Offset (ft)	Schematic	Description	Len (ft)	OD (in)	Wt (lb)
GR	6.50					
			RGDILGR-6CHAN (5562) Robertson Geologging Dual Induction Gamma Ray	7.06	1.50	13.67
CILD	2.63					
CPSD	2.63					
CILM	1.54					
CPSM	1.54					

Dataset: sfwmd.db: KISSIMEE\_/OKF-105/DIL/pass1  
 Total Length: 7.06 ft  
 Total Weight: 13.67 lb  
 O.D.: 1.50 in



**BOREHOLE COMPENSATED  
SONIC LOG WITH XY  
AND GAMMA**

Company	SFWMD	Well	OKF-105	Field	SS5C	Location	USA	State/Prov	FLORIDA	Section	Township	Range	32 35 27	Elevation	
Permanent Datum	GL	Log Measured From	GL	Drilling Measured From	GL	Drill Date	3/14/07	Drill Number	3	Drill Depth	327'	Bottom Logged Interval	327'	Top Log Interval	35'
Company	SFWMD	Well	OKF-105	Field	SS5C	Location	USA	State/Prov	FLORIDA	Section	Township	Range	32 35 27	Elevation	
Permanent Datum	GL	Log Measured From	GL	Drilling Measured From	GL	Drill Date	3/14/07	Drill Number	3	Drill Depth	327'	Bottom Logged Interval	327'	Top Log Interval	35'
Company	SFWMD	Well	OKF-105	Field	SS5C	Location	USA	State/Prov	FLORIDA	Section	Township	Range	32 35 27	Elevation	
Permanent Datum	GL	Log Measured From	GL	Drilling Measured From	GL	Drill Date	3/14/07	Drill Number	3	Drill Depth	327'	Bottom Logged Interval	327'	Top Log Interval	35'
Company	SFWMD	Well	OKF-105	Field	SS5C	Location	USA	State/Prov	FLORIDA	Section	Township	Range	32 35 27	Elevation	
Permanent Datum	GL	Log Measured From	GL	Drilling Measured From	GL	Drill Date	3/14/07	Drill Number	3	Drill Depth	327'	Bottom Logged Interval	327'	Top Log Interval	35'

<<< Fold Here >>>

All interpretations are opinions based on inferences from electrical and/or other measurements and we cannot and do not guarantee the accuracy or correctness of any interpretation, and we shall not, except in the case of gross or willful negligence on our part, be liable or responsible for any loss, costs, damages, or expenses incurred or sustained by anyone resulting from any interpretation made by any of our officers, agents or employees. These interpretations are also subject to our general terms and conditions set out in our current Price Schedule.

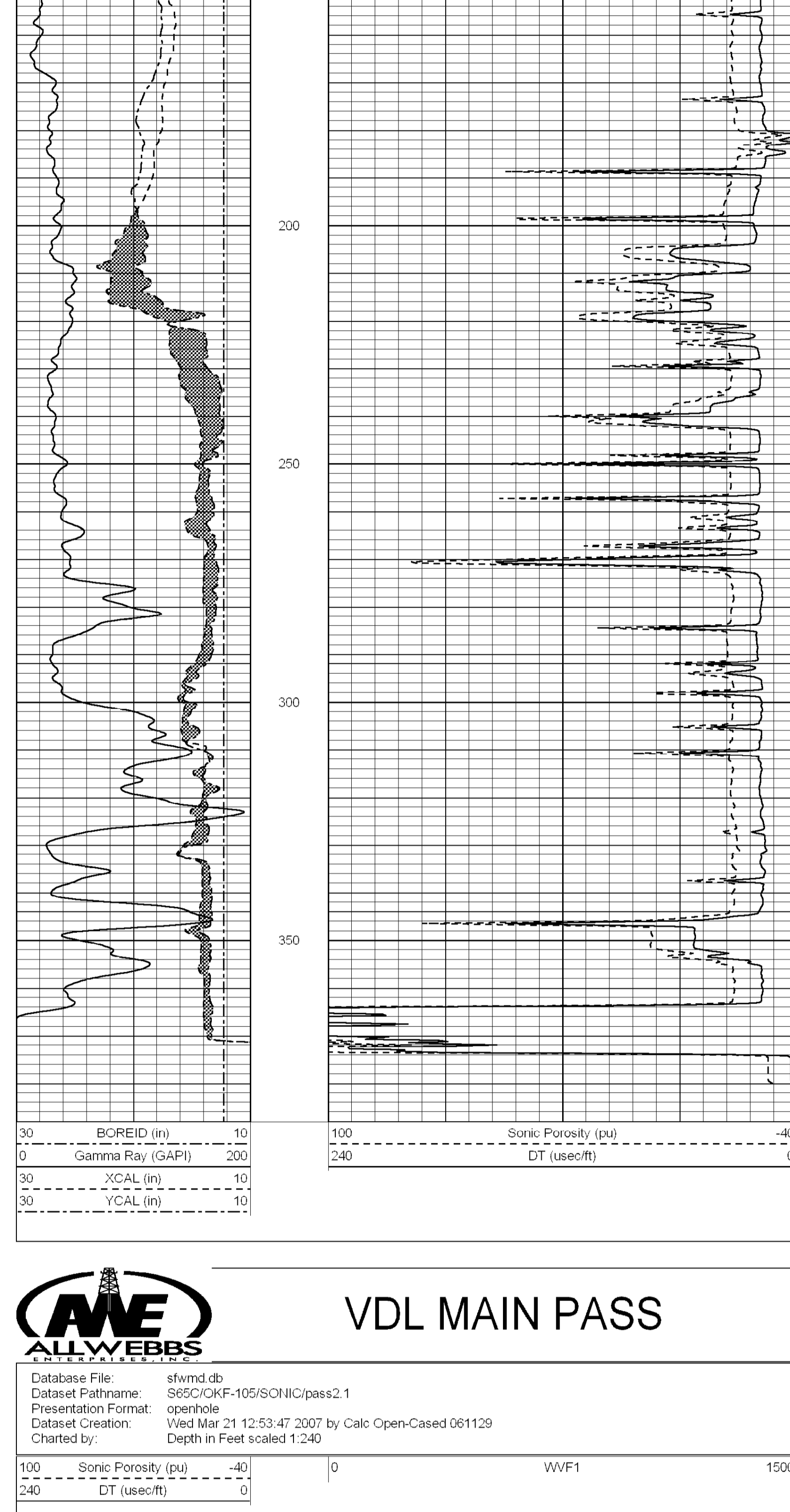
Comments

N27 degrees; 24.129'  
W81 degrees; 6.851'  
70' accuracy with 5 sats

## MAIN PASS

Database File: c:\warr\ord\data\sfwmd\okf-105\sonic\_db  
Dataset Pathname: KISSIMEE\_OKF-105/Sonic\_XY\_Gpass2  
Presentation Format: openhole  
Dataset Creation: Wed Mar 21 16:43:39 2007  
Charted by: Depth in Feet scaled 1:240

30	BOREID (in)	10	100	Sonic Porosity (pu)	-40
0	Gamma Ray (GAPI)	200	240	DT (usec/ft)	0
30	XCAL (in)	10			
30	YCAL (in)	10			

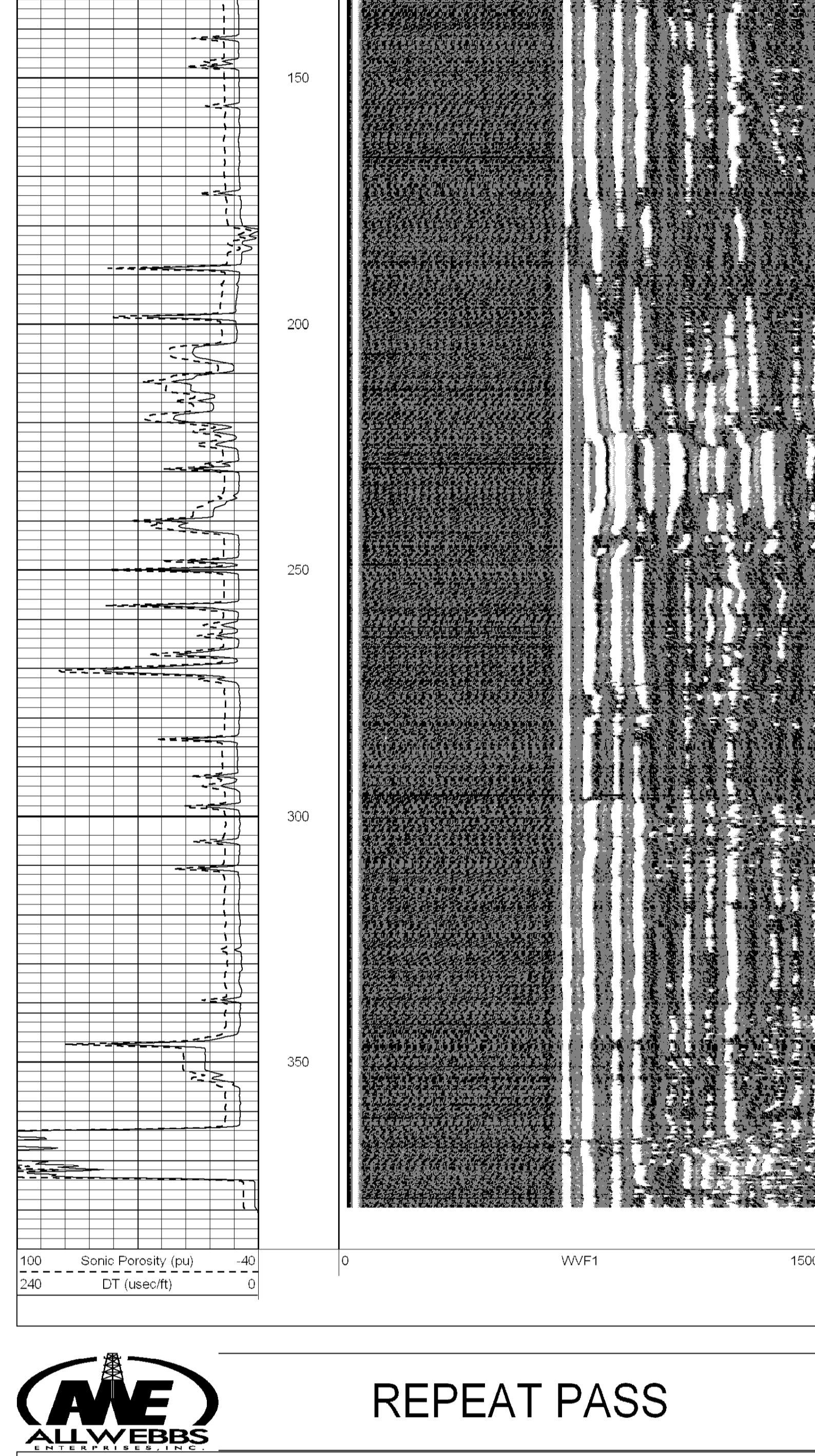


30	BOREID (in)	10	100	Sonic Porosity (pu)	-40
0	Gamma Ray (GAPI)	200	240	DT (usec/ft)	0
30	XCAL (in)	10			
30	YCAL (in)	10			

## VDL MAIN PASS

Database File: sfwmd\_db  
Dataset Pathname: S55C/OKF-105/SONIC/pass2.1  
Presentation Format: openhole  
Dataset Creation: Wed Mar 21 12:53:47 2007 by Calc Open-Cased 061129  
Charted by: Depth in Feet scaled 1:240

100	Sonic Porosity (pu)	-40	0	WVF1	1500
240	DT (usec/ft)	0			

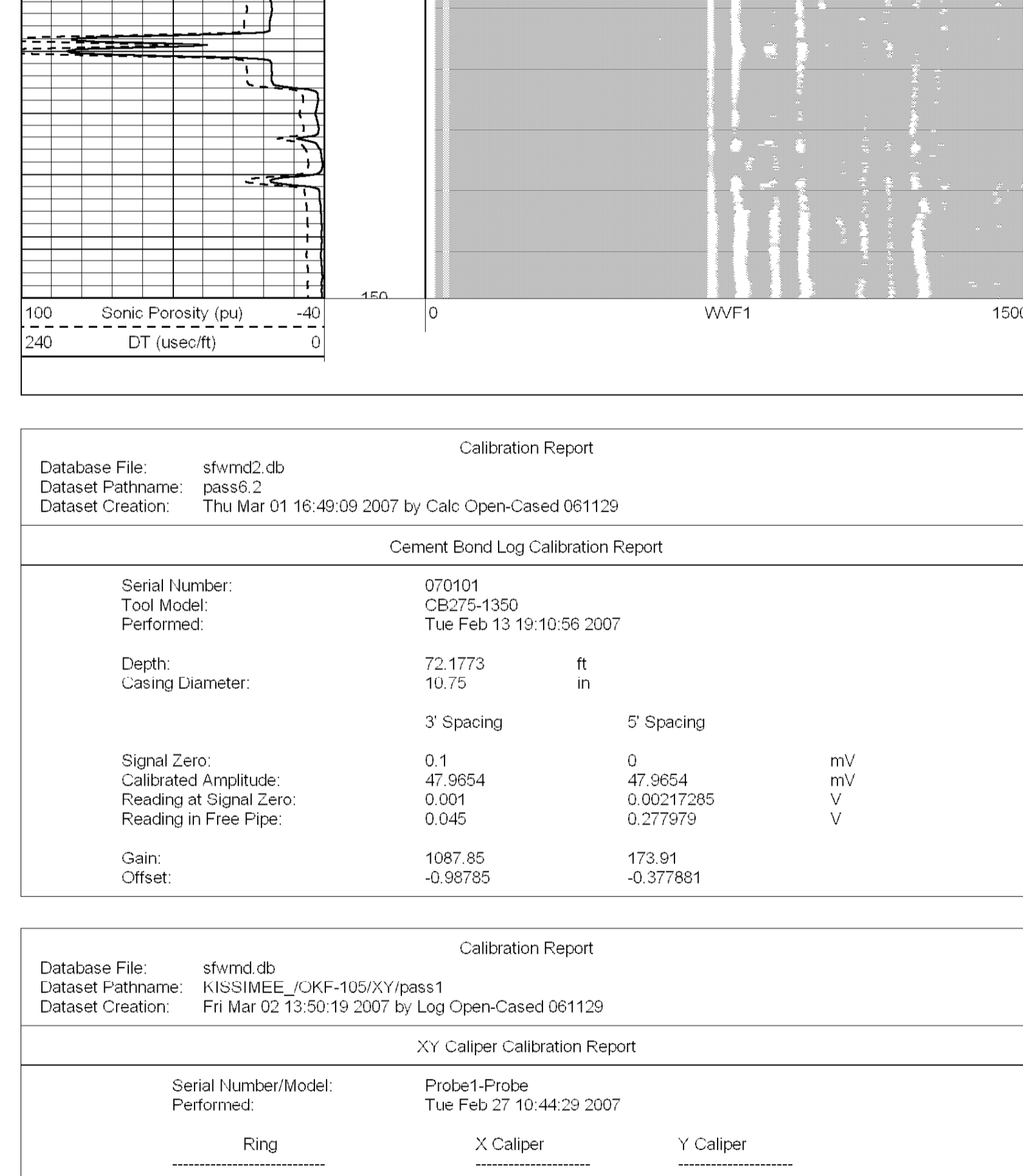


100	Sonic Porosity (pu)	-40	0	WVF1	1500
240	DT (usec/ft)	0			

## REPEAT PASS

Database File: sfwmd\_db  
Dataset Pathname: S55C/OKF-105/SONIC/pass4.1  
Presentation Format: openhole  
Dataset Creation: Wed Mar 21 16:06:23 2007 by Calc Open-Cased 061129  
Charted by: Depth in Feet scaled 1:240

100	Sonic Porosity (pu)	-40	0	WVF1	1500
240	DT (usec/ft)	0			



### Calibration Report

Database File: sfwmd2.db  
Dataset Pathname: pass6.2  
Dataset Creation: Thu Mar 01 16:49:09 2007 by Calc Open-Cased 061129

### Cement Bond Log Calibration Report

Serial Number:	070101	Tool Model:	CB275-1350
Performed:	Tue Feb 13 19:10:56 2007	Depth:	72.1773 ft
Casing Diameter:	10.75 in	3' Spacing:	0.1
Signal Zero:	47.9654 mV	5' Spacing:	0.0
Calibrated Amplitude:	0.001	Reading at Signal Zero:	0.00217285 V
Reading at Free Pipe:	0.045	Reading in Free Pipe:	0.277979 V
Gain:	1087.85	Offset:	-0.377881

### Calibration Report

Database File: sfwmd.db  
Dataset Pathname: KISSIMEE\_OKF-105/XY/pass1  
Dataset Creation: Fri Mar 02 13:50:19 2007 by Log Open-Cased 061129

### XY Caliper Calibration Report

Serial Number/Model:	Probe1-Probe	Performed:	Tue Feb 27 10:44:29 2007
Ring	X Caliper	Y Caliper	
1: 8 in	394.21 cps	370.397 cps	
2: 11.812 in	444.12 cps	419.585 cps	
3: 15.563 in	480.3 cps	456.447 cps	
4: 21.25 in	592.159 cps	555.944 cps	
5: 29.25 in	722.129 cps	684.63 cps	
6: 42.375 in	938.665 cps	919.607 cps	

### Calibration Report

Database File: sfwmd\_db  
Dataset Pathname: KISSIMEE\_OKF-105/DIL/pass2  
Dataset Creation: Fri Mar 02 16:09:01 2007 by Log Open-Cased 061129

### Gamma Ray Calibration Report

Serial Number:	5562	Tool Model:	6CHAN
Performed:	Sun Jun 13 15:33:21 1993	Calibrator Value:	1.0 GAPI
Background Reading:	0.0	Calibrator Reading:	1.0
Sensitivity:	1.0000		GAPI/

Sensor	Offset (ft)	Schematic	Description	Len (ft)	OD (in)	Wt (lb)
WVF1	4.25		SLT3Probe-Probe275 (1) Probe	8.83	2.75	93.00
WVF2	4.25					
WVF3	3.25					
WVF4	3.25					

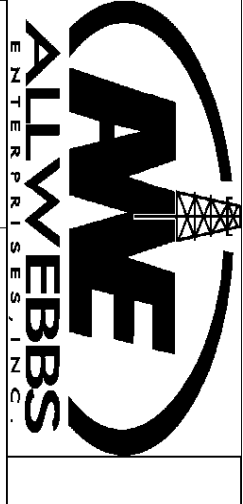
Dataset: sfwmd db: KISSIMEE\_OKF-105/SONIC/pass1  
Total Length: 5.17 ft  
Total Weight: 93.00 lb  
O.D.: 2.75 in

Sensor	Offset (ft)	Schematic	Description	Len (ft)	OD (in)	Wt (lb)
XCAL	0.00		XYC-Probe (Probe1)	5.17	3.50	99.00
YCAL	0.00					

Dataset: sfwmd db: KISSIMEE\_OKF-105/XY/pass2  
Total Length: 7.06 ft  
Total Weight: 13.67 lb  
O.D.: 3.50 in

Sensor	Offset (ft)	Schematic	Description	Len (ft)	OD (in)	Wt (lb)
GR	6.50		RGDILGR-6CHAN (5562) Robertson Geologging Dual Induction Gamma Ray	7.06	1.50	13.67
CILD	2.63					
CPSD	2.63					
CILM	1.54					
CPSM	1.54					

Dataset: sfwmd db: KISSIMEE\_OKF-105/DIL/pass2  
Total Length: 7.06 ft  
Total Weight: 13.67 lb  
O.D.: 1.50 in



XY CALIPER LOG  
WITH GAMMA

Company	SFWMD	Well	S65C	Field	OKF-105	County	OKEECHOBEE	State	FLORIDA
Location	Section: Township: Range 32. 35. 27	Location	Other Services	Permanent Datum	GL	Elevation	K.B.	Log Measured From	GL
Date	03/12/07	Run Number	1	Depth Driller	385	Depth Logger	385	Bottom Logged Interval	385
Top Log Interval	20'	Open Hole Size	25"	Type Fluid	MUD	Density / Viscosity	N/A/N/A	Max. Recorded Temp.	N/A
Estimated Cement Top	N/A	Time Well Ready	15:00	Time Logger on Bottom	V.A.-201	Equipment Number	S65C	Recorded By	D. MARCHESANI
Witnessed By	P. BRADY	Bit	Size	Weight	From	To	From	To	
Run Number	Bit	Size	Weight	From	To	From	To		
Casing Record	Size	Wt/LF	Top	Bottom					
Casing String									
Production String									
Production Liner									

<<< Fold Here >>>

All interpretations are opinions based on inferences from electrical or other measurements and we cannot and do not guarantee the accuracy or correctness of any interpretation, and we shall not, except in the case of gross or willful negligence on our part, be liable or responsible for any loss, costs, damages, or expenses incurred or sustained by anyone resulting from any interpretation made by any of our officers, agents or employees. These interpretations are also subject to our general terms and conditions set out in our current Price Schedule.

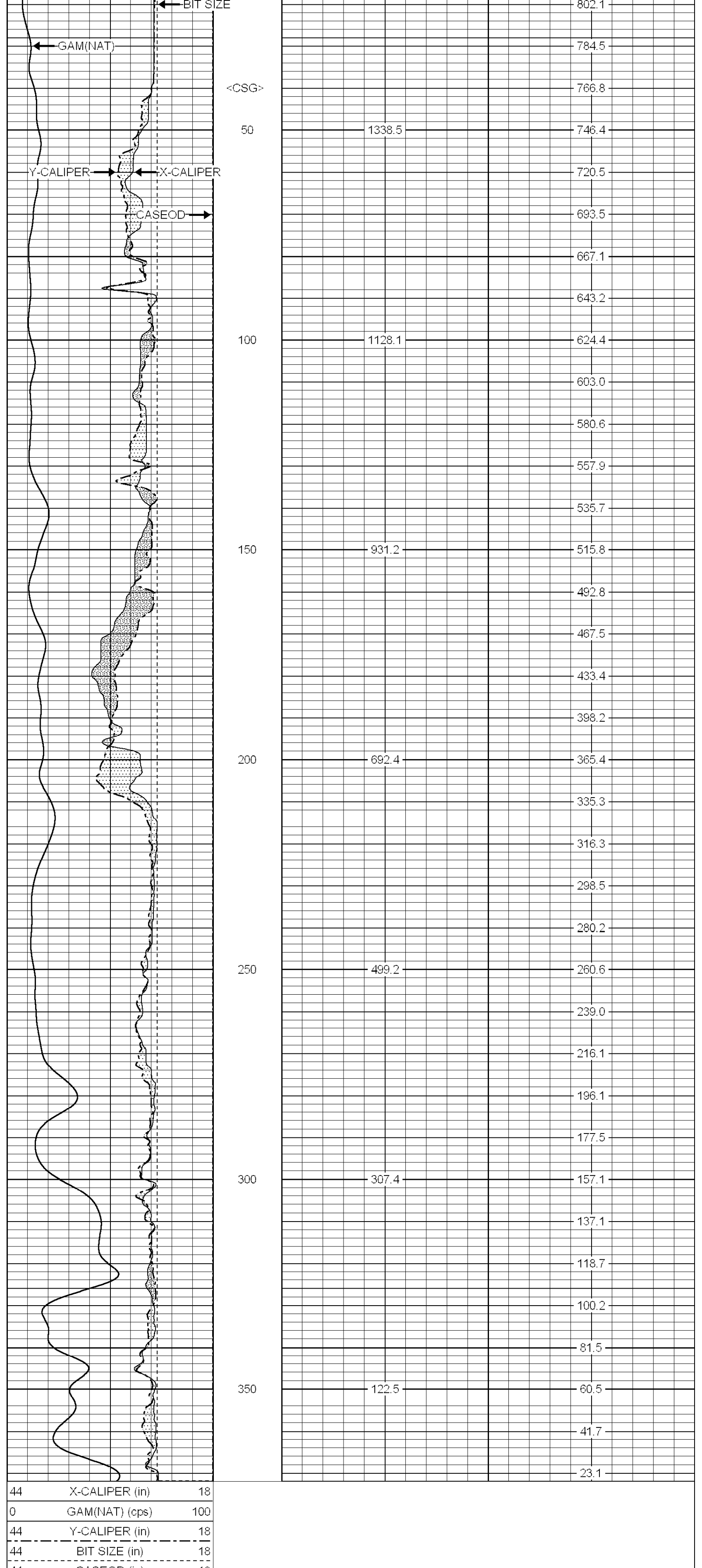
Comments

GPS COORDINATES:  
N27 degrees; 24.129'  
W81 degrees; 6.851'  
70' accuracy with 5 sats

## MAIN PASS

Database File:	c:\warrior\data\sfwmd\okf-105\12 mar 07 logs\xy_gam.db
Dataset Pathname:	pass1
Presentation Format:	xy_gam
Dataset Creation:	Tue Apr 17 09:20:30 2007
Charted by:	Depth in Feet scaled 1:240

44	X-CALIPER (in)	18
0	GAM(NAT) (cps)	100
44	Y-CALIPER (in)	18
44	BIT SIZE (in)	18
44	CASEOD (in)	18

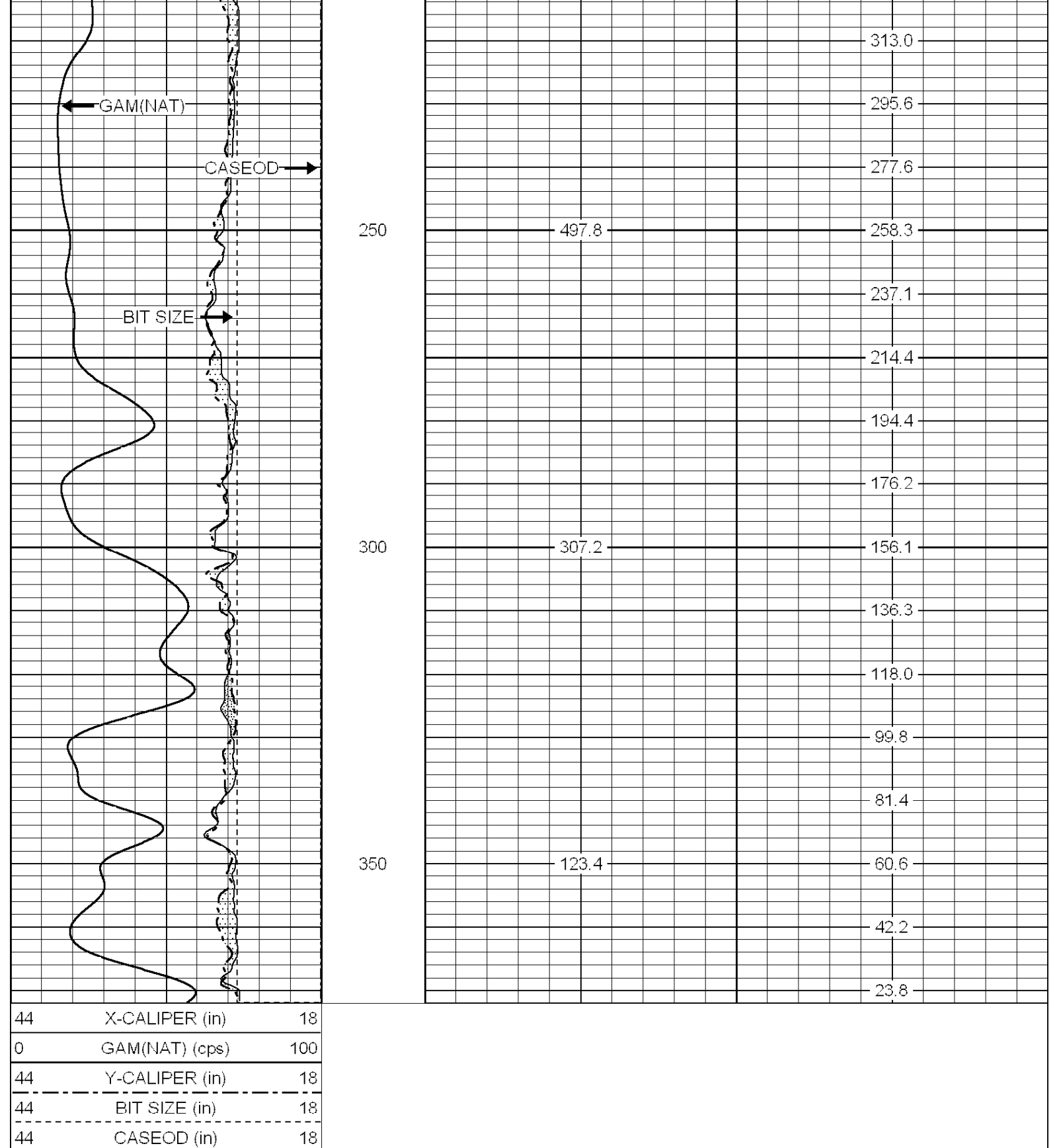


44	X-CALIPER (in)	18
0	GAM(NAT) (cps)	100
44	Y-CALIPER (in)	18
44	BIT SIZE (in)	18
44	CASEOD (in)	18

## REPEAT PASS

Database File:	c:\warrior\data\sfwmd\okf-105\12 mar 07 logs\xy_gam.db
Dataset Pathname:	pass2
Presentation Format:	xy_gam
Dataset Creation:	Tue Apr 17 09:34:54 2007
Charted by:	Depth in Feet scaled 1:240

44	X-CALIPER (in)	18
0	GAM(NAT) (cps)	100
44	Y-CALIPER (in)	18
44	BIT SIZE (in)	18
44	CASEOD (in)	18



44	X-CALIPER (in)	18
0	GAM(NAT) (cps)	100
44	Y-CALIPER (in)	18
44	BIT SIZE (in)	18
44	CASEOD (in)	18

Calibration Report  
Database File: c:\warrior\data\sfwmd\okf-105\12 mar 07 logs\xy\_gam.db  
Dataset Pathname: pass1  
Dataset Creation: Tue Apr 17 09:20:30 2007

XY Caliper Calibration Report

Serial Number/Model:	Probe1-Probe	
Performed:	Tue Feb 27 10:44:29 2007	
Ring	X Caliper	Y Caliper
1: 8 in	394.21 cps	370.397 cps
2: 11.812 in	444.12 cps	419.585 cps
3: 15.563 in	480.3 cps	456.447 cps
4: 21.25 in	592.159 cps	555.944 cps
5: 29.25 in	722.129 cps	684.63 cps
6: 42.375 in	938.665 cps	919.607 cps

Sensor	Offset (ft)	Schematic	Description	Len (ft)	OD (in)	Wt (lb)
XCAL	0.00	[Schematic Diagram]	XYC-Probe (Probe1)	5.17	3.50	99.00
YCAL	0.00					

Dataset: xy\_gam.db: field/well/run1/pass1  
Total Length: 5.17 ft  
Total Weight: 99.00 lb  
O.D: 3.50 in