

XY CALIPER LOG
WITH GAMMA

Company	SFWMD	Well	S65C	Field	OKF-105	County	OKEECHOBEE	State	FLORIDA
Location	Section: Township: Range 32. 35. 27	Location	Other Services	Permanent Datum	GL	Elevation	K.B.	Log Measured From	GL
Date	03/12/07	Run Number	1	Depth Driller	385	Depth Logger	385	Bottom Logged Interval	385
Top Log Interval	20'	Open Hole Size	25"	Type Fluid	MUD	Density / Viscosity	N/A/N/A	Max. Recorded Temp.	N/A
Estimated Cement Top	N/A	Time Well Ready	15:00	Time Logger on Bottom	V.A.-201	Equipment Number	S65C	Recorded By	D. MARCHESANI
Witnessed By	P. BRADY	Bit	Size	Weight	From	To	From	To	
Run Number	Bit	Size	Weight	From	To	From	To		
Casing Record	Size	Wt/LF	Top	Bottom					
Surface String									
Production String									
Production Liner									

<<< Fold Here >>>

All interpretations are opinions based on inferences from electrical or other measurements and we cannot and do not guarantee the accuracy or correctness of any interpretation, and we shall not, except in the case of gross or willful negligence on our part, be liable or responsible for any loss, costs, damages, or expenses incurred or sustained by anyone resulting from any interpretation made by any of our officers, agents or employees. These interpretations are also subject to our general terms and conditions set out in our current Price Schedule.

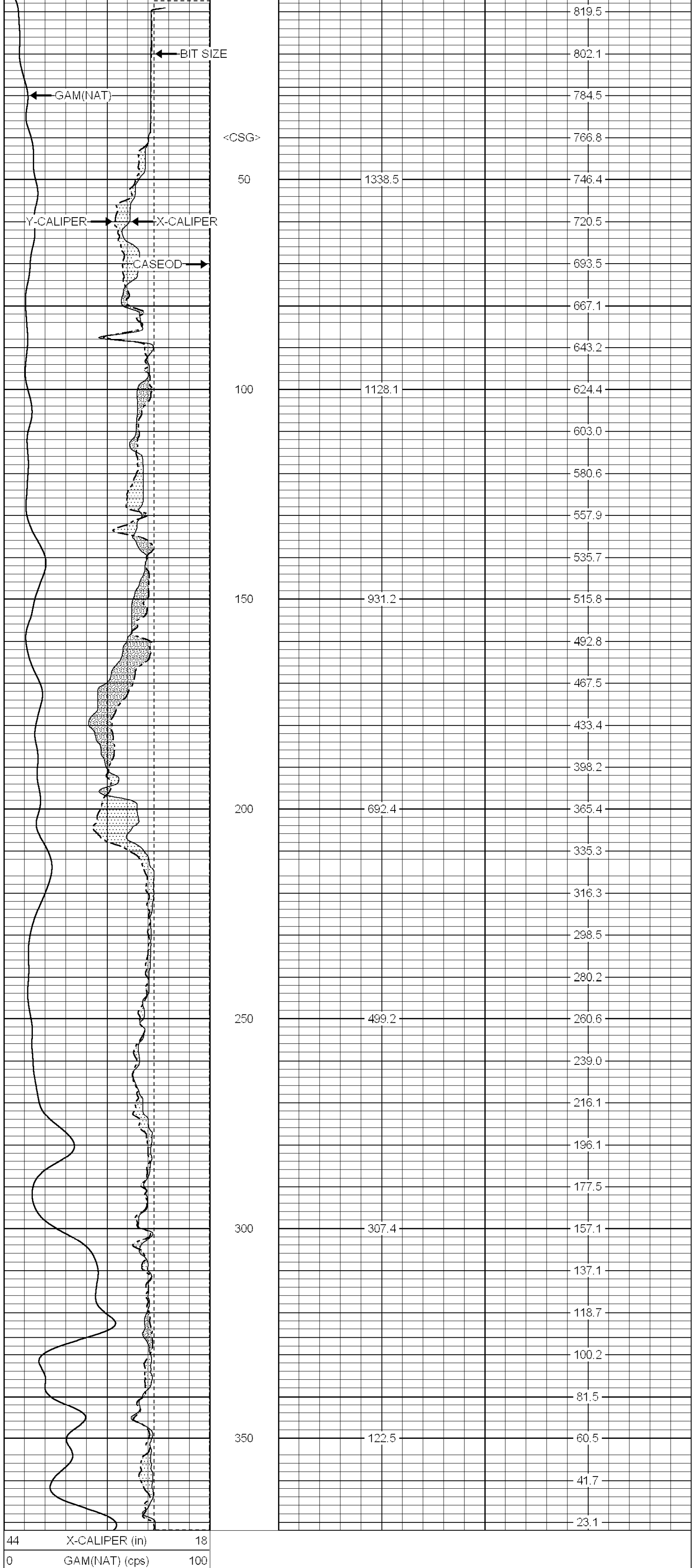
Comments

GPS COORDINATES:
N27 degrees; 24.129'
W81 degrees; 6.851'
70' accuracy with 5 sats

MAIN PASS

Database File: c:\warrior\data\sfwmd\okf-105\12 mar 07 logs\xy_gam.db
 Dataset Pathname: pass1
 Presentation Format: xy_gam
 Dataset Creation: Tue Apr 17 09:20:30 2007
 Charted by: Depth in Feet scaled 1:240

44	X-CALIPER (in)	18
0	GAM(NAT) (cps)	100
44	Y-CALIPER (in)	18
44	BIT SIZE (in)	18
44	CASEOD (in)	18



44	X-CALIPER (in)	18
0	GAM(NAT) (cps)	100
44	Y-CALIPER (in)	18
44	BIT SIZE (in)	18
44	CASEOD (in)	18

REPEAT PASS

Database File: c:\warrior\data\sfwmd\okf-105\12 mar 07 logs\xy_gam.db
 Dataset Pathname: pass2
 Presentation Format: xy_gam
 Dataset Creation: Tue Apr 17 09:34:54 2007
 Charted by: Depth in Feet scaled 1:240

44	X-CALIPER (in)	18
0	GAM(NAT) (cps)	100
44	Y-CALIPER (in)	18
44	BIT SIZE (in)	18
44	CASEOD (in)	18



44	X-CALIPER (in)	18
0	GAM(NAT) (cps)	100
44	Y-CALIPER (in)	18
44	BIT SIZE (in)	18
44	CASEOD (in)	18

Calibration Report
 Database File: c:\warrior\data\sfwmd\okf-105\12 mar 07 logs\xy_gam.db
 Dataset Pathname: pass1
 Dataset Creation: Tue Apr 17 09:20:30 2007

XY Caliper Calibration Report

Serial Number/Model:	Performed:	Probe1-Probe	Tue Feb 27 10:44:29 2007
Ring		X Caliper	Y Caliper
1: 8 in		394.21 cps	370.397 cps
2: 11.812 in		444.12 cps	419.585 cps
3: 15.563 in		480.3 cps	456.447 cps
4: 21.25 in		592.159 cps	555.944 cps
5: 29.25 in		722.129 cps	684.63 cps
6: 42.375 in		938.665 cps	919.607 cps

Sensor	Offset (ft)	Schematic	Description	Len (ft)	OD (in)	Wt (lb)
XCAL	0.00	[Schematic Diagram]	XYC-Probe (Probe1)	5.17	3.50	99.00
YCAL	0.00					

Dataset: xy_gam.db; field/well/run1/pass1
 Total Length: 5.17 ft
 Total Weight: 99.00 lb
 O.D.: 3.50 in