



# RMBAKER LLC

WELL 2ASTE-GW1  
UWI 2ASTE-GW1

Geology and Geophysics

8600 Oldbridge Lane  
Orlando, FL 32819  
mobile ph 407-733-8958

LOG STAGE COMPLETION

rob@rmbaker.com  
www.rmbaker.com

HEADER NOTES:

COMP	SFWMD
LOC	WATER CONSERVATION AREA 2
FLD	WATER CONSERVATION AREA 2
CNTY	BROWARD
STAT	FL
PROV	FL
CTRY	USA

LATI	26.3238	X			ALL SERVICES: DUAL INDUCTION NATURAL GAMMA
LONG	-80.4142	Y			
GDAT	WGS84	HDAT			
SEC		ELEV			
TWP		V DAT			
RGE					

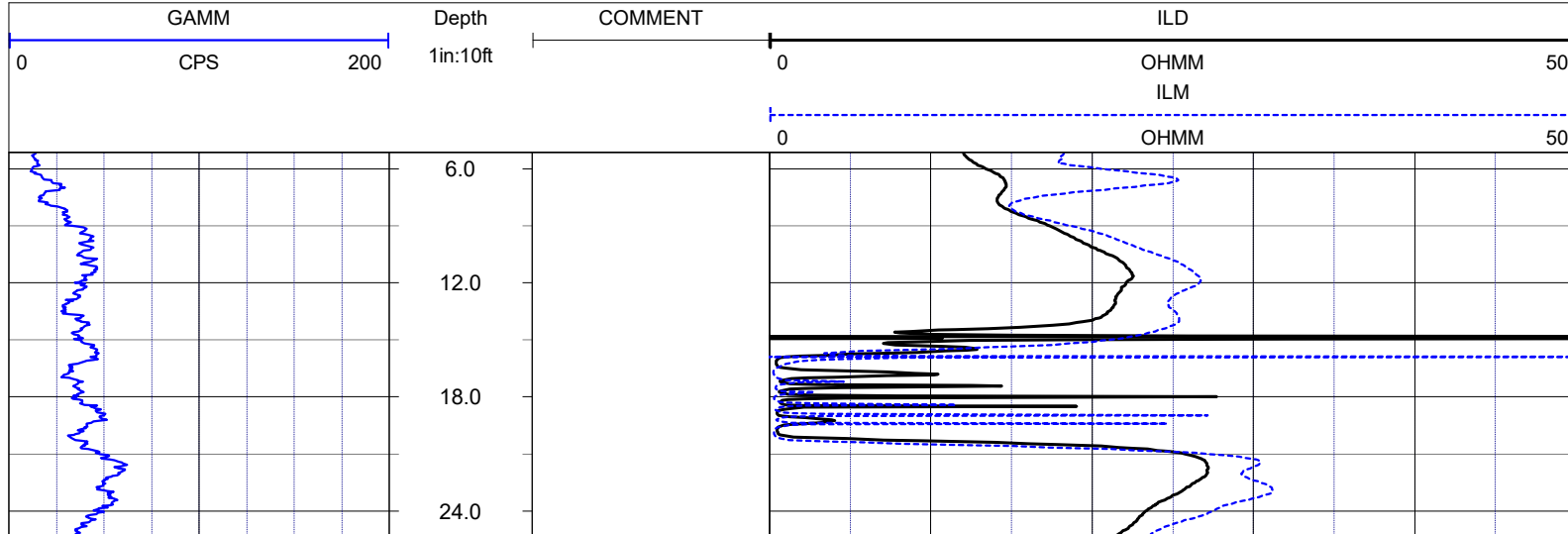
PERMANENT DATUM:  
LOG MEASURED FROM: TOP OF CASING  
DRILLING MEASURED FROM:

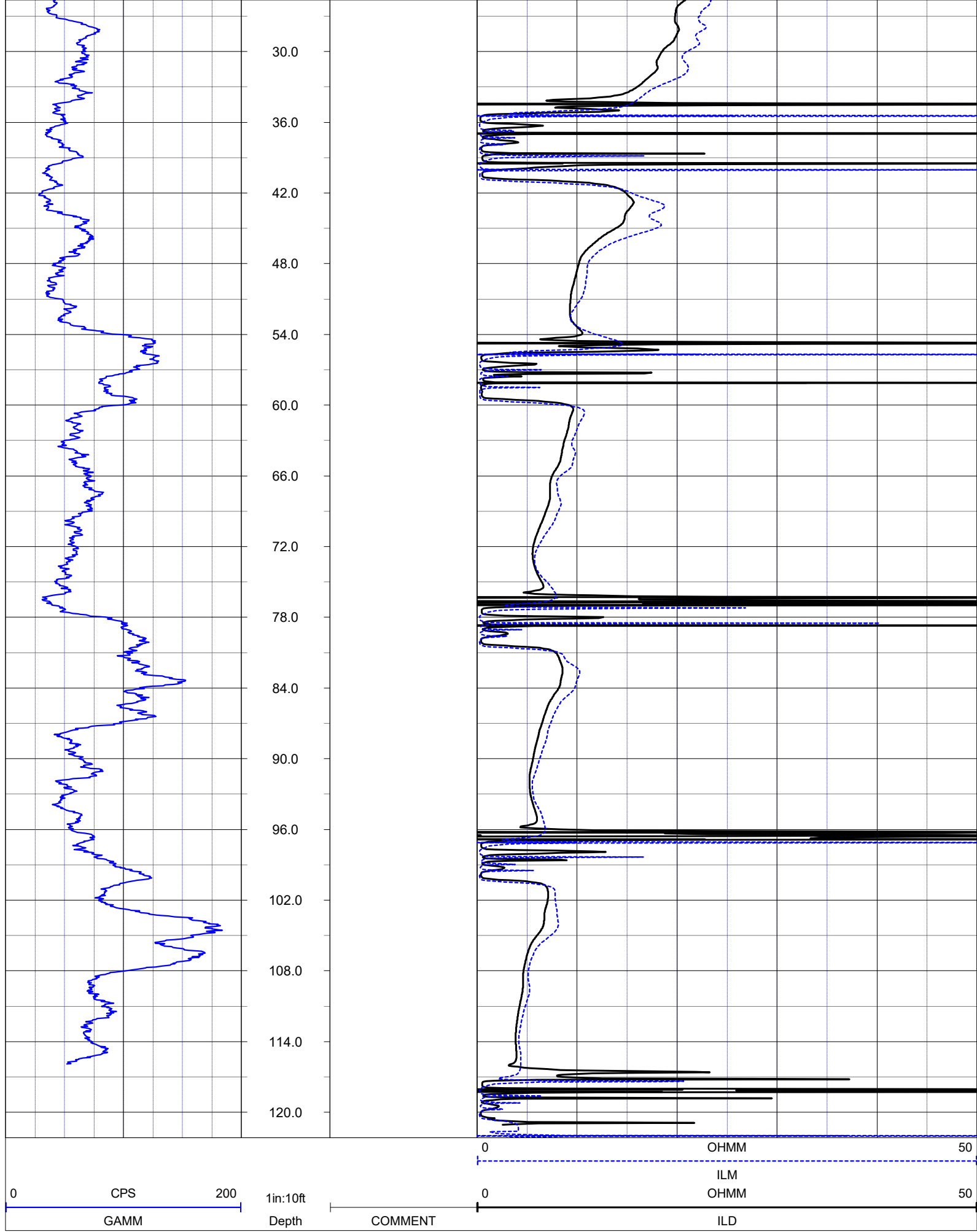
DATE	25 Sep 18	TYPE FLUID IN HOLE	WATER
RUN No	1	LOGGING SPEED (FT/MIN)	25
TYPE LOG	DUAL INDUCTION	TROLLING DIRECTION	UP
DEPTH-DRILLER	125	PUMPING RATE (GPM)	N/A
DEPTH-LOGGER	123.4		
DRILLER	N/A		
RECORDED BY	RMB		
SRVC	RMBAKER	API	N/A
WITNESSED BY	SFWMD	LIC	N/A

BOREHOLE RECORD		CASING RECORD				
RUN NO.	BIT FROM	TO	SIZE	MAT.	FROM	TO
1			2	PVC	0	123.4

### LOG CODES

3-arm caliper	<b>CAL</b>	long normal resistivity	<b>RLN</b>	deep induction conductivity	<b>IDC</b>
natural gamma (CPS)	<b>GAMM</b>	8 inch resistivity	<b>R8</b>	shallow induction conductivity	<b>ISC</b>
spontaneous potential	<b>ESP</b>	32 inch resistivity	<b>R32</b>	sonic interval velocity	<b>DT</b>
single point resistance	<b>RES</b>	deep induction resistivity	<b>ILD</b>	sonic porosity (RHG method)	<b>SPHI</b>
short normal resistivity	<b>RSN</b>	shallow induction resistivity	<b>ILM</b>	repeat designation	<b>R</b>





**NOTES:**  
 While due care has been exercised in the performance of these measurements and observations, in accordance with methodologies utilized by the general practitioner, BEMAKER LLC can make no representation

While due care has been exercised in the performance of these measurements and observations, in accordance with methodologies utilized by the general practitioner, RWIBAKER LLC can make no representations, warranties, or guarantees with respect to latent or concealed conditions that may exist, which may be beyond the detection capabilities of the methodologies used, or that may extend beyond the areas and depths surveyed.

The geophysical well logs show subsurface conditions as they existed at the dates and locations shown, and it is not warranted that they are representative of subsurface conditions at other locations and times. If, at any time, different subsurface conditions from those observed are determined to be present, we must be advised and allowed to review and revise our observations if necessary.

Florida Licensed Geology Business GB 458

**END OF LOG**

---