

LEVELS TO MONITORING GAGE ANGL

STA	+	#1	-	ELEV	BMELEV
D.C.B.M.					6.67
	6.24 1.03	12.91			
T.P			4.59 2.68	8.32	
	4.99 2.27	13.31			
T.P			5.47 1.80	7.84	
	4.58 2.69	12.42			
T.P			5.15 2.11	7.27	
	5.01 2.25	12.28			
T.P			5.12 2.15	7.16	
	5.41 1.86	12.57			
TP			5.45 1.81	7.12	
	4.99 2.27	12.11			
T.P			4.88 2.39	7.23	
	4.87 2.40	12.10			

CONTID ON PG-66

COMMENTS

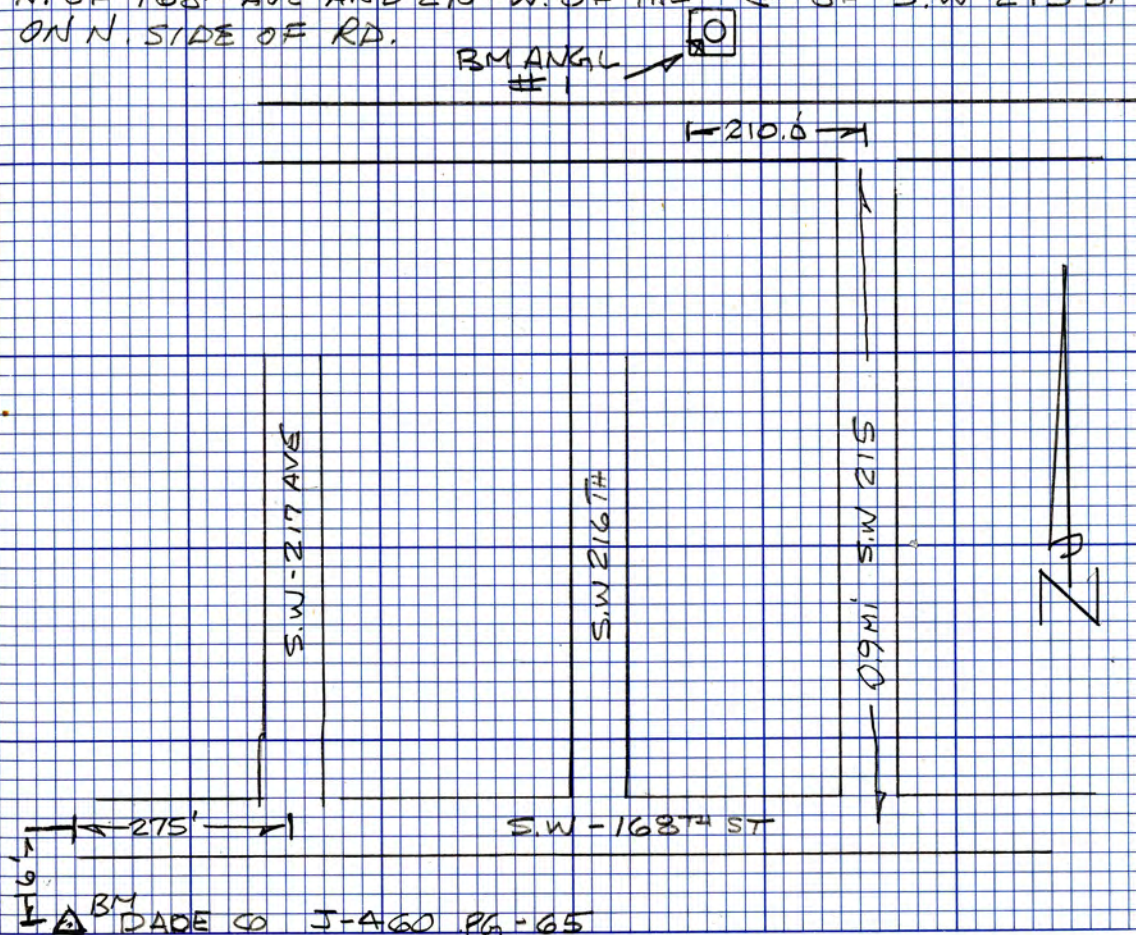
DADE CO. B.M. J-460 FD. 275 W OF THE C OF
S.W 217 AVE AND 16.0' S. OF S.W. 168TH BRASS
ROD IN CONCRETE

STA	CONT'D FROM Pg-66	H1	—	ELEV	BMELEV
TP		12.21	4.74 2.53	7.47	
	4.76 2.51	12.23			
T.P.			4.85 2.42	7.38	
	5.26 2.01	12.04			
B.M			5.25 2.02	7.39	7.39
			RETURN LEVELS		
B.M				7.39	7.39
	5.20 2.07	12.59			
T.P.			5.21 2.05	7.38	
	4.89 2.37	12.27			
TP			4.82 2.45	7.45	
	4.80 2.47	12.25			
TP			5.04 2.22	7.21	
	5.34 1.92	12.55			

CONT'D ON PG-68

COMMENTS

BM ANGL #1 IS SET ON S.W. COR. OF THE OF PAD OF MONITORING GAUGE ANGL. BM IS 0.9MI N. OF ^{SW} 168TH AVE AND 210' W. OF THE C. OF S.W 215 ST ON N. SIDE OF RD.



CONT'D. FROM Pg. 67

STA	+ H1	-	ELEV	B/ELEV
T.P.	12.55	5.38 1.89	7.17	
	5.14 2.13	12.31		
T.P.		5.13 2.13	7.18	
	5.18 2.08	13.36		
T.P.		5.17 2.10	7.19	
	5.20 2.07	12.39		
T.P.		5.18 2.08	7.21	
	4.98 2.28	12.19		
T.P.		5.03 2.24	7.16	
	5.66 1.61	12.82		
TP		5.71 1.55	7.11	
	5.12 2.14	12.23		
TP		5.05 2.22	7.18	
	5.07 2.20	12.25		

CONT'D. ON Pg. 69

COMMENTS

LEVELS TO MONITORING GAGE ANGL

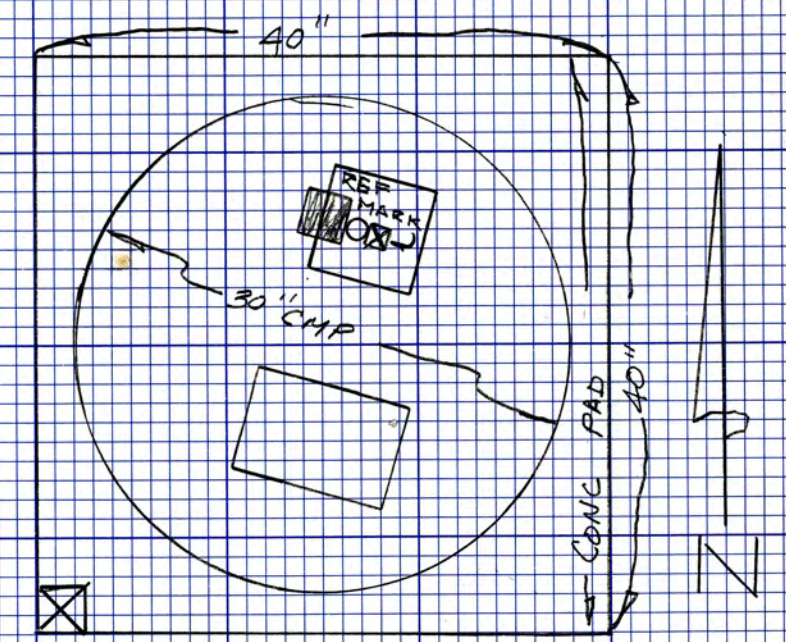
STA	+	H.I	-	ELEV	BMELEV
BM					7.39
	5.01	12.40			
	7.26				
ANGL			3.23	9.17	
			4.04		
ANGL				9.17	
	3.19	12.36			
	4.08				
BM			4.97	7.39	7.39
			2.30	-	

B.M ANGL -1 Pg-67

ELEV. SET ON 9x9" ALUM. PLATE OVER WELL OPENING
 SET AT MAGIC MARKER SQ. WITH "X" MARKED REF. POINT
 ASSUMED ELEV. 9.00'

~~BM~~ ANGL AS ABOVE

B.M ANGL -1 Pg-67



SOUTH FLORIDA WATER MANAGEMENT DISTRICT



Survey Data Entry and Retrieval Application (SDERA) Print Output

Control Point Search Results

Derived Data - Denoted By: **

Designation	ANGL1	Record State	ACCEPTED
NGS PID			
Project Name	ANGEL WELL SITE	Date Entered/Updated	11/25/2015
Updated By	hehmke	Status	
Party Chief	HOLLIN JR, ARTHUR	Type	V
Monument Set By	SOUTH FLORIDA WATER MANAGEMENT DISTRICT	Date Established	01/01/1993
County	MIAMI-DADE COUNTY	Section	21
Township	55	Range	38
Quadrangle		Offset (29 to 88)	
NGS Source BM		CCR Link	
Ctrl Pt Source(s)			

<u>Horizontal</u>	<u>NAD 1927</u>	<u>NAD 1983</u>	<u>Vertical</u>	<u>NGVD 1929</u>	<u>NAVD 1988</u>
Latitude		25 37 23.2	Class		
Longitude		80 32 32.0	Order	3	
Northing(Y)			Elevation	7.39	
Easting(X)			Measurement Unit	Feet	
Class					
Order					
NAD83 Adj Year					

Field Book
DCS 1

Field Book Pages
65-71

Stamping
"X" Cut

How to Reach
Benchmark is 0.9 mile North of S.W 168th Avenue and 210 feet West of the Center line of S.W.215th Street on the North side of the road.
Bench mark is set on the southwest corner of the pad on the monitoring gage ANGL.
Source Benchmark: Dade County J460. El. 6.67 NGVD29

Description

DISCLAIMER:

The South Florida Water Management District (hereinafter referred to as the DISTRICT) shall not be held liable for improper or incorrect use of the data, information, apparatus, products, processes or materials described and/or contained herein. These data, information, apparatus, products, processes, materials and related graphics are not legal documents and are not intended to be used as such. The user hereby recognizes that the information, data, apparatus, products, processes and materials are dynamic and may change over time without notice. However, the DISTRICT makes no commitment to update the information, data, apparatus, products, processes or materials contained herein.

LOCATOR-INDEX
5845

BENCHMARK NO.
J-460

ELEVATION
6.67 Ft.

SW 168 ST --- 16' SOUTH OF C/L

SW 217 AVE --- 275' WEST OF C/L

9' NORTH OF A DRAINAGE DITCH

BM IS A BRASS BAR IN CONC MON.
1.5' SOUTH OF A DADE CO WITNESS POST

863
~~854~~

LOCATOR-INDEX
5855

BENCHMARK NO.
J-461

ELEVATION
6.53 Ft.

SW 168 ST --- 15.2' SOUTH OF C/L

SW 227 AVE (THEORETICAL) ---

107.5' EAST OF AN "ARVIDA SECTION MARKER" (CONC POST 4' ABOVE GROUND)

10.5' NORTH OF NORTH BANK OF A DRAINAGE DITCH, 4' NW OF A POWER POLE

BM IS A BRASS BAR IN CONC MON.
2.0' SE OF A DADE CO WITNESS POST

~~854~~
864

LOCATOR-INDEX
5900

BENCHMARK NO.
J-498

ELEVATION
8.49 Ft.

SW 117 AVE RD --- 77.9' WEST OF C/L PROJECTED FROM THE NORTH

SW 88 ST --- 0.5' SOUTH OF SOUTH EDGE OF PAVEMENT

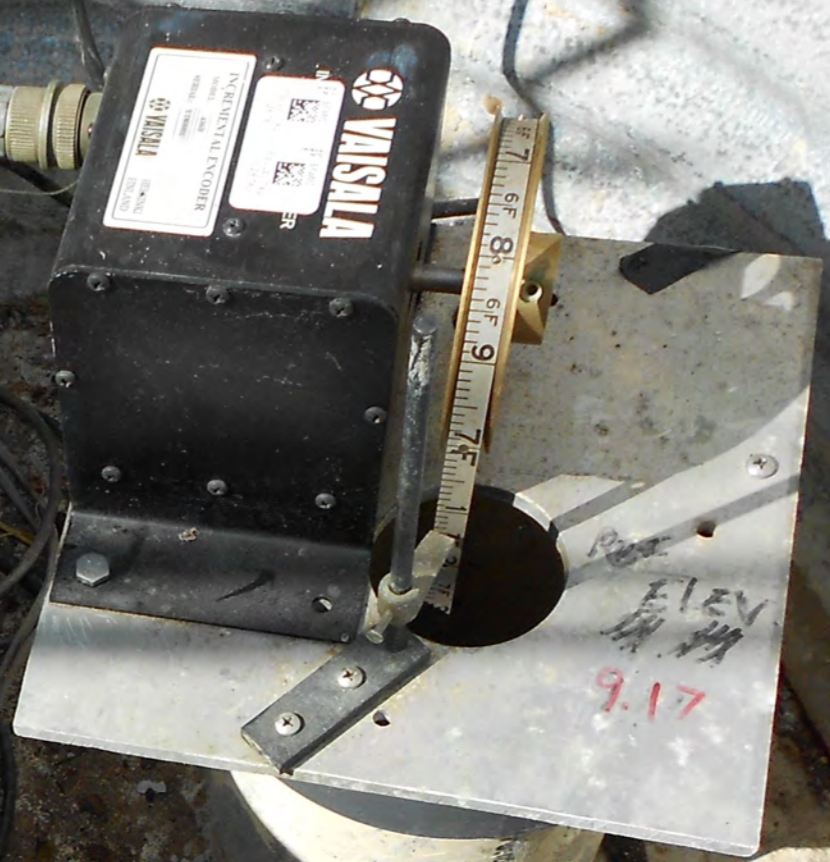
BM IS A BRASS DISC SET IN CONC GUTTER OF 88 ST.

~~855~~
865







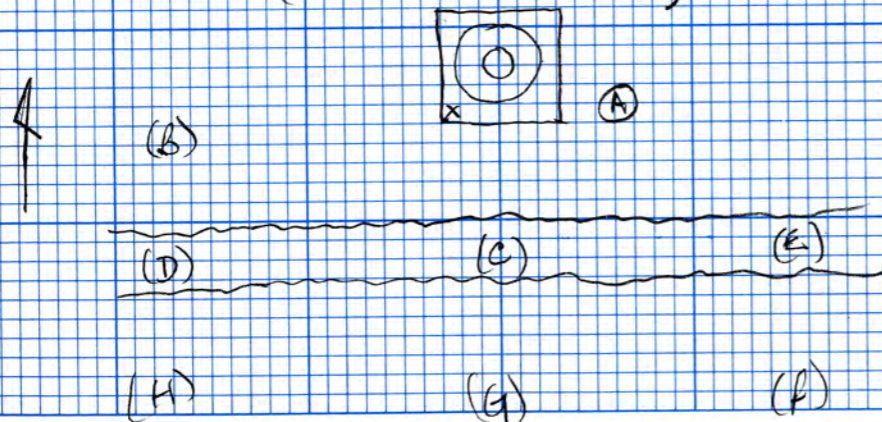






SEC. Twp Rge
 ESTABLISH GROUND ELEVATION AT AND NEAR WELL SITE ANGEL.

HTA	+	H.I.	-	Elev	Remarks
Bm ANGEL-1	3.97	11.46		7.39	See Cor. well PAD.
Well Ref Pt.	25 37 23.3 80 32 32.7		2.19	9.17	(9.17)
GD (A)	v		4.30	7.06	
GD (B)	80 32 33.0		4.81	6.55	
GD (C)	25 37 23.1 80 32 32.7		4.30	7.06	
GD (D)	25 37 23.1 80 32 33.0		4.37	6.99	
GD (E)	80 32 32.4		4.18	7.18	
GD (F)	(25 37 22.6) (80 32 32.7)		4.98	6.38	
GD (G)			5.12	6.24	
GD (H)	(80 32 33.1)		5.03	6.33	



SEC. Twp Rge
 ESTABLISH GROUND ELEVATION AT AND NEAR WELL SITE G 3273

HTA	+	H.I.	-	Elev	Remarks
Bm G 3273-1	4.12	13.67		8.55	Find As Described.
Well Ref Pt.			3.795	9.815	(9.89)
GD (A)			6.96	6.71	
GD (B)			7.07	6.6	
GD (C)			7.64	6.03	
GD (D)			6.28	7.39	
	(C)		(A)	(B)	
	25 37 41.6 80 34 33.6		25 37 41.9 80 34 33.7		25 37 42.3 80 34 33.7

