



# RMBAKER LLC

WELL: **BBCW4**  
LOG STAGE: **EXPLORATORY**

Geology and Geophysics

8600 Oldbridge Lane  
Orlando, FL 32819  
mobile ph 407-733-8958  
fax 407-370-4129

**LOGS PROVIDED:**  
NATURAL GAMMA  
INDUCTION RESISTIVITIES

**rob@rmbaker.com**  
**www.rmbaker.com**

Licensed and Insured

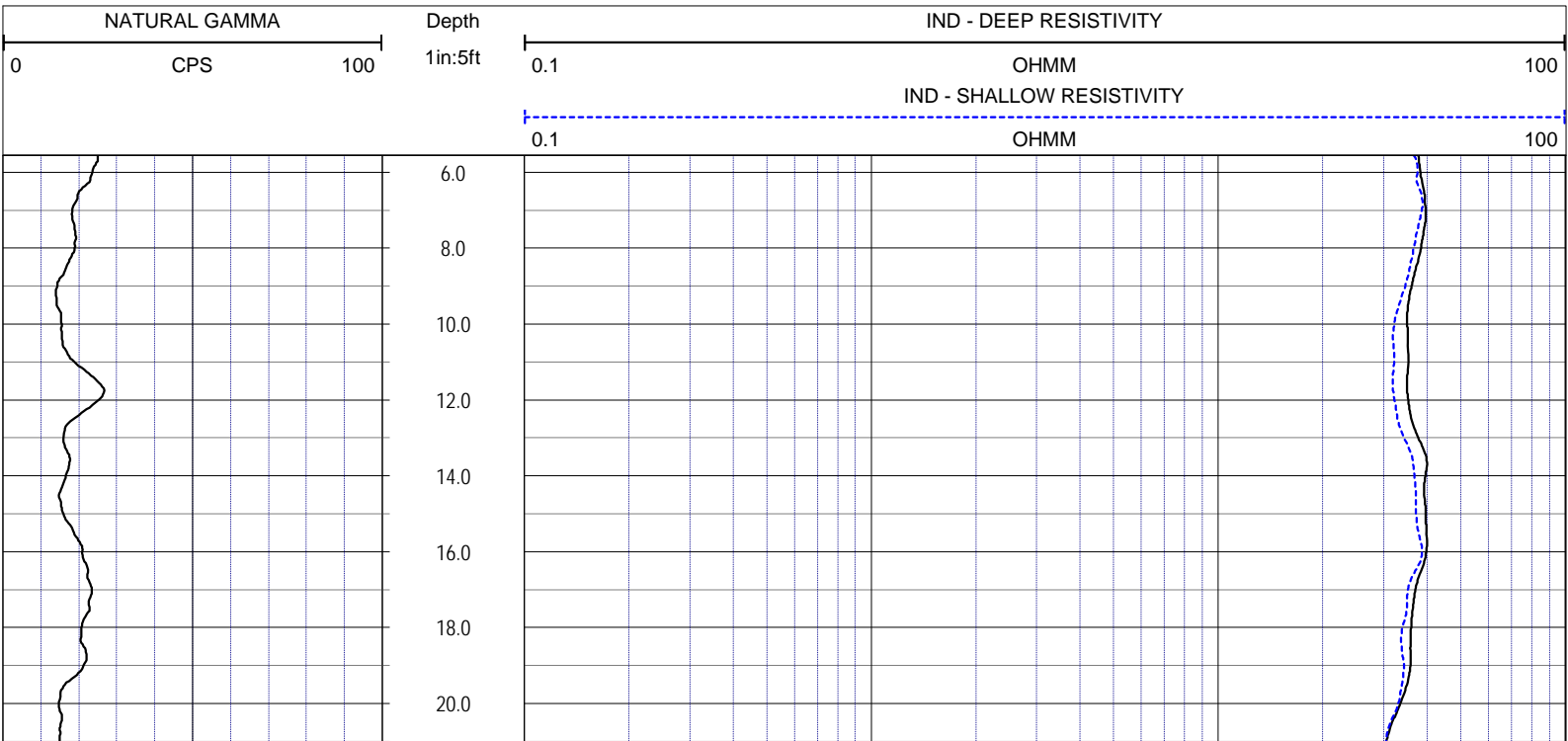
<b>SRVC</b>	<b>RMBAKER LLC</b>	<b>COMPANY:</b>	<b>RMBAKER LLC</b>
<b>UWI</b>	<b>BBCW4</b>	<b>WELL NAME:</b>	<b>BBCW4</b>
<b>FLD</b>	<b>NA</b>	<b>FIELD:</b>	
<b>PROV</b>	<b>FL</b>	<b>COUNTRY:</b>	<b>USA</b>
<b>CTY</b>	<b>MIAMI-DADE</b>	<b>STATE:</b>	<b>FL</b>
		<b>COUNTY:</b>	<b>MIAMI-DADE</b>
<b>LOC:</b>	<b>N/A</b>	<b>ALL SERVICES:</b>	<b>DUAL INDUCTION NATURAL GAMMA</b>
<b>NOTES:</b>	<b>GROUND SURFACE ASSUMED AT TOP OF CONCRETE PEDESTAL; 1.75 FT PVC STICK-UP ABOVE PEDESTAL</b>		
<b>SEC</b>	<b>TWP</b>	<b>RGE</b>	
<b>PERMANENT DATUM:</b>		<b>ELEVATION:</b>	<b>COORDINATES:</b>

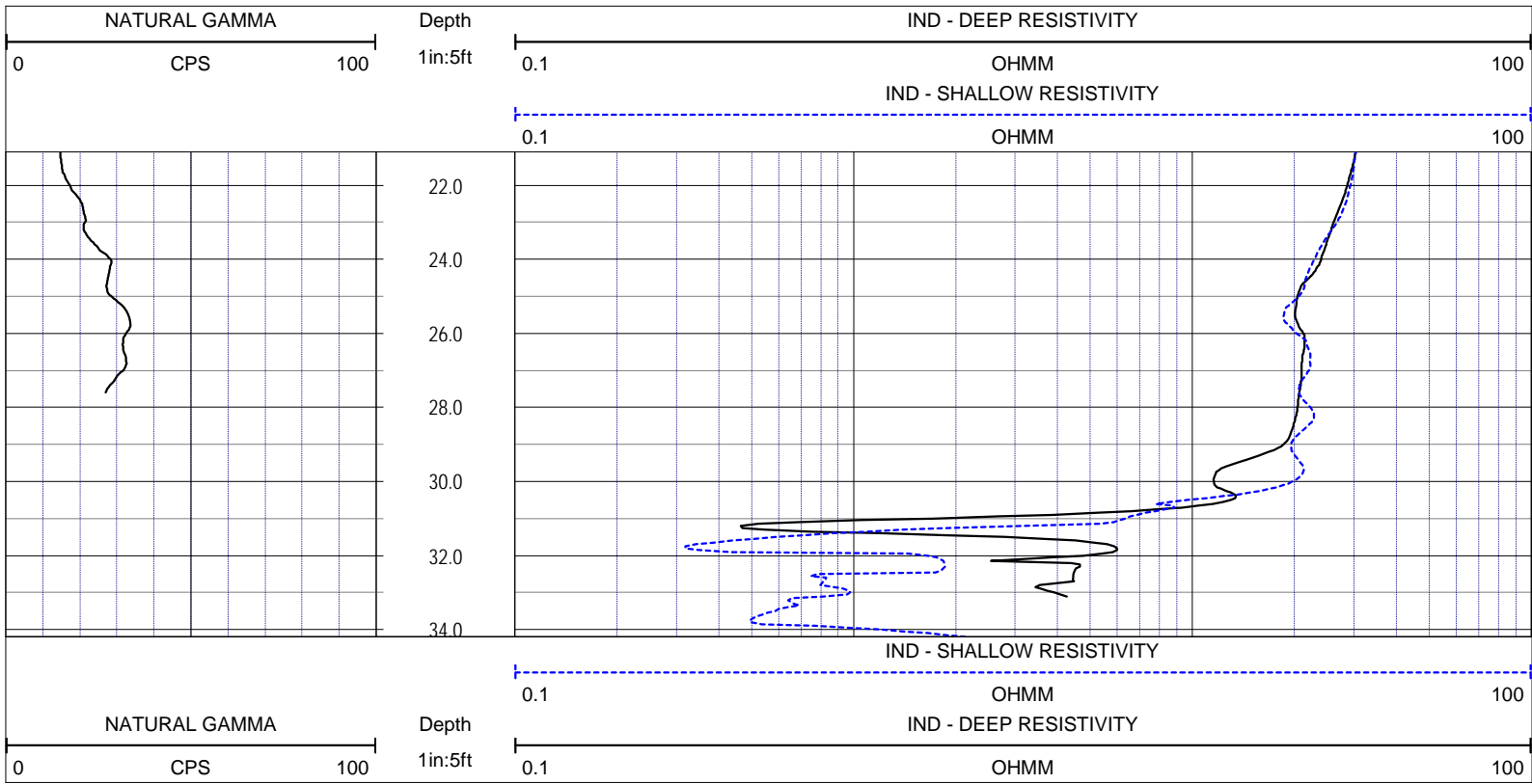
LOG MEAS. FROM: GROUND SURFACE

DRILLING MEAS. FROM:

<b>DATE</b>	19 Jun 13	<b>TYPE FLUID IN HOLE</b>	WATER
<b>RUN No</b>	1	<b>SALINITY</b>	
<b>TYPE LOG</b>	DUAL INDUCTION	<b>DENSITY</b>	
<b>DEPTH-DRILLER</b>	36.9	<b>LEVEL</b>	
<b>DEPTH-LOGGER</b>	35.7	<b>MAX. REC. TEMP.</b>	
<b>BTM LOGGED INTERVAL</b>		<b>LOGGING SPEED (FT/MIN)</b>	15
<b>TOP LOGGED INTERVAL</b>		<b>TROLLING DIRECTION</b>	UP
<b>DRILLER</b>		<b>PUMPING RATE (GPM)</b>	
<b>RECORDED BY</b>	RMBAKER LLC		
<b>WITNESSED BY</b>	JJ-SFWMD		

BOREHOLE RECORD		CASING RECORD					
RUN NO.	BIT	FROM	TO	SIZE	MAT.	FROM	TO
				2	PVC	0	35.7





**NOTES:**

While due care has been exercised in the performance of these measurements and observations, in accordance with methodologies utilized by the general practitioner, RIMBAKER LLC can make no representations, warranties, or guarantees with respect to latent or concealed conditions that may exist, which may be beyond the detection capabilities of the methodologies used, or that may extend beyond the areas and depths surveyed. The geophysical well logs show subsurface conditions as they existed at the dates and locations shown, and it is not warranted that they are representative of subsurface conditions at other locations and times. If, at any time, different subsurface conditions from those observed are determined to be present, we must be advised and allowed to review and revise our observations if necessary.

Certificate of Authorization GB 458

END OF LOG