



# RMBAKER LLC

WELL C-1079  
UWI C-1079

Geology and Geophysics

8600 Oldbridge Lane  
Orlando, FL 32819  
mobile ph 407-733-8958

PROFESSIONAL LICENSES  
Geologist PG2186  
Geology Business GR458

rob@rmbaker.com  
www.rmbaker.com

HEADER NOTES:

COMP	SFWMD	
LOC	IMMOKALEE RD	
FLD	IMMOKALEE	
CNTY	COLLIER	
STAT	FL	
PROV	FL	
CTRY	USA	
LATI	26 22 00	X
LONG	-81 28 36	Y
GDAT	WGS84	HDAT
SEC		ELEV
TWP		V DAT
RGE		

ALL SERVICES:  
WATER QUALITY

PERMANENT DATUM:  
LOG MEASURED FROM: GROUND SURFACE - 1.5 FT BELOW SURVEY REF.

DRILLING MEASURED FROM:

DATE	26 Feb 20	TYPE FLUID IN HOLE	WATER
RUN No	1	LOGGING SPEED (FT/MIN)	26
TYPE LOG	WATER QUALITY	TROLLING DIRECTION	DOWN
DEPTH-DRILLER	390	PUMPING RATE (GPM)	N/A
DEPTH-LOGGER	266.7		
DRILLER			
RECORDED BY	RMB		
SRVC	RMBAKER LLC	API	N/A
WITNESSED BY	SFWMD	LIC	N/A

BOREHOLE RECORD					
RUN NO.	BIT	FROM	TO	CASING RECORD	
	3.875	298	390	SIZE	MAT.
				4	PVC
				FROM	TO
					298

PROJECT NOTES:  
Monitoring reference elevation was 1.5 foot above ground surface.

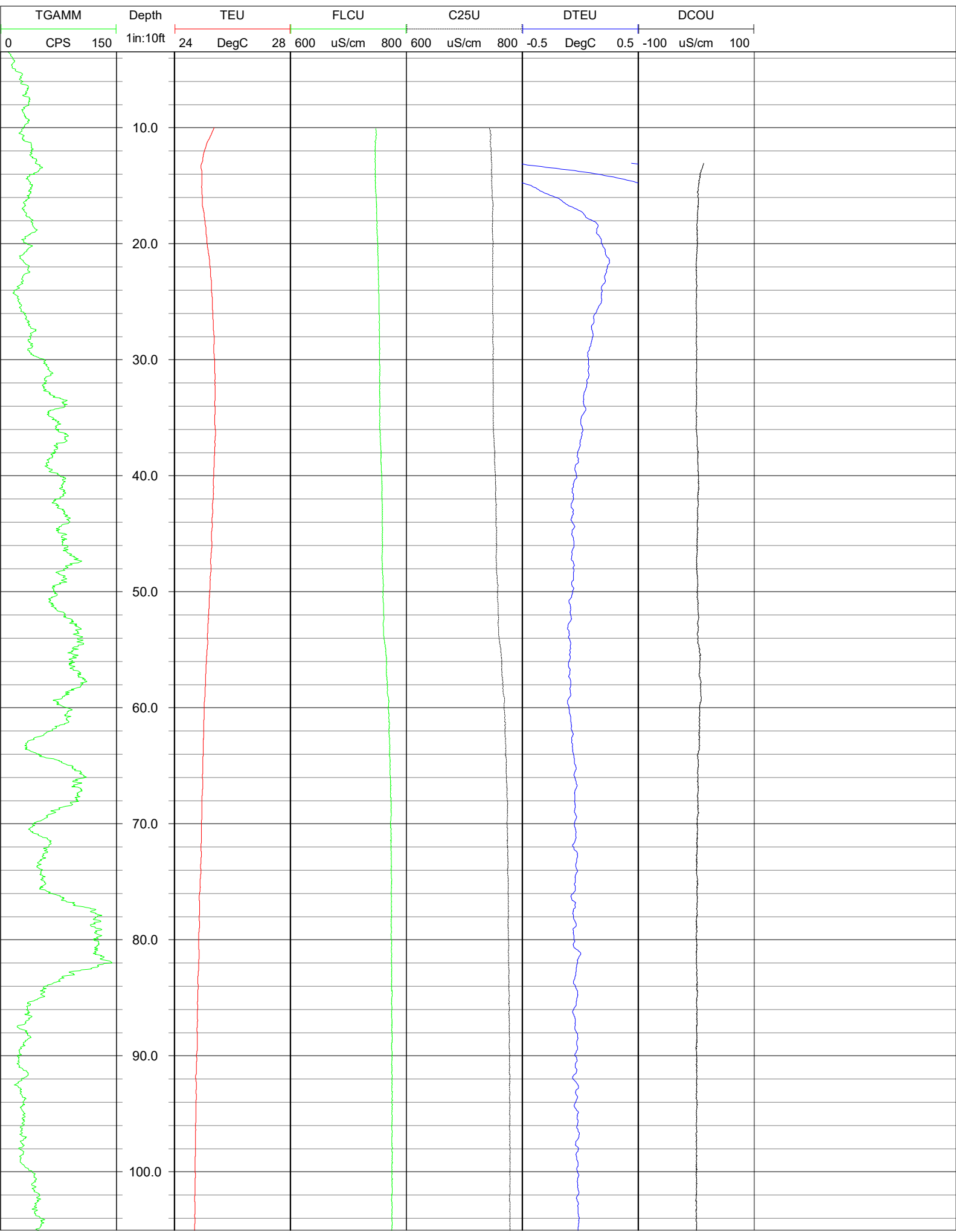
Casing was obstructed at 266.7 feet. Contact was hard. Possible scale buildup with dropped monitoring equipment. Video camera could not advance past 245 feet due to scale.

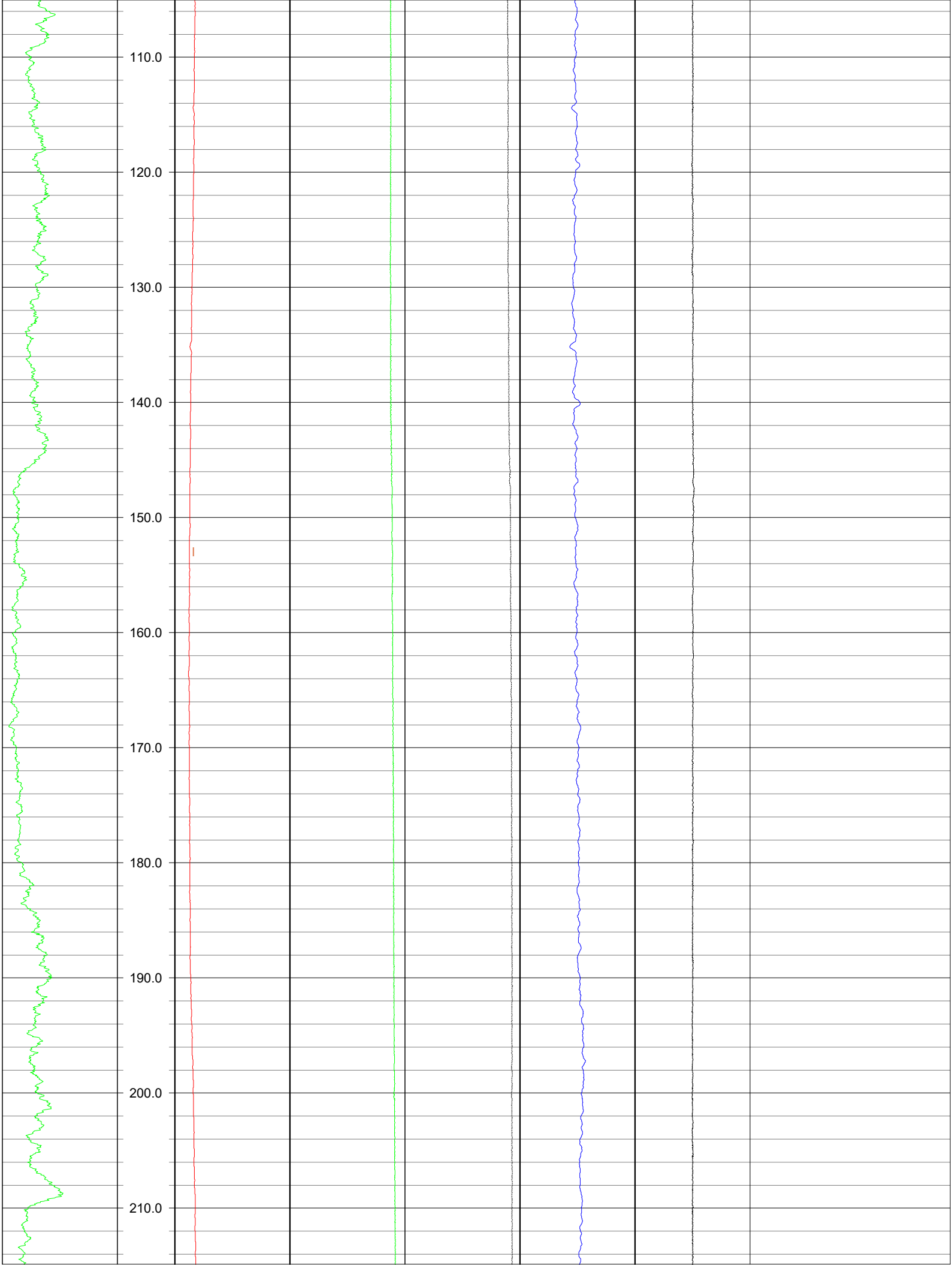
## LOG CODES

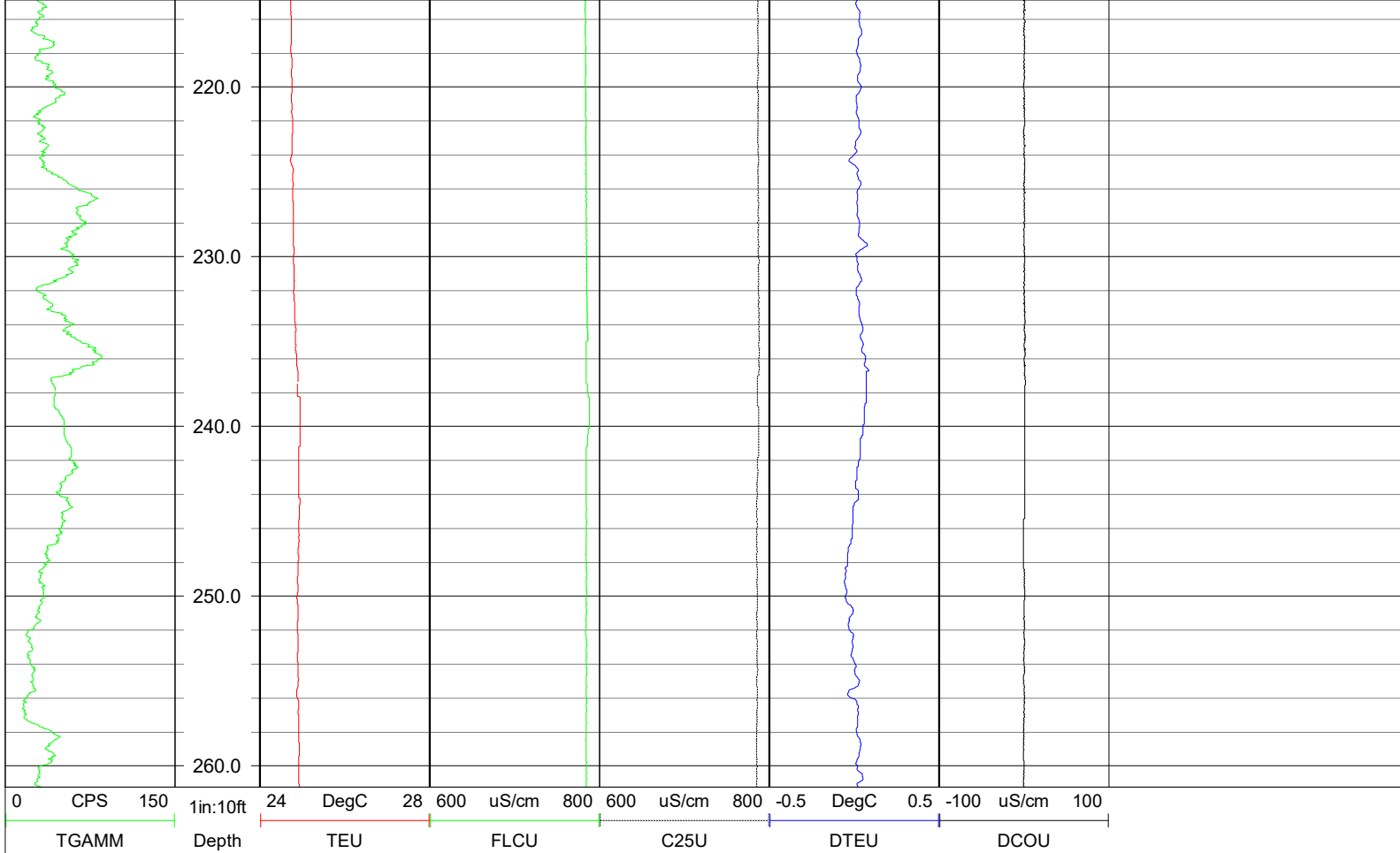
3-arm caliper	<b>CAL</b>	long normal resistivity	<b>RLN</b>	deep induction conductivity	<b>IDC</b>
natural gamma (CPS)	<b>GAMM</b>	8 inch resistivity	<b>R8</b>	shallow induction conductivity	<b>ISC</b>
spontaneous potential	<b>ESP</b>	32 inch resistivity	<b>R32</b>	sonic interval velocity	<b>DT</b>
single point resistance	<b>RES</b>	deep induction resistivity	<b>ILD</b>	sonic porosity (RHG method)	<b>SPHI</b>
short normal resistivity	<b>RSN</b>	shallow induction resistivity	<b>ILM</b>	repeat designation	<b>R</b>

## WATER QUALITY LOG CODES

static fluid temperature	<b>TEU</b>	dynamic fluid conductivity	<b>FLCP</b>	caliper	<b>CAL</b>
dynamic fluid temperature	<b>TEP</b>	static differential cond.	<b>DCOU</b>	repeat designation	<b>R</b>
static differential temperature	<b>DTEU</b>	dynamic differential cond.	<b>DCOP</b>	natural gamma	<b>GAMM</b>
dynamic differential temp.	<b>DTEP</b>	static specific conductance	<b>C25U</b>	calibration correction	<b>C</b>







**NOTES:**

While due care has been exercised in the performance of these measurements and observations, in accordance with methodologies utilized by the general practitioner, RMLBAKER LLC can make no representations, warranties, or guarantees with respect to latent or concealed conditions that may exist, which may be beyond the detection capabilities of the methodologies used, or that may extend beyond the areas and depths surveyed.

The geophysical well logs show subsurface conditions as they existed at the dates and locations shown, and it is not warranted that they are representative of subsurface conditions at other locations and times. If, at any time, different subsurface conditions from those observed are determined to be present, we must be advised and allowed to review and revise our observations if necessary.

Florida Licensed Geology Business GB 458

**END OF LOG**