

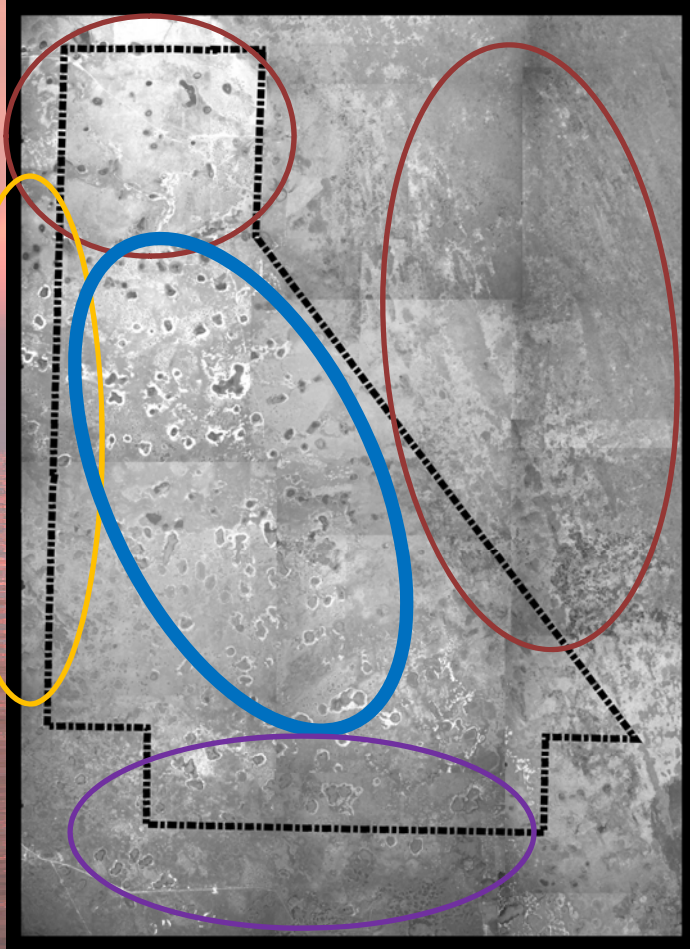
C-139 Annex Restoration Potential



Ernie Barnett, Director Everglades Policy and Coordination



Historic Site Conditions



1953

Interior:

wet prairie with depression marshes,
and a couple tree islands

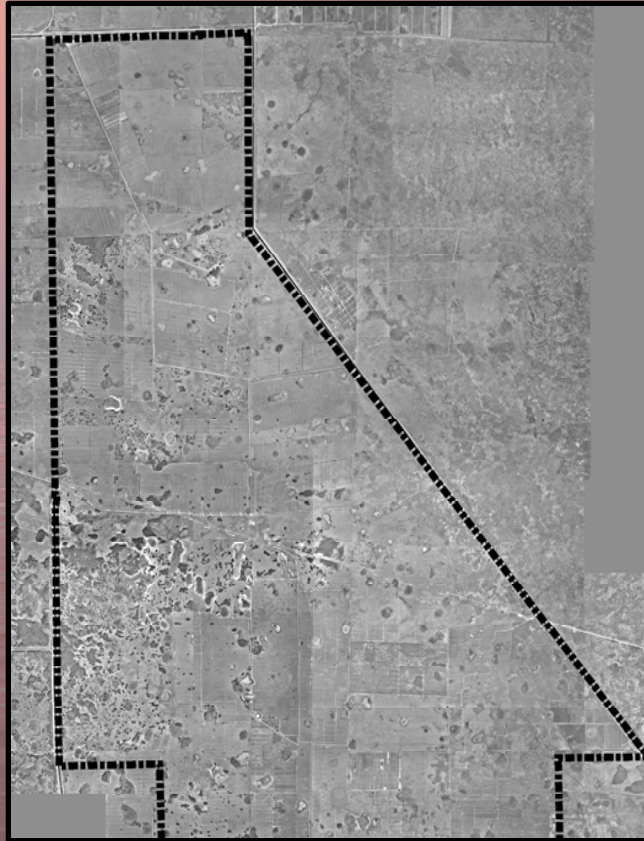
- Dry prairie, north
- Wet flatwood, west
- Everglades mosaic, east
- Cypress swamp, south

1968-83, Sod and Cattle

1968

1974

1982



Current Condition

Citrus: 10,733 acres



Current Condition

Ponds: Six impoundments within restoration area



Current Condition

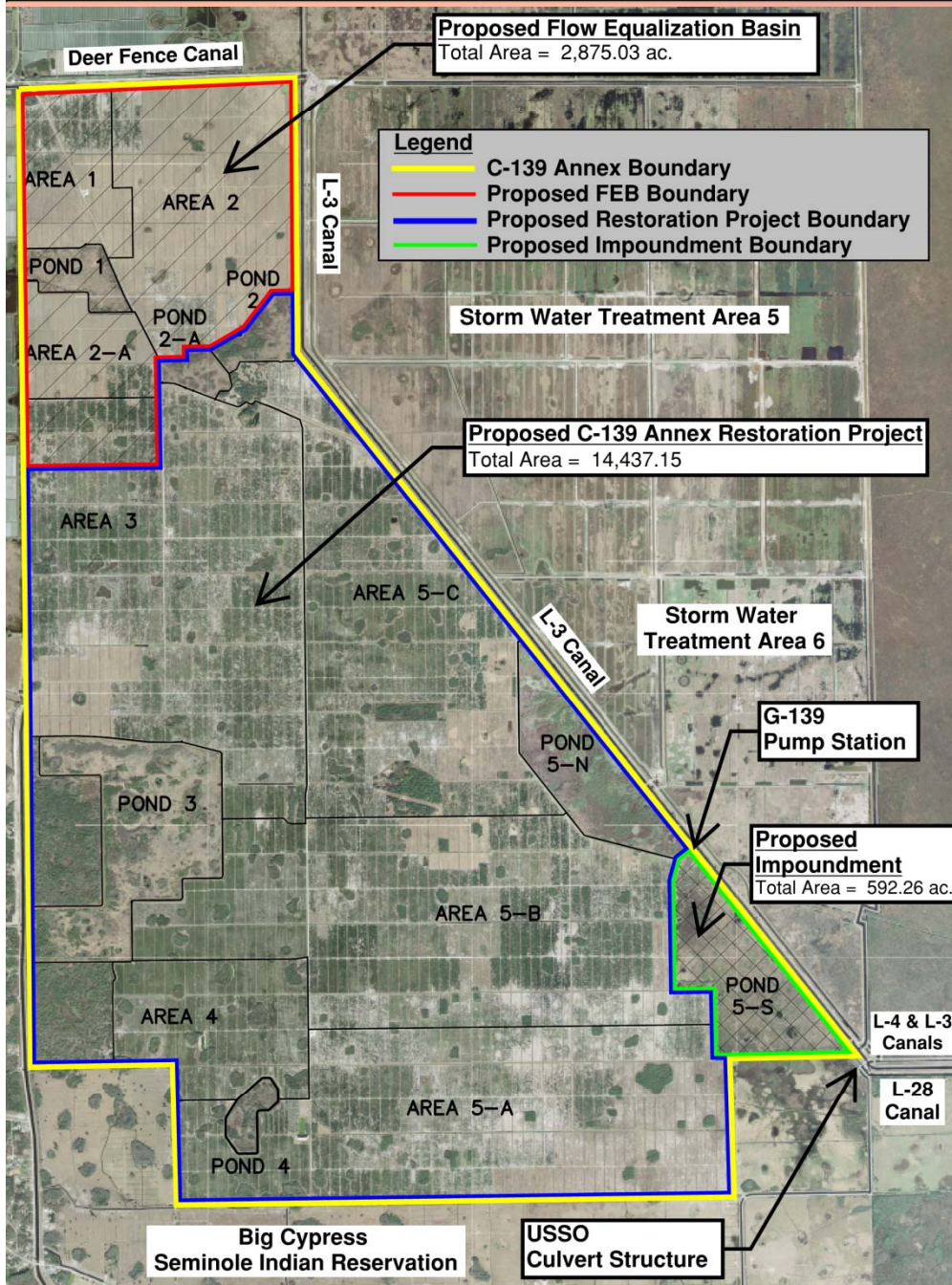
Former Depression Marsh: drained and covered with exotic plants



Current Condition

Mesic Flatwood: overgrown and fire-suppressed





Project Summary

Restoration Component

- Area = 14,437 acres
- Remove buildings, tanks, solid waste & abandon wells
- Remove exotic & nuisance vegetation
- Clear citrus trees & level planting beds
- Remove irrigation system
- Backfill canals & degrade roads & levees to restore sheetflow
- Microtopography & replanting

Future Condition

Preliminary Analysis:

- Lift → 9,000 – 11,000 credits
- Cost → \$9,000 – \$11,000

