



SOUTH FLORIDA WATER MANAGEMENT DISTRICT

Rev. 1/16

SCADA RTU Station Name: C43207A C43207B	DB Hydro Station Name: C43207G1 C43207G2	DB Hydro Site Name: C43207	Agency: S.F.W.M.D	Date of Field Work: 5/07/2019
Party Chief: EBANKS	Field Book: SCADA FB# 13	Page(s): 30		Prepared by: E. Ebanks

SITE SPECIFIC DATA

Site Benchmark(s): PZ207A C43RES2	Benchmark Elevation(s) (NAVD88) 28.28feet 27.82feet	Corpscon 6.0.1 Conversion Factor (NAVD88 to NGVD29) +1.28 feet
Reference Elevation(s) (NAVD88): C43207A = 31.98 feet C43207B = 31.92 feet		Calibration Port Elevation(s) (NAVD88): N/A
Ground Elevation (NAVD88): 28.5 feet		Pad Elevation (NAVD88): A= 28.66 feet, B= 28.67 feet

GEOGRAPHIC DATA

Section 31	Township 43 South	Range 29 East
Well(s) Gate(s) Benchmark(s)	Latitude: C43207A 26°41'20.9" C43207B 26°41'20.8" State Plane Coordinates	Longitude: C43207A - 81°27'48.1" C43207B - 81°27'48.1" Northing (Y) = N/A
		Source: Scaled pick point aerial esri product Easting (X) = N/A

Notes: **NAVD88** – North American Vertical Datum of 1988; **NGVD29**- National Geodetic Vertical Datum of 1929; **Corpscon 6.0.1** - A U.S. Army Corps of Engineers Engineering Research and Development Center Topographic Engineering Center Alexandria, Virginia Windows-based program to convert coordinates and elevations between datum's using vertcon05.txt and vertcon05.05 files supplied by the U.S. Army Corps of Engineers South Atlantic Division, Jacksonville FL.

PICTURES

C43207A
Latitude: **26°41'20.9"**
Longitude: **- 81°27'48.1"**

C43207B
Latitude: **26°41'20.8"**
Longitude: **- 81°27'48.1"**

Aerial of Overall Site
Not to scale (esri product)

Benchmark **"C43RES2"**
Latitude: **26°41'20.9"**
Longitude: **- 81°27'48.0"**
El. **31.92 feet NAVD88**

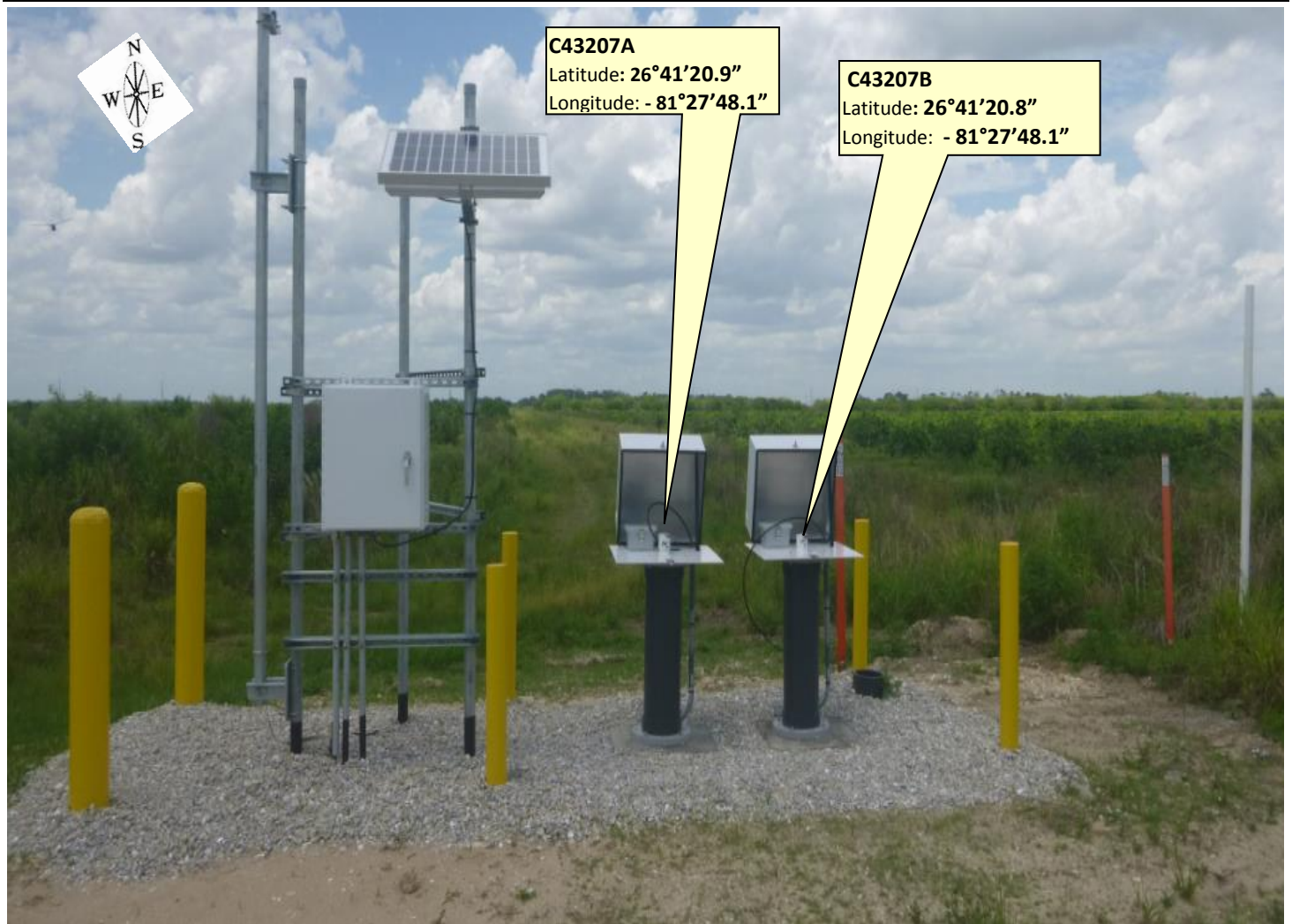
Benchmark **"PZ207"**
Latitude: **26°41'20.8"**
Longitude: **- 81°27'48.0"**
El. **31.98 feet NAVD88**



SOUTH FLORIDA WATER MANAGEMENT DISTRICT

Rev. 1/16

C43207 Piezometer Well Site

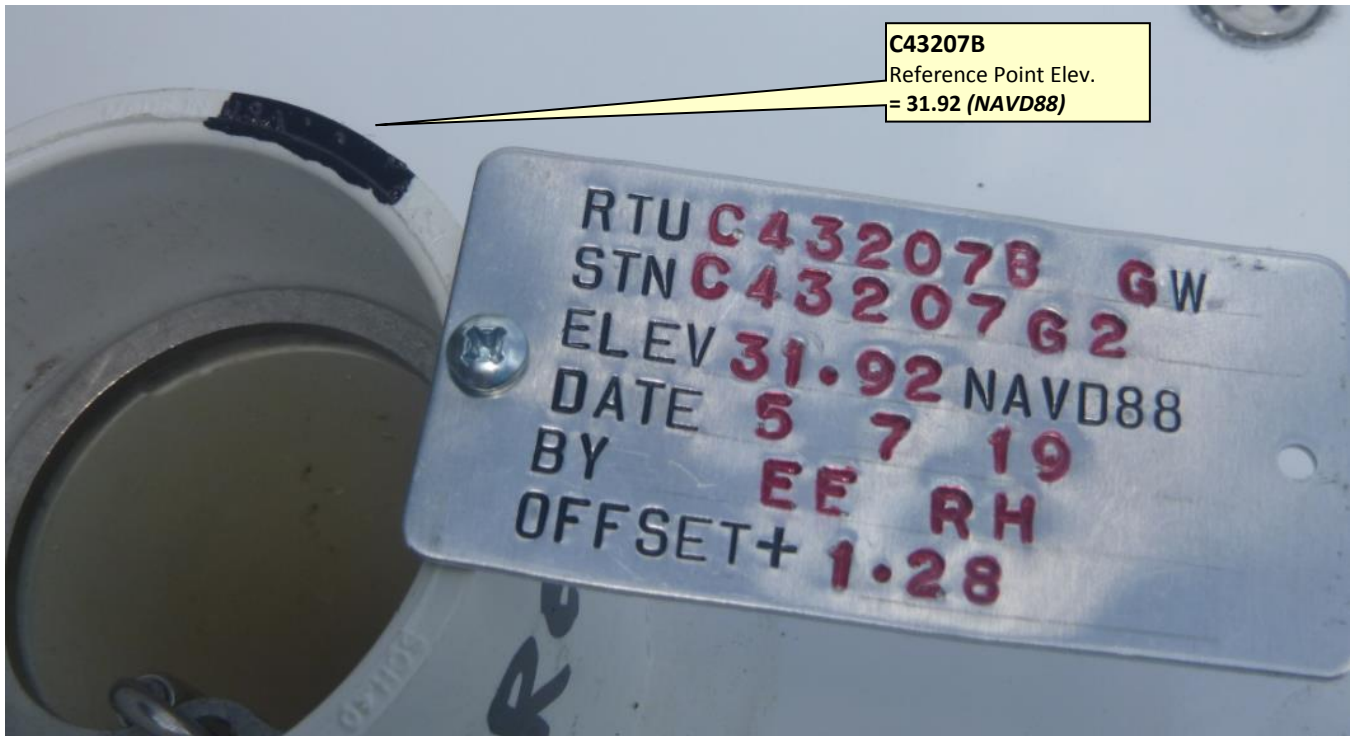




SOUTH FLORIDA WATER MANAGEMENT DISTRICT

Rev. 1/16

C43207 Piezometer Wells

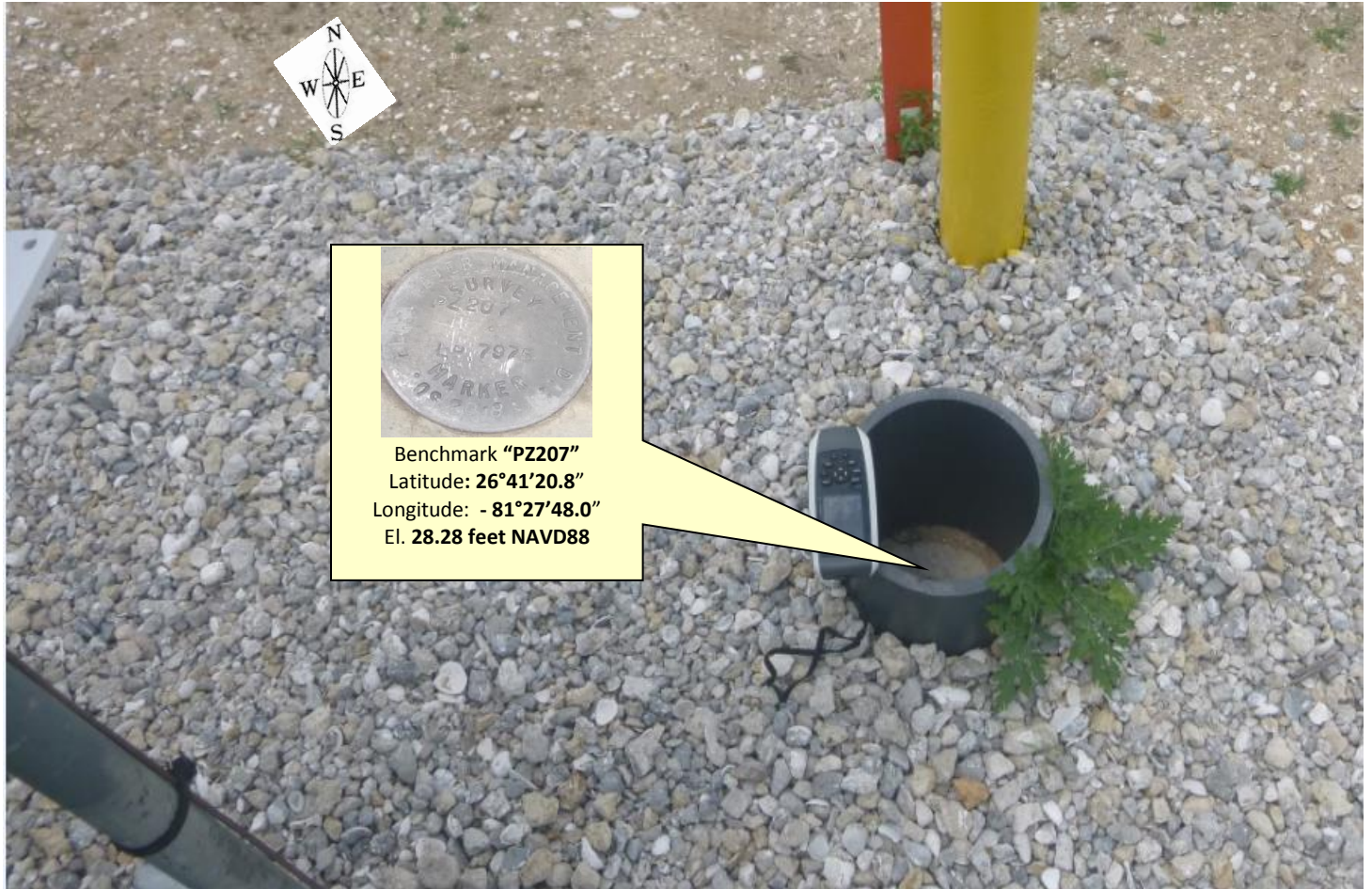




SOUTH FLORIDA WATER MANAGEMENT DISTRICT

Rev. 1/16

"P2207" Benchmark Location Benchmark: El. 28.28 feet (NAVD88)





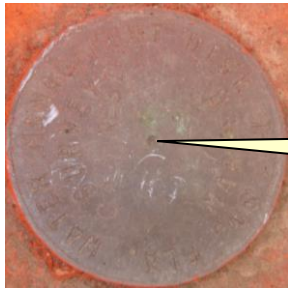
SOUTH FLORIDA WATER MANAGEMENT DISTRICT

Rev. 1/16

"C43RES2" Benchmark Location Benchmark: El. 27.82 feet (NAVD88)



Benchmark "C43RES2"
Latitude: 26°41'20.9"
Longitude: -81°27'48.0"
El. 27.82 feet NAVD88



Benchmark "C43RES2"
Latitude: 26°41'20.9"
Longitude: - 81°27'48.0"
El. 27.82feet NAVD88



SOUTH FLORIDA WATER MANAGEMENT DISTRICT

Rev. 1/16

"PZ207" Benchmark Datasheet (1 of 1)



SOUTH FLORIDA WATER MANAGEMENT DISTRICT

Rev. 8/07

DESIGNATION: PZ 207		PROJECT: C-43 VERTICAL CONTROL SURVEY FOR PIEZOMETER WELLS	
ESTABLISHED BY: J. HAYWOOD		SURVEYOR: SCOTT URQUHART	
RECOVERED BY		DATE: MARCH 1, 2018	
GEOGRAPHIC POSITION			
SECTION: 31	TOWNSHIP: 43 SOUTH	RANGE: 29 EAST	
COUNTY: HENDRY	NAME OF QUADRANGLE: ALVA		
GEOGRAPHIC INDEX OF QUAD:			
HORIZONTAL DATUM: 1927 (1983) Other _____ (circle one) ZONE (E) or W			
VERTICAL DATUM: MSL 1929 (1988) Other N/A (circle one)			
CONTROL ACCURACY: HORIZONTAL 1 2 (3) _____ (circle one) VERTICAL 1 2 (3) N/A			
STATE PLANE COORDINATES	X = 504880.9	Y = 856441.9	NAVD 88 ELEV. 28.28' NGVD 29 ELEV. 29.55'
LATITUDE = N26° 41' 20.83"		LONGITUDE = W81° 27' 48.02"	
RECOVERY DESCRIPTION			
Stamping: POURED IN PLACE CONCRETE MONUMENT WITH ALUMINIUM DISK SO. FLA. WATER MANAGEMENT DIST. "PZ 207 LB 7975 2018"			
To Reach: To reach the station from the intersection of S.R. 80 and West Cowboy Way, Go along S.R. 80 southwest for 3.9 miles to Congen Rd. on the left. Go along Congen Rd. South 0.14 miles to gate (SFWMD Lock) continue South 0.4 miles to the intersection of an East-West dirt road. Thence go East along dirt road 1.2 miles to the junction of a dirt road running South. Go South 1.3 miles to the junction of a dirt road running East. Thence go East, crossing a bridge, for 0.9 miles. The mark is on the left.			
Notable Land marks: PZ 207, is a poured in place concrete monument with an aluminum disk that is 25.4 feet northwest of a gate post on the North side of the East – West running road, 16 feet North of the center line of the East - West running road, and 8 feet East of the northwest bollard around the wells.			
FIELD BOOK: 510		PAGE: 34	



"C43RES2" Benchmark Datasheet (1 of 2)

The NGS Data Sheet

See file [dsdata.pdf](#) for more information about the datasheet.

```

PROGRAM = datasheet95, VERSION = 8.12.4.1
1      National Geodetic Survey, Retrieval Date = MAY 17, 2018
DQ7940 *****
DQ7940 DESIGNATION - C 43 RES 2
DQ7940 PID - DQ7940
DQ7940 STATE/COUNTY- FL/HENDRY
DQ7940 COUNTRY - US
DQ7940 USGS QUAD - SEARS (1973)
DQ7940
DQ7940 *CURRENT SURVEY CONTROL
DQ7940
DQ7940* NAD 83(1986) POSITION- 26 41 20.85 (N) 081 27 47.90 (W) HD HELD1
DQ7940* NAVD 88 ORTHO HEIGHT - 8.479 (meters) 27.82 (feet) ADJUSTED
DQ7940
DQ7940 GEOID HEIGHT - -24.473 (meters) GEOID12B
DQ7940 DYNAMIC HEIGHT - 8.466 (meters) 27.78 (feet) COMP
DQ7940 MODELED GRAVITY - 979,083.2 (mgal) NAVD 88
DQ7940
DQ7940 VERT ORDER - SECOND CLASS I
DQ7940
DQ7940.The horizontal coordinates were determined by differentially corrected
DQ7940.hand held GPS observations or other comparable positioning techniques
DQ7940.and have an estimated accuracy of +/- 3 meters.
DQ7940.
DQ7940.The orthometric height was determined by differential leveling and
DQ7940.adjusted by the NATIONAL GEODETIC SURVEY
DQ7940.in May 2018.
DQ7940
DQ7940.Significant digits in the geoid height do not necessarily reflect accuracy.
DQ7940.GEOID12B height accuracy estimate available here.
DQ7940
DQ7940.The dynamic height is computed by dividing the NAVD 88
DQ7940.geopotential number by the normal gravity value computed on the
DQ7940.Geodetic Reference System of 1980 (GRS 80) ellipsoid at 45
DQ7940.degrees latitude (g = 980.6199 gals.).
DQ7940
DQ7940.The modeled gravity was interpolated from observed gravity values.
DQ7940
DQ7940; North East Units Estimated Accuracy
DQ7940;SPC FL E - 261,044.5 153,891.3 MT (+/- 3 meters HHI GPS)
DQ7940
DQ7940_U.S. NATIONAL GRID SPATIAL ADDRESS: 17RMK5390752087(NAD 83)
DQ7940
DQ7940 SUPERSEDED SURVEY CONTROL
DQ7940
DQ7940.No superseded survey control is available for this station.
DQ7940
DQ7940_MARKER: DD = SURVEY DISK
DQ7940_SETTING: 7 = SET IN TOP OF CONCRETE MONUMENT
DQ7940_STAMPING: C 43 RES 2 2018
DQ7940_MARK LOGO: CARDNO

```



SOUTH FLORIDA WATER MANAGEMENT DISTRICT

Rev. 1/16

"C43RES2" Benchmark Datasheet (2 of 2)

DQ7940_PROJECTION: PROJECTING 5 CENTIMETERS
DQ7940_MAGNETIC: N = NO MAGNETIC MATERIAL
DQ7940_STABILITY: C = MAY HOLD, BUT OF TYPE COMMONLY SUBJECT TO
DQ7940+STABILITY: SURFACE MOTION
DQ7940_SATELLITE: THE SITE LOCATION WAS REPORTED AS SUITABLE FOR
DQ7940+SATELLITE: SATELLITE OBSERVATIONS - February 23, 2018

DQ7940	HISTORY	- Date	Condition	Report By
DQ7940	HISTORY	- 20180228	MONUMENTED	CARDNO

DQ7940
DQ7940 STATION DESCRIPTION
DQ7940

DQ7940'DESCRIBED BY CARDNO INC 2018 (SU)
DQ7940'THE MARK IS LOCATED ABOUT 9.3 MI (15.0 KM) EAST OF ALVA, 6.2 MI (10.0
DQ7940'KM) WEST-NORTHWEST OF SEARS AND 5.2 MI (8.4 KM) SOUTH-SOUTHWEST OF LA
DQ7940'BELLE.

DQ7940'
DQ7940'TO REACH THE STATION FROM THE JUNCTION OF STATE ROAD 80, FORT DENAUD
DQ7940'ROAD AND WEST COWBOY WAY, GO SOUTHWEST ALONG STATE ROAD 80 3.9 MI (6.3
DQ7940'KM) TO THE JUNCTION OF CONGEN ROAD ON THE LEFT (SOUTH). TURN LEFT
DQ7940'(SOUTH) ALONG CONGEN ROAD 0.14 MI (0.23 KM) TO A GATE (SFWMD LOCK)
DQ7940'CONTINUE THROUGH GATE AND SOUTH 0.4 MI (0.6 KM) TO THE JUNCTION OF AN
DQ7940'EAST-WEST DIRT ROAD, THENCE GO EAST ALONG DIRT ROAD 1.2 MI (1.9 KM) TO
DQ7940'THE JUNCTION OF A DIRT ROAD RUNNING SOUTHEAST, GO SOUTHEAST 1.3 MI
DQ7940'(2.1 KM) TO THE JUNCTION OF A DIRT ROAD RUNNING EAST ON THE LEFT,
DQ7940'THENCE TURN LEFT (EAST), CROSSING A BRIDGE, FOR 0.9 MI (1.4 KM) ALONG
DQ7940'FIELD ROAD TO THE MARK ON THE LEFT.

DQ7940'
DQ7940'THE STATION IS LOCATED 19 FT (5.8 M) NORTH OF THE CENTER OF A FIELD
DQ7940'DIRT ROAD, 18 FT (5.5 M) NORTHWEST OF AN 8 INCH (0.24 M) GATE POST, 10
DQ7940'FT (3.0 M) EAST OF THE NORTHEAST BOLLARD AROUND MONITORING WELLS P2
DQ7940'207 AND 1.5 FT (0.5 M) SOUTH OF A CARSONITE POST.

*** retrieval complete.
Elapsed Time = 00:00:04



SOUTH FLORIDA WATER MANAGEMENT DISTRICT

Rev. 1/16

"PZ207" Field Notes

SCADA		FB#13	5-7-19	30'
Loc. 31		trip 43	Rpt 29	Hbanks
Establish REF.		Elev. for walls @ City Hudson		
Well PZ 207				
HTA	+	H.I.	-	Elev Remarks
BMPZ207	5.34	33.62		28.28
GW1-A			1.64	31.98 ✓
GW2-B			1.695	31.925 ✓
GW1-PAD			4.96	28.66
GW2-PAD			4.95	28.67
Ground E			5.1	28.52
Ground N			6.8	*26.82 28.5
Ground W			5.1	28.52
Ground S			5.1	28.52
Bm C43 RES2			5.79	27.83 [27.82]
		Pt.		
Bm C43 RES2	5.83	33.65		27.82
GW2-B			1.735	31.915
GW1-A			1.68	31.97
BMPZ207			5.38	28.27 (28.28)