



SOUTH FLORIDA WATER MANAGEMENT DISTRICT

Rev. 1/16

SCADA RTU Station Name: C43208A C43208B	DB Hydro Station Name: C43208G1 C43208G2	DB Hydro Site Name: C43208	Agency: S.F.W.M.D	Date of Field Work: 5/08/2019
Party Chief: EBANKS	Field Book: SCADA FB# 13	Page(s): 31	Prepared by: E. Ebanks	

SITE SPECIFIC DATA

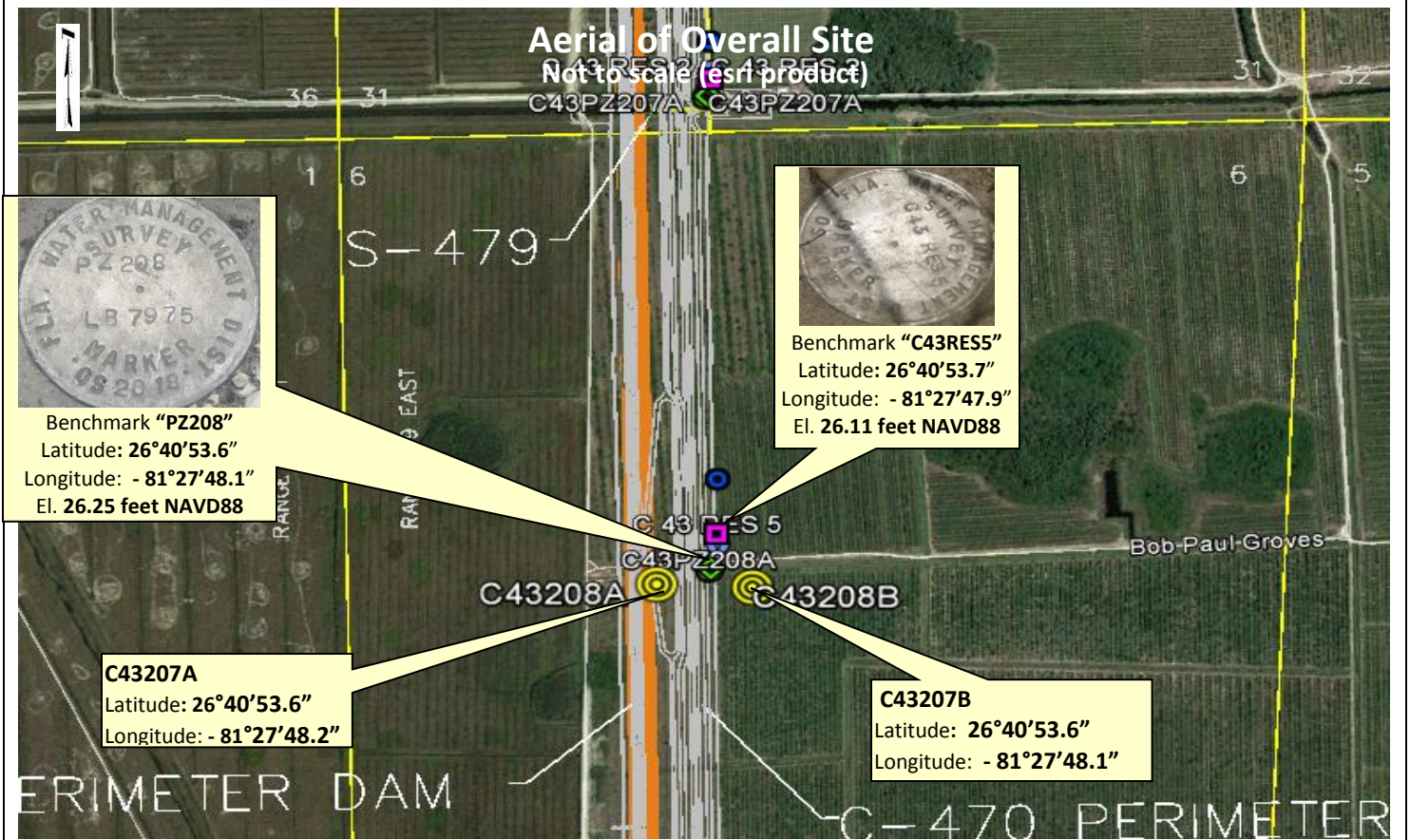
Site Benchmark(s): PZ208 C43RES5	Benchmark Elevation(s) (NAVD88) 26.25feet 26.11feet	Corpscon 6.0.1 Conversion Factor (NAVD88 to NGVD29) +1.28 feet
Reference Elevation(s) (NAVD88): C43208A = 30.09 feet C43208B = 30.05 feet	Calibration Port Elevation(s) (NAVD88): N/A	
Ground Elevation (NAVD88): 26.6feet	Pad Elevation (NAVD88): A= 26.82 feet, B= 26.80 feet	

GEOGRAPHIC DATA

Section 6	Township 44 South	Range 29 East	
Well(s) Gate(s)	Latitude: C43208A 26°40'53.6" C43208B 26°40'53.6"	Longitude: C43208A - 81°27'48.2" C43208B - 81°27'48.1"	Source: Scaled pick point aerial esri product
Benchmark(s)	State Plane Coordinates	Northing (Y) = N/A	Easting (X) = N/A

Notes: **NAVD88** – North American Vertical Datum of 1988; **NGVD29**- National Geodetic Vertical Datum of 1929; **Corpscon 6.0.1** - A U.S. Army Corps of Engineers Engineering Research and Development Center Topographic Engineering Center Alexandria, Virginia Windows-based program to convert coordinates and elevations between datum's using vertcon05.txt and vertcon05.05 files supplied by the U.S. Army Corps of Engineers South Atlantic Division, Jacksonville FL.

PICTURES





SOUTH FLORIDA WATER MANAGEMENT DISTRICT

Rev. 1/16

C43208 Piezometer Well Site

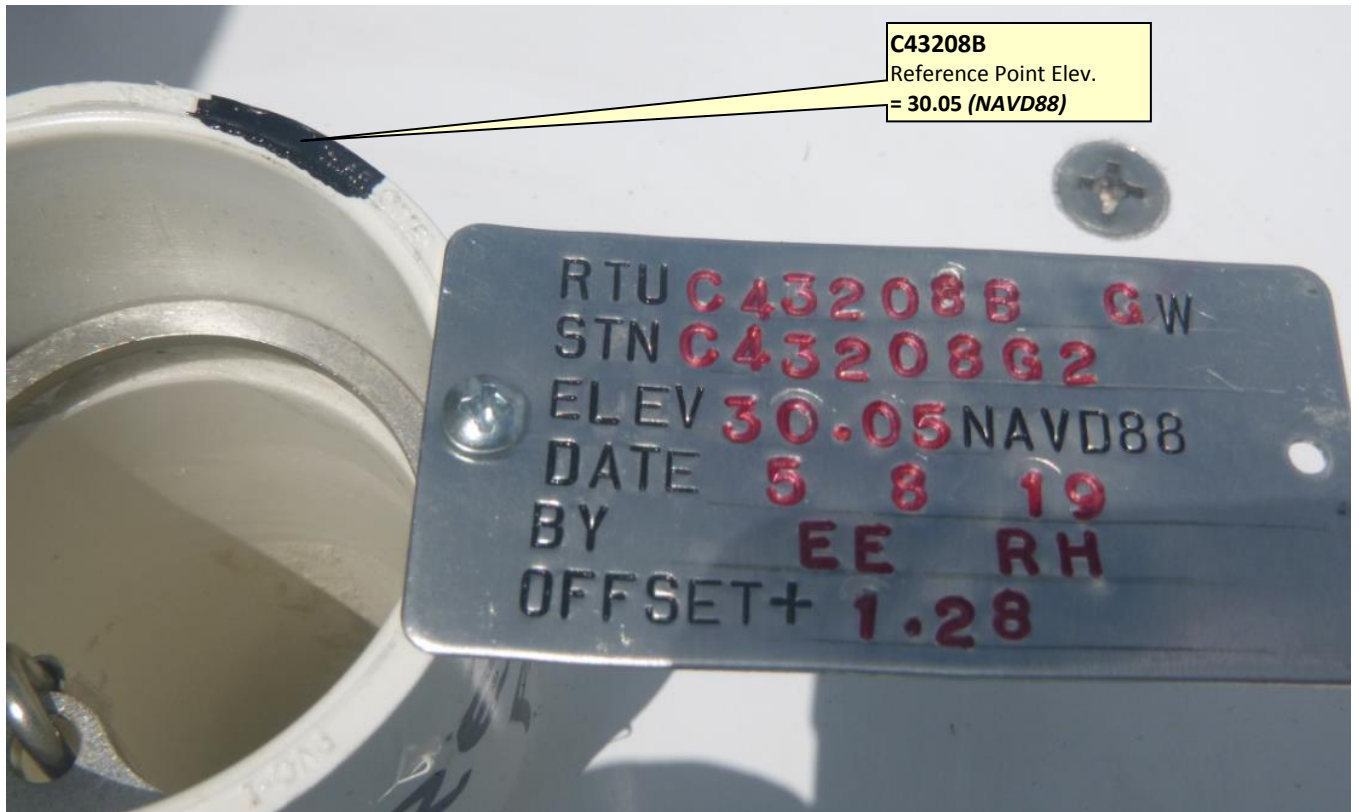
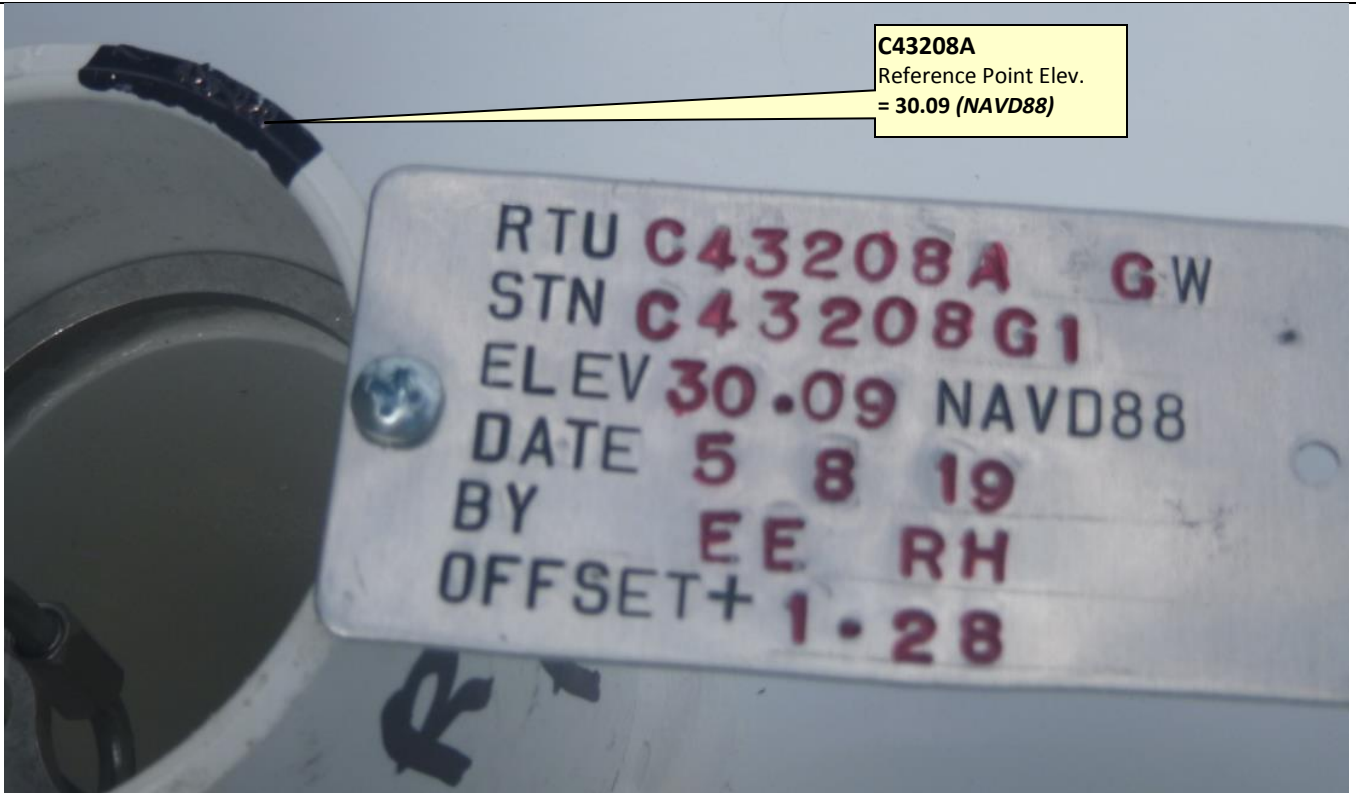




SOUTH FLORIDA WATER MANAGEMENT DISTRICT

Rev. 1/16

C43208 Piezometer Wells

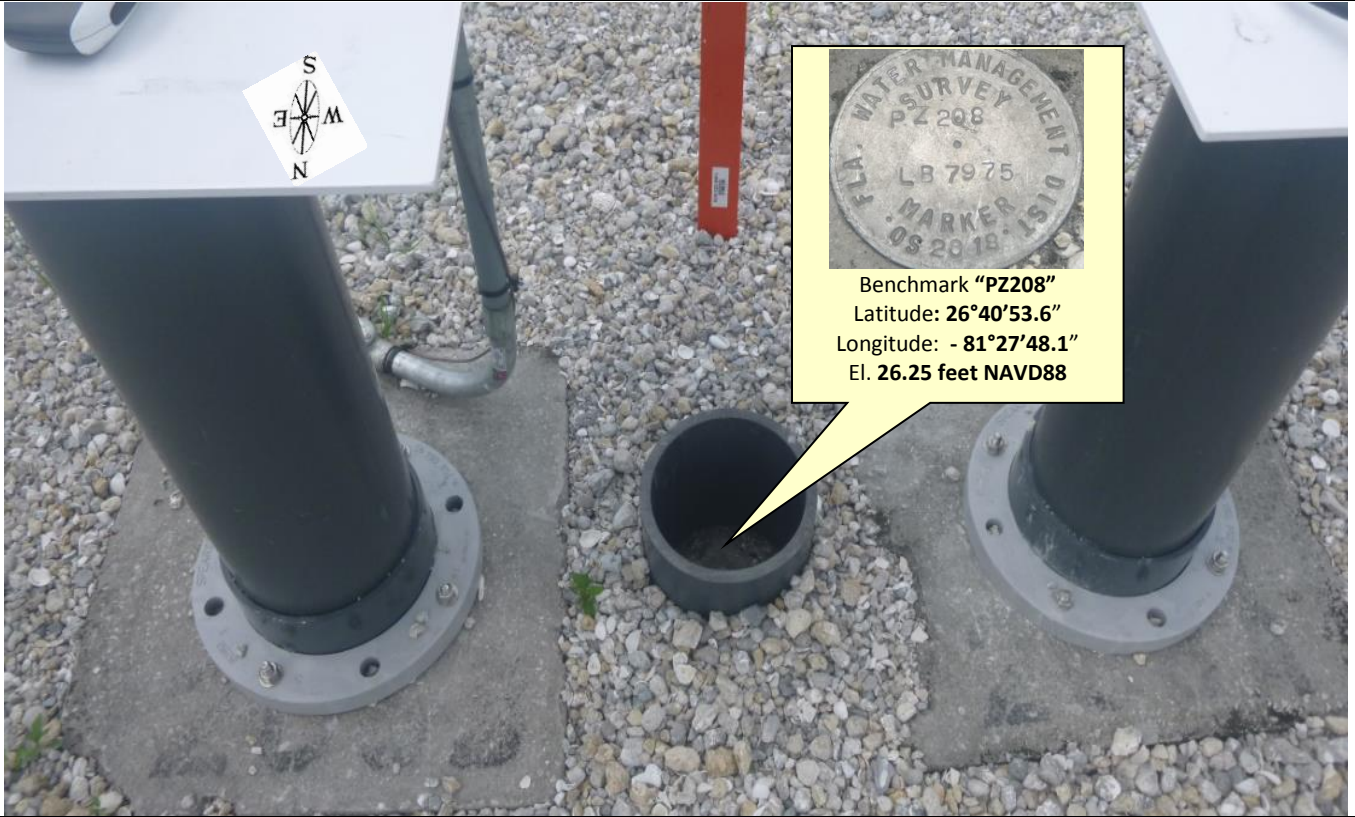




SOUTH FLORIDA WATER MANAGEMENT DISTRICT

Rev. 1/16

"PZ208" Benchmark Location Benchmark: El. 26.25 feet (NAVD88)





SOUTH FLORIDA WATER MANAGEMENT DISTRICT

Rev. 1/16

"C43RES5" Benchmark Location Benchmark: El. 26.11 feet (NAVD88)



Benchmark "C43RES5"
Latitude: **26°40'53.7"**
Longitude: **-81°27'47.9"**
El. **26.11 feet NAVD88**



Benchmark "C43RES5"
Latitude: **26°40'53.7"**
Longitude: **- 81°27'47.9"**
El. **26.11feet NAVD88**



SOUTH FLORIDA WATER MANAGEMENT DISTRICT

Rev. 1/16

"PZ208" Benchmark Datasheet (1 of 1)



SOUTH FLORIDA WATER MANAGEMENT DISTRICT

Rev. 8/07

DESIGNATION: PZ 208		PROJECT: C-43 VERTICAL CONTROL SURVEY FOR PIEZOMETER WELLS	
ESTABLISHED BY: J. HAYWOOD		SURVEYOR: SCOTT URQUHART	
RECOVERED BY		DATE: MARCH 1, 2018	
GEOGRAPHIC POSITION			
SECTION: 6	TOWNSHIP: 44 SOUTH	RANGE: 29 EAST	
COUNTY: HENDRY	NAME OF QUADRANGLE: ALVA		
GEOGRAPHIC INDEX OF QUAD:			
HORIZONTAL DATUM: 1927 (1983) Other _____ (circle one) ZONE (E) or W			
VERTICAL DATUM: MSL 1929 (1988) Other N/A (circle one)			
CONTROL ACCURACY: HORIZONTAL 1 2 (3) _____ (circle one) VERTICAL 1 2 (3) N/A			
STATE PLANE COORDINATES	X = 504857.4	Y = 853690.2	NAVD 88 ELEV. 26.25' NGVD 29 ELEV. 27.52'
LATITUDE = N26° 40' 53.58"		LONGITUDE = W81° 27' 48.17"	
RECOVERY DESCRIPTION			
Stamping: SET ALUMINIUM DISK SO. FLA. WATER MANAGEMENT DIST. "PZ 208 LB 7975 2018"			
To Reach: To reach the station from the intersection of S.R. 80 and West Cowboy Way, Go along S.R. 80 southwest for 3.9 miles to Congen Rd. on the left. Go along Congen Rd. South 0.14 miles to gate (SFWMD Lock) continue South 0.4 miles to the intersection of an East-West dirt road. Thence go East along dirt road 1.2 miles to the junction of a dirt road running South. Go South 1.3 miles to the junction of a dirt road running East. Thence go East, crossing a bridge, for 0.8 miles to the junction of a dirt road running South. Thence go South 0.5 miles to the junction of a dirt trail running East. Thence go East 0.1 miles, the mark is on the right.			
Notable Land marks: : PZ 208. is an aluminum disk set in a concrete pad that is 21 feet North of the top of bank of the East – West running canal, 6 feet southeast of the northwest bollard around the wells, 6 feet southwest of the northeast bollard around the wells.			
FIELD BOOK: 510		PAGE: 35	



"C43RES5" Benchmark Datasheet (1 of 2)

The NGS Data Sheet

See file [dsdata.pdf](#) for more information about the datasheet.

```

PROGRAM = datasheet95, VERSION = 8.12.4.1
1      National Geodetic Survey,  Retrieval Date = MAY 17, 2018
DQ7941 *****
DQ7941 DESIGNATION - C 43 RES 5
DQ7941 PID - DQ7941
DQ7941 STATE/COUNTY- FL/HENDRY
DQ7941 COUNTRY - US
DQ7941 USGS QUAD - SEARS (1973)
DQ7941
DQ7941 *CURRENT SURVEY CONTROL
DQ7941
DQ7941 NAD 83(1986) POSITION- 26 40 53.60 (N) 081 27 47.81 (W) HD HELD1
DQ7941* NAVD 88 ORTHO HEIGHT - 7.958 (meters) 26.11 (feet) ADJUSTED
DQ7941
DQ7941 GEOID HEIGHT - -24.472 (meters) GEOID12B
DQ7941 DYNAMIC HEIGHT - 7.946 (meters) 26.07 (feet) COMP
DQ7941 MODELED GRAVITY - 979,082.3 (mgal) NAVD 88
DQ7941
DQ7941 VERT ORDER - SECOND CLASS I
DQ7941
DQ7941.The horizontal coordinates were determined by differentially corrected
DQ7941.hand held GPS observations or other comparable positioning techniques
DQ7941.and have an estimated accuracy of +/- 3 meters.
DQ7941.
DQ7941.The orthometric height was determined by differential leveling and
DQ7941.adjusted by the NATIONAL GEODETTIC SURVEY
DQ7941.in May 2018.
DQ7941
DQ7941.Significant digits in the geoid height do not necessarily reflect accuracy.
DQ7941.GEOID12B height accuracy estimate available here.
DQ7941
DQ7941.The dynamic height is computed by dividing the NAVD 88
DQ7941.geopotential number by the normal gravity value computed on the
DQ7941.Geodetic Reference System of 1980 (GRS 80) ellipsoid at 45
DQ7941.degrees latitude (g = 980.6199 gals.).
DQ7941
DQ7941.The modeled gravity was interpolated from observed gravity values.
DQ7941
DQ7941; North East Units Estimated Accuracy
DQ7941;SPC FL E - 260,205.9 153,890.7 MT (+/- 3 meters HHI GPS)
DQ7941
DQ7941_U.S. NATIONAL GRID SPATIAL ADDRESS: 17RMK5390651249(NAD 83)
DQ7941
DQ7941 SUPERSEDED SURVEY CONTROL
DQ7941
DQ7941.No superseded survey control is available for this station.
DQ7941
DQ7941_MARKER: DD = SURVEY DISK
DQ7941_SETTING: 7 = SET IN TOP OF CONCRETE MONUMENT
DQ7941_STAMPING: C 43 RES 5 2018
DQ7941_MARK LOGO: CARDNO

```



SOUTH FLORIDA WATER MANAGEMENT DISTRICT

Rev. 1/16

"C43RES5" Benchmark Datasheet (2 of 2)

DQ7941_PROJECTION: RECESSED 8 CENTIMETERS
DQ7941_MAGNETIC: N = NO MAGNETIC MATERIAL
DQ7941_STABILITY: C = MAY HOLD, BUT OF TYPE COMMONLY SUBJECT TO
DQ7941+STABILITY: SURFACE MOTION
DQ7941_SATELLITE: THE SITE LOCATION WAS REPORTED AS SUITABLE FOR
DQ7941+SATELLITE: SATELLITE OBSERVATIONS - February 23, 2018

DQ7941
DQ7941 HISTORY - Date Condition Report By
DQ7941 HISTORY - 20180223 MONUMENTED CARDNO

DQ7941
DQ7941 STATION DESCRIPTION
DQ7941

DQ7941'DESCRIBED BY CARDNO INC 2018 (SU)
DQ7941'THE MARK IS LOCATED ABOUT 9.2 MI (14.8 KM) EAST-SOUTHEAST OF ALVA, 6.1
DQ7941'MI (9.8 KM) WEST-NORTHWEST OF SEARS AND 5.7 MI (9.2 KM)
DQ7941'SOUTH-SOUTHWEST OF LA BELLE.
DQ7941'
DQ7941'TO REACH THE STATION FROM THE JUNCTION OF STATE ROAD 80, FORT DENAUD
DQ7941'ROAD AND WEST COWBOY WAY, GO SOUTHWEST ALONG STATE ROAD 80 3.9 MI (6.3
DQ7941'KM) TO THE JUNCTION OF CONGEN ROAD ON THE LEFT (SOUTH). TURN LEFT
DQ7941'(SOUTH) ALONG CONGEN ROAD 0.14 MI (0.23 KM) TO A GATE (SFWMD LOCK)
DQ7941'CONTINUE THROUGH GATE AND SOUTH 0.4 MI (0.6 KM) TO THE JUNCTION OF AN
DQ7941'EAST-WEST DIRT ROAD, THENCE GO EAST ALONG DIRT ROAD 1.2 MI (1.9 KM) TO
DQ7941'THE JUNCTION OF A DIRT ROAD RUNNING SOUTHEAST, GO SOUTHEAST 1.3 MI
DQ7941'(2.1 KM) TO THE JUNCTION OF A DIRT ROAD RUNNING EAST ON THE LEFT,
DQ7941'THENCE TURN LEFT (EAST), CROSSING A BRIDGE, FOR 0.9 MI (1.3 KM) TO THE
DQ7941'JUNCTION OF A DIRT ROAD ON THE RIGHT (SOUTH), THENCE TURN RIGHT
DQ7941'(SOUTH) 0.5 MI (0.8 KM) TO THE JUNCTION OF A DIRT TRAIL ON THE LEFT
DQ7941'(EAST), THENCE TURN LEFT (EAST) 0.1 MI (0.2 KM) TO THE MARK ON THE
DQ7941'RIGHT.
DQ7941'
DQ7941'THE STATION IS LOCATED 27.90 FT (8.5 M) NORTHEAST OF THE SOUTHEAST
DQ7941'BOLLARD AROUND MONITORING WELLS PZ 208, 27.70 FT (8.4 M) SOUTHWEST OF
DQ7941'THE NORTHEAST BOLLARD AROUND MONITORING WELLS PZ 208, 16 FT (4.9 M)
DQ7941'WEST OF THE TOP OF BANK OF A DITCH RUNNING NORTH-SOUTH AND 2 FT (0.6
DQ7941'M) NORTH OF A CARSONITE POST.

*** retrieval complete.
Elapsed Time = 00:00:04



SOUTH FLORIDA WATER MANAGEMENT DISTRICT

Rev. 1/16

"PZ208" Field Notes

SCADA RB#13 5-8-19 31

Sec 6 Twp 44 Rge 29 Ebanks Hudson

Establish REF. Elev. for wells @ C-43

Well PZ 208

STA	+	H.I.	-	ELEV	Remarks
BMPZ208	5.35	31.60		26.25	
GW1-A			1.51	30.09	✓
GW2-B			1.55	30.05	✓
GW1 PAD			4.78	26.82	
GW2 PAD			4.80	24.80	
Ground E			5.0	26.60	} 26.6
Ground N			4.8	26.80	
Ground W			5.1	26.50	
Ground S			4.9	26.70	
BMC43R55			5.47	26.13	[26.11]
			<u>Pt</u>		
BMC43R55	5.57	31.70		26.13	
GW2-B			1.65	30.05	
GW1-A			1.60	30.10	
BMPZ208			5.45	26.25	[26.25]