



SOUTH FLORIDA WATER MANAGEMENT DISTRICT

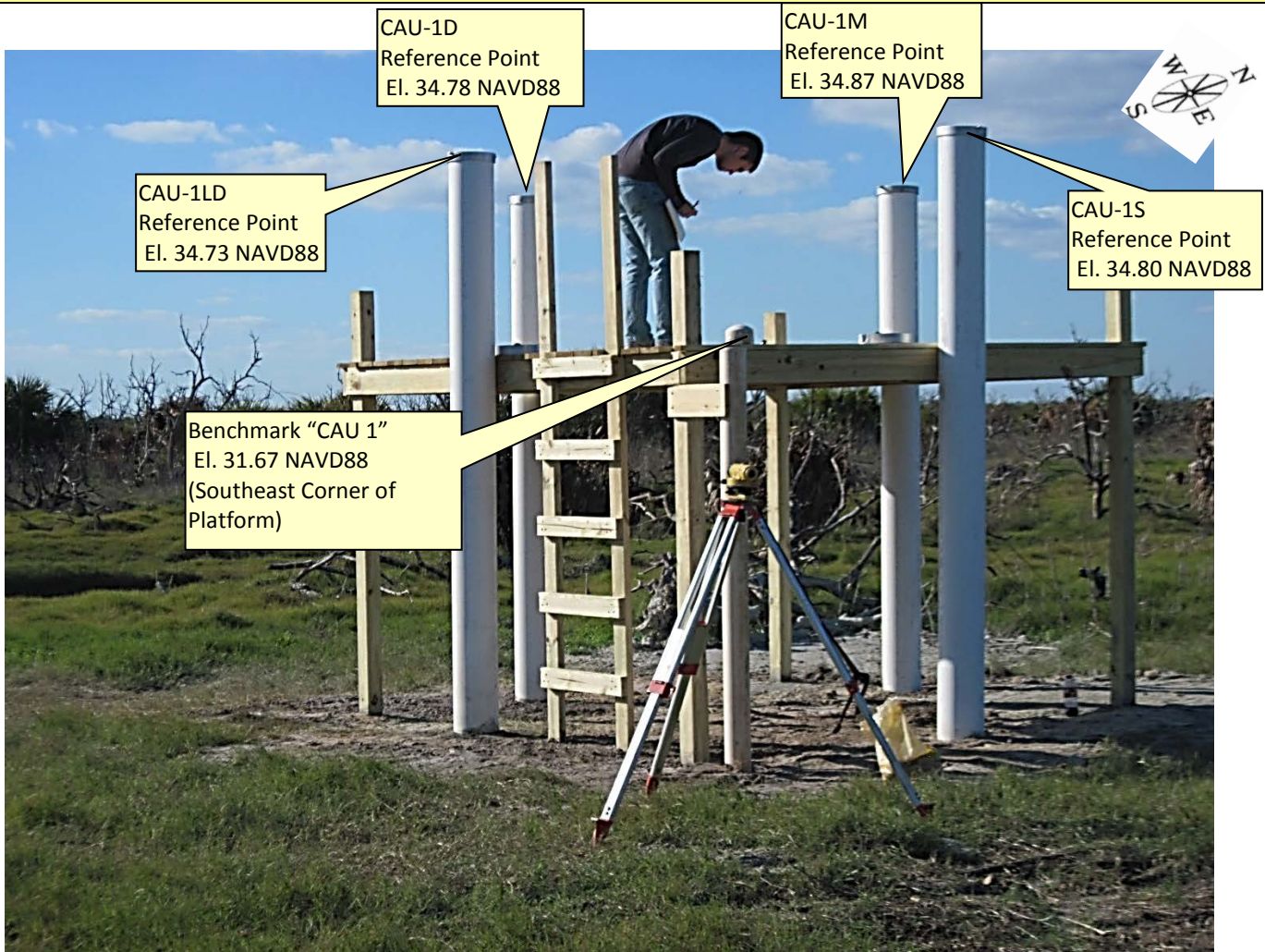
This form compiled from data on DVD disk and is not part of the report.

(For informational purposes only)

Rev. 1/16

Site Name: CAU-1		Date of Field Work: 11-feb-15	
Party Chief: Kett	Field Book: C-44 79K	Pages 41 & 42	
Site Benchmark: CAU 1	Benchmark Elevation (NAVD88) 31.67	Corpscon 6.0.1 Conversion Factor (NAVD88 to NGVD29) 1.398	
Reference Elevation(s) (NAVD88):		Ground Elevation (NAVD88):	
CAU-1S 34.80 "V" notch on 2" PVC	CAU-1S (East) 25.7		
CAU-1M 34.87 "V" notch on 2" PVC	CAU-1M (North) 25.5		
CAU-1D 34.78 "V" notch on 2" PVC	CAU-1D (West) 25.6		
CAU-1LD 34.73 "V" notch on 2" PVC	CAU-1LD (South) 25.9		
State Plane Coordinates (NAD83)			
Latitude: 27° 03' 08.9"		Longitude: 80° 22' 00.9" (Horizontal position collected with a Hand Held Garmin GPS 48	
Notes: NAVD88 – North American Vertical Datum of 1988 NGVD29 - National Geodetic Vertical Datum of 1929 NAD 83 – North American Datum of 1983 (Horizontal)		Corpscon 6.0.1 - A U.S. Army Corps of Engineers Engineering Research and Development Center Topographic Engineering Center Alexandria, Virginia Windows-based program to convert coordinates and elevations between datum's using vertcon05.txt and vertcon05.05 files supplied by the U.S. Army Corps of Engineers South Atlantic Division, Jacksonville FL.	

PICTURES



CAU 1 Overall Site
Looking Northwesterly (Not to Scale)



SOUTH FLORIDA WATER MANAGEMENT DISTRICT

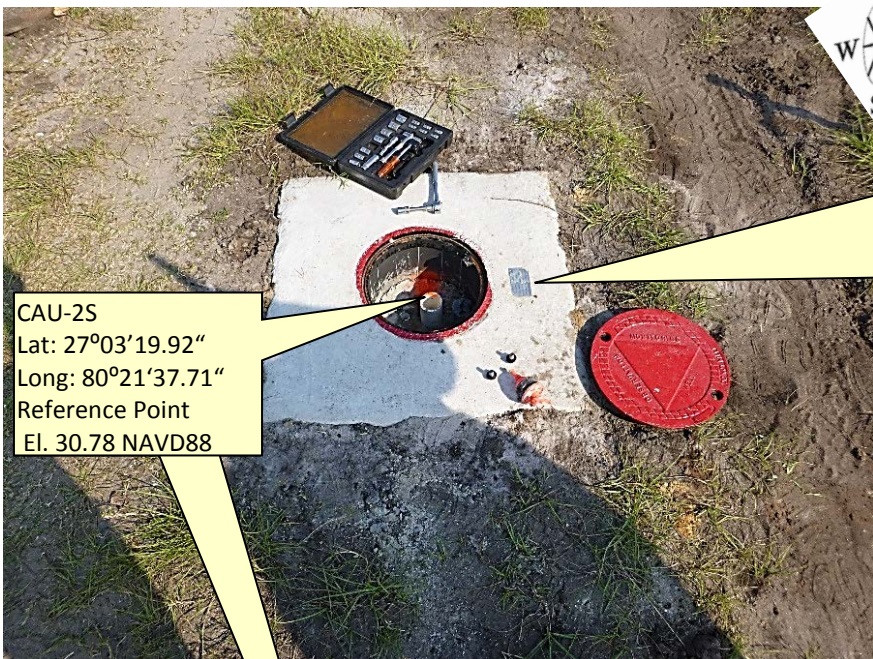
This form compiled from data on DVD disk and is not part of the report.
(For informational purposes only)

Rev. 1/16

Site Name: CAU-2S		Last Date of Field Work: 23-oct-14	
Party Chief: Strickland	Field Book: C-44 79K	Pages 33, 39 & 40	
Site Benchmark: CAU 2 2014	Benchmark Elevation (NAVD88) 24.76	Corpscon 6.0.1 Conversion Factor (NAVD88 to NGVD29) 1.404	
Reference Elevation(s) (NAVD88): 30.78	Top of Canal Water at Staff Gauge: 23.96	Ground Elevation (NAVD88): 31.2	
State Plane Coordinates (NAD83)	Y (N) = 989887	X (E) =864309	
Latitude: 27° 03' 19.92"	Longitude: 80° 21' 37.71"		
Notes: NAVD88 – North American Vertical Datum of 1988 NGVD29 - National Geodetic Vertical Datum of 1929 NAD 83 – North American Datum of 1983 (Horizontal)		Corpscon 6.0.1 - A U.S. Army Corps of Engineers Engineering Research and Development Center Topographic Engineering Center Alexandria, Virginia Windows-based program to convert coordinates and elevations between datum's using vertcon05.txt and vertcon05.05 files supplied by the U.S. Army Corps of Engineers South Atlantic Division, Jacksonville FL.	

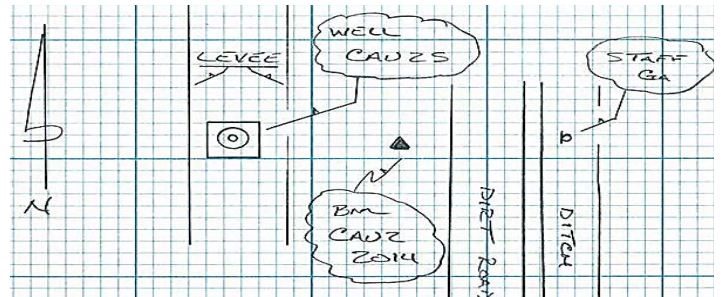
PICTURES

CAU-2S Overall Site



WELL ID #	CAU-2S
DATE INSTALLED	10-7-14
WELL DIAMETER	2"
TOP OF CASING (ELEV)	WWC 9917
TOTAL WELL DEPTH	16'
SCREENED INTERVAL	16'-14'

Looking Northerly





SOUTH FLORIDA WATER MANAGEMENT DISTRICT

This form compiled from data on DVD disk and is not part of the report.
(For informational purposes only)

Rev. 1/16

CAU-2S Staff Gauge



Looking Easterly



SOUTH FLORIDA WATER MANAGEMENT DISTRICT

This form compiled from data on DVD disk and is not part of the report.
(For informational purposes only)

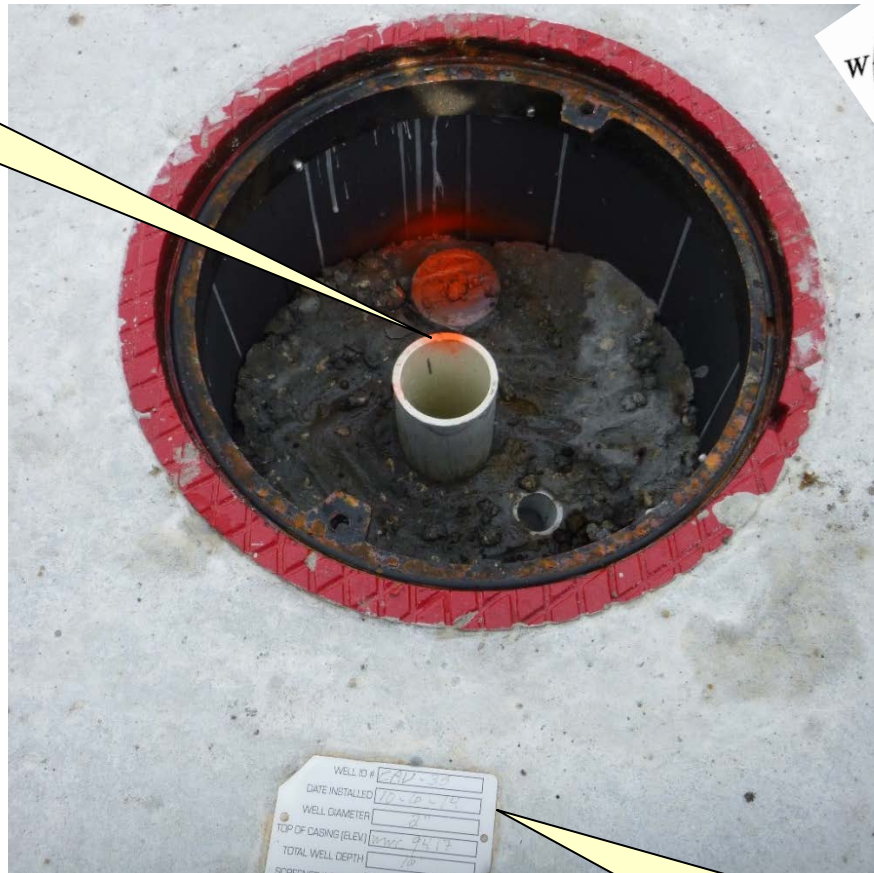
Rev. 1/16

Site Name: CAU-3S		Last Date of Field Work: 23-oct-14	
Party Chief: Strickland	Field Book: C-44 79K	Pages 36 & 40	
Site Benchmark: CAU 3 2014	Benchmark Elevation (NAVD88) 26.79	Corpscon 6.0.1 Conversion Factor (NAVD88 to NGVD29) 1.394	
Reference Elevation(s) (NAVD88): 26.98	Top of Canal Water at Staff Gauge: 24.13	Ground Elevation (NAVD88): 27.2	
State Plane Coordinates (NAD83)	Y (N) = 987400	X (E) = 862478	
Latitude: 27° 02' 55.391"	Longitude: 80° 21' 58.1"		
Notes: NAVD88 – North American Vertical Datum of 1988 NGVD29 - National Geodetic Vertical Datum of 1929 NAD 83 – North American Datum of 1983 (Horizontal)		Corpscon 6.0.1 - A U.S. Army Corps of Engineers Engineering Research and Development Center Topographic Engineering Center Alexandria, Virginia Windows-based program to convert coordinates and elevations between datum's using vertcon05.txt and vertcon05.05 files supplied by the U.S. Army Corps of Engineers South Atlantic Division, Jacksonville FL.	

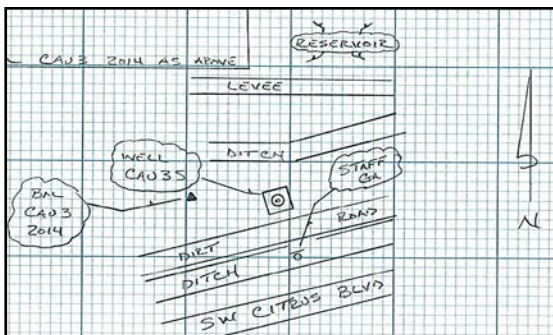
PICTURES

CAU-3S Overall Site

CAU-3S
 Lat: 27°02'55.391"
 Long: 80°21'58.1"
 Reference Point
 El. 26.98 NAVD88



Looking Northerly



WELL ID # **CAU-3S**

DATE INSTALLED **10-20-14**

WELL DIAMETER **2"**

TOP OF CASING (ELEV.) **WVC 94.77**

TOTAL WELL DEPTH **10**

SCREENED INTERVAL **14-16'**



SOUTH FLORIDA WATER MANAGEMENT DISTRICT

This form compiled from data on DVD disk and is not part of the report.
(For informational purposes only)

Rev. 1/16

CAU-3S Staff Gauge



Looking Westerly



SOUTH FLORIDA WATER MANAGEMENT DISTRICT

This form compiled from data on DVD disk and is not part of the report.
(For informational purposes only)

Rev. 1/16

Site Name: CAU-4S		Last Date of Field Work: 23-oct-14	
Party Chief: Strickland	Field Book: C-44 79K	Pages 35, 39 & 40	
Site Benchmark: CAU 4 2014	Benchmark Elevation (NAVD88) 26.29	Corpscon 6.0.1 Conversion Factor (NAVD88 to NGVD29) 1.391	
Reference Elevation(s) (NAVD88): 30.52	Top of Canal Water at Staff Gauge: N/A (reads 18.28)	Ground Elevation (NAVD88): 30.9	
State Plane Coordinates (NAD83)	Y (N) = 988794	X (E) = 859861	
Latitude: 27° 03' 09.32"	Longitude: 80° 22' 26.97"		
Notes: NAVD88 – North American Vertical Datum of 1988 NGVD29 - National Geodetic Vertical Datum of 1929 NAD 83 – North American Datum of 1983 (Horizontal)		Corpscon 6.0.1 - A U.S. Army Corps of Engineers Engineering Research and Development Center Topographic Engineering Center Alexandria, Virginia Windows-based program to convert coordinates and elevations between datum's using vertcon05.txt and vertcon05.05 files supplied by the U.S. Army Corps of Engineers South Atlantic Division, Jacksonville FL.	

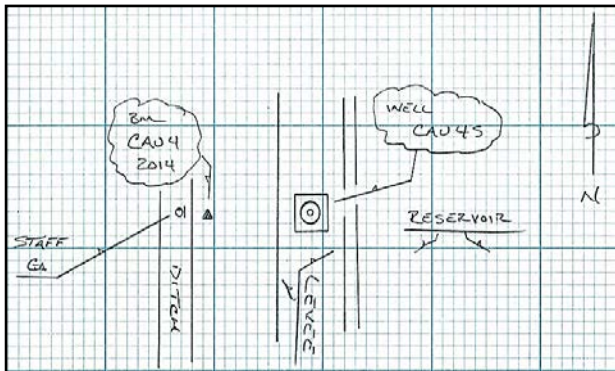
PICTURES

CAU-4S Well Site

CAU-4S
Lat: 27°03'09.32"
Long: 80°22'26.97"
Reference Point
El. 30.52 NAVD88



Looking Northerly



WELL ID # CAU-4S

DATE INSTALLED 10-6-14

WELL DIAMETER 2"

TOP OF CASING (ELEV.) WMC 94.17

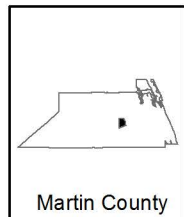
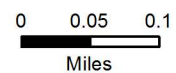
TOTAL WELL DEPTH 16'

SCREENED INTERVAL 14' - 16'



DRAFT Caulkins Water Farm Pilot Project

- Interior Stage
- Perimeter Stage
- ▲ Proposed Well Locations
- Caulkins Project Area



Prepared By: Resource Evaluation
 Map: Caulkins_ProjectArea.mxd
 Date: 7/3/2014 Time: 11:57:12 AM



SOUTH FLORIDA WATER MANAGEMENT DISTRICT

This form compiled from data on DVD disk and is not part of the report.
(For informational purposes only)

Rev. 1/16

CAU-4S Staff Gauge



Looking Westerly



SOUTH FLORIDA WATER MANAGEMENT DISTRICT

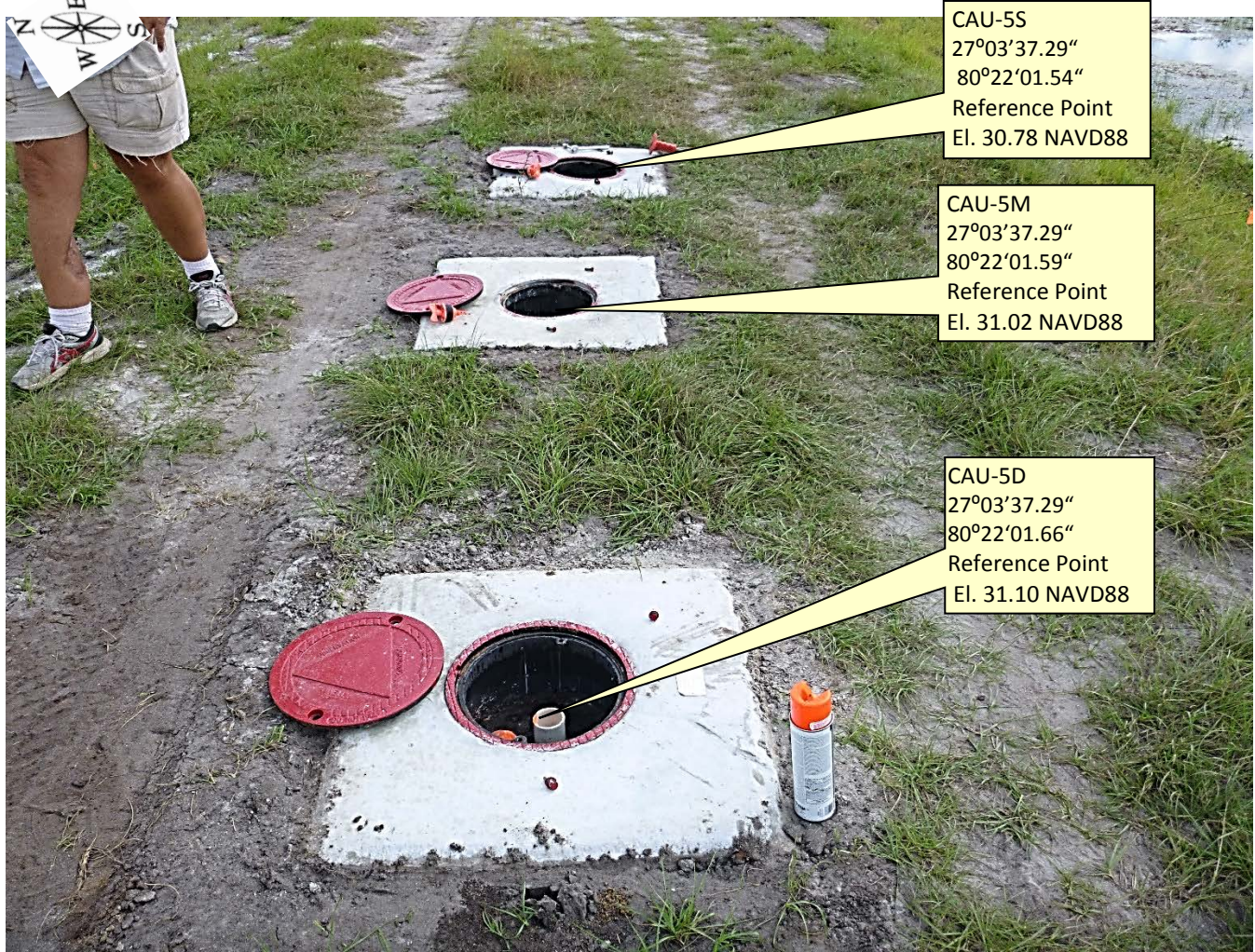
This form compiled from data on DVD disk and is not part of the report.
(For informational purposes only)

Rev. 1/16

Site Name: CAU-5		Last Date of Field Work: 23-oct-14	
Party Chief: Strickland		Field Book: C-44 79K	Pages 34, 39 & 40
Site Benchmark: CAU 5 2014		Benchmark Elevation (NAVD88) 25.80	
Reference Elevation(s) (NAVD88)	State Plane Coordinates (NAD83)	Latitude:	Longitude:
CAU-5S 30.78	Y (N) = 991623 X (E) = 862146	27° 03' 37.29"	80° 22' 01.54"
CAU-5M 31.02	Y (N) = 991630 X (E) = 862141	27° 03' 37.29"	80° 22' 01.59"
CAU-5D 31.10	Y (N) = 991630 X (E) = 862135	27° 03' 37.29"	80° 22' 01.66"
Top of Reservoir Water at Staff Gauge: 27.15 (Reads 27.17)		Ground Elevation (NAVD88): 31.4	
Notes: NAVD88 – North American Vertical Datum of 1988 NGVD29 - National Geodetic Vertical Datum of 1929 NAD 83 – North American Datum of 1983 (Horizontal)		Corpscon 6.0.1 - A U.S. Army Corps of Engineers Engineering Research and Development Center Topographic Engineering Center Alexandria, Virginia Windows-based program to convert coordinates and elevations between datum's using vertcon05.txt and vertcon05.05 files supplied by the U.S. Army Corps of Engineers South Atlantic Division, Jacksonville Fl.	

PICTURES

CAU-5S, CAU-5M and CAU-5D Overall Site



CAU-5S
27°03'37.29"
80°22'01.54"
Reference Point
El. 30.78 NAVD88

CAU-5M
27°03'37.29"
80°22'01.59"
Reference Point
El. 31.02 NAVD88

CAU-5D
27°03'37.29"
80°22'01.66"
Reference Point
El. 31.10 NAVD88

Looking Easterly

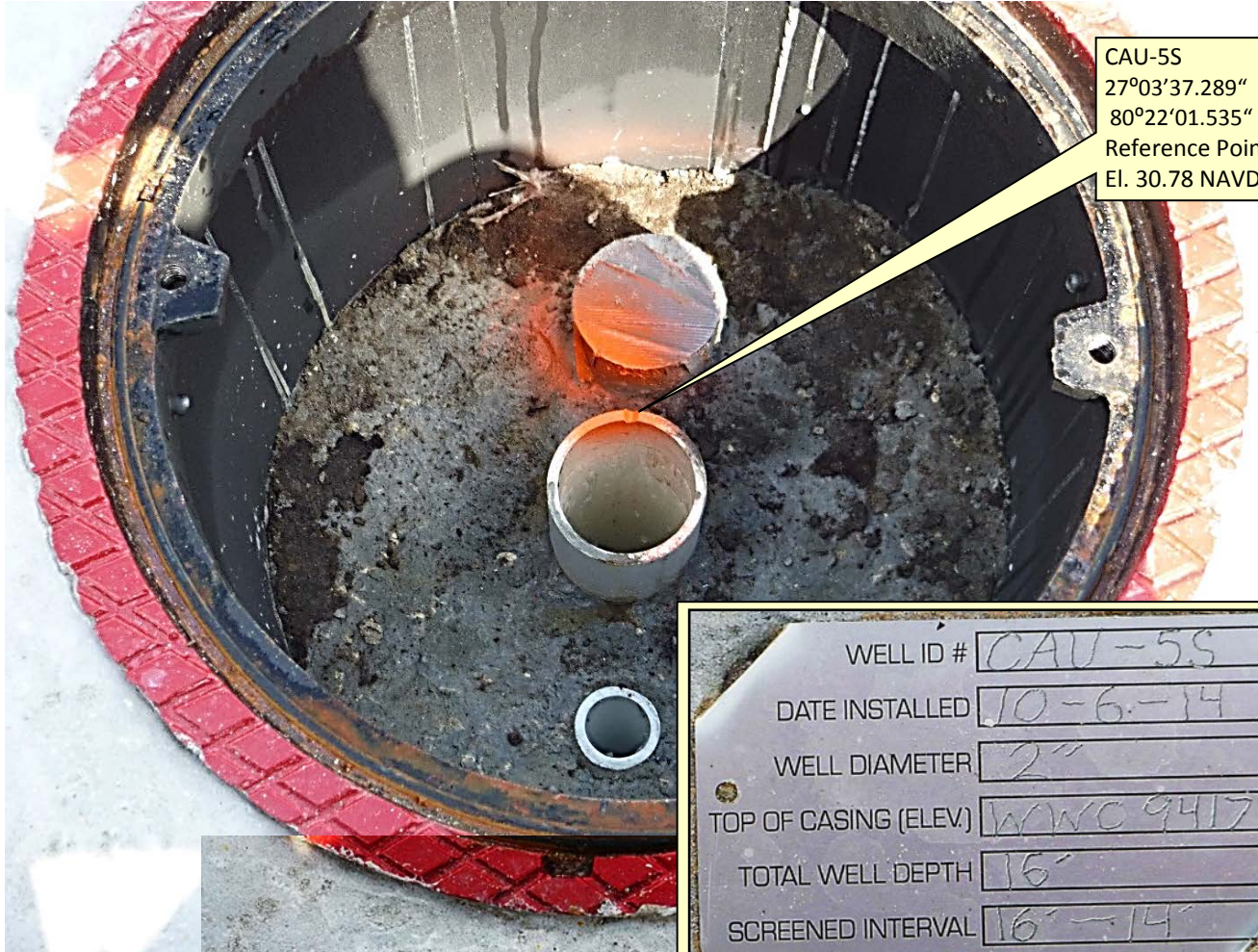


SOUTH FLORIDA WATER MANAGEMENT DISTRICT

This form compiled from data on DVD disk and is not part of the report.
(For informational purposes only)

Rev. 1/16

CAU-5S Well



CAU-5S
27°03'37.289"
80°22'01.535"
Reference Point
El. 30.78 NAVD88

WELL ID #	CAU-5S
DATE INSTALLED	10-6-14
WELL DIAMETER	2"
TOP OF CASING (ELEV)	WVC 9417
TOTAL WELL DEPTH	16'
SCREENED INTERVAL	16'-14'



WELL ID #	CAU-5S
DATE INSTALLED	10-6-14
WELL DIAMETER	2"
TOP OF CASING (ELEV)	WVC 9417
TOTAL WELL DEPTH	16'
SCREENED INTERVAL	16'-14'

Looking Northerly



SOUTH FLORIDA WATER MANAGEMENT DISTRICT

This form compiled from data on DVD disk and is not part of the report.
(For informational purposes only)

Rev. 1/16

CAU-5M Well



CAU-5M
27°03'37.29"
80°22'01.59"
Reference Point
El. 31.02 NAVD88

WELL ID #	CAU-5M
DATE INSTALLED	10-7-14
WELL DIAMETER	2"
TOP OF CASING (ELEV.)	WVC 9417
TOTAL WELL DEPTH	31'
SCREENED INTERVAL	31'-21'

WELL ID #	CAU-5M
DATE INSTALLED	10-7-14
WELL DIAMETER	2"
TOP OF CASING (ELEV.)	WVC 9417
TOTAL WELL DEPTH	31'
SCREENED INTERVAL	31'-21'

Looking Northerly

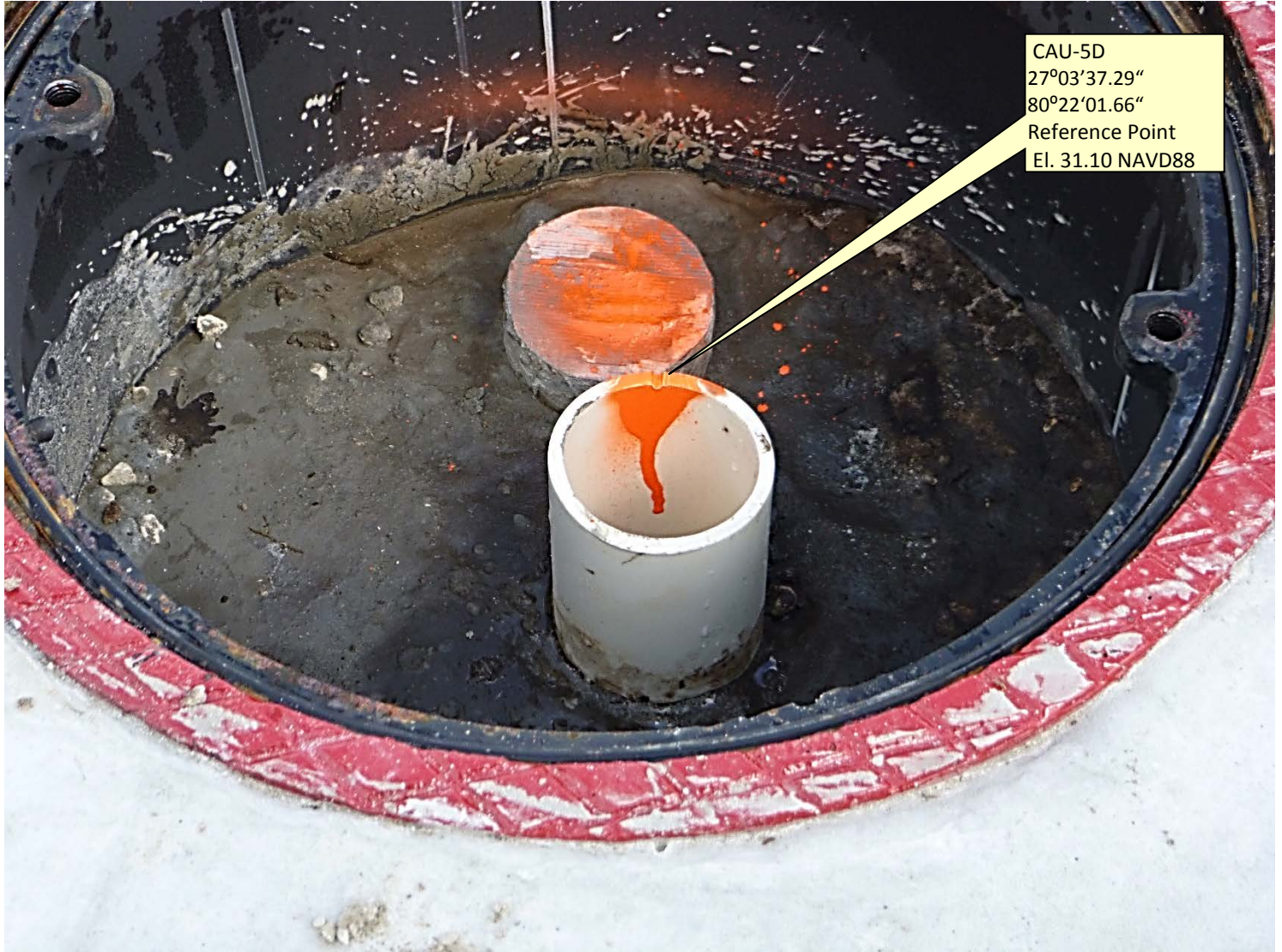


SOUTH FLORIDA WATER MANAGEMENT DISTRICT

This form compiled from data on DVD disk and is not part of the report.
(For informational purposes only)

Rev. 1/16

CAU-5D Well



Looking Northerly

WELL ID #	CAU-5D
DATE INSTALLED	10-7-14
WELL DIAMETER	2"
TOP OF CASING (ELEV.)	WWC 9417
TOTAL WELL DEPTH	79'
SCREENED INTERVAL	79'-69'



SOUTH FLORIDA WATER MANAGEMENT DISTRICT

This form compiled from data on DVD disk and is not part of the report.

(For informational purposes only)

Rev. 1/16

CAU-5 Well Site Staff Gauge



Looking Southerly



SOUTH FLORIDA WATER MANAGEMENT DISTRICT

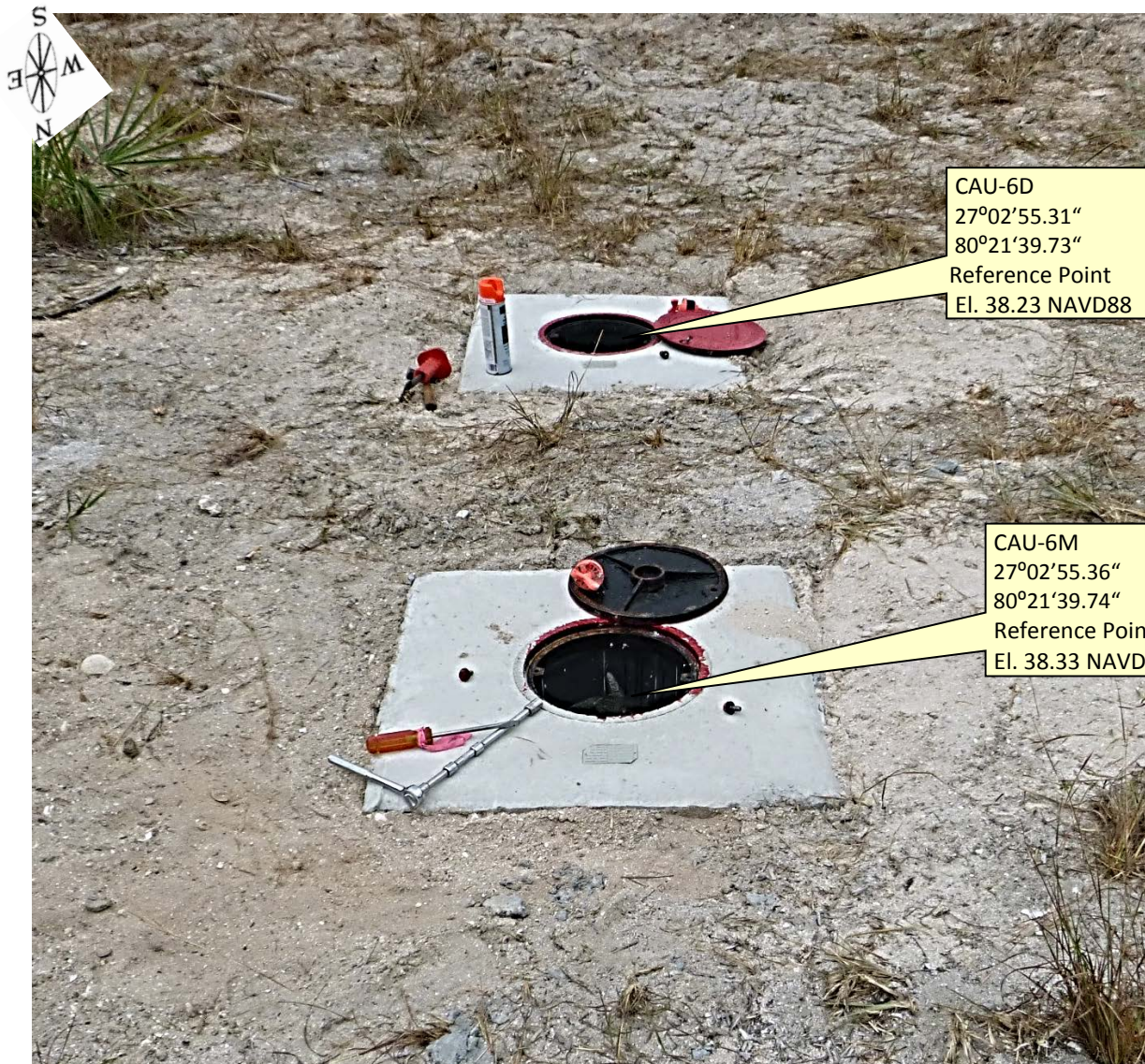
This form compiled from data on DVD disk and is not part of the report.
(For informational purposes only)

Rev. 1/16

Site Name: CAU-6		Last Date of Field Work: 23-oct-14		
Party Chief: Strickland		Field Book: C-44 79K	Pages 38 & 40	
Site Benchmark: CAU 6 2014		Benchmark Elevation (NAVD88) 39.41		
Reference Elevation(s) (NAVD88)		State Plane Coordinates (NAD83)		Corpscon 6.0.1 Conversion
CAU-6M	38.33	Y (N) = 987406	X (E) = 864138	Latitude: 27° 02' 55.36" Longitude: 80° 21' 39.74"
CAU-6D	38.23	Y (N) = 987400	X (E) = 864139	Latitude: 27° 02' 55.31" Longitude: 80° 21' 39.73"
Top of Reservoir Water at Staff Gauge: N/A			Ground Elevation (NAVD88): 38.7	
Notes: NAVD88 – North American Vertical Datum of 1988 NGVD29 - National Geodetic Vertical Datum of 1929 NAD 83 – North American Datum of 1983 (Horizontal)		Corpscon 6.0.1 - A U.S. Army Corps of Engineers Engineering Research and Development Center Topographic Engineering Center Alexandria, Virginia Windows-based program to convert coordinates and elevations between datum's using vertcon05.txt and vertcon05.05 files supplied by the U.S. Army Corps of Engineers South Atlantic Division, Jacksonville Fl.		

PICTURES

CAU-6M and CAU-6D Overall Site



CAU-6D
27°02'55.31"
80°21'39.73"
Reference Point
El. 38.23 NAVD88

CAU-6M
27°02'55.36"
80°21'39.74"
Reference Point
El. 38.33 NAVD88

Looking Southerly



SOUTH FLORIDA WATER MANAGEMENT DISTRICT

This form compiled from data on DVD disk and is not part of the report.
(For informational purposes only)

Rev. 1/16

CAU-6M Well



Looking Southerly



SOUTH FLORIDA WATER MANAGEMENT DISTRICT

This form compiled from data on DVD disk and is not part of the report.
(For informational purposes only)

Rev. 1/16

CAU-6D Well



Looking Southerly



SOUTH FLORIDA WATER MANAGEMENT DISTRICT

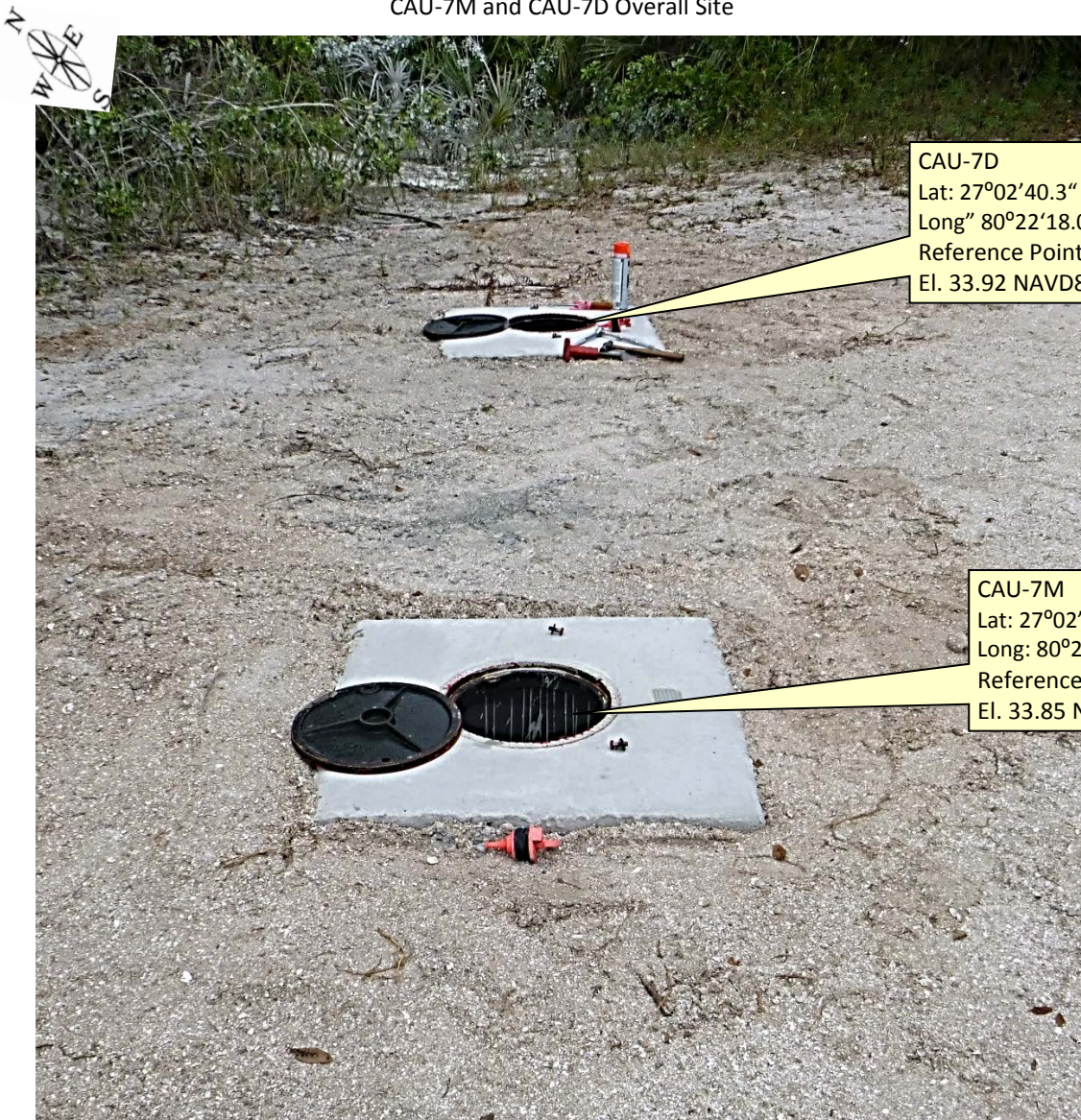
This form compiled from data on DVD disk and is not part of the report.
(For informational purposes only)

Rev. 1/16

Site Name: CAU-7		Last Date of Field Work: 21-oct-14		
Party Chief: Strickland		Field Book: C-44 79K	Pages 37 & 40	
Site Benchmark: CAU 7 2014		Benchmark Elevation (NAVD88) 33.61		
Reference Elevation(s) (NAVD88)	State Plane Coordinates (NAD83)		Latitude:	Longitude:
CAU-7M 33.85	Y (N) = 985861 X (E) = 860679		27° 02' 40.24"	80° 22' 18.08"
CAU-7D 33.92	Y (N) = 985867 X (E) = 860686		27° 02' 40.3"	80° 22' 18.00"
Top of Reservoir Water at Staff Gauge: N/A			Ground Elevation (NAVD88): 34.2	
Notes: NAVD88 – North American Vertical Datum of 1988 NGVD29 - National Geodetic Vertical Datum of 1929 NAD 83 – North American Datum of 1983 (Horizontal)		Corpscon 6.0.1 - A U.S. Army Corps of Engineers Engineering Research and Development Center Topographic Engineering Center Alexandria, Virginia Windows-based program to convert coordinates and elevations between datum's using vertcon05.txt and vertcon05.05 files supplied by the U.S. Army Corps of Engineers South Atlantic Division, Jacksonville Fl.		

PICTURES

CAU-7M and CAU-7D Overall Site



CAU-7D
Lat: 27°02'40.3"
Long: 80°22'18.00"
Reference Point
El. 33.92 NAVD88

CAU-7M
Lat: 27°02'40.24"
Long: 80°22'18.08"
Reference Point
El. 33.85 NAVD88

Looking Northeasterly

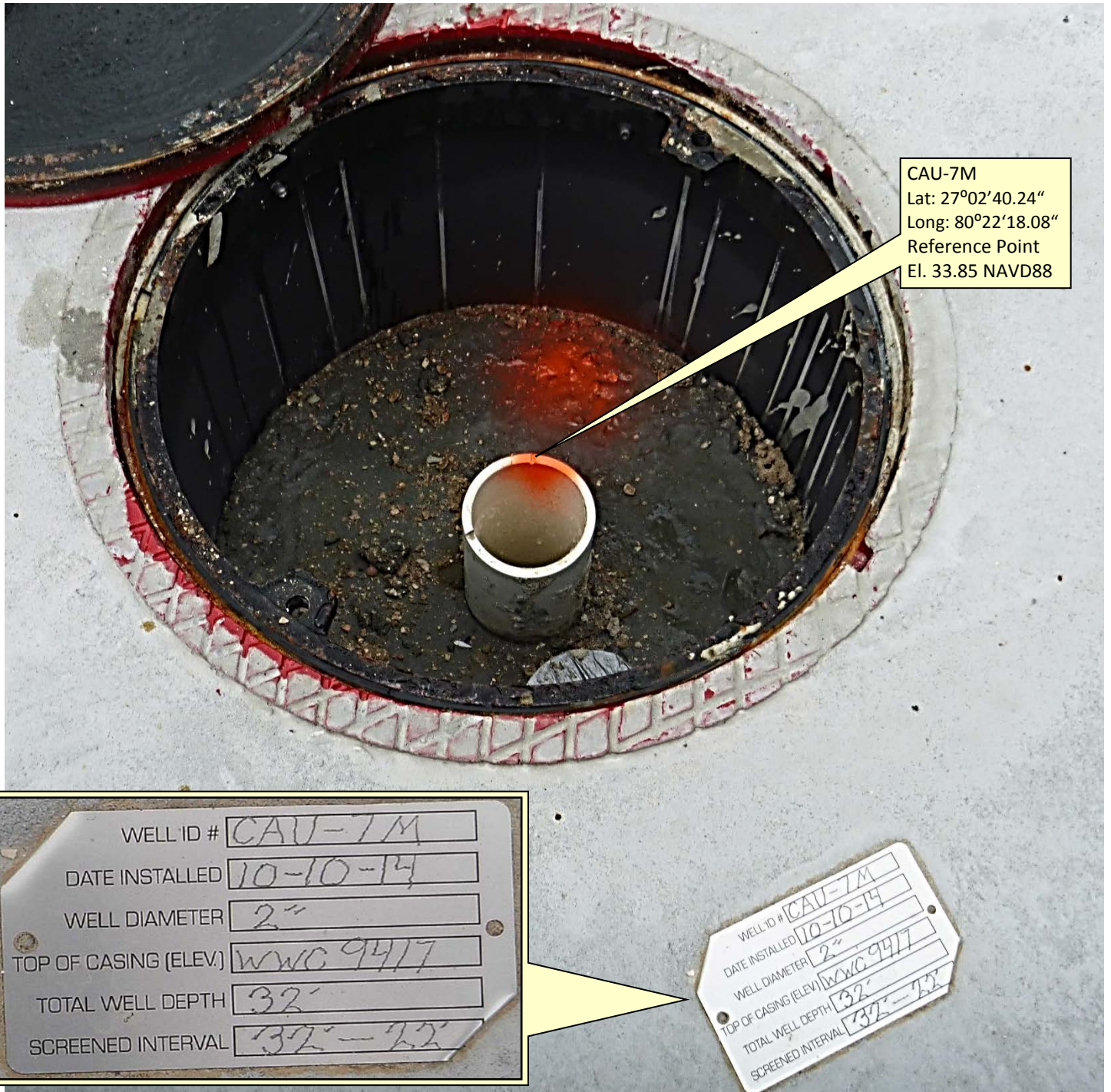


SOUTH FLORIDA WATER MANAGEMENT DISTRICT

This form compiled from data on DVD disk and is not part of the report.
(For informational purposes only)

Rev. 1/16

CAU-7M Well



Looking Northerly



SOUTH FLORIDA WATER MANAGEMENT DISTRICT

This form compiled from data on DVD disk and is not part of the report.
(For informational purposes only)

Rev. 1/16

CAU-7D Well



CAU-7D
Lat: 27°02'40.3"
Long: 80°22'18.00"
Reference Point
El. 33.92 NAVD88

Looking Northerly

WELL ID #	CAU-7D
DATE INSTALLED	10-9-14
WELL DIAMETER	2"
TOP OF CASING (ELEV.)	WVC 9477
TOTAL WELL DEPTH	80"
SCREENED INTERVAL	80' - 70'

