

Company		Diversified Drilling Corp.	
Well	EXKR-1	Location	Sec 19 T38S R35E
Field	Kissimmee River	Lat.:	27 08' 45" N Long.: 80 52' 15" W
County	Okechobee	UIC Permit #:	200917-001-UIC
State/Prv	Florida	Permanent Datum	G.L.
		Log Measured From	G.L.
		Drilling Measured From	G.L.
		Elevation	-18'
		Other Services	X/YGR FRT VIDEO
		Elevation	K.B. NSVD 29' Q.L. -18'
Run Number	ONE	Date	7-APR-2004
Depth Driller	875'	Run Number	NINE
Depth Logger	878'	Open Hole Size	22.5"
Bottom Logged Interval	876'	Type Fluid	WATER
Top Log Interval	495'	Density / Viscosity	8.39/NA
		Max. Recorded Temp.	SEE FRT
		Estimated Cement Top	249'
		Time Well Ready	11:00 4/7/04
		Time Logger on Bottom	12:15 4/7/04
		Equipment Number	MVGS-1
		Location	Fl. Myers
		Recorded By	S. Miller
		Witnessed By	P. D'Amico (BFA)
		Bi-Hammon (DDC)	
Run Number	ONE	Bit	225'
THREE	40"	Size	22.5"
FOUR	33"	Weight	562'
	170'	From	562'
	9.625"	To	875'
Size	42"	Top	
Surface Slimg	0.375' WT	SURFACE	39'
Production Slimg	0.375' WT	SURFACE	170'
	24"	SURFACE	562'
Liner	10.25-2x		
Job No.:	2004090	P. O. #:	
		Job No.:	2093

<<< Fold Here >>>

All interpretations are opinions based on inferences from electrical or other measurements and we cannot and do not guarantee the accuracy or correctness of any interpretation, and we shall not, except in the case of gross or willful negligence on our part, be liable or responsible for any loss, costs, damages, or expenses incurred or sustained by anyone resulting from any interpretation made by any of our officers, agents or employees. These interpretations are also subject to our general terms and conditions set out in our current Price Schedule.

Comments

STATIC & DYNAMIC down passes were made at 50 fpm.

1 Stationary data set was collected.

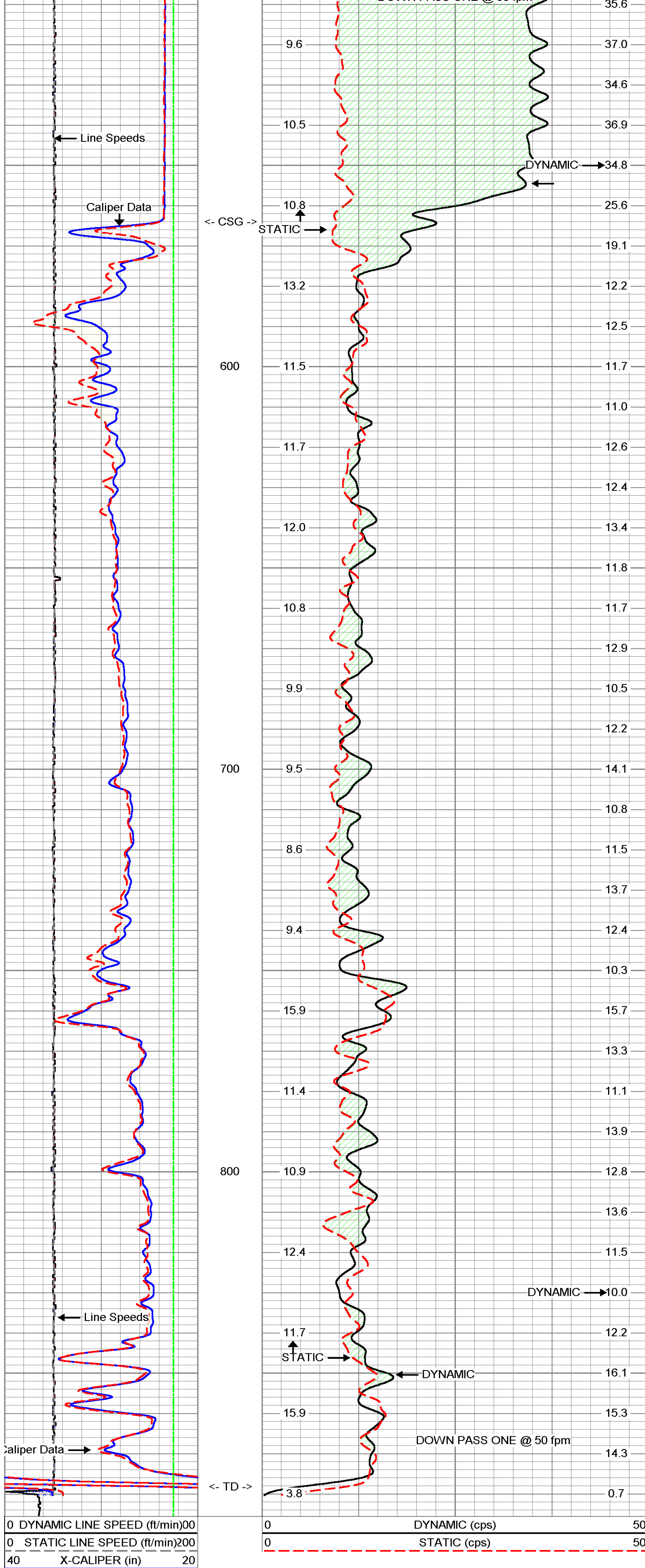
Q=1,107 gpm

SFWMMD / CH2M Hill, Inc./BFA

S/D Down @ 50 fpm

Database File: krasr-1.db
 Dataset Pathname: run9/SD50
 Presentation Format: Q50KR2
 Dataset Creation: Wed Apr 07 16:37:43 2004
 Charted by: Depth in Feet scaled 1:240

0 DYNAMIC LINE SPEED (ft/min)	00	0 DYNAMIC (cps)	50
0 STATIC LINE SPEED (ft/min)	200	0 STATIC (cps)	50
40 X-CALIPER (in)	20		
40 Y-CALIPER (in)	20		
40 BIT SIZE (in)	20		

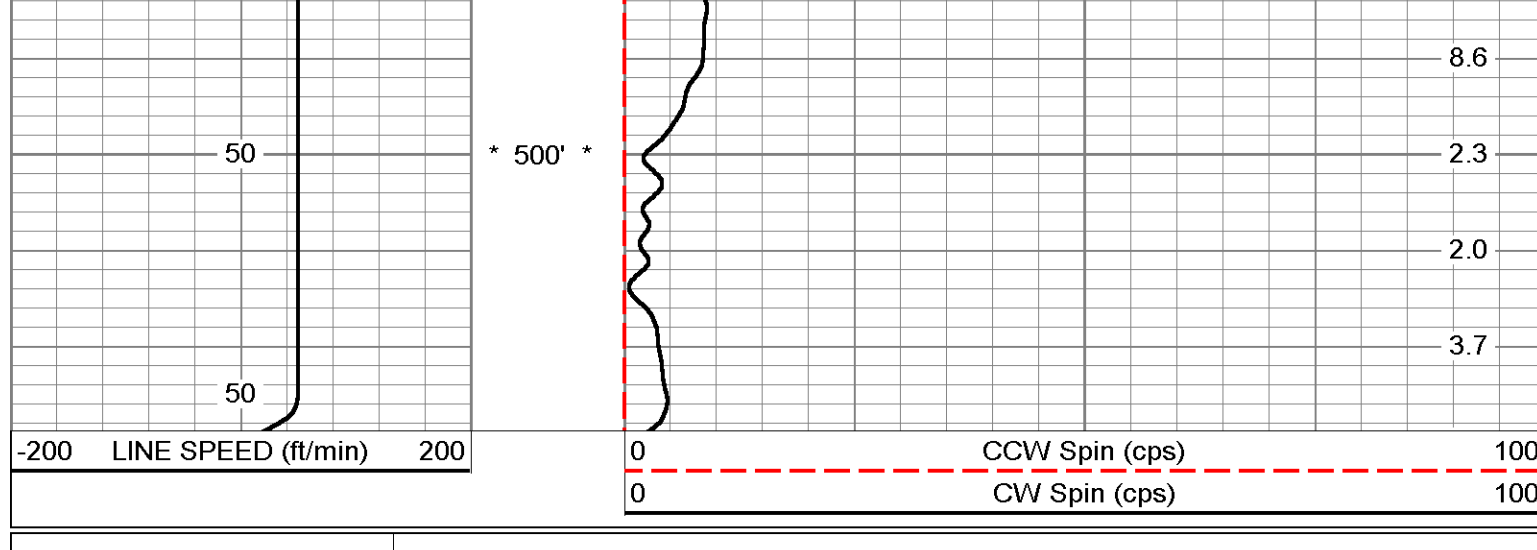


0 DYNAMIC LINE SPEED (ft/min)	00	0 DYNAMIC (cps)	50
0 STATIC LINE SPEED (ft/min)	200	0 STATIC (cps)	50
40 X-CALIPER (in)	20		
40 Y-CALIPER (in)	20		
40 BIT SIZE (in)	20		

Station #1: 500'

Database File: krasr-1.db
 Dataset Pathname: run9/pass4
 Presentation Format: FLOW
 Dataset Creation: Wed Apr 07 12:49:29 2004 by Log VER_5.3
 Charted by: Depth in Feet scaled 1:240

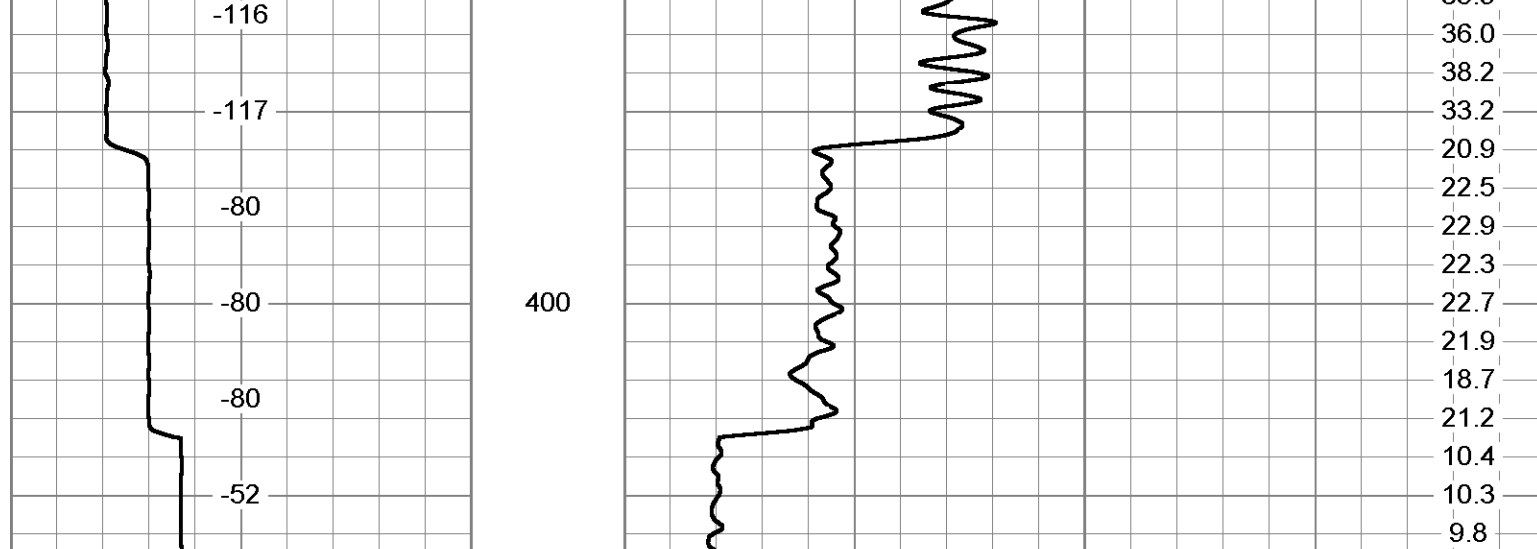
-200 LINE SPEED (ft/min)	200	0 CCW Spin (cps)	100
		0 CW Spin (cps)	100



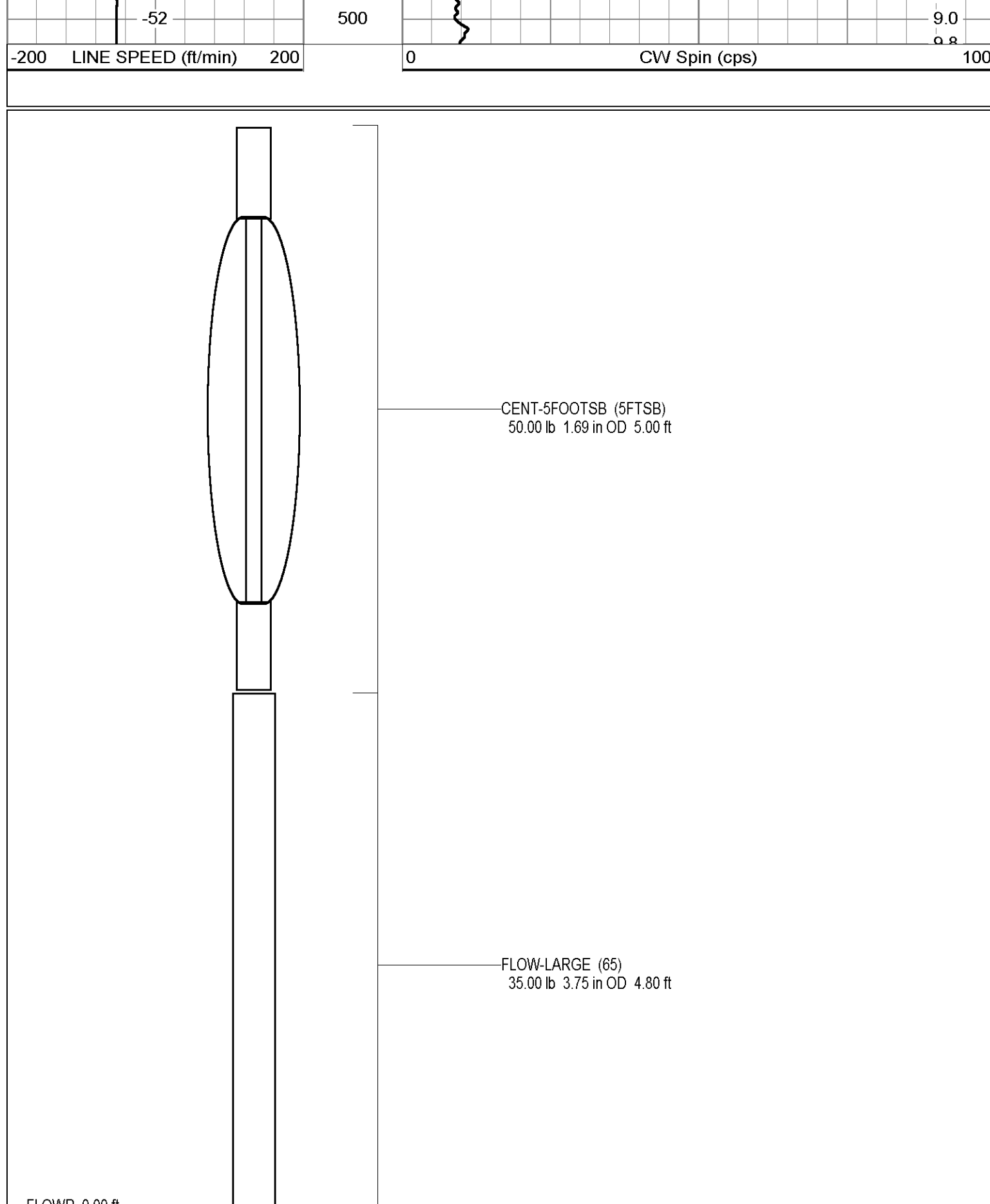
Q Calibration Down

Database File: krasr-1.db
 Dataset Pathname: run9/QCALI
 Presentation Format: FLOW
 Dataset Creation: Wed Apr 07 16:45:02 2004
 Charted by: Depth in Feet scaled 1:600

-200 LINE SPEED (ft/min)	200	0 CW Spin (cps)	100
--------------------------	-----	-----------------	-----



-200 LINE SPEED (ft/min)	200	0 CW Spin (cps)	100
--------------------------	-----	-----------------	-----



Dataset: run9/pass4
 Total Length: 9.80 ft
 Total Weight: 85.00 lb
 O.D.: 3.75 in



FLOWMETER LOG

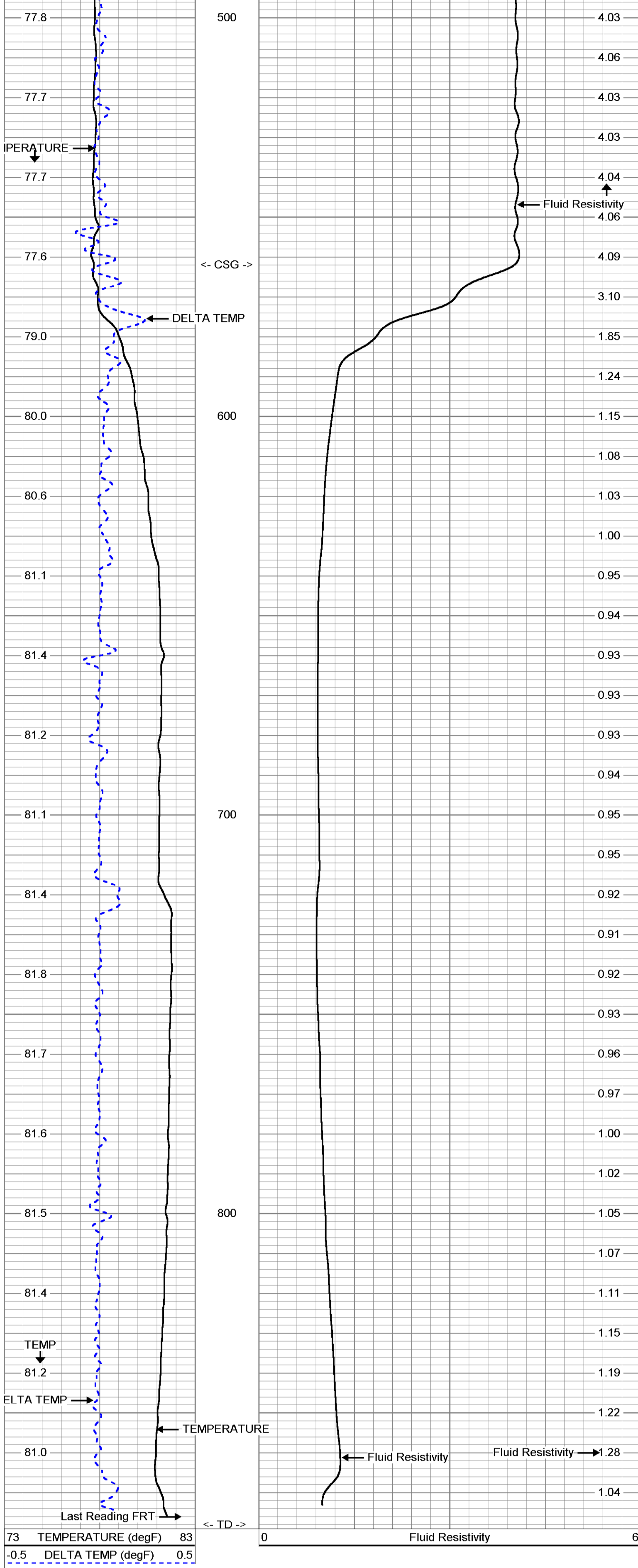
Company		Diversified Drilling Corp.	
Well	EXKR-1	Field	Kissimmee River
County	Okeechobee	State/Pv	Florida
Company	Diversified Drilling Corporation	Well	EXKR-1
Field	Kissimmee River	County	Okeechobee
State/Pv	Florida	Location	Sec 19 T38S R35E
		Lat	27 08 45' N Long: 80 52 15' W
		UIC Permit #	200917-001-UC
Date	7-Apr-2004	Permanent Datum	G.L.
Run Number	NINE	Log Measured From	G.L.
Depth Driller	875	Drilling Measured From	G.L.
Bottom Logger	876	Elevation	-18'
Bottom Logged Interval	876	K.B. NGVD 29'	0.L. -18'
Open Hole Size	22.5"		
Type Fluid	WATER		
Density / Viscosity	8.35/NA		
Max. Recorded Temp.	SEE FRT		
Estimated Cement Top	249'		
Time Well Ready	11:00 4/7/04		
Equipment Number	MWGS-1		
Location	Ft. Myers		
Recorded By	S.Miller		
Witnessed By	P.D'Amo (BFA)		

All interpretations are opinions based on inferences from electrical or other measurements and we cannot and do not guarantee the accuracy or correctness of any interpretation, and we shall not, except in the case of gross or willful negligence on our part, be liable or responsible for any loss, costs, damages, or expenses incurred or sustained by anyone resulting from any interpretation made by any of our officers, agents or employees. These interpretations are also subject to our general terms and conditions set out in our current Price Schedule.

Comments
 STATIC and DYNAMIC DOWN passes were performed.
 Rw=4.015 ohm-m @ 77.7 degF (Dynamic Sample). Q=~1,070 gpm.
FLUID RESISTIVITY CALIBRATION REPORT (Performed: 6-APR-04 13:00)
 OHM-M CPS
 0.312 1991.12
 0.725 2152.32
 4.829 3565.23
 28.25 4545.43
TEMPERATURE CALIBRATION REPORT (Performed: 6-APR-04 13:45)
 DEG-F CPS
 34.1 2341.11
 141.1 6951.21
 SFWMD / CH2M Hill, Inc./BFA

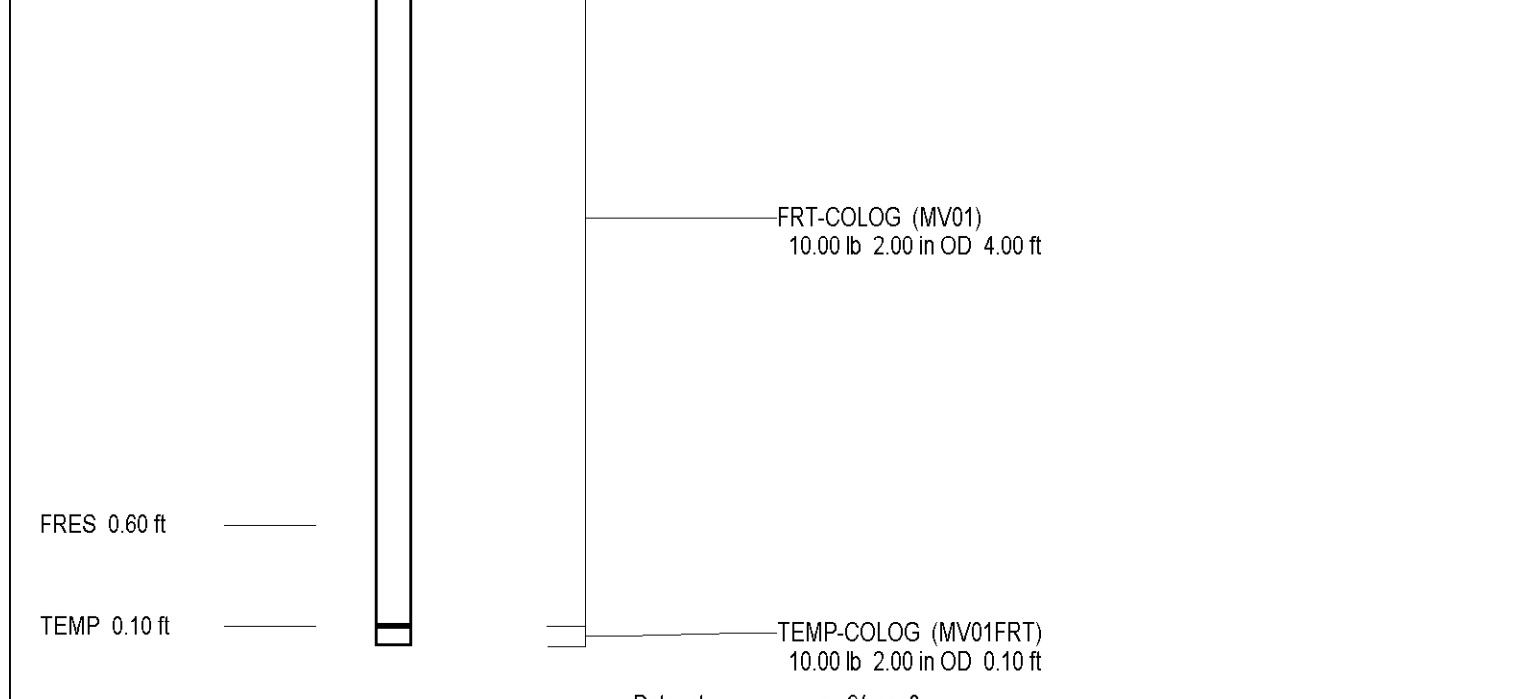
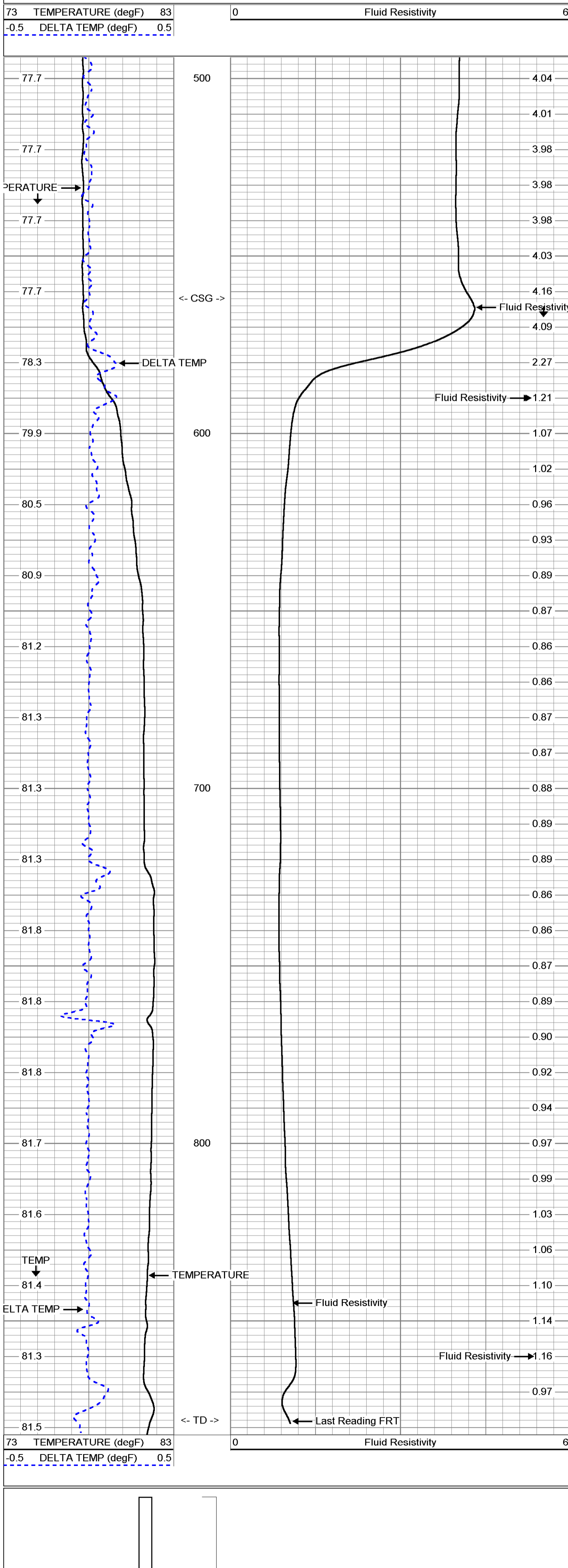
Dynamic FRT Down

Database File: krasr-1.db
 Dataset Pathname: run9/dfrt
 Presentation Format: FRTKR3
 Dataset Creation: Wed Apr 07 13:44:08 2004
 Charted by: Depth in Feet scaled 1:240



Static FRT Down

Database File: krasr-1.db
 Dataset Pathname: run9/sfrt
 Presentation Format: FRTKR3
 Dataset Creation: Wed Apr 07 14:07:40 2004
 Charted by: Depth in Feet scaled 1:240



Company		Diversified Drilling Corp.	
Well	EXKR-1	Field	Kissimmee River
County	Okeechobee	State/Prv	Florida
Location	Sec 19 T36S R33E Lat.: 27 08 45" N Long.: 80 52 15" W	UIC Permit #:	200917-001-UIC
Permanent Datum	G.L.	Elevation	-18'
Log Measured From	G.L.	K.B. NGVD 29'	G.L. -18'
Drilling Measured From	G.L.		
Date	7-APR-2004		
Run Number	NINE		
Depth Driller	875		
Bottom Logged Interval	876		
Top Log Interval	495		
Open Hole Size	22.5"		
Type Fluid	WATER		
Density / Viscosity	8.35/NA		
Max. Recorded Temp.	SEE FRT		
Estimated Cement Top	249		
Time Well Ready	11:00 4/7/04		
Equipment Number	11-15-47/04		
Location	Fl Myers		
Witnessed By	S.Miller		
Recorded By	B.Hamm (DDCI)		
Run Number	Bit	From	To
ONE	7.875"	35'	225'
TWO	4.0"	35'	173'
THREE	1.0"	170'	583'
FOUR	3.25"	583'	592'
Casing Record	SS2	592'	592'
Production String	42"		
Prot. String	34"		
Production String	24"		
Lineer	10-25-2X		
Job No.:	2004060	P.O.#:	
		Job No.:	2033

<<< Fold Here >>>

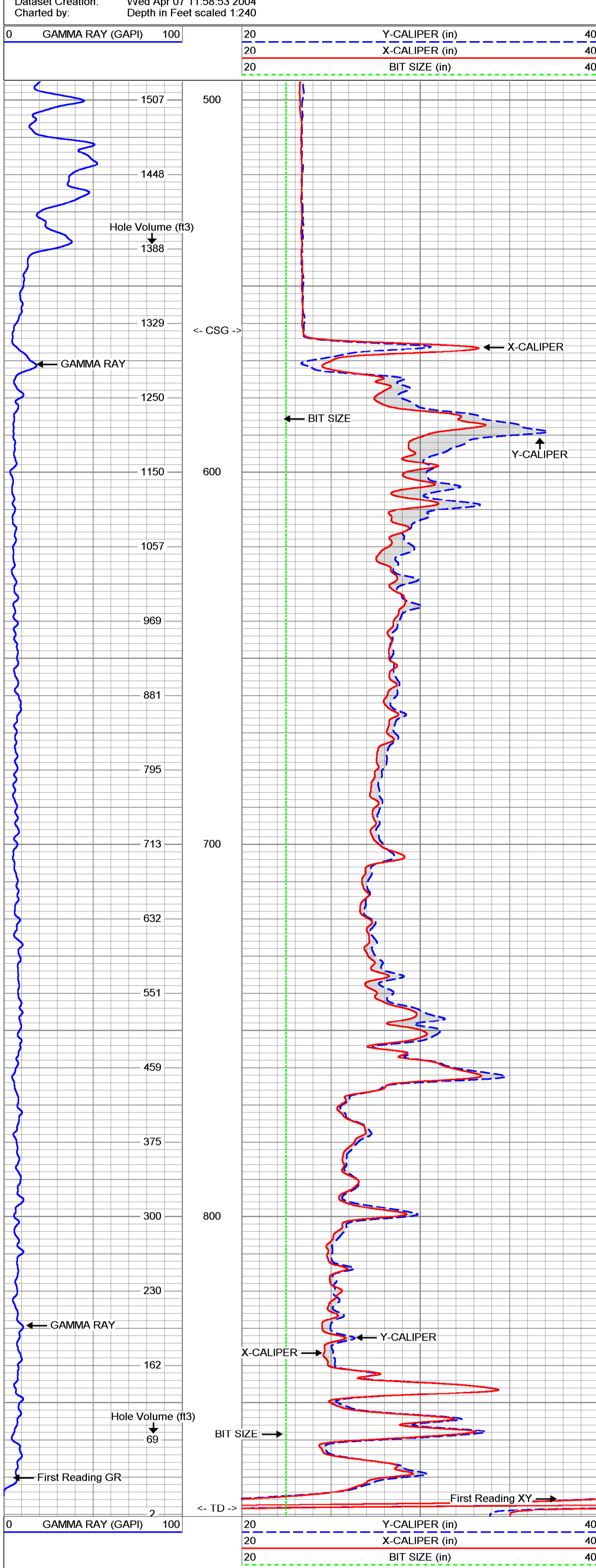
All interpretations are opinions based on inferences from electrical or other measurements and we cannot and do not guarantee the accuracy or correctness of any interpretation, and we shall not, except in the case of gross or willful negligence on our part, be liable or responsible for any loss, costs, damages, or expenses incurred or sustained by anyone resulting from any interpretation made by any of our officers, agents or employees. These interpretations are also subject to our general terms and conditions set out in our current Price Schedule.

Comments

X-Y Caliper Arm Extensions: 51"
SFWMD / CH2M Hill, Inc./BFA

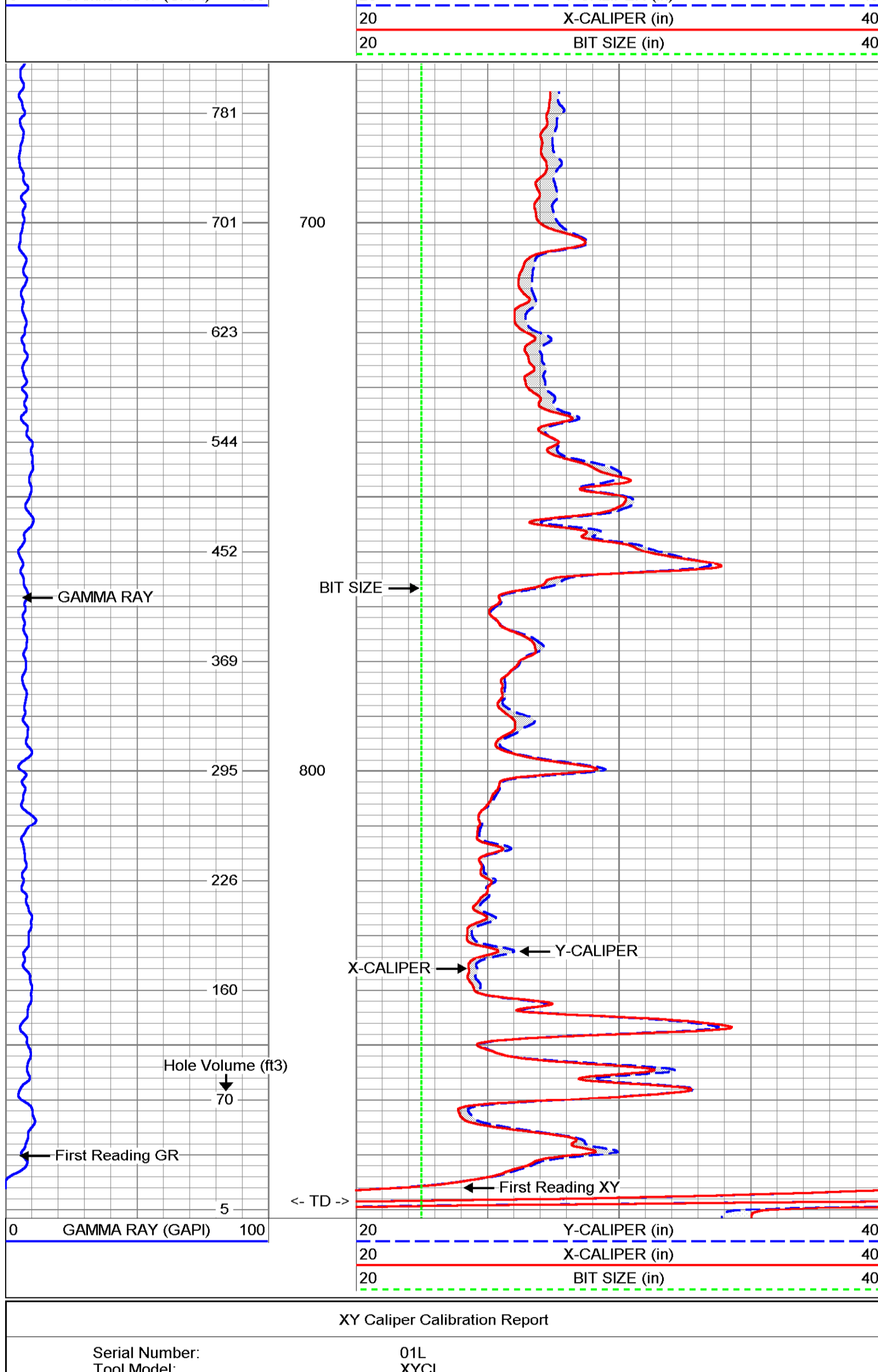
MV Geophysical **MAIN PASS**

Database File: krasr-1 db
Dataset Pathname: run9/MAIN
Presentation Format: XY2040-5
Dataset Creation: Wed Apr 07 11:58:53 2004
Charted by: Depth in Feet scaled 1:240



MV Geophysical **REPEAT SECTION**

Database File: krasr-1 db
Dataset Pathname: run9/REPEAT
Presentation Format: XY2040-5
Dataset Creation: Wed Apr 07 12:01:10 2004
Charted by: Depth in Feet scaled 1:240



XY Caliper Calibration Report

Serial Number:	01L		
Tool Model:	XYCL		
Performed:	Wed Apr 07 11:35:40 2004		
Small Ring:	23.25	in	
Large Ring:	51	in	
	X Caliper	Y Caliper	
Reading with Small Ring:	648.5	671.5	cps
Reading with Large Ring:	1021.71	1049.16	cps
Gain:	0.0743549	0.0734788	
Offset:	-24.9692	-26.091	

Gamma Ray Calibration Report

Serial Number:	01		
Tool Model:	GROH		
Performed:	Wed Apr 07 11:18:49 2004		
Calibrator Value:	120	GAPI	
Background Reading:	5.643	cps	
Calibrator Reading:	124.647	cps	
Sensitivity:	1.00837	GAPI/cps	

