

LEVELS TO WELL SITE EXOTIC FISH
IN SEC. 9 TWP 29S R5E32E

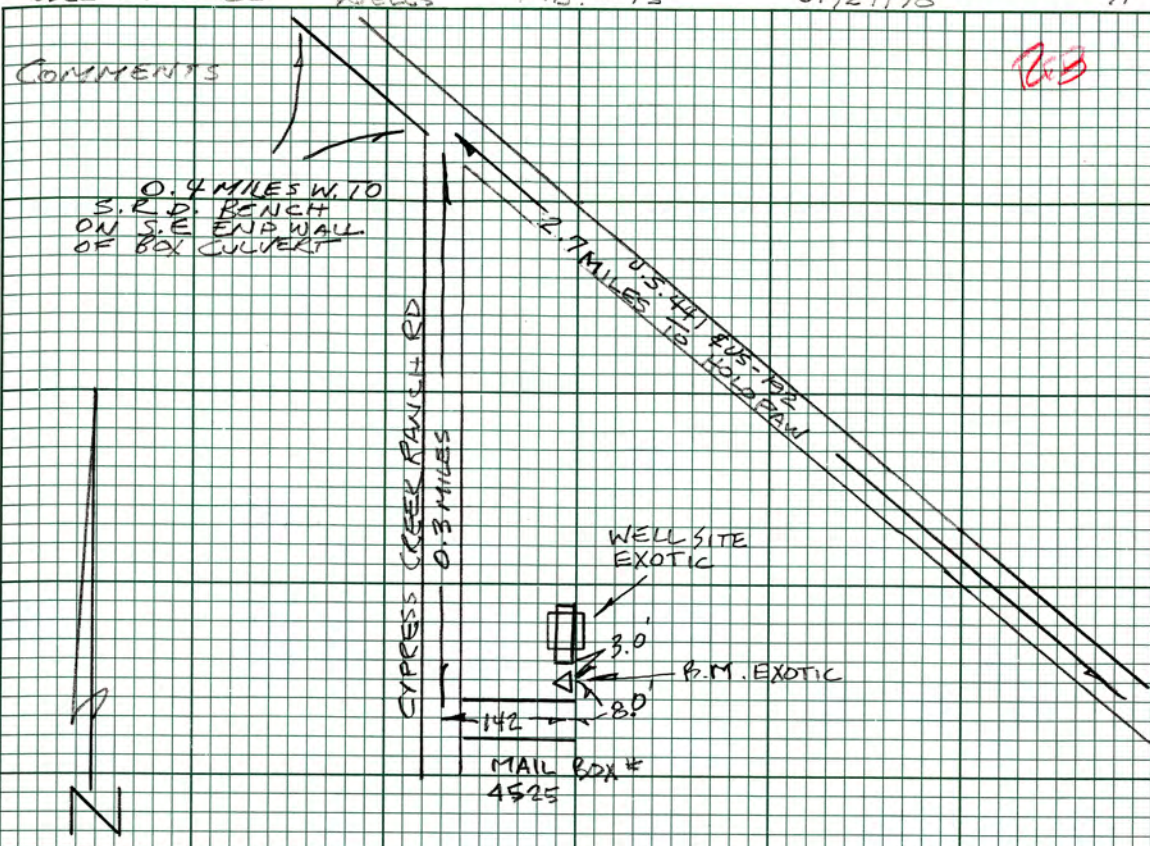
STA	+	#1	-	ELEV.	B.M. ELEV
B.M.					73.69
	4.38 2.00	78.07			
T.P.			4.12 5.14	73.95	
	4.50 2.76	78.45			
T.P.			4.77 2.47	73.68	
	4.48 2.78	78.16			
T.P.			4.79 2.48	73.37	
	4.23 3.03	77.60			
TP			4.30 2.96	73.30	
	4.78 2.48	78.08			
TP			4.18 3.08	73.90	
	4.49 2.77	78.39			
T.P.			5.00 2.26	73.39	
	3.32 3.04	76.71			

CONT'D ON PG-74

COMMENTS

B.M. IS A S.R.D. BRASS DISK SET ON S. SIDE SE 1/4 192441
ON W. END OF HEAD WALL 3.1 MILES W. OF THE
INTERSECTION OF HOIOPAW ELEV. 73.63 IS STAMPED
ON DISK.

STA	CONT'D. FROM PG-70 #	PG-70 #1	ELEV.	B.M. ELEV
T.P.	4.65 2.61	76.71	4.72 2.54	71.99
	4.65 2.61	76.64		
T.P.			4.52 2.74	72.12
	4.98 2.28	77.10		
T.P.			4.78 2.48	72.32
	4.33 2.93	76.65		
T.P.			4.61 2.65	72.04
	3.87 3.39	76.65 75.91		
B.M.			3.69 3.57	72.22 72.96
RETURN LEVELS				
B.M.				72.22 72.96
	3.57 3.69	75.79 76.55		
CONT'D. ON PG-72				



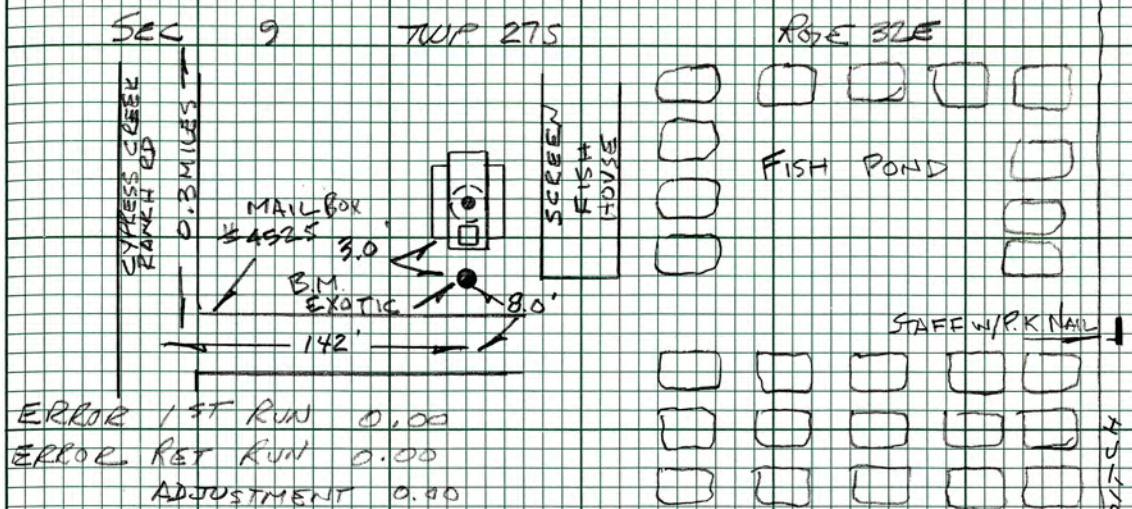
B.M. EXOTIC 1998 IS A 1/4" X 18" I. PIPE W/ S.F.W.M.D. ALUM DISK. TO REACH FROM THE INTERSECTION OF US-441 & US-192 @ HOTOPAW GO W. ON U.S. 441 & U.S. 192 3.1 MILES TO CYPRESS CRK RD. ON S. LY SIDE. THEN GO S. ON CYPRESS RD 0.35 MILES TO A DRIVE TO EAST, MAIL BOX # 4525 AND STATION LOCATION. STATION IS 1' E OF THE C OF CYPRESS CRK. RD, N OF THE C OF DRIVE AND 1' S. OF THE WELL

B.M. EXOTIC 1998 AS ABOVE

T.S.

STA	CONT'D. FROM	H.I.	BM ELEV.	BM ELEV.
T.P.	77.83	4.51	73.32	
	77.83	2.75	73.32	
	4.84			
	2.42			
T.P.	74.33	4.52	73.64	
	74.33	2.74	73.64	
	4.84			
	2.42			
T.P.	74.65	4.57	73.91	
	74.65	2.69	73.91	
	4.04			
	3.22			
B.M.		4.26	73.69	73.69
		3.00	73.69	
	LEVELS TO WELL			
B.M.				72.22
	4.26			
	3.00			
WELL		1.08		75.40
		6.18		
STAFF		5.08		71.40
		2.18		
B.M.		4.26		72.22
		3.00		

COMMENTS



B.M. S.R.D. BRASS DISK ON S. SIDE OF U.S. 441 @ US-192
 3.1 MILES W. OF THE INTERSECTION OF US 441 & US 192
 (3) HOLLOW S.R.D. DISK IS ON THE WEST END OF
 LEADWALL AND ELEV. IS STAMPED 73.69

B.M. EXOTIC 1998 PG-71

WELL EXOTIC TOP OF 3/4" PLYWOOD PLAT FORM OF RECORDER.
 ELEV. MARK IS A MAGIC MARKER SQ. W/AN X ON THE
 W. LY SIDE OF ACCESS HOLE IN THE PLATFORM

STAFF TOP OF P.K. NAIL SET ON W. SIDE OF STAFF
 ON S. LY SIDE OF FACE OF STAFF @ 66.00'

B.M. EXOTIC 1998 PG-71

Survey Monument BenchMark Database Search

Designation	Exotic	Latitude	
County	Osceola	Longitude	
Quad	Holopaw	Monument	Sfwmd
Project	Osceola county wells	Year Set	1998
S/T/R	9 26 32	Type	V
Status		Stamping	bm exotic 1998
NAD 1927		Party Chief	Art hollin
N:		FB	15
E:		Pg	71
Adjustment		NGVD 1929	
NAD 1983		Elevation	72.22
N:		Order	3
E:		Class	
Adjustment		NAVD 1988	
Order		Elevation	
Class		Order	
		Class	

[Back](#)

BM EXOTIC 1998 IS A SFWMD ALUMINUM DISK SET IN A 1 1/4" X 18" PIPE. TO REACH FROM THE INTERSECTION OF U.S. 441 AND U.S.192 AT HOLOPAW, GO WEST ON U.S. 44 AND U.S. 192 FOR 2.7 MI TO CYPRESS CREEK RANCH ROAD, THEN GO SOUTH ON CYPRESS CREEK RANCH ROAD FOR 0.3 MI TO MAIL BOX #4525 AND STATION LOCATION. STATION IS LOCATED 142 FT EAST OF THE CENTERLINE OF THE ROAD, 8 FT NORTH OF THE CENTERLINE OF THE DRIVEWAY, AND 3 FT SOUTH OF THE WELL " EXOTIC."

SOUTH FLORIDA WATER MANAGEMENT DISTRICT

COUNTY <u>OSCEOLA</u>			PROJECT <u>OSCEOLA 6 WELLS</u> ALIGATOR LAKE DRAW DOWN	
SECTION <u>9</u>	TOWNSHIP <u>29S</u>	RANGE <u>32E</u>	NAME, NUMBER OF STATION OR SECTION CORNER <u>B. M. EXOTIC 1993</u>	
GEOGRAPHIC INDEX OF QUAD			NAME OF QUADRANGLE <u>HOLOPAW</u>	
AGENCY BY WHOM ESTABLISHED OR RECOVERED <u>S.F.W.M.D.</u>				
SURVEYOR <u>A. HOLLIN</u>		FIELD BOOK <u>15</u> PAGE <u>71</u>	DATE <u>01-29-98</u>	
HORIZONTAL DATUM: <u>TRANSVERSE MECA TOR</u>			ZONE	
VERTICAL DATUM: <u>MEAN SEA LEVEL 1929</u>				
CONTROL ACCURACY: <u>HORIZONTAL</u>		VERTICAL		
STATE PLANE COORDINATES		X	Y	EL. <u>72.22</u> ✓
TO STATION	PLANE AZIMUTH		$\Delta \theta$	DISTANCE IN FEET
LATITUDE		LONGITUDE		

DESCRIPTION

B.M. EXOTIC 1998 IS A 1 1/4" X 18" I. PIPE w/ S.F.W.M.D. ALUM. DISK. TO REACH FROM THE INTERSECTION OF U.S.-441 & US 192 @ HOLOPAW, GO WEST ON US-441 AND U.S. 192 2.7 MILES TO CYPRESS CREEK RANCH RD. THEN GO S. ON CYPRESS CREEK RANCH RD, 0.3 MILES TO MAIL BOX # 4525 AND STATION LOCATION. STATION IS 142' E OF \perp OF RD, 8.0' N. OF THE \perp OF DRIVE AND 3.0' S OF THE WELL EXOTIC.

