



RMBAKER LLC

WELL G-3608
UWI G-3608

Geology and Geophysics

8600 Oldbridge Lane
Orlando, FL 32819
mobile ph 407-733-8958

LOG STAGE EXPLORATORY

rob@rmbaker.com
www.rmbaker.com

HEADER NOTES:
SCREENED FROM 94.6 TO 98.98 FT

COMP	RMBAKER LLC	
LOC	MIAMI-DADE COUNTY	
FLD	MIAMI AREA	
CNTY	MIAMI-DADE COUNTY	
STAT	FL	
PROV	FL	
CTRY	USA	
LATI	25.684420	X
LONG	-80.284610	Y
GDAT	WGS84	HDAT
SEC		ELEV
TWP		V DAT
RGE		

ALL SERVICES:
DUAL INDUCTION
NATURAL GAMMA
ACOUSTIC TELEVIEWER

PERMANENT DATUM:
LOG MEASURED FROM: GROUND SURFACE

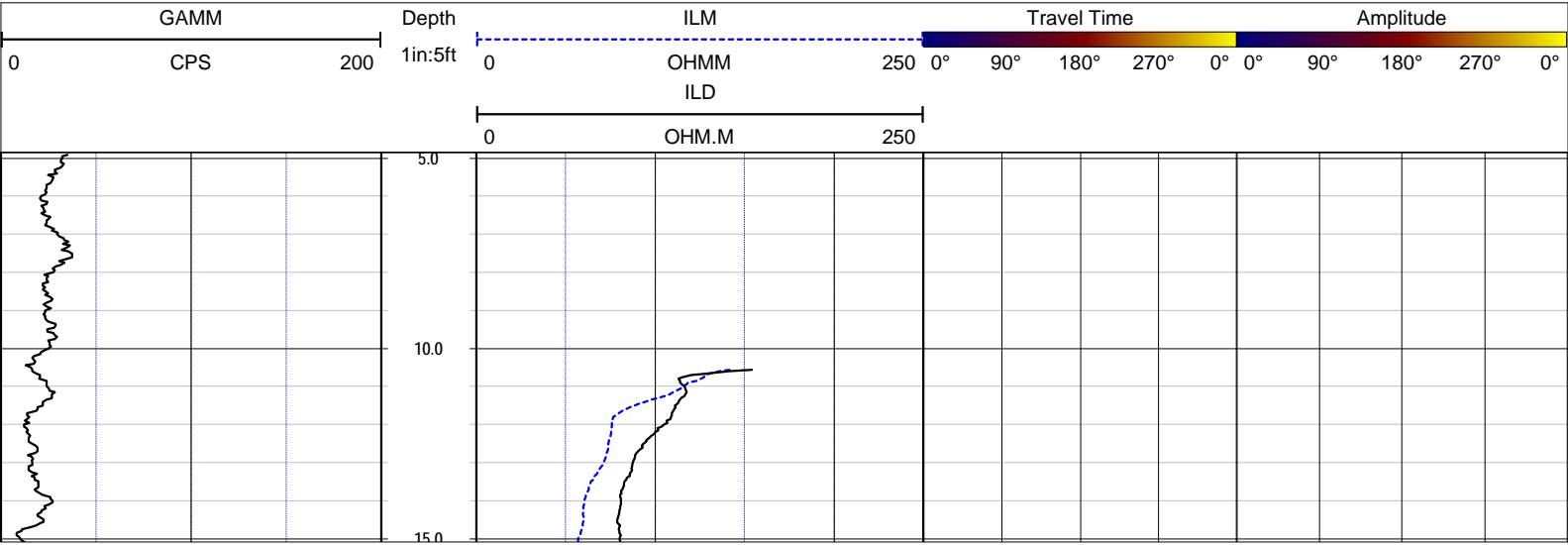
DRILLING MEASURED FROM:

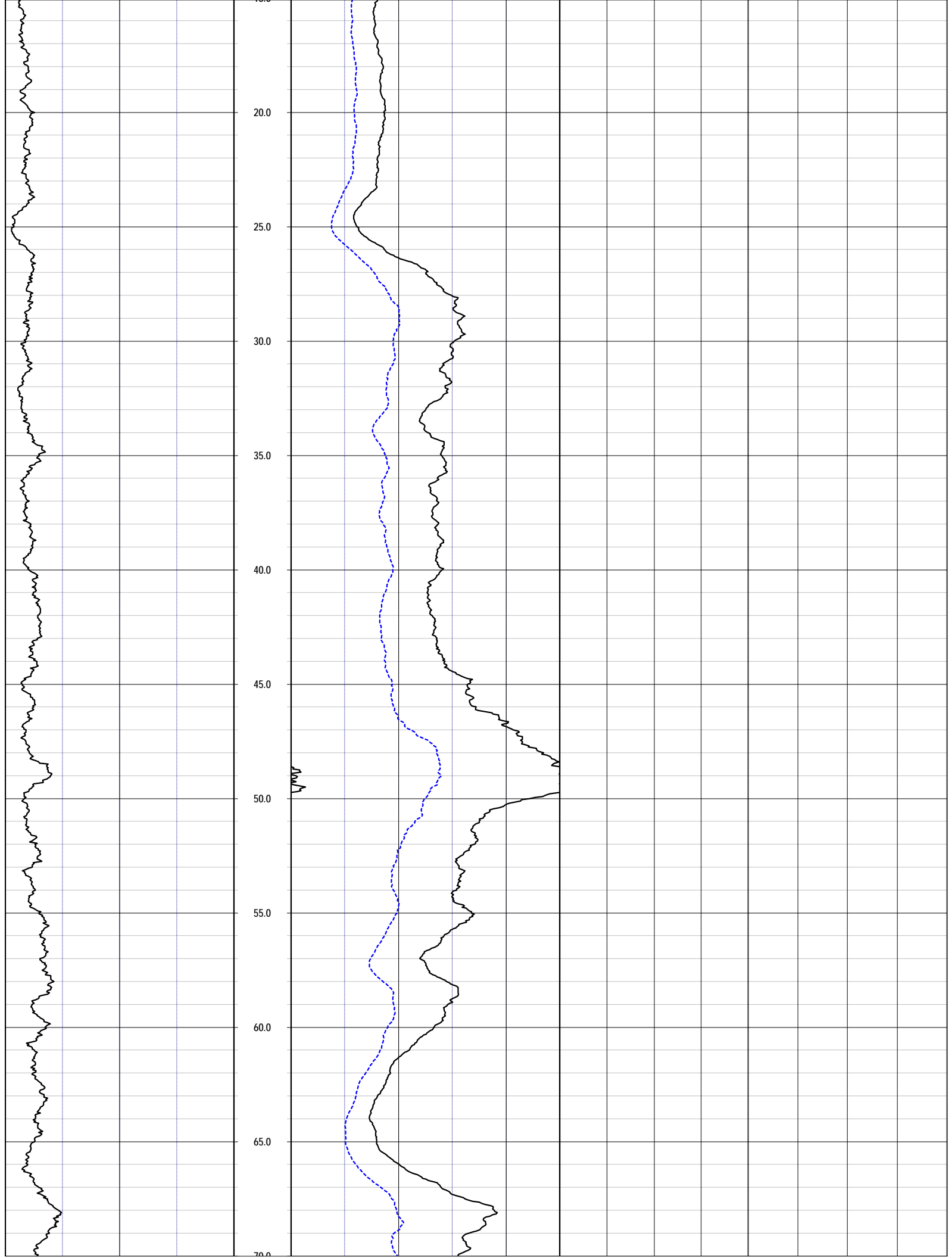
DATE	1 Jul 15	TYPE FLUID IN HOLE	WATER
RUN No	1	LOGGING SPEED (FT/MIN)	15
TYPE LOG	COMPOSITE	TROLLING DIRECTION	UP
DEPTH-DRILLER		PUMPING RATE (GPM)	N/A
DEPTH-LOGGER	98.98		
DRILLER			
RECORDED BY	RMB		
SRVC	RMBAKER LLC	API	N/A
WITNESSED BY	E. GEDDES	LIC	N/A

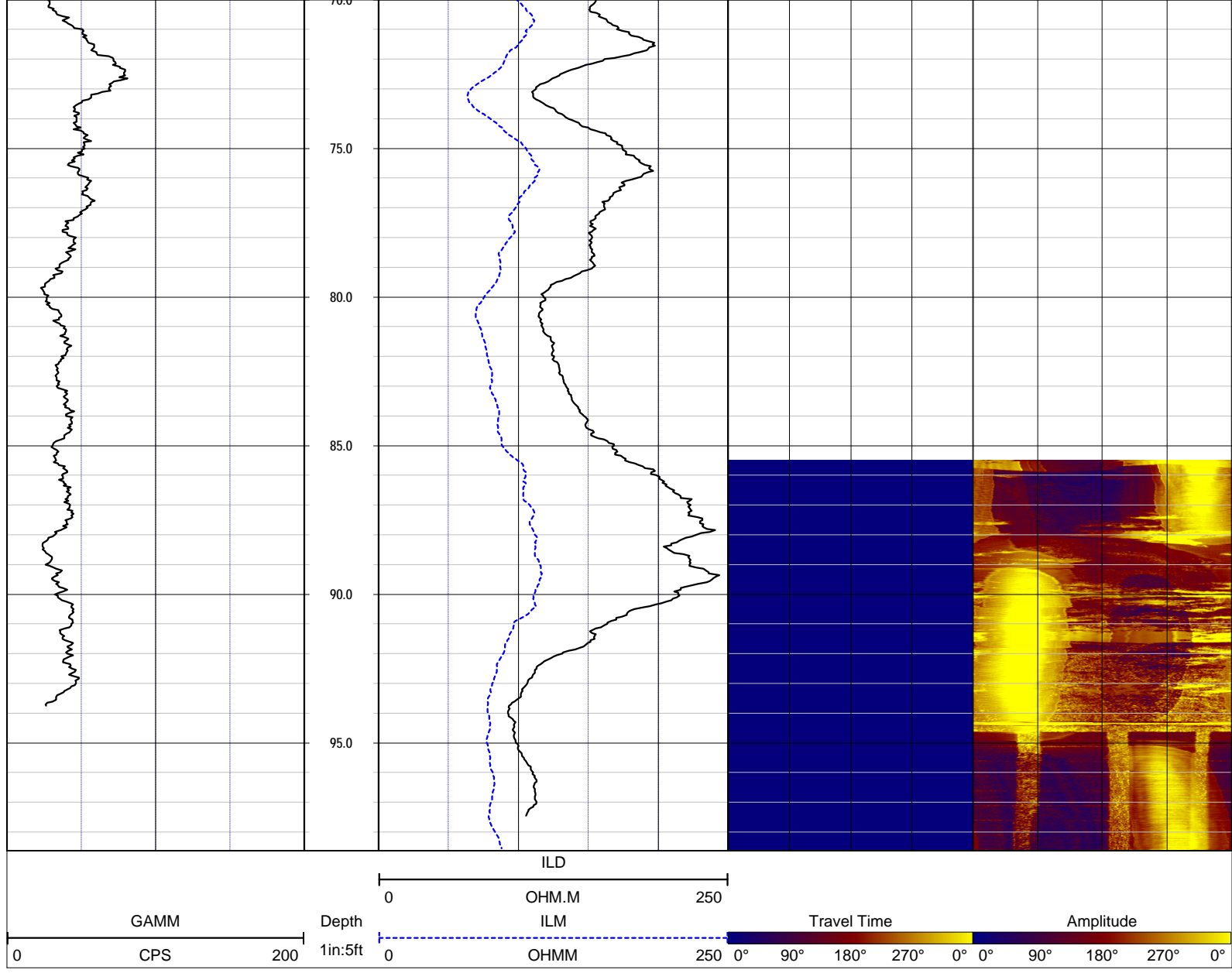
BOREHOLE RECORD		CASING RECORD					
RUN NO.	BIT	FROM	TO	SIZE	MAT.	FROM	TO
1				2	PVC	0	98.98

LOG CODES

3-arm caliper	CAL	long normal resistivity	RLN	deep induction conductivity	IDC
natural gamma (CPS)	GAMM	8 inch resistivity	R8	shallow induction conductivity	ISC
spontaneous potential	ESP	32 inch resistivity	R32	sonic interval velocity	DT
single point resistance	RES	deep induction resistivity	ILD	sonic porosity (RHG method)	SPHI
short normal resistivity	RSN	shallow induction resistivity	ILM	repeat designation	R







NOTES:

While due care has been exercised in the performance of these measurements and observations, in accordance with methodologies utilized by the general practitioner, RMBAKER LLC can make no representations, warranties, or guarantees with respect to latent or concealed conditions that may exist, which may be beyond the detection capabilities of the methodologies used, or that may extend beyond the areas and depths surveyed. The geophysical well logs show subsurface conditions as they existed at the dates and locations shown, and it is not warranted that they are representative of subsurface conditions at other locations and times. If, at any time, different subsurface conditions from those observed are determined to be present, we must be advised and allowed to review and revise our observations if necessary.

Certificate of Authorization GB 458

END OF LOG