

Company SFWMD  
Well Golden Ox Site 6 PW  
Field Golden Ox  
County Hendry  
State/Prv Florida

Permanent Datum T-46 R-32  
Log Measured From  
Log Measured From  
Elevation  
K B  
D L F  
O L

Date  
Run Number  
Depth (ft)  
Bottom Logged Interval  
Open Hole Size  
Density / Viscosity  
Max. Recorded Temp  
Estimated Cement Top

1330 3/1/05  
1430 3/1/05  
130'  
128'  
7.875"  
SURFACE  
NA/NA  
na  
NA

Location  
Revised By  
Wired  
Run Number  
C/O  
Sonic Record  
Surface String  
Production String  
Index No

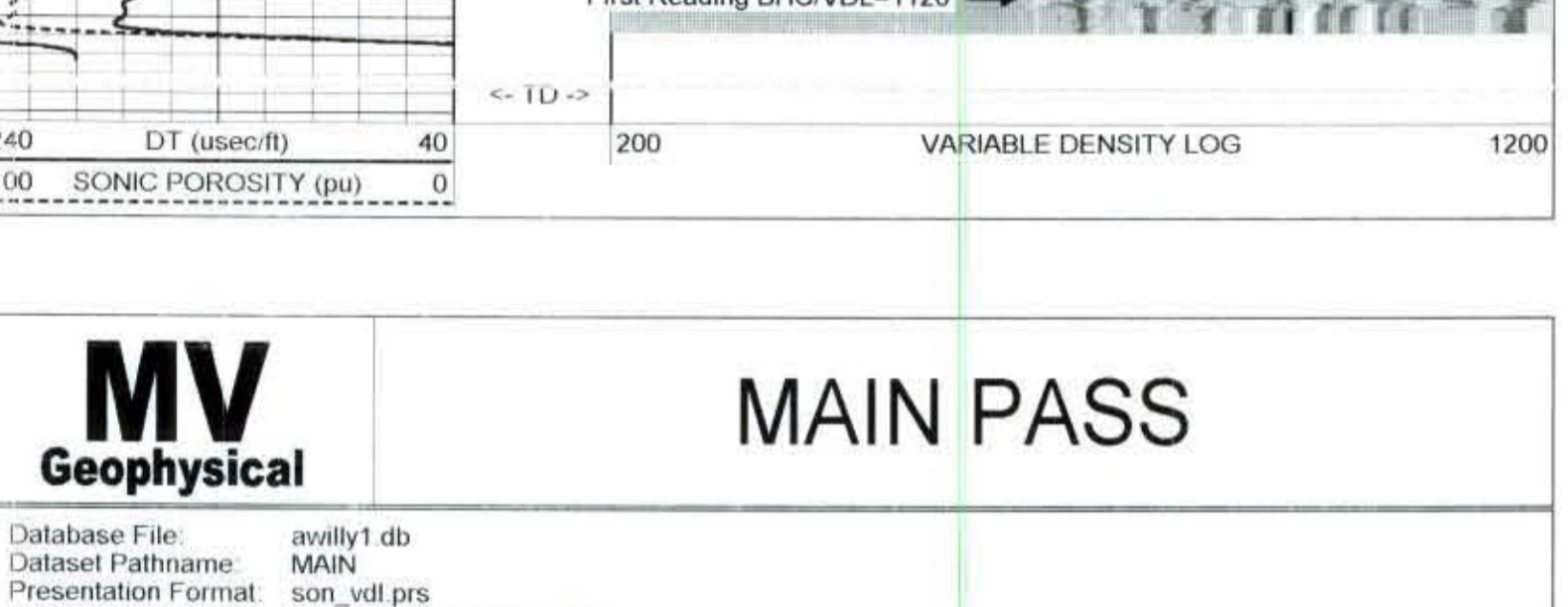
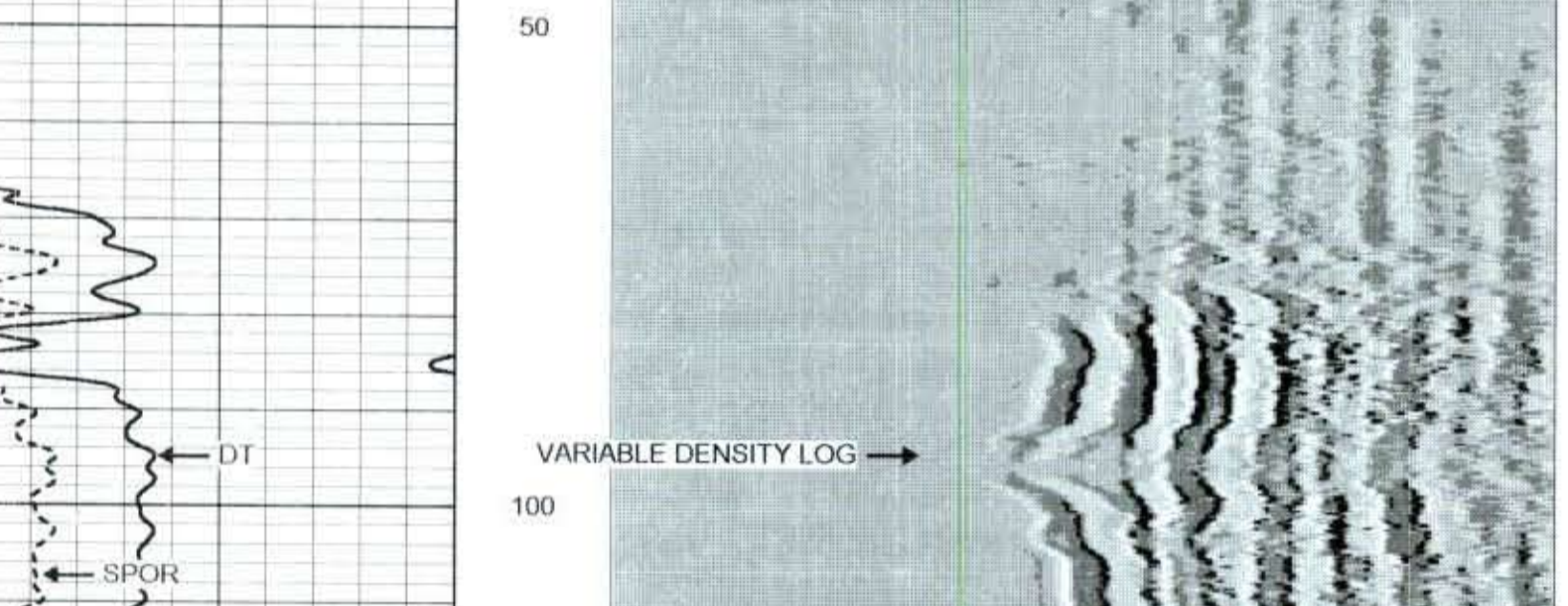
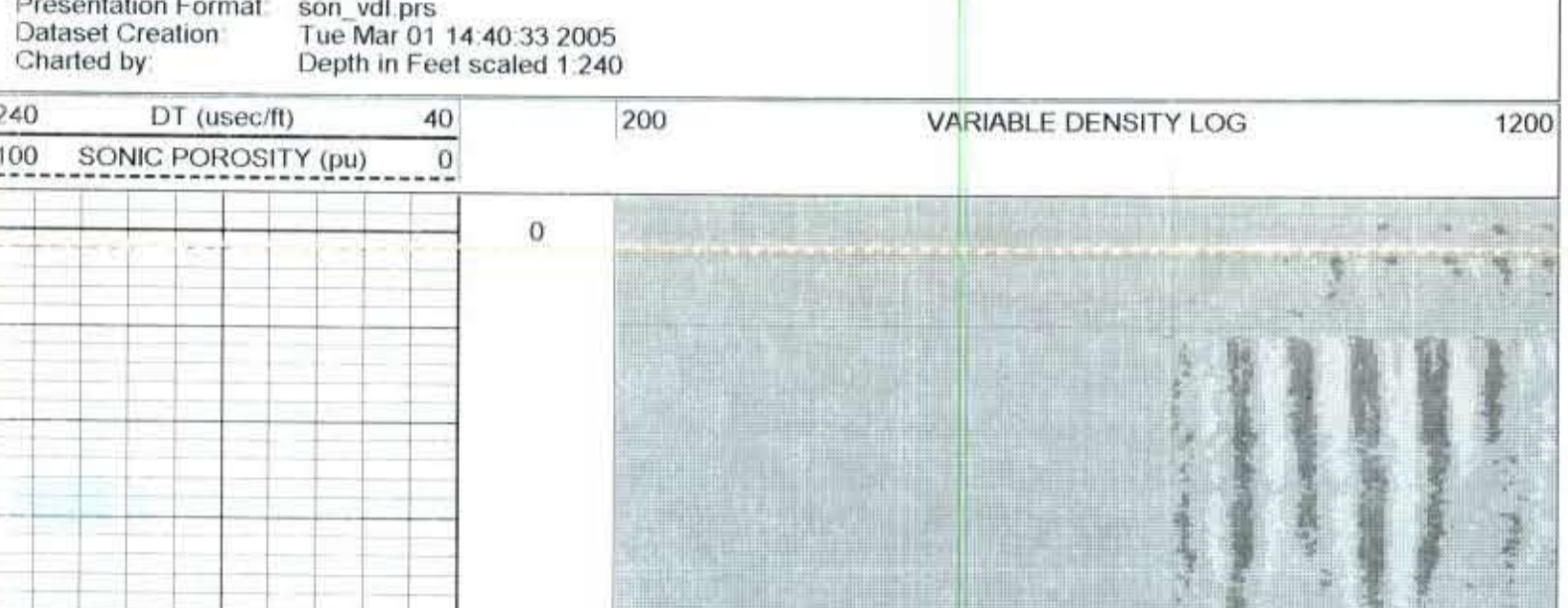
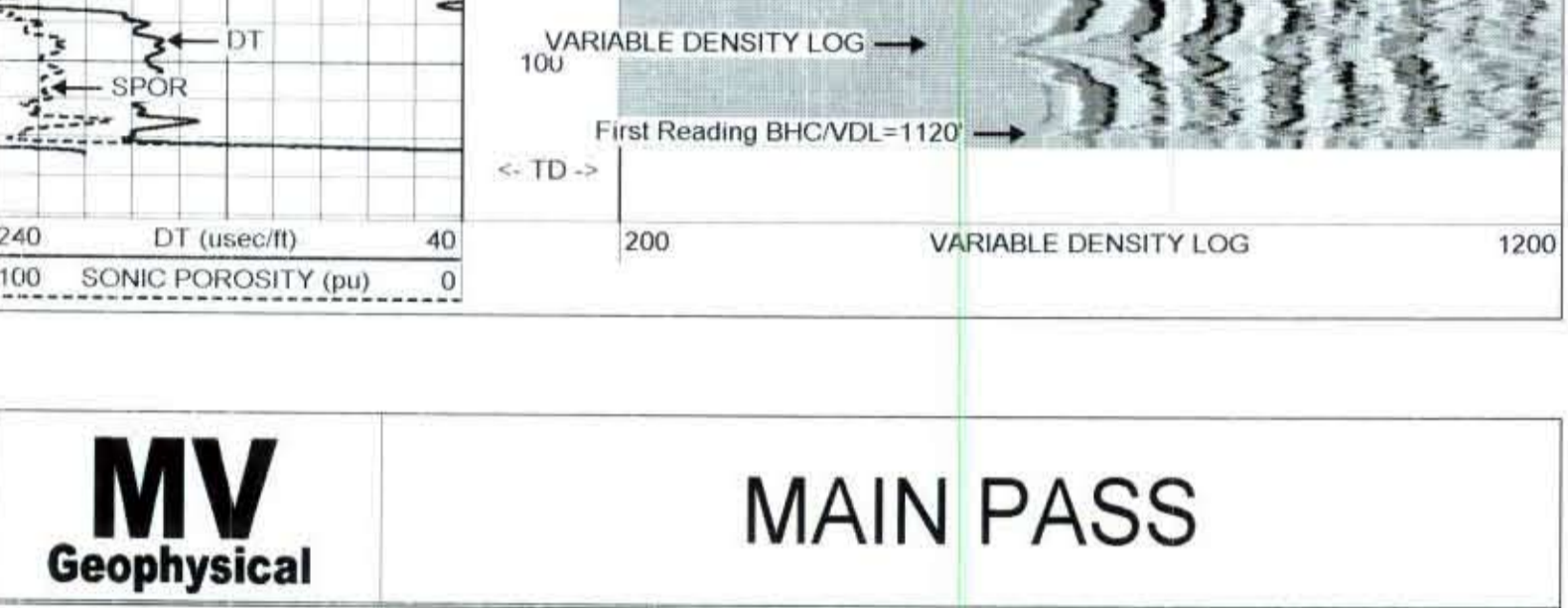
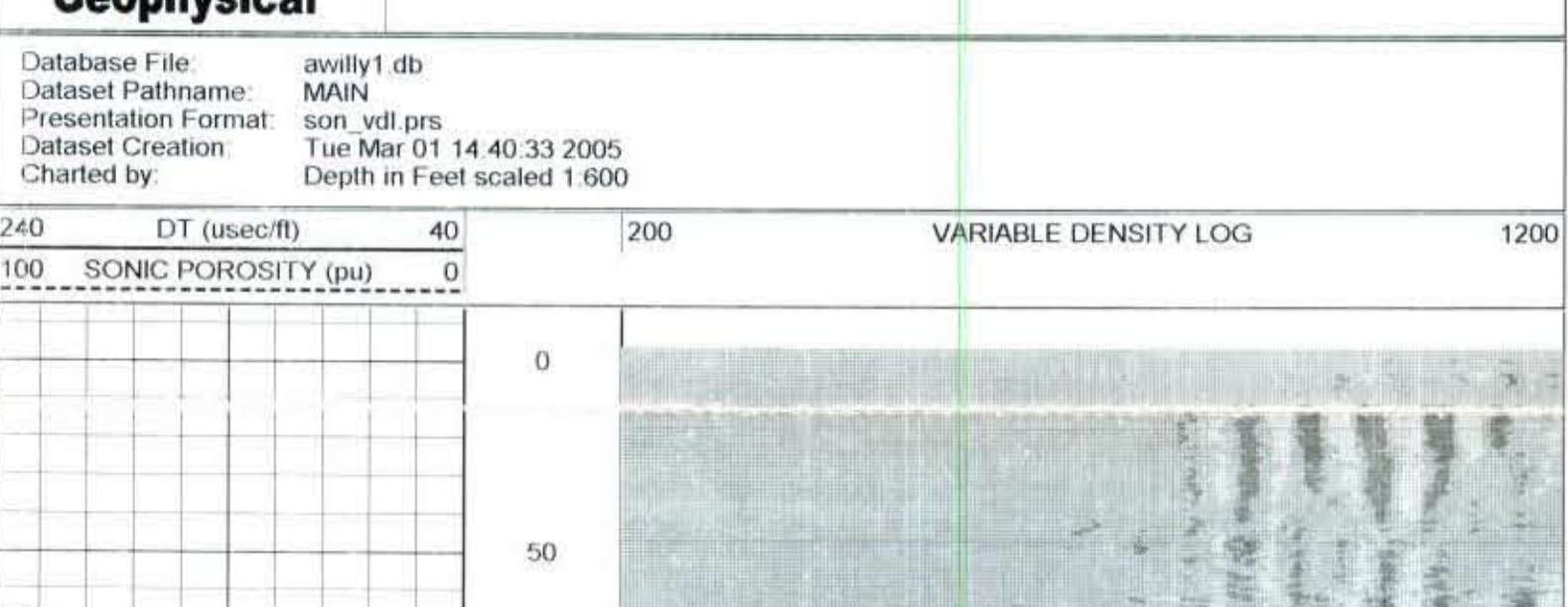
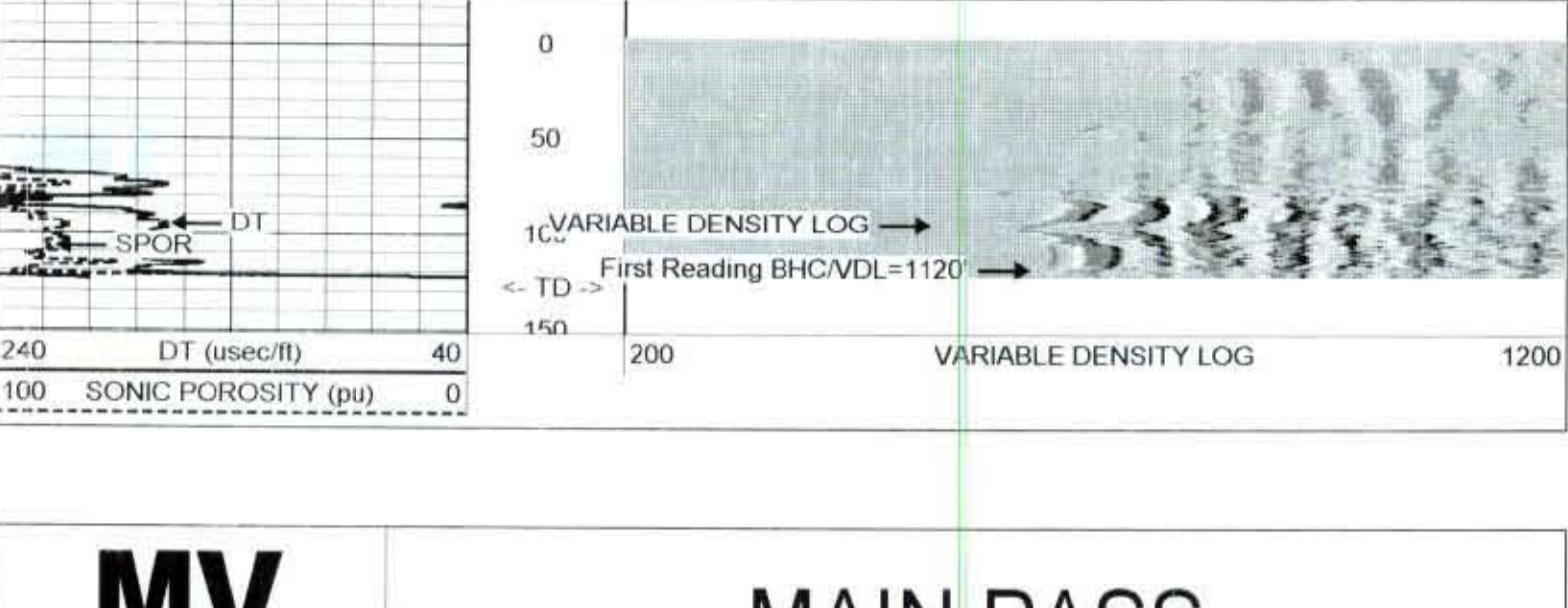
1430 3/1/05  
S. Miller  
J. (SFWMD)  
7.875"  
SURFACE  
130'  
1.28" 99HR  
WVF1  
T9P  
Bottom

All interpretations are opinions based on inferences from electrical or other measurements and we cannot and do not guarantee the accuracy or correctness of any interpretation, and we shall not, except in the case of gross or willful negligence on our part, be liable or responsible for any loss, costs, damages, or expenses incurred or sustained by anyone resulting from any interpretation made by any of our officers, agents or employees. These interpretations are also subject to our general terms and conditions set out in our current Price Schedule.

Comments

Sonic Porosity was run on a Limestone Matrix (=47.5)

Drilling Contractor: Advanced Well Drilling



Dataset: run1/pass8  
Total Length: 16.00 ft  
Total Weight: 127.00 lb  
O.D.: 3.50 in

**MV Geophysical** DUAL INDUCTION LOG L3 / SP

Company: SFWMD  
Well: Golden Ox Site 6 Production Well  
Field: Golden Ox  
County: Hendry  
State/Prv: Florida

Location: T-46 R-32  
Elevation: 146 R-32

Log Measured From: Ground Level  
Datum: Ground Level  
Date: 1-JAN-2005

Run Number: 01E  
Depth: 126'  
Bottom Logged Interval: SURFACE

Estimated Cement Top: NA  
Estimated Cement Bottom: 13.4631765  
Time Loggers on Bottom: F1 Layers  
Equipment Number: FVCS-1  
Manufacturer: J. STRAINCO  
Run Number: 7 875  
Bit Size: SURFACE  
Wells: Hilly (A/D)  
Wellbore: Long Record

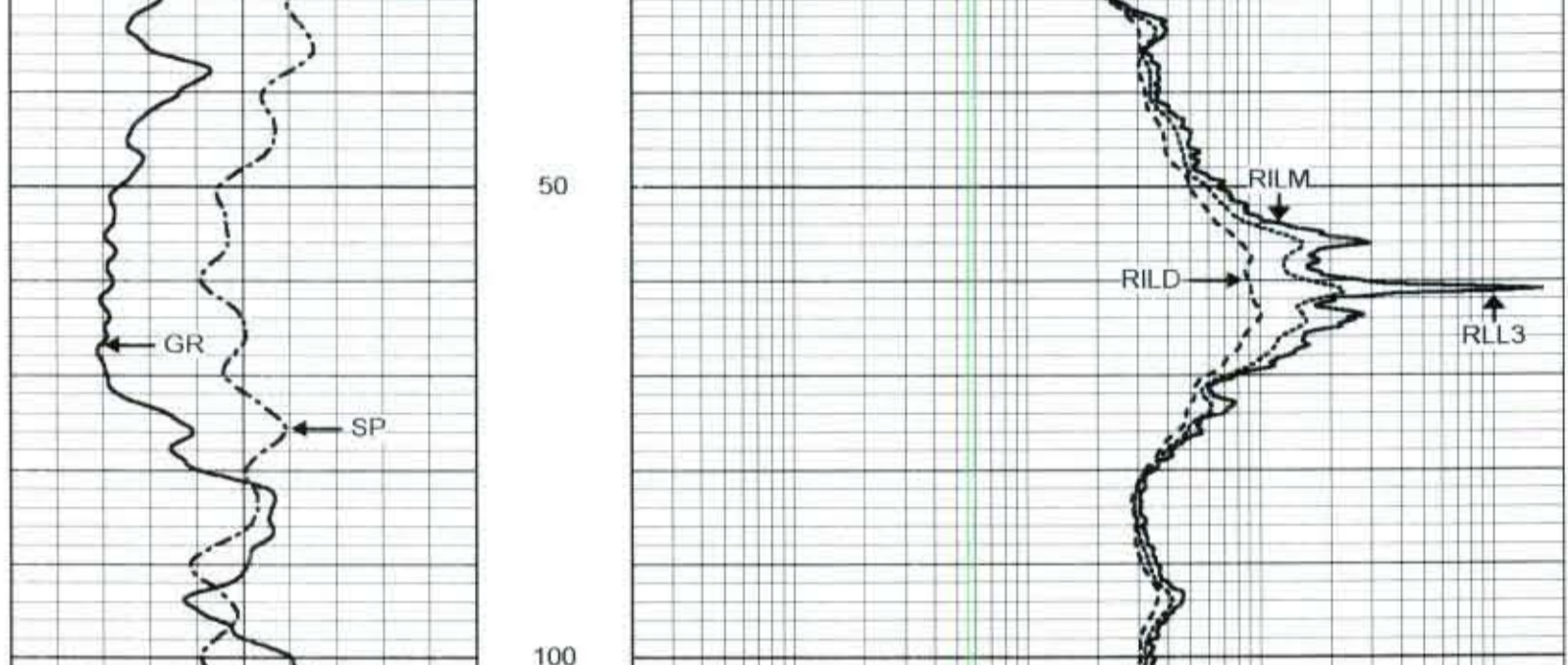
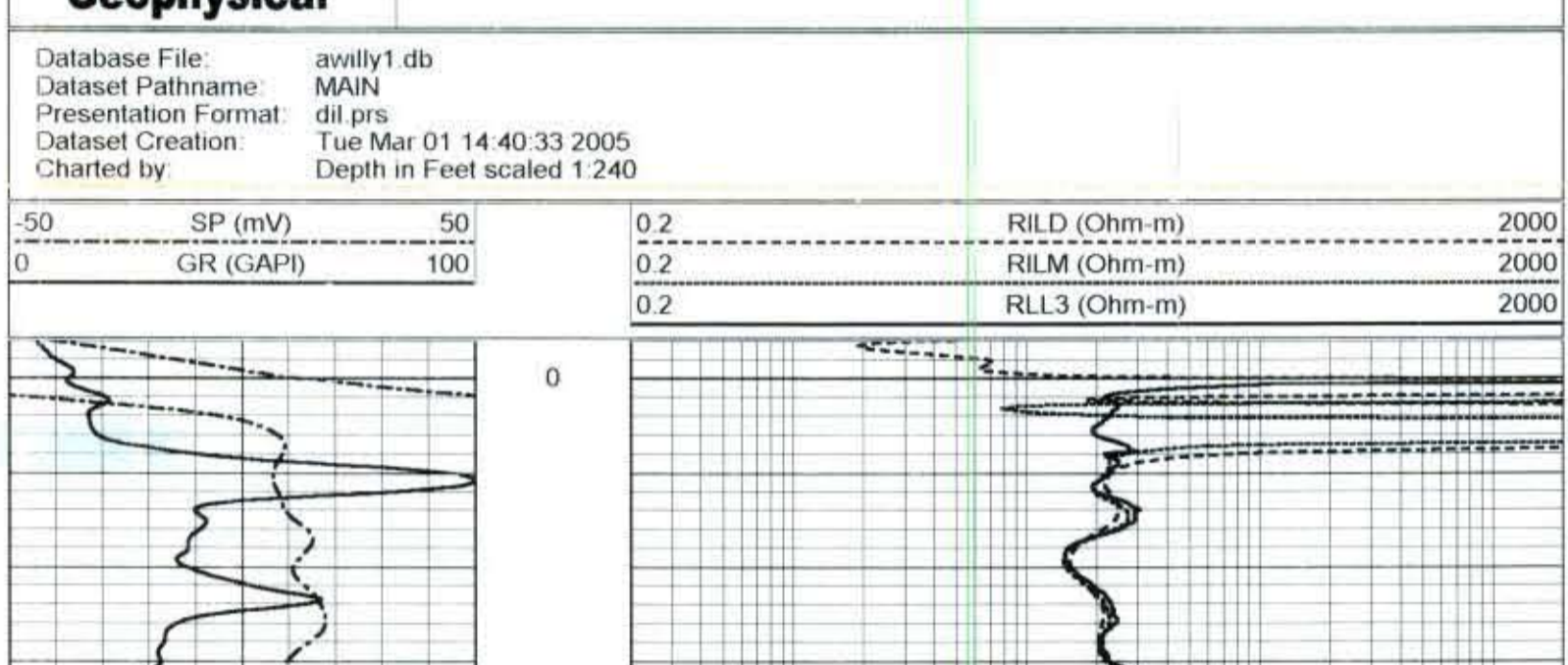
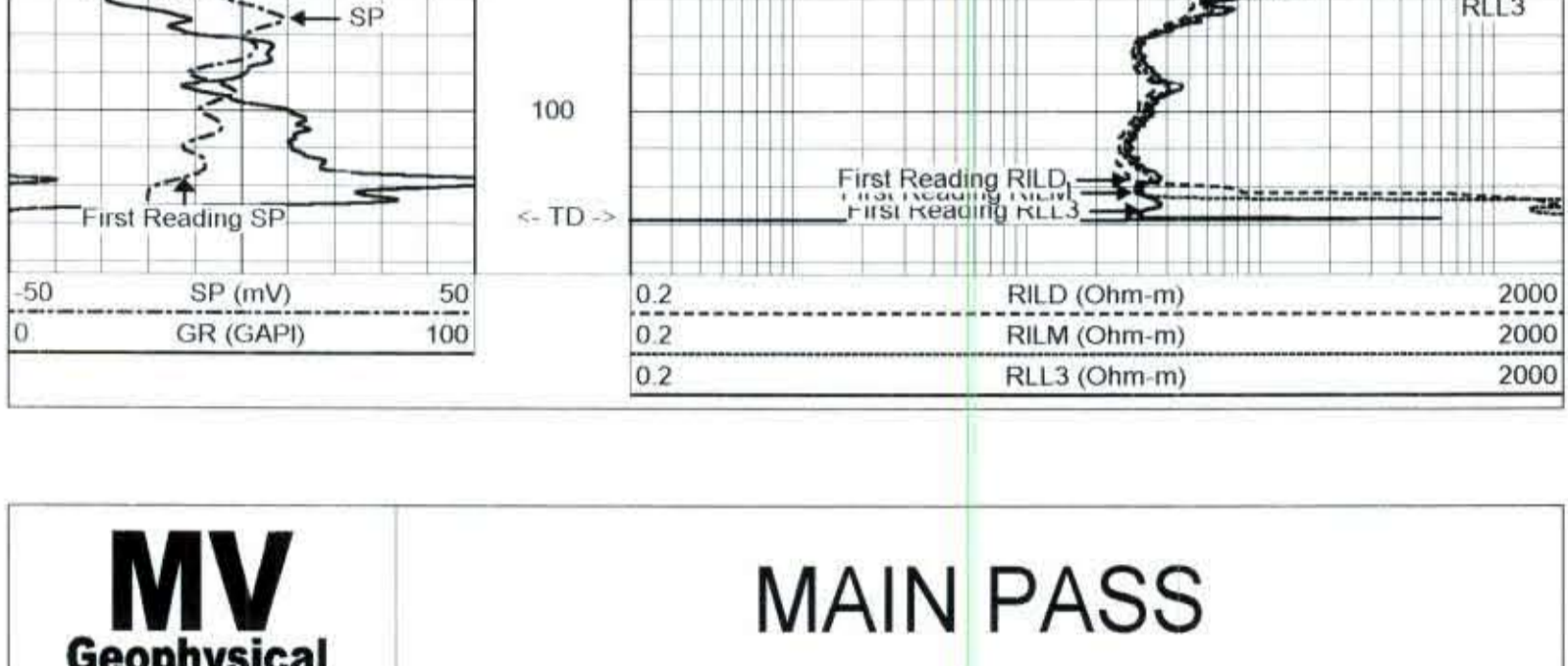
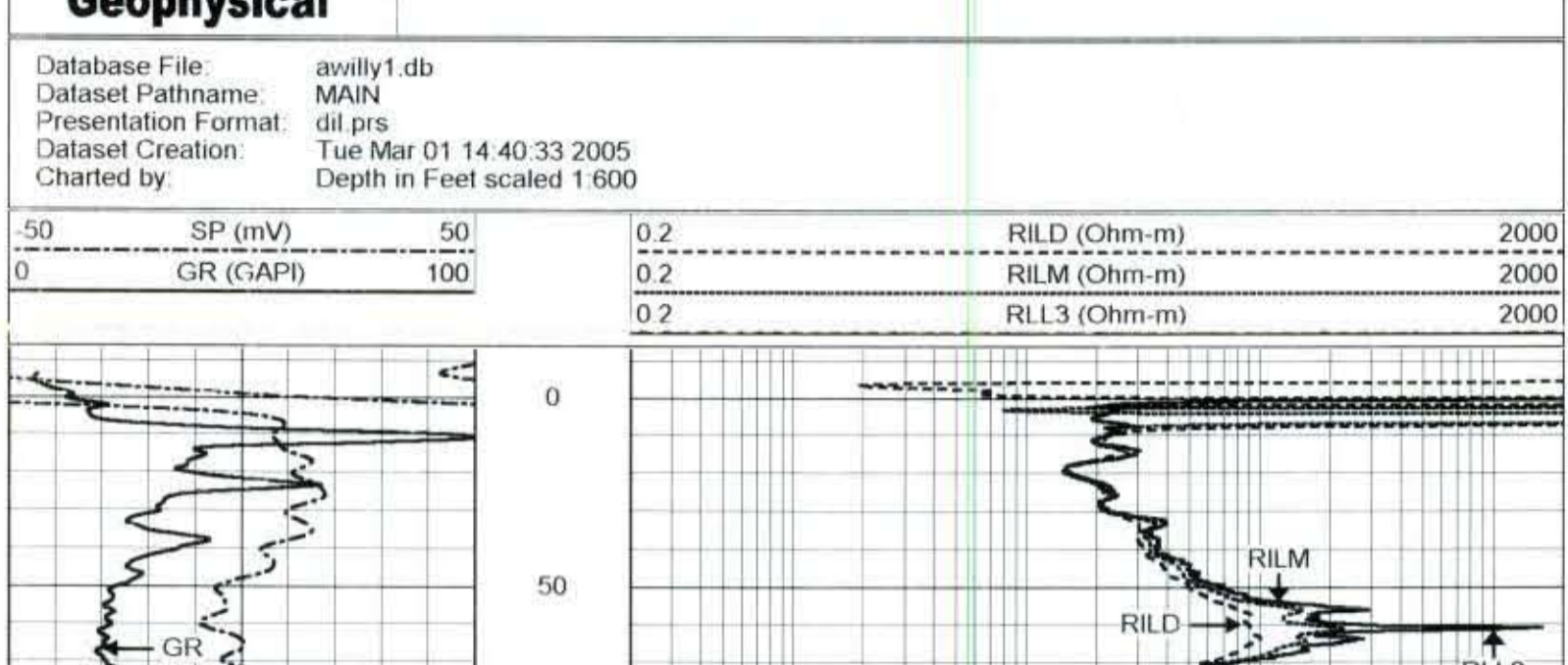
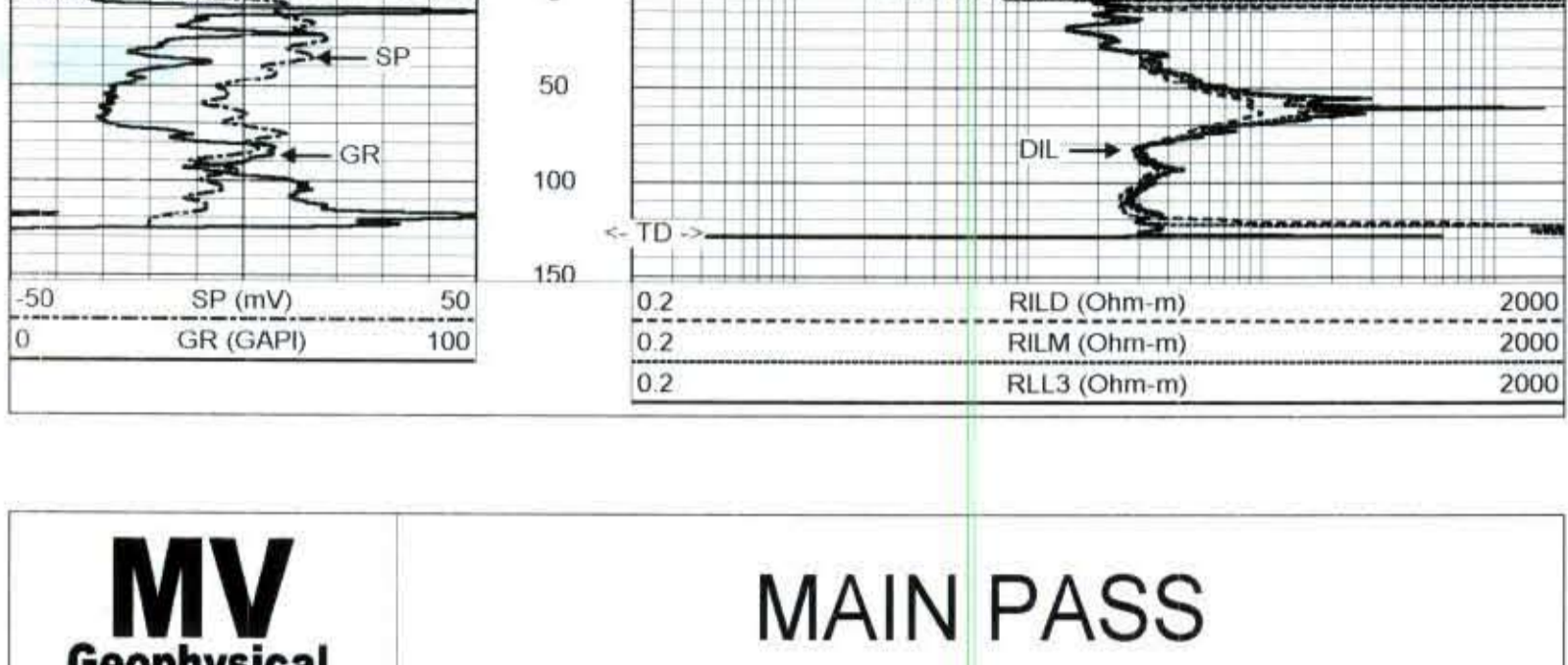
Charted by: [Blank]

All interpretations are opinions based on inferences from electrical or other measurements and we cannot and do not guarantee the accuracy or correctness of any interpretation, and we shall not, except in the case of gross or willful negligence on our part, be liable or responsible for any loss, costs, damages, or expenses incurred or sustained by anyone resulting from any interpretation made by any of our officers, agents or employees. These interpretations are also subject to our general terms and conditions set out in our current Price Schedule.

Comments:

Rm=9.02 ohm-m @ 72.9 degF  
Rmf=7.21 ohm-m @ 72.7 degF  
Rmc=11.22 ohm-m @ 72.6 degF

Drilling Contractor: Advanced Well Drilling



Dual Induction Calibration Report

Serial-Model: 5390-R  
Surface Cal Performed: Mon Feb 24 16:52:46 2003  
Downhole Cal Performed: Tue Mar 01 13:44:51 2005  
After Survey Verification Performed: Tue Mar 01 14:00:28 2005

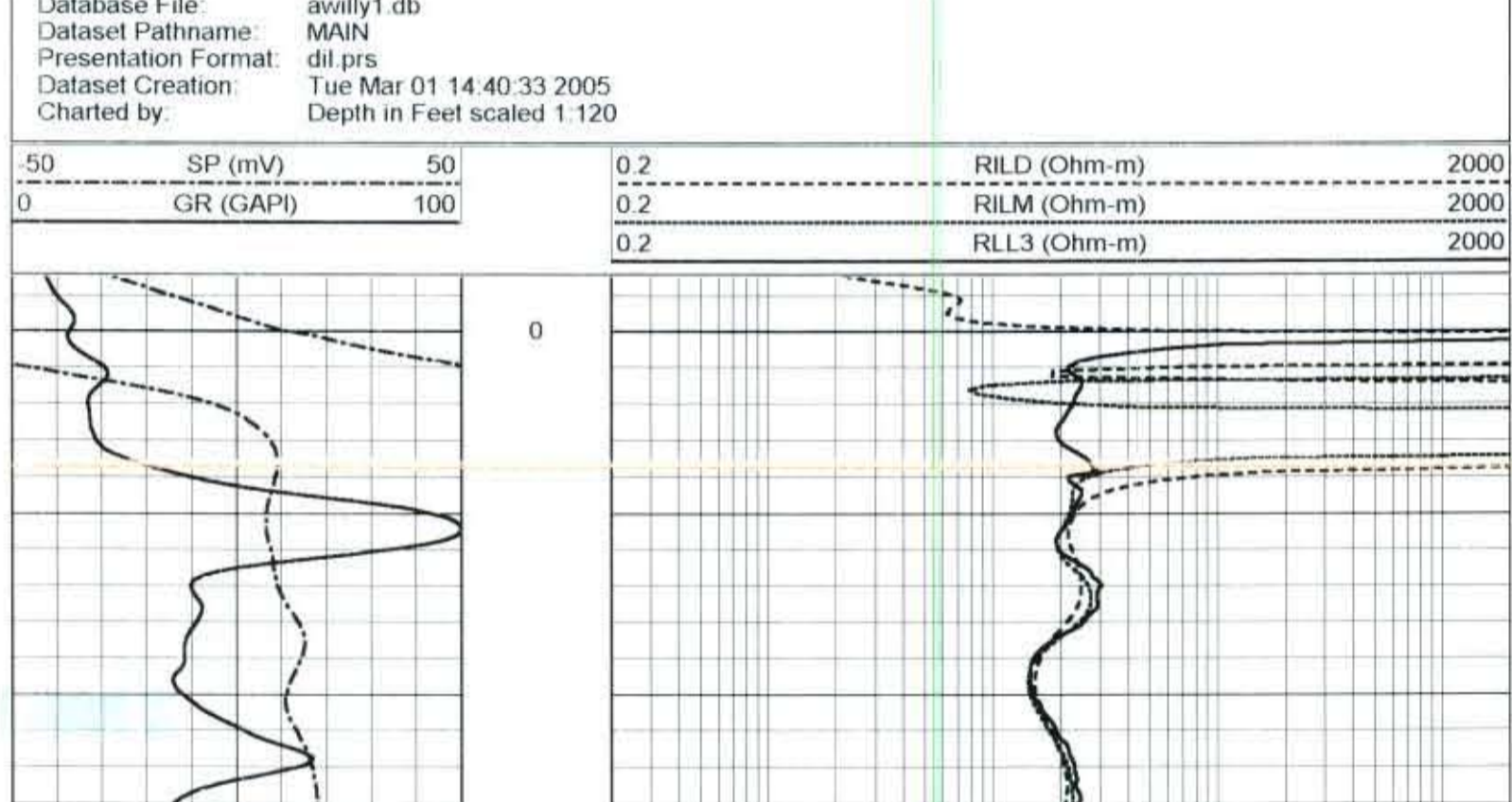
Surface Calibration				References				Results	
Loop	Air	Loop	Readings	Air	Loop	References	m	b	
Deep	0.041	0.637	V	0.000	400.000	mmho-m	670.900	-27.223	
Medium	-0.006	0.700	V	0.000	464.000	mmho-m	656.366	4.251	
Internal:				Zero				Results	
Deep	0.011	0.647	V	0.000	400.000	mmho-m	628.552	-6.783	
Medium	-0.011	0.749	V	0.000	464.000	mmho-m	610.612	6.720	

Downhole Calibration				References				Results	
Internal:	Readings	References	Results	m	b				
Deep	-19.328	398.633	mmho-m	-19.983	406.966	mmho-m	1.022	-0.240	
Medium	12.740	488.666	mmho-m	-2.972	495.796	mmho-m	1.046	-16.324	
Shallow	2.501	0.023	Ohm-m	494.500	2.000	Ohm-m	198.755	-2.644	

After Survey Verification				Targets				Results	
Internal:	Readings	Targets	Results	m'	b'				
Deep	-21.031	397.307	mmho-m	-19.328	398.633	mmho-m	1.022	-0.240	
Medium	10.897	487.195	mmho-m	12.740	488.666	mmho-m	1.046	-16.324	
Shallow	494.161	1.890	Ohm-m	494.500	2.000	Ohm-m	1.000	0.110	



Dataset: run1/pass5  
Total Length: 20.90 ft  
Total Weight: 345.00 lb  
O.D.: 4.00 in