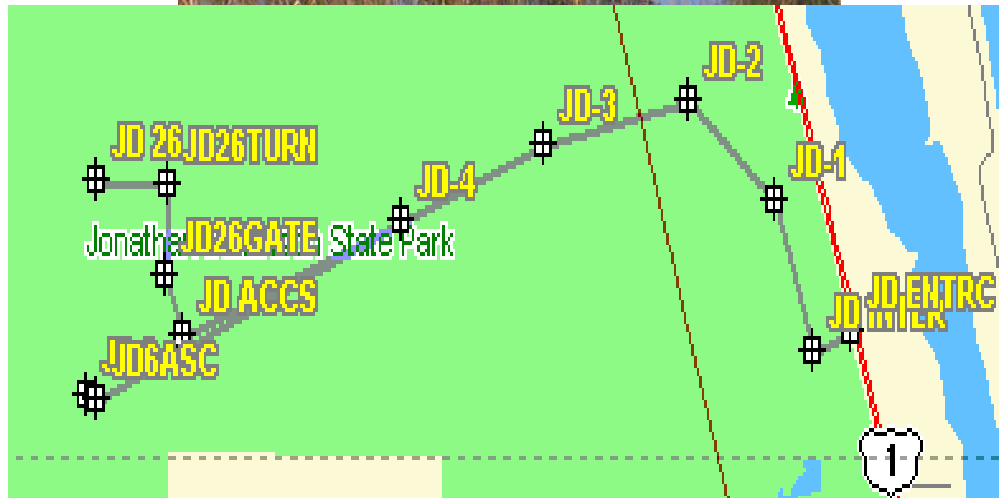


General Site Information

Site Name: JD6
Site Lat/Long: 27 00 07.1999 -80 08 46.4399
Data Collection Type: MANUAL



SITE SPECIFICS

ACCESS TYPE:	REMOTE
REPORTING TYPE:	NONE
DUE DATE:	MONTHLY
DIRECTIONS FROM SFWMD F.O.C. (W.P.B.)	
EAST ON BELVEDERE RD. 2.66 MILES TO JOG RD. NORTH ON JOG RD. 1.30 MILES TO OKEECHOBEE RD. EAST ON OKEECHOBEE 0.91 MILES TO FL. TURNPIKE. NORTH ON FL. TURNPIKE TO PORT ST. LUCIE BLVD EXIT. EAST ON PORT ST. LUCIE BLVD. 4.32 MILES TO US-1. SOUTH ON US-1 2.05 MILES TO JENSEN BCH. BLVD. EAST ON JENSEN BCH. BLVD. 1.21 MILES TO GATE ON LEFT.	

STA	#	BLSV	BLSV
BM	ESTABLISHED ELEV. ON WELLS #1071, #1072, & #1093	12.54	
	4.43 (5.23)	16.97	
TP	9.53 (10.107)	19.59	6.97 (6.68)
TP	0.61 (13.06)	13.39	6.81 (6.85)
TP	6.06 (7.00)	12.32	8.73 (10.93)
TP	4.91 (3.96)	12.14	8.89 (8.68)
TBM			0.13
			12.01
TBM	0.83		12.97
TP	3.93 (3.73)	13.44	3.63 (11.03)
TP	5.45 (3.22)	12.26	0.63 (13.04)
TP	3.19 (12.47)	13.38	8.07 (11.53)
TP	4.91 (3.86)	11.03	7.11 (4.55)
TP	4.79 (8.88)	10.69	5.17 (8.48)
TP	5.45 (8.22)	10.81	5.33 (8.34)
TP	6.32 (7.34)	11.13	5.95 (7.71)
TBM			3.63 (10.09)
			7.55
TP	4.24 (9.43)	11.65	3.77 (3.90)
TP	7.19 (6.47)	14.40	4.44 (9.22)
TP	3.54 (10.13)	14.53	3.36 (10.31)
TP	5.35 (8.30)	13.18	11.75 (11.31)
TBM			8.41 (11.26)
			15.77

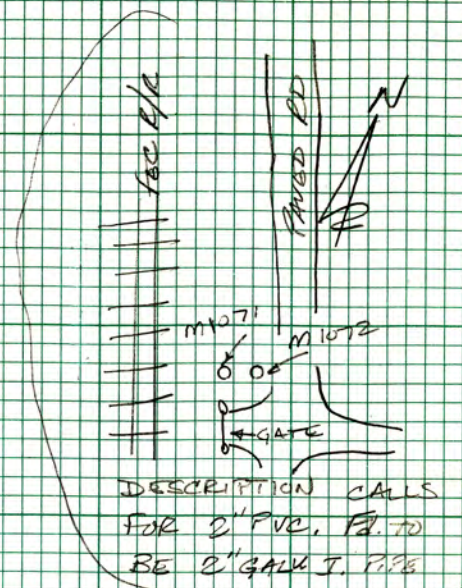
RE-TURN ON PG. 23

USCEGS ANN. N 34

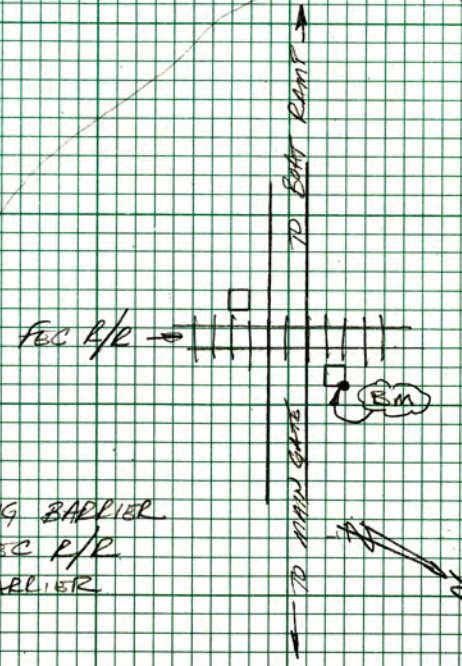
TOP S. SIDE OF WELL #1071

TOP S. SIDE OF WELL #1072

TOP N. SIDE WELL #1093



SEC 11E12 TWP 40S RGE 42E



N.E. COR. OF CONC. BASE OF E/R XING BARRIER.
@ INT. OF ROAD TO BOAT RAMP & FEC R/R.
IN SONATHAN DICKINSON PARK. BARRIER
ON E. SIDE OF TRACKS.

STA	+	#1	-	826V	ADJ.
TBM	9.72 (12.95)	16.49		15.77	15.76
TP	4.77 (3.99)	15.62	(5.64) (8.91)	10.85	
TP	3.30 (10.31)	10.57	8.41 (11.26)	7.21	
TP	5.30 (8.35)	12.72	3.15 (10.51)	7.42	
TP	4.33 (5.34)	10.20	6.85 (6.82)	5.97	
TP	4.91 (2.75)	10.72	4.35 (9.27)	5.91	
TP	6.23 (9.44)	11.19	5.77 (7.90)	4.95	
TP	7.19 (6.47)	13.17	5.20 (9.45)	5.28	
TP	5.58 (8.08)	15.06	3.69 (9.92)	9.48	
TP	4.68 (8.98)	14.74	5.00 (8.66)	10.06	
TP	4.46 (5.27)	15.52	3.62 (10.05)	11.12	
TP	4.07 (5.62)	15.19	4.39 (9.28)	11.14	
TP	3.54 (10.13)	15.63	3.04 (10.63)	12.14	
TP	4.94 (3.72)	16.24	4.39 (9.28)	11.30	
TP	7.75 (11.92)	16.20	7.79 (11.92)	8.45	
BTD			3.44 (10.02)	12.56	(12.54)

N.B. COR. CONC. (SEE PG. 22)

M34
ERROR: +.02'

(24) MARTIN Co. Well Levels FB #6 12/21/89

STA	+	HI	-	ELEV
	ESTABLISH ELEV. ON WELL # M1073			
BM	3.18 (10.49)	18.84		15.76
TP	5.35 (8.27)	18.94	5.49 (8.17)	13.45
TP	5.04 (8.63)	18.58	5.30 (8.37)	13.54
TP	5.42 (8.24)	18.36	4.64 (8.02)	13.94
TP	5.00 (8.66)	18.91	5.45 (8.22)	13.91
TP	4.90 (8.76)	18.03	4.78 (8.33)	14.13
TP	5.58 (8.09)	18.53	5.05 (8.59)	13.95
TP	5.47 (8.19)	18.93	5.07 (8.59)	14.46
TP	5.98 (7.79)	21.58	4.23 (8.44)	15.70
TBM			1.08 (12.55)	20.50 ADJ. 20.45

STA	+	HI	-	ELEV
	RETURN			
TBM	1.02 (12.64)	21.52		20.45 ADJ. 20.45
TP	4.37 (8.30)	20.09	5.81 (7.86)	15.71
TP	4.70 (8.56)	19.17	5.61 (8.05)	14.47
TP	5.11 (8.56)	18.07	5.21 (8.46)	13.96
TP	4.95 (8.71)	18.10	4.92 (8.74)	14.15
TP	5.22 (8.45)	19.21	5.11 (8.56)	13.99
TP	4.87 (8.79)	18.86	5.22 (8.44)	13.89
TP	4.05 (8.62)	18.89	4.02 (8.65)	14.84
TP	4.26 (8.46)	19.33	3.82 (8.04)	15.07
TBM			3.55 (10.12)	15.73 15.76

MARTIN Co. Well Levels FB #6 12/21/89 (24)

NE COR CONC (SEE PG. 22)

SEE 2 TWP 40S
PAGE 426

TOP N. SIDE 2" PVC WELL # M1073

NE COR CONC.

To ESTABLISH ELEVATIONS FOR "BM JDP WET-6 1996" SEC. 10 T-40S R-42E

HTA	+	H.I.	-	ELEV	Bm Elev
B.M.	1.57 12.09	17.33		15.76	[15.76]
TP.			6.01 7.65	11.32	
	3.34 10.32	14.66			
TP.			4.29 7.37	8.39	
	3.97 9.69	12.34			
TP.			4.68 8.98	7.66	
	4.96 8.70	12.62			
TP.			4.52 9.14	8.10	
	4.62 9.14	12.62			
TP.			4.89 8.77	7.73	
	4.62 9.02	12.37			
TP.			4.17 9.49	8.20	
	4.55 9.11	12.75			
TP.			4.47 9.19	8.28	

Comments.

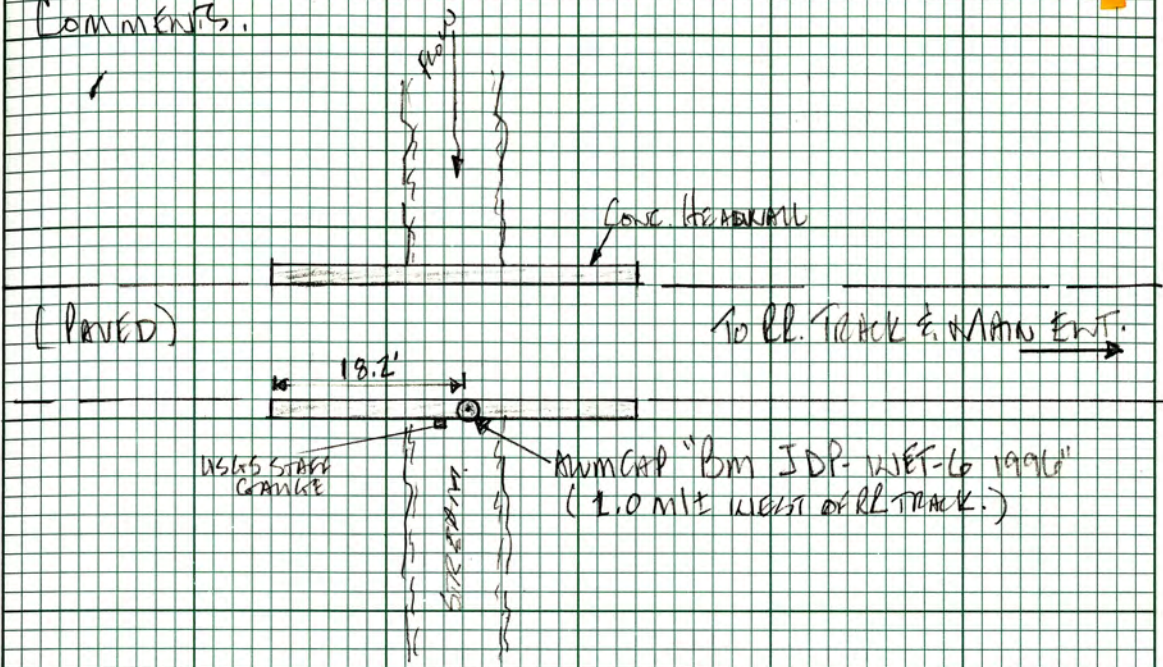
Bm 151 Box Cut FWD ON LONG PAD FOR RR CROSSING CASE SURPT, N.E. COR. OF ROAD AND TRAIL INTER. LOCATED 1.1 MILE NW 1/4 MAIN CASE ENTRANCE TO TRAIL. BOX CUT ON NW COR. OF PAD. [SEE PG. 16]

2/23
4/22/96

LOWERS Fr. Pg 17

STA	+	H.I.	-	ELEV	bm ELEV
	4.94 8.72	13.22		8.28	
TP.			4.13 9.53	9.09	
	4.25 8.41	14.34			
TP.			4.67 8.99	9.67	
	4.66 9.00	14.33			
TP.			4.70 8.96	9.63	
	4.64 9.02	14.27			
TP.			4.09 9.57	10.18	
	3.90 9.76	14.08			
P.M.			3.81 9.85	10.27	[10.27]
<u>Return Levels:</u>					
B.M.	4.08 9.58	14.35		10.27	
TP.			4.17 9.49	10.18	

Comments.



Get Ground Alum CAP TOP OF Culvert KING WALK (Southside) 1.0 mi WEST OF RR TRACK ALONG MAIN ENTRANCE RD. STAMPED "BM JDP WET-6 1996"

"BM JDP WET-6 1996" (ALOVE)

FB
4/24/96

LOWED by. Pg 18

GRA	+	H.I.	-	Elev	low flow
	4.31 9.35	14.49		10.18	
TP			4.86 8.80	- 9.63	
	4.65 9.01	14.28			
TP			4.58 9.08	9.70	
	4.46 9.20	14.16			
TP			5.06 8.60	- 9.10	
	4.17 9.49	13.27			
TP			4.98 8.68	8.29	
	4.54 9.12	12.83			
TP			4.65 9.01	- 8.18	
	4.22 9.24	12.40			
TP			4.65 9.01	7.75	
	4.82 8.84	12.57			
TP			4.45 9.21	8.12	

Comments

✓

FB
ALC/PT

Lower to 10.19

Time	ft	HT.	-	Even	Perm Elev
	4.52 9.14	12.64		8.12	
TP.			4.97 8.69	7.67	
	4.62 9.04	12.29			
TP.			3.93 9.73	8.36	
	6.47 7.19	11.93			
TP.			3.54 10.12	11.29	
	5.80 7.86	17.09			
B.M.			1.336 12.32	15.755	[15.76]

Comments.

✓

Perm in box cut @ ll. King (Heeler. 17)

TP
413014

To Establish Elevation for "BM JDP WET-7 1996"
 SEC. 9 T-40S R-42

STA	+	H.I.	←	Elev	BM Elev
bm	3.98 9.68	10.25		10.27	[10.27]
TP			4.58 9.08	9.67	
TP	4.74 8.92	10.41			
TP			4.93 8.72	9.48	
TP	5.07 8.58	10.55			
TP			4.78 8.88	9.77	
TP	4.53 9.13	10.30			
TP			4.84 8.81	9.46	
TP	4.84 8.81	10.30			
TP			4.57 9.09	9.73	
TP	4.40 9.26	10.13			
TP			4.58 9.07	9.45	
TP	4.89 8.74	10.44			
TP			4.64 9.02	9.80	

FRANKS
 GUSTAFSON
 BURKE

Comments

Box in Stratum Alum Cont Set on TBP Cont. Culture wing-
 with (see pg. 18) labeled "JDP WET-6 1996"

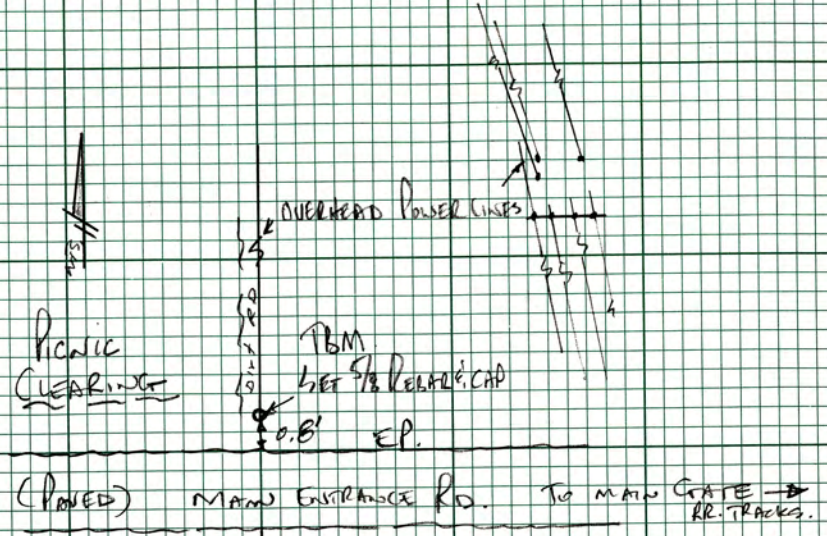
SEC 10 T40S R-42E

213
 4/12/96

Leads by Pg. 21.

SDA	+	H.I.	-	ELEV	BRN Elev
	4.86 8.80	14.66		9.80	
TP			4.42 9.03	10.04	
	4.80 8.85	14.84			
TP			4.01 9.65	10.83	
	4.88 8.78	15.71			
TP			4.93 8.72	10.78	
	4.96 8.69	15.74			
TBM			4.72 8.94	11.02	ADJ. [11.03]
	4.83 8.83	15.85			
TP			4.76 8.89	11.09	
	4.77 8.88	15.86			
TP			4.90 8.76	10.96	
	4.90 8.76	15.86			
TP			4.73 8.92	11.13	

Comments



LET 5/8" LOGGING & PL. CAP UNDER POWER LINES WEST OF RR. TRACK ALONG MAIN ENTRANCE ROAD (AT NORTH E.P.) (NORTH/SOUTH)

2-23 4/19/96

COND for PG 22

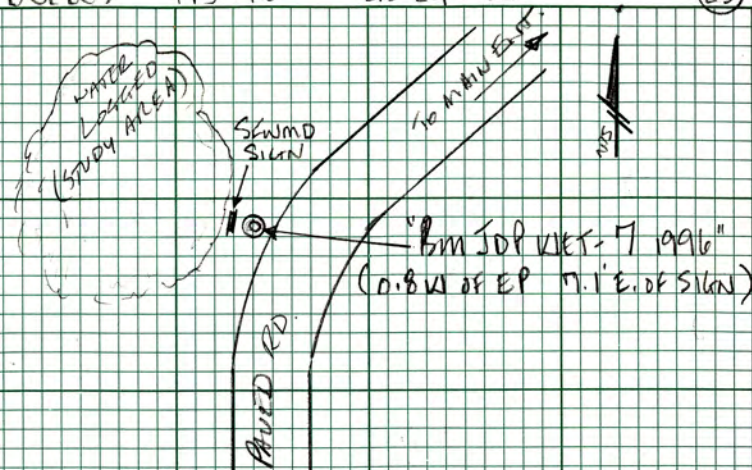
STA	+	H.I.	-	Elev	B.M. Elev
	4.67 8.98	15.80		11.13	
TP			4.58 9.08	11.22	
	4.41 9.25	15.63			
B.M.			4.47 9.18	11.16	11.197

ADJ +0.01 (SEE PG 25)

Known Levels:

B.M.	4.72 8.93	15.88		11.16	
TP			4.66 9.00	11.22	
	4.59 9.07	15.81			
TP			4.70 8.95	11.11	
	4.80 8.85	15.91			
TP			4.93 8.73	10.98	
	4.93 8.73	15.91			
TP			4.84 8.81	11.07	

Comments



has Sewmd Alum Cap Extended "BM JDP-WET-7 1996"
 Located ± 2.15 MI WEST OF FEC RR ALONG MAIN PAVED RD AND
 WEST OF N/S POWERLINE

SEC. 9 T-40S R-42E

"BM JDP WET-7 1996" (Above)

203
also

Control Elev. 11.23

GA	+	H.I.	-	ELEV	Bm Elev
	4.63 9.02	15.70		11.07	
TBM			4.68 8.98	11.02	
	4.76 8.90	15.78			
TP			5.01 8.64	10.77	
	4.89 8.76	15.66			
TP			4.86 8.80	10.80	
	4.14 9.52	18.94			
TP			4.95 8.70	9.99	
	4.83 8.82	14.82			
TP			5.09 8.57	9.73	
	4.74 8.92	14.47			
TP			4.97 8.68	9.50	
	4.69 8.96	14.19			
TP			4.49 9.17	9.70	

Comments

For
archive

Comments Per 21

h ₁ -	+	H.I.	-	Flow	h ₂ -
	4.54 9.12	14.24		9.70	
TP.			4.64 9.01	-	9.60
	4.71 8.94	14.31			
TP.			4.55 9.11	-	9.76
	4.83 8.83	14.59			
TP.			5.03 8.62	-	9.56
	4.63 9.02	14.19			
TP.			4.57 9.09	-	9.62
	4.51 9.15	14.13			
B.M.			3.89 9.76	10.24	[10.27] (error = -0.03)

Comments

"Bm JDP-KIES-Co 1996" (see pg. 21)

203
4/21/96

SEC 9 TWP 40 SOUTH RGE 42 EAST

To ESTABLISH ELEVATION for "bm JOP WET-8 1996"

Sta	±	H.I.	-	Elev	Bm Elev
Bm "bm"	4.58 9.08	15.61		11.03	[11.03]
TP			5.17 8.49	10.24	
TP	4.97 8.69	15.41			
TP			4.92 8.72	10.47	
TP	5.13 8.53	15.60			
TP			4.00 9.66	11.60	
TP	5.06 8.60	16.66			
TP			5.58 8.08	11.08	
TP	4.63 9.03	15.71			
TP			4.72 8.94	10.99	
TP	5.07 8.59	16.06			
TP			6.16 7.50	9.90	

FRANK
GUSTAFSON

Comments

Bm is the level of PL. CAP SET AT INTX OF OVERHEAD WIRE AND MAIN ENTRANCE RD WEST OF RR TRACK (SEE Pg. 22)

SEC. 9, T-40S, R-42E

FRANK
4/30/96

Cont'd fr. Pg. 26

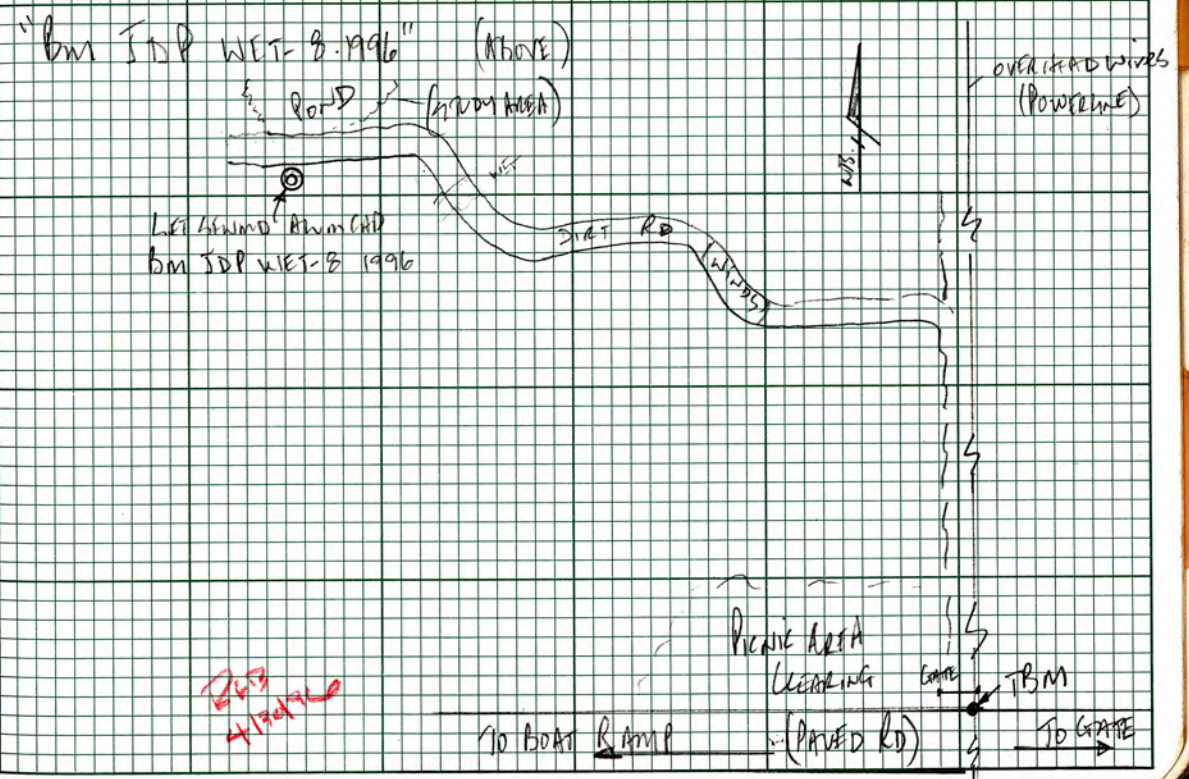
WPA	t	H.I.	-	Elev	Bm Elev
	5:40 8:26	15.30		9.90	
TP			5.08 8:58	10.22	
	5:43 8:23	15.65			
B.M.			5.33 8:33	10.32	[10.32] ✓

Review Levels

B.M.	5:49 8:17	15.81		10.32	
TP			5:59 8:07	10.22	
	5:05 8:01	15.27			
TP			5:43 8:23	9.84	
	6:33 7:33	16.17			
TP			5:23 8:43	10.94	
	4:84 8:02	15.78			
TP			4:73 8:43	11.05	

Comments.

Not Ground Water Cap Sampled "Bm JDP WET-8 1996" Located Along Trail (DORVILLE) 0.5 mile fr. THE INTX OF MAIN ENTRANCE RD AND NORTH SOUTH POWERLINE



Cont'd Fr. Pk. 21

Time	+	H.I.	-	Elev	bm Elev
	5.58 8.08	16.63		11.05	
P.			5.06 8.60	11.57	
	4.84 8.82	16.41			
P.			6.00 7.06	10.41	
	5.26 8.20	15.67			
P.			5.25 8.41	10.42	
	5.36 8.30	15.78			
TBM "B.M."			4.76 8.90	11.02	11.03

Comments

5/8 down of H. cap (16.26)

2:13
4/20/96

1/27/97

BM JDP-WET 7

BS

H1

FS

11.170

2.749

13.919

4.557

RP BOLT
IN STAFF

9.362

CHECK LEVEL

4.425

13.787

2.618

11.169

CLOSURE = .001

GROUND LEVEL @ STAFF

7.42

STAGE 8.98

LEE Y ANDY

601-4108

SOUTH FLORIDA WATER MANAGEMENT DISTRICT



Survey Data Entry and Retrieval Application (SDERA) Print Output

Control Point Search Results

Derived Data - Denoted By: **

Designation	JDPWET6	Record State	ACCEPTED
NGS PID			
Project Name	JONATHAN DICKINSON STATE PARK	Date Entered/Updated	10/29/2015
Updated By	hehmke	Status	
Party Chief		Type	V
Monument Set By	SOUTH FLORIDA WATER MANAGEMENT DISTRICT	Date Established	
County	MARTIN COUNTY	Section	10
Township	40	Range	42
Quadrangle	GOMEZ	Offset (29 to 88)	
NGS Source BM		CCR Link	
Ctrl Pt Source(s)			

<u>Horizontal</u>	<u>NAD 1927</u>	<u>NAD 1983</u>	<u>Vertical</u>	<u>NGVD 1929</u>	<u>NAVD 1988</u>
Latitude		27 00 28.06	Class		
Longitude		80 07 40.82	Order		
Northing(Y)			Elevation	10.275	8.779
Easting(X)			Measurement Unit	Feet	Feet
Class					
Order					
NAD83 Adj Year					

Field Book
Martin County Wells 10

Field Book Pages
18

Stamping
JDP-WET-6 1996

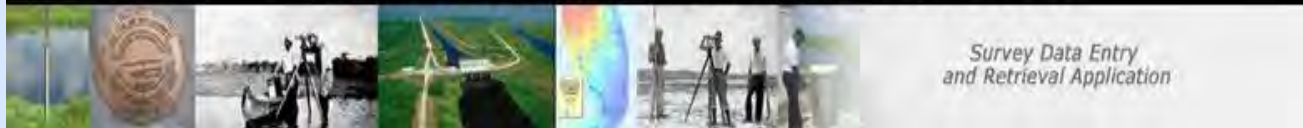
How to Reach
From the intersection of County Line Road and United States Highway 1 (US 1) in Tequesta go 2.4 miles Northwesterly along said US1 to the entrance to Jonathan Dickinson State Park; turn left into the park and go 370 feet to the welcome station; Continue west on the entrance road 0.1 of a mile to a T intersection; turn right and go Northwesterly, Westerly, Northwesterly and Westerly to the Florida East Coast Railway crossing; Continue Westerly and Southwesterly along the main park road (paved) a distance of 1 mile more or less to a culvert bridge over a north/south creek and the station location on the left.
The station is a South Florida Water Management District aluminum cap set in top of the south concrete headwall, 18.2 feet from the west end of the headwall and East of a USGS staff gauge. The aluminum cap is stamped BM JDP-WET-6 1996.
NGS Source Benchmark: M34 (AD3008)

Description
A South Florida Water Management District aluminum cap

DISCLAIMER:
The South Florida Water Management District (hereinafter referred to as the DISTRICT) shall not be held liable for improper or incorrect use of the data, information, apparatus, products,

processes or materials described and/or contained herein. These data, information, apparatus, products, processes, materials and related graphics are not legal documents and are not intended to be used as such. The user hereby recognizes that the information, data, apparatus, products, processes and materials are dynamic and may change over time without notice. However, the DISTRICT makes no commitment to update the information, data, apparatus, products, processes or materials contained herein.

SOUTH FLORIDA WATER MANAGEMENT DISTRICT



Survey Data Entry and Retrieval Application (SDERA) Print Output

Control Point Search Results

Derived Data - Denoted By: **

Designation	JDPWET7	Record State	ACCEPTED
NGS PID			
Project Name	JD6 WELL SITE	Date Entered/Updated	10/30/2015
Updated By	hehmke	Status	
Party Chief		Type	V
Monument Set By	SOUTH FLORIDA WATER MANAGEMENT DISTRICT	Date Established	
County	MARTIN COUNTY	Section	9
Township	40	Range	42
Quadrangle	GOMEZ	Offset (29 to 88)	
NGS Source BM		CCR Link	
Ctrl Pt Source(s)			

<u>Horizontal</u>	<u>NAD 1927</u>	<u>NAD 1983</u>	<u>Vertical</u>	<u>NGVD 1929</u>	<u>NAVD 1988</u>
Latitude		27 00 07.15	Class		
Longitude		80 08 45.1	Order		
Northing(Y)			Elevation	11.18	9.684
Easting(X)			Measurement Unit	Feet	Feet
Class					
Order					
NAD83 Adj Year					

Field Book

Martin County Wells 10

Field Book Pages

23

Stamping

BM JDP-WET-7 1996

How to Reach

From the intersection of County Line Road and United States Highway 1 (US 1) in Tequesta go 2.4 miles Northwesterly along said US1 to the entrance to Jonathan Dickinson State Park; turn left into the park and go 370 feet to the welcome station; Continue west on the entrance road 0.1 of a mile to a T intersection; turn right and go Northwesterly, Westerly, Northwesterly and Westerly along the main park road to the Florida East Coast Railway crossing; Continue Westerly and Southwesterly along the main park road (paved) a distance of 2.2 mile more or less to a bend in the road and station location on the right.

The station is 1-1/4-inch galvanized iron pipe with a South Florida Water Management District (SFWMD) aluminum cap stamped BM JDP-WET-7 1996 located 0.8 of a foot west of the west edge of pavement, 7.1 feet East of a SFWMD sign and East of the water logged study area.

NGS Source benchmark: M34 (AD3008).

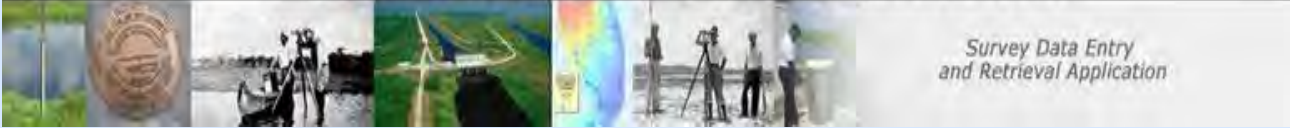
Description

A 1-1/4-inch galvanized iron pipe with a South Florida Water Management District (SFWMD) aluminum cap stamped BM JDP-WET-7 1996.

DISCLAIMER:

The South Florida Water Management District (hereinafter referred to as the DISTRICT) shall not be held liable for improper or incorrect use of the data, information, apparatus, products, processes or materials described and/or contained herein. These data, information, apparatus, products, processes, materials and related graphics are not legal documents and are not intended to be used as such. The user hereby recognizes that the information, data, apparatus, products, processes and materials are dynamic and may change over time without notice. However, the DISTRICT makes no commitment to update the information, data, apparatus, products, processes or materials contained herein.

SOUTH FLORIDA WATER MANAGEMENT DISTRICT

Survey Data Entry
and Retrieval Application

Survey Data Entry and Retrieval Application (SDERA) Print Output

Control Point Search Results

Derived Data - Denoted By: **

Designation	JDPWET8	Record State	ACCEPTED
NGS PID			
Project Name	JD26 WELL SITE	Date Entered/Updated	10/29/2015
Updated By	hehmke	Status	
Party Chief		Type	V
Monument Set By	SOUTH FLORIDA WATER MANAGEMENT DISTRICT	Date Established	
County	MARTIN COUNTY	Section	9
Township	40	Range	42
Quadrangle	GOMEZ	Offset (29 to 88)	
NGS Source BM		CCR Link	
Ctrl Pt Source(s)			

<u>Horizontal</u>	<u>NAD 1927</u>	<u>NAD 1983</u>	<u>Vertical</u>	<u>NGVD 1929</u>	<u>NAVD 1988</u>
Latitude		27 00 33.11	Class		
Longitude		80 08 43.19	Order		
Northing(Y)			Elevation	10.34	8.844
Easting(X)			Measurement Unit	Feet	Feet
Class					
Order					
NAD83 Adj Year					

Field Book

Martin County Wells 10

Field Book Pages

27

Stamping

BM JDP-WET-8 1996

How to Reach

From the intersection of County Line Road and United States Highway 1 (US 1) in Tequesta go 2.4 miles Northwesterly along said US1 to the entrance to Jonathan Dickinson State Park; turn left into the park and go 370 feet to the welcome station; Continue west on the entrance road 0.1 of a mile to a T intersection; turn right and go Northwesterly, Westerly, Northwesterly and Westerly along the main park road to the Florida East Coast Railway crossing; Continue Westerly and Southwesterly along the main park road (paved) a distance of 1.8 miles more or less to a north/south power line and a dirt road; turn right and go north along the dirt road and power lines 0.2 of a mile to a dirt road/trail to the west; turn left onto the dirt road/trail (drivable) and go 0.3 of a mile to the station on the left.

The station is 1-1/4-inch galvanized iron pipe with a South Florida Water Management District (SFWMD) aluminum cap stamped BM JDP-WET-8 1996 located on the south side of the road/trail across from the study area pond.

NGS Source benchmark: M34 (AD3008).

Description

A 1-1/4-inch galvanized iron pipe with a South Florida Water Management District (SFWMD) aluminum cap stamped BM JDP-WET-8 1996 .

DISCLAIMER:

The South Florida Water Management District (hereinafter referred to as the DISTRICT) shall not be held liable for improper or incorrect use of the data, information, apparatus, products, processes or materials described and/or contained herein. These data, information, apparatus, products, processes, materials and related graphics are not legal documents and are not intended to be used as such. The user hereby recognizes that the information, data, apparatus, products, processes and materials are dynamic and may change over time without notice. However, the DISTRICT makes no commitment to update the information, data, apparatus, products, processes or materials contained herein.

The NGS Data Sheet

See file [dsdata.txt](#) for more information about the datasheet.



```

PROGRAM = datasheet95, VERSION = 8.8
1      National Geodetic Survey,  Retrieval Date =
AD3008 *****
AD3008 DESIGNATION - M 34
AD3008 PID - AD3008
AD3008 STATE/COUNTY- FL/MARTIN
AD3008 COUNTRY - US
AD3008 USGS QUAD - JUPITER (1983)
AD3008
AD3008 *CURRENT SURVEY CONTROL
AD3008
AD3008* NAD 83(1986) POSITION- 26 59 43. (N) 080 06 22. (W) SCALED
AD3008* NAVD 88 ORTHO HEIGHT - 3.367 (meters) 11.05 (feet) ADJUSTED
AD3008
AD3008 GEOID HEIGHT - -27.529 (meters) GEOID12B
AD3008 DYNAMIC HEIGHT - 3.362 (meters) 11.03 (feet) COMP
AD3008 MODELED GRAVITY - 979,093.5 (mgal) NAVD 88
AD3008
AD3008 VERT ORDER - FIRST CLASS I
AD3008
AD3008.The horizontal coordinates were scaled from a topographic map and have
AD3008.an estimated accuracy of +/- 6 seconds.
AD3008.
AD3008.The orthometric height was determined by differential leveling and
AD3008.adjusted by the NATIONAL GEODETIC SURVEY
AD3008.in June 1991.
AD3008
AD3008.WARNING-Repeat measurements at this control monument indicate possible
AD3008.vertical movement.
AD3008
AD3008.Significant digits in the geoid height do not necessarily reflect accuracy.
AD3008.GEOID12B height accuracy estimate available here.
AD3008
AD3008.The dynamic height is computed by dividing the NAVD 88
AD3008.geopotential number by the normal gravity value computed on the
AD3008.Geodetic Reference System of 1980 (GRS 80) ellipsoid at 45
AD3008.degrees latitude (g = 980.6199 gals.).
AD3008
AD3008.The modeled gravity was interpolated from observed gravity values.
AD3008
AD3008;
AD3008;SPC FL E - North East Units Estimated Accuracy
AD3008; 295,200. 288,720. MT (+/- 180 meters Scaled)
AD3008
AD3008 SUPERSEDED SURVEY CONTROL
AD3008
AD3008 NGVD 29 (??/??/92) 3.823 (m) 12.54 (f) ADJ UNCH 1 1
AD3008
AD3008.Superseded values are not recommended for survey control.
AD3008
AD3008.NGS no longer adjusts projects to the NAD 27 or NGVD 29 datums.
AD3008.See file dsdata.txt to determine how the superseded data were derived.
AD3008
AD3008_U.S. NATIONAL GRID SPATIAL ADDRESS: 17RNK886862(NAD 83)
AD3008
AD3008_MARKER: DB = BENCH MARK DISK
AD3008_SETTING: 7 = SET IN TOP OF CONCRETE MONUMENT
AD3008_STAMPING: M 34 1933 12.516

```


DATASHEETS

AD3008_MARK LOGO: CGS
 AD3008_MAGNETIC: N = NO MAGNETIC MATERIAL
 AD3008_STABILITY: C = MAY HOLD, BUT OF TYPE COMMONLY SUBJECT TO
 AD3008+STABILITY: SURFACE MOTION

AD3008

AD3008	HISTORY	- Date	Condition	Report By
AD3008	HISTORY	- 1933	MONUMENTED	CGS
AD3008	HISTORY	- 1965	GOOD	CGS
AD3008	HISTORY	- 1972	GOOD	NGS
AD3008	HISTORY	- 1980	GOOD	FLDNR
AD3008	HISTORY	- 20010426	GOOD	GCYI

AD3008

AD3008 STATION DESCRIPTION

AD3008

AD3008'DESCRIBED BY COAST AND GEODETIC SURVEY 1965

AD3008'4.3 MI N FROM JUPITER.

AD3008'ABOUT 4.3 MILES NORTH ALONG THE FLORIDA EAST COAST RAILWAY FROM

AD3008'THE FREIGHT STATION AT JUPITER, IN SECTION 13, R 42 E, T 40 S,

AD3008'0.35 MILE SOUTH OF A ROAD CROSSING, 64 FEET NORTHEAST OF AND

AD3008'ACROSS THE TRACK FROM MILEPOST 279, 37.9 FEET NORTHEAST OF THE

AD3008'NORTHEAST RAIL, 75 FEET SOUTHWEST OF THE CENTER LINE OF A BLACK

AD3008'TOP ROAD, 50 YARDS SOUTHEAST OF A SMALL POND, 1.3 FEET SOUTHEAST

AD3008'OF A METAL WITNESS POST, 1 FOOT BELOW THE LEVEL OF THE TRACK

AD3008'AND SET IN THE TOP OF A CONCRETE POST PROJECTING 2 INCHES

AD3008'ABOVE THE LEVEL OF THE GROUND. NOTE-- THE MARK IS 65.5 FEET

AD3008'NORTHEAST OF AND ACROSS THE TRACK FROM MILEPOST 279, INSTEAD

AD3008'OF 64 FEET. ALSO, THERE IS A DIM TRAIL 13 FEET SOUTH OF THE

AD3008'MARK BUT IT DOES NOT CROSS THE RAILROAD.

AD3008

AD3008 STATION RECOVERY (1972)

AD3008

AD3008'RECOVERY NOTE BY NATIONAL GEODETIC SURVEY 1972

AD3008'RECOVERED IN GOOD CONDITION.

AD3008

AD3008 STATION RECOVERY (1980)

AD3008

AD3008'RECOVERY NOTE BY FL DEPT OF NAT RES 1980

AD3008'RECOVERED IN GOOD CONDITION.

AD3008

AD3008 STATION RECOVERY (2001)

AD3008

AD3008'RECOVERY NOTE BY G.C.Y., INCORPORATED 2001

AD3008'RECOVERED AS DESCRIBED.

*** retrieval complete.

Elapsed Time = 00:00:02

The NGS Data Sheet

See file [dsdata.txt](#) for more information about the datasheet.



```

PROGRAM = datasheet95, VERSION = 8.8
1      National Geodetic Survey,  Retrieval Date =
AD3008 *****
AD3008 DESIGNATION - M 34
AD3008 PID - AD3008
AD3008 STATE/COUNTY- FL/MARTIN
AD3008 COUNTRY - US
AD3008 USGS QUAD - JUPITER (1983)
AD3008
AD3008 *CURRENT SURVEY CONTROL
AD3008
AD3008* NAD 83(1986) POSITION- 26 59 43. (N) 080 06 22. (W) SCALED
AD3008* NAVD 88 ORTHO HEIGHT - 3.367 (meters) 11.05 (feet) ADJUSTED
AD3008
AD3008 GEOID HEIGHT - -27.529 (meters) GEOID12B
AD3008 DYNAMIC HEIGHT - 3.362 (meters) 11.03 (feet) COMP
AD3008 MODELED GRAVITY - 979,093.5 (mgal) NAVD 88
AD3008
AD3008 VERT ORDER - FIRST CLASS I
AD3008
AD3008.The horizontal coordinates were scaled from a topographic map and have
AD3008.an estimated accuracy of +/- 6 seconds.
AD3008.
AD3008.The orthometric height was determined by differential leveling and
AD3008.adjusted by the NATIONAL GEODETIC SURVEY
AD3008.in June 1991.
AD3008
AD3008.WARNING-Repeat measurements at this control monument indicate possible
AD3008.vertical movement.
AD3008
AD3008.Significant digits in the geoid height do not necessarily reflect accuracy.
AD3008.GEOID12B height accuracy estimate available here.
AD3008
AD3008.The dynamic height is computed by dividing the NAVD 88
AD3008.geopotential number by the normal gravity value computed on the
AD3008.Geodetic Reference System of 1980 (GRS 80) ellipsoid at 45
AD3008.degrees latitude (g = 980.6199 gals.).
AD3008
AD3008.The modeled gravity was interpolated from observed gravity values.
AD3008
AD3008;
AD3008;SPC FL E - North East Units Estimated Accuracy
AD3008; 295,200. 288,720. MT (+/- 180 meters Scaled)
AD3008
AD3008 SUPERSEDED SURVEY CONTROL
AD3008
AD3008 NGVD 29 (??/??/92) 3.823 (m) 12.54 (f) ADJ UNCH 1 1
AD3008
AD3008.Superseded values are not recommended for survey control.
AD3008
AD3008.NGS no longer adjusts projects to the NAD 27 or NGVD 29 datums.
AD3008.See file dsdata.txt to determine how the superseded data were derived.
AD3008
AD3008_U.S. NATIONAL GRID SPATIAL ADDRESS: 17RNK886862(NAD 83)
AD3008
AD3008_MARKER: DB = BENCH MARK DISK
AD3008_SETTING: 7 = SET IN TOP OF CONCRETE MONUMENT
AD3008_STAMPING: M 34 1933 12.516

```

DATASHEETS

AD3008_MARK LOGO: CGS
 AD3008_MAGNETIC: N = NO MAGNETIC MATERIAL
 AD3008_STABILITY: C = MAY HOLD, BUT OF TYPE COMMONLY SUBJECT TO
 AD3008+STABILITY: SURFACE MOTION

AD3008

AD3008	HISTORY	- Date	Condition	Report By
AD3008	HISTORY	- 1933	MONUMENTED	CGS
AD3008	HISTORY	- 1965	GOOD	CGS
AD3008	HISTORY	- 1972	GOOD	NGS
AD3008	HISTORY	- 1980	GOOD	FLDNR
AD3008	HISTORY	- 20010426	GOOD	GCYI

AD3008

AD3008 STATION DESCRIPTION

AD3008

AD3008'DESCRIBED BY COAST AND GEODETIC SURVEY 1965

AD3008'4.3 MI N FROM JUPITER.

AD3008'ABOUT 4.3 MILES NORTH ALONG THE FLORIDA EAST COAST RAILWAY FROM
 AD3008'THE FREIGHT STATION AT JUPITER, IN SECTION 13, R 42 E, T 40 S,
 AD3008'0.35 MILE SOUTH OF A ROAD CROSSING, 64 FEET NORTHEAST OF AND
 AD3008'ACROSS THE TRACK FROM MILEPOST 279, 37.9 FEET NORTHEAST OF THE
 AD3008'NORTHEAST RAIL, 75 FEET SOUTHWEST OF THE CENTER LINE OF A BLACK
 AD3008'TOP ROAD, 50 YARDS SOUTHEAST OF A SMALL POND, 1.3 FEET SOUTHEAST
 AD3008'OF A METAL WITNESS POST, 1 FOOT BELOW THE LEVEL OF THE TRACK
 AD3008'AND SET IN THE TOP OF A CONCRETE POST PROJECTING 2 INCHES
 AD3008'ABOVE THE LEVEL OF THE GROUND. NOTE-- THE MARK IS 65.5 FEET
 AD3008'NORTHEAST OF AND ACROSS THE TRACK FROM MILEPOST 279, INSTEAD
 AD3008'OF 64 FEET. ALSO, THERE IS A DIM TRAIL 13 FEET SOUTH OF THE
 AD3008'MARK BUT IT DOES NOT CROSS THE RAILROAD.

AD3008

AD3008 STATION RECOVERY (1972)

AD3008

AD3008'RECOVERY NOTE BY NATIONAL GEODETIC SURVEY 1972

AD3008'RECOVERED IN GOOD CONDITION.

AD3008

AD3008 STATION RECOVERY (1980)

AD3008

AD3008'RECOVERY NOTE BY FL DEPT OF NAT RES 1980

AD3008'RECOVERED IN GOOD CONDITION.

AD3008

AD3008 STATION RECOVERY (2001)

AD3008

AD3008'RECOVERY NOTE BY G.C.Y., INCORPORATED 2001

AD3008'RECOVERED AS DESCRIBED.

*** retrieval complete.

Elapsed Time = 00:00:02

MCW 6 P 22-24

PROJECT:
LINE FROM CUT TO JDP WET 8

FIELD BOOK MCW 10 P 17-28 ORDER 3rd
PARTY CHIEF EBANKS (1996) COUNTY MARTIN
HOWARD (1988)

ADJ. BY HJE
DATE 10/29/15

SECTION	DISTANCE	F B	SUM ROD READINGS		DIFF. ELEV.	MEAN DIFF.	ELEVATIONS			REMARKS
			BACK +	FWD. -			UNADJ.	CORR.	ADJ.	
MCW 6 P 22-24 HOWARD										12.5426 M 34 (AD 3008)
		F	80.35	77.12	+3.23					11.04676 (88) → 3.823 M (29)
		B	71.74	74.95	-3.21					3.367 M (88)
										DIFF. (0.456 M)
NE CORNER CONC. BASE LL BARRIER <input type="checkbox"/> CUT						+3.22				15.7626
		F	50.94	56.43	-5.49					14.26657 (88)
		B	56.66	51.175	+5.485					
						-5.4875				10.2752
JDP WET 6		F	75.53	74.64	+0.89					8.77907 (88)
		B	74.94	75.86	-0.92					
JDP WET 7						+0.905				11.1801
										9.6841 (88)
		F		51.95	51.20	+0.75				11.0451258333
5/8" TBM P. 22						+0.77				11.0451
		F	40.27	40.98	-0.71					TOTAL ERROR = 0.03
		B	42.75	42.05	+0.70					TOTAL TURN 16 TURNS TO TBM = 11
										16 = 0.6875 - 0.03 = 0.02
JDP WET 8						-0.705				10.3401258333 (29)
										8.8440658333 (88)







THE
MUSEUM
OF
FLORIDA
HISTORICAL
MARKER
1864-1904
The Florida
Museum
of
Natural
History
is a
part of
the
University
of
Florida
Gainesville
Campus





506

CA-ROBOTIC
5V 1A
USB POWER SUPPLY

CA-ROBOTIC
5V 1A
USB POWER SUPPLY

CA-ROBOTIC
5V 1A
USB POWER SUPPLY

89

R.P. - Sta - 14.25
2nd G.W. - 14.89
2/18/97





2-18-97
RP 2.14 DIFF CO/OTA
20/14

RP-549-14.75
2" 621-14.89
2/18/97

1/8"

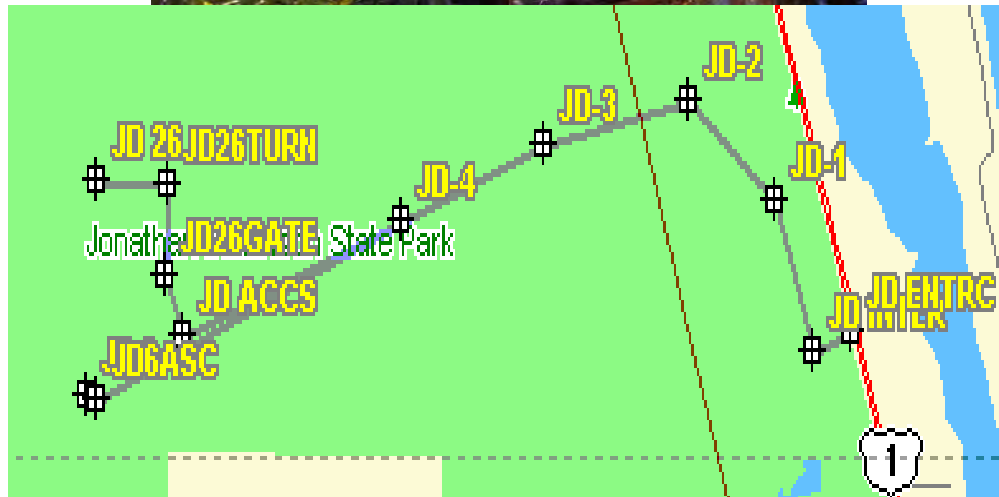
3003

JD67



General Site Information

Site Name: JD26
Site Lat/Long: 27 00 33.2400 -80 08 44.2200
Data Collection Type: MANUAL



SITE SPECIFICS

ACCESS TYPE:	REMOTE
REPORTING TYPE:	NONE
DUE DATE:	MONTHLY
DIRECTIONS FROM SFWMD F.O.C. (W.P.B.)	
EAST ON BELVEDERE RD. 2.66 MILES TO JOG RD. NORTH ON JOG RD. 1.30 MILES TO OKEECHOBEE RD. EAST ON OKEECHOBEE 0.91 MILES TO FL. TURNPIKE. NORTH ON FL. TURNPIKE TO S.R. 76 (INDIANTOWN RD.) EXIT. EAST ON SR76 (INDIANTOWN RD.) 4.74 MILES TO US-1. NORTH ON US-1 5.25 MILES TO JONATHAN DICKINSON STATE PARK ENTRANCE ON LEFT.	





3026

2-19-97 LH/AU
STC REF = 15.57
GW REF = 15.72
DATE OF = 15

WATERLOG
WATERLOG
41094 104



JD26

2-19-97 LH/AW

STG REF = 15.57

GW REF = 15.72

DIFF OF = .15

HUMIDITY INDICATOR
MC2003-2
EXAMINE
ITEM
IF PINK
CHANGE
DESIGN



READY FOR
GREEN

CAMPBELL SCIENTIFIC

SWITCHED 12V

1 2 3 4 5 6 7 8 9 10 11 12

DIRT AG H L AG H L AG H L AG H L AG H L AG H L AG H L AG H L AG H L

EARLY

0 1 2 3 4 5 6 7 8 9 10 11 12

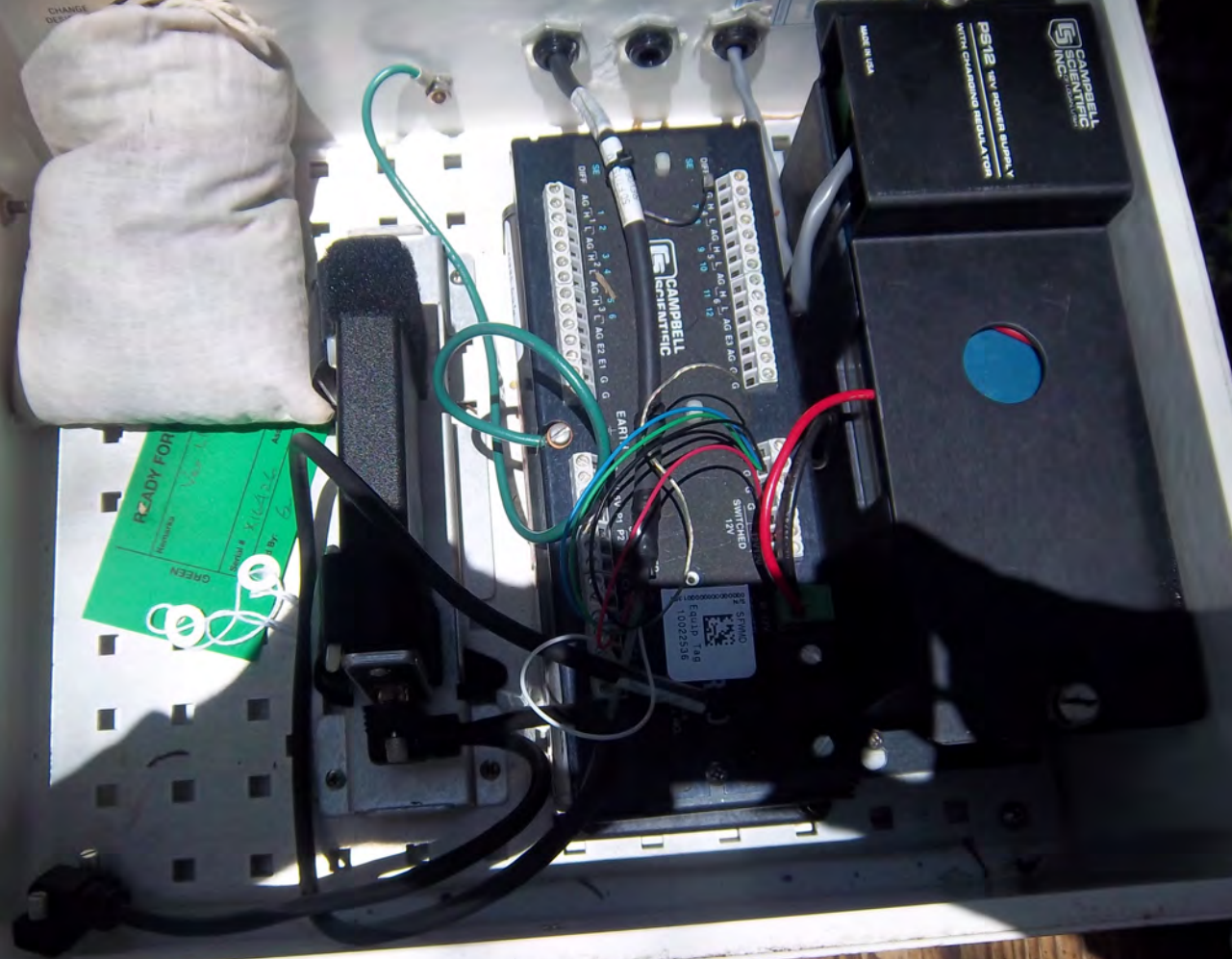
0 1 2 3 4 5 6 7 8 9 10 11 12

CAMPBELL SCIENTIFIC
INCL. 3 YEAR WARRANTY

PS12 12V BATTERY ALUMINUM
WITH CHARGING REGULATOR

MADE IN USA

STWMO
10022538



JD26

2-19-97 LH/AW

STG REF = 15.57

GW REF = 15.72

DIFF OF = .15



1/28/97

BM ← JDPWET-8

BS₀

HI

FS

10.320

5.138

15.458

5.522

RP BOLT IN STAFF

9.936

CHECK LEVEL

5.436

15.372

5.051

10.321

CLOSURE = .001

GRND ELEV 8.50±

STAGE = 9.71

2" WELL

STAGE WELL RP = 15.57

2" WELL RP = 15.72