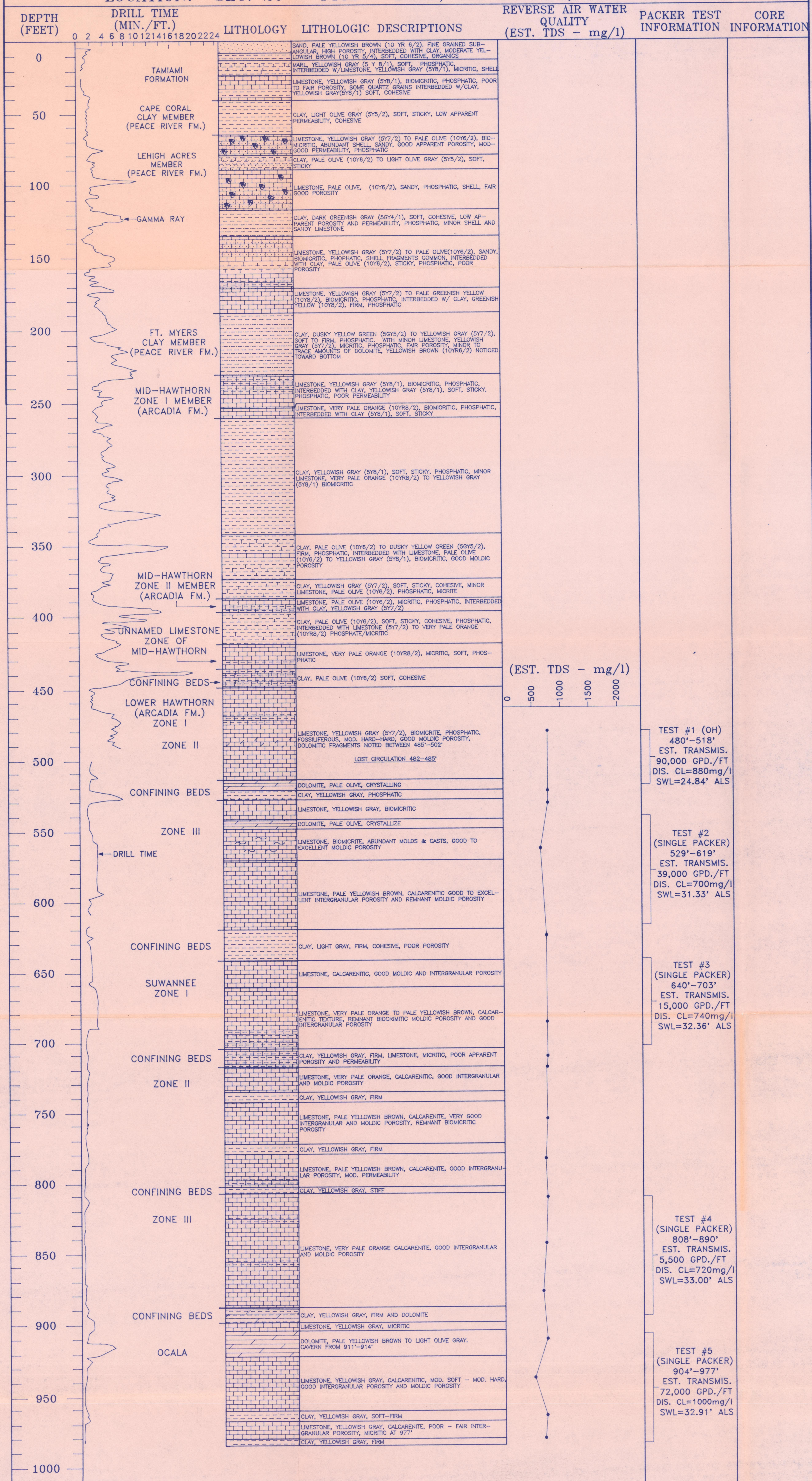
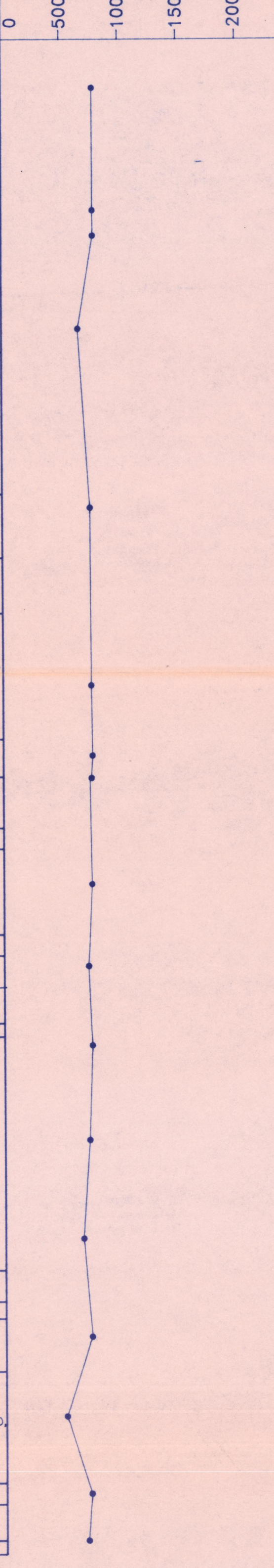


PLATE I

WELL NAME: NORTH RESERVOIR OBSERVATION WELL #1(LM-6208)
 LOCATION: SEC. 20 - T43S - R25E, LEE COUNTY, FLORIDA



(EST. TDS - mg/l)



- TEST #1 (OH)
480'-518'
EST. TRANSMIS.
90,000 GPD./FT
DIS. CL=880mg/l
SWL=24.84' ALS
- TEST #2
(SINGLE PACKER)
529'-619'
EST. TRANSMIS.
39,000 GPD./FT
DIS. CL=700mg/l
SWL=31.33' ALS
- TEST #3
(SINGLE PACKER)
640'-703'
EST. TRANSMIS.
15,000 GPD./FT
DIS. CL=740mg/l
SWL=32.36' ALS
- TEST #4
(SINGLE PACKER)
808'-890'
EST. TRANSMIS.
5,500 GPD./FT
DIS. CL=720mg/l
SWL=33.00' ALS
- TEST #5
(SINGLE PACKER)
904'-977'
EST. TRANSMIS.
72,000 GPD./FT
DIS. CL=1000mg/l
SWL=32.91' ALS