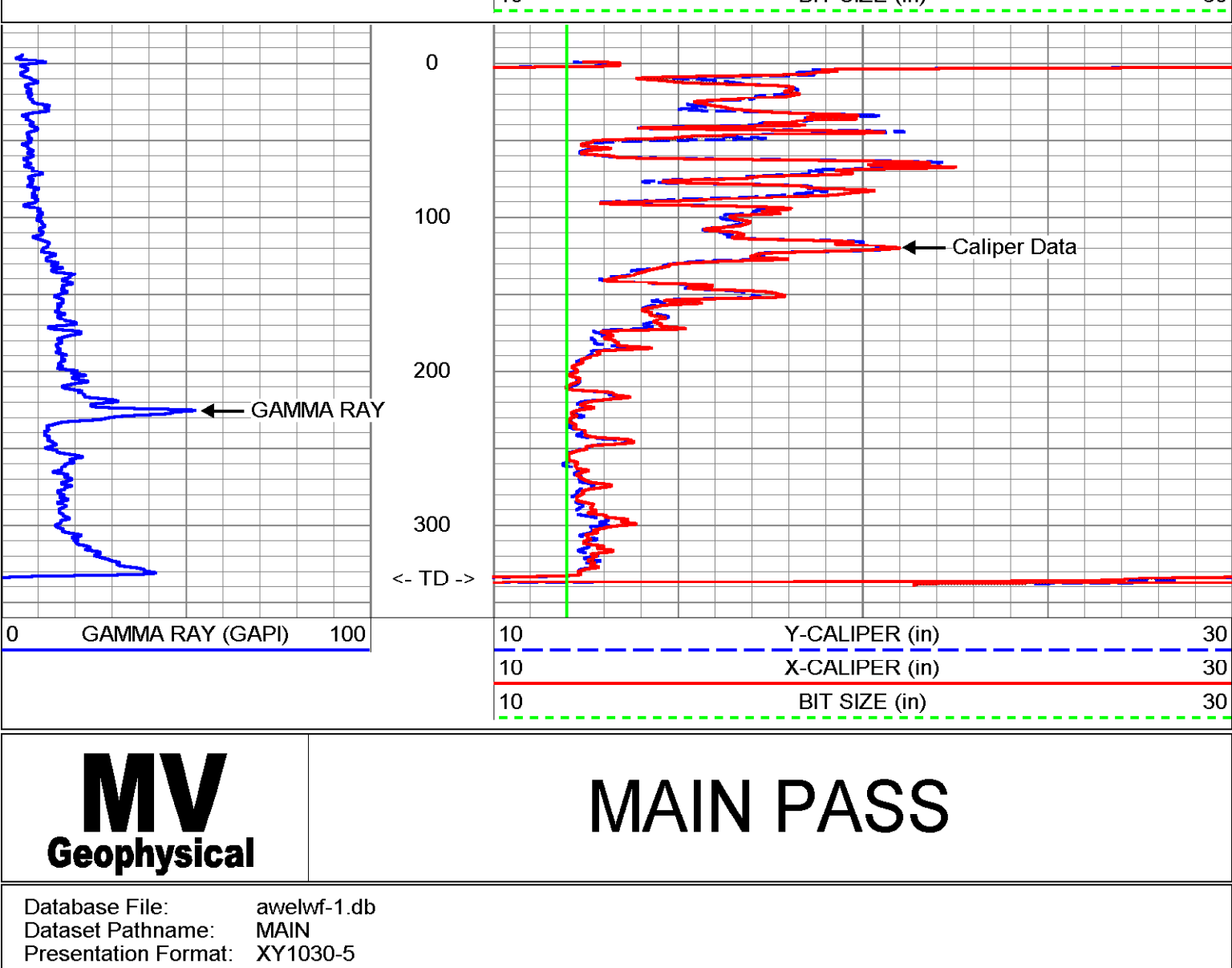


| | | | | |
|---|---------------------------------|---------------------------------|--------------------------------------|--------------------------|
| Company: Lake Worth Utilities | | Well: F-1 | Lake Worth Utilities | |
| Field: Lake Worth | | County: Palm Beach | State/Prv: Florida | |
| Location: City of Lake Worth Water Treatment Plant | | JLA Geosciences, Inc. | | |
| Permanent Datum: G.L. | Elevation: 25' | Other Services: DIL/SP | | |
| Log Measured From: G.L. | K.B. 30' | Elevation: G.L. 25' | | |
| Drilling Measured From: G.L. | G.L. | Date: 26-JAN-2005 | | |
| Run Number: ONE | Depth Driver: 335' | Bottom Logger: 335' | Surface: SURFACE | Run Number: ONE |
| Depth Interval: 335' | Bottom Logger Interval: SURFACE | Depth Interval: SURFACE | Bottom Logger Interval: SURFACE | Run Number: ONE |
| Type Fluid: MUD | Density / Viscosity: 9.2/47 | Type Fluid: MUD | Density / Viscosity: 9.2/47 | Run Number: ONE |
| Type Fluid: MUD | Density / Viscosity: 9.2/47 | Type Fluid: MUD | Density / Viscosity: 9.2/47 | Run Number: ONE |
| Max. Recorded Temp.: na | Estimated Cement Top: NA | Time Vels. Ready: 12:00 1/28/05 | Time Logged on Bottom: 14:45 1/28/05 | Equipment Number: M/GS-1 |
| Location: F1 Myers | Recorded By: S Miller | Witnessed By: J Anderson (JLA) | Checked By: S EDEK (AWE) | Darin Webb (AWE) |
| Run Number: ONE | Surface String: 335' | Surface String: 335' | Surface String: 335' | Surface String: 335' |
| Run Number: ONE | Surface String: 335' | Surface String: 335' | Surface String: 335' | Surface String: 335' |
| Run Number: ONE | Surface String: 335' | Surface String: 335' | Surface String: 335' | Surface String: 335' |
| Run Number: ONE | Surface String: 335' | Surface String: 335' | Surface String: 335' | Surface String: 335' |
| Run Number: ONE | Surface String: 335' | Surface String: 335' | Surface String: 335' | Surface String: 335' |
| Run Number: ONE | Surface String: 335' | Surface String: 335' | Surface String: 335' | Surface String: 335' |
| Run Number: ONE | Surface String: 335' | Surface String: 335' | Surface String: 335' | Surface String: 335' |
| Run Number: ONE | Surface String: 335' | Surface String: 335' | Surface String: 335' | Surface String: 335' |
| Run Number: ONE | Surface String: 335' | Surface String: 335' | Surface String: 335' | Surface String: 335' |
| Run Number: ONE | Surface String: 335' | Surface String: 335' | Surface String: 335' | Surface String: 335' |
| Run Number: ONE | Surface String: 335' | Surface String: 335' | Surface String: 335' | Surface String: 335' |
| Run Number: ONE | Surface String: 335' | Surface String: 335' | Surface String: 335' | Surface String: 335' |
| Run Number: ONE | Surface String: 335' | Surface String: 335' | Surface String: 335' | Surface String: 335' |

MAXIMUM Caliper Arm Extension: 33"
 Drilling Contractor: All Webb Enterprises, Inc.

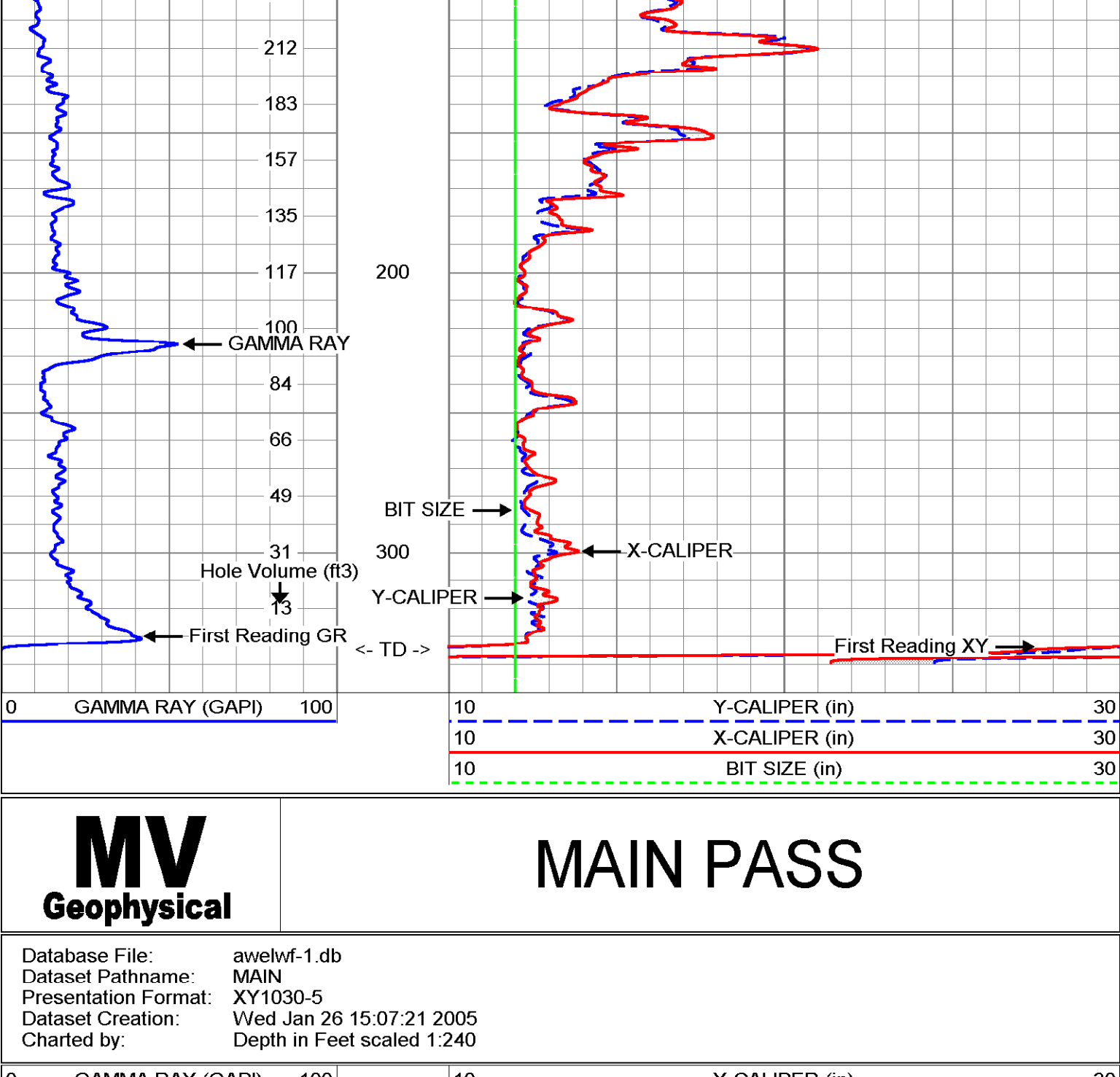
MAIN PASS

Database File: awelwf-1.db
 Dataset Pathname: MAIN
 Presentation Format: XY1030-1
 Dataset Creation: Wed Jan 26 15:07:21 2005
 Charted by: Depth in Feet scaled 1:1200



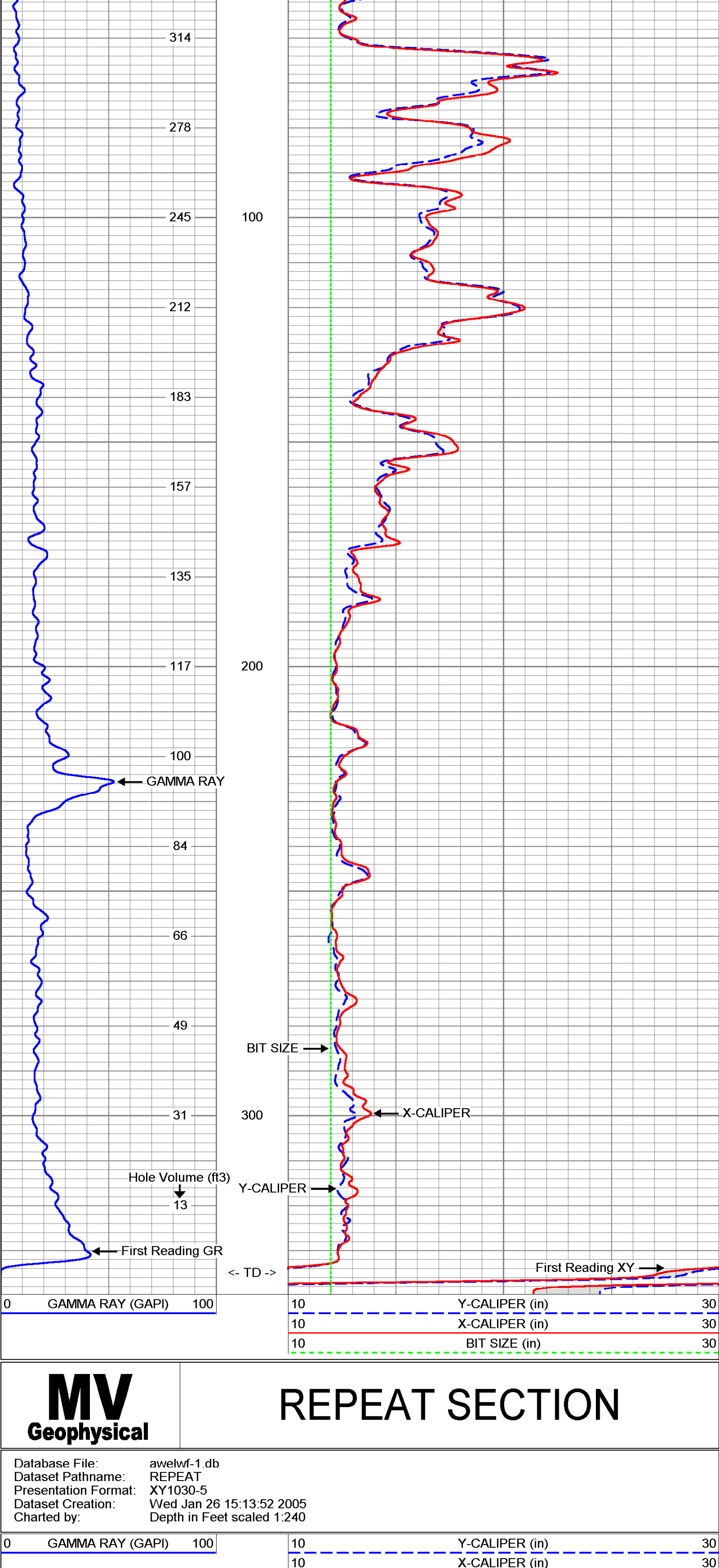
MAIN PASS

Database File: awelwf-1.db
 Dataset Pathname: MAIN
 Presentation Format: XY1030-5
 Dataset Creation: Wed Jan 26 15:07:21 2005
 Charted by: Depth in Feet scaled 1:600



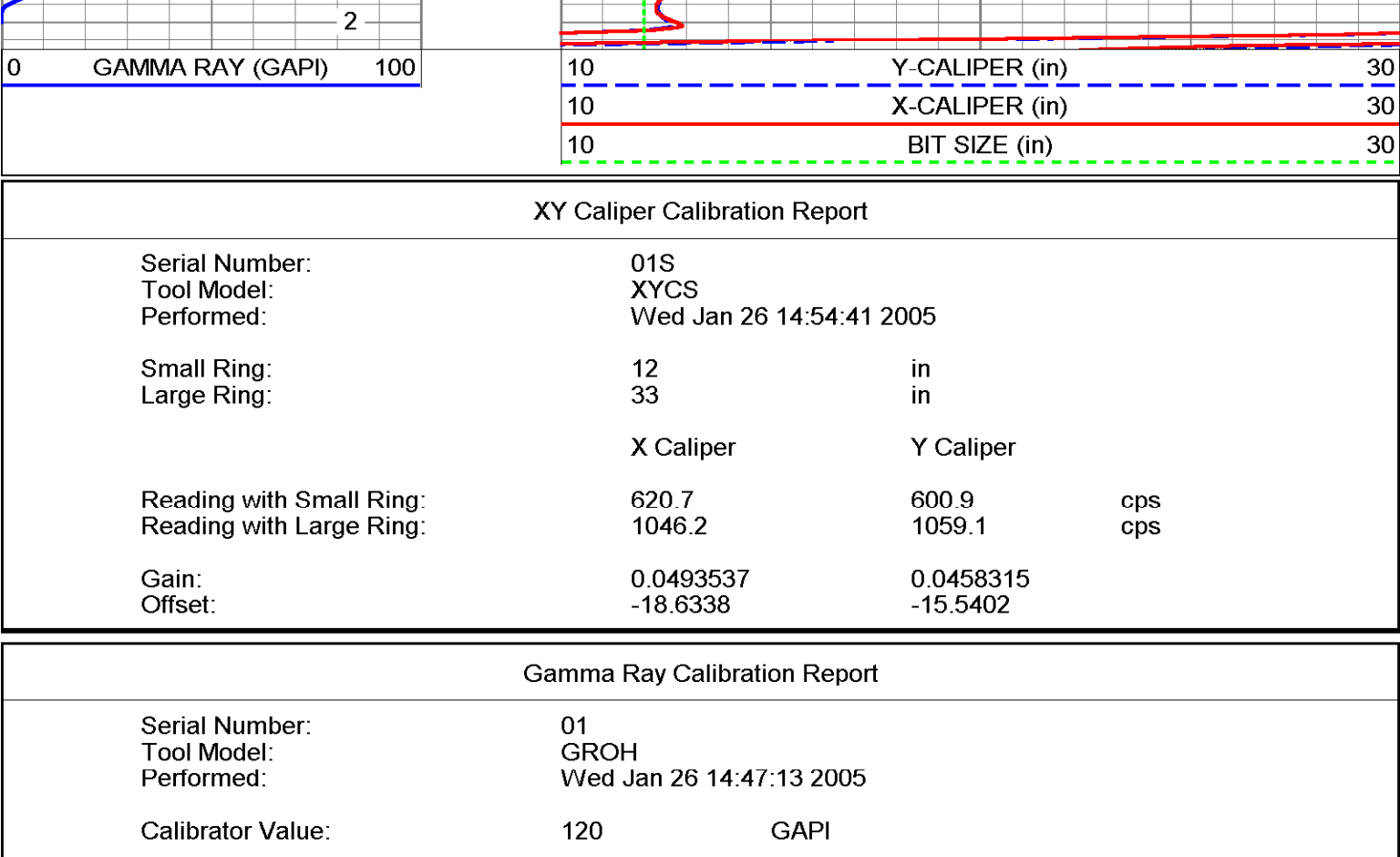
MAIN PASS

Database File: awelwf-1.db
 Dataset Pathname: MAIN
 Presentation Format: XY1030-5
 Dataset Creation: Wed Jan 26 15:07:21 2005
 Charted by: Depth in Feet scaled 1:240



REPEAT SECTION

Database File: awelwf-1.db
 Dataset Pathname: REPEAT
 Presentation Format: XY1030-5
 Dataset Creation: Wed Jan 26 15:13:52 2005
 Charted by: Depth in Feet scaled 1:240



XY Caliper Calibration Report

| | | | |
|--------------------------|--------------------------|-----------|-----|
| Serial Number: | 01S | | |
| Tool Model: | XYCS | | |
| Performed: | Wed Jan 26 14:54:41 2005 | | |
| Small Ring: | 12 | in | |
| Large Ring: | 33 | in | |
| | X Caliper | Y Caliper | |
| Reading with Small Ring: | 620.7 | 600.9 | cps |
| Reading with Large Ring: | 1046.2 | 1059.1 | cps |
| Gain: | 0.0493537 | 0.0458315 | |
| Offset: | -18.6338 | -15.5402 | |

Gamma Ray Calibration Report

| | | |
|---------------------|--------------------------|----------|
| Serial Number: | 01 | |
| Tool Model: | GROH | |
| Performed: | Wed Jan 26 14:47:13 2005 | |
| Calibrator Value: | 120 | GAPI |
| Background Reading: | 10.715 | cps |
| Calibrator Reading: | 126.476 | cps |
| Sensitivity: | 1.03662 | GAPI/cps |

