



RMBAKER LLC

WELL M-1236
UWI M-1236

Geology and Geophysics

8600 Oldbridge Lane
Orlando, FL 32819
mobile ph 407-733-8958

LOG STAGE EXPLORATORY

rob@rmbaker.com
www.rmbaker.com

HEADER NOTES:
TOP OF SCREEN SLOTS AT 95.6 FEET

COMP	SFWMD
LOC	M-1236
FLD	SOUTH FORK
CNTY	MARTIN
STAT	FL
PROV	FL
CTRY	USA
LATI	X
LONG	Y
GDAT	WGS84
SEC	HDAT
TWP	ELEV
RGE	V DAT

ALL SERVICES:
DUAL INDUCTION
NATURAL GAMMA
VIDEO

PERMANENT DATUM:

LOG MEASURED FROM: TOC

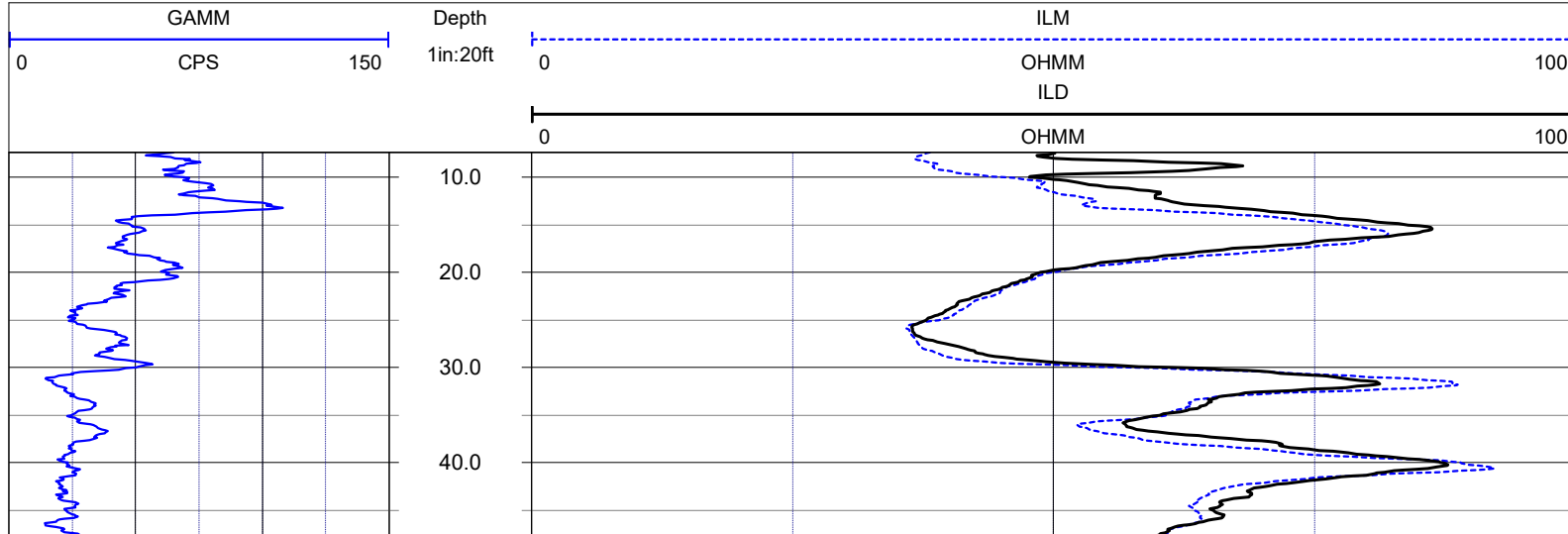
DRILLING MEASURED FROM:

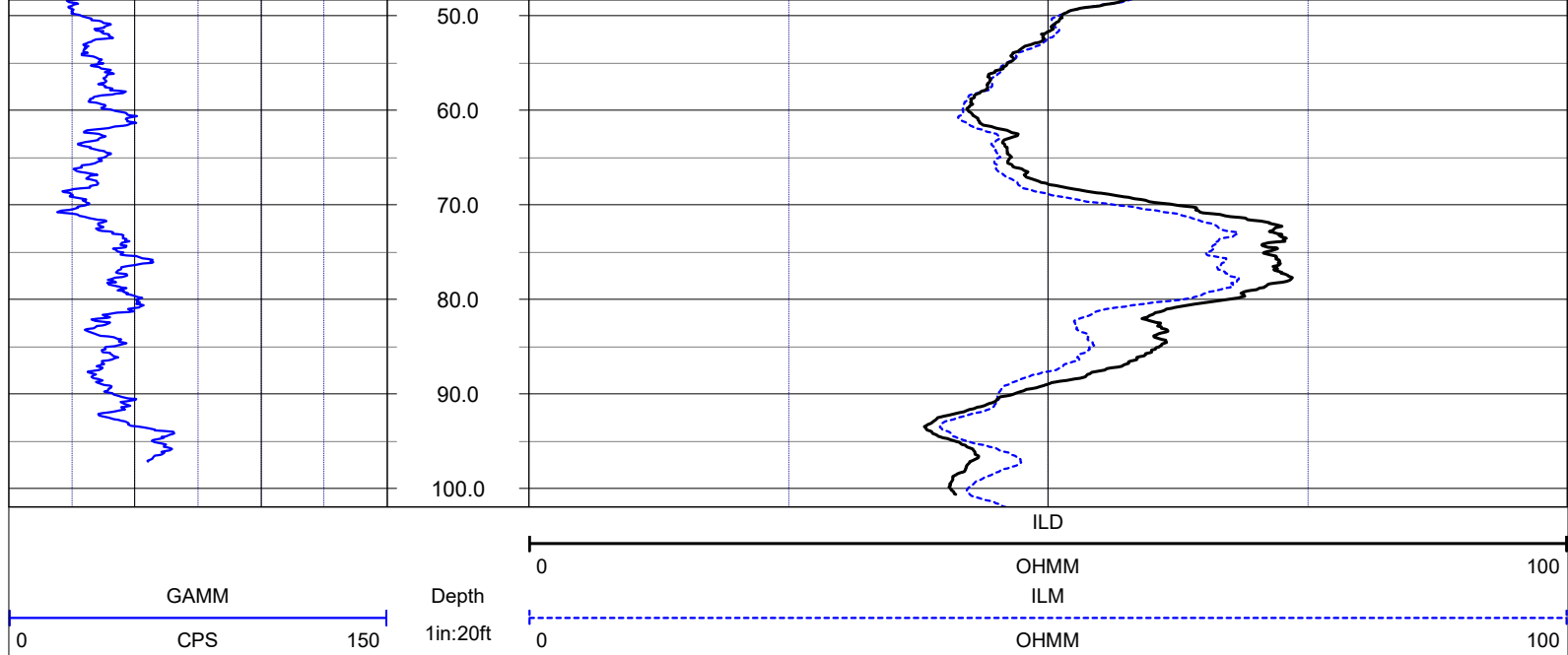
DATE	30 Aug 17	TYPE FLUID IN HOLE	WATER
RUN No	1	LOGGING SPEED (FT/MIN)	20
TYPE LOG	DUAL INDUCTION	TROLLING DIRECTION	UP
DEPTH-DRILLER	103	PUMPING RATE (GPM)	N/A
DEPTH-LOGGER	104.15		
DRILLER	N/A		
RECORDED BY	RMB		
SRVC	RMBAKER LLC	API	N/A
WITNESSED BY	E. GEDES	LIC	N/A

BOREHOLE RECORD				CASING RECORD			
RUN NO.	BIT FROM	TO	SIZE	MAT.	FROM	TO	
1			2	PVC	0	104.15	

LOG CODES

3-arm caliper	CAL	long normal resistivity	RLN	deep induction conductivity	IDC
natural gamma (CPS)	GAMM	8 inch resistivity	R8	shallow induction conductivity	ISC
spontaneous potential	ESP	32 inch resistivity	R32	sonic interval velocity	DT
single point resistance	RES	deep induction resistivity	ILD	sonic porosity (RHG method)	SPHI
short normal resistivity	RSN	shallow induction resistivity	ILM	repeat designation	R





NOTES:
 While due care has been exercised in the performance of these measurements and observations, in accordance with methodologies utilized by the general practitioner, RмбаKER LLC can make no representations, warranties, or guarantees with respect to latent or concealed conditions that may exist, which may be beyond the detection capabilities of the methodologies used, or that may extend beyond the areas and depths surveyed.
 The geophysical well logs show subsurface conditions as they existed at the dates and locations shown, and it is not warranted that they are representative of subsurface conditions at other locations and times. If, at any time, different subsurface conditions from those observed are determined to be present, we must be advised and allowed to review and revise our observations if necessary.

Florida Licensed Geology Business GB 458

END OF LOG