

Company CITY OF CAPE CORAL											
Well PRODUCTION WELL 3N											
Field NORTH											
County LEE											
State FL											
Location		2023 NE 15TH PL CAPE CORAL, FL				Other Services SEE COMMENTS					
Permanent Datum Log Measured From		GL GL		Elevation GL		Elevation K.B. D.F. G.L.					
Drilling Measured From		GL									
Date		7-JULY-2008									
Run Number		TWO									
Depth Driller		883									
Depth Logger		883									
Bottom Logged Interval		C-20' TO 12'									
Top Log Interval											
Open Pipe Size		12"									
Type Fluid		MUD									
Density / Viscosity		N/A									
Max. Recorded Temp.		N/A									
Estimated Cement Top		1200									
Time Well Ready		1215									
Time Logger on Bottom		1203									
Equipment Number		FT MWERS FULLER CHAIKEN, P									
Location		TELLEZ									
Recorded By											
Witnessed By											
Borehole Record		Borehole Record									
ONE from		Bit 9.625'		To 603'		Run No.		Bit From		To	
TWO 12"		C-ASING C-ASING		883'							
Casing Record		Size		Weight		Top		Bottom			
Surface String		20"		37.5		SURFACE		41"			
Prod. String		12"		3.75 W.T.		SURFACE		590'			
Protection String											
Liner											

<<< Fold Here >>>

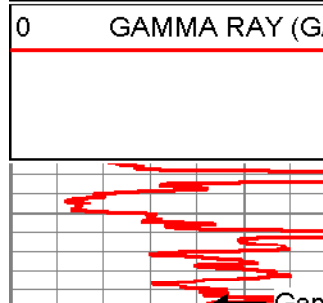
All interpretations are opinions based on inferences from electrical or other measurements and we cannot and do not guarantee the correctness of any interpretation, and we shall not, except in the case of gross or willful negligence on our part, be liable for loss, costs, damages or expenses incurred or sustained by anyone resulting from any interpretation made by any of our employees. These interpretations are also subject to our general terms and conditions set out in our current Price Schedule.

Comments

FLUID CONDUCTIVITY/TEMP

DUAL INDUCTION

MAIN PASS



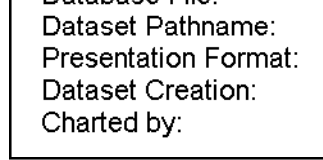
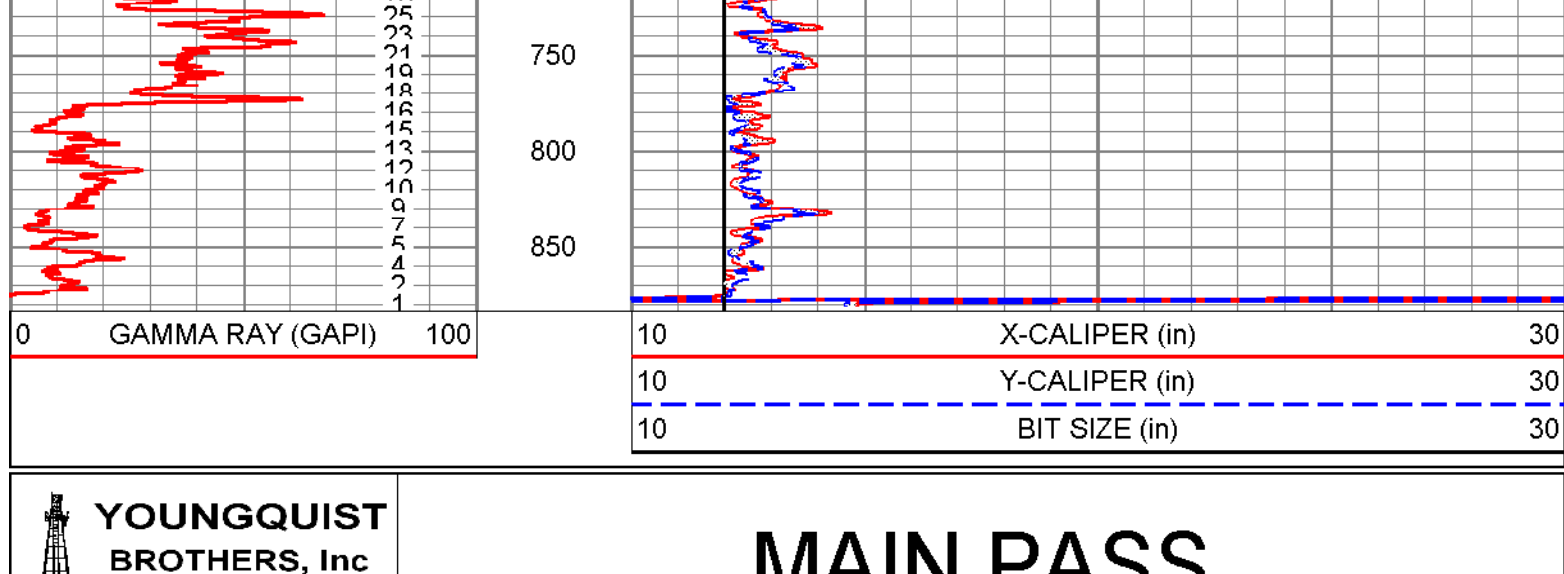
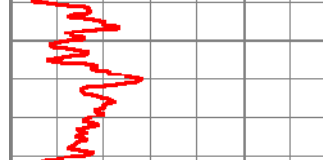
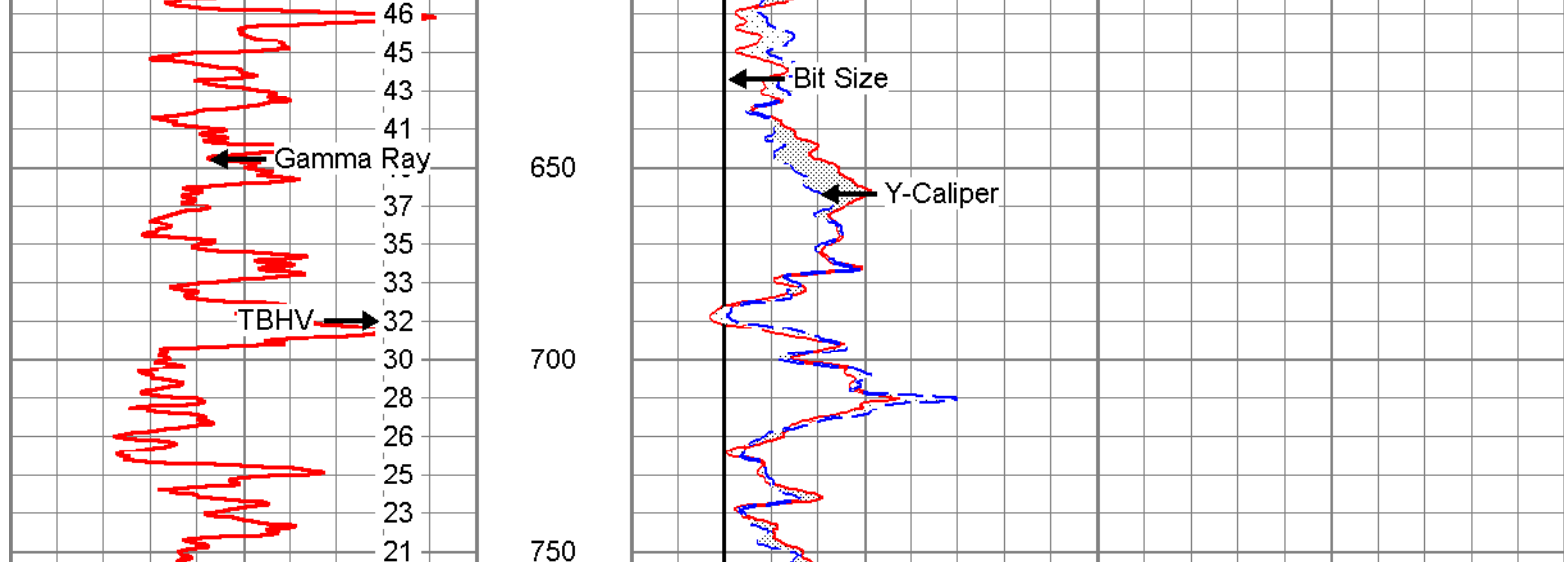
X-CALIPER (in)

Y-CALIPER (in)

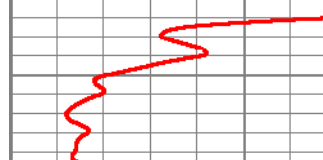
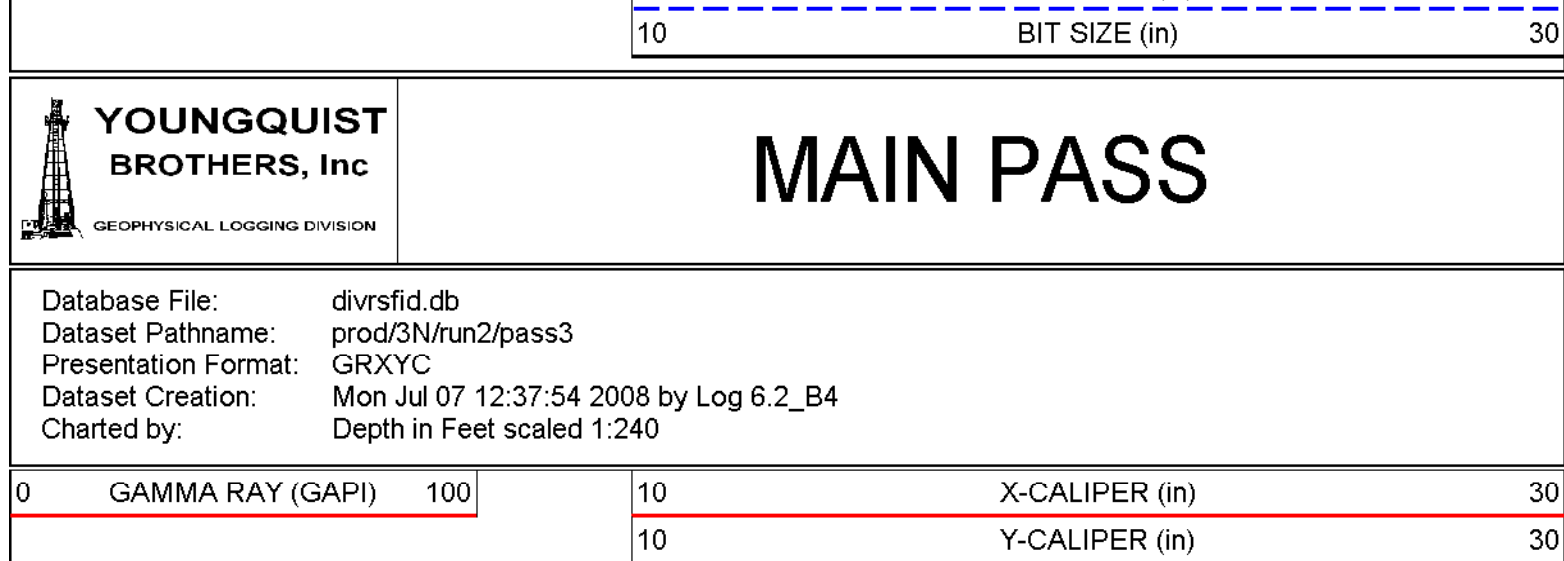
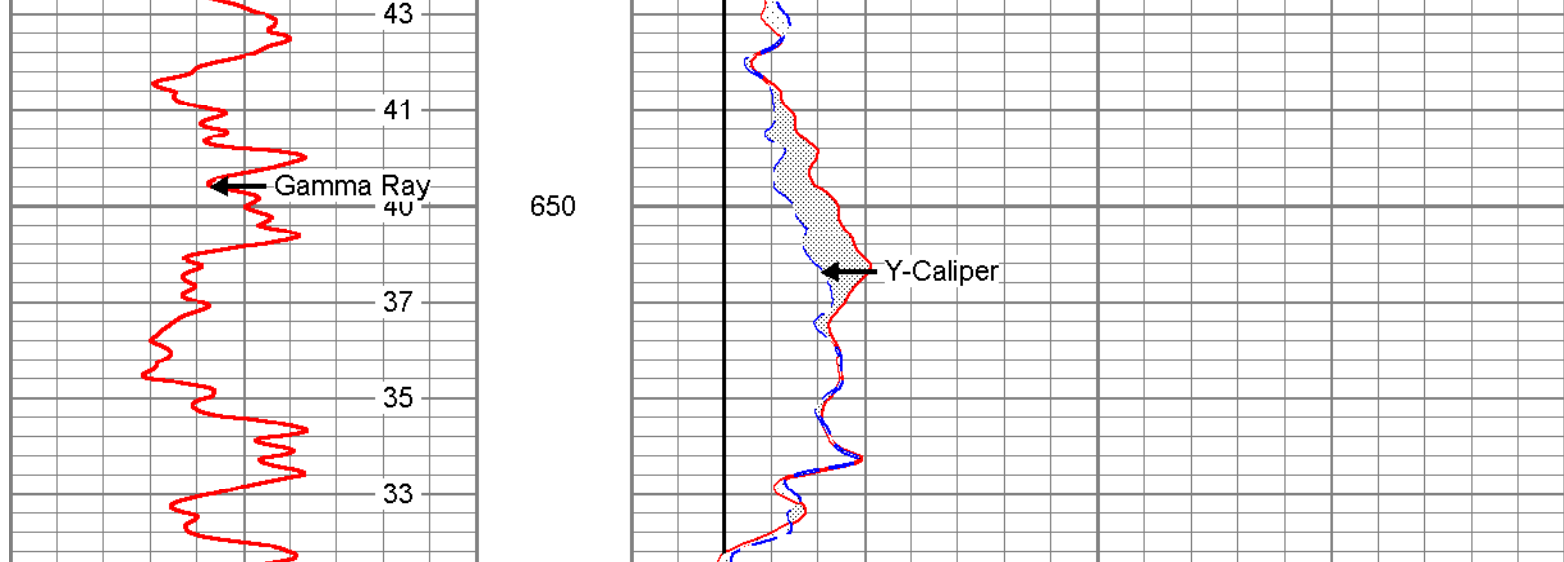
BIT SIZE (in)

Gamma Ray ←

TBHV →

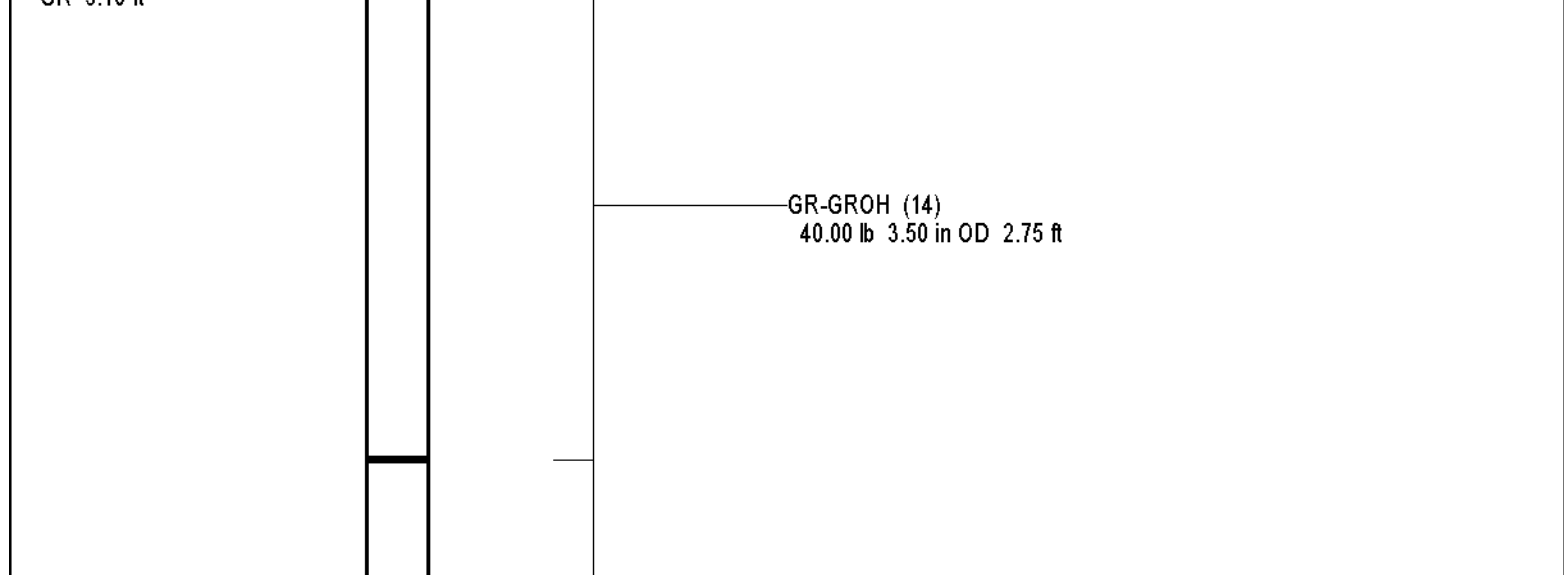
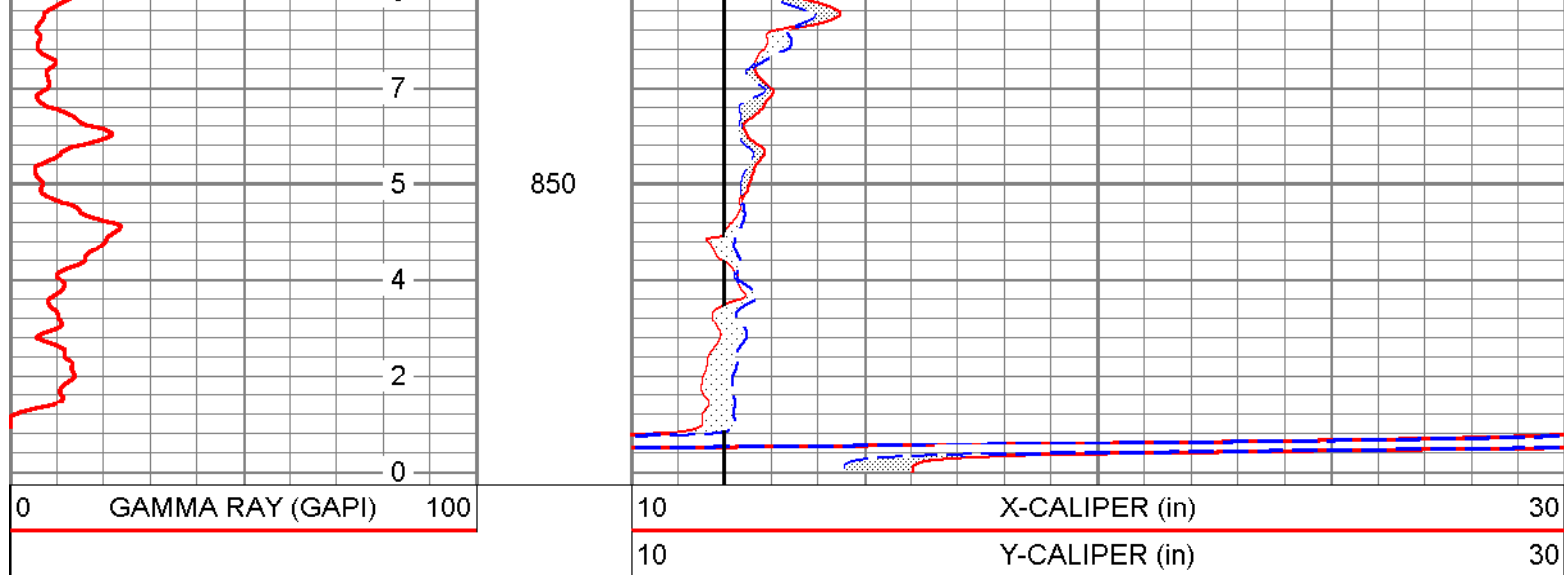
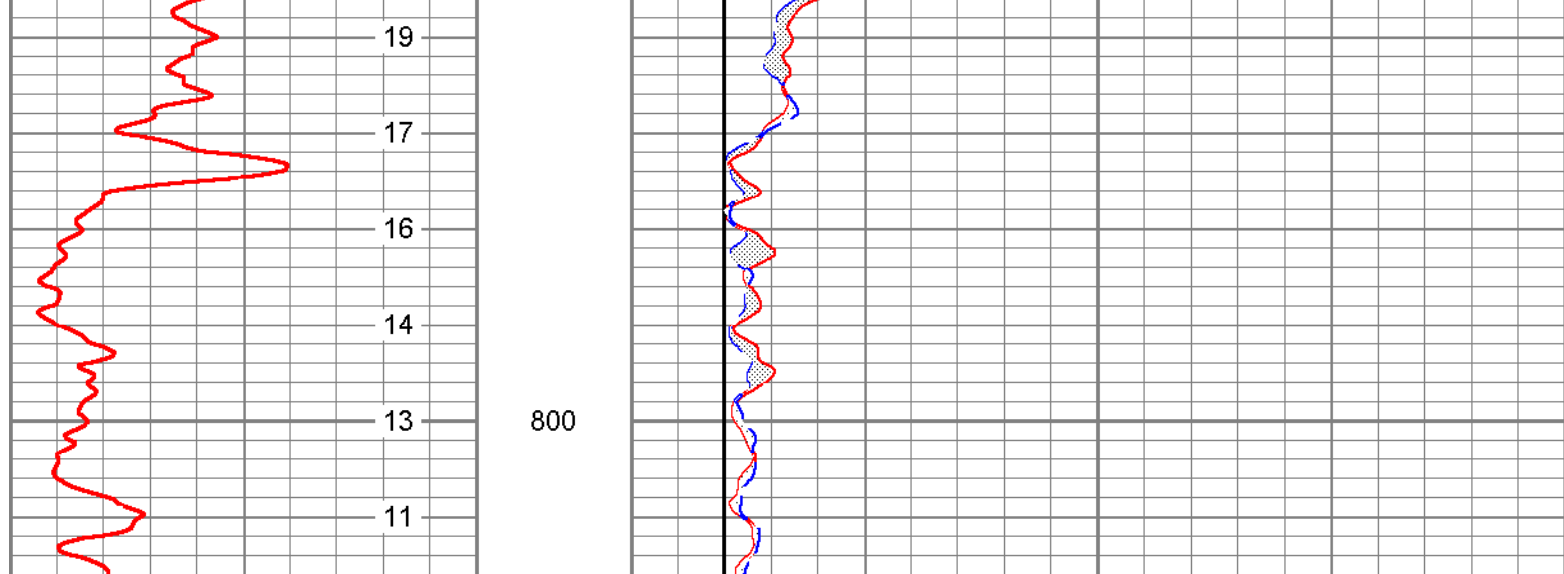
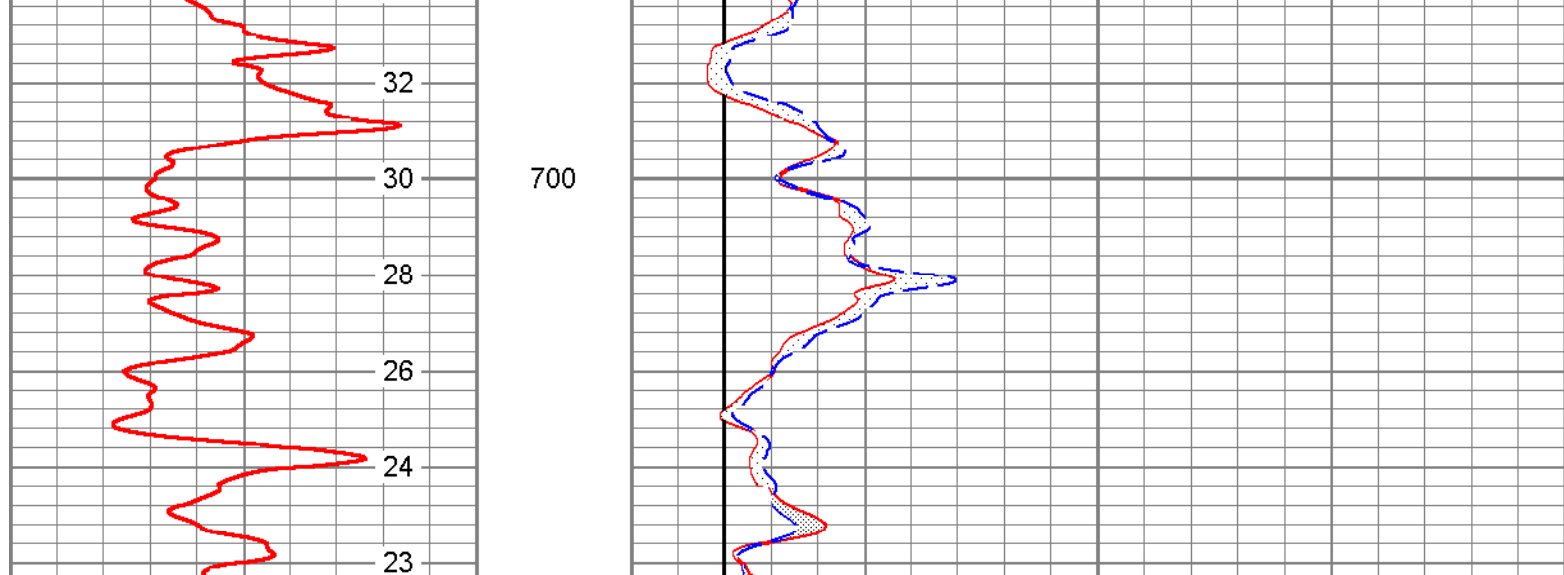
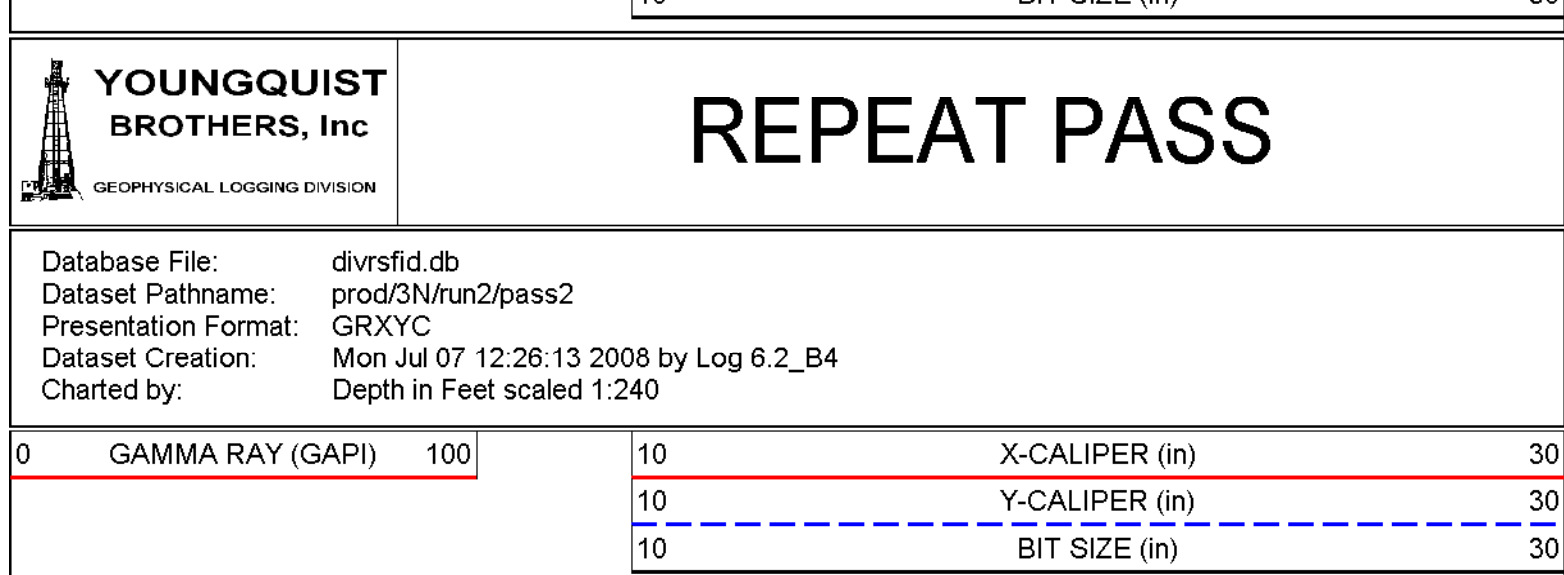
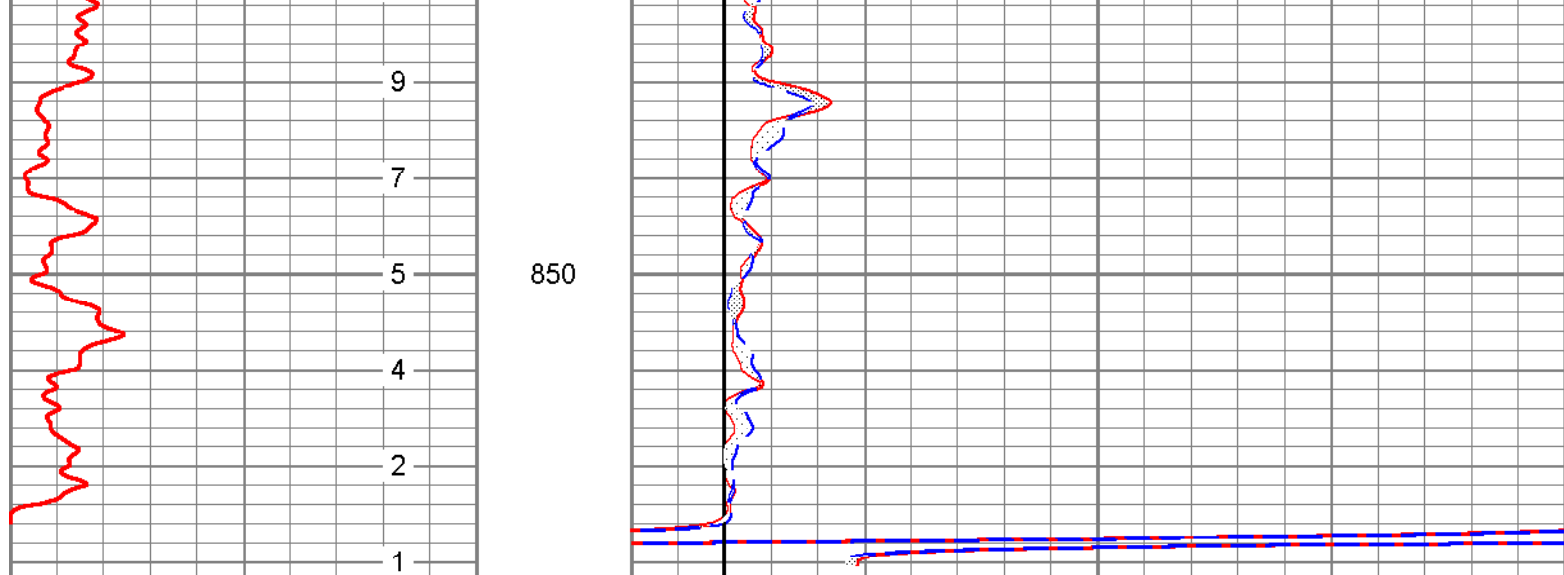
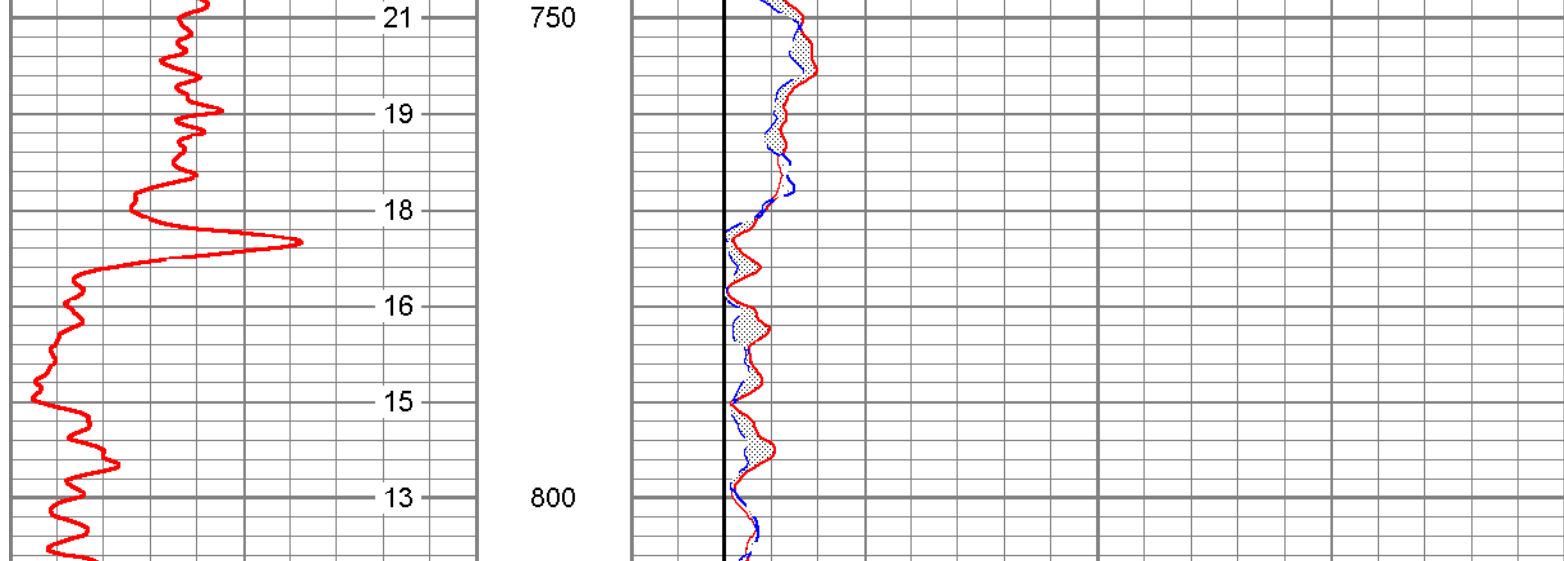
[illegible]

0	GAMMA RAY (GAPI)	100	10	10
---	------------------	-----	----	----

[illegible]

A blank 10x10 grid for graphing, consisting of 10 columns and 10 rows of squares.

23



XCAL	5.00 ft	
YCAL	5.00 ft	

[illegible][illegible][illegible]

Dataset: prod/3N/run2/pass3
Total Length: 9.35 ft
T: 235.00 s

Serial Number/Model: 01BSM-XYCSM
Performed: Mon Jul 07 12:32:00 2008

4:	in	cps	cps
5:	in	cps	cps
6:	in	cps	cps

Tool Model:	GROH
Performed:	Wed May 21 13:24:48 2008

Sensitivity:	0.8754	GAP/cps
--------------	--------	---------