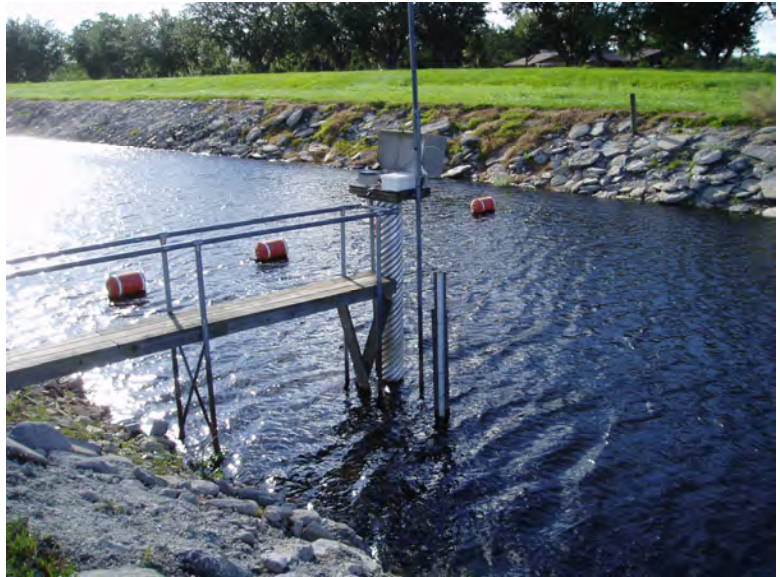




Contract # CN60744/3600000504



VERTICAL CONTROL SURVEY REPORT

**SOUTH FLORIDA WATER
MANAGEMENT DISTRICT**

FINAL

December, 2007

VERTICAL CONTROL SURVEY REPORT

Monitoring Well Reference Elevations

for:

South Florida Water Management District
3301 Gun Club Road
West Palm Beach, FL 33406

by:

WOOLPERT, INC.
Florida Certificate of Authorization # 6777
2121 Ponce de León Blvd., Suite 200
Coral Gables, Florida 33134
(305) 567-9900/fax: (305) 567-9009

Prepared by:

John A. Cestnick, PSM
Florida Professional Surveyor and Mapper # 5994

Summary of Contents

| | |
|---|-------------|
| Section 1: Vertical Control Survey Report | 8 Pages |
| Summary of Contents | 1 |
| Overview of the Project | 2 |
| List of Project Deliverables..... | 3 |
| Date of Survey..... | 3 |
| Equipment Used | 3 |
| Project Location | 4 |
| Survey Methodology | 4 |
| Summary of Leveling Results | 5 |
| Monitoring Well Site Information Summary | 7 |
| Surveyor's Notes: | 8 |
| Section 2: Monitoring Well Site Information | Pages 9-85 |
| Section 3: Monitoring Well Site Information in Table Format | Pages 86-88 |
| Section 4: New Benchmark Data Sheets | Pages 89-98 |

Overview of the Project

This survey request consisted of establishing or verifying elevations to third-order National Geodetic Survey (NGS) Standards at District Recorder Well Sites. This survey request is associated with the District's Vertical Datum Upgrade Project (VDUP).

There were two main tasks to this survey.

1. Set reference elevations and tags at each well using a local site benchmark referenced to the National Geodetic Vertical Datum of 1929 (NGVD29).
2. For those sites that did not have a local benchmark, set a concrete monument and establish elevations referencing the North American Vertical Datum of 1988 (NAVD88), and then compute a conversion NGVD29 elevation.

The project began requiring a total of six sites that needed a new local benchmark, and a total of 59 separate sites requiring tags to be placed on wells. As the project was being completed, changes to the scope of services was required due to situation found in the field. For example, some sites were identified to have missing or destroyed benchmarks, additional leveling was required, and some sites were found to have additional wells than were identified.

To address these changes, a second work-order has been assigned for these additional tasks, as well as to perform similar services at additional site locations. The original list of sites to complete include the following.

- | | | | | |
|-------------|--------------|---------------|------------|--------------|
| 1. AIR19 | 15. MOSSPK * | 29. S63-SCA | 43. TOHO4 | 57. WR8 * |
| 2. ALL1 | 16. OAKISL * | 30. SCBR | 44. TOHO5 | 58. WR9 * |
| 3. ALL2 | 17. OS181 ** | 31. SCPE | 45. TOHO6 | 59. WRLGTE * |
| 4. BFARM * | 18. OSF53 | 32. SCPN | 46. TOHO7 | |
| 5. BLACK ** | 19. REDYCK | 33. SCPS | 47. TOHO8 | |
| 6. BOG527 * | 20. REEDC | 34. SCSS | 48. TOHO10 | |
| 7. C31SW | 21. S57-SCA | 35. SW15 | 49. TOHO12 | |
| 8. CAST * | 22. S58-SCA | 36. TAFTOR ** | 50. TOHO13 | |
| 9. EXOTFI * | 23. S59-SCA | 37. TMRNCH | 51. TOHO14 | |
| 10. INRCTY | 24. S59W | 38. TB1 | 52. TOHO15 | |
| 11. KIRCOF | 25. S60-SCA | 39. TB2 | 53. TOHO16 | |
| 12. KISSD * | 26. S61-SCA | 40. TB3 | 54. TOHOE | |
| 13. KISSFS | 27. S61W | 41. TOHO1 | 55. TOHOW | |
| 14. MAKO | 28. S62-SCA | 42. TOHO2 | 56. WR6 * | |

* *Benchmark was set at site (11 total).*

** *Site was decommissioned / destroyed (3 total).*

Not part of this report are the following sites for the following reasons.

| Site | Notes: |
|--------|--|
| BFARM | <ul style="list-style-type: none"> Incorrect elevation was set on tag. This site will be included with the second work-order deliverable. |
| BLACK | <ul style="list-style-type: none"> Site was decommissioned. |
| KISSFS | <ul style="list-style-type: none"> Incorrect elevation was set on tag. This site will be included with the second work-order deliverable. |
| OS181 | <ul style="list-style-type: none"> Site was decommissioned. |
| REEDC | <ul style="list-style-type: none"> REEDC was removed from the project after the District was informed that it was completed under a different contract. |
| S61W | <ul style="list-style-type: none"> Site was overlooked. This site will be included with the second work-order deliverable. |
| TAFTOR | <ul style="list-style-type: none"> Site was decommissioned. |
| TMRNCH | <ul style="list-style-type: none"> Site was found to have existing tag, and tag elevations were verified. Tags were set by "EE & |

| Site | Notes: |
|--------|---|
| TB1 | <p>COON". GW1 was set on 5-18-05 with a verified reference elevation of 72.17, and GW2 was set on 1-6-06 with a verified reference elevation of 71.89 feet.</p> <ul style="list-style-type: none"> • Site was found to have existing tag, and tag elevations were verified. Tags were set by "K&S" dated "8-8-06". The east well was verified at 104.35 feet. The west well was verified at 104.02 feet. |
| TB2 | <ul style="list-style-type: none"> • Site was found to have existing tag, and tag elevations were verified. Tags were set by "K&S" dated "8-9-06". GW1 well was verified at 104.09 feet. GW2 well was verified at 105.24 feet. |
| TB3 | <ul style="list-style-type: none"> • TB3 was inaccessible due to high water. After discussing this with the District, it was assumed to also be completed by "K&S" as were TB1 and TB2. |
| TOHO13 | <ul style="list-style-type: none"> • Site was found to have existing tag, and tag elevations were verified. Tag was set by "K&S" dated "8-9-07". Stamped elevation was 65.099 feet. |
| WRLGTE | <ul style="list-style-type: none"> • Incorrect elevation was set on tag. This site will be included with the second work-order deliverable. |

List of Project Deliverables

In addition to four signed and sealed hard copies of this survey report, the following deliverables were also a part of this project.

1. The survey report in Adobe Acrobat format.
2. Digital photos named by sites.
3. Scanned copies of field notes.
4. Any other digital files associated with the survey.
5. Completed District benchmark description sheet for all set marks.

These digital deliverables will be delivered on CD along with the final signed and sealed copy of this report.

Date of Survey

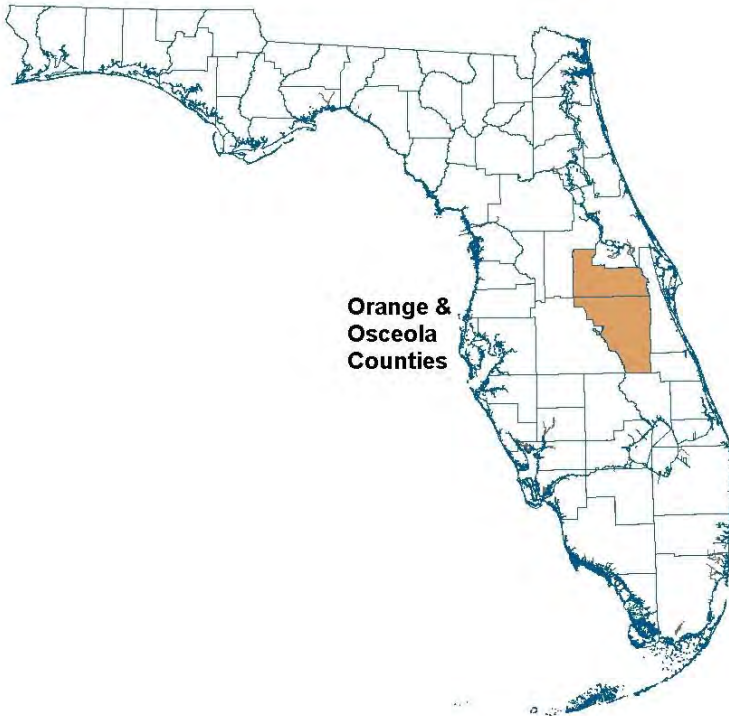
All site field operations took place between August 28 and October 19, 2007.

Equipment Used

Wild NA2002 digital levels were used for all leveling. Latitude and Longitudes were determined for each site using Trimble Pro-XR sub-meter GPS equipment. These Latitudes and Longitudes were then converted to Florida State Plane Coordinates, East Zone, using the United States Army Corps of Engineers software CORPSCON version 6.0.1.

Project Location

All well site locations were in Osceola and Orange Counties, Florida.



Survey Methodology

Woolpert began by setting concrete monuments at each of the locations that did not have a benchmark on site. Monuments consisted of an 8 inch PVC pipe, 40 inches long, filled with poured concrete with an aluminum South Florida Water Management District survey cap. Rebar rods were also added to the mixture for durability.

Following building the concrete monuments, reconnaissance was done to find existing NGS control stations. Once found, elevation were established by using two NGS stations, performing closed level loops ensuring that NGS monument published elevations matched.

At each site, Woolpert used the local site benchmark to set reference elevations for each found well. All well sites had a previously marked reference point on the well. Woolpert used the local benchmark to perform a closed loop level run from the benchmark to the reference mark to establish a NGVD29 elevation on the well reference point. If the local benchmark did not have a published NGVD29 elevation, Woolpert used the sites latitude, longitude, and NAVD88 elevation to find a NGVD29 elevation using the United States Army Corps of Engineers software CORPSCON version 6.0.1. To determine the sites benchmark latitude and longitude, Woolpert used a Trimble Pro-XR GPS receiver. This GPS receiver obtains differential GPS corrections from Coast Guard stations, resulting in horizontal accuracies of approximately 1 meter, at one sigma.

If a staff gauge existed at the site, Woolpert obtained the water level, the staff gauge reading, and

recorded the time and date of those measurements.

Following all leveling and positioning, Woolpert then attached metal tags to each found well. Each tag was stamped with: Site name, well designation, elevation, date, firm name, and reference datum (NGVD29 in all cases).

Summary of Leveling Results

BOG527 was set using NGS station L715017, a Second-Order Class I benchmark with published elevation of 92.90 feet (NAVD88), and NGS station L715018, a Second-Order Class I benchmark with published elevation of 91.84 feet (NAVD88). Leveling began at station L715017, passed through BOG527, and ended on L715018 with a leveled elevation of 91.88. Total leveling distance was 5.8 miles resulting in a closure of 0.04 (0.07 allowable). Resulting elevation for BOG527 was 80.95 feet NAVD88. This was converted using the United States Army Corps of Engineers software CORPSCON version 6.0.1 to derive a NGVD29 elevation of 81.88 feet.

CAST was set using NGS station Q507, a Second-Order Class I benchmark with published elevation of 73.65 feet (NAVD88), and NGS station P507, a Second-Order Class I benchmark with published elevation of 76.01 feet (NAVD88). Leveling began at station Q507, passed through CAST, and ended on P507 with a leveled elevation of 76.01. Total leveling distance was 1.65 miles resulting in a closure of 0.04 (0.04 allowable). Resulting elevation for CAST was 70.65 feet NAVD88. This was converted using the United States Army Corps of Engineers software CORPSCON version 6.0.1 to derive a NGVD29 elevation of 71.85 feet.

EXOFTI was set using NGS station S507, a Second-Order Class I benchmark with published elevation of 73.08 feet (NAVD88), and NGS station R507, a Second-Order Class I benchmark with published elevation of 70.67 feet (NAVD88). Leveling began at station S507, passed through EXOFTI, and ended on R507 with a leveled elevation of 70.65. Total leveling distance was 1.54 miles resulting in a closure of 0.02 (0.04 allowable). Resulting elevation for EXOFTI was 70.92 feet NAVD88. This was converted using the United States Army Corps of Engineers software CORPSCON version 6.0.1 to derive a NGVD29 elevation of 72.14 feet.

KISSD was set using NGS station F514, a Second-Order Class I benchmark with published elevation of 74.41 feet (NAVD88), and NGS station N512, a Second-Order Class I benchmark with published elevation of 65.69 feet (NAVD88). Leveling began at station F514, passed through KISSD, and ended on N512 with a leveled elevation of 65.69. Total leveling distance was 1.46 miles resulting in a closure of 0.00 (0.04 allowable). Resulting elevation for KISSD was 60.48 feet NAVD88. This was converted using the United States Army Corps of Engineers software CORPSCON version 6.0.1 to derive a NGVD29 elevation of 61.42 feet.

MOSSPK was set using NGS station R575, a Second-Order Class I benchmark with published elevation of 66.29 feet (NAVD88), and NGS station C802-008, a Second-Order Class I benchmark with published elevation of 66.88 feet (NAVD88). Leveling began at station R575, passed through MOSSPK, and ended on C802-008 with a leveled elevation of 66.91. Total leveling distance was 0.98 miles resulting in a closure of 0.03 (0.03 allowable). Resulting elevation for MOSSPK was 67.49 feet NAVD88. This was converted using the United States Army Corps of Engineers software CORPSCON version 6.0.1 to derive a NGVD29 elevation of 68.53 feet.

OAKISL was set using NGS station D466, a Second-Order Class I benchmark with published elevation of 155.80 feet (NAVD88), and NGS station I4-72A42E RM2, a Second-Order Class I benchmark with

published elevation of 189.29 feet (NAVD88). Leveling began at station D466, passed through OAKISL, and ended on I4-72A42E RM2 with a leveled elevation of 189.33. Total leveling distance was 6.7 miles resulting in a closure of 0.04 (0.08 allowable). Resulting elevation for OAKISL was 108.24 feet NAVD88. This was converted using the United States Army Corps of Engineers software CORPSCON version 6.0.1 to derive a NGVD29 elevation of 109.10 feet.

WR6 was set using NGS station OS134, a Second-Order Class I benchmark with published elevation of 70.65 feet (NAVD88), and NGS station OS135, a Second-Order Class I benchmark with published elevation of 64.75 feet (NAVD88). Leveling began at station OS134, passed through WR6, and ended on OS135 with a leveled elevation of 64.71. Total leveling distance was 12.8 miles resulting in a closure of 0.06 (0.11 allowable). Resulting elevation for WR6 was 63.78 feet NAVD88. This was converted using the United States Army Corps of Engineers software CORPSCON version 6.0.1 to derive a NGVD29 elevation of 64.82 feet.

WR8 was set using NGS station OS134, a Second-Order Class I benchmark with published elevation of 70.65 feet (NAVD88), and NGS station OS135, a Second-Order Class I benchmark with published elevation of 64.75 feet (NAVD88). Leveling began at station OS134, passed through WR8, and ended on OS135 with a leveled elevation of 64.71. Total leveling distance was 11.6 miles resulting in a closure of 0.06 (0.10 allowable). Resulting elevation for WR8 was 69.79 feet NAVD88. This was converted using the United States Army Corps of Engineers software CORPSCON version 6.0.1 to derive a NGVD29 elevation of 70.83 feet.

WR9 was set using NGS station OS134, a Second-Order Class I benchmark with published elevation of 70.65 feet (NAVD88), and NGS station OS135, a Second-Order Class I benchmark with published elevation of 64.75 feet (NAVD88). Leveling began at station OS134, passed through WR9, and ended on OS135 with a leveled elevation of 64.71. Total leveling distance was 11.6 miles resulting in a closure of 0.06 (0.10 allowable). Resulting elevation for WR9 was 69.32 feet NAVD88. This was converted using the United States Army Corps of Engineers software CORPSCON version 6.0.1 to derive a NGVD29 elevation of 70.36 feet.

Monitoring Well Site Information Summary

In Section 2, all well site information is presented in the same format.

EXAMPLE:

| Site Name | | Sensor | | |
|---|-----------------------|------------------------|------------------------|----------------|
| Example | | GW1 | | |
| Latitude | Longitude | Northing | Easting | |
| 28° 23' 31.937" | 81° 22' 31.937" | 1472251 | 538267 | |
| Section | Township | Range | County | Quad |
| 13 | 24 | 29 | Orange | Lake Jessamine |
| Benchmark Information: | | | | |
| Name | Existing / Set | NAVD88 | NGVD29 | |
| BOG527 | Set | 80.851 | 81.876 | |
| Reference Point Information: | | | | |
| Stamped Elevation (NGVD29) | Stamped Date | By Firm | | |
| 87.50 | 9-21-07 | Woolpert, Inc. | | |
| Note: Reference mark at edge of wood as marked. | | | | |
| Staff Gauge Information: | | | | |
| Water Elevation (NGVD29) | Gauge Reading | Time of Reading | Date of Reading | |
| 79.928 | 80.05 | 09:25 | 9-21-07 | |

NOTES:

1. Latitude and longitude were derived at the benchmark location, and is given to assist in locating the site. It is not meant to accurately locate each well.
2. The Northing and Easting were obtained by using CORPSCON to convert the latitude and longitude to Florida State Plane Coordinates, East Zone, Adjustment of 1990 (NAD83/90) HARN.
3. All measurements and elevations are in feet unless otherwise noted.
4. Reference point elevations were determined by using the stated NGVD29 elevation. NGVD29 elevations were calculated using CORPSCON to convert the stated NAVD88 elevation. In some cases the local benchmark only had a NGVD29 elevation, so it was used and no NAVD88 elevation is stated.

Surveyor's Notes:

THIS SURVEY IS NOT VALID WITHOUT THE SIGNATURE AND ORIGINAL RAISED SEAL OF A FLORIDA LICENSED SURVEYOR AND MAPPER.

THIS REPORT OF SURVEY CONSISTS OF FOUR SECTIONS AS OUTLINED WITHIN THE SUMMARY OF CONTENTS AND IS NOT VALID UNLESS ATTACHED TO THE OTHERS IN THEIR ENTIRETY.

ADDITIONS OR DELETIONS TO SURVEY MAPS AND REPORTS BY OTHER THAN THE SIGNING PARTY OR PARTIES IS PROHIBITED WITHOUT THE WRITTEN CONSENT OF THE SIGNING PARTY OR PARTIES.

Surveyor and Mapper in Responsible Charge:

John A. Cestnick

Professional Surveyor and Mapper,

License Number: 5994

Signed: _____
(For, and on behalf of the firm Woolpert, Inc.)

Seal:

Section 2: Monitoring Well Site Information

| Site Name | | Sensor | | |
|-----------|--|--------|--|--|
| INRCTY | | GW2 | | |

| | | | | |
|-----------------------------------|-------------------------------------|----------------------------|--------------------------|----------------------------------|
| Latitude 28° 15' 21.33" | Longitude 81° 30' 13.704" | Northing 1426088 | Easting 493978 | |
| Section 3 | Township 26 | Range 28 | County Osceola | Quad Intercession City |

Benchmark Information:

| | | | |
|------------------------------|-----------------------------------|---------------------|-------------------------|
| Name OSF WELLS BM1 | Existing / Set Existing | NAVD88 NA | NGVD29 68.470 |
|------------------------------|-----------------------------------|---------------------|-------------------------|

Reference Point Information:

| | | |
|--|--------------------------------|----------------------------------|
| Stamped Elevation (NGVD29) 71.13 | Stamped Date 9-20-07 | By Firm Woolpert, Inc. |
|--|--------------------------------|----------------------------------|

Note: Reference mark at top of PVC pipe as marked.

Staff Gauge Information:

| | | | |
|---------------------------------------|----------------------------|------------------------------|------------------------------|
| Water Elevation (NGVD29) NA | Gauge Reading NA | Time of Reading NA | Date of Reading NA |
|---------------------------------------|----------------------------|------------------------------|------------------------------|

To Reach Description:

From the intersection of US192 and US17 in the town of Kissimmee, head south on US17 for 7.80 miles to Nocatee Street. Turn left and head south on Nocatee Street for .23 of a mile to Wile Avenue. Turn left and head east on Wile Avenue for 0.12 of a mile to the iron gate, go through the gate and head south for 241 feet. Well site is on the east side of dirt path in the open field.

Sensor Well Area:



Sensor Well:



Tag: @ base of pole.



Bench Mark:



Bench Mark:



Tag Close Up:



| Site Name | | Sensor | | |
|-----------|--|--------|--|--|
| INRCTY | | GW3 | | |

| | | | | |
|-----------------------------------|-------------------------------------|----------------------------|--------------------------|----------------------------------|
| Latitude 28° 15' 21.33" | Longitude 81° 30' 13.704" | Northing 1426088 | Easting 493978 | |
| Section 3 | Township 26 | Range 28 | County Osceola | Quad Intercession City |

Benchmark Information:

| | | | |
|------------------------------|-----------------------------------|---------------------|-------------------------|
| Name OSF WELLS BM1 | Existing / Set Existing | NAVD88 NA | NGVD29 68.470 |
|------------------------------|-----------------------------------|---------------------|-------------------------|

Reference Point Information:

| | | |
|--|--------------------------------|----------------------------------|
| Stamped Elevation (NGVD29) 71.98 | Stamped Date 9-20-07 | By Firm Woolpert, Inc. |
|--|--------------------------------|----------------------------------|

Note: Reference point at top of PVC pipe as marked.

Staff Gauge Information:

| | | | |
|---------------------------------------|----------------------------|------------------------------|------------------------------|
| Water Elevation (NGVD29) NA | Gauge Reading NA | Time of Reading NA | Date of Reading NA |
|---------------------------------------|----------------------------|------------------------------|------------------------------|

To Reach Description:

From the intersection of US192 and US17 in the town of Kissimmee, head south on US17 for 7.80 miles to Nocatee Street. Turn left and head south on Nocatee Street for .23 of a mile to Wile Avenue. Turn left and head east on Wile Avenue for 0.12 of a mile to the iron gate, go through the gate and head south for 241 feet. Well site is on the east side of dirt path in the open field.

Sensor Well Area:



Sensor Well:



Tag:



Bench Mark:



Bench Mark:



Tag Close Up:



| Site Name | | Sensor | | |
|-----------|--|--------|--|--|
| INRCTY | | GW4 | | |

| | | | | |
|-----------------------------------|-------------------------------------|----------------------------|--------------------------|----------------------------------|
| Latitude 28° 15' 21.33" | Longitude 81° 30' 13.704" | Northing 1426088 | Easting 493978 | |
| Section 3 | Township 26 | Range 28 | County Osceola | Quad Intercession City |

Benchmark Information:

| | | | |
|------------------------------|-----------------------------------|---------------------|-------------------------|
| Name OSF WELLS BM1 | Existing / Set Existing | NAVD88 NA | NGVD29 68.470 |
|------------------------------|-----------------------------------|---------------------|-------------------------|

Reference Point Information:

| | | |
|--|--------------------------------|----------------------------------|
| Stamped Elevation (NGVD29) 72.53 | Stamped Date 9-20-07 | By Firm Woolpert, Inc. |
|--|--------------------------------|----------------------------------|

Note: Reference point at top of PVC pipe as marked.

Staff Gauge Information:

| | | | |
|---------------------------------------|----------------------------|------------------------------|------------------------------|
| Water Elevation (NGVD29) NA | Gauge Reading NA | Time of Reading NA | Date of Reading NA |
|---------------------------------------|----------------------------|------------------------------|------------------------------|

To Reach Description:

From the intersection of US192 and US17 in the town of Kissimmee, head south on US17 for 7.80 miles to Nocatee Street. Turn left and head south on Nocatee Street for .23 of a mile to Wile Avenue. Turn left and head east on Wile Avenue for 0.12 of a mile to the iron gate, go through the gate and head south for 241 feet. Well site is on the east side of dirt path in the open field.

Sensor Well Area:



Sensor Well:



Tag:



Bench Mark:



Bench Mark:



Tag Close Up:



| Site Name | | Sensor | | |
|-----------|--|--------|--|--|
| INRCTY | | GW5 | | |

| | | | | |
|------------------------------------|-------------------------------------|----------------------------|--------------------------|----------------------------------|
| Latitude 28° 15' 21.338" | Longitude 81° 30' 13.704" | Northing 1426088 | Easting 493978 | |
| Section 3 | Township 26 | Range 28 | County Osceola | Quad Intercession City |

Benchmark Information:

| | | | |
|------------------------------|-----------------------------------|---------------------|-------------------------|
| Name OSF WELLS BM1 | Existing / Set Existing | NAVD88 NA | NGVD29 68.470 |
|------------------------------|-----------------------------------|---------------------|-------------------------|

Reference Point Information:

| | | |
|--|--------------------------------|----------------------------------|
| Stamped Elevation (NGVD29) 72.10 | Stamped Date 9-20-07 | By Firm Woolpert, Inc. |
|--|--------------------------------|----------------------------------|

Note: Reference point at top of PVC pipe as marked.

Staff Gauge Information:

| | | | |
|---------------------------------------|----------------------------|------------------------------|------------------------------|
| Water Elevation (NGVD29) NA | Gauge Reading NA | Time of Reading NA | Date of Reading NA |
|---------------------------------------|----------------------------|------------------------------|------------------------------|

To Reach Description:

From the intersection of US192 and US17 in the town of Kissimmee, head south on US17 for 7.80 miles to Nocatee Street. Turn left and head south on Nocatee Street for .23 of a mile to Wile Avenue. Turn left and head east on Wile Avenue for 0.12 of a mile to the iron gate, go through the gate and head south for 241 feet. Well site is on the east side of dirt path in the open field.

Sensor Well Area:



Sensor Well:



Tag:



Bench Mark:



Bench Mark:



Tag Close Up:



| Site Name | | Sensor | |
|-----------|--|--------|--|
| INRCTY | | GW6 | |

| | | | |
|------------------------------------|-------------------------------------|----------------------------|----------------------------------|
| Latitude 28° 15' 21.338" | Longitude 81° 30' 13.704" | Northing 1426088 | Easting 493978 |
| Section 3 | Township 26 | Range 28 | County Osceola |
| | | | Quad Intercession City |

Benchmark Information:

| | | | |
|------------------------------|-----------------------------------|---------------------|-------------------------|
| Name OSF WELLS BM1 | Existing / Set Existing | NAVD88 NA | NGVD29 68.470 |
|------------------------------|-----------------------------------|---------------------|-------------------------|

Reference Point Information:

| | | |
|--|--------------------------------|----------------------------------|
| Stamped Elevation (NGVD29) 71.23 | Stamped Date 9-20-07 | By Firm Woolpert, Inc. |
|--|--------------------------------|----------------------------------|

Note: Reference point at top of PVC pipe as marked.

Staff Gauge Information:

| | | | |
|---------------------------------------|----------------------------|------------------------------|------------------------------|
| Water Elevation (NGVD29) NA | Gauge Reading NA | Time of Reading NA | Date of Reading NA |
|---------------------------------------|----------------------------|------------------------------|------------------------------|

To Reach Description:

From the intersection of US192 and US17 in the town of Kissimmee, head south on US17 for 7.80 miles to Nocatee Street. Turn left and head south on Nocatee Street for .23 of a mile to Wile Avenue. Turn left and head east on Wile Avenue for 0.12 of a mile to the iron gate, go through the gate and head south for 241 feet. Well site is on the east side of dirt path in the open field.

Sensor Well Area:



Sensor Well:



Tag: @ base of pole.



Bench Mark:



Bench Mark:



Tag Close Up:



INRCTY GW 6

ELEV. 71.23

DATE 9/20/07

BY WOOLPERT

NAVD

NGVD 29

INRCTY GW 5

ELEV. 72.10

DATE 9 20 07

BY WOOLPERT

NAVD

NGVD 29

INRCTY GW 4
ELEV. 72.53
DATE 9 20 07
BY WOOLPERT
NAVD NGVD 29

INRCTY GW 3

ELEV. 71.98

DATE 9 20 07

BY WOOLPERT

NAVD

NGVD 29

INRGTY GW2

ELEV. 71.13

DATE .9 20 07

BY WOODLPERT

NAVD

NGVD 29

INRCTY GW 1

ELEV. 71.17

DATE 9 20 07

BY WOOLPERT

NAVD

NGVD 29





OSF-100





ELEV. 72.15
DATE 10.07
BY 1001/10/10
NAVD
NGVD

19

INRCTY - GW 5
ELEV. 72.10
+ DATE 9 20 07
BY W. OLPERT
NAVD NGVD 29

1400

1400

↑

IN RCT Y 6 W 4
ELEV. 72.53
DATE 9 20 07
BY WOODL PER T
NAVD NGVD 29

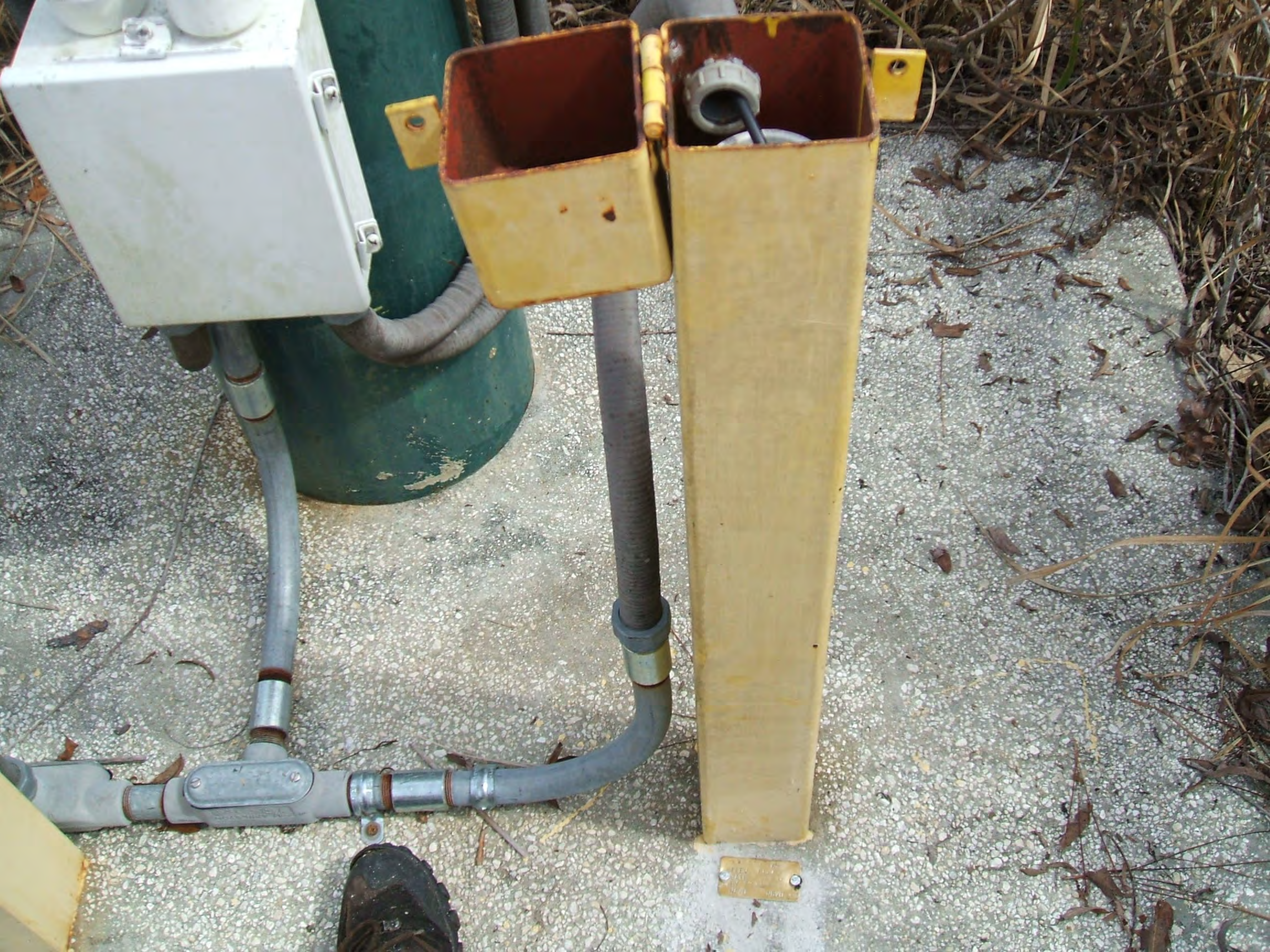


USA
D

PROPERTY GN 3
ELEV 71.93
DATE 9/20/07
BY WOOLPERT
NAVD NGVD 29

K







GW 2



Rugged Cable

24 AWG 6

AWG 500



INDUSTRIAL W 7
ELEV. 722.53
DATE 7-20-07
BY WJL/REBT
NAVD NGVD 49



GW4

GW3



O.S.F.
WELLS
BM.1
2003





ELEV
DATE
BY
NAVD NGVD

Monitoring Well Field Data Sheet

SFWMD #067411

Site/Station Designation: INRCTY GW 1

Date: 9-20-07

Crew: RODRIGUEZ / MCLARTNEY

Bench Mark Used:

| Name stamp | Date stamp | EL NAVD 88 | EL NGVD 29 | Sign Present |
|--------------|------------|------------|------------|--------------|
| OSFWELLS BMI | 2003 | - | 68.470 | NO |

Level Setup:

| STA | BS | HI | FS | NGVD29 EL | DIST & REM |
|--------------|-------|--------|-------|-----------|------------|
| OSFWELLS BMI | | | | 68.470 | |
| | 4.827 | 73.297 | | | 14.91 |
| GW 1 | | | 2.128 | 71.169 | 17.74 |
| | 2.096 | 73.265 | | | 18.52 |
| OSFWELLS BMI | | | 4.793 | 68.472 | 15.63 |

Tag Check List:

- Stamp Site/Station Designation INRCTY GW 1 Bench Mark close
- Stamp Elevation in NGVD 29 71.17 Bench Mark standing
- Stamp Date 9 20 07 M. Well tag close
- Stamp By Woolpert ✓ M. Well standing
- Stamp Datum (NGVD 29) ✓ M. Well Area
- Scratch Old Tag ✓

Photo Check List:

| | |
|--------|------|
| Photo# | 1480 |
| Photo# | 1481 |
| Photo# | 1482 |
| Photo# | 1483 |
| Photo# | 1494 |

Staff Gauge:

| Site Name | Water Elev. | Gauge Reading | Time Meas. | Date Meas. |
|-----------|-------------|---------------|------------|------------|
| | | | | |

Latitude and Longitude:

| | |
|--|--|
| | |
|--|--|

1426087.91

493977.82

Site Description, Comments, or Remarks:

DOES NOT MATCH OLD WELL REFERENCE ELEV.

Monitoring Well Field Data Sheet

SFWMD #067411

Site/Station Designation: INRCTY GWZ

Date: 9-20-07

Crew: RODRIGUEZ/MCCARTNEY

Bench Mark Used:

| Name stamp | Date stamp | EL NAVD 88 | EL NGVD 29 | Sign Present |
|-------------|------------|------------|------------|--------------|
| OSWELLS BMI | 2003 | | 68.470 | NO |

Level Setup:

| STA | BS | HI | FS | NGVD29 EL | DIST & REM |
|-------------|-------|---------|-------|-----------|------------|
| OSWELLS BMI | | | | 68.470 | |
| | 4.896 | 73.366 | | | 14.87 |
| GWZ | | | 2.231 | 71.1367 | 17.92 |
| | 2.160 | 73.2967 | | | 17.88 |
| OSWELLS BMI | | | 4.825 | 68.4742 | 14.93 |
| | | | | | |

Tag Check List:

- Stamp Site/Station Designation INRCTY GWZ Bench Mark close
- Stamp Elevation in NGVD 29 71.13 Bench Mark standing
- Stamp Date 9 20 07 M. Well tag close
- Stamp By Woolpert ✓ M. Well standing
- Stamp Datum (NGVD 29) ✓ M. Well Area
- Scratch Old Tag ✓

Photo Check List:

| | |
|--------|------|
| Photo# | 1480 |
| Photo# | 1481 |
| Photo# | 1484 |
| Photo# | 1485 |
| Photo# | 1494 |

Staff Gauge:

| Site Name | Water Elev. | Gauge Reading | Time Meas. | Date Meas. |
|-----------|-------------|---------------|------------|------------|
| — | — | — | — | — |

Latitude and Longitude:

| | |
|--|--|
| | |
|--|--|

1426087.91

493977.82

Site Description, Comments, or Remarks:

DOES NOT MATCH OLD WELL REFERENCE
ELEV

Monitoring Well Field Data Sheet

SFWMD #067411

Site/Station Designation: INRCTY GW3 OSF99

Date: 9-20-07

Crew: RODRIGUEZ / MCCARTNEY

Bench Mark Used:

| Name stamp | Date stamp | EL NAVD 88 | EL NGVD 29 | Sign Present |
|--------------|------------|------------|------------|--------------|
| OSWELLS B.M1 | 2003 | - | 68.470 | NO |

Level Setup:

| STA | BS | HI | FS | NGVD29 EL | DIST & REM |
|--------------|-------|--------|-------|-----------|------------|
| OSWELLS B.M1 | | | | 68.470 | |
| | 4.905 | 73.375 | | | 15.05 |
| GW3 | | | 1.394 | 71.982 | 15.85 |
| | 1.388 | 73.349 | | | 15.62 |
| B.M1 | | | 4.884 | 68.4665 | 15.02 |

Tag Check List:

Photo Check List:

- Stamp Site/Station Designation INRCTY GW3 Bench Mark close
- Stamp Elevation in NGVD 29 71.98 Bench Mark standing
- Stamp Date 9 20 07 M. Well tag close
- Stamp By Woolpert / M. Well standing
- Stamp Datum (NGVD 29) / M. Well Area
- Scratch Old Tag /

| | |
|--------|------|
| Photo# | 1480 |
| Photo# | 1481 |
| Photo# | 1486 |
| Photo# | 1487 |
| Photo# | 1494 |

Staff Gauge:

| Site Name | Water Elev. | Gauge Reading | Time Meas. | Date Meas. |
|-----------|-------------|---------------|------------|------------|
| — | — | — | — | — |

Latitude and Longitude:

| | |
|------------|-----------|
| 1426087.91 | 493977.82 |
|------------|-----------|

Site Description, Comments, or Remarks:

DOES NOT MATCH OLD WELL REFERENCE
ELEV

Monitoring Well Field Data Sheet

SFWMD #067411

Site/Station Designation: INRCTY GW4 OSF 98

Date: 9-20-07

Crew: RODRIGUZ/McCARTNEY

Bench Mark Used:

| Name stamp | Date stamp | EL NAVD 88 | EL NGVD 29 | Sign Present |
|------------|------------|------------|------------|--------------|
| OSWELLSBM1 | 2003 | - | 68.470 | NO |

Level Setup:

| STA | BS | HI | FS | NGVD29 EL | DIST & REM |
|------------|-------|--------|-------|-----------|------------|
| OSWELLSBM1 | | | | 68.470 | |
| | 4.485 | 73.355 | | | 15.04 |
| GW4 | | | .823 | 72.532 | 15.86 |
| | .838 | 73.37 | | | 15.70 |
| OSWELLSBM1 | | | 4.898 | 68.472 | 14.84 |
| | | | | | |

Tag Check List:

- Stamp Site/Station Designation INRCTY GW4 Bench Mark close
- Stamp Elevation in NGVD 29 72.53 Bench Mark standing
- Stamp Date 9 20 07 M. Well tag close
- Stamp By Woolpert / M. Well standing
- Stamp Datum (NGVD 29) / M. Well Area
- Scratch Old Tag /

Photo Check List:

| | |
|--------|------|
| Photo# | 1480 |
| Photo# | 1481 |
| Photo# | 1488 |
| Photo# | 1489 |
| Photo# | 1494 |

Staff Gauge:

| Site Name | Water Elev. | Gauge Reading | Time Meas. | Date Meas. |
|-----------|-------------|---------------|------------|------------|
| | | | | |

Latitude and Longitude:

| | |
|------------|-----------|
| 1426087.91 | 493977.82 |
|------------|-----------|

Site Description, Comments, or Remarks:

DOES NOT MATCH OLD WELL REFERENCE ELEV

Monitoring Well Field Data Sheet

SFWMD #067411

Site/Station Designation: INRCTY GW5 OSF 97

Date: 9-20-07

Crew: RODRIGUZ/McCARTNEY

Bench Mark Used:

| Name stamp | Date stamp | EL NAVD 88 | EL NGVD 29 | Sign Present |
|---------------------|-------------|------------|---------------|--------------|
| <u>OSWELLS BM 1</u> | <u>2003</u> | — | <u>68.470</u> | <u>NO</u> |

Level Setup:

| STA | BS | HI | FS | NGVD29 EL | DIST & REM |
|---------------------|--------------|---------------|--------------|---------------|--------------|
| <u>OSWELLS BM 1</u> | | | | <u>68.470</u> | |
| | <u>4.900</u> | <u>73.370</u> | | | <u>14.83</u> |
| <u>GW5</u> | | | <u>1.272</u> | <u>72.098</u> | <u>16.00</u> |
| | <u>1.271</u> | <u>73.369</u> | | | <u>16.10</u> |
| <u>OSWELLS BM 1</u> | | | <u>4.898</u> | <u>68.471</u> | <u>14.84</u> |

Tag Check List:

Photo Check List:

- Stamp Site/Station Designation INRCTY GW5 Bench Mark close
- Stamp Elevation in NGVD 29 72.10 Bench Mark standing
- Stamp Date 9 20 07 M. Well tag close
- Stamp By Woolpert / M. Well standing
- Stamp Datum (NGVD 29) / M. Well Area
- Scratch Old Tag /

| | |
|--------|-------------|
| Photo# | <u>1480</u> |
| Photo# | <u>1481</u> |
| Photo# | <u>1490</u> |
| Photo# | <u>1491</u> |
| Photo# | <u>1494</u> |

Staff Gauge:

| Site Name | Water Elev. | Gauge Reading | Time Meas. | Date Meas. |
|-----------|-------------|---------------|------------|------------|
| — | — | — | — | — |

Latitude and Longitude:

| | |
|--|--|
| | |
|--|--|

1426087.91

493977.82

Site Description, Comments, or Remarks:

DOES NOT MATCH OLD WELL REFERENCE ELEV.

Monitoring Well Field Data Sheet

SFWMD #067411

Site/Station Designation: INRCITY GW6 OSF 100 Date: 9-20-07

Crew: RODRIGUEZ/MCLARTNEY

Bench Mark Used:

| Name stamp | Date stamp | EL NAVD 88 | EL NGVD 29 | Sign Present |
|-------------------|-------------|------------|---------------|--------------|
| <u>OSWELLSBM1</u> | <u>2003</u> | <u>-</u> | <u>68.470</u> | <u>NO</u> |

Level Setup:

| STA | BS | HI | FS | NGVD29 EL | DIST & REM |
|-------------------|--------------|---------------|--------------|---------------|--------------|
| <u>OSWELLSBM1</u> | | | | <u>68.470</u> | |
| | <u>4.793</u> | <u>73.263</u> | | | <u>15.57</u> |
| <u>GW6</u> | | | <u>2.037</u> | <u>71.226</u> | <u>21.95</u> |
| | <u>2.088</u> | <u>73.314</u> | | | <u>22.31</u> |
| <u>OSWELLSBM1</u> | | | <u>4.840</u> | <u>68.474</u> | <u>16.10</u> |

Tag Check List:

Photo Check List:

- Stamp Site/Station Designation INRCITY GW6 Bench Mark close
- Stamp Elevation in NGVD 29 71.23 Bench Mark standing
- Stamp Date 9-20-07 M. Well tag close
- Stamp By Woolpert / M. Well standing
- Stamp Datum (NGVD 29) / M. Well Area
- Scratch Old Tag /

| | |
|--------|-------------|
| Photo# | <u>1480</u> |
| Photo# | <u>1481</u> |
| Photo# | <u>1492</u> |
| Photo# | <u>1493</u> |
| Photo# | <u>1494</u> |

Staff Gauge:

| Site Name | Water Elev. | Gauge Reading | Time Meas. | Date Meas. |
|--------------|--------------|---------------|--------------|--------------|
| <u>_____</u> | <u>_____</u> | <u>_____</u> | <u>_____</u> | <u>_____</u> |

Latitude and Longitude:

| | |
|------------------------|------------------------|
| <u>28° 15' 21.3382</u> | <u>81° 30' 13.7048</u> |
| <u>1426087.91</u> | <u>493977.82</u> |

Site Description, Comments, or Remarks:

DOES NOT MATCH OLD ELEV FOR WELL REFERENCE



South Florida Water Management District Benchmark Database

Report run on: December 5, 2007 9:06 AM

| | | |
|----------------------------------|-------------------------------|--------------------|
| Designation: OSFWELLSBM1 | Latitude: 281521.300 | Scaled values only |
| County: OSCEOLA | Longitude: 813013.600 | |
| USGS Quad: INTERCESSION CITY | Monument By: SFWMD | |
| Project: INRCTY WELL SITE | Year: 2003 | |
| Sec: 3 Twp: 26 Rge: 28 | Type: V | |
| Status: | Stamping: OSF WELLS BM 1 2003 | |
| NAD 1927 Coordinates: | Party Chief: ART HOLLIN | |
| N = | Field Book OSCWELLS 17 | |
| E = | Page: 34 | |
| Adjustment: | NGVD 1929 | |
| NAD 1983 Coordinates: | Elevation: 68.470 | |
| X = 493984.844 | Order: 3 | |
| Y = 1426091.818 | Class: | |
| Adjustment: | NAVD 1988 | |
| Order: | Elevation: 67.514 | |
| Class: | Order: 3 | |
| | Class: | |

Description:

FROM THE INTERSECTION OF UNITED STATES HIGHWAY 17/92 (US 17/92) AND TALLAHASSEE BOULEVARD IN INTERCESSION CITY, GO EAST ON US 17/92 A DISTANCE OF 0.25 OF A MILE TO A ROAD INTERSECTION SHEPHERD LANE TO THE SOUTH AND NOCATEE STREET TO THE NORTH. THEN GO SOUTH ON SHEPHERD LANE 0.25 OF A MILE TO WILE ROAD. THEN GO EAST ON WILE ROAD 0.125 OF A MILE TO A FENCE WITH A GATE. GO THROUGH THE GATE AND GO SOUTH ALONG THE FENCE, 250 FEET MORE OR LESS TO THE STATIONS LOCATION.

THE STATION IS SET ON THE NORTH END OF A CONCRETE SLAB. THE STATION IS 93.6 FEET SOUTH OF THE FENCE CORNER.

THE STATION IS A BRASS DISK STAMPED " OSF WELLS BM 1 2003".

NGS SOURCE MONUMENTS: G354 AND H354

Section 3: Monitoring Well Site Information in Table Format

Monitoring Well Site Information in Table Format

| Well Designation | Well Type | County | Quadrangle | Section | Township | Range | Northing | Easting | Latitude of BM | Longitude of BM | Ref. Point Elev. (NGVD29) | Ref. Point Elev. (NAVD88) | Benchmark Name Used to Set Ref. Elev. | Benchmark Elev. (NGVD29) | Benchmark Elev. (NAVD88) |
|------------------|-----------|---------|-------------------|---------|----------|-------|----------|---------|----------------|-----------------|---------------------------|---------------------------|---------------------------------------|--------------------------|--------------------------|
| AIR19 | GW1 | Orange | Pine Castle | 18 | 24 | 30 | 1479505 | 542444 | 28 24 11.94 | 81 21 13.49 | 89.41 | 88.48 | AIR19 | 84.80 | 83.87 |
| AIR19 | GW2 | Orange | Pine Castle | 18 | 24 | 30 | 1479505 | 542444 | 28 24 11.94 | 81 21 13.49 | 90.05 | 89.12 | AIR19 | 84.80 | 83.87 |
| ALL1 | GW1 | Osceola | Ashton | 29 | 26 | 31 | 1404991 | 577718 | 28 11 55 | 81 14 36.8 | 76.52 | 75.59 | ALLIGATOR WELL #2 | 71.77 | 70.85 |
| ALL1 | GW2 | Osceola | Ashton | 29 | 26 | 31 | 1404991 | 577718 | 28 11 55 | 81 14 36.8 | 76.27 | 75.35 | ALLIGATOR WELL #2 | 71.77 | 70.85 |
| ALL2 | GW1 | Osceola | Ashton | 29 | 26 | 31 | 1404988 | 578899 | 28 11 55 | 81 14 23.6 | 74.16 | 73.24 | ALLIGATOR WELL #2 | 71.77 | 70.85 |
| ALL2 | GW2 | Osceola | Ashton | 29 | 26 | 31 | 1404988 | 578899 | 28 11 55 | 81 14 23.6 | 73.80 | 72.88 | ALLIGATOR WELL #2 | 71.77 | 70.85 |
| BOG527 | STG1 | Orange | Lake Jessamine | 13 | 24 | 29 | 1475481 | 535428 | 28 23 31.94 | 81 22 31.9 | 87.50 | 86.58 | BOG 527 | 81.88 | 80.95 |
| C31SW | STG1 | Osceola | St Cloud South | 8 | 26 | 30 | 1418598 | 547434 | 28 14 09.02 | 81 20 15.7 | 62.77 | 61.83 | C31 GFS | 57.70 | 56.76 |
| CAST | GW1 | Osceola | Ashton | 5 | 27 | 32 | 1395463 | 612548 | 28 10 21.4 | 81 08 07.4 | 74.54 | 73.34 | CAST | 71.85 | 70.65 |
| CAST | GW2 | Osceola | Ashton | 5 | 27 | 32 | 1395463 | 612548 | 28 10 21.4 | 81 08 07.4 | 74.07 | 72.87 | CAST | 71.85 | 70.65 |
| EXOTFI | GW1 | Osceola | Holopaw | 9 | 27 | 32 | 1389346 | 619075 | 28 09 20.7 | 81 06 54.4 | 75.39 | 74.17 | EXOTFI | 72.14 | 70.92 |
| INRCTY | GW1 | Osceola | Intercession City | 3 | 26 | 28 | 1426088 | 493978 | 28 15 21.34 | 81 30 13.70 | 71.17 | 70.21 | OSFWELLS BM1 | 68.47 | 67.51 |
| INRCTY | GW2 | Osceola | Intercession City | 3 | 26 | 28 | 1426088 | 493978 | 28 15 21.34 | 81 30 13.70 | 71.14 | 70.18 | OSFWELLS BM1 | 68.47 | 67.51 |
| INRCTY | GW3 | Osceola | Intercession City | 3 | 26 | 28 | 1426088 | 493978 | 28 15 21.34 | 81 30 13.70 | 71.98 | 71.02 | OSFWELLS BM1 | 68.47 | 67.51 |
| INRCTY | GW4 | Osceola | Intercession City | 3 | 26 | 28 | 1426088 | 493978 | 28 15 21.34 | 81 30 13.70 | 72.53 | 71.57 | OSFWELLS BM1 | 68.47 | 67.51 |
| INRCTY | GW5 | Osceola | Intercession City | 3 | 26 | 28 | 1426088 | 493978 | 28 15 21.34 | 81 30 13.70 | 72.10 | 71.14 | OSFWELLS BM1 | 68.47 | 67.51 |
| INRCTY | GW6 | Osceola | Intercession City | 3 | 26 | 28 | 1426088 | 493978 | 28 15 21.34 | 81 30 13.70 | 71.23 | 70.27 | OSFWELLS BM1 | 68.47 | 67.51 |
| KIRCOF | GW1 | Osceola | Lake Tohopekaliga | 9 | 27 | 29 | 1389279 | 519428 | 28 09 17.84 | 81 25 27.67 | 74.83 | 73.82 | OS 134 | 71.66 | 70.65 |
| KIRCOF | GW2 | Osceola | Lake Tohopekaliga | 9 | 27 | 29 | 1389279 | 519428 | 28 09 17.84 | 81 25 27.67 | 73.93 | 72.92 | OS 134 | 71.66 | 70.65 |
| KISSD | STG1 | Osceola | Kissimmee | 28 | 25 | 29 | 1436371 | 521494 | 28 17 04.2 | 81 25 06.4 | 65.19 | 64.25 | KISSD | 61.42 | 60.48 |
| MAKO | GW1 | Osceola | Narcoossee | 32 | 25 | 31 | 1432570 | 582808 | 28 16 28.18 | 81 13 40.49 | 80.19 | | MAKO 3 | 76.39 | |
| MOSSPK | GW1 | Orange | Narcoossee NW | 23 | 24 | 31 | 1470369 | 594673 | 28 22 42.65 | 81 11 28.46 | 72.64 | 71.60 | MOSSPK | 68.53 | 67.49 |
| MOSSPK | GW2 | Orange | Narcoossee NW | 23 | 24 | 31 | 1470369 | 594673 | 28 22 42.65 | 81 11 28.46 | 72.30 | 71.26 | MOSSPK | 68.53 | 67.49 |
| OAKISL | GW1 | Osceola | Lake Louisa SW | 5 | 25 | 27 | 1454680 | 452311 | 28 20 02.49 | 81 38 01.31 | 111.46 | 110.60 | OAKISL | 109.10 | 108.24 |
| OAKISL | GW2 | Osceola | Lake Louisa SW | 5 | 25 | 27 | 1454680 | 452311 | 28 20 02.49 | 81 38 01.31 | 111.60 | 110.74 | OAKISL | 109.10 | 108.24 |
| OAKISL | GW3 | Osceola | Lake Louisa SW | 5 | 25 | 27 | 1454680 | 452311 | 28 20 02.49 | 81 38 01.31 | 111.55 | 110.69 | OAKISL | 109.10 | 108.24 |
| OAKISL | GW4 | Osceola | Lake Louisa SW | 5 | 25 | 27 | 1454680 | 452311 | 28 20 02.49 | 81 38 01.31 | 110.01 | 109.15 | OAKISL | 109.10 | 108.24 |
| OSF53 | GW1 | Osceola | St Cloud South | 18 | 27 | 30 | 1383756 | 542986 | 28 08 23.9 | 81 21 04.3 | 62.77 | 61.73 | OSF 53 | 61.41 | 60.37 |
| OSF53 | GW2 | Osceola | St Cloud South | 18 | 27 | 30 | 1383756 | 542986 | 28 08 23.9 | 81 21 04.3 | 63.68 | 62.63 | OSF 53 | 61.41 | 60.37 |
| OSF53 | GW3 | Osceola | St Cloud South | 18 | 27 | 30 | 1383756 | 542986 | 28 08 23.9 | 81 21 04.3 | 63.69 | 62.65 | OSF 53 | 61.41 | 60.37 |
| REDYCK | GW1 | Orange | Intercession City | 23 | 24 | 27 | 1470874 | 467168 | 28 22 43.57 | 81 35 15.94 | 101.54 | 100.60 | REDYCK | 99.09 | 98.15 |
| REDYCK | GW2 | Orange | Intercession City | 23 | 24 | 27 | 1470874 | 467168 | 28 22 43.57 | 81 35 15.94 | 103.64 | 102.70 | REDYCK | 99.09 | 98.15 |
| S57-SCA | STG1 | Osceola | Narcoossee | 1 | 25 | 31 | 1455933 | 600071 | 28 20 19.8 | 81 10 27.79 | 71.38 | 70.33 | Y 577 | 68.78 | 67.73 |
| S57-SCA | STG2 | Osceola | Narcoossee | 1 | 25 | 31 | 1455933 | 600071 | 28 20 19.8 | 81 10 27.79 | 71.37 | 70.32 | Y 577 | 68.78 | 67.73 |
| S58-SCA | STG1 | Osceola | Narcoossee | 36 | 25 | 31 | 1431567 | 604364 | 28 16 18.59 | 81 09 39.38 | 72.40 | 71.35 | OS 100 | 70.17 | 69.12 |
| S58-SCA | STG2 | Osceola | Narcoossee | 36 | 25 | 31 | 1431567 | 604364 | 28 16 18.59 | 81 09 39.38 | 72.41 | 71.36 | OS 100 | 70.17 | 69.12 |
| S59-SCA | HW | Osceola | St Cloud North | 33 | 25 | 30 | 1429037 | 555707 | 28 15 52.6 | 81 18 43.5 | 66.83 | 65.83 | KR 908 | 61.69 | 60.69 |
| S59-SCA | TW | Osceola | St Cloud North | 33 | 25 | 30 | 1429037 | 555707 | 28 15 52.6 | 81 18 43.5 | 66.80 | 65.81 | KR 908 | 61.69 | 60.69 |
| S59W | GW1 | Osceola | St Cloud North | 33 | 25 | 30 | 1429076 | 555692 | 28 15 52.99 | 81 18 43.67 | 62.52 | 61.63 | OS 81 1980 | 65.02 | 64.13 |
| S60-SCA | HW | Osceola | Ashton | 32 | 26 | 31 | 1397057 | 580727 | 28 10 36.5 | 81 14 03 | 75.57 | 74.48 | KR 1066 | 71.01 | 70.14 |
| S60-SCA | TW | Osceola | Ashton | 32 | 26 | 31 | 1397057 | 580727 | 28 10 36.5 | 81 14 03 | 74.58 | 73.49 | KR 1066 | 71.01 | 70.14 |
| S61-SCA | HW | Osceola | St Cloud South | 18 | 27 | 30 | 1383797 | 542852 | 28 08 24.3 | 81 21 05.8 | 65.58 | 64.54 | OSF 53 | 61.40 | 60.37 |
| S61-SCA | TW | Osceola | St Cloud South | 18 | 27 | 30 | 1382797 | 542852 | 28 08 24.3 | 81 21 05.8 | 65.56 | 64.53 | OSF 53 | 61.40 | 60.37 |
| S62-SCA | HW | Orange | Narcoossee | 33 | 24 | 31 | 1464776 | 586085 | 28 21 47.13 | 81 13 04.49 | 72.51 | 71.48 | OR 91 | 68.60 | 67.57 |
| S62-SCA | TW | Orange | Narcoossee | 33 | 24 | 31 | 1464776 | 586085 | 28 21 47.13 | 81 13 04.49 | 72.53 | 71.50 | OR 91 | 68.60 | 67.57 |
| S63-SCA | HW | Osceola | Cypress Lake | 19 | 27 | 31 | 1376003 | 574258 | 28 07 07.9 | 81 15 14.8 | 71.75 | 70.85 | KR 1067 | 68.33 | 67.43 |
| S63-SCA | TW | Osceola | Cypress Lake | 19 | 27 | 31 | 1376003 | 574258 | 28 07 07.9 | 81 15 14.8 | 71.78 | 70.88 | KR 1067 | 68.33 | 67.43 |
| SCBR | GW1 | Orange | Lake Jessamine | 8 | 24 | 29 | 1478382 | 516853 | 28 24 36.17 | 81 26 01.71 | 86.28 | 85.37 | C 1286 036 | 87.57 | 86.66 |
| SCPE | GW1 | Orange | Kissimmee | 29 | 24 | 29 | 1468791 | 514892 | 28 22 24.96 | 81 26 21.57 | 81.44 | 80.53 | SCPE | 78.19 | 77.28 |
| SCPN | HW | Orange | Lake Jessamine | 19 | 24 | 29 | 1474814 | 510500 | 28 23 24.27 | 81 27 11.51 | 83.15 | 82.24 | SCPN | 78.53 | 77.62 |
| SCPN | TW | Orange | Lake Jessamine | 19 | 24 | 29 | 1474814 | 510500 | 28 23 24.27 | 81 27 11.51 | 83.04 | 82.13 | SCPN | 78.53 | 77.62 |
| SCPS | HW | Orange | Kissimmee | 30 | 24 | 29 | 1468563 | 510520 | 28 22 22.55 | 81 27 10.50 | 82.64 | 81.73 | L 715 008 | 79.23 | 78.32 |
| SCPS | TW | Orange | Kissimmee | 30 | 24 | 29 | 1468563 | 510520 | 28 22 22.55 | 81 27 10.50 | 82.47 | 81.56 | L 715 008 | 79.23 | 78.32 |
| SCSS | STG1 | Orange | Lake Jessamine | 13 | 24 | 28 | 1477281 | 508089 | 28 23 48.78 | 81 27 38.09 | 85.09 | 84.20 | SCSS | 80.72 | 79.83 |
| SW15 | GW1 | Orange | Lake Louisa SW | 16 | 24 | 27 | 1475682 | 456994 | 28 23 30.67 | 81 37 10.11 | 111.05 | 110.11 | SW15-9 | 108.93 | 107.99 |
| SW15 | GW2 | Orange | Lake Louisa SW | 16 | 24 | 27 | 1475682 | 456994 | 28 23 30.67 | 81 37 10.11 | 112.34 | 111.40 | SW15-9 | 108.93 | 107.99 |
| TOHO 1 | GW1 | Osceola | St Cloud South | 33 | 26 | 30 | 1396053 | 555533 | 28 10 26 | 81 18 44.5 | 68.01 | | TOHO 1 | 64.46 | |
| TOHO 1 | GW2 | Osceola | St Cloud South | 33 | 26 | 30 | 1396053 | 555533 | 28 10 26 | 81 18 44.5 | 67.81 | | TOHO 1 | 64.46 | |
| TOHO 2 | GW1 | Osceola | St Cloud South | 3 | 27 | 30 | 1395292 | 557196 | 28 10 18.5 | 81 18 25.9 | 69.40 | 68.37 | TOHO 2 | 65.66 | 64.63 |

Monitoring Well Site Information in Table Format

| Well Designation | Well Type | County | Quadrangle | Section | Township | Range | Northing | Easting | Latitude of BM | Longitude of BM | Ref. Point Elev. (NGVD29) | Ref. Point Elev. (NAVD88) | Benchmark Name Used to Set Ref. Elev. | Benchmark Elev. (NGVD29) | Benchmark Elev. (NAVD88) |
|------------------|-----------|---------|-------------------|---------|----------|-------|----------|---------|----------------|-----------------|---------------------------|---------------------------|---------------------------------------|--------------------------|--------------------------|
| TOHO 4 | GW1 | Osceola | Lake Tohopekaliga | 10 | 27 | 29 | 1386180 | 530170 | 28 08 47.51 | 81 23 27.55 | 63.71 | 62.68 | TOHO 4 | 59.62 | 58.59 |
| TOHO 5 | GW1 | Osceola | Lake Tohopekaliga | 29 | 26 | 29 | 1405464 | 514584 | 28 11 57.92 | 81 26 22.44 | 74.36 | 73.38 | TOHO 5 | 70.33 | 69.35 |
| TOHO 5 | GW2 | Osceola | Lake Tohopekaliga | 29 | 26 | 29 | 1405464 | 514584 | 28 11 57.92 | 81 26 22.44 | 74.10 | 73.12 | TOHO 5 | 70.33 | 69.35 |
| TOHO 6 | GW1 | Osceola | St Cloud South | 29 | 26 | 29 | 1403532 | 540917 | 28 11 39.66 | 81 21 28.06 | 70.44 | 69.45 | TOHO 6 | 67.01 | 66.02 |
| TOHO 7 | GW1 | Osceola | Kissimmee | 21 | 25 | 29 | 1440606 | 519669 | 28 17 46.06 | 81 25 26.98 | 74.21 | 73.25 | BMWELL 7 | 70.84 | 69.88 |
| TOHO 8 | GW1 | Osceola | Kissimmee | 21 | 25 | 29 | 1440342 | 523931 | 28 17 43.6 | 81 24 39.3 | 68.95 | 67.99 | BMWELL 8 | 65.40 | 64.44 |
| TOHO 10 | GW1 | Osceola | St Cloud South | 19 | 26 | 30 | 1406499 | 543294 | 28 12 09.1 | 81 21 01.6 | 74.67 | 73.67 | TOHO 10 | 70.58 | 69.58 |
| TOHO 12 | GW1 | Osceola | St Cloud North | 10 | 25 | 30 | 1453807 | 561663 | 28 19 58.01 | 81 17 37.57 | 77.82 | 76.62 | BMWELL12 | 73.92 | 72.72 |
| TOHO 14 | GW1 | Osceola | St Cloud South | 13 | 27 | 30 | 1385263 | 569855 | 28 08 39.5 | 81 16 04.2 | 72.84 | | WELL 14 | 69.09 | |
| TOHO 15 | GW1 | Osceola | St Cloud South | 30 | 26 | 31 | 1401062 | 572717 | 28 11 16 | 81 15 32.6 | 78.40 | 77.38 | TOHO 15 | 75.05 | 74.02 |
| TOHO 16 | GW1 | Osceola | St Cloud South | 1 | 27 | 30 | 1393537 | 568710 | 28 10 01.4 | 81 16 17.2 | 72.77 | 71.73 | TOHO 16A | 69.12 | 68.08 |
| TOHO 16 | GW2 | Osceola | St Cloud South | 1 | 27 | 30 | 1393537 | 568710 | 28 10 01.4 | 81 16 17.2 | 72.60 | 71.56 | TOHO 16A | 69.12 | 68.08 |
| TOHO E | STG1 | Osceola | St Cloud North | 2 | 26 | 30 | 1427170 | 565475 | 28 15 34.35 | 81 16 54.22 | 61.93 | 60.94 | TOHOE | 61.63 | 60.64 |
| TOHO W | STG1 | Osceola | Kissimmee | 32 | 25 | 29 | 1438045 | 525426 | 28 17 20.9 | 81 24 22.49 | 62.07 | 61.13 | TOHOW | 57.93 | 56.98 |
| WR6 | GW1 | Osceola | Lake Hatchineha | 28 | 27 | 29 | 1374487 | 523000 | 28 06 51.5 | 81 24 47.2 | 69.05 | 68.01 | WR 6 | 64.82 | 63.78 |
| WR8 | GW1 | Osceola | Lake Hatchineha | 28 | 27 | 29 | 13711644 | 521486 | 28 06 23.3 | 81 25 04.0 | 72.89 | 71.85 | WR 8 | 70.83 | 69.79 |
| WR9 | GW1 | Osceola | Lake Hatchineha | 28 | 27 | 29 | 1372605 | 520934 | 28 06 32.8 | 81 25 10.2 | 70.65 | 69.61 | WR 9 | 70.36 | 69.32 |

NOTES:

1. Latitude and longitude were derived at the benchmark location, and is given to assist in locating the site. It is not meant to accurately locate each well.
2. Northing and Eastings were obtained by using CORPSCON to convert the latitude and longitude to Florida State Plane Coordinates, East Zone, Adjustment of 1990 (NAD83/90) HARN.
3. All measurements and elevations are in feet unless otherwise noted.
4. Some Benchmarks used did not have a published NAVD88 elevation, and therefore have been left blank.
5. In a few cases a Benchmark did not have superseded NGVD29 values so CORPSCON was used to derive a NGVD29 elevation.

Section 4: Benchmark Data Sheets