



SOUTH FLORIDA WATER MANAGEMENT DISTRICT

Rev. 1/16

DB Hydro Station Name:	DB Hydro Site Name:	Date of Field Work: 07-aug-17
Party Chief: Strickland	Field Book: Misc 7E	Pages 1 thru 3
		Prepared by: H. Ehmke

SITE SPECIFIC DATA

Site Benchmark: OSF111	Benchmark Elevation (NAVD88) 62.593	Corpscon 6.0.1 Conversion Factor (NAVD88 to NGVD29) +1.073
Reference Elevation(s) (NAVD88): 65.262	Existing Brass Tag Elevation (Datum): Not applicable	Calibration Port Elevation(s) (NAVD88): Not applicable
Ground Elevation (NAVD88): N corner El. 62.2 S corner El. 62.0 E corner El. 62.1 W corner EL. 62.1	Pad Elevation (NAVD88): N corner El. 62.61 S corner El. 62.55 E corner El. 62.56 W corner EL. 62.55	

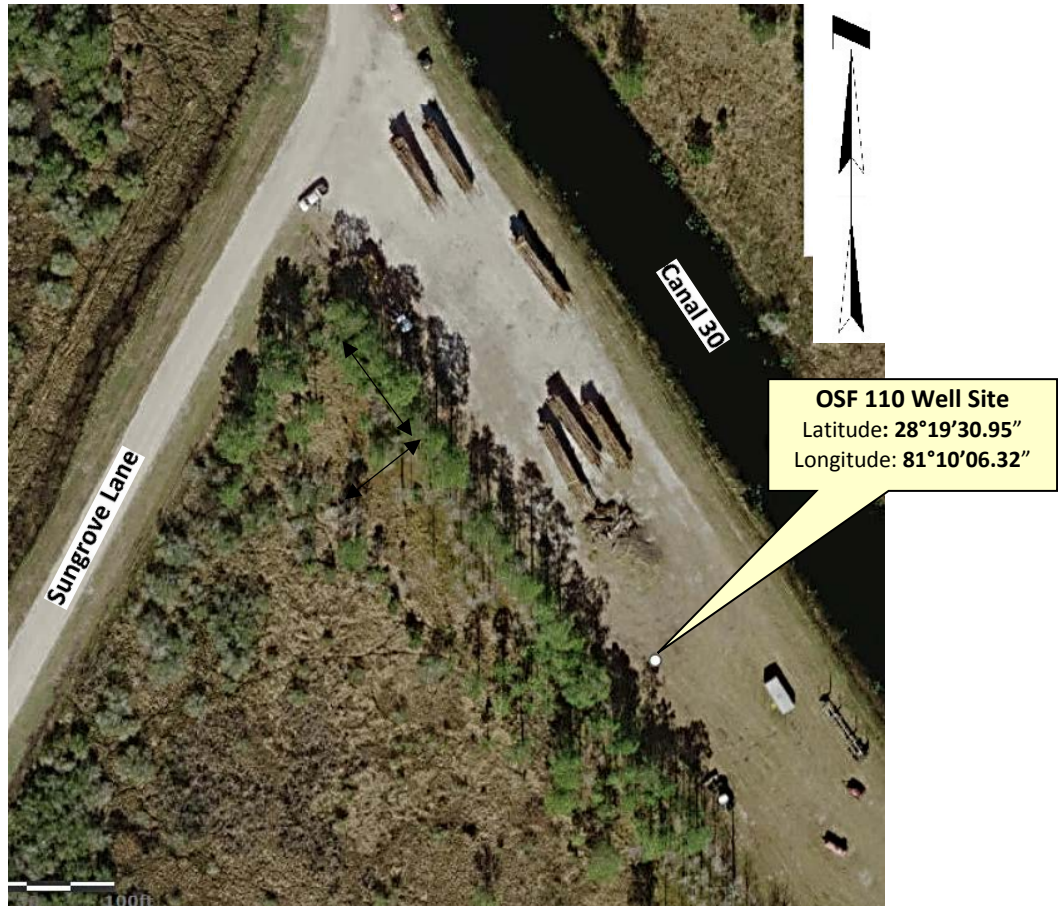
GEOGRAPHIC DATA

Section 12	Township 25 South	Range 31 East	
Benchmark	Latitude: 28°19'30.95"	Longitude: 81°10'06.32"	Source: Field Book Misc 7E page 3
	State Plane Coordinates	Northing (Y) = 1450997	Easting (X) = 601982

Notes:
NAVD88 – North American Vertical Datum of 1988
NGVD29- National Geodetic Vertical Datum of 1929
Corpscon 6.0.1 - A U.S. Army Corps of Engineers Engineering Research and Development Center Topographic Engineering Center Alexandria, Virginia Windows-based program to convert coordinates and elevations between datum's using vertcon05.txt and vertcon05.05 files supplied by the U.S. Army Corps of Engineers South Atlantic Division, Jacksonville Fl.

PICTURES

Aerial Overall Site



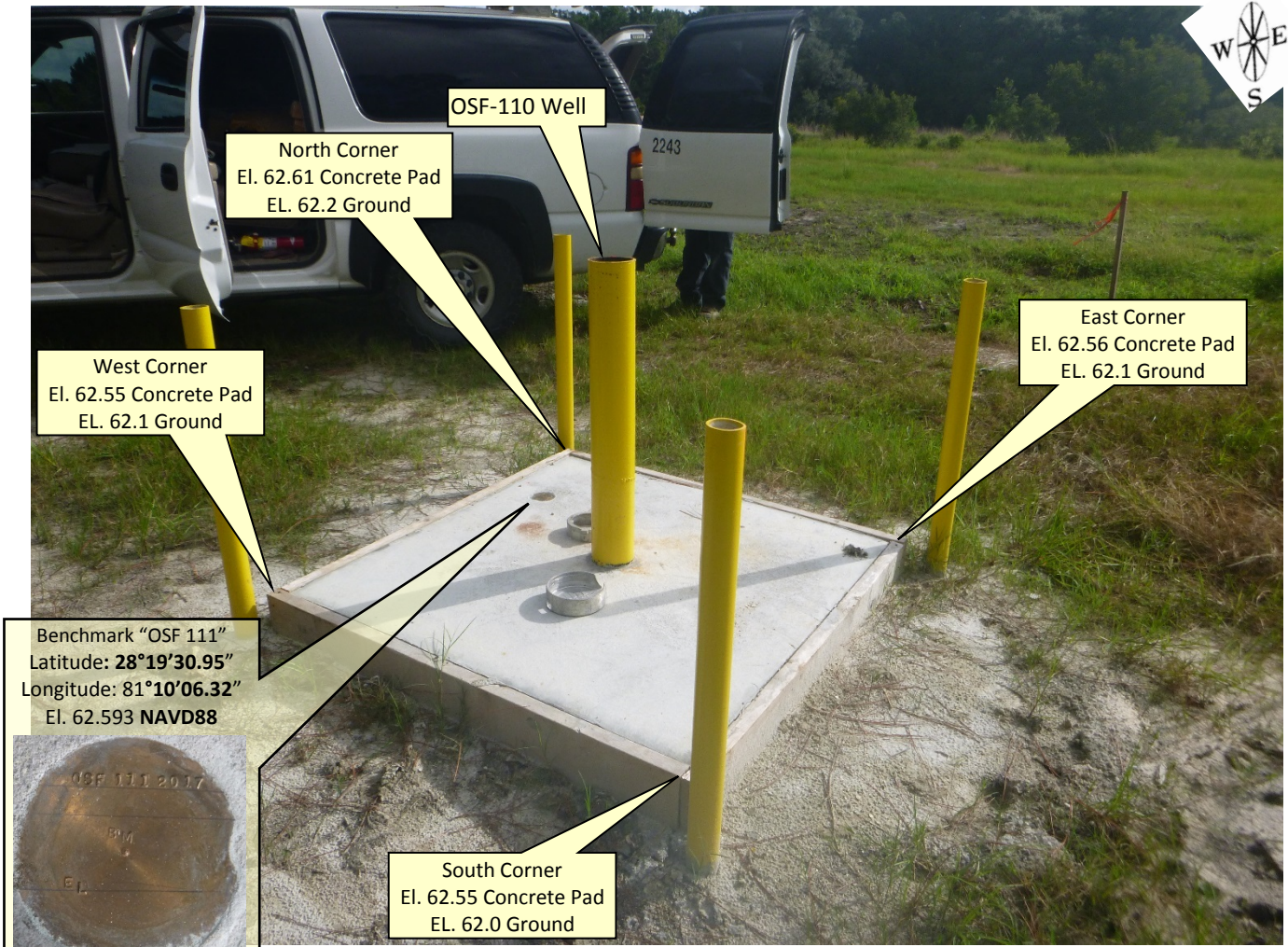
Not to scale (esri product)



SOUTH FLORIDA WATER MANAGEMENT DISTRICT

Rev. 1/16

Overall



OSF-110 Well

North Corner
El. 62.61 Concrete Pad
EL. 62.2 Ground

West Corner
El. 62.55 Concrete Pad
EL. 62.1 Ground

East Corner
El. 62.56 Concrete Pad
EL. 62.1 Ground

Benchmark "OSF 111"
Latitude: 28°19'30.95"
Longitude: 81°10'06.32"
El. 62.593 NAVD88



South Corner
El. 62.55 Concrete Pad
EL. 62.0 Ground

Looking Northerly (oblique not to scale) (07-aug-17)

Well Head



Reference Point
"X" cut top of pipe
El. 65.262 NAVD88

Looking Northerly (oblique not to scale) (07-aug-17)

SEC 12 TWP 25 RGE 31

ESTABLISH NAVD 88 @ WELL SITE
OSF III NEWLY DRILLED

FILE NAME = OSF III

STA	PT #	EL	BM EL
W 577 2003	1		62.99 NAVD 88
OS96 1980	5	61.507	61.55 PUBLISHED
		{ 61.503 } ADJ	
X 577	15	63.33	63.32
		ERROR = -0.01	
OS96	20	61.507	* 61.503 * ADJ
OSF III	17	62.597	62.593 ADJ
OS96	19	61.51	

EQUIP USED DINI LEVEL
SERIAL # 771295
& BAR CODE ROD

STRICKLAND
WISE

COMMENTS

BM W 577 2003 FL DEP BRASS DISK FD GOOD COND

BM OS96 1980 SFINN'S ALUM CAP FD GOOD COND

BM X 577 2003 FL DEP BRASS DISK FD GOOD COND

BM OS96 1980 SFINN'S ALUM CAP

BM OSF III FD 3 1/4" DIA. BRASS DISK (NO STAMPING)
IN 4' X 4' CONC WELL PAD LOCATED 0.6' EAST of
WEST EDGE of CONC PAD & 1.1' SOUTH of NORTH EDGE of
CONC PAD. SFINN'S STAMPED BRASS DISK
" OSF III 2017 BM EL "

BM OS96 1980 AS ABOVE

SEC 12 TWP 25 RGE 31

CONT'D FROM PAGE - 1

STA	PT#	EL	BM EL
OSF III	50	62.597	62.593 ADJ
REF PT	51	65.267	65.262 ADJ
Wl CONTAD	52	62.554	
N CONTAD	53	62.606	
E CONTAD	54	62.559	
S CONTAD	55	62.548	
Wl GRND	56	62.097	
N "	57	62.156	
E "	58	62.056	
S "	59	61.967	
OSF III	60	62.598	62.593 ADJ

~~STRIKLAND~~
WISC

COMMENTS

BM OSF III 2017 SEE PAGE - 1 & 3 SKETCH PG - 3

REF PT "X" AT TOP of 4" IRON WELL CASING N. SIDE
CONC PAD W CORNER
" " N "
" " E "
" " S "
GROUNDS @ W "
" " N "
" " E "
" " S "

BM OSF III 2017 AS ABOVE

SEC 12 TWP 25 RGE 31

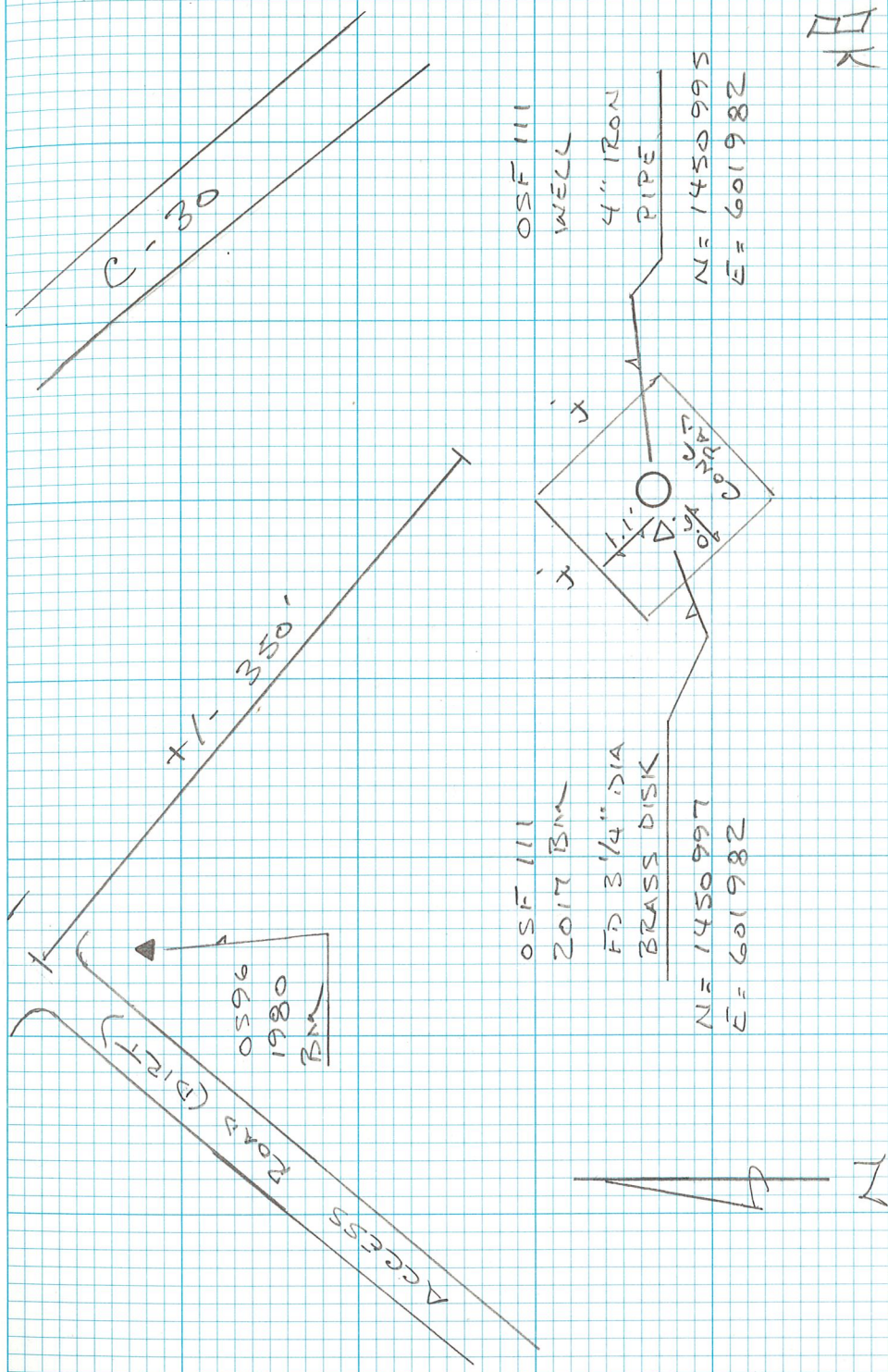
LOCATE WELL & BM OSF III

FILE NAME = DESERET RANCH WELL

REF : MISC FB# 7B PAGE - 63

BASE @ PT 1131 FD 5/8 IRC SSMC
TRAV PT

CONTROL POINT	N	E
1132/5011 5/8" IRC "SSMC TRAV PT"	-0.022	0.028
5012 BM OSF III 2017		
5013 OSF III WELL		



STRICKLANDS
K WISE





SOUTH FLORIDA WATER MANAGEMENT DISTRICT

Rev. 1/16

DESIGNATION: OSF111	PROJECT: OSF-111 Well Site
ESTABLISHED BY: SOUTH FLORIDA WATER MANAGEMENT DISTRICT	SURVEYOR: Strickland
RECOVERED BY:	DATE: 07-aug-17

GEOGRAPHIC POSITION

SECTION 12	TOWNSHIP 25 SOUTH	RANGE 31 EAST
COUNTY: Osceola	NAME OF QUADRANGLE: Narcoossee	GEOGRAPHIC INDEX OF QUAD: 3510
HORIZONTAL DATUM: 1927 (1983) Other _____ ZONE E or W		
VERTICAL DATUM: MSL 1929 (1988) Other _____		
VERTICAL ACCURACY: 1 2 (3)		
STATE PLANE COORDINATE	(N) Y= 1450997	(E) X= 601982
		NAVD 88 EL. 62.593 NGVD 29 EL. 63.666 (Corpscon)
CORPSCON 6.0.1 CONVERSION FACTOR (NAVD88 TO NGVD29): +1.073		
LATITUDE: 28°19'30.95"		LONGITUDE: 81°10'06.32"

RECOVERY DATA

Stamping: OSF 111 2017 BM EL

To Reach: From the junction of U.S. Highway 192, 441 (13th Street) and County Road 523 (Vermont Avenue, Canoe Creek Road) in St. Cloud, go east on U.S. Highway 192, 441 (13th Street, East Bronson Highway) for 3.0 miles to the intersection of State Road 15; continue east on U.S. Highway 192, 441 (Bronson Highway) for 1.25 miles to the junction of Nova Road (County Road 532) on the left; turn left on Nova Road (County Road 532) and go northeast for 3.65 miles to the west end of South Florida Water Management District's Canal 32C and the junction of Sungrove Lane; turn left onto Sungrove Lane and go north for approximately 100.0 feet to a locked gated; continue north on Sungrove Lane for 4.2 miles to South Florida Water Management District Canal 30; turn right, southeast and go 300 feet to the OSF111 well site and station location.

The station is a 3¼-inch brass disk stamped "OSF 111 2017 BM EL" set on the northerly side of the well in the concrete base. The station is located 1.1 foot from the northerly side of the 4 foot by 4-foot base and 0.6 of a foot from the westerly side of the concrete base.

NGS SOURCE BENCHMARK: **W577 (DB6218) El. 62.985 NAVD88 and X577 (D6219) El. 62.317 NAVD88.** Note: NGS OS96 (DB6224) published elevation 61.55 NAVD88 not used. A closed level line between W577 and X 577 established a new elevation of 61.503 NAVD88.

FIELD BOOK: **MISC 7E PAGES 1 thru 3**

PICTURES

Overall Site



3¼" Brass disk stamped
"OSF 111 2017 EL"
El.62.594 NAVD88



Looking Northerly (Not to scale)



SOUTH FLORIDA WATER MANAGEMENT DISTRICT

Rev. 1/16

SKETCH (Field Book Misc 7E page 3)

3 MISC FB#7E 8-7-17

SEC 12 TWP 25 RBE 31

LOCATE WELL & BM OSF III

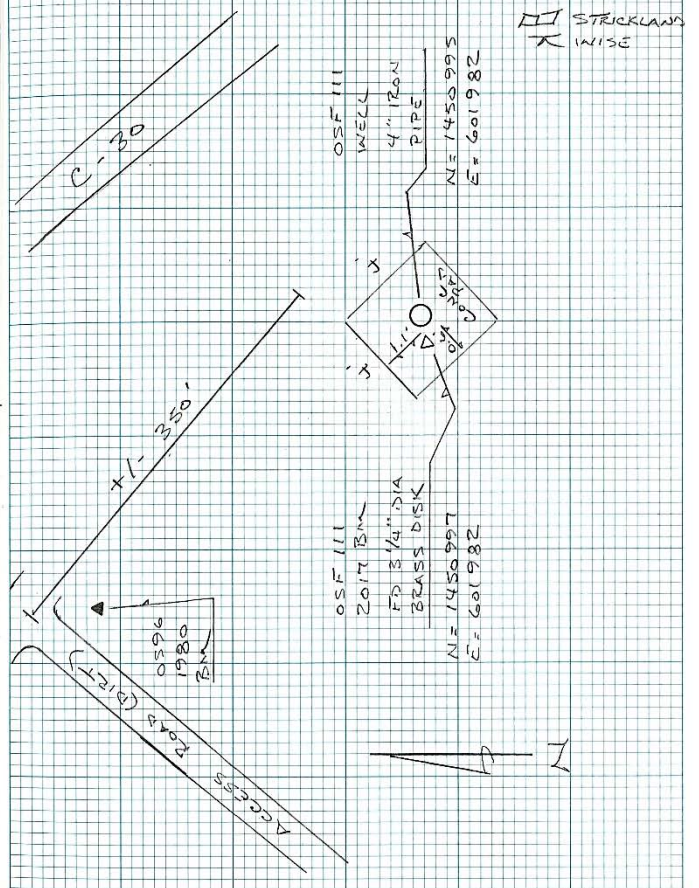
FILE NAME = DESERT RANCH WELL

REF: MISC FB# 7B PAGE- 6B

BASE @ PT 1131 FD 5/8 IRC SSMC
TRAV PT

CONTROL POINT	N	E
1132/Soil 5/8" IRC SSMC TRAV PT	-0.022	0.028
5012 BM OSF III 2017		
5013 OSF III WELL		

MISC FB#7E 8-7-17 3



The NGS Data Sheet

See file [dsdata.pdf](#) for more information about the datasheet.

```

PROGRAM = datasheet95, VERSION = 8.12.2
1      National Geodetic Survey,  Retrieval Date = AUGUST  8, 2017
DG6218 *****
DG6218 DESIGNATION -  W 577
DG6218 PID          -  DG6218
DG6218 STATE/COUNTY-  FL/OSCEOLA
DG6218 COUNTRY      -  US
DG6218 USGS QUAD    -  NARCOOSSEE (1970)
DG6218
DG6218                      *CURRENT SURVEY CONTROL
DG6218
DG6218* NAD 83(1986) POSITION- 28 19 17.      (N) 081 10 18.      (W)  SCALED
DG6218* NAVD 88 ORTHO HEIGHT -  19.198 (meters)      62.99  (feet) ADJUSTED
DG6218
DG6218 GEOID HEIGHT   -          -28.090 (meters)                      GEOID12B
DG6218 DYNAMIC HEIGHT -           19.170 (meters)                      62.89  (feet) COMP
DG6218 MODELED GRAVITY -    979,170.7 (mgal)                          NAVD 88
DG6218
DG6218 VERT ORDER    -  SECOND      CLASS I
DG6218
DG6218.The horizontal coordinates were scaled from a topographic map and have
DG6218.an estimated accuracy of +/- 6 seconds.
DG6218.
DG6218.The orthometric height was determined by differential leveling and
DG6218.adjusted by the NATIONAL GEODETIC SURVEY
DG6218.in September 2004.
DG6218
DG6218.No vertical observational check was made to the station.
DG6218
DG6218.Significant digits in the geoid height do not necessarily reflect accuracy.
DG6218.GEOID12B height accuracy estimate available here.
DG6218
DG6218.The dynamic height is computed by dividing the NAVD 88
DG6218.geopotential number by the normal gravity value computed on the
DG6218.Geodetic Reference System of 1980 (GRS 80) ellipsoid at 45
DG6218.degrees latitude (g = 980.6199 gals.).
DG6218
DG6218.The modeled gravity was interpolated from observed gravity values.
DG6218
DG6218;              North          East      Units  Estimated Accuracy
DG6218;SPC FL E      -    441,840.      183,170.      MT    (+/- 180 meters Scaled)
DG6218
DG6218_U.S. NATIONAL GRID SPATIAL ADDRESS: 17RMM831328(NAD 83)
DG6218
DG6218                      SUPERSEDED SURVEY CONTROL
DG6218
DG6218.No superseded survey control is available for this station.
DG6218
DG6218_MARKER: DD = SURVEY DISK
DG6218_SETTING: 7 = SET IN TOP OF CONCRETE MONUMENT
DG6218_STAMPING: W 577 2003

```


DG6218_MARK LOGO: FLDEP
 DG6218_PROJECTION: FLUSH
 DG6218_MAGNETIC: M = MARKER EQUIPPED WITH BAR MAGNET
 DG6218_STABILITY: C = MAY HOLD, BUT OF TYPE COMMONLY SUBJECT TO
 DG6218+STABILITY: SURFACE MOTION
 DG6218_SATELLITE: THE SITE LOCATION WAS REPORTED AS NOT SUITABLE FOR
 DG6218+SATELLITE: SATELLITE OBSERVATIONS - October 06, 2010

DG6218
 DG6218 HISTORY - Date Condition Report By
 DG6218 HISTORY - 20030206 MONUMENTED FLDEP
 DG6218 HISTORY - 20101006 GOOD MOREKL

DG6218
 DG6218 STATION DESCRIPTION
 DG6218

DG6218'DESCRIBED BY FL DEPT OF ENV PRO 2003 (JLM)
 DG6218'THE MARK IS ABOUT 12.8 MI NORTHWEST OF HOLOPAW, 10.8 MI EAST-NORTHEAST
 DG6218'OF ST. CLOUD, 8.8 MI NORTHEAST OF ASHTON, IN SECTION 12, TOWNSHIP 25
 DG6218'SOUTH, RANGE 31 EAST.

DG6218'
 DG6218'TO REACH THE MARK FROM THE JUNCTION OF U.S. HIGHWAY 192, 441 (13TH
 DG6218'STREET) AND COUNTY ROAD 523 (VERMONT AVENUE, CANOE CREEK ROAD) IN ST.
 DG6218'CLOUD, GO EAST ON U.S. HIGHWAY 192, 441 (13TH STREET, EAST BRONSON
 DG6218'HIGHWAY) FOR 3.0 MI TO THE INTERSECTION OF STATE ROAD 15, CONTINUE
 DG6218'EAST ON U.S. HIGHWAY 192, 441 (BRONSON HIGHWAY) FOR 1.25 MI TO THE
 DG6218'JUNCTION OF NOVA ROAD (COUNTY ROAD 532) ON THE LEFT, TURN LEFT ON
 DG6218'NOVA ROAD (COUNTY ROAD 532) AND GO NORTHEAST FOR 3.65 MI TO THE WEST
 DG6218'END OF CANAL C-32C AND THE JUNCTION OF SUNGROVE LANE, TURN LEFT ON
 DG6218'SUNGROVE LANE AND GO NORTH FOR APPROXIMATELY 100.0 FT TO A LOCKED
 DG6218'GATED, CONTINUE NORTH ON SUNGROVE LANE FOR 3.9 MI TO THE MARK ON THE
 DG6218'RIGHT, SET IN THE TOP OF A ROUND CONCRETE MONUMENT FLUSH WITH THE
 DG6218'GROUND AND LEVEL WITH SUNGROVE LANE.

DG6218'
 DG6218'LOCATED 174.0 FT NORTHEAST OF A 5.0 FT DIAMETER OAK TREE, 25.5 FT
 DG6218'SOUTHEAST OF THE APPROXIMATE CENTERLINE AND 1.0 FT NORTHWEST OF A
 DG6218'BARBWIRE FENCE AND A CARSONITE WITNESS POST.
 DG6218'
 DG6218'NOTE A BAR MAGNET WAS IMBEDDED IN THE GROUND ON THE SOUTH SIDE OF THE
 DG6218'MONUMENT. NOTE FOR KEY CONTACT SOUTH FLORIDA WATER MANAGEMENT
 DG6218'DISTRICT AT (407) 686-8800.

DG6218
 DG6218 STATION RECOVERY (2010)
 DG6218
 DG6218'RECOVERY NOTE BY MORGAN AND EKLUND INC 2010 (MB)
 DG6218'RECOVERED AS DESCRIBED

*** retrieval complete.
 Elapsed Time = 00:00:02

The NGS Data Sheet

See file [dsdata.pdf](#) for more information about the datasheet.

```

PROGRAM = datasheet95, VERSION = 8.12.2
1      National Geodetic Survey,  Retrieval Date = AUGUST  8, 2017
DG6219 *****
DG6219 DESIGNATION -  X 577
DG6219 PID          -  DG6219
DG6219 STATE/COUNTY-  FL/OSCEOLA
DG6219 COUNTRY      -  US
DG6219 USGS QUAD    -  NARCOOSSEE (1970)
DG6219
DG6219                      *CURRENT SURVEY CONTROL
DG6219
DG6219* NAD 83(1986) POSITION- 28 20 03.      (N) 081 10 28.      (W)  SCALED
DG6219* NAVD 88 ORTHO HEIGHT -  19.299 (meters)      63.32  (feet) ADJUSTED
DG6219
DG6219 GEOID HEIGHT   -          -28.089 (meters)                      GEOID12B
DG6219 DYNAMIC HEIGHT -           19.270 (meters)                      63.22  (feet) COMP
DG6219 MODELED GRAVITY -    979,172.4 (mgal)                          NAVD 88
DG6219
DG6219 VERT ORDER     -  SECOND    CLASS I
DG6219
DG6219.The horizontal coordinates were scaled from a topographic map and have
DG6219.an estimated accuracy of +/- 6 seconds.
DG6219.
DG6219.The orthometric height was determined by differential leveling and
DG6219.adjusted by the NATIONAL GEODETIC SURVEY
DG6219.in September 2004.
DG6219
DG6219.No vertical observational check was made to the station.
DG6219
DG6219.Significant digits in the geoid height do not necessarily reflect accuracy.
DG6219.GEOID12B height accuracy estimate available here.
DG6219
DG6219.The dynamic height is computed by dividing the NAVD 88
DG6219.geopotential number by the normal gravity value computed on the
DG6219.Geodetic Reference System of 1980 (GRS 80) ellipsoid at 45
DG6219.degrees latitude (g = 980.6199 gals.).
DG6219
DG6219.The modeled gravity was interpolated from observed gravity values.
DG6219
DG6219;          North          East      Units  Estimated Accuracy
DG6219;SPC FL E    -    443,250.    182,900.    MT    (+/- 180 meters Scaled)
DG6219
DG6219_U.S. NATIONAL GRID SPATIAL ADDRESS: 17RMM829342(NAD 83)
DG6219
DG6219                      SUPERSEDED SURVEY CONTROL
DG6219
DG6219.No superseded survey control is available for this station.
DG6219
DG6219_MARKER: DD = SURVEY DISK
DG6219_SETTING: 7 = SET IN TOP OF CONCRETE MONUMENT
DG6219_STAMPING: X 577 2003

```

DG6219_MARK LOGO: FLDEP

DG6219_PROJECTION: FLUSH

DG6219_MAGNETIC: M = MARKER EQUIPPED WITH BAR MAGNET

DG6219_STABILITY: C = MAY HOLD, BUT OF TYPE COMMONLY SUBJECT TO

DG6219+STABILITY: SURFACE MOTION

DG6219_SATELLITE: THE SITE LOCATION WAS REPORTED AS NOT SUITABLE FOR

DG6219+SATELLITE: SATELLITE OBSERVATIONS - February 06, 2003

DG6219

DG6219	HISTORY	- Date	Condition	Report By
DG6219	HISTORY	- 20030206	MONUMENTED	FLDEP

DG6219

DG6219 STATION DESCRIPTION

DG6219

DG6219'DESCRIBED BY FL DEPT OF ENV PRO 2003 (JLM)

DG6219'THE MARK IS ABOUT 14.0 MI NORTHWEST OF HOLOPAW, 12.0 MI EAST-NORTHEAST

DG6219'OF ST. CLOUD, 10.0 MI NORTHEAST OF ASHTON, IN SECTION 1, TOWNSHIP 25

DG6219'SOUTH, RANGE 31 EAST.

DG6219'

DG6219'TO REACH THE MARK FROM THE JUNCTION OF U.S. HIGHWAY 192, 441 (13TH

DG6219'STREET) AND COUNTY ROAD 523 (VERMONT AVENUE, CANOE CREEK ROAD) IN ST.

DG6219'CLOUD, GO EAST ON U.S. HIGHWAY 192, 441 (13TH STREET, EAST BRONSON

DG6219'HIGHWAY) FOR 3.0 MI TO THE INTERSECTION OF STATE ROAD 15, CONTINUE

DG6219'EAST ON U.S. HIGHWAY 192, 441 (BRONSON HIGHWAY) FOR 1.25 MI TO THE

DG6219'JUNCTION OF NOVA ROAD (COUNTY ROAD 532) ON THE LEFT, TURN LEFT ON

DG6219'NOVA ROAD (COUNTY ROAD 532) AND GO NORTHEAST FOR 3.65 MI TO THE WEST

DG6219'END OF CANAL C-32C AND THE JUNCTION OF SUNGROVE LANE, TURN LEFT ON

DG6219'SUNGROVE LANE AND GO NORTH FOR APPROXIMATELY 100.0 FT TO A LOCKED

DG6219'GATED, CONTINUE NORTH ON SUNGROVE LANE FOR 4.95 MI TO THE MARK ON THE

DG6219'LEFT, SET IN THE TOP OF A ROUND CONCRETE MONUMENT FLUSH WITH THE

DG6219'GROUND AND ABOUT 2.0 FT BELOW THE LEVEL SUNGROVE LANE.

DG6219'

DG6219'LOCATED 118.5 FT WEST OF THE APPROXIMATE CENTERLINE OF THE ROAD, 113.0

DG6219'FT NORTH OF A 42-INCH OAK TREE ON THE EAST SIDE OF A FENCE, 66.2 FT

DG6219'SOUTH OF A 42-INCH OAK TREE ON THE EAST SIDE OF A FENCE, 40.7 FT

DG6219'NORTH OF A 4-INCH SQUARE CONCRETE RIGHT-OF-WAY MARKER NUMBER FCD

DG6219'C30WPG, 29.0 FT SOUTH OF A 4-INCH SQUARE CONCRETE RIGHT-OF-WAY MARKER

DG6219'NUMBER FCD G30W7 AND 1.0 FT EAST OF A BARBWIRE FENCE AND A CARSONITE

DG6219'WITNESS POST.

DG6219'

DG6219'NOTE A BAR MAGNET WAS IMBEDDED IN THE GROUND ON THE SOUTH SIDE OF THE

DG6219'MONUMENT. NOTE FOR KEY CONTACT SOUTH FLORIDA WATER MANAGEMENT

DG6219'DISTRICT AT 407-686-8800.

*** retrieval complete.

Elapsed Time = 00:00:01

The NGS Data Sheet

See file [dsdata.pdf](#) for more information about the datasheet.

```

PROGRAM = datasheet95, VERSION = 8.12.2
1      National Geodetic Survey,  Retrieval Date = AUGUST  8, 2017
DG6224 *****
DG6224 DESIGNATION - OS 96
DG6224 PID - DG6224
DG6224 STATE/COUNTY- FL/OSCEOLA
DG6224 COUNTRY - US
DG6224 USGS QUAD - NARCOOSSEE (1970)
DG6224
DG6224 *CURRENT SURVEY CONTROL
DG6224
DG6224 *-----*
DG6224* NAD 83(1986) POSITION- 28 19 33. (N) 081 10 06. (W) SCALED
DG6224* NAVD 88 ORTHO HEIGHT - 18.761 (meters) 61.55 (feet) ADJUSTED
DG6224 *-----*
DG6224 GEOID HEIGHT - -28.093 (meters) GEOID12B
DG6224 DYNAMIC HEIGHT - 18.733 (meters) 61.46 (feet) COMP
DG6224 MODELED GRAVITY - 979,171.4 (mgal) NAVD 88
DG6224
DG6224 VERT ORDER - SECOND CLASS I
DG6224
DG6224.The horizontal coordinates were scaled from a topographic map and have
DG6224.an estimated accuracy of +/- 6 seconds.
DG6224.
DG6224.The orthometric height was determined by differential leveling and
DG6224.adjusted by the NATIONAL GEODETIC SURVEY
DG6224.in September 2004.
DG6224
DG6224.No vertical observational check was made to the station.
DG6224
DG6224.Significant digits in the geoid height do not necessarily reflect accuracy.
DG6224.GEOID12B height accuracy estimate available here.
DG6224
DG6224.The dynamic height is computed by dividing the NAVD 88
DG6224.geopotential number by the normal gravity value computed on the
DG6224.Geodetic Reference System of 1980 (GRS 80) ellipsoid at 45
DG6224.degrees latitude (g = 980.6199 gals.).
DG6224
DG6224.The modeled gravity was interpolated from observed gravity values.
DG6224
DG6224; North East Units Estimated Accuracy
DG6224;SPC FL E - 442,330. 183,490. MT (+/- 180 meters Scaled)
DG6224
DG6224_U.S. NATIONAL GRID SPATIAL ADDRESS: 17RMM834333(NAD 83)
DG6224
DG6224 SUPERSEDED SURVEY CONTROL
DG6224
DG6224.No superseded survey control is available for this station.
DG6224
DG6224_MARKER: DD = SURVEY DISK
DG6224_SETTING: 7 = SET IN TOP OF CONCRETE MONUMENT
DG6224_STAMPING: BM OS-96 1980

```

DG6224_MARK LOGO: SFLWMD

DG6224_PROJECTION: RECESSED 5 CENTIMETERS

DG6224_MAGNETIC: M = MARKER EQUIPPED WITH BAR MAGNET

DG6224_STABILITY: C = MAY HOLD, BUT OF TYPE COMMONLY SUBJECT TO

DG6224+STABILITY: SURFACE MOTION

DG6224_SATELLITE: THE SITE LOCATION WAS REPORTED AS NOT SUITABLE FOR

DG6224+SATELLITE: SATELLITE OBSERVATIONS - December 05, 2002

DG6224

DG6224	HISTORY	- Date	Condition	Report By
DG6224	HISTORY	- 1980	MONUMENTED	SFLWMD
DG6224	HISTORY	- 20021205	GOOD	FLDEP

DG6224

DG6224 STATION DESCRIPTION

DG6224

DG6224'DESCRIBED BY FL DEPT OF ENV PRO 2002 (JLM)

DG6224'THE MARK IS ABOUT 13.0 MI NORTHWEST OF HOLOPAW, 11.0 MI EAST-NORTHEAST

DG6224'OF ST. CLOUD, 9.0 MI NORTHEAST OF ASHTON, IN SECTION 12, TOWNSHIP 25

DG6224'SOUTH, RANGE 31 EAST.

DG6224'

DG6224'TO REACH THE MARK FROM THE JUNCTION OF U.S. HIGHWAY 192, 441 (13TH

DG6224'STREET) AND COUNTY ROAD 523 (VERMONT AVENUE, CANOE CREEK ROAD) IN ST.

DG6224'CLOUD, GO EAST ON U.S. HIGHWAY 192, 441 (13TH STREET, EAST BRONSON

DG6224'HIGHWAY) FOR 3.0 MI TO THE INTERSECTION OF STATE ROAD 15, CONTINUE

DG6224'EAST ON U.S. HIGHWAY 192, 441 (BRONSON HIGHWAY) FOR 1.25 MI TO THE

DG6224'JUNCTION OF NOVA ROAD (COUNTY ROAD 532) ON THE LEFT, TURN LEFT ON

DG6224'NOVA ROAD (COUNTY ROAD 532) AND GO NORTHEAST FOR 3.65 MI TO THE WEST

DG6224'END OF CANAL C-32C AND THE JUNCTION OF SUNGROVE LANE, TURN LEFT ON

DG6224'SUNGROVE LANE AND GO NORTH FOR APPROXIMATELY 100.0 FT TO A LOCKED

DG6224'GATED, CONTINUE NORTH ON SUNGROVE LANE FOR 4.2 MI TO THE MARK ON THE

DG6224'RIGHT, SET IN THE TOP OF A ROUND CONCRETE MONUMENT RECESSED 0.2 FT

DG6224'BELOW THE LEVEL OF THE GROUND AND ABOUT 1.0 FT BELOW THE LEVEL OF

DG6224'SUNGROVE LANE.

DG6224'

DG6224'LOCATED 160.0 FT SOUTHWEST OF THE CANAL, 28.6 FT SOUTHEAST OF THE

DG6224'APPROXIMATE CENTERLINE OF SUNGROVE LANE, 21.8 FT SOUTH-SOUTHWEST OF

DG6224'THE NORTHWEST CORNER OF A BARBWIRE FENCE, 1.8 FT SOUTHWEST OF A

DG6224'6-INCH WOODEN POST WITH A SFLWMD SIGN AND 0.9 FT NORTHWEST OF A

DG6224'BARBWIRE FENCE.

DG6224'

DG6224'NOTE A BAR MAGNET WAS IMBEDDED IN THE GROUND ON THE SOUTH SIDE OF THE

DG6224'MONUMENT. NOTE FOR KEY CONTACT SOUTH FLORIDA WATER MANAGEMENT

DG6224'DISTRICT AT (407) 686-8800.

*** retrieval complete.

Elapsed Time = 00:00:01

Project Information		Coordinate System	
Name:		Name:	Default
Size:		Datum:	WGS 1984
Modified:	2/15/2012 8:48:57 AM (UTC:-7)	Zone:	Default
Time zone:	Mountain Standard Time	Geoid:	
Reference number:		Vertical datum:	
Description:			

Level Report

Imported file: [OSF111.DAT](#)
Instrument: DiNi
Standard error per kilometer of double leveling: 0.00230 ft
Standard error per turn/station setup: 0.00000 ft
Creation option: Delta elevations
Description usage: Feature codes

Run - 2 Raw Observations

Raw Misclosure: 0.01100 ft
Σ BS Distances: 2703.210 ft
Σ FS Distances: 2648.040 ft
Run Length: 5351.250 ft
Reduction: Adjusted Values

Create	Point ID	BS	IS	FS	Δ Elevation	Raw Elevation	Correction	Adj. Elevation	Type	Distance	Description
<input checked="" type="checkbox"/>	1	<input checked="" type="checkbox"/> 6.27700 ft			0.00000 ft	62.990 ft	0.00000 ft	62.990 ft ▲	Benchmark	199.180 ft	W577 3
<input type="checkbox"/>	2			<input checked="" type="checkbox"/> 5.19300 ft	1.08400 ft	64.074 ft	-0.00078 ft	64.073 ft	Computed	189.600 ft	3
	2	<input checked="" type="checkbox"/> 5.39600 ft								200.980 ft	3
<input type="checkbox"/>	3			<input checked="" type="checkbox"/> 5.35300 ft	0.04300 ft	64.117 ft	-0.00160 ft	64.115 ft	Computed	198.160 ft	3
	3	<input checked="" type="checkbox"/> 5.62600 ft								198.820 ft	3
<input type="checkbox"/>	4			<input checked="" type="checkbox"/> 5.43100 ft	0.19500 ft	64.312 ft	-0.00242 ft	64.310 ft	Computed	199.540 ft	3
	4	<input checked="" type="checkbox"/> 3.14500 ft								224.670 ft	3
<input type="checkbox"/>	5			<input checked="" type="checkbox"/> 5.95100 ft	-2.80600 ft	61.506 ft	-0.00345 ft	61.503 ft	Computed	220.280 ft	OS96 3
	5	<input checked="" type="checkbox"/> 8.49900 ft								202.590 ft	OS96 3
<input type="checkbox"/>	6			<input checked="" type="checkbox"/> 5.34900 ft	3.15000 ft	64.656 ft	-0.00427 ft	64.652 ft	Computed	196.690 ft	3
	6	<input checked="" type="checkbox"/> 4.69200 ft								199.540 ft	3
<input type="checkbox"/>	7			<input checked="" type="checkbox"/> 4.88800 ft	-0.19600 ft	64.460 ft	-0.00505 ft	64.455 ft	Computed	188.620 ft	3
		<input checked="" type="checkbox"/> 5.29600								199.050	

	7	ft								ft	3
<input type="checkbox"/>	8		<input checked="" type="checkbox"/> 4.70700 ft	0.58900 ft	65.049 ft	-0.00586 ft	65.043 ft	Computed	198.030 ft	3	
	8	<input checked="" type="checkbox"/> 5.25200 ft							203.120 ft	3	
<input type="checkbox"/>	9		<input checked="" type="checkbox"/> 5.05000 ft	0.20200 ft	65.251 ft	-0.00669 ft	65.244 ft	Computed	197.010 ft	3	
	9	<input checked="" type="checkbox"/> 5.03900 ft							198.690 ft	3	
<input type="checkbox"/>	10		<input checked="" type="checkbox"/> 4.59500 ft	0.44400 ft	65.695 ft	-0.00750 ft	65.687 ft	Computed	196.950 ft	3	
	10	<input checked="" type="checkbox"/> 4.43600 ft							203.250 ft	3	
<input type="checkbox"/>	11		<input checked="" type="checkbox"/> 5.53200 ft	-1.09600 ft	64.599 ft	-0.00834 ft	64.591 ft	Computed	200.460 ft	3	
	11	<input checked="" type="checkbox"/> 4.84200 ft							202.160 ft	3	
<input type="checkbox"/>	12		<input checked="" type="checkbox"/> 4.35300 ft	0.48900 ft	65.088 ft	-0.00916 ft	65.079 ft	Computed	194.850 ft	3	
	12	<input checked="" type="checkbox"/> 4.66000 ft							199.110 ft	3	
<input type="checkbox"/>	13		<input checked="" type="checkbox"/> 4.91000 ft	-0.25000 ft	64.838 ft	-0.00996 ft	64.828 ft	Computed	196.030 ft	3	
	13	<input checked="" type="checkbox"/> 4.34100 ft							217.390 ft	3	
<input type="checkbox"/>	14		<input checked="" type="checkbox"/> 4.33500 ft	0.00600 ft	64.844 ft	-0.01094 ft	64.833 ft	Computed	216.600 ft	3	
	14	<input checked="" type="checkbox"/> 3.71100 ft							54.660 ft	3	
<input checked="" type="checkbox"/>	15		<input checked="" type="checkbox"/> 5.22400 ft	-1.51300 ft	63.331 ft	-0.01100 ft	63.320 ft ▲	Benchmark	55.220 ft	X577 3	

Run - 2 (N1) Reduced Observations

Observation	Status	Raw Δ Elevation	Correction	Final Δ Elevation	Setups	Length	Σ BS Readings	Σ FS Readings	Std. Error
1-15 (E1)	Enabled	0.34100 ft	-0.01100 ft	0.33000 ft	14	5351.250 ft	71.21200 ft	70.87100 ft	0.03806 ft

Run - 2 (N1) Reduced Coordinates

Point ID	Status	Elevation
1	Enabled	62.99000 ft
15	Enabled	63.32000 ft

Run - 3 Raw Observations

Raw Misclosure: 0.00300 ft
 Σ BS Distances: 396.960 ft
 Σ FS Distances: 389.110 ft
 Run Length: 786.070 ft
 Reduction: Adjusted Values

Point	Δ	Raw	Adj.
-------	---	-----	------

Create	ID	BS	IS	FS	Elevation	Elevation	Correction	Elevation	Type	Distance	Description
<input checked="" type="checkbox"/>	20	<input checked="" type="checkbox"/> 6.94200 ft			0.00000 ft	61.503 ft	0.00000 ft	61.503 ft ▲	Benchmark	63.520 ft	OS96 3
<input type="checkbox"/>	16			<input checked="" type="checkbox"/> 4.96800 ft	1.97400 ft	63.477 ft	-0.00029 ft	63.477 ft	Computed	65.290 ft	3
	16	<input checked="" type="checkbox"/> 4.56900 ft								137.240 ft	3
<input type="checkbox"/>	17			<input checked="" type="checkbox"/> 5.45200 ft	-0.88300 ft	62.594 ft	-0.00150 ft	62.593 ft	Computed	127.000 ft	OS111 3
	17	<input checked="" type="checkbox"/> 5.29000 ft								132.320 ft	OS111 3
<input type="checkbox"/>	18			<input checked="" type="checkbox"/> 4.40500 ft	0.88500 ft	63.479 ft	-0.00271 ft	63.476 ft	Computed	131.990 ft	3
	18	<input checked="" type="checkbox"/> 5.14900 ft								63.880 ft	3
<input checked="" type="checkbox"/>	19			<input checked="" type="checkbox"/> 7.12200 ft	-1.97300 ft	61.506 ft	-0.00300 ft	61.503 ft ▲	Benchmark	64.830 ft	OS96 3

Run - 3 (N2) Reduced Observations

Observation	Status	Raw Δ Elevation	Correction	Final Δ Elevation	Setups	Length	Σ BS Readings	Σ FS Readings	Std. Error
20-19 (E2)	Enabled	0.00300 ft	-0.00300 ft	0.00000 ft	4	786.070 ft	21.95000 ft	21.94700 ft	0.01085 ft

Run - 3 (N2) Reduced Coordinates

Point ID	Status	Elevation
20	Enabled	61.50300 ft
19	Enabled	61.50300 ft

Run - 10001 Raw Observations

Raw Misclosure: ?

Σ BS Distances: 45.050 ft

Σ FS Distances: 44.980 ft

Run Length: 90.030 ft

Reduction: Adjusted Values

Create	Point ID	BS	IS	FS	Δ Elevation	Raw Elevation	Correction	Adj. Elevation	Type	Distance	Description
<input checked="" type="checkbox"/>	50	<input checked="" type="checkbox"/> 5.38400 ft			0.00000 ft	62.593 ft	0.00000 ft	62.593 ft ▲	Benchmark	45.050 ft	OS111 3
<input checked="" type="checkbox"/>	51			<input checked="" type="checkbox"/> 2.71500 ft	2.66900 ft	65.262 ft	0.00000 ft	65.262 ft	Computed	44.980 ft	REFPT 3
<input checked="" type="checkbox"/>	52		<input checked="" type="checkbox"/> 5.42700 ft		-0.04300 ft	62.550 ft	0.00000 ft	62.550 ft	Computed	47.540 ft	CCPAD 3
<input checked="" type="checkbox"/>	53		<input checked="" type="checkbox"/> 5.37600 ft		0.00800 ft	62.601 ft	0.00000 ft	62.601 ft	Computed	44.390 ft	CCPAD 3
<input checked="" type="checkbox"/>	54		<input checked="" type="checkbox"/> 5.42200 ft		-0.03800 ft	62.555 ft	0.00000 ft	62.555 ft	Computed	42.450 ft	CCPAD 3
<input checked="" type="checkbox"/>	55		<input checked="" type="checkbox"/> 5.43300 ft		-0.04900 ft	62.544 ft	0.00000 ft	62.544 ft	Computed	45.730 ft	CCPAD 3
			<input checked="" type="checkbox"/> 5.88400 ft		-0.50000 ft						

<input checked="" type="checkbox"/>	56		ft		ft	62.093 ft	0.00000 ft	62.093 ft	Computed	48.720 ft	GRND 3
<input checked="" type="checkbox"/>	57		<input checked="" type="checkbox"/> 5.82500 ft		-0.44100 ft	62.152 ft	0.00000 ft	62.152 ft	Computed	44.230 ft	GRND 3
<input checked="" type="checkbox"/>	58		<input checked="" type="checkbox"/> 5.92600 ft		-0.54200 ft	62.051 ft	0.00000 ft	62.051 ft	Computed	41.080 ft	GRND 3
<input checked="" type="checkbox"/>	59		<input checked="" type="checkbox"/> 6.01400 ft		-0.63000 ft	61.963 ft	0.00000 ft	61.963 ft	Computed	46.000 ft	GRND 3
<input checked="" type="checkbox"/>	60		<input checked="" type="checkbox"/> 5.38400 ft		0.00000 ft	62.593 ft	0.00000 ft	62.593 ft	Computed	45.010 ft	OS111 3

Run - 10001 (N3) Reduced Observations

Observation	Status	Raw Δ Elevation	Correction	Final Δ Elevation	Setups	Length	Σ BS Readings	Σ FS Readings	Std. Error
50-51 (E3)	Enabled	2.66900 ft	0.00000 ft	2.66900 ft	1	90.030 ft	5.38400 ft	2.71500 ft	0.00235 ft
50-52 (E4)	Enabled	-0.04300 ft	0.00000 ft	-0.04300 ft	1	92.590 ft	5.38400 ft	5.42700 ft	0.00242 ft
50-53 (E5)	Enabled	0.00800 ft	0.00000 ft	0.00800 ft	1	89.440 ft	5.38400 ft	5.37600 ft	0.00233 ft
50-54 (E6)	Enabled	-0.03800 ft	0.00000 ft	-0.03800 ft	1	87.500 ft	5.38400 ft	5.42200 ft	0.00228 ft
50-55 (E7)	Enabled	-0.04900 ft	0.00000 ft	-0.04900 ft	1	90.780 ft	5.38400 ft	5.43300 ft	0.00237 ft
50-56 (E8)	Enabled	-0.50000 ft	0.00000 ft	-0.50000 ft	1	93.770 ft	5.38400 ft	5.88400 ft	0.00245 ft
50-57 (E9)	Enabled	-0.44100 ft	0.00000 ft	-0.44100 ft	1	89.280 ft	5.38400 ft	5.82500 ft	0.00233 ft
50-58 (E10)	Enabled	-0.54200 ft	0.00000 ft	-0.54200 ft	1	86.130 ft	5.38400 ft	5.92600 ft	0.00225 ft
50-59 (E11)	Enabled	-0.63000 ft	0.00000 ft	-0.63000 ft	1	91.050 ft	5.38400 ft	6.01400 ft	0.00238 ft
50-60 (E12)	Enabled	0.00000 ft	0.00000 ft	0.00000 ft	1	90.060 ft	5.38400 ft	5.38400 ft	0.00235 ft

Run - 10001 (N3) Reduced Coordinates

Point ID	Status	Elevation
50	Enabled	62.59300 ft

Date: 8/8/2017 8:23:30 AM	Project:	Trimble Business Center
---------------------------	----------	-------------------------

Office

Project

8 August 2017

INPUT

State Plane, flhpgn - Florida HPGN
0901 - Florida East, U.S. Feet
Vertical - NAVD88, U.S. Feet

OUTPUT

Geographic, flhpgn - Florida HPGN
Vertical - NGVD29 (Custom), U.S. Feet

OSF111

1/1

Northing/Y: 1450997

Easting/X: 601982

Elevation/Z: 0

Convergence: -0 04 47.68803

Scale Factor: 0.999944542

Combined Factor: 0.999948944

Latitude: 28 19 30.94891

Longitude: 81 10 06.32600

Elevation/Z: 1.073

Remark:

Corpscon v6.0.1, U.S. Army Corps of Engineers