

WELL	OSF-111	PROJECT	SFWMD OBI Logging	DATE OF COMPLETION	September 2018
LOCATION	28-19-31.35 N (GPS, NAD 83)	ELEVATION	Pad 63.45 Feet (Survey, NAVD88)	WELL DEPTH	1,653 Feet TD
	080-10-01.29 W	DATE OF OBI/ABI LOGGING	20 September 2018		



1165

1170

1175

1180

1185

1190

1195

1200

1205

1210

1215



1220

1225

1230

1235

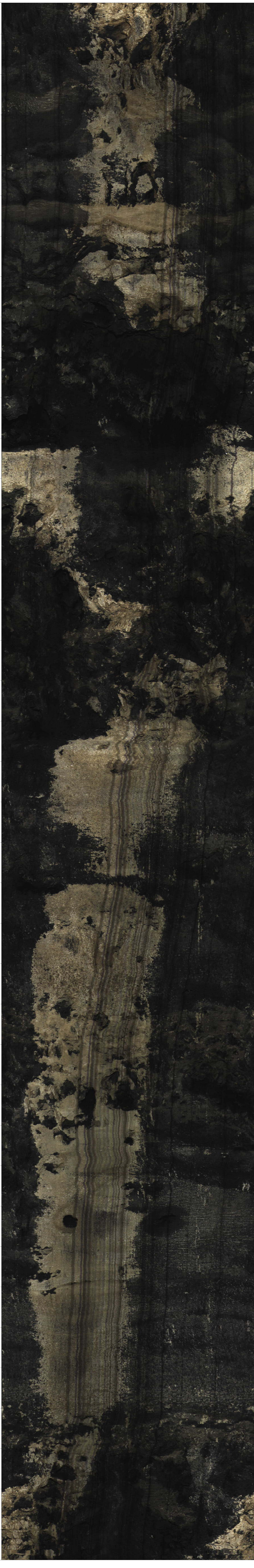


1240

1245

1250

1255

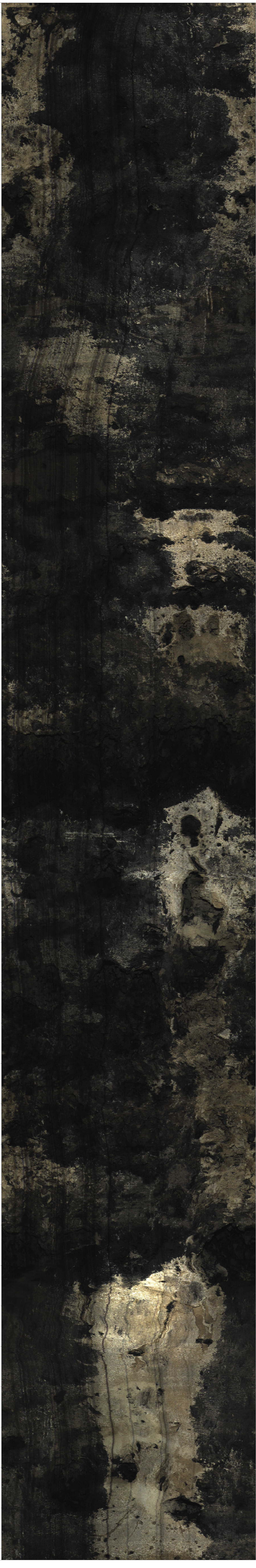


1260

1265

1270

1275



1280

1285

1290

1295



1300

1305

1310

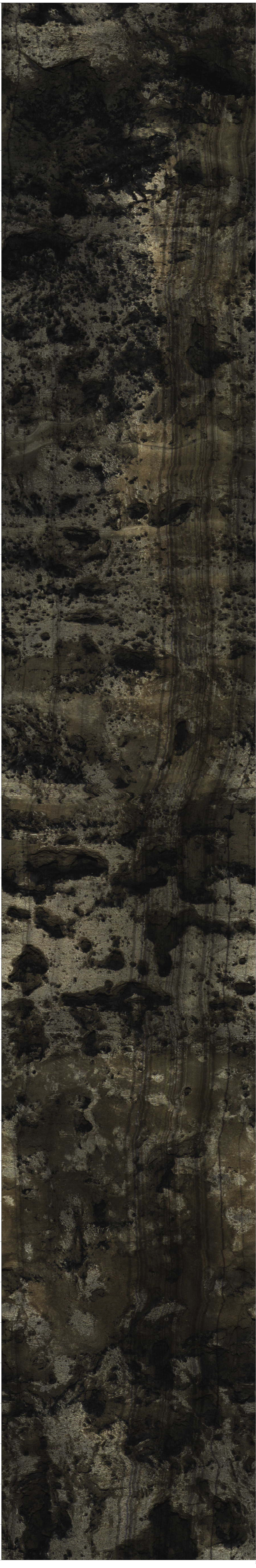
1315



1320

1325

1330



1335

1340

1345

1350



1355

1360

1365

1370



1375

1380

1385

1390



1395

1400

1405

1410



1415

1420

1425

1430

1435

1440

1445

1450

1455

1460

1465

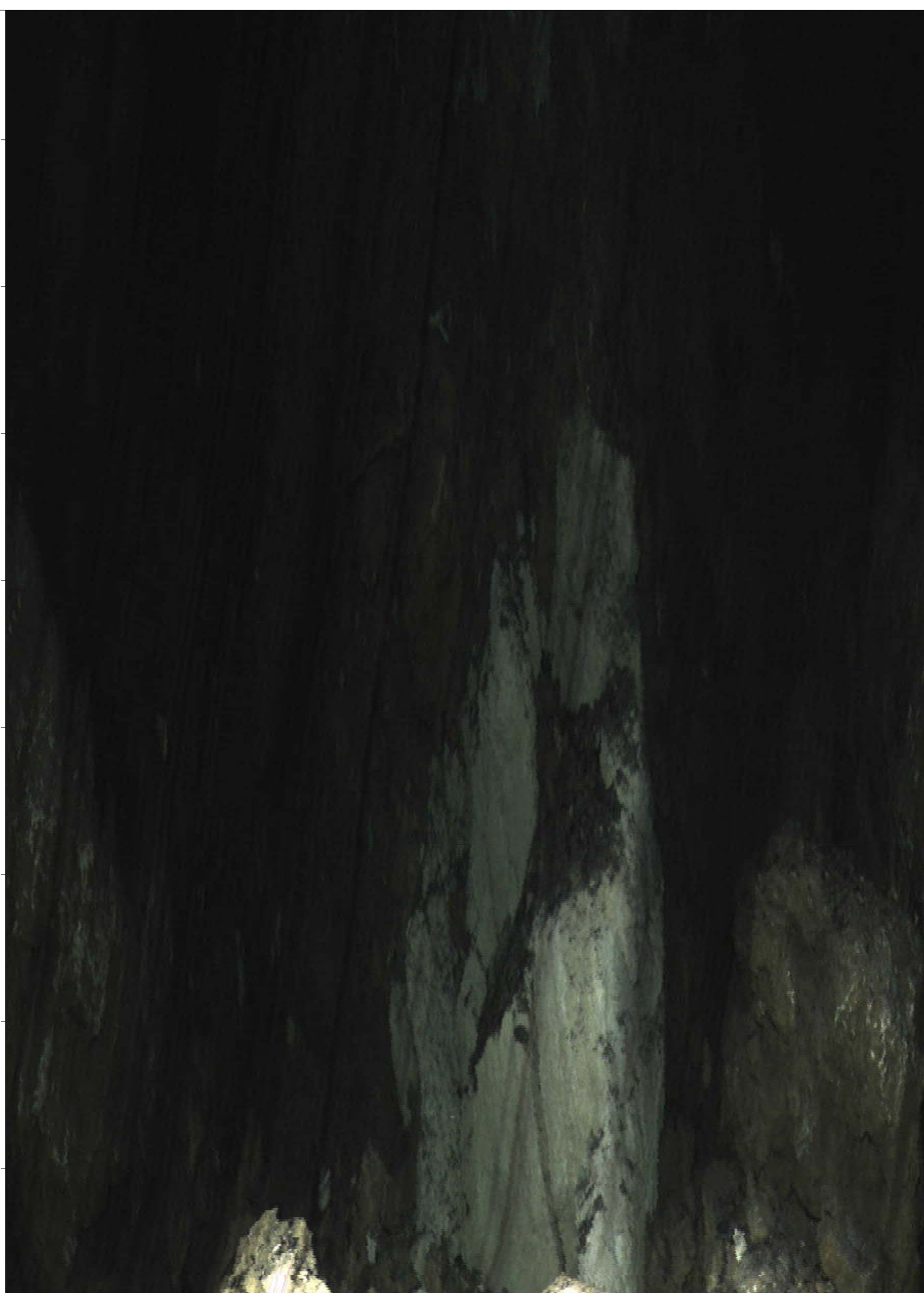
1470

1475

1480

1485

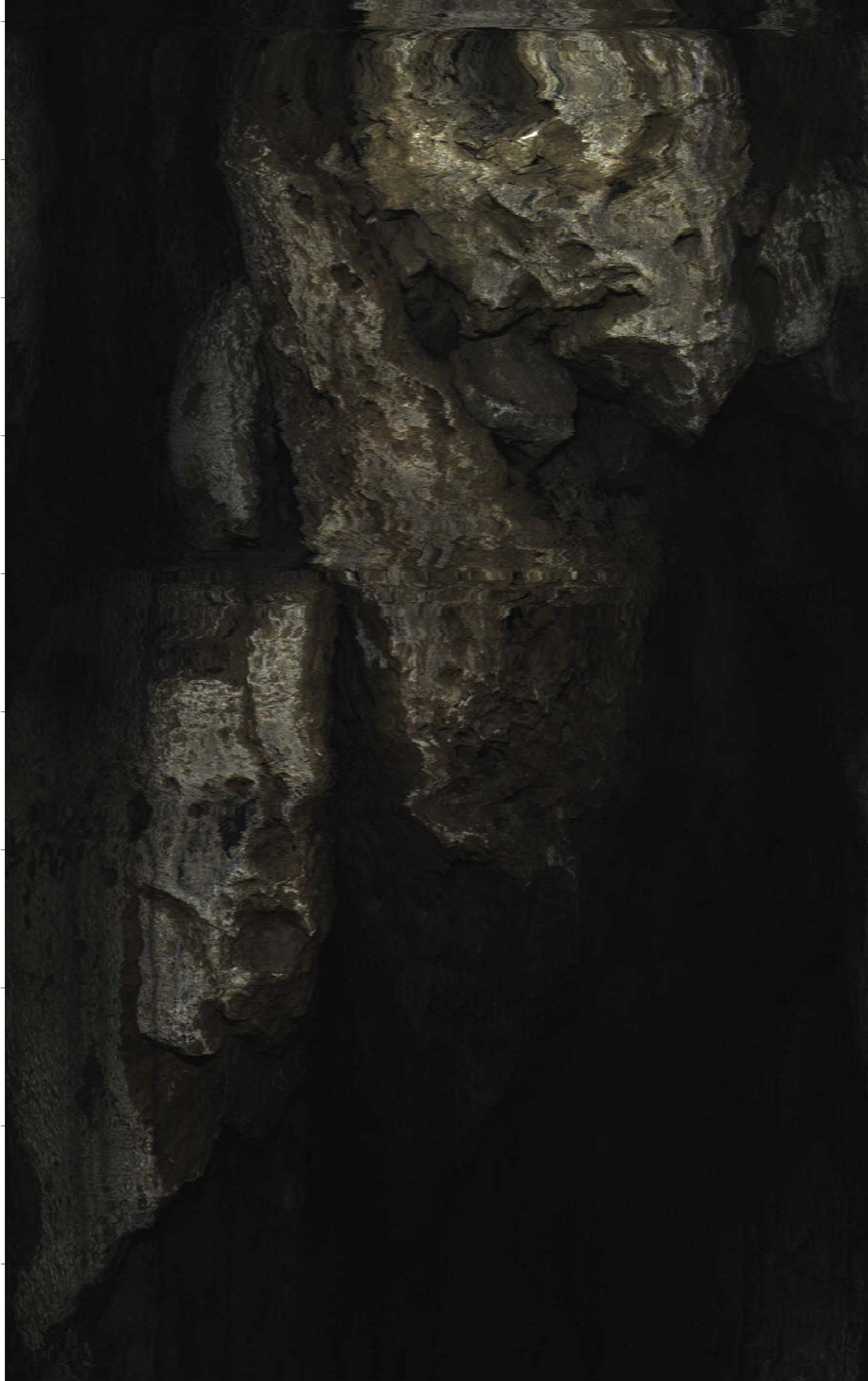
1490



1495



1500



1505



1510

1515

1520

1525



1530

1535

1540

1545



1550

1555

1560

1565



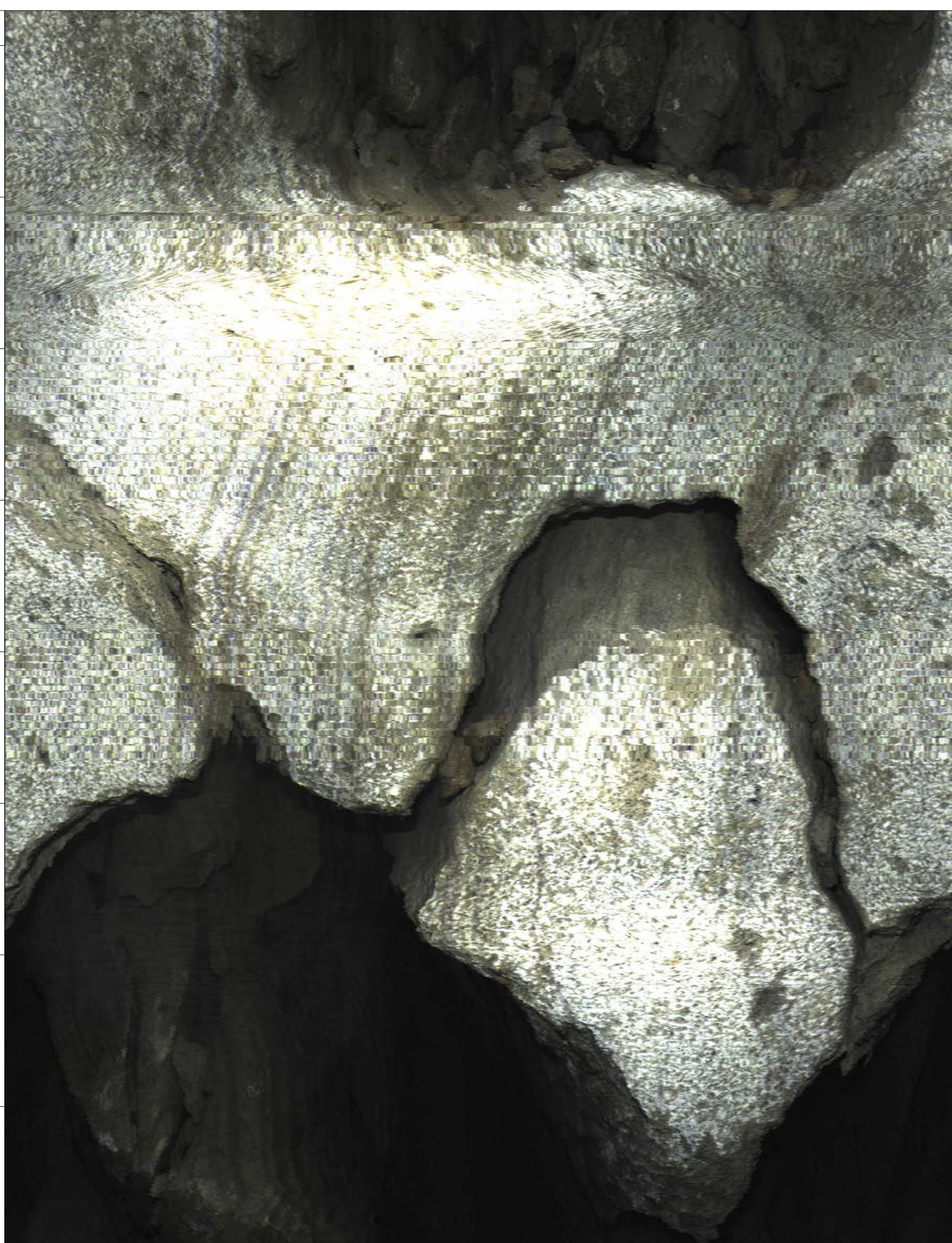


1570

1575

1580

1585



1590



1595



1600



1605

1610

1615

1620



