



RMBAKER LLC

WELL PB-1772
UWI PB-1772

Geology and Geophysics

8600 Oldbridge Lane
Orlando, FL 32819
mobile ph 407-733-8958

PROFESSIONAL LICENSES
Geologist PG2186
Licensed Geology Business

rob@rmbaker.com
www.rmbaker.com

HEADER NOTES:

COMP SFWMD
LOC LITTLE FENWAY AT MILLER PARK; 1905 SW 4TH AVE
FLD LOWER EAST COAST
CNTY PALM BEACH
STAT FL
PROV FL
CTRY USA

LATI X
LONG Y
GDAT WGS84 HDAT
SEC ELEV
TWP VDAT
RGE
PERMANENT DATUM: TOC
ALL SERVICES:
DUAL INDUCTION
NATURAL GAMMA

LOG MEASURED FROM: GROUND SURFACE - 0.3 FT ABOVE TOC

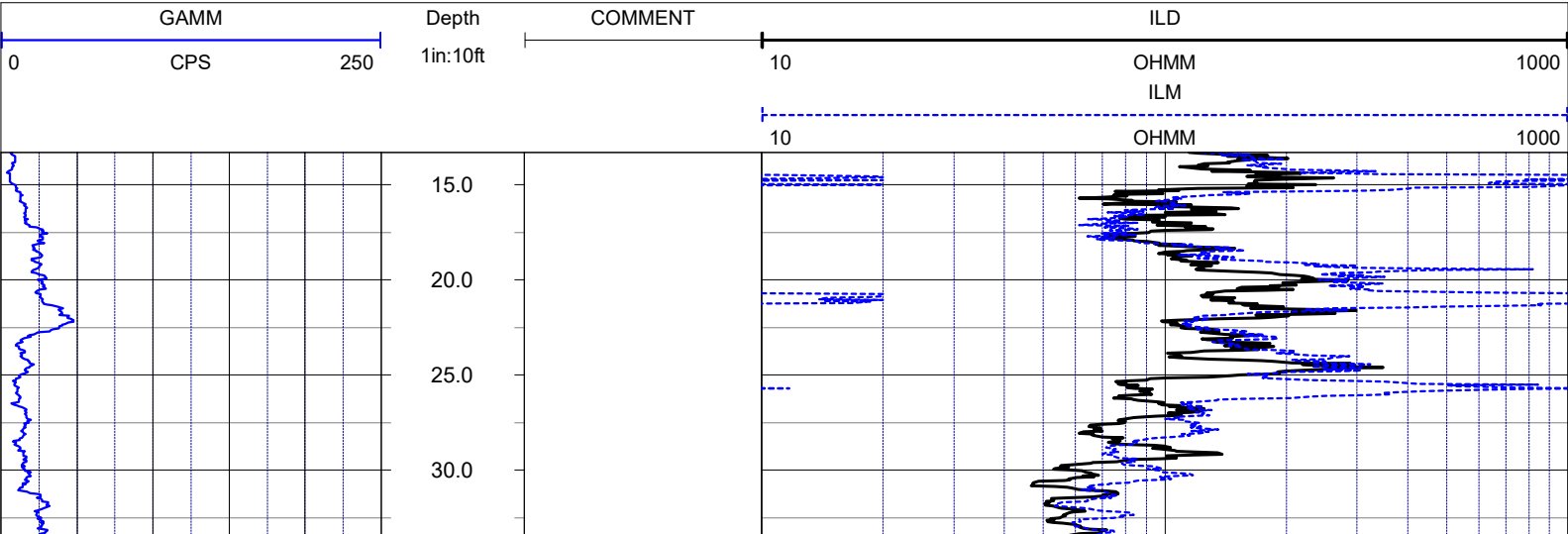
DRILLING MEASURED FROM: DATE 05 Aug 20 TYPE FLUID IN HOLE WATER

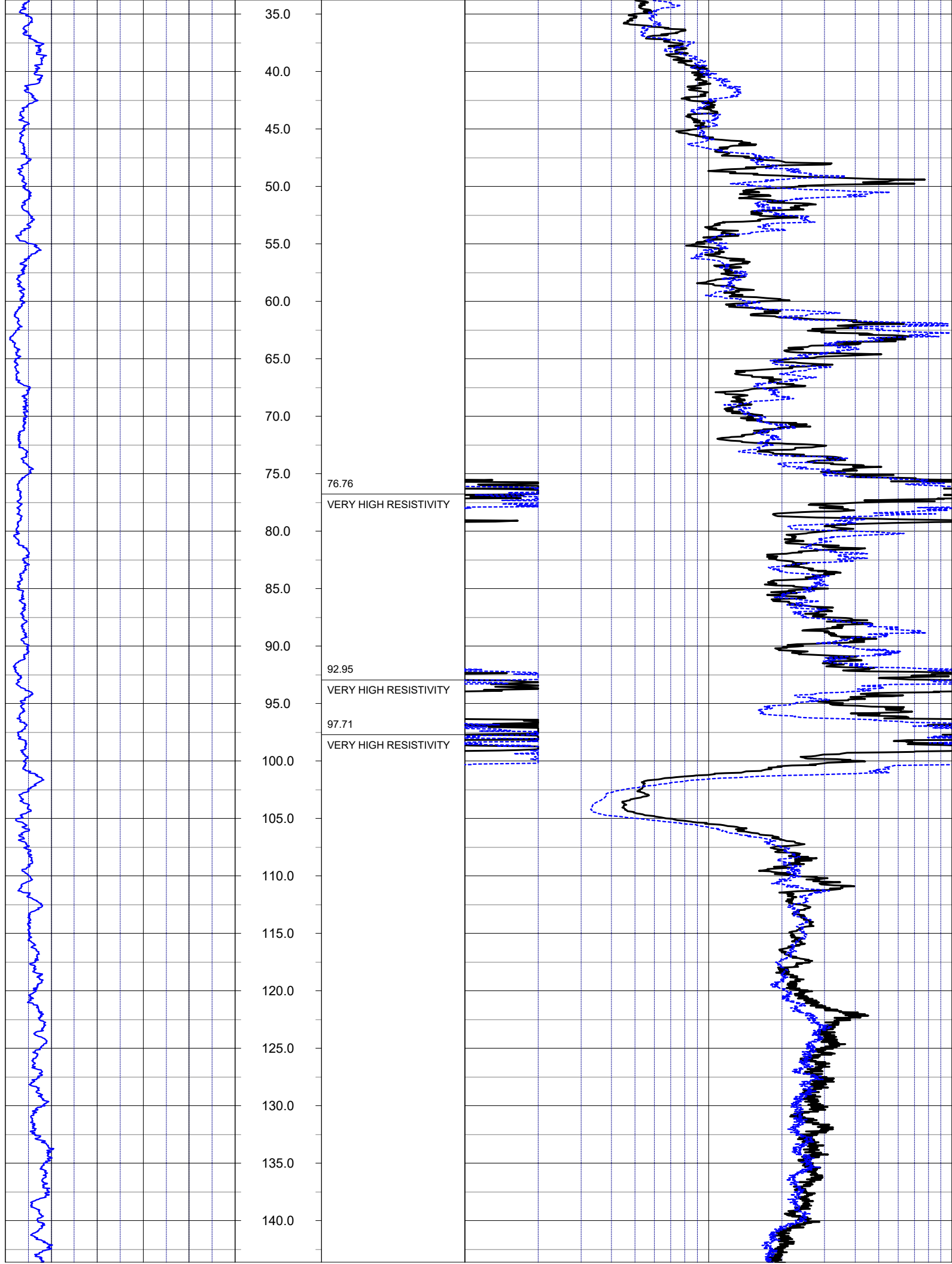
DATE	05 Aug 20	TYPE FLUID IN HOLE	WATER
RUN No	1	LOGGING SPEED (FT/MIN)	30
TYPE LOG	DUAL INDUCTION	TROLLING DIRECTION	UP
DEPTH-DRILLER	260	PUMPING RATE (GPM)	N/A
DEPTH-LOGGER	251.75		
DRILLER			
RECORDED BY	RMB		
SRVC	RMBAKER LLC	API	N/A
WITNESSED BY	SFWMD	LIC	N/A

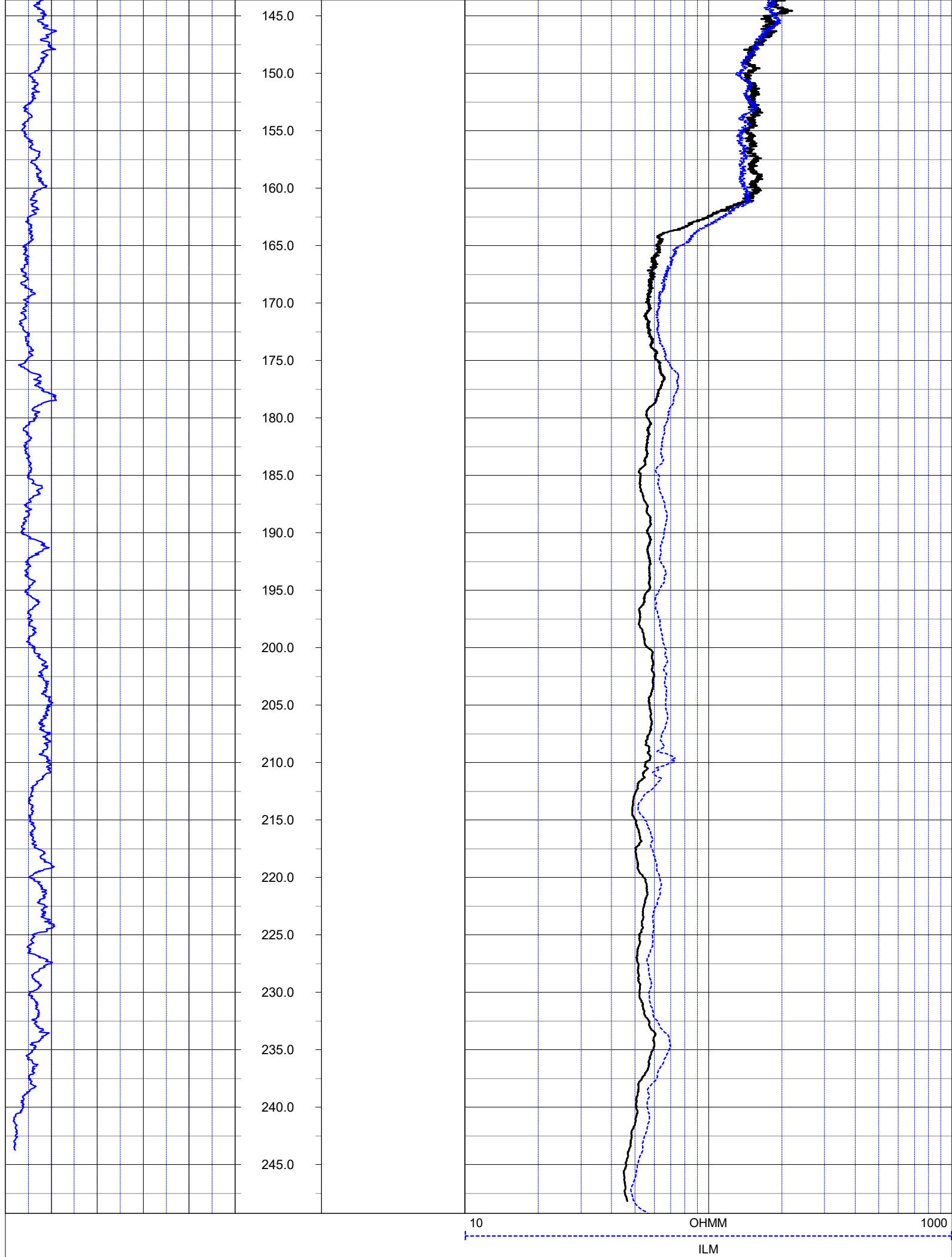
BOREHOLE RECORD		CASING RECORD				
RUN NO.	BIT FROM	TO	SIZE	MAT.	FROM	TO
1			2	PVC	0	260

LOG CODES

3-arm caliper	CAL	long normal resistivity	RLN	deep induction conductivity	IDC
natural gamma (CPS)	GAMM	8 inch resistivity	R8	shallow induction conductivity	ISC
spontaneous potential	ESP	32 inch resistivity	R32	sonic interval velocity	DT
single point resistance	RES	deep induction resistivity	ILD	sonic porosity (RHG method)	SPHI
short normal resistivity	RSN	shallow induction resistivity	ILM	repeat designation	R







0	CPS	250	1in:10ft	10	OHMM	1000
GAMM		Depth	COMMENT	ILD		

NOTES:

While due care has been exercised in the performance of these measurements and observations, in accordance with methodologies utilized by the general practitioner, RMLBAKER LLC can make no representations, warranties, or guarantees with respect to latent or concealed conditions that may exist, which may be beyond the detection capabilities of the methodologies used, or that may extend beyond the areas and depths surveyed.

The geophysical well logs show subsurface conditions as they existed at the dates and locations shown, and it is not warranted that they are representative of subsurface conditions at other locations and times. If, at any time, different subsurface conditions from those observed are determined to be present, we must be advised and allowed to review and revise our observations if necessary.

Florida Geology Business Licenced by PG2186

END OF LOG