



PB 620		Elevation:	10.73 ft	(NAVD 88)	12.24 ft	(NGVD 29)
Bench Mark 1:	T 402		16.28 ft	(NAVD 88)	17.80 ft	(NGVD 29)
Bench Mark 2:	U 402		20.74 ft	(NAVD 88)	22.25 ft	(NGVD 29)
Monitoring Well:	PB 620		10.03 ft	(NAVD 88)	11.54 ft	(NGVD 29)
Length of Run:	1.91 km		To Reach PB 620: FROM INTERSECTION OLD DIXIE HWY AND SILVER BEACH ROAD FOR 0.4 MILE TO 6 TH STREET. GO NORTH ON 6 TH STREET FOR +/- 100' AND CONCRETE MONUMENT WILL BE ON THE RIGHT. 16.4' WEST OF CENTERLINE 6 TH STREET, 4.8' EAST OF FACE OF SIDEWALK, 16.35' NORTH OF FIRE HYDRANT, 26.95' SOUTH OF PALM BEACH COUNTY SIGN SET MAGNET 1' NORTH CONCRETE MONUMENT.			
Max Allowable Misclosure:	11 mm					
Actual Misclosure:	7 mm					
						

PB 632		Elevation:	8.34 ft	(NAVD 88)	9.86 ft	(NGVD 29)
Bench Mark 1:	T 402		16.28 ft	(NAVD 88)	17.80 ft	(NGVD 29)
Bench Mark 2:	Y 309		11.77 ft	(NAVD 88)	13.28 ft	(NGVD 29)
Monitoring Well 1:	PB 632		7.86 ft	(NAVD 88)	9.38 ft	(NGVD 29)
Monitoring Well 2:	PB 633		7.72 ft	(NAVD 88)	9.24 ft	(NGVD 29)
Length of Run:	2.98 km		To Reach PB 632: FROM INTERSECTION BLUE HERON BLVD & FEDERAL HWY (US1). GO SOUTH ON FEDERAL HWY/US 1 FOR 0.2 MILE TO EAST 22 ND STREET. GO EAST ON EAST 22 ND STREET FOR 0.1 MILE TO AVENUE C. GO SOUTH ON AVENUE C FOR +/-125' TO CONCRETE MONUMENT ON LEFT. 2.5' WEST OF CHAIN LINK FENCE, 3.25' EAST OF BACK OF CURB, 22.35' SOUTH OF WOODEN LIGHT POLE, 96.15' NORTHEAST OF STOP SIGN. SET MAGNET 1' NORTH OF CONCRETE MONUMENT.			
Max Allowable Misclosure:	14 mm					
Actual Misclosure:	6 mm					
						

PB-620



Nick Miller, Inc.

Date of Photo: June 14, 2005

View: Looking at the well PB-620 facing north

PB-620



Nick Miller, Inc.
Date of Photo: June 14, 2005
View: Close-up of the well PB-620 showing the contractor's markings

PB-620



Nick Miller, Inc.

Date of Photo: June 14, 2005

View: Looking at the benchmark facing south

PB-620



Nick Miller, Inc.
Date of Photo: June 14, 2005
View: A top view of the benchmark

1078

SEWARD

SET CONC. MONUMENT AT
SITE OF MONITORING WELL PB 620

PB 620

- SET POURED - IN - PLACE CONCRETE MONUMENT
- SET MAGNET 1' NORTH OF CONC. MON.
- SET CONC. MON. 16.4' WEST OF E 6th STREET
- " " " 4.8' EAST OF FACE OF SIDEWALK
- " " " 16.35' NORTH OF FIRE HYDRANT
- " " " 76.93' SOUTH OF PALM BEACH COUNTY SIGN

STAMPED PB 620
2005

COORDINATES ON CONC. MON. PB 620

STATE PLANE 83

N. 272757.020 m

E. 292980.144 m

INGS 94

N. 26° 47' 33" 032

W. 080° 03' 53" 134

COORDINATES ON MONITORING WELL PB 620

STATE PLANE 83

N. 272712.184 m

E. 292976.354 m

INGS 94

N. 26° 47' 31" 576

W. 080° 03' 53" 783

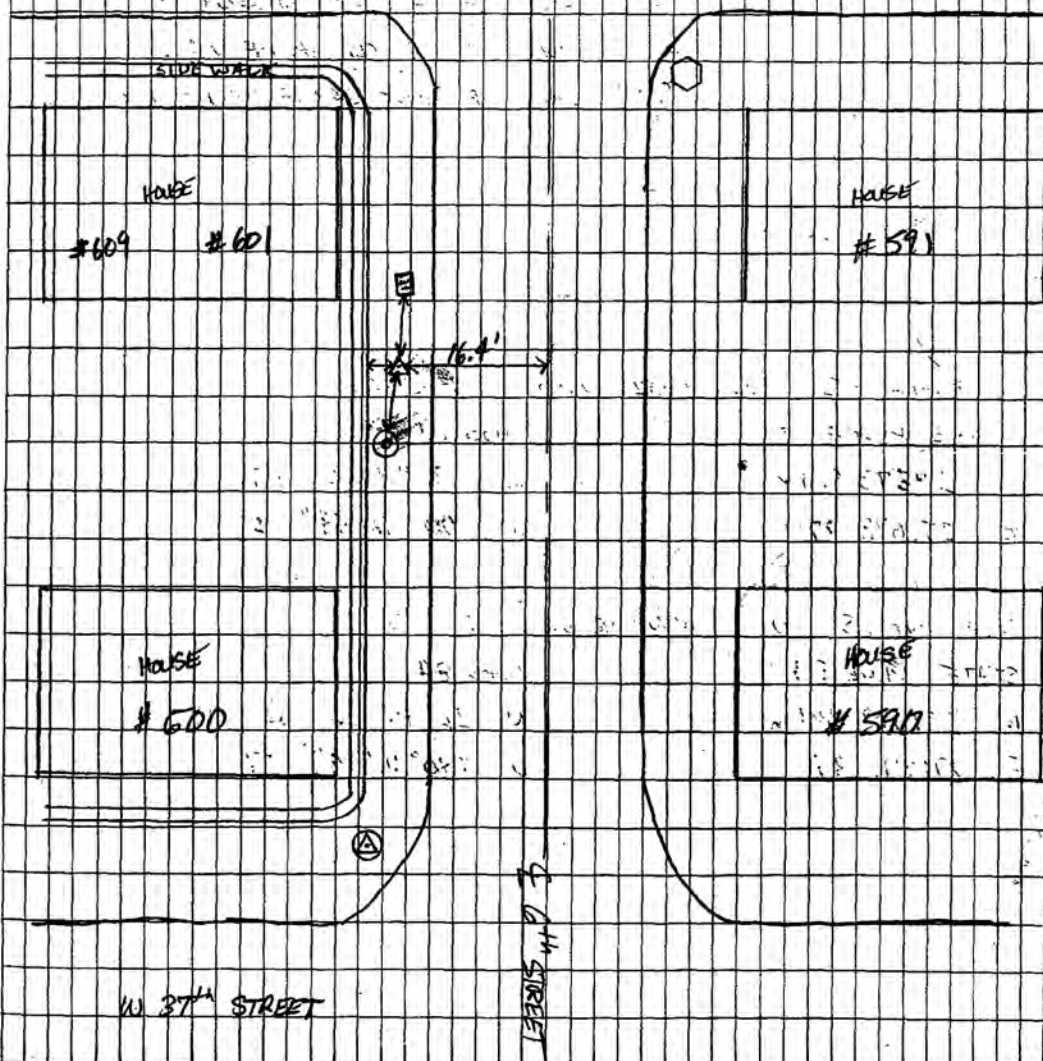
TUES. JUNE 14, 2005

4-70

E. DETASSIS
R. BLAIR

- ⬡ - STOP SIGN
- △ - CONCRETE MONUMENT
- ⊕ - MONITORING WELL
- ⊙ - FIRE HYDRANT
- ⊞ - PALM BEACH COUNTY SIGN

SILVER BEACH ROAD





SOUTH FLORIDA WATER MANAGEMENT DISTRICT

Rev. 4/01

COUNTY	PALM BEACH		PROJECT	Hydrology – Palm Beach County Wells		DESIGNATION	PB 620 2005	
SECTION	28		TOWNSHIP	42 SOUTH		RANGE	43 EAST	
GEOGRAPHIC INDEX OF QUAD								
Established by <u>Nick Miller Inc.</u> Recovered by				NAME OF QUADRANGLE Riviera Beach				
SURVEYOR <u>Stephen M. Gordon</u> DATE <u>7/28/2005</u>				FIELD BOOK <u>4</u> PAGE <u>70</u>				
HORIZONTAL DATUM: 1927 <input checked="" type="radio"/> 1983 Other _____ (circle one) ZONE <input checked="" type="radio"/> E or W								
STATE PLANE COORDINATES			E 961,219 ft			N 894,870 ft		
LATITUDE: N 26.79251°			LONGITUDE: W 80.06490°					
VERTICAL DATUM: MSL 1929 <input checked="" type="radio"/> 1988 Other _____ (circle one)						EL. 10.73 ft		
VERTICAL DATUM: MSL <input checked="" type="radio"/> 1929 1988 Other _____ (circle one)						EL. 12.24 ft		
CONTROL ACCURACY: HORIZONTAL 1 2 3 <input checked="" type="radio"/> SUB-METER (circle one) VERTICAL 1 2 <input checked="" type="radio"/> 3								
DESCRIPTION								
To Reach:								
FROM INTERSECTION OLD DIXIE HWY AND SILVER BEACH ROAD FOR 0.4 MILE TO 6 TH STREET. GO NORTH ON 6 TH STREET FOR +/- 100 FEET AND CONCRETE MONUMENT WILL BE ON THE RIGHT. 16.4 FEET WEST OF CENTERLINE 6 TH STREET, 4.8 FEET EAST OF FACE OF SIDEWALK, 16.35 FEET NORTH OF FIRE HYDRANT, 26.95 FEET SOUTH OF PALM BEACH COUNTY SIGN SET MAGNET 1 FOOT NORTH CONCRETE MONUMENT.								
Benchmarks Used: T 402 and U 402								
Notable Land marks:								



SOUTH FLORIDA WATER MANAGEMENT DISTRICT

Rev. 4/01

SKETCH

1078 SFWM/D

SET CONC. MONUMENT AT
SITE OF MONITORING WELL PB 620

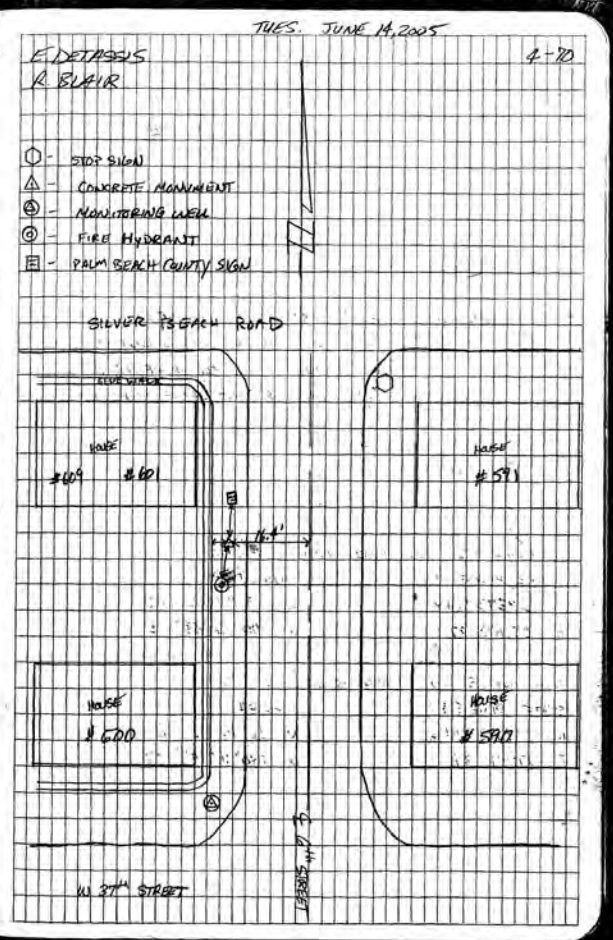
PB 620

- SET Poured - IN - PLACE CONCRETE MONUMENT
- SET MAGNET 1' NORTH OF CONC. MON.
- SET CONC. MON. 16.9' WEST OF Q 6th STREET
- " " " 9.8' EAST OF FACE OF SIDEWALK
- " " " 16.35' NORTH OF FIRE HYDRANT
- " " " 26.93' SOUTH OF PALM BEACH COUNTY SIGN

STAMPED PB 620
2005

COORDINATES ON CONC. MON. PB 620
STATE PLANE 83 WGS 84
N. 272757.020 m N. 26°47'33" 032
E. 292780.184 m W. 080°03'53" 134

COORDINATES ON MONITORING WELL PB 620
STATE PLANE 83 WGS 84
N. 272712.184 m N. 26°47'31" 576
E. 292776.354 m W. 080°03'53" 983



-*- FIELD ABSTRACT -*-

050621-050706 HGZ L26803 8.8 MM ORDER 2 CLASS 2 PAGE 1
SOUTH FLORIDA WATER MANAGEMENT DISTRICT
PALM BEACH COUNTY MONITORING WELLS
ESTABLISH BENCH MARK NEAR MONITORING WELL PB 620

Table with columns: FROM TO, START, F/B, DIST TOTAL (KM), ELEV DIFF (MT), -(F+B) TOTAL (MM), MEAN DIFF FLD ELEV (MT), I C. Contains data for various well sections and their elevations.

ELEVATION REJECTION AND ERROR CODES

- C - section elevation difference was rejected for cause i.e. *43* record rejection code set to "F"
R - section elevation difference was rejected by Halperin rejection algorithm
@ - section elevation difference does not include refraction correction
* - section elevation difference does not include rod correction

Table with columns: INSTRUMENT CODE, INSTRUMENT, RODS. Lists instrument codes 1, 2, 3 and their corresponding instrument and rod values.

LEVEL LINE SECTION RUNNING TREE

Table with columns: FROM TO, N. LATITUDE, W. LONGITUDE, FIELD DISTANCE, VS. COMPUTED. Shows level line section data for wells 0239, 0241, 0240, 0251, 0250.

SECTION FROM TO ERROR MESSAGES

The NGS Data Sheet

See file [dsdata.txt](#) for more information about the datasheet.

DATABASE = Sybase ,PROGRAM = datasheet, VERSION = 7.23

1 National Geodetic Survey, Retrieval Date = SEPTEMBER 1, 2005

AD8027 *****

AD8027 DESIGNATION - T 402

AD8027 PID - AD8027

AD8027 STATE/COUNTY- FL/PALM BEACH

AD8027 USGS QUAD - RIVIERA BEACH (1983)

AD8027

AD8027 *CURRENT SURVEY CONTROL

AD8027

AD8027* NAD 83(1999)- 26 46 56.25483(N) 080 03 59.28512(W) ADJUSTED

AD8027* NAVD 88 - 4.961 (meters) 16.28 (feet) ADJUSTED

AD8027

AD8027 X - 982,898.489 (meters) COMP

AD8027 Y - -5,612,359.321 (meters) COMP

AD8027 Z - 2,856,691.869 (meters) COMP

AD8027 LAPLACE CORR- -4.37 (seconds) DEFLEC99

AD8027 ELLIP HEIGHT- -21.75 (meters) (12/12/02) GPS OBS

AD8027 GEOID HEIGHT- -26.71 (meters) GEOID03

AD8027 DYNAMIC HT - 4.954 (meters) 16.25 (feet) COMP

AD8027 MODELED GRAV- 979,114.2 (mgal) NAVD 88

AD8027

AD8027 HORZ ORDER - FIRST

AD8027 VERT ORDER - FIRST CLASS II

AD8027 ELLP ORDER - THIRD CLASS I

AD8027

AD8027.The horizontal coordinates were established by GPS observations

AD8027.and adjusted by the National Geodetic Survey in December 2002.

AD8027

AD8027.The orthometric height was determined by differential leveling

AD8027.and adjusted by the National Geodetic Survey in May 2002.

AD8027.WARNING-Repeat measurements at this control monument indicate possible

AD8027.vertical movement.

AD8027

AD8027.The X, Y, and Z were computed from the position and the ellipsoidal ht.

AD8027

AD8027.The Laplace correction was computed from DEFLEC99 derived deflections.

AD8027

AD8027.The ellipsoidal height was determined by GPS observations

AD8027.and is referenced to NAD 83.

AD8027

AD8027.The geoid height was determined by GEOID03.

AD8027

AD8027.The dynamic height is computed by dividing the NAVD 88

AD8027.geopotential number by the normal gravity value computed on the

AD8027.Geodetic Reference System of 1980 (GRS 80) ellipsoid at 45

AD8027.degrees latitude (g = 980.6199 gals.).

AD8027

AD8027.The modeled gravity was interpolated from observed gravity values.

AD8027

AD8027;

	North	East	Units	Scale	Factor	Converg.
AD8027;SPC FL E -	271,623.937	292,832.370	MT	1.00004753	+0 25	14.5
AD8027;UTM 17 -	2,962,663.242	592,800.695	MT	0.99970632	+0 25	14.5

AD8027

AD8027! - Elev Factor x Scale Factor = Combined Factor

AD8027!SPC FL E - 1.00000342 x 1.00004753 = 1.00005095

AD8027!UTM 17 - 1.00000342 x 0.99970632 = 0.99970974

AD8027

AD8027 SUPERSEDED SURVEY CONTROL

AD8027

AD8027 NAVD 88 (05/20/94) 4.978 (m) 16.33 (f) UNKNOWN 1 2

AD8027 NGVD 29 (09/01/92) 5.441 (m) 17.85 (f) ADJUSTED 1 2

AD8027

AD8027.Superseded values are not recommended for survey control.

AD8027.NGS no longer adjusts projects to the NAD 27 or NGVD 29 datums.

AD8027.[See file dsdata.txt](#) to determine how the superseded data were derived.

AD8027

AD8027_U.S. NATIONAL GRID SPATIAL ADDRESS: 17RNK9280162663(NAD 83)

AD8027_MARKER: I = METAL ROD

DATASHEETS

AD8027_SETTING: 49 = STAINLESS STEEL ROD W/O SLEEVE (10 FT.+)
 AD8027_SP_SET: STAINLESS STEEL ROD
 AD8027_STAMPING: T 402 1991
 AD8027_MARK LOGO: NGS
 AD8027_PROJECTION: FLUSH
 AD8027_MAGNETIC: I = MARKER IS A STEEL ROD
 AD8027_STABILITY: B = PROBABLY HOLD POSITION/ELEVATION WELL
 AD8027_SATELLITE: THE SITE LOCATION WAS REPORTED AS SUITABLE FOR
 AD8027+SATELLITE: SATELLITE OBSERVATIONS - April 29, 2005
 AD8027_ROD/PIPE-DEPTH: 3.6 meters

AD8027	HISTORY	- Date	Condition	Report By
AD8027	HISTORY	- 1991	MONUMENTED	NGS
AD8027	HISTORY	- 20010413	GOOD	GCIYI
AD8027	HISTORY	- 20020415	GOOD	USPSQD
AD8027	HISTORY	- 20020420	GOOD	MAPTEC
AD8027	HISTORY	- 20030421	GOOD	USPSQD
AD8027	HISTORY	- 20040426	GOOD	USPSQD
AD8027	HISTORY	- 20050429	GOOD	USPSQD

AD8027
 AD8027 STATION DESCRIPTION

AD8027'DESCRIBED BY NATIONAL GEODETIC SURVEY 1991
 AD8027'IN RIVIERA BEACH, AT THE INTERSECTION OF THE FLORIDA EAST COAST
 AD8027'RAILROAD AND BLUE HERON BOULEVARD, 12.1 M (39.7 FT) SOUTHEAST OF AND
 AD8027'LEVEL WITH THE BOULEVARD CENTERLINE, 4.4 M (14.4 FT) NORTHEAST OF THE
 AD8027'NEAR RAIL, 0.4 M (1.3 FT) NORTH OF A RIGHT-OF-WAY POST, AND 0.4 M
 AD8027'(1.3 FT) WEST OF A WITNESS POST. NOTE--ACCESS TO THE DATUM POINT IS
 AD8027'THROUGH A 5-INCH LOGO CAP.

AD8027
 AD8027 STATION RECOVERY (2001)

AD8027'RECOVERY NOTE BY G.C.Y., INCORPORATED 2001 (PA)
 AD8027'RECOVERED IN GOOD CONDITION.

AD8027
 AD8027 STATION RECOVERY (2002)

AD8027'RECOVERY NOTE BY US POWER SQUADRON 2002 (AAS)
 AD8027'RECOVERED IN GOOD CONDITION.

AD8027
 AD8027 STATION RECOVERY (2002)

AD8027'RECOVERY NOTE BY MAPTECH INCORPORATED 2002 (CDP)
 AD8027'STATION RECOVERY (2002)
 AD8027'RECOVERY NOTE BY MAPTECH, INCORPORATED 2002 (CDP) .
 AD8027'RECOVERED AS DESCRIBED.

AD8027'
 AD8027'
 AD8027'
 AD8027 STATION RECOVERY (2003)

AD8027'RECOVERY NOTE BY US POWER SQUADRON 2003 (AAS)
 AD8027'RECOVERED IN GOOD CONDITION.

AD8027
 AD8027 STATION RECOVERY (2004)

AD8027'RECOVERY NOTE BY US POWER SQUADRON 2004 (AAS)
 AD8027'RECOVERED IN GOOD CONDITION.

AD8027
 AD8027 STATION RECOVERY (2005)

AD8027'RECOVERY NOTE BY US POWER SQUADRON 2005 (AAS)
 AD8027'RECOVERED IN GOOD CONDITION.

*** retrieval complete.
 Elapsed Time = 00:00:06

The NGS Data Sheet

See file [dsdata.txt](#) for more information about the datasheet.

DATABASE = Sybase ,PROGRAM = datasheet, VERSION = 7.27

1 National Geodetic Survey, Retrieval Date = SEPTEMBER 13, 2005

AD8026 *****

AD8026 DESIGNATION - U 402

AD8026 PID - AD8026

AD8026 STATE/COUNTY- FL/PALM BEACH

AD8026 USGS QUAD - RIVIERA BEACH (1983)

AD8026

AD8026 *CURRENT SURVEY CONTROL

AD8026

AD8026* NAD 83(1999)- 26 47 34.72623(N) 080 04 15.32211(W) ADJUSTED

AD8026* NAVD 88 - 6.320 (meters) 20.73 (feet) ADJUSTED

AD8026

AD8026 X - 982,370.316 (meters) COMP

AD8026 Y - -5,611,911.238 (meters) COMP

AD8026 Z - 2,857,749.457 (meters) COMP

AD8026 LAPLACE CORR- -4.27 (seconds) DEFLEC99

AD8026 ELLIP HEIGHT- -20.43 (meters) (12/12/02) GPS OBS

AD8026 GEOID HEIGHT- -26.74 (meters) GEOID03

AD8026 DYNAMIC HT - 6.311 (meters) 20.71 (feet) COMP

AD8026 MODELED GRAV- 979,112.8 (mgal) NAVD 88

AD8026

AD8026 HORZ ORDER - FIRST

AD8026 VERT ORDER - FIRST CLASS II

AD8026 ELLP ORDER - THIRD CLASS I

AD8026

AD8026.The horizontal coordinates were established by GPS observations

AD8026.and adjusted by the National Geodetic Survey in December 2002.

AD8026

AD8026.The orthometric height was determined by differential leveling

AD8026.and adjusted by the National Geodetic Survey in May 1994.

AD8026

AD8026.The X, Y, and Z were computed from the position and the ellipsoidal ht.

AD8026

AD8026.The Laplace correction was computed from DEFLEC99 derived deflections.

AD8026

AD8026.The ellipsoidal height was determined by GPS observations

AD8026.and is referenced to NAD 83.

AD8026

AD8026.The geoid height was determined by GEOID03.

AD8026

AD8026.The dynamic height is computed by dividing the NAVD 88

AD8026.geopotential number by the normal gravity value computed on the

AD8026.Geodetic Reference System of 1980 (GRS 80) ellipsoid at 45

AD8026.degrees latitude (g = 980.6199 gals.).

AD8026

AD8026.The modeled gravity was interpolated from observed gravity values.

AD8026

AD8026;

	North	East	Units	Scale	Factor	Converg.
AD8026;SPC FL E	- 272,804.782	292,380.705	MT	1.00004650	+0 25 07.8	
AD8026;UTM 17	- 2,963,843.684	592,349.186	MT	0.99970528	+0 25 07.8	

AD8026

AD8026!

	Elev Factor	x	Scale Factor	=	Combined Factor
AD8026!SPC FL E	- 1.00000321	x	1.00004650	=	1.00004971
AD8026!UTM 17	- 1.00000321	x	0.99970528	=	0.99970849

AD8026

AD8026

AD8026

AD8026

AD8026

AD8026

AD8026

AD8026

AD8026

AD8026

AD8026

AD8026

AD8026

AD8026

AD8026

AD8026

AD8026

AD8026

AD8026

AD8026

AD8026

AD8026

AD8026

DATASHEETS

AD8026_STAMPING: U 402 1991
 AD8026_MARK LOGO: NGS
 AD8026_PROJECTION: FLUSH
 AD8026_MAGNETIC: I = MARKER IS A STEEL ROD
 AD8026_STABILITY: B = PROBABLY HOLD POSITION/ELEVATION WELL
 AD8026_SATELLITE: THE SITE LOCATION WAS REPORTED AS SUITABLE FOR
 AD8026+SATELLITE: SATELLITE OBSERVATIONS - April 29, 2005
 AD8026_ROD/PIPE-DEPTH: 17.6 meters

AD8026	HISTORY	- Date	Condition	Report By
AD8026	HISTORY	- 1991	MONUMENTED	NGS
AD8026	HISTORY	- 20010413	GOOD	GCYI
AD8026	HISTORY	- 20011101	GOOD	MOREKL
AD8026	HISTORY	- 20020415	GOOD	USPSQD
AD8026	HISTORY	- 20020420	GOOD	MAPTEC
AD8026	HISTORY	- 20030421	GOOD	USPSQD
AD8026	HISTORY	- 20040426	GOOD	USPSQD
AD8026	HISTORY	- 20050429	GOOD	USPSQD

AD8026
 AD8026 STATION DESCRIPTION

AD8026 DESCRIBED BY NATIONAL GEODETIC SURVEY 1991
 AD8026 IN RIVIERA BEACH, AT THE INTERSECTION OF THE FLORIDA EAST COAST
 AD8026 RAILROAD AND SILVER BEACH ROAD, 10.0 M (32.8 FT) SOUTHEAST OF AND
 AD8026 LEVEL WITH THE ROAD CENTERLINE, 8.1 M (26.6 FT) NORTHEAST OF THE NEAR
 AD8026 RAIL, 1.1 M (3.6 FT) EAST OF A RIGHT-OF-WAY POST, 0.4 M (1.3 FT) WEST
 AD8026 OF A RIGHT-OF-WAY POST, AND 0.3 M (1.0 FT) NORTH OF A WITNESS POST.
 AD8026 NOTE--ACCESS TO THE DATUM POINT IS THROUGH A 5-INCH LOGO CAP.

AD8026 STATION RECOVERY (2001)

AD8026 RECOVERY NOTE BY G.C.Y., INCORPORATED 2001 (PA)
 AD8026 RECOVERED IN GOOD CONDITION.

AD8026 STATION RECOVERY (2001)

AD8026 RECOVERY NOTE BY MORGAN AND EKLUND INC 2001 (MAB)
 AD8026 RECOVERED AS DESCRIBED

AD8026 STATION RECOVERY (2002)

AD8026 RECOVERY NOTE BY US POWER SQUADRON 2002 (AAS)
 AD8026 UNDER 6 INCHES OF BALLAST AND WITNESS POST BROKEN OFF

AD8026 STATION RECOVERY (2002)

AD8026 RECOVERY NOTE BY MAPTECH INCORPORATED 2002 (CDP)
 AD8026 RECOVERED AS DESCRIBED

AD8026 STATION RECOVERY (2002)

AD8026 RECOVERY NOTE BY MAPTECH, INCORPORATED 2002 (CDP)
 AD8026 RECOVERED AS DESCRIBED.

AD8026 STATION RECOVERY (2003)

AD8026 RECOVERY NOTE BY US POWER SQUADRON 2003 (AAS)
 AD8026 NEW WITNESS POST INSTALLED

AD8026 STATION RECOVERY (2004)

AD8026 RECOVERY NOTE BY US POWER SQUADRON 2004 (AAS)
 AD8026 RECOVERED IN GOOD CONDITION.

AD8026 STATION RECOVERY (2005)

AD8026 RECOVERY NOTE BY US POWER SQUADRON 2005 (AAS)
 AD8026 RECOVERED IN GOOD CONDITION.

AD8026 STATION RECOVERY (2005)

AD8026 RECOVERY NOTE BY US POWER SQUADRON 2005 (AAS)
 AD8026 RECOVERED IN GOOD CONDITION.

*** retrieval complete.

Elapsed Time = 00:00:00

The NGS Data Sheet

See file [dsdata.txt](#) for more information about the datasheet.

DATABASE = Sybase ,PROGRAM = datasheet, VERSION = 7.27

1 National Geodetic Survey, Retrieval Date = SEPTEMBER 14, 2005

AD2910 *****

AD2910 DESIGNATION - Y 309

AD2910 PID - AD2910

AD2910 STATE/COUNTY- FL/PALM BEACH

AD2910 USGS QUAD - RIVIERA BEACH (1983)

AD2910

AD2910 *CURRENT SURVEY CONTROL

AD2910

AD2910*	NAID 83(1986)-	26 47 01.	(N)	080 03 48.	(W)	SCALED
AD2910*	NAVD 88	-	3.587	(meters)	11.77	(feet) ADJUSTED

AD2910

AD2910 GEOID HEIGHT- -26.73 (meters) GEOID03

AD2910 DYNAMIC HT - 3.581 (meters) 11.75 (feet) COMP

AD2910 MODELED GRAV- 979,113.7 (mgal) NAVD 88

AD2910

AD2910 VERT ORDER - SECOND CLASS 0

AD2910

AD2910.The horizontal coordinates were scaled from a topographic map and have
AD2910.an estimated accuracy of +/- 6 seconds.

AD2910

AD2910.The orthometric height was determined by differential leveling
AD2910.and adjusted by the National Geodetic Survey in June 1991.

AD2910

AD2910.The geoid height was determined by GEOID03.

AD2910

AD2910.The dynamic height is computed by dividing the NAVD 88
AD2910.geopotential number by the normal gravity value computed on the
AD2910.Geodetic Reference System of 1980 (GRS 80) ellipsoid at 45
AD2910.degrees latitude (g = 980.6199 gals.).

AD2910

AD2910.The modeled gravity was interpolated from observed gravity values.

AD2910

AD2910;	North	East	Units	Estimated Accuracy
AD2910;SPC FL E	- 271,770.	293,140.	MT	(+/- 180 meters Scaled)

AD2910

AD2910 SUPERSEDED SURVEY CONTROL

AD2910

AD2910	NGVD 29 (??/??/92)	4.049 (m)	13.28 (f)	ADJ UNCH	2 0
--------	--------------------	-----------	-----------	----------	-----

AD2910

AD2910.Superseded values are not recommended for survey control.

AD2910.NGS no longer adjusts projects to the NAD 27 or NGVD 29 datums.

AD2910.[See file dsdata.txt](#) to determine how the superseded data were derived.

AD2910

AD2910_U.S. NATIONAL GRID SPATIAL ADDRESS: 17RNK931628(NAD 83)

AD2910_MARKER: DB = BENCH MARK DISK

AD2910_SETTING: 30 = SET IN A LIGHT STRUCTURE

AD2910_SP_SET: CULVERT

AD2910_STAMPING: Y 309 1970

AD2910_STABILITY: D = MARK OF QUESTIONABLE OR UNKNOWN STABILITY

AD2910_SATELLITE: THE SITE LOCATION WAS REPORTED AS SUITABLE FOR

AD2910+SATELLITE: SATELLITE OBSERVATIONS - April 27, 2005

AD2910

AD2910	HISTORY	- Date	Condition	Report By
AD2910	HISTORY	- 1970	MONUMENTED	NGS
AD2910	HISTORY	- 1973	GOOD	NGS
AD2910	HISTORY	- 1984	MARK NOT FOUND	USPSQD
AD2910	HISTORY	- 1987	GOOD	USPSQD
AD2910	HISTORY	- 19880227	GOOD	USPSQD
AD2910	HISTORY	- 20010331	GOOD	NGS
AD2910	HISTORY	- 20020415	GOOD	USPSQD
AD2910	HISTORY	- 20030415	GOOD	USPSQD
AD2910	HISTORY	- 20040426	GOOD	USPSQD
AD2910	HISTORY	- 20050427	GOOD	USPSQD

AD2910

AD2910

AD2910

AD2910

AD2910

AD2910

AD2910

AD2910

AD2910

AD2910

AD2910

AD2910

AD2910 STATION DESCRIPTION

AD2910

AD2910

AD2910

AD2910

AD2910

AD2910

AD2910

AD2910

AD2910'DESCRIBED BY NATIONAL GEODETIC SURVEY 1970

DATASHEETS

AD2910 'AT RIVIERA BEACH.
AD2910 'AT RIVIERA BEACH, ABOUT 0.5 MILE WEST ALONG BLUE HERON BLVD
AD2910 'FROM THE JUNCTION OF U.S. HIGHWAY 1 AND STATE HIGHWAY A 1 A,
AD2910 'ABOUT 0.25 MILE EAST OF THE CROSSING OF THE FLORIDA EAST COAST
AD2910 'RAILWAY, SET ON THE TOP OF THE WEST END OF THE SOUTH CONCRETE
AD2910 'HEAD WALL FOR A LARGE PIPE CULVERT UNDER THE BLVD, 11.2 FEET
AD2910 'SOUTH OF THE SOUTH CURB LINE OF THE BLVD AND 1 FOOT ABOVE THE
AD2910 'LEVEL OF THE BLVD.

AD2910
AD2910 STATION RECOVERY (1973)

AD2910
AD2910 RECOVERY NOTE BY NATIONAL GEODETIC SURVEY 1973
AD2910 RECOVERED IN GOOD CONDITION.

AD2910
AD2910 STATION RECOVERY (1984)

AD2910
AD2910 RECOVERY NOTE BY US POWER SQUADRON 1984
AD2910 MARK NOT FOUND.

AD2910
AD2910 STATION RECOVERY (1987)

AD2910
AD2910 RECOVERY NOTE BY US POWER SQUADRON 1987 (UNK)
AD2910 RECOVERED IN GOOD CONDITION.

AD2910
AD2910 STATION RECOVERY (1988)

AD2910
AD2910 RECOVERY NOTE BY US POWER SQUADRON 1988 (REK)
AD2910 RECOVERED IN GOOD CONDITION.

AD2910
AD2910 STATION RECOVERY (2001)

AD2910
AD2910 RECOVERY NOTE BY NATIONAL GEODETIC SURVEY 2001 (DB)
AD2910 THIS REPORT WAS SUBMITTED BY THE US POWER SQUADRONS.

AD2910
AD2910 STATION RECOVERY (2002)

AD2910
AD2910 RECOVERY NOTE BY US POWER SQUADRON 2002 (AAS)
AD2910 RECOVERED IN GOOD CONDITION.

AD2910
AD2910 STATION RECOVERY (2003)

AD2910
AD2910 RECOVERY NOTE BY US POWER SQUADRON 2003 (AAS)
AD2910 RECOVERED IN GOOD CONDITION.

AD2910
AD2910 STATION RECOVERY (2004)

AD2910
AD2910 RECOVERY NOTE BY US POWER SQUADRON 2004 (AAS)
AD2910 RECOVERED IN GOOD CONDITION.

AD2910
AD2910 STATION RECOVERY (2005)

AD2910
AD2910 RECOVERY NOTE BY US POWER SQUADRON 2005 (AAS)
AD2910 RECOVERED IN GOOD CONDITION.

*** retrieval complete.
Elapsed Time = 00:00:00

PB-632



Nick Miller, Inc.

Date of Photo: June 14, 2005

View: Looking at the well PB-632 & PB-633 facing south

PB-632



Nick Miller, Inc.
Date of Photo: June 14, 2005
View: Close-up of the well PB-632 showing the contractor's markings

PB-632



Nick Miller, Inc.
Date of Photo: June 14, 2005
View: Close-up of the well PB-633 showing the contractor's markings

PB-632



Nick Miller, Inc.
Date of Photo: June 14, 2005
View: Looking at the benchmark facing south

PB-632



Nick Miller, Inc.
Date of Photo: June 14, 2005
View: A top view of the benchmark

1078

SFWMD

SET CONC. MONUMENT AT
THE SITE OF MONITORING WELLS
PB 632/633

PB 632/633

- SET POURED-IN-PLACE CONCRETE MONUMENT
- SET MAGNET 1' NORTH OF CONC. MON.
- SET CONC. MON. 7.5' WEST OF CHAINLINK FENCE
- " " " 3.25' EAST OF BACK OF CURB
- " " " 22.35' SOUTH OF LIGHT POLE (WOODEN)
- " " " 96.15' NE OF STOP SIGN

STAMPED PB 632/633
2005

COORDINATES ON CONC. MON. PB 632/633

STATE PLANE 83

WGS 84

N. 271369.580 m

N. $26^{\circ}46'47''.683$

E. 294114.034 m

W. $080^{\circ}03'12''.960$

COORDINATES ON MONITORING WELL PB 632/633

STATE PLANE 83

WGS 84

N. 271369.535 m

N. $26^{\circ}46'47''.684$

E. 294102.601 m

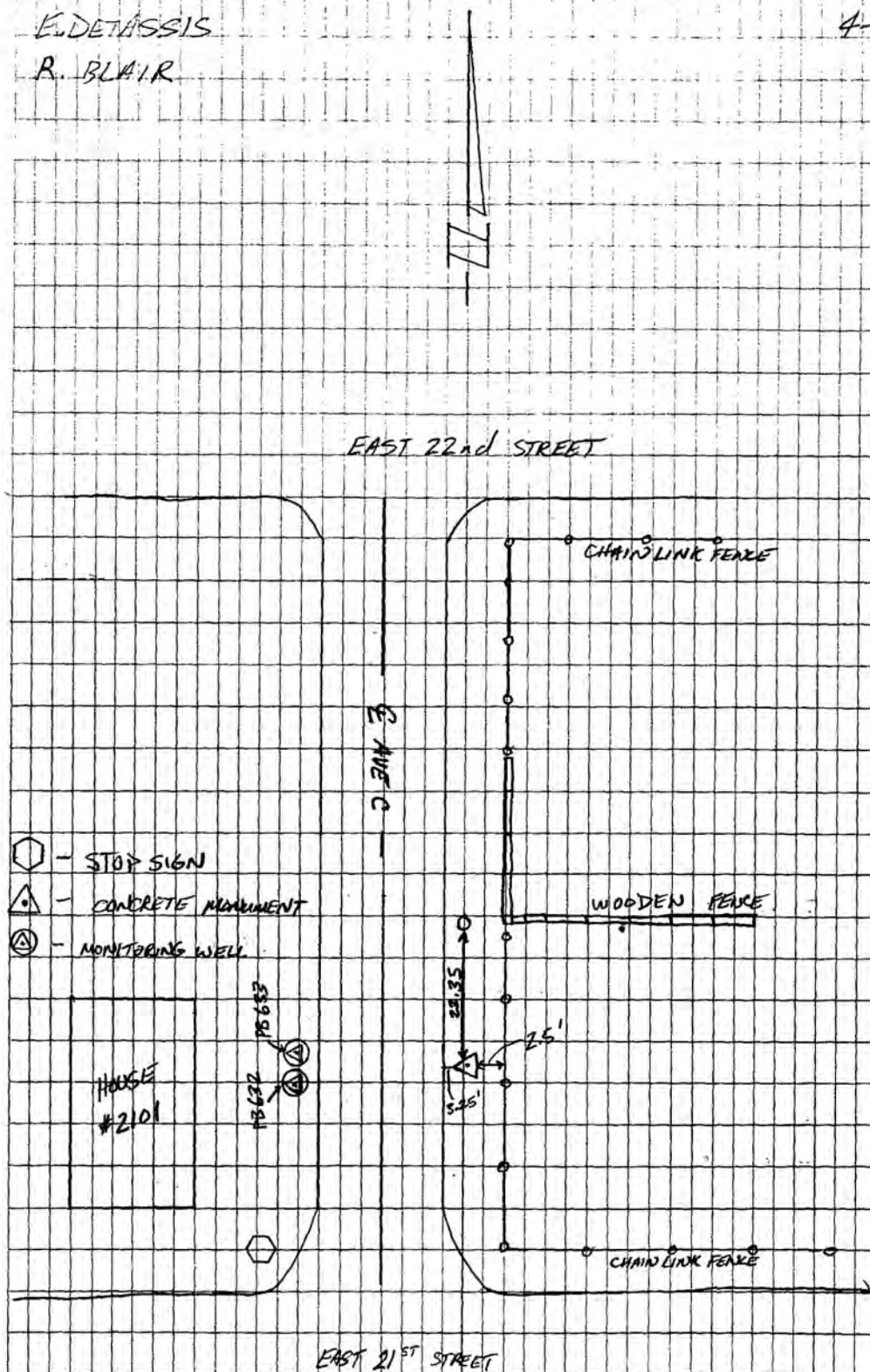
W. $080^{\circ}03'13''.373$

TUES FRI JUNE 14 2005

E. DETASSIS

4-69

R. BLAIR





SOUTH FLORIDA WATER MANAGEMENT DISTRICT

Rev. 4/01

COUNTY	PALM BEACH		PROJECT	Hydrology – Palm Beach County Wells		DESIGNATION	PB 632 2005	
SECTION	28		TOWNSHIP	42 SOUTH		RANGE	43 EAST	
GEOGRAPHIC INDEX OF QUAD								
Established by <u>Nick Miller Inc.</u> Recovered by				NAME OF QUADRANGLE Riviera Beach				
SURVEYOR <u>Stephen M. Gordon</u> DATE <u>7/28/2005</u>				FIELD BOOK <u>4</u> PAGE <u>69</u>				
HORIZONTAL DATUM: 1927 <input checked="" type="radio"/> 1983 Other _____ (circle one) ZONE <input checked="" type="radio"/> E or W								
STATE PLANE COORDINATES			E 964,939 ft			N 890,318 ft		
LATITUDE: N 26.77991°			LONGITUDE: W 80.05360°					
VERTICAL DATUM: MSL 1929 <input checked="" type="radio"/> 1988 Other _____ (circle one)						EL. 8.34ft		
VERTICAL DATUM: MSL <input checked="" type="radio"/> 1929 1988 Other _____ (circle one)						EL. 9.86 ft		
CONTROL ACCURACY: HORIZONTAL 1 2 3 <input checked="" type="radio"/> SUB-METER (circle one) VERTICAL 1 2 <input checked="" type="radio"/> 3								
DESCRIPTION								
<p>To Reach:</p> <p>FROM INTERSECTION BLUE HERON BLVD & FEDERAL HWY (US1). GO SOUTH ON FEDERAL HWY/US 1 FOR 0.2 MILE TO EAST 22ND STREET. GO EAST ON EAST 22ND STREET FOR 0.1 MILE TO AVENUE C. GO SOUTH ON AVENUE C FOR +/-125 FEET TO CONCRETE MONUMENT ON LEFT. 2.5 FEET WEST OF CHAIN LINK FENCE, 3.25 FEET EAST OF BACK OF CURB, 22.35 FEET SOUTH OF WOODEN LIGHT POLE, 96.15 FEET NORTHEAST OF STOP SIGN. SET MAGNET 1 FOOT NORTH OF CONCRETE MONUMENT.</p> <p>Benchmarks Used: T 402 and Y 309</p> <p>Notable Land marks:</p>								



SOUTH FLORIDA WATER MANAGEMENT DISTRICT

Rev. 4/01

SKETCH

1078

SFWMD

SET CONC. MONUMENT AT
THE SITE OF MONITORING WELLS
PB 632/633

PB 632/633

- SET FOURED-IN-PLACE CONCRETE MONUMENT
- SET MAGNET 1' NORTH OF CONC. MON.
- SET CONC. MON. 7.5' WEST OF CHAINLINK FENCE
- " " " 3.25' EAST OF BACK OF CURB
- " " " 22.35' SOUTH OF LIGHT POLE (WOODEN)
- " " " 96.15' NE OF STOP SIGN

STAMPED PB 632/633
2005

COORDINATES ON CONC. MON. PB 632/633
STATE PLANE 83 WGS 84
N. 271369.580 m N. 26°46'47".683
E. 294114.039 m W. 080°03'12".940

COORDINATES ON MONITORING WELL PB 632/633
STATE PLANE 82 WGS 84
N. 271369.535 m N. 26°46'47".689
E. 294102.601 m W. 080°03'13".373

TUES. FEB. JUNE 14, 2005

E. DETASSIS
R. BLAIR

4-69

