



Elevation 11.034 (3.36317m) NAVD88  
taken from the level line adjustment sheet

<b>PB 690</b>		Elevation:	<b>11.034</b> <del>5.02</del> ft	(NAVD 88)	<del>12.574</del> <del>6.56</del> ft	(NGVD 29)
Bench Mark 1:	Z 233		16.02 ft	(NAVD 88)	17.57 ft	(NGVD 29)
Bench Mark 2:	14.33		12.78 ft	(NAVD 88)	14.33 ft	(NGVD 29)
Bench Mark 3:	DELRAY SOUTH BASE RM 6		16.04 ft	(NAVD 88)	17.58 ft	(NGVD 29)
Bench Mark 4:	B 234		18.27 ft	(NAVD 88)	19.81 ft	(NGVD 29)
Monitoring Well:	PB 690		<b>10.674</b> <del>4.66</del> ft	(NAVD 88)	<del>12.214</del> <del>6.20</del> ft	(NGVD 29)
Length of Run:	6.22 km	To Reach PB 690:				
Max Allowable Misclosure:	20 mm	FROM INTERSECTION ATLANTIC AVENUE & SE 5 <sup>TH</sup> AVENUE (FEDERAL HWY). GO SOUTH ON SE 5 <sup>TH</sup> AVENUE FOR 0.5 MILES TO SE 5 <sup>TH</sup> STREET. GO WEST ON SE 5 <sup>TH</sup> STREET FOR +/- 125'. CONCRETE MONUMENT WILL BE ON LEFT 7.2' WEST OF MONITORING WELL PB 690. 6.45' EAST OF PK NAIL & DISK LB 4813 IN SOUTH SIDE OF OAK TREE. 11.0' NORTH OF SE 5 <sup>TH</sup> STREET. 11.0' SOUTH OF CENTERLINE SW 5 <sup>TH</sup> STREET. MAGNET SET 1' NORTH OF CONCRETE MONUMENT.				
Actual Misclosure:	7 mm					
						

<b>PB 693</b>		Elevation:	<b>5.54</b> ft	(NAVD 88)	7.07 ft	(NGVD 29)
Bench Mark 1:	K 402		15.68 ft	(NAVD 88)	17.22 ft	(NGVD 29)
Bench Mark 2:	P 233		14.98 ft	(NAVD 88)	16.50 ft	(NGVD 29)
Bench Mark 3:	J 402		7.00 ft	(NAVD 88)	8.54 ft	(NGVD 29)
Monitoring Well:	PB 693		5.75 ft	(NAVD 88)	7.28 ft	(NGVD 29)
Length of Run:	4.35 km	To Reach PB 693:				
Max Allowable Misclosure:	16 mm	INTERSECTION OF 6 <sup>TH</sup> AVE. & US HWY 1. GO EAST ON 6 <sup>TH</sup> AVE. FOR 0.40 MILE TO SOUTH PALMWAY. GO SOUTH ON SOUTH PALMWAY FOR 0.8 MILE. CONCRETE MONUMENT WILL BE ON LEFT. 7.0 FEET EAST OF MONITORING WELL PB 693. 38.0 FEET NORTHEAST OF SPEED LIMIT SIGN. 17.8 FEET WEST OF CENTERLINE NORTH PALMWAY. 16.65 FEET SOUTH OF PALM TREE. MAGNET 1 FOOT SOUTH OF CONCRETE MONUMENT.				
Actual Misclosure:	16 mm					
						

**PB-690**



**Nick Miller, Inc.**

**Date of Photo: May 9, 2005**

**View: Looking at the well PB-690 facing west**



# PB-690



**Nick Miller, Inc.**  
**Date of Photo: May 9, 2005**  
**View: Close-up of the well PB-690 showing the contractor's markings**



**PB-690**



**Nick Miller, Inc.**  
**Date of Photo: May 9, 2005**  
**View: Looking at the benchmark facing east**

**PB-690**



**Nick Miller, Inc.**  
**Date of Photo: May 9, 2005**  
**View: A top view of the benchmark**



1078

SFUMD

SET CON. MONUMENT  
AT WELL SITE PB-690

PB-690

SET POURED-IN-PLACE CONC. MONUMENT  
SET MAGNET 1' NORTH OF CONC. MONUMENT

- SET CONC. MON. 7.2' WEST OF PB 690 MONITORING WELL
- " " " 6.45' EAST OF PK NAIL & DISK IN OAK TREE (SOUTH SIDE)
- " " " 11.0' NORTH OF E SE 5<sup>TH</sup> STREET
- " " " 11.0' SOUTH OF E SW 5<sup>TH</sup> STREET

STAMPED PB 690  
2005

COORDINATES ON MONITORING WELL PB 690

STATE PLANE 83

WGS 84

N. 235185.794 m

N.  $26^{\circ} 27' 12.39333''$ 

E. 292883.878 m

E. W.  $080^{\circ} 04' 07.02789''$ 

COORDINATES ON CONC. MONUMENT

STATE PLANE 83

WGS 84

N. 235184.624 m

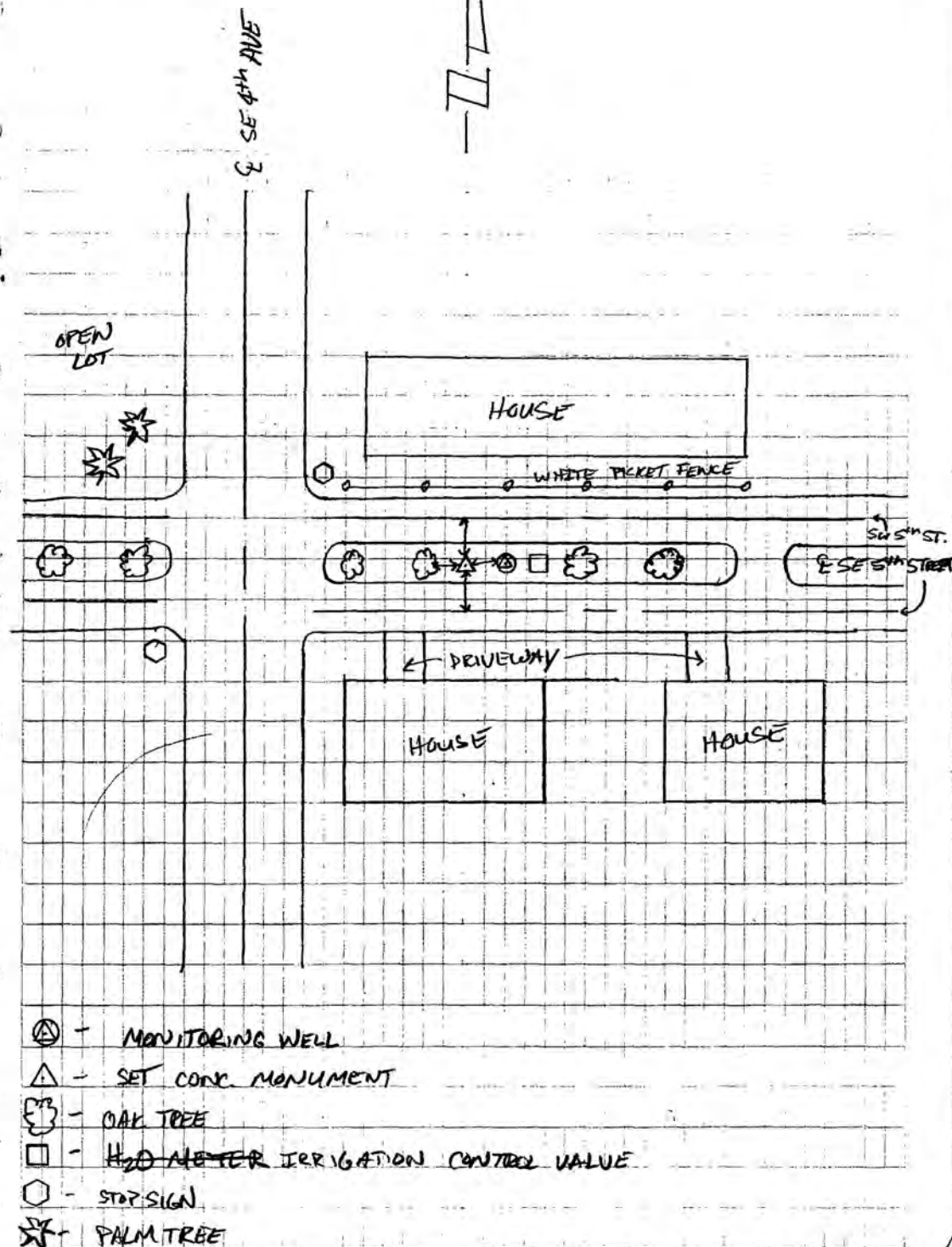
N.  $26^{\circ} 27' 12.35566''$ 

E. 292882.563 m

W.  $080^{\circ} 04' 07.07565''$ 

MON. MAY 9, 2005

4-50

E. DETASSIS  
G. RABER III



SOUTH FLORIDA WATER MANAGEMENT DISTRICT

Rev. 4/01

COUNTY <b>PALM BEACH</b>	PROJECT <b>Hydrology – Palm Beach County Wells</b>	DESIGNATION <b>PB 690 2005</b>
SECTION <b>21</b>	TOWNSHIP <b>46 SOUTH</b>	RANGE <b>43 EAST</b>
<b>GEOGRAPHIC INDEX OF QUAD</b>		
Established by <u>Nick Miller Inc.</u> Recovered by	NAME OF QUADRANGLE <b>Delray Beach</b>	
SURVEYOR <u>Stephen M. Gordon</u> DATE <u>5/9/2005</u>	FIELD BOOK <u>4</u> PAGE <u>50</u>	
HORIZONTAL DATUM: 1927 <input checked="" type="radio"/> 1983 Other _____ (circle one) ZONE <input checked="" type="radio"/> E or W		
STATE PLANE COORDINATES	E 960,738 ft	N 771,604 ft
LATITUDE: N 26.45343°	LONGITUDE: W 80.06863°	
VERTICAL DATUM: MSL 1929 <input checked="" type="radio"/> 1988 Other _____ (circle one)	EL. 5.02 ft	
VERTICAL DATUM: MSL <input checked="" type="radio"/> 1929 1988 Other _____ (circle one)	EL. 6.56 ft	
CONTROL ACCURACY: HORIZONTAL 1 2 3 <input checked="" type="radio"/> SUB-METER (circle one) VERTICAL 1 2 <input checked="" type="radio"/> 3		
<b>DESCRIPTION</b>		
<p>To Reach:</p> <p>FROM INTERSECTION ATLANTIC AVENUE &amp; SE 5<sup>TH</sup> AVENUE (FEDERAL HWY). GO SOUTH ON SE 5<sup>TH</sup> AVENUE FOR 0.5 MILES TO SE 5<sup>TH</sup> STREET. GO WEST ON SE 5<sup>TH</sup> STREET FOR +/- 125 FEET. CONCRETE MONUMENT WILL BE ON RIGHT 7.2 FEET WEST OF MONITORING WELL PB 690. 6.45 FEET EAST OF PK NAIL &amp; DISK LB 4813 IN SOUTH SIDE OF OAK TREE. 11.0 FEET NORTH OF SE 5<sup>TH</sup> STREET. 11.0 FEET SOUTH OF CENTERLINE SW 5<sup>TH</sup> STREET. MAGNET SET 1 FOOT NORTH OF CONCRETE MONUMENT.</p> <p>Benchmarks Used: Z 233, 14.33, DELRAY SOUTH BASE RM 6, B 234</p> <p>Notable Land marks:</p>		



SOUTH FLORIDA WATER MANAGEMENT DISTRICT

Rev. 4/01

SKETCH

1078                      SFLWMD

SET CON. MONUMENT  
AT WELL SITE PB-690

PB-690

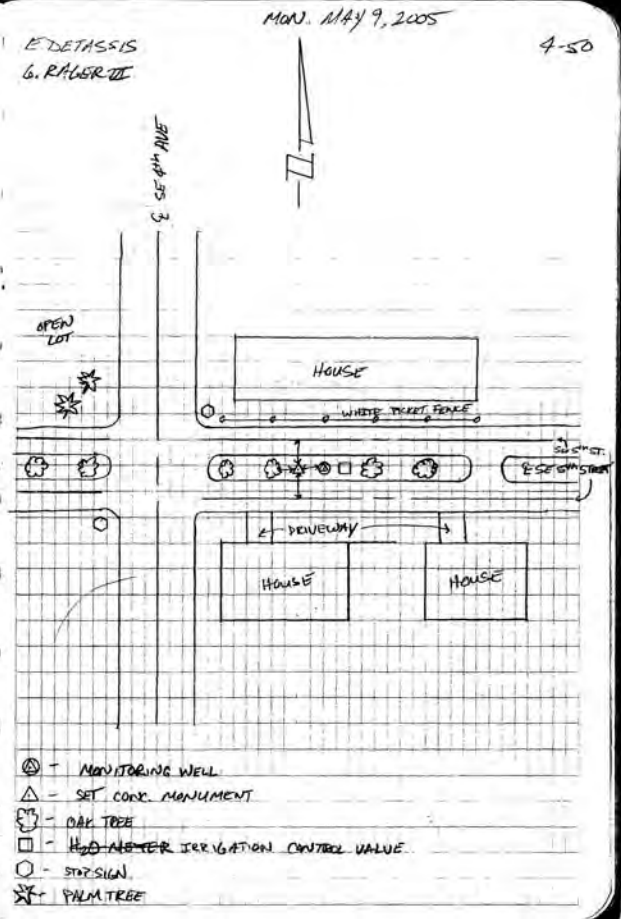
SET POURED-IN-PLACE CONC. MONUMENT  
SET MAGNET 1' NORTH OF CONC. MONUMENT

- SET CONC. MON. 7.2' WEST OF PB 690 MONITORING WELL  
 - " " " 6.45' EAST OF PERMAN. DISK IN OAK TREE  
 - " " " 11.0' NORTH OF E SE 5TH STREET  
 - " " " 11.0' SOUTH OF E SW 5TH STREET

STAMPED PB 690  
2005

COORDINATES ON MONITORING WELL PB 690  
 STATE PLANE 82                      WGS 84  
 N. 235185.794 m                      N. 26° 27' 12.39333"  
 E. 292883.378 m                      E. W. 080° 04' 07.02789"

COORDINATES ON CONC. MONUMENT  
 STATE PLANE 82                      WGS 84  
 N. 235184.624 m                      N. 26° 27' 12.35566"  
 E. 292882.563 m                      W. 080° 04' 07.07565"





-\*- FIELD ABSTRACT -\*-

050531-050818 HGZ L26803 8.0 MM ORDER 2 CLASS 2 PAGE 1  
 SOUTH FLORIDA WATER MANAGEMENT DISTRICT  
 PALM BEACH COUNTY MONITORING WELLS  
 ESTABLISH BENCH MARK NEAR MONITORING WELL PB 1605

FROM TO	START	F/B	DIST TOTAL (KM)	ELEV DIFF (MT)	-(F+B) TOTAL (MM)	MEAN DIFF FLD ELEV (MT)	I C
0220 Z 233						4.88300	
0220 Z 233 0219 PB 1647	5311020	F	1.05	-0.28939 *	0.00	-0.28939	1
			1.05		0.00	4.59361	
0219 PB 1647 0221 14.33	5311340 6020845	F B	0.85 0.82 1.87	-0.68831 * 0.69206 *	-3.75	-0.69018	1 1
					-3.75	3.90343	
0221 14.33 0224 PB 690	6071300 8181330	F B	1.43 1.34 3.22	-0.53991 * 0.54062 *	-0.71	-0.54026	2 2
	SL 1				-4.46	3.36317	
0224 PB 690 0223 DELRAY SOUTH BAS	6031200 6031315	B F	0.98 0.99 4.19	-1.52900 * 1.52832 *	0.68	1.52866	1 1
	SL 1				-3.78	4.89183	
0223 DELRAY SOUTH BAS 0222 B 234	6210840	F	1.95	0.67405 *	0.00	0.67405	1
	SL 2		6.14		-3.78	5.56588	
0222 B 234 0296 C 234	8181520	F	0.87	0.11838 *	0.00	0.11838	1
	SL 2		7.01		-3.78	5.68426	
0223 DELRAY SOUTH BAS 0295 PB 1605 A	8181310 8181415	F B	0.99 0.99 5.18	-0.73480 * 0.73624 *	-1.44	-0.73552	1 1
	SL 1				-5.22	4.15631	
0295 PB 1605 A 0294 PB 1605	8180915 8180930	B F	2.66 2.65 7.83	0.42342 * -0.42280 *	-0.62	-0.42311	1 2
	SL 1				-5.84	3.73320	

ELEVATION REJECTION AND ERROR CODES

- C - section elevation difference was rejected for cause  
i.e. \*43\* record rejection code set to "F"
- R - section elevation difference was rejected by Halperin rejection algorithm
- @ - section elevation difference does not include refraction correction
- \* - section elevation difference does not include rod correction

INSTRUMENT CODE	INSTRUMENT	RODS
1	243 - 331132	396 - 111
2	243 - 332854	396 - 333
		396 - 222
		396 - 444

LEVEL LINE SECTION RUNNING TREE

0220  
 0219  
 0221 (0224  
 0223 (0222

(0295  
0294 0296)

FROM	TO	N. LATITUDE	W. LONGITUDE	FIELD DISTANCE	VS. COMPUTED
	0220	262808	0800409	0.00	0.00
0220	0219	262739	0800418	1.05	0.93
0219	0221	262742	0800351	0.82	0.75
0221	0224	262712	0800407	1.34	1.02
0224	0223	262650	0800422	0.98	0.79
0223	0222	262548	0800431	1.95	1.92
0222	0296	262522	0800435	0.87	0.81
0223	0295	262649	0800457	0.99	0.97
0295	0294	262634	0800621	2.65	2.37

Windows Abstra Version 2.3 -- Jan 1, 2004 -- Fri Aug 19 10:17:07 2005

SECTION  
FROM TO

E R R O R M E S S A G E S



## The NGS Data Sheet

See file [dsdata.txt](#) for more information about the datasheet.

```

DATABASE = Sybase ,PROGRAM = datasheet, VERSION = 7.27
1 National Geodetic Survey, Retrieval Date = SEPTEMBER 20, 2005
AD2701 *****
AD2701 DESIGNATION - Z 233
AD2701 PID - AD2701
AD2701 STATE/COUNTY- FL/PALM BEACH
AD2701 USGS QUAD - DELRAY BEACH (1983)
AD2701
AD2701 *CURRENT SURVEY CONTROL
AD2701
AD2701 *-----*
AD2701* NAD 83(1986)- 26 28 08. (N) 080 04 09. (W) SCALED
AD2701* NAVD 88 - 4.883 (meters) 16.02 (feet) ADJUSTED
AD2701 *-----*
AD2701 GEOID HEIGHT- -26.07 (meters) GEOID03
AD2701 DYNAMIC HT - 4.875 (meters) 15.99 (feet) COMP
AD2701 MODELED GRAV- 979,095.4 (mgal) NAVD 88
AD2701
AD2701 VERT ORDER - FIRST CLASS II
AD2701
AD2701.The horizontal coordinates were scaled from a topographic map and have
AD2701.an estimated accuracy of +/- 6 seconds.
AD2701
AD2701.The orthometric height was determined by differential leveling
AD2701.and adjusted by the National Geodetic Survey in June 1991.
AD2701
AD2701.The geoid height was determined by GEOID03.
AD2701
AD2701.The dynamic height is computed by dividing the NAVD 88
AD2701.geopotential number by the normal gravity value computed on the
AD2701.Geodetic Reference System of 1980 (GRS 80) ellipsoid at 45
AD2701.degrees latitude (g = 980.6199 gals.).
AD2701
AD2701.The modeled gravity was interpolated from observed gravity values.
AD2701
AD2701;
AD2701; North East Units Estimated Accuracy
AD2701;SPC FL E - 236,900. 292,820. MT (+/- 180 meters Scaled)
AD2701
AD2701 SUPERSEDED SURVEY CONTROL
AD2701
AD2701 NGVD 29 (09/01/92) 5.355 (m) 17.57 (f) ADJUSTED 1 2
AD2701
AD2701.Superseded values are not recommended for survey control.
AD2701.NGS no longer adjusts projects to the NAD 27 or NGVD 29 datums.
AD2701.See file dsdata.txt to determine how the superseded data were derived.
AD2701
AD2701_U.S. NATIONAL GRID SPATIAL ADDRESS: 17RNK927279(NAD 83)
AD2701_MARKER: DB = BENCH MARK DISK
AD2701_SETTING: 7 = SET IN TOP OF CONCRETE MONUMENT
AD2701_SP_SET: CONCRETE POST
AD2701_STAMPING: Z 233 1965
AD2701_MARK LOGO: CGS
AD2701_STABILITY: C = MAY HOLD, BUT OF TYPE COMMONLY SUBJECT TO
AD2701+STABILITY: SURFACE MOTION
AD2701_SATELLITE: THE SITE LOCATION WAS REPORTED AS SUITABLE FOR
AD2701+SATELLITE: SATELLITE OBSERVATIONS - January 07, 2005
AD2701
AD2701 HISTORY - Date Condition Report By
AD2701 HISTORY - 1965 MONUMENTED CGS
AD2701 HISTORY - 1973 GOOD NGS
AD2701 HISTORY - 1984 GOOD USPSQD
AD2701 HISTORY - 1987 GOOD USPSQD
AD2701 HISTORY - 1987 GOOD USPSQD
AD2701 HISTORY - 1988 GOOD USPSQD
AD2701 HISTORY - 1988 GOOD USPSQD
AD2701 HISTORY - 1989 GOOD USPSQD
AD2701 HISTORY - 1989 GOOD USPSQD
AD2701 HISTORY - 1990 GOOD USPSQD
AD2701 HISTORY - 1990 GOOD USPSQD
AD2701 HISTORY - 19910110 GOOD NGS

```

## DATASHEETS

AD2701 HISTORY - 20031227 GOOD USPSQD  
AD2701 HISTORY - 20050107 GOOD USPSQD

AD2701 STATION DESCRIPTION

AD2701 DESCRIBED BY COAST AND GEODETIC SURVEY 1965  
AD2701 AT DELRAY BEACH.  
AD2701 AT DELRAY BEACH, ABOUT 0.5 MILE NORTH ALONG THE FLORIDA EAST  
AD2701 COAST RAILWAY FROM THE CROSSING OF E. ATLANTIC AVENUE, AT THE  
AD2701 CROSSING OF N.E. 4TH STREET, 0.35 MILE SOUTH OF MILEPOST 316,  
AD2701 54.0 FEET SOUTHWEST OF THE CENTER OF THE CROSSING, IN SECTION  
AD2701 16, R 43 E, T 46 S, 33.5 FEET WEST OF THE WEST RAIL OF THE  
AD2701 SOUTHBOUND MAIN TRACK, 26.0 FEET SOUTH OF THE CENTER LINE OF THE  
AD2701 STREET, 2.5 FEET NORTH OF A BRACE POLE, 11.0 FEET NORTH OF THE  
AD2701 NORTHEAST CORNER OF A FENCE AROUND A JUNK YARD, 1.5 FEET NORTH  
AD2701 OF A METAL WITNESS POST, ABOUT 1 FOOT BELOW THE LEVEL OF THE  
AD2701 TRACK AND SET IN THE TOP OF A CONCRETE POST PROJECTING 0.2 FOOT.

AD2701 STATION RECOVERY (1973)

AD2701 RECOVERY NOTE BY NATIONAL GEODETIC SURVEY 1973  
AD2701 RECOVERED IN GOOD CONDITION.

AD2701 STATION RECOVERY (1984)

AD2701 RECOVERY NOTE BY US POWER SQUADRON 1984  
AD2701 RECOVERED IN GOOD CONDITION.

AD2701 STATION RECOVERY (1987)

AD2701 RECOVERY NOTE BY US POWER SQUADRON 1987 (JHH)  
AD2701 RECOVERED IN GOOD CONDITION.

AD2701 STATION RECOVERY (1987)

AD2701 RECOVERY NOTE BY US POWER SQUADRON 1987 (BJS)  
AD2701 RECOVERED IN GOOD CONDITION.

AD2701 STATION RECOVERY (1988)

AD2701 RECOVERY NOTE BY US POWER SQUADRON 1988 (YH)  
AD2701 RECOVERED IN GOOD CONDITION.

AD2701 STATION RECOVERY (1988)

AD2701 RECOVERY NOTE BY US POWER SQUADRON 1988 (CEP)  
AD2701 RECOVERED IN GOOD CONDITION.

AD2701 STATION RECOVERY (1989)

AD2701 RECOVERY NOTE BY US POWER SQUADRON 1989 (JHF)  
AD2701 RECOVERED IN GOOD CONDITION.

AD2701 STATION RECOVERY (1989)

AD2701 RECOVERY NOTE BY US POWER SQUADRON 1989 (BJS)  
AD2701 RECOVERED IN GOOD CONDITION.

AD2701 STATION RECOVERY (1990)

AD2701 RECOVERY NOTE BY US POWER SQUADRON 1990 (BJS)  
AD2701 RECOVERED IN GOOD CONDITION.

AD2701 STATION RECOVERY (1990)

AD2701 RECOVERY NOTE BY US POWER SQUADRON 1990 (JHH)  
AD2701 RECOVERED IN GOOD CONDITION.

AD2701 STATION RECOVERY (1991)

AD2701 RECOVERY NOTE BY NATIONAL GEODETIC SURVEY 1991  
AD2701 IN DELRAY BEACH, AT THE INTERSECTION OF THE FLORIDA EAST COAST  
AD2701 RAILROAD AND NORTHEAST 4TH STREET, 14.2 M (46.6 FT) WEST OF THE NEAR  
AD2701 RAIL, 8.2 M (26.9 FT) SOUTH OF THE STREET CENTERLINE, 0.7 M (2.3 FT)  
AD2701 SOUTH OF A UTILITY BRACE POLE WITH A GUY WIRE, 0.4 M (1.3 FT) NORTH  
AD2701 OF A WITNESS POST, 0.3 M (1.0 FT) BELOW THE LEVEL OF THE STREET, AND  
AD2701 THE MONUMENT IS RECESSED 0.2 M (0.7 FT) BELOW THE GROUND SURFACE.

AD2701 STATION RECOVERY (2003)

AD2701 RECOVERY NOTE BY US POWER SQUADRON 2003 (AAS)



DATASHEETS

AD2701'BRACE POLE AND GUY WIRE GONE. MARK IS IN A PILE OF DIRT AND WITNESS

AD2701'POLE SIGN HAS BEEN BENT TO GROUND. DUG OUT AND LEFT EXPOSED.

AD2701

AD2701

STATION RECOVERY (2005)

AD2701

AD2701'RECOVERY NOTE BY US POWER SQUADRON 2005 (AAS)

AD2701'RECOVERED IN GOOD CONDITION.

\*\*\* retrieval complete.

Elapsed Time = 00:00:00

# The NGS Data Sheet

See file [dsdata.txt](#) for more information about the datasheet.

```

DATABASE = Sybase ,PROGRAM = datasheet, VERSION = 7.27
1 National Geodetic Survey, Retrieval Date = SEPTEMBER 20, 2005
AD2692 *****
AD2692 DESIGNATION - 14.33
AD2692 PID - AD2692
AD2692 STATE/COUNTY- FL/PALM BEACH
AD2692 USGS QUAD - DELRAY BEACH (1983)
AD2692
AD2692 *CURRENT SURVEY CONTROL
AD2692
AD2692 *-----*
AD2692* NAD 83(1986)- 26 27 42. (N) 080 03 51. (W) SCALED
AD2692* NAVD 88 - 3.896 (meters) 12.78 (feet) ADJUSTED
AD2692 *-----*
AD2692 GEOID HEIGHT- -26.09 (meters) GEOID03
AD2692 DYNAMIC HT - 3.890 (meters) 12.76 (feet) COMP
AD2692 MODELED GRAV- 979,094.2 (mgal) NAVD 88
AD2692
AD2692 VERT ORDER - FIRST CLASS I
AD2692
AD2692.The horizontal coordinates were scaled from a topographic map and have
AD2692.an estimated accuracy of +/- 6 seconds.
AD2692
AD2692.The orthometric height was determined by differential leveling
AD2692.and adjusted by the National Geodetic Survey in June 1991.
AD2692
AD2692.The geoid height was determined by GEOID03.
AD2692
AD2692.The dynamic height is computed by dividing the NAVD 88
AD2692.geopotential number by the normal gravity value computed on the
AD2692.Geodetic Reference System of 1980 (GRS 80) ellipsoid at 45
AD2692.degrees latitude (g = 980.6199 gals.).
AD2692
AD2692.The modeled gravity was interpolated from observed gravity values.
AD2692
AD2692;
AD2692;SPC FL E - North East Units Estimated Accuracy
AD2692; 236,100. 293,320. MT (+/- 180 meters Scaled)
AD2692
AD2692 SUPERSEDED SURVEY CONTROL
AD2692
AD2692 NGVD 29 (??/??/92) 4.368 (m) 14.33 (f) ADJ UNCH 1 1
AD2692
AD2692.Superseded values are not recommended for survey control.
AD2692.NGS no longer adjusts projects to the NAD 27 or NGVD 29 datums.
AD2692.See file dsdata.txt to determine how the superseded data were derived.
AD2692
AD2692_U.S. NATIONAL GRID SPATIAL ADDRESS: 17RNK932271(NAD 83)
AD2692_MARKER: DD = SURVEY DISK
AD2692_SETTING: 36 = SET IN A MASSIVE STRUCTURE
AD2692_SP_SET: ABUTMENT
AD2692_STAMPING: 14.33
AD2692_STABILITY: B = PROBABLY HOLD POSITION/ELEVATION WELL
AD2692_SATELLITE: THE SITE LOCATION WAS REPORTED AS SUITABLE FOR
AD2692+SATELLITE: SATELLITE OBSERVATIONS - December 27, 2003
AD2692
AD2692 HISTORY - Date Condition Report By
AD2692 HISTORY - UNK MONUMENTED FLHD
AD2692 HISTORY - 1965 GOOD NGS
AD2692 HISTORY - 1973 GOOD NGS
AD2692 HISTORY - 1984 GOOD USPSQD
AD2692 HISTORY - 1987 GOOD USPSQD
AD2692 HISTORY - 1987 GOOD USPSQD
AD2692 HISTORY - 1987 GOOD USPSQD
AD2692 HISTORY - 1988 GOOD USPSQD
AD2692 HISTORY - 1988 GOOD USPSQD
AD2692 HISTORY - 1989 GOOD USPSQD
AD2692 HISTORY - 1989 GOOD USPSQD
AD2692 HISTORY - 1989 GOOD USPSQD
AD2692 HISTORY - 1990 GOOD USPSQD
AD2692 HISTORY - 20000914 GOOD USPSQD

```



## DATASHEETS

AD2692 HISTORY - 20031227 GOOD USPSQD  
AD2692 HISTORY - 20050107 MARK NOT FOUND USPSQD

AD2692 STATION DESCRIPTION

AD2692 DESCRIBED BY NATIONAL GEODETIC SURVEY 1965  
AD2692 AT DELRAY BEACH.  
AD2692 AT DELRAY BEACH, IN SECTION 16, R 35 E, T 46 S, ABOUT 0.4  
AD2692 MILE EAST ALONG EAST ATLANTIC AVENUE FROM THE CROSSING OF THE  
AD2692 FLORIDA EAST COAST RAILWAY AT DELRAY BEACH, SET ON THE TOP OF THE  
AD2692 SOUTH END OF THE WEST CONCRETE ABUTMENT OF THE DRAWBRIDGE OVER  
AD2692 THE INTRACOASTAL WATERWAY, 8.8 FEET SOUTH OF THE SOUTH CURB  
AD2692 OF THE BRIDGE AND ABOUT LEVEL WITH THE BRIDGE SIDEWALK.

AD2692 STATION RECOVERY (1973)

AD2692 RECOVERY NOTE BY NATIONAL GEODETIC SURVEY 1973  
AD2692 RECOVERED IN GOOD CONDITION.

AD2692 STATION RECOVERY (1984)

AD2692 RECOVERY NOTE BY US POWER SQUADRON 1984  
AD2692 RECOVERED IN GOOD CONDITION.

AD2692 STATION RECOVERY (1987)

AD2692 RECOVERY NOTE BY US POWER SQUADRON 1987 (BJS)  
AD2692 RECOVERED IN GOOD CONDITION.

AD2692 STATION RECOVERY (1987)

AD2692 RECOVERY NOTE BY US POWER SQUADRON 1987 (JHH)  
AD2692 RECOVERED IN GOOD CONDITION.

AD2692 STATION RECOVERY (1987)

AD2692 RECOVERY NOTE BY US POWER SQUADRON 1987 (JTN)  
AD2692 RECOVERED IN GOOD CONDITION.

AD2692 STATION RECOVERY (1988)

AD2692 RECOVERY NOTE BY US POWER SQUADRON 1988 (JHH)  
AD2692 RECOVERED IN GOOD CONDITION.

AD2692 STATION RECOVERY (1988)

AD2692 RECOVERY NOTE BY US POWER SQUADRON 1988 (YH)  
AD2692 RECOVERED IN GOOD CONDITION.

AD2692 STATION RECOVERY (1989)

AD2692 RECOVERY NOTE BY US POWER SQUADRON 1989 (BJS)  
AD2692 RECOVERED IN GOOD CONDITION.

AD2692 STATION RECOVERY (1989)

AD2692 RECOVERY NOTE BY US POWER SQUADRON 1989 (JHF)  
AD2692 RECOVERED IN GOOD CONDITION.

AD2692 STATION RECOVERY (1989)

AD2692 RECOVERY NOTE BY US POWER SQUADRON 1989 (JTE)  
AD2692 RECOVERED IN GOOD CONDITION.

AD2692 STATION RECOVERY (1990)

AD2692 RECOVERY NOTE BY US POWER SQUADRON 1990 (BJS)  
AD2692 RECOVERED IN GOOD CONDITION.

AD2692 STATION RECOVERY (2000)

AD2692 RECOVERY NOTE BY US POWER SQUADRON 2000 (BJS)  
AD2692 RECOVERED IN GOOD CONDITION.

AD2692 STATION RECOVERY (2003)

AD2692 RECOVERY NOTE BY US POWER SQUADRON 2003 (AAS)  
AD2692 RECOVERED IN GOOD CONDITION.

AD2692 STATION RECOVERY (2005)

AD2692

DATASHEETS

AD2692'RECOVERY NOTE BY US POWER SQUADRON 2005 (AAS)  
AD2692'MARK NOT FOUND.

\*\*\* retrieval complete.  
Elapsed Time = 00:00:00

# The NGS Data Sheet

See file [dsdata.txt](#) for more information about the datasheet.

```

DATABASE = Sybase ,PROGRAM = datasheet, VERSION = 7.27
1 National Geodetic Survey, Retrieval Date = SEPTEMBER 20, 2005
AD2682 *****
AD2682 DESIGNATION - B 234
AD2682 PID - AD2682
AD2682 STATE/COUNTY- FL/PALM BEACH
AD2682 USGS QUAD - DELRAY BEACH (1983)
AD2682
AD2682 *CURRENT SURVEY CONTROL
AD2682
AD2682 *-----*
AD2682 * NAD 83(1986)- 26 25 48. (N) 080 04 31. (W) SCALED
AD2682 * NAVD 88 - 5.569 (meters) 18.27 (feet) ADJUSTED
AD2682 *-----*
AD2682 GEOID HEIGHT- -26.03 (meters) GEOID03
AD2682 DYNAMIC HT - 5.560 (meters) 18.24 (feet) COMP
AD2682 MODELED GRAV- 979,092.1 (mgal) NAVD 88
AD2682
AD2682 VERT ORDER - FIRST CLASS I
AD2682
AD2682 The horizontal coordinates were scaled from a topographic map and have
AD2682 an estimated accuracy of +/- 6 seconds.
AD2682
AD2682 The orthometric height was determined by differential leveling
AD2682 and adjusted by the National Geodetic Survey in May 1994.
AD2682
AD2682 The geoid height was determined by GEOID03.
AD2682
AD2682 The dynamic height is computed by dividing the NAVD 88
AD2682 geopotential number by the normal gravity value computed on the
AD2682 Geodetic Reference System of 1980 (GRS 80) ellipsoid at 45
AD2682 degrees latitude (g = 980.6199 gals.).
AD2682
AD2682 The modeled gravity was interpolated from observed gravity values.
AD2682
AD2682 ;
AD2682 ; North East Units Estimated Accuracy
AD2682 ; SPC FL E - 232,580. 292,240. MT (+/- 180 meters Scaled)
AD2682
AD2682 SUPERSEDED SURVEY CONTROL
AD2682
AD2682 NAVD 88 (06/15/91) 5.582 (m) 18.31 (f) UNKNOWN 1 1
AD2682 NGVD 29 (09/01/92) 6.037 (m) 19.81 (f) ADJUSTED 1 1
AD2682
AD2682 Superseded values are not recommended for survey control.
AD2682 NGS no longer adjusts projects to the NAD 27 or NGVD 29 datums.
AD2682 See file dsdata.txt to determine how the superseded data were derived.
AD2682
AD2682 U.S. NATIONAL GRID SPATIAL ADDRESS: 17RNK922236(NAD 83)
AD2682 MARKER: DB = BENCH MARK DISK
AD2682 SETTING: 7 = SET IN TOP OF CONCRETE MONUMENT
AD2682 SP_SET: CONCRETE POST
AD2682 STAMPING: B 234 1965
AD2682 MARK LOGO: CGS
AD2682 STABILITY: C = MAY HOLD, BUT OF TYPE COMMONLY SUBJECT TO
AD2682 +STABILITY: SURFACE MOTION
AD2682 SATELLITE: THE SITE LOCATION WAS REPORTED AS SUITABLE FOR
AD2682 +SATELLITE: SATELLITE OBSERVATIONS - January 07, 2005
AD2682
AD2682 HISTORY - Date Condition Report By
AD2682 HISTORY - 1965 MONUMENTED CGS
AD2682 HISTORY - 1973 GOOD NGS
AD2682 HISTORY - 1984 GOOD USPSQD
AD2682 HISTORY - 1985 GOOD USPSQD
AD2682 HISTORY - 1987 GOOD USPSQD
AD2682 HISTORY - 1987 MARK NOT FOUND USPSQD
AD2682 HISTORY - 1988 MARK NOT FOUND USPSQD
AD2682 HISTORY - 1989 GOOD USPSQD
AD2682 HISTORY - 1989 GOOD USPSQD
AD2682 HISTORY - 1989 GOOD USPSQD
AD2682 HISTORY - 1990 GOOD USPSQD

```

## DATASHEETS

AD2682 HISTORY - 19910107 GOOD NGS  
 AD2682 HISTORY - 20031229 GOOD USPSQD  
 AD2682 HISTORY - 20050107 GOOD USPSQD

## AD2682 STATION DESCRIPTION

AD2682 DESCRIBED BY COAST AND GEODETIC SURVEY 1965  
 AD2682 2.2 MI S FROM DELRAY BEACH.  
 AD2682 ABOUT 2.15 MILES SOUTH ALONG THE FLORIDA EAST COAST RAILWAY  
 AD2682 FROM THE CROSSING OF E. ATLANTIC AVE AT DELRAY BEACH, IN SECTION  
 AD2682 29, R 43 E, T 46 S, 55 FEET EAST-SOUTHEAST OF AND ACROSS THE  
 AD2682 TRACKS FROM MILEPOST 319, 50 FEET WEST-SOUTHWEST OF AND ACROSS  
 AD2682 OLD DIXIE HIGHWAY FROM CABLE LINE POLE NO. 2, 29 FEET EAST OF THE  
 AD2682 EAST RAIL OF THE NORTHBOUND TRACK, 27 1/2 FEET WEST OF THE CENTER  
 AD2682 LINE OF OLD DIXIE HIGHWAY, 2 FEET NORTH OF A METAL WITNESS POST,  
 AD2682 ABOUT LEVEL WITH THE TRACK AND SET IN THE TOP OF A CONCRETE POST  
 AD2682 PROJECTING 3 INCHES ABOVE THE LEVEL OF THE GROUND.

## AD2682 STATION RECOVERY (1973)

AD2682 RECOVERY NOTE BY NATIONAL GEODETIC SURVEY 1973  
 AD2682 RECOVERED IN GOOD CONDITION.

## AD2682 STATION RECOVERY (1984)

AD2682 RECOVERY NOTE BY US POWER SQUADRON 1984  
 AD2682 RECOVERED IN GOOD CONDITION.

## AD2682 STATION RECOVERY (1985)

AD2682 RECOVERY NOTE BY US POWER SQUADRON 1985  
 AD2682 WITNESS POST MISSING. POWER LINE POLE NO LONGER THERE. MARK APPROX.  
 AD2682 18' BELOW LEVEL OF TRACK ABOUT LEVEL WITH ROADWAY.

## AD2682 STATION RECOVERY (1987)

AD2682 RECOVERY NOTE BY US POWER SQUADRON 1987 (BJS)  
 AD2682 RECOVERED IN GOOD CONDITION.

## AD2682 STATION RECOVERY (1987)

AD2682 RECOVERY NOTE BY US POWER SQUADRON 1987 (JHH)  
 AD2682 MARK NOT FOUND.

## AD2682 STATION RECOVERY (1988)

AD2682 RECOVERY NOTE BY US POWER SQUADRON 1988 (JHH)  
 AD2682 MARK NOT FOUND.

## AD2682 STATION RECOVERY (1989)

AD2682 RECOVERY NOTE BY US POWER SQUADRON 1989 (JHF)  
 AD2682 RECOVERED IN GOOD CONDITION.

## AD2682 STATION RECOVERY (1989)

AD2682 RECOVERY NOTE BY US POWER SQUADRON 1989 (YCH)  
 AD2682 RECOVERED IN GOOD CONDITION.

## AD2682 STATION RECOVERY (1989)

AD2682 RECOVERY NOTE BY US POWER SQUADRON 1989 (BJS)  
 AD2682 RECOVERED IN GOOD CONDITION.

## AD2682 STATION RECOVERY (1990)

AD2682 RECOVERY NOTE BY US POWER SQUADRON 1990 (BJS)  
 AD2682 RECOVERED IN GOOD CONDITION.

## AD2682 STATION RECOVERY (1991)

AD2682 RECOVERY NOTE BY NATIONAL GEODETIC SURVEY 1991  
 AD2682 3.5 KM (2.2 MI) SOUTHERLY ALONG THE FLORIDA EAST COAST RAILROAD FROM  
 AD2682 THE INTERSECTION OF WEST ATLANTIC BOULEVARD (STATE HIGHWAY 806) IN  
 AD2682 DELRAY BEACH, 13.9 M (45.6 FT) EAST OF RAILROAD MILEPOST 319, 8.3 M  
 AD2682 (27.2 FT) WEST OF AND LEVEL WITH THE CENTERLINE OF DIXIE HIGHWAY, 8.7  
 AD2682 M (28.5 FT) EAST OF THE NEAR RAIL, 0.5 M (1.6 FT) NORTH OF A WITNESS  
 AD2682 POST, AND THE MONUMENT IS FLUSH WITH THE GROUND SURFACE.

## AD2682 STATION RECOVERY (2003)

AD2682



DATASHEETS

AD2682'RECOVERY NOTE BY US POWER SQUADRON 2003 (AAS)  
AD2682'RECOVERED IN GOOD CONDITION.  
AD2682  
AD2682 STATION RECOVERY (2005)  
AD2682  
AD2682'RECOVERY NOTE BY US POWER SQUADRON 2005 (AAS)  
AD2682'RECOVERED IN GOOD CONDITION.

\*\*\* retrieval complete.  
Elapsed Time = 00:00:00

# The NGS Data Sheet

See file [dsdata.txt](#) for more information about the datasheet.

DATABASE = Sybase ,PROGRAM = datasheet, VERSION = 7.27

1 National Geodetic Survey, Retrieval Date = SEPTEMBER 20, 2005

AD2680 \*\*\*\*\*

AD2680 DESIGNATION - C 234

AD2680 PID - AD2680

AD2680 STATE/COUNTY- FL/PALM BEACH

AD2680 USGS QUAD - DELRAY BEACH (1983)

AD2680

AD2680 \*CURRENT SURVEY CONTROL

AD2680

AD2680\* NAD 83(1999)- 26 25 22.46781(N) 080 04 35.65302(W) ADJUSTED

AD2680\* NAVD 88 - 5.677 (meters) 18.63 (feet) ADJUSTED

AD2680

AD2680 X - 984,981.960 (meters) COMP

AD2680 Y - -5,630,097.838 (meters) COMP

AD2680 Z - 2,821,089.240 (meters) COMP

AD2680 LAPLACE CORR- -4.15 (seconds) DEFLEC99

AD2680 ELLIP HEIGHT- -20.32 (meters) (12/12/02) GPS OBS

AD2680 GEOID HEIGHT- -26.02 (meters) GEOID03

AD2680 DYNAMIC HT - 5.668 (meters) 18.60 (feet) COMP

AD2680 MODELED GRAV- 979,091.7 (mgal) NAVD 88

AD2680

AD2680 HORZ ORDER - FIRST

AD2680 VERT ORDER - FIRST CLASS I

AD2680 ELLP ORDER - FOURTH CLASS I

AD2680

AD2680.The horizontal coordinates were established by GPS observations

AD2680.and adjusted by the National Geodetic Survey in December 2002.

AD2680

AD2680.The orthometric height was determined by differential leveling

AD2680.and adjusted by the National Geodetic Survey in May 1994.

AD2680

AD2680.The X, Y, and Z were computed from the position and the ellipsoidal ht.

AD2680

AD2680.The Laplace correction was computed from DEFLEC99 derived deflections.

AD2680

AD2680.The ellipsoidal height was determined by GPS observations

AD2680.and is referenced to NAD 83.

AD2680

AD2680.The geoid height was determined by GEOID03.

AD2680

AD2680.The dynamic height is computed by dividing the NAVD 88

AD2680.geopotential number by the normal gravity value computed on the

AD2680.Geodetic Reference System of 1980 (GRS 80) ellipsoid at 45

AD2680.degrees latitude (g = 980.6199 gals.).

AD2680

AD2680.The modeled gravity was interpolated from observed gravity values.

AD2680

AD2680;

	North	East	Units	Scale	Factor	Converg.
AD2680;SPC FL E	- 231,796.903	292,115.143	MT	1.00004590		+0 24 39.4
AD2680;UTM 17	- 2,922,849.797	592,083.713	MT	0.99970469		+0 24 39.4

AD2680;UTM 17 - 2,922,849.797 592,083.713 MT 0.99970469 +0 24 39.4

AD2680

AD2680! - Elev Factor x Scale Factor = Combined Factor

AD2680!SPC FL E - 1.00000319 x 1.00004590 = 1.00004909

AD2680!UTM 17 - 1.00000319 x 0.99970469 = 0.99970788

AD2680

AD2680

AD2680 SUPERSEDED SURVEY CONTROL

AD2680

AD2680 NAVD 88 (06/15/91) 5.670 (m) 18.60 (f) UNKNOWN 1 1

AD2680 NGVD 29 (09/01/92) 6.145 (m) 20.16 (f) ADJUSTED 1 1

AD2680

AD2680.Superseded values are not recommended for survey control.

AD2680.NGS no longer adjusts projects to the NAD 27 or NGVD 29 datums.

AD2680.[See file dsdata.txt](#) to determine how the superseded data were derived.

AD2680

AD2680\_U.S. NATIONAL GRID SPATIAL ADDRESS: 17RNK9208422850(NAD 83)

AD2680\_MARKER: DB = BENCH MARK DISK

AD2680\_SETTING: 32 = SET IN A RETAINING WALL OR CONCRETE LEDGE

AD2680\_SP\_SET: WINGWALL

## DATASHEETS

AD2680\_STAMPING: C 234 1965  
 AD2680\_MARK LOGO: CGS  
 AD2680\_MAGNETIC: N = NO MAGNETIC MATERIAL  
 AD2680\_STABILITY: C = MAY HOLD, BUT OF TYPE COMMONLY SUBJECT TO  
 AD2680+STABILITY: SURFACE MOTION  
 AD2680\_SATELLITE: THE SITE LOCATION WAS REPORTED AS SUITABLE FOR  
 AD2680+SATELLITE: SATELLITE OBSERVATIONS - January 07, 2005

AD2680	HISTORY	- Date	Condition	Report By
AD2680	HISTORY	- 1965	MONUMENTED	CGS
AD2680	HISTORY	- 1973	GOOD	NGS
AD2680	HISTORY	- 1984	GOOD	USPSQD
AD2680	HISTORY	- 1985	GOOD	USPSQD
AD2680	HISTORY	- 1987	GOOD	USPSQD
AD2680	HISTORY	- 1987	GOOD	USPSQD
AD2680	HISTORY	- 1988	GOOD	USPSQD
AD2680	HISTORY	- 1989	GOOD	USPSQD
AD2680	HISTORY	- 1989	GOOD	USPSQD
AD2680	HISTORY	- 1989	GOOD	USPSQD
AD2680	HISTORY	- 1990	GOOD	USPSQD
AD2680	HISTORY	- 1990	GOOD	USPSQD
AD2680	HISTORY	- 19910107	GOOD	NGS
AD2680	HISTORY	- 20020521	GOOD	MAPTEC
AD2680	HISTORY	- 20031229	GOOD	USPSQD
AD2680	HISTORY	- 20050107	GOOD	USPSQD

AD2680  
 AD2680 STATION DESCRIPTION

AD2680 DESCRIBED BY COAST AND GEODETIC SURVEY 1965  
 AD2680 2.6 MI S FROM DELRAY BEACH.  
 AD2680 ABOUT 2.65 MILES SOUTH ALONG THE FLORIDA EAST COAST RAILWAY  
 AD2680 FROM THE CROSSING OF E. ATLANTIC AVE AT DELRAY BEACH, 0.5 MILE  
 AD2680 SOUTH OF MILEPOST 319, IN SECTION 32, R 43 E, T 46 S, SET ON  
 AD2680 THE TOP OF THE WEST END OF THE NORTH CONCRETE ABUTMENT OF A  
 AD2680 RAILWAY BRIDGE OVER CANAL NO. 15, 9.5 FEET WEST OF THE WEST  
 AD2680 RAIL, 1.3 FEET EAST OF THE WEST END OF THE ABUTMENT AND 1 FOOT  
 AD2680 BELOW THE LEVEL OF THE TRACK.

AD2680  
 AD2680 STATION RECOVERY (1973)

AD2680 RECOVERY NOTE BY NATIONAL GEODETIC SURVEY 1973  
 AD2680 RECOVERED IN GOOD CONDITION.

AD2680  
 AD2680 STATION RECOVERY (1984)

AD2680 RECOVERY NOTE BY US POWER SQUADRON 1984  
 AD2680 RECOVERED IN GOOD CONDITION.

AD2680  
 AD2680 STATION RECOVERY (1985)

AD2680 RECOVERY NOTE BY US POWER SQUADRON 1985  
 AD2680 RECOVERED IN GOOD CONDITION.

AD2680  
 AD2680 STATION RECOVERY (1987)

AD2680 RECOVERY NOTE BY US POWER SQUADRON 1987 (JHH)  
 AD2680 RECOVERED IN GOOD CONDITION.

AD2680  
 AD2680 STATION RECOVERY (1987)

AD2680 RECOVERY NOTE BY US POWER SQUADRON 1987 (BJS)  
 AD2680 RECOVERED IN GOOD CONDITION.

AD2680  
 AD2680 STATION RECOVERY (1988)

AD2680 RECOVERY NOTE BY US POWER SQUADRON 1988 (CEP)  
 AD2680 RECOVERED IN GOOD CONDITION.

AD2680  
 AD2680 STATION RECOVERY (1989)

AD2680 RECOVERY NOTE BY US POWER SQUADRON 1989 (BJS)  
 AD2680 RECOVERED IN GOOD CONDITION.

AD2680  
 AD2680 STATION RECOVERY (1989)

AD2680 RECOVERY NOTE BY US POWER SQUADRON 1989 (JHF)  
 AD2680 RECOVERED IN GOOD CONDITION.

AD2680  
 AD2680 STATION RECOVERY (1989)

AD2680 RECOVERY NOTE BY US POWER SQUADRON 1989 (YCH)

DATASHEETS

AD2680 RECOVERED IN GOOD CONDITION.

AD2680

AD2680 STATION RECOVERY (1990)

AD2680

AD2680 RECOVERY NOTE BY US POWER SQUADRON 1990 (BJS)

AD2680 RECOVERED IN GOOD CONDITION.

AD2680

AD2680 STATION RECOVERY (1990)

AD2680

AD2680 RECOVERY NOTE BY US POWER SQUADRON 1990 (JHH)

AD2680 RECOVERED IN GOOD CONDITION.

AD2680

AD2680 STATION RECOVERY (1991)

AD2680

AD2680 RECOVERY NOTE BY NATIONAL GEODETIC SURVEY 1991

AD2680 4.3 KM (2.7 MI) SOUTHERLY ALONG THE FLORIDA EAST COAST RAILROAD FROM

AD2680 THE INTERSECTION OF WEST ATLANTIC BOULEVARD (STATE HIGHWAY 806) IN

AD2680 DELRAY BEACH, IN TOP OF AND 0.4 M (1.3 FT) EAST OF THE WEST END OF

AD2680 THE NORTH CONCRETE WINGWALL OF A RAILROAD BRIDGE SPANNING A CANAL,

AD2680 7.0 M (23.0 FT) WEST OF THE NEAR RAIL, AND 0.3 M (1.0 FT) BELOW THE

AD2680 LEVEL OF THE TRACK.

AD2680

AD2680 STATION RECOVERY (2002)

AD2680

AD2680 RECOVERY NOTE BY MAPTECH INCORPORATED 2002 (CDP)

AD2680 RECOVERED AS DESCRIBED.

AD2680

AD2680

AD2680 STATION RECOVERY (2003)

AD2680

AD2680 RECOVERY NOTE BY US POWER SQUADRON 2003 (AAS)

AD2680 RECOVERED IN GOOD CONDITION.

AD2680

AD2680 STATION RECOVERY (2005)

AD2680

AD2680 RECOVERY NOTE BY US POWER SQUADRON 2005 (AAS)

AD2680 RECOVERED IN GOOD CONDITION.

\*\*\* retrieval complete.

Elapsed Time = 00:00:01



# The NGS Data Sheet

See file [dsdata.txt](#) for more information about the datasheet.

DATABASE = Sybase ,PROGRAM = datasheet, VERSION = 7.27

1 National Geodetic Survey, Retrieval Date = SEPTEMBER 20, 2005

AD5722 \*\*\*\*\*

AD5722 DESIGNATION - DELRAY SOUTH BASE RM 6

AD5722 PID - AD5722

AD5722 STATE/COUNTY- FL/PALM BEACH

AD5722 USGS QUAD - DELRAY BEACH (1983)

AD5722

AD5722 \*CURRENT SURVEY CONTROL

AD5722\* NAD 83(1999)- 26 26 50.98309(N) 080 04 22.18381(W) ADJUSTED

AD5722\* NAVD 88 - 4.888 (meters) 16.04 (feet) ADJUSTED

AD5722

AD5722 X - 985,140.391 (meters) COMP

AD5722 Y - -5,628,838.103 (meters) COMP

AD5722 Z - 2,823,528.156 (meters) COMP

AD5722 LAPLACE CORR- -4.23 (seconds) DEFLEC99

AD5722 ELLIP HEIGHT- -21.23 (meters) (07/06/01) GPS OBS

AD5722 GEOID HEIGHT- -26.05 (meters) GEOID03

AD5722 DYNAMIC HT - 4.880 (meters) 16.01 (feet) COMP

AD5722 MODELED GRAV- 979,093.4 (mgal) NAVD 88

AD5722

AD5722 HORZ ORDER - FIRST

AD5722 VERT ORDER - FIRST CLASS II

AD5722 ELLP ORDER - FOURTH CLASS II

AD5722

AD5722.The horizontal coordinates were established by GPS observations

AD5722.and adjusted by the National Geodetic Survey in July 2001.

AD5722

AD5722.The orthometric height was determined by differential leveling

AD5722.and adjusted by the National Geodetic Survey in May 1994.

AD5722

AD5722.The X, Y, and Z were computed from the position and the ellipsoidal ht.

AD5722

AD5722.The Laplace correction was computed from DEFLEC99 derived deflections.

AD5722

AD5722.The ellipsoidal height was determined by GPS observations

AD5722.and is referenced to NAD 83.

AD5722

AD5722.The geoid height was determined by GEOID03.

AD5722

AD5722.The dynamic height is computed by dividing the NAVD 88

AD5722.geopotential number by the normal gravity value computed on the

AD5722.Geodetic Reference System of 1980 (GRS 80) ellipsoid at 45

AD5722.degrees latitude (g = 980.6199 gals.).

AD5722

AD5722.The modeled gravity was interpolated from observed gravity values.

AD5722

AD5722; North East Units Scale Factor Converg.

AD5722;SPC FL E - 234,523.816 292,468.757 MT 1.00004670 +0 24 46.7

AD5722;UTM 17 - 2,925,575.779 592,437.207 MT 0.99970549 +0 24 46.7

AD5722

AD5722! - Elev Factor x Scale Factor = Combined Factor

AD5722!SPC FL E - 1.00000334 x 1.00004670 = 1.00005004

AD5722!UTM 17 - 1.00000334 x 0.99970549 = 0.99970882

AD5722

AD5722: Primary Azimuth Mark Grid Az

AD5722:SPC FL E - CHURCH 186 40 33.8

AD5722:UTM 17 - CHURCH 186 40 33.8

AD5722

AD5722 |-----|

AD5722 | PID Reference Object Distance Geod. Az

AD5722 | | | | dddmmss.s

AD5722 | AD6844 DELRAY BEACH SEACREST PRESB CH APPROX. 4.7 KM 0021330.8

AD5722 | AD6842 DELRAY BEACH NORTH MUN TANK APPROX. 4.0 KM 0080133.5

AD5722 | AD6845 GULF STREAM GOLF CLUB TANK APPROX. 5.2 KM 0195314.6

AD5722 | AD2687 DELRAY SOUTH BASE RESET 49.952 METERS 13303

AD5722 | AD2686 DELRAY SOUTH BASE RM 5 51.664 METERS 14527

AD5722 | AD2685 DELRAY SOUTH BASE RM 2 263.068 METERS 18039

AD5722

DATASHEETS

AD5722	AD6818	CHURCH			APPROX. 6.2 KM	1870520.5
AD5722	AD6826	DELRAY BEACH	HARDRIVES	CO MAST	APPROX. 2.7 KM	2301837.5
AD5722	AD5724	DELRAY SOUTH	BASE RM	8	8.076 METERS	24728
AD5722	AD6833	DELRAY BEACH	RAD WDBF	SW MAST	APPROX. 2.8 KM	2903041.9
AD5722	AD6834	DELRAY BEACH	RAD WDBF	NE MAST	APPROX. 2.8 KM	2913401.8
AD5722	AD5725	DELRAY SOUTH	BASE RM	9	8.281 METERS	29553
AD5722	AD6831	DELRAY BEACH	SOUTH TANK		APPROX. 0.6 KM	3422304.4
AD5722	AD6838	DELRAY BEACH	CARTH METH	CH SP	APPROX. 2.3 KM	3574753.3
AD5722	AD5723	DELRAY SOUTH	BASE RM	7	24.361 METERS	35823

SUPERSEDED SURVEY CONTROL

AD5722	NAD 83(1990)-	26 26	50.98182(N)	080 04	22.18259(W)	AD( ) 1
AD5722	ELLIP H (03/31/93)	-21.23	(m)			GP( ) 4 1
AD5722	NAD 83(1990)-	26 26	50.98020(N)	080 04	22.18308(W)	AD( ) 1
AD5722	NAD 83(1986)-	26 26	50.98496(N)	080 04	22.19021(W)	AD( ) 1
AD5722	NAD 27	- 26 26	49.71876(N)	080 04	23.03632(W)	AD( ) 1
AD5722	NGVD 29 (09/01/92)	5.358	(m)		17.58 (f)	ADJUSTED 1 2

AD5722. Superseded values are not recommended for survey control.  
 AD5722. NGS no longer adjusts projects to the NAD 27 or NGVD 29 datums.  
 AD5722. [See file dsdata.txt](#) to determine how the superseded data were derived.

AD5722 U.S. NATIONAL GRID SPATIAL ADDRESS: 17RNK9243725576(NAD 83)

AD5722 MARKER: DR = REFERENCE MARK DISK  
 AD5722 SETTING: 7 = SET IN TOP OF CONCRETE MONUMENT  
 AD5722 SP\_SET: CONCRETE POST  
 AD5722 STAMPING: DELRAY S BASE NO 6 1934 1970  
 AD5722 MARK LOGO: NGS

AD5722 PROJECTION: FLUSH  
 AD5722 MAGNETIC: O = OTHER; SEE DESCRIPTION  
 AD5722 STABILITY: C = MAY HOLD, BUT OF TYPE COMMONLY SUBJECT TO  
 AD5722+STABILITY: SURFACE MOTION  
 AD5722 SATELLITE: THE SITE LOCATION WAS REPORTED AS SUITABLE FOR  
 AD5722+SATELLITE: SATELLITE OBSERVATIONS - October 13, 2004

HISTORY	- Date	Condition	Report By
AD5722	- 1970	MONUMENTED	NGS
AD5722	- 1970	GOOD	NGS
AD5722	- 1971	GOOD	NGS
AD5722	- 19820615	GOOD	NGS
AD5722	- 1990	GOOD	USPSQD
AD5722	- 19910107	GOOD	NGS
AD5722	- 19910722	GOOD	USPSQD
AD5722	- 19920730	GOOD	FL-099
AD5722	- 20010529	MARK NOT FOUND	INDIV
AD5722	- 20030922	GOOD	USPSQD
AD5722	- 20041013	GOOD	USPSQD

STATION DESCRIPTION

AD5722 DESCRIBED BY NATIONAL GEODETIC SURVEY 1970 (NCA)  
 AD5722 THE STATION IS 4 MILES NORTH OF BOCA RATON, 1 MILE SOUTH OF THE  
 AD5722 CENTER OF DELRAY BEACH, 1/2 MILE WEST OF U.S. HIGHWAY 1 AND ON  
 AD5722 PROPERTY OF THE CITY OF DELRAY BEACH.  
 AD5722 TO REACH THE STATION FROM DELRAY BEACH CITY HALL, GO EAST ON  
 AD5722 NORTHWEST FIRST STREET FOR 0.05 MILE TO NORTH SWINTON AVENUE. TURN  
 AD5722 RIGHT AND GO SOUTH ON NORTH SWINTON AVENUE FOR 1.15 MILES  
 AD5722 TO THE STATION ON THE LEFT AS DESCRIBED.  
 AD5722 STATION MARK, STAMPED DELRAY S BASE NO 6 1934 1970 IS A  
 AD5722 STANDARD DISK SET IN A ROUND CONCRETE MONUMENT THAT IS FLUSH  
 AD5722 WITH THE GROUND SURFACE. IT IS 89 FEET NORTH OF A FIRE  
 AD5722 HYDRANT, 67.5 FEET WEST OF THE WEST RAIL OF A RAILROAD TRACK,  
 AD5722 57 FEET NORTHWEST OF A TELEPHONE POLE AND 53 FEET EAST OF THE  
 AD5722 CENTER OF NORTH SWINTON AVENUE.  
 AD5722 OLD STATION, STAMPED DELRAY S BASE 1934 1962 IS A STANDARD  
 AD5722 DISK SET IN A SQUARE CONCRETE MONUMENT THAT IS 6 INCHES BELOW  
 AD5722 THE GROUND SURFACE. IT IS 51.5 FEET NORTH OF THE CENTER OF  
 AD5722 SOUTHEAST TENTH STREET, 49 FEET EAST OF THE EAST RAIL OF THE  
 AD5722 RAILROAD TRACK, 2.8 FEET NORTH OF A METAL WITNESS POST AND 1  
 AD5722 FOOT WEST OF A CHAIN LINK FENCE.  
 AD5722 REFERENCE MARK NUMBER 5, STAMPED DELRAY S BASE NO 5 1934 1962  
 AD5722 IS A STANDARD DISK SET IN A SQUARE CONCRETE MONUMENT THAT IS  
 AD5722 FLUSH WITH THE GROUND SURFACE. IT IS 30 FEET EAST OF THE EAST  
 AD5722 RAIL OF THE RAILROAD TRACK, 23.5 FEET NORTH OF THE CENTER OF  
 AD5722 SOUTHEAST TENTH STREET, 23.5 FEET WEST OF A FENCE CORNER AND

AD5722 1.2 FEET EAST OF A METAL WITNESS POST.  
AD5722  
AD5722 REFERENCE MARK NUMBER 7, STAMPED DELRAY S BASE NO 7 1934 1970  
AD5722 IS A STANDARD DISK SET IN A ROUND CONCRETE MONUMENT THAT IS  
AD5722 FLUSH WITH THE GROUND SURFACE. IT IS 129 FEET NORTHWEST OF A  
AD5722 TELEPHONE POLE, 96 FEET SOUTHWEST OF A TELEPHONE POLE, 81 FEET  
AD5722 WEST OF THE WEST RAIL OF THE RAILROAD TRACK AND 50 FEET EAST OF  
AD5722 THE CENTER OF NORTH SWINTON AVENUE.  
AD5722  
AD5722 REFERENCE MARK NUMBER 2 (AZIMUTH MARK), STAMPED DELRAY SOUTH  
AD5722 BASE NO 2 1933 IS A STANDARD DISK SET IN A SQUARE CONCRETE  
AD5722 MONUMENT THAT PROJECTS 3 INCHES. IT IS 29 FEET WEST OF THE  
AD5722 CENTER OF OLD DIXIE HIGHWAY, 27.5 FEET EAST OF THE EAST RAIL  
AD5722 OF THE RAILROAD TRACK AND 1.5 FEET NORTH OF A METAL WITNESS  
AD5722 POST.  
AD5722  
AD5722 BENCH MARK C 35, STAMPED C 35 1933 18.648 IS A STANDARD DISK  
AD5722 SET IN A SQUARE CONCRETE MONUMENT THAT IS FLUSH WITH THE GROUND  
AD5722 SURFACE. IT IS 31 FEET WEST OF THE CENTER OF OLD DIXIE HIGHWAY,  
AD5722 25 FEET EAST OF THE EAST RAIL OF THE RAILROAD TRACK AND 1  
AD5722 FOOT EAST OF A METAL WITNESS POST.  
AD5722  
AD5722 TO REACH THE AZIMUTH MARK AND BENCH MARK C 35 FROM THE  
AD5722 STATION, GO SOUTH ON NORTH SWINTON AVENUE FOR 0.1 MILE TO A Y  
AD5722 FORK. TAKE THE LEFT FORK, CROSS THE RAILROAD TRACK AND GO  
AD5722 SOUTH ON OLD DIXIE HIGHWAY FOR 0.05 MILE TO THE MARKS ON THE  
AD5722 RIGHT AS DESCRIBED.  
AD5722  
AD5722 HEIGHT OF LIGHT ABOVE STATION MARK 30 METERS.  
AD5722  
AD5722 STATION RECOVERY (1970)  
AD5722  
AD5722 RECOVERY NOTE BY NATIONAL GEODETIC SURVEY 1970  
AD5722 1.2 MI SOUTH FROM DELRAY BEACH.  
AD5722 THE MARK IS 1.0 FT BELOW GROUND.  
AD5722 0.05 MILE EAST ALONG NORTHWEST FIRST STREET FROM THE DELRAY BEACH CITY  
AD5722 HALL BUILDING, THENCE 1.15 MILES SOUTH ALONG NORTH SWINTON AVENUE TO  
AD5722 SOUTHEAST TENTH STREET, 89.0 FEET NORTH-NORTHEAST OF A FIRE HYDRANT,  
AD5722 80.5 FEET WEST OF THE WEST RAIL OF RAILROAD TRACK, 51.5 FEET NORTHWEST  
AD5722 OF THE NORTHWEST CORNER OF FENCE AROUND PUMP, 47.0 FEET NORTH OF  
AD5722 THE NORTHEAST CORNER OF FENCE AROUND PUMP, AND 22.0 FEET EAST OF THE  
AD5722 EAST EDGE OF A CONCRETE SIDEWALK.  
AD5722 THE MARK IS 1.5 FT W FROM A WITNESS POST.  
AD5722  
AD5722 STATION RECOVERY (1971)  
AD5722  
AD5722 RECOVERY NOTE BY NATIONAL GEODETIC SURVEY 1971 (WHS)  
AD5722 STATION MARK RECOVERED IN GOOD CONDITION. THE 1934 STATION  
AD5722 MARK AND SEVERAL REFERENCE MARKS EXIST BUT WERE NOT VERIFIED AT  
AD5722 THIS TIME. THE 1970 DESCRIPTION IS ADEQUATE.  
AD5722  
AD5722 STATION RECOVERY (1982)  
AD5722  
AD5722 RECOVERY NOTE BY NATIONAL GEODETIC SURVEY 1982 (CLN)  
AD5722 THE STATION MARK, AZIMUTH MARK (RM 2), REFERENCE MARK 7 AND STATION  
AD5722 DELRAY SOUTH BASE RESET WERE RECOVERED AND FOUND IN GOOD CONDITION.  
AD5722 THE STATION IS A REFERENCE MARK. SET IN A ROUND CONCRETE MONUMENT.  
AD5722 REFERENCE MARK 5 WAS FOUND DESTROYED WITH THE DISK MISSING. THE AREA  
AD5722 HAS CHANGED. REFERENCE MARKS 8 AND 9 WERE ESTABLISHED DUE TO ALL  
AD5722 MARKS BEING UNDERGROUND. DUE TO ALL CHANGES, A COMPLETE NEW  
AD5722 DESCRIPTION FOLLOWS. THE STATION IS LOCATED ABOUT 6.4 KM (3.95 MI)  
AD5722 NORTH OF BOCA RATON, 1.6 KM (1.00 MI) SOUTH OF THE CENTER OF DELRAY  
AD5722 BEACH, 0.8 KM (0.50 MI) WEST OF US HIGHWAY 1 AND ON PROPERTY OF THE  
AD5722 CITY OF DELRAY BEACH. TO REACH THE STATION FROM DELRAY BEACH CITY  
AD5722 HALL, GO EAST ON NORTHWEST FIRST STRET FOR .08 KM (0.05 MI) TO NORTH  
AD5722 SWINTON AVENUE. TURN RIGHT AND GO SOUTH ON NORTH SWINTON AVENUE FOR  
AD5722 1.84 KM (1.15 MI) TO THE STATION ON LEFT AT FENCE IN PUMPING  
AD5722 STRUCTURE. THE STATION IS A STANDARD CGS REFERENCE DISK  
AD5722 STAMPED--DELRAY S BASE NO 6 1934 1970--, SET INTO THE TOP OF A ROUND  
AD5722 CONCRETE MONUMENT, 30 CM (12 IN) IN DIAMETER, RECESSED 12 CM (4 IN)  
AD5722 BELOW THE GROUND, THE STATION IS LOCATED 27.13 METERS (89.01 FT) NORTH  
AD5722 NORTHWEST OF A FIRE HYDRANT, 24.54 METERS (80.51 FT) WEST OF THE WEST  
AD5722 RAIL OF RAILROAD TRACK, 14.33 METERS (47.01 FT) NORTH OF THE NORTHEAST  
AD5722 CORNER OF FENCE AROUND PUMP, 15.70 METERS (51.51 FT) NORTHWEST OF THE  
AD5722 NORTHWEST CORNER OF FENCE AROUND PUMP, 6.71 METERS (22.01 FT) EAST OF  
AD5722 THE EAST EDGE OF SIDEWALK, .46 METERS (1.51 FT) WEST OF A METAL  
AD5722 WITNESS POST. REFERENCE MARK NO 7 IS A STANDARD CGS DISK  
AD5722 STAMPED--DELRAY S BASE NO 7 1934 1970--, SET INTO THE TOP OF A ROUND  
AD5722 CONCRETE MONUMENT, 30 CM (12 IN) IN DIAMETER, RECESSED 31 CM (12 IN)  
AD5722 BELOW THE GROUND, THE STATION IS LOCATED 28.65 METERS (94.00 FT) WEST  
AD5722 OF THE WEST RAIL OF RAILROAD TRACK, 51.51 METERS (169.00 FT) EAST

## DATASHEETS

AD5722 'NORTHEAST OF THE FIRE HYDRANT, 15.24 METERS (50.00 FT) EAST OF THE  
AD5722 'CENTER OF SOUTH SWINTON AVENUE, 5.79 METERS (19.00 FT) EAST OF THE  
AD5722 'EAST EDGE OF THE SIDEWALK, .15 METERS (0.49 FT) LOWER THAN THE  
AD5722 'STATION. REFERENCE MARK NO 8 IS A STANDARD CGS DISK STAMPED--DELRAY S  
AD5722 'BASE 1934 NO 8 1982-- , SET INTO THE TOP AND CENTER OF A CONCRETE  
AD5722 'SIDEWALK ON THE EAST SIDE OF NORTH SWINTON AVENUE. THE STATION IS  
AD5722 'LOCATED 23.47 METERS (77.00 FT) NORTH OF THE FIRST HYDRANT, 8.69  
AD5722 'METERS (28.51 FT) EAST OF THE CENTER OF SOUTH SWINTON AVENUE, 8.53  
AD5722 'METERS (27.99 FT) SOUTHWEST OF THE SOUTHWEST CORNER OF FENCE AROUND  
AD5722 'PUMP AND .31 METERS (1.02 FT) HIGHER THAN THE STATION. REFERENCE MARK  
AD5722 'NO 9 IS A STANDARD CGS DISK STAMPED--DELRAY S BASE 1934 NO 9 1982-- ,  
AD5722 'SET INTO THE TOP AND CENTER OF A CONCRETE SIDEWALK ON THE EAST SIDE OF  
AD5722 'NORTH SWINTON AVENUE. THE STATION IS LOCATED 30.18 METERS (99.02 FT)  
AD5722 'NORTH OF THE FIRE HYDRANT, 8.69 METERS (28.51 FT) EAST OF THE CENTER  
AD5722 'OF SOUTH SWINTON AVENUE, 19.36 METERS (63.52 FT) NORTHWEST OF THE  
AD5722 'NORTHWEST CORNER OF FENCE AROUND PUMP AND .31 M (1 FT) HIGHER THAN THE  
AD5722 'STATION. AZIMUTH MARK NO 1 IS A STANDARD CGS REFERENCE DISK  
AD5722 'STAMPED--DELRAY SOUTH BASE NO 2 1933-- , SET INTO THE TOP OF A SQUARE  
AD5722 'CONCRETE MONUMENT 30 CM (12 IN) ON SIDE, PROJECTING 30 CM (12 IN)  
AD5722 'ABOVE THE GROUND. THE STATION IS LOCATED 9.14 METERS (29.99 FT) WEST  
AD5722 'OF THE CENTER OF OLD DIXIE HIGHWAY, 8.53 METERS (27.99 FT) EAST OF THE  
AD5722 'EAST RAIL OF RAILROAD TRACK, .46 METERS (1.51 FT) NORTHEAST OF A METAL  
AD5722 'WITNESS POST. TO REACH THE AZIMUTH MARK FROM STATION, FOLLOW NORTH  
AD5722 'SWINTON AVENUE SOUTH. 16 KM (9.95 MI) TO Y FORK. KEEP LEFT AND GO  
AD5722 'SOUTHEAST AND SOUTH .08 KM (0.05 MI) TO MARK ON RIGHT.

AD5722  
AD5722 STATION RECOVERY (1990)

AD5722 RECOVERY NOTE BY US POWER SQUADRON 1990 (BJS)  
AD5722 RECOVERED IN GOOD CONDITION.

AD5722  
AD5722 STATION RECOVERY (1991)

AD5722 RECOVERY NOTE BY NATIONAL GEODETIC SURVEY 1991  
AD5722 IN DELRAY BEACH, AT THE INTERSECTION OF SOUTHEAST 10TH STREET AND  
AD5722 SWINTON AVENUE, 50.0 M (164.0 FT) NORTH OF THE STREET CENTER, 24.4 M  
AD5722 (80.1 FT) WEST OF THE NEAR RAIL OF THE FLORIDA EAST COAST RAILROAD,  
AD5722 14.2 M (46.6 FT) NORTH OF THE NORTHWEST CORNER OF A CHAIN-LINK FENCE  
AD5722 SURROUNDING PUMP STATION 17, 12.5 M (41.0 FT) EAST OF AND LEVEL WITH  
AD5722 THE AVENUE CENTERLINE, 0.5 M (1.6 FT) WEST OF A WITNESS POST, AND THE  
AD5722 MONUMENT IS FLUSH WITH THE GROUND SURFACE.

AD5722  
AD5722 STATION RECOVERY (1991)

AD5722 RECOVERY NOTE BY US POWER SQUADRON 1991 (BJS)  
AD5722 RECOVERED IN GOOD CONDITION.

AD5722  
AD5722 STATION RECOVERY (1992)

AD5722 RECOVERY NOTE BY PALM BEACH COUNTY FLORIDA 1992  
AD5722 RECOVERED IN GOOD CONDITION.

AD5722  
AD5722 STATION RECOVERY (2001)

AD5722 RECOVERY NOTE BY INDIVIDUAL CONTRIBUTORS 2001 (WRV)  
AD5722 WITNESS POST EXISTS, BUT MARK APPEARS TO BE HEAVILY BURIED IF MARK  
AD5722 STILL EXISTS.

AD5722  
AD5722 STATION RECOVERY (2003)

AD5722 RECOVERY NOTE BY US POWER SQUADRON 2003 (AAS)  
AD5722 AREA LANDSCAPED AND MARK IS APPROX 12 INCHES BELOW GRADE

AD5722  
AD5722 STATION RECOVERY (2004)

AD5722 RECOVERY NOTE BY US POWER SQUADRON 2004 (AAS)  
AD5722 RECOVERED IN GOOD CONDITION.

\*\*\* retrieval complete.  
Elapsed Time = 00:00:01



**PB-693**



**Nick Miller, Inc.**  
**Date of Photo: May 5, 2005**  
**View: Looking at the well facing south**



**PB-693**



**Nick Miller, Inc.**  
**Date of Photo: May 5, 2005**  
**View: Close-up of the well showing the contractor's markings**



**PB-693**



**Nick Miller, Inc.**

**Date of Photo: May 5, 2005**

**View: Looking at the benchmark facing north**

**PB-693**



**Nick Miller, Inc.**  
**Date of Photo: May 5, 2005**  
**View: A top view of the benchmark**



1078

SFWMMD

SETTING CONC. MONUMENTS  
AT MONITORING WELL SITE

PB 693

SET POURED-IN-PLACE CONC. MON. BY MONITORING WELL  
SET MAGNET 1' <sup>AT</sup> <sub>SOUTH</sub> OF CONC. MON.

- SET CONC. MON. 7.0' EAST OF MONITORING WELL PB 693
- " " " 38.0' NE OF SPEED LIMIT SIGN (25)
- " " " 17.8' WEST OF ♀ NORTH PALMWAY
- " " " 16.65' SOUTH OF PALM TREE

STAMPED: PB 693  
2005

## COORDINATES ON MONITORING WELL PB 693

STATE PLANE 1983	NAD 84
N. 251054.857 m	N. $26^{\circ} 35' 47.58107''$
E. 294475.748 m	W. $080^{\circ} 03' 05.33627''$

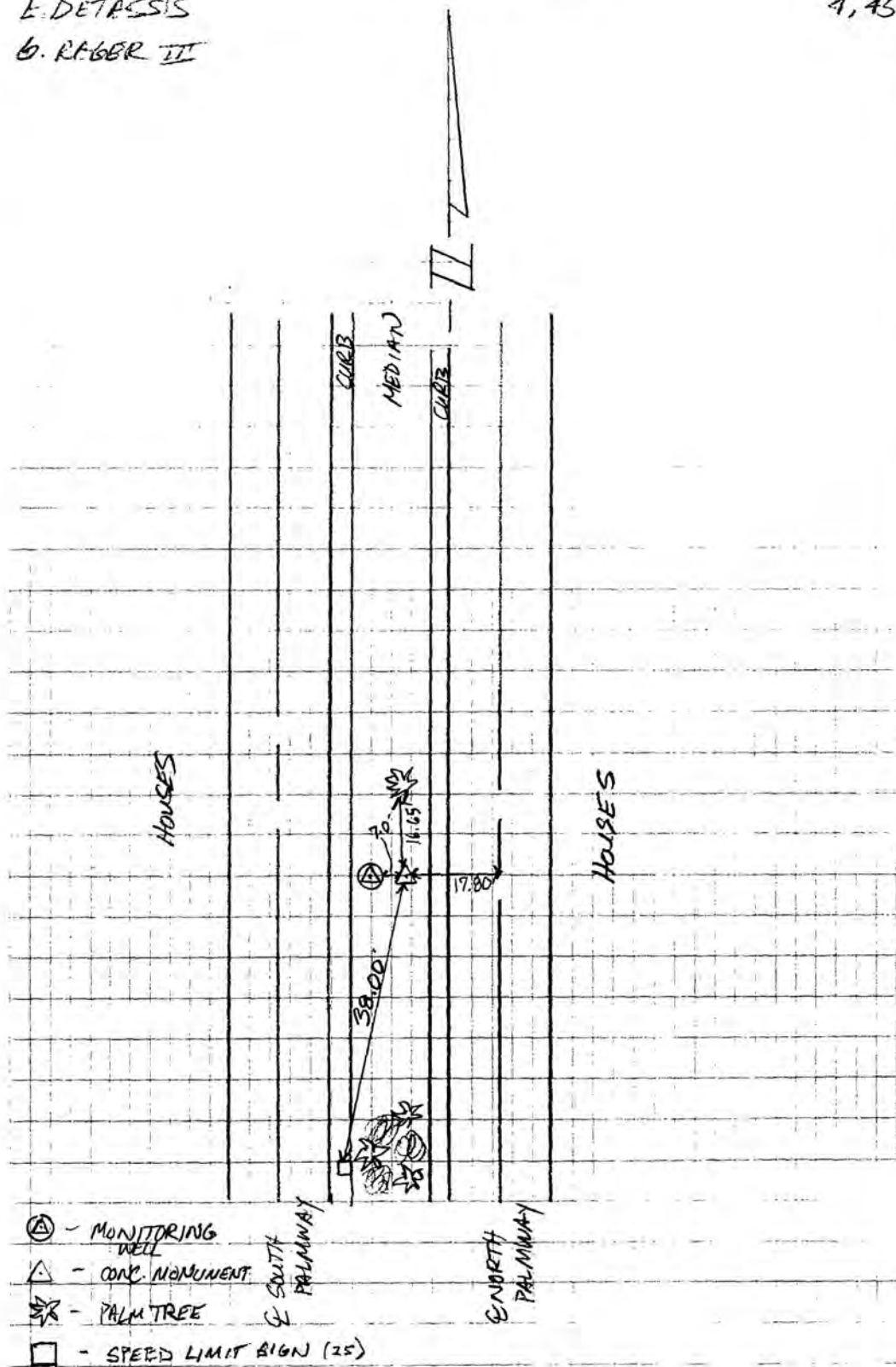
## COORDINATES ON CONC. MONUMENT

STATE PLANE 1983	NAD 84
N. 251054.977 m	N. $26^{\circ} 35' 47.58524''$
E. 294478.775 m	W. $080^{\circ} 03' 05.24159''$

THRU. MAY 5, 2005

E. DETASSIS  
G. RIGER III

4, 45







SOUTH FLORIDA WATER MANAGEMENT DISTRICT

Rev. 4/01

COUNTY	PALM BEACH		PROJECT	Hydrology – Palm Beach County Wells		DESIGNATION	PB 693 2005	
SECTION	34		TOWNSHIP	44 SOUTH		RANGE	43 EAST	
GEOGRAPHIC INDEX OF QUAD								
Established by <u>Nick Miller Inc.</u> Recovered by				NAME OF QUADRANGLE LAKE WORTH				
SURVEYOR <u>Stephen M. Gordon</u> DATE <u>5/5/2005</u>				FIELD BOOK <u>4</u> PAGE <u>45</u>				
HORIZONTAL DATUM: 1927 <input checked="" type="radio"/> 1983 Other _____ (circle one) ZONE <input checked="" type="radio"/> E or W								
VERTICAL DATUM: MSL 1929 <input checked="" type="radio"/> 1988 Other _____ (circle one)								
CONTROL ACCURACY: HORIZONTAL 1 2 3 <input checked="" type="radio"/> SUB-METER (circle one) VERTICAL 1 2 <input checked="" type="radio"/> 3								
STATE PLANE COORDINATES			N	823,669 ft		E	966,135 ft	
						EL. 5.54 ft		
LATITUDE N 26.59655°			LONGITUDE W 80.05148°					
<b>DESCRIPTION</b>								
To Reach:  INTERSECTION OF 6 <sup>TH</sup> AVE. & US HWY 1. GO EAST ON 6 <sup>TH</sup> AVE. FOR 0.40 MILE TO SOUTH PALMWAY. GO SOUTH ON SOUTH PALMWAY FOR 0.8 MILE. CONCRETE MONUMNET WILL BE ON LEFT. 7.0 FEET EAST OF MONITORING WELL PB 693. 38.0 FEET NORTHEAST OF SPEED LIMIT SIGN. 17.8 FEET WEST OF CENTERLINE NORTH PALMWAY. 16.65 FEET SOUTH OF PALM TREE. MAGNET 1 FOOT SOUTH OF CONCRETE MONUMENT.								
Notable Land marks:								



SOUTH FLORIDA WATER MANAGEMENT DISTRICT

Rev. 4/01

SKETCH

1078

SFWMD

SETTING CONC. MONUMENTS  
AT MONITORING WELL SITE

PB 693

SET POURED-IN-PLACE CONC. MON. BY MONITORING WELL  
SET MAGNET 1' <sub>SOUTH</sub> OF CONC. MON.

- SET CONC. MON. 7.0' EAST OF MONITORING WELL PB 693
- " " " 32.0' NE OF SPEED LIMIT SIGN (25)
- " " " 17.3' WEST OF E NORTH PALMWAY
- " " " 16.65' SOUTH OF PALM TREE

STAMPED: PB 693  
2005

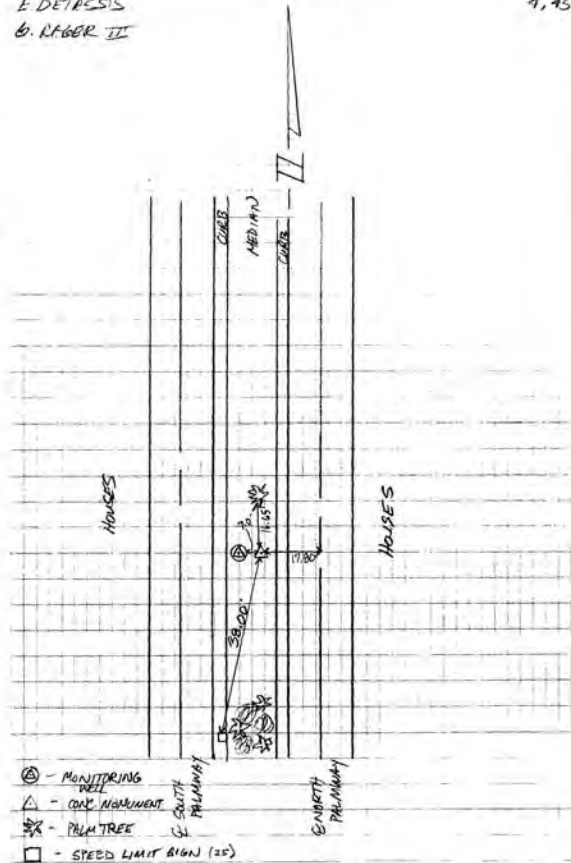
COORDINATES ON MONITORING WELL PB 693  
STATE PLANE 1983 WGS 84  
N. 251054.857 m N. 26° 35' 47.58107 m  
E. 294475.748 m W. 080° 03' 05."33627

COORDINATES ON CONC. MONUMENT  
STATE PLANE 1983 WGS 84  
N. 251054.977 m N. 26° 35' 47.58524 m  
E. 294478.775 m W. 080° 03' 05."24159

THRU. MAY 5, 2005

E. DETROSSIS  
G. REGER II

4.45



-\*- FIELD ABSTRACT -\*-

050509-050510 HGZ L26803 8.0 MM ORDER 2 CLASS 2 PAGE 1  
 SOUTH FLORIDA WATER MANAGEMENT DISTRICT  
 PALM BEACH COUNTY MONITORING WELLS  
 ESTABLISH BENCH MARK NEAR MONITORING WELL PB-888 AND PB-889

FROM	TO	START	F/B	DI ST TOTAL (KM)	ELEV DI FF (MT)	-(F+B) TOTAL (MM)	MEAN DI FF FLD ELEV (MT)	I C
0203 K 402							4.78000	
0203 K 402		5090810	F	1.68	-2.60874 *	-0.92	-2.60920	1
0202 PB 888		5100845	B	1.69	2.60967 *			1
				1.68		-0.92	2.17080	
0202 PB 888		5101100	F	1.51	2.37815 *	0.00	2.37815	1
0206 P 233		SL 1		3.19		-0.92	4.54895	
0206 P 233		5101420	F	1.46	-2.85638 *	0.00	-2.85638	1
0204 PB 693		SL 1		4.64		-0.92	1.69257	
0202 PB 888		5091005	F	1.26	-0.48147 *	0.00	-0.48147	1
0204 PB 693				2.93		-0.92	1.68933	
0204 PB 693		5091115	F	1.42	0.43530 *	-1.14	0.43473	1
0205 J 402		5091415	B	1.43	-0.43416 *			1
				4.35		-2.07	2.12406♀	

ELEVATION REJECTION AND ERROR CODES

- C - section elevation difference was rejected for cause  
ie. \*43\* record rejection code set to "F"
- R - section elevation difference was rejected by Halperin rejection algorithm
- @ - section elevation difference does not include refraction correction
- \* - section elevation difference does not include rod correction

♀

INSTRUMENT CODE	INSTRUMENT	RODS
1	243 - 331132	396 - 111      396 - 222

♀  
LEVEL LINE SECTION RUNNING TREE

FROM	TO	N. LATITUDE	W. LONGITUDE	FIELD DISTANCE	VS. COMPUTED
0203		263656	0800334	0.00	0.00
0202 (0206 0204)		263628	0800303	1.68	1.22
0204		263615	0800331	1.51	0.87 **
0205♀		263546	0800305	1.46	1.15
0202	0204	263546	0800305	1.26	1.29
0204	0205	263504	0800307	1.42	1.29♀

SECTION FROM TO ERROR MESSAGES

0202 0206 \*\*\* Field distance exceeds computed distance by more than 0.50 KM!

# The NGS Data Sheet

See file [dsdata.txt](#) for more information about the datasheet.

```

DATABASE = Sybase ,PROGRAM = datasheet, VERSION = 7.23
1 National Geodetic Survey, Retrieval Date = AUGUST 31, 2005
AD8035 *****
AD8035 DESIGNATION - K 402
AD8035 PID - AD8035
AD8035 STATE/COUNTY- FL/PALM BEACH
AD8035 USGS QUAD - LAKE WORTH (1983)
AD8035
AD8035 *CURRENT SURVEY CONTROL
AD8035
AD8035 *-----*
AD8035 * NAD 83(1986)- 26 36 56. (N) 080 03 34. (W) SCALED
AD8035 * NAVD 88 - 4.780 (meters) 15.68 (feet) ADJUSTED
AD8035 *-----*
AD8035 GEOID HEIGHT- -26.27 (meters) GEOID03
AD8035 DYNAMIC HT - 4.773 (meters) 15.66 (feet) COMP
AD8035 MODELED GRAV- 979,112.3 (mgal) NAVD 88
AD8035
AD8035 VERT ORDER - FIRST CLASS II
AD8035
AD8035.The horizontal coordinates were scaled from a topographic map and have
AD8035.an estimated accuracy of +/- 6 seconds.
AD8035
AD8035.The orthometric height was determined by differential leveling
AD8035.and adjusted by the National Geodetic Survey in June 2002.
AD8035.WARNING-Repeat measurements at this control monument indicate possible
AD8035.vertical movement.
AD8035
AD8035.The geoid height was determined by GEOID03.
AD8035
AD8035.The dynamic height is computed by dividing the NAVD 88
AD8035.geopotential number by the normal gravity value computed on the
AD8035.Geodetic Reference System of 1980 (GRS 80) ellipsoid at 45
AD8035.degrees latitude (g = 980.6199 gals.).
AD8035
AD8035.The modeled gravity was interpolated from observed gravity values.
AD8035
AD8035; North East Units Estimated Accuracy
AD8035;SPC FL E - 253,150. 293,670. MT (+/- 180 meters Scaled)
AD8035
AD8035 SUPERSEDED SURVEY CONTROL
AD8035
AD8035 NAVD 88 (05/20/94) 4.785 (m) 15.70 (f) UNKNOWN 1 2
AD8035 NGVD 29 (09/01/92) 5.248 (m) 17.22 (f) ADJUSTED 1 2
AD8035
AD8035.Superseded values are not recommended for survey control.
AD8035.NGS no longer adjusts projects to the NAD 27 or NGVD 29 datums.
AD8035.See file dsdata.txt to determine how the superseded data were derived.
AD8035
AD8035_U.S. NATIONAL GRID SPATIAL ADDRESS: 17RNK936442(NAD 83)
AD8035_MARKER: F = FLANGE-ENCASED ROD
AD8035_SETTING: 49 = STAINLESS STEEL ROD W/O SLEEVE (10 FT.+)
AD8035_SP_SET: STAINLESS STEEL ROD
AD8035_STAMPING: K 402 1991
AD8035_MARK LOGO: NGS
AD8035_PROJECTION: FLUSH
AD8035_MAGNETIC: N = NO MAGNETIC MATERIAL
AD8035_STABILITY: B = PROBABLY HOLD POSITION/ELEVATION WELL
AD8035_SATELLITE: THE SITE LOCATION WAS REPORTED AS SUITABLE FOR
AD8035+SATELLITE: SATELLITE OBSERVATIONS - January 27, 2005
AD8035_ROD/PIPE-DEPTH: 13.2 meters
AD8035
AD8035 HISTORY - Date Condition Report By
AD8035 HISTORY - 1991 MONUMENTED NGS
AD8035 HISTORY - 20001206 GOOD USPSQD
AD8035 HISTORY - 20011221 GOOD USPSQD
AD8035 HISTORY - 20020222 GOOD FLDEP
AD8035 HISTORY - 20040127 GOOD USPSQD
AD8035 HISTORY - 20050127 GOOD USPSQD
AD8035

```

AD8035 STATION DESCRIPTION  
AD8035  
AD8035 DESCRIBED BY NATIONAL GEODETIC SURVEY 1991  
AD8035 IN LAKE WORTH, AT THE INTERSECTION OF THE FLORIDA EAST COAST RAILROAD  
AD8035 AND LAKE AVENUE, 20.5 M (67.3 FT) SOUTH OF AND LEVEL WITH THE AVENUE  
AD8035 CENTER, 9.1 M (29.9 FT) EAST OF THE NEAR RAIL, 6.9 M (22.6 FT) WEST  
AD8035 OF THE CENTER OF RAILROAD AVENUE, AND 0.3 M (1.0 FT) SOUTH OF A  
AD8035 WITNESS POST. NOTE--ACCESS TO THE DATUM POINT IS THROUGH A 5-INCH  
AD8035 LOGO CAP.

AD8035  
AD8035 STATION RECOVERY (2000)  
AD8035  
AD8035 RECOVERY NOTE BY US POWER SQUADRON 2000 (AAS)  
AD8035 RECOVERED IN GOOD CONDITION.

AD8035  
AD8035 STATION RECOVERY (2001)  
AD8035  
AD8035 RECOVERY NOTE BY US POWER SQUADRON 2001 (AAS)  
AD8035 RECOVERED IN GOOD CONDITION.

AD8035  
AD8035 STATION RECOVERY (2002)  
AD8035  
AD8035 RECOVERY NOTE BY FL DEPT OF ENV PRO 2002 (JLM)  
AD8035 RECOVERED AS DESCRIBED.

AD8035  
AD8035  
AD8035  
AD8035  
AD8035 STATION RECOVERY (2004)  
AD8035

AD8035 RECOVERY NOTE BY US POWER SQUADRON 2004 (AAS)  
AD8035 RECOVERED IN GOOD CONDITION.  
AD8035  
AD8035 STATION RECOVERY (2005)

AD8035  
AD8035 RECOVERY NOTE BY US POWER SQUADRON 2005 (AAS)  
AD8035 RECOVERED IN GOOD CONDITION.

\*\*\* retrieval complete.  
Elapsed Time = 00:00:00



## The NGS Data Sheet

See file [dsdata.txt](#) for more information about the datasheet.

DATABASE = Sybase ,PROGRAM = datasheet, VERSION = 7.23

1 National Geodetic Survey, Retrieval Date = AUGUST 31, 2005

AD2758 \*\*\*\*\*

AD2758 DESIGNATION - P 233  
AD2758 PID - AD2758  
AD2758 STATE/COUNTY- FL/PALM BEACH  
AD2758 USGS QUAD - LAKE WORTH (1983)

AD2758  
AD2758 \*CURRENT SURVEY CONTROL

AD2758*	NAD 83(1986)-	26 36 15.	(N)	080 03 31.	(W)	SCALED
AD2758*	NAVD 88	-	4.565	(meters)	14.98	(feet) ADJUSTED

AD2758	GEOID HEIGHT-	-26.25	(meters)			GEOID03
AD2758	DYNAMIC HT -	4.558	(meters)	14.95	(feet)	COMP
AD2758	MODELED GRAV-	979,111.3	(mgal)			NAVD 88

AD2758 VERT ORDER - FIRST CLASS II

AD2758.The horizontal coordinates were scaled from a topographic map and have  
AD2758.an estimated accuracy of +/- 6 seconds.

AD2758.The orthometric height was determined by differential leveling  
AD2758.and adjusted by the National Geodetic Survey in May 1994.

AD2758.The geoid height was determined by GEOID03.

AD2758.The dynamic height is computed by dividing the NAVD 88  
AD2758.geopotential number by the normal gravity value computed on the  
AD2758.Geodetic Reference System of 1980 (GRS 80) ellipsoid at 45  
AD2758.degrees latitude (g = 980.6199 gals.).

AD2758.The modeled gravity was interpolated from observed gravity values.

AD2758;		North	East	Units	Estimated Accuracy
AD2758;SPC FL E	-	251,890.	293,760.	MT	(+/- 180 meters Scaled)

AD2758 SUPERSEDED SURVEY CONTROL

AD2758	NAVD 88 (06/15/91)	4.557	(m)	14.95	(f)	UNKNOWN	1 2
AD2758	NGVD 29 (09/01/92)	5.029	(m)	16.50	(f)	ADJUSTED	1 2

AD2758.Superseded values are not recommended for survey control.

AD2758.NGS no longer adjusts projects to the NAD 27 or NGVD 29 datums.

AD2758.[See file dsdata.txt](#) to determine how the superseded data were derived.

AD2758\_U.S. NATIONAL GRID SPATIAL ADDRESS: 17RNK937429(NAD 83)

AD2758\_MARKER: DB = BENCH MARK DISK

AD2758\_SETTING: 7 = SET IN TOP OF CONCRETE MONUMENT

AD2758\_SP\_SET: CONCRETE POST

AD2758\_STAMPING: P 233 1965

AD2758\_MARK LOGO: CGS

AD2758\_STABILITY: C = MAY HOLD, BUT OF TYPE COMMONLY SUBJECT TO

AD2758+STABILITY: SURFACE MOTION

AD2758\_SATELLITE: THE SITE LOCATION WAS REPORTED AS SUITABLE FOR

AD2758+SATELLITE: SATELLITE OBSERVATIONS - January 26, 2005

AD2758	HISTORY	- Date	Condition	Report By
AD2758	HISTORY	- 1965	MONUMENTED	CGS
AD2758	HISTORY	- 1973	GOOD	NGS
AD2758	HISTORY	- 1985	GOOD	USPSQD
AD2758	HISTORY	- 1987	GOOD	USPSQD
AD2758	HISTORY	- 1987	GOOD	USPSQD
AD2758	HISTORY	- 1988	GOOD	USPSQD
AD2758	HISTORY	- 19910114	GOOD	NGS
AD2758	HISTORY	- 20011221	GOOD	USPSQD
AD2758	HISTORY	- 20030115	GOOD	USPSQD
AD2758	HISTORY	- 20040126	GOOD	USPSQD
AD2758	HISTORY	- 20050126	GOOD	USPSQD

AD2758  
AD2758 STATION DESCRIPTION  
AD2758  
AD2758 DESCRIBED BY COAST AND GEODETIC SURVEY 1965  
AD2758 AT LAKE WORTH.  
AD2758 AT LAKE WORTH, IN SECTION 27, R 43 E, T 44 S, ABOUT 0.65 MILE  
AD2758 SOUTH ALONG THE FLORIDA EAST COAST RAILWAY FROM THE STATION,  
AD2758 ABOUT 0.15 MILE NORTH OF MILEPOST 307, 144.0 FEET NORTHEAST OF  
AD2758 THE CENTER OF THE CROSSING OF 10TH AVENUE SOUTH, 156.0 FEET  
AD2758 NORTH OF THE CENTER LINE OF THE AVENUE, 33.5 FEET EAST OF THE  
AD2758 EAST RAIL OF THE NORTHBOUND MAIN TRACK, 43.5 FEET WEST OF THE  
AD2758 CENTER LINE OF SOUTH H STREET, 1.5 FEET WEST OF THE WEST CURB OF  
AD2758 A SMALL BLACK TOP AREA WEST OF SOUTH H STREET, 1.5 FEET SOUTH OF  
AD2758 A METAL WITNESS POST, ABOUT 2 FEET BELOW THE LEVEL OF THE TRACK  
AD2758 AND SET IN THE TOP OF A CONCRETE POST PROJECTING 0.3 FOOT.  
AD2758 NOTE-- THE RAILWAY STATION NO LONGER EXISTS. THE METAL WITNESS  
AD2758 POST HAS BEEN REMOVED.  
AD2758  
AD2758 STATION RECOVERY (1973)  
AD2758  
AD2758 RECOVERY NOTE BY NATIONAL GEODETIC SURVEY 1973  
AD2758 RECOVERED IN GOOD CONDITION.  
AD2758  
AD2758 STATION RECOVERY (1985)  
AD2758  
AD2758 RECOVERY NOTE BY US POWER SQUADRON 1985 (BJS)  
AD2758 RECOVERED IN GOOD CONDITION.  
AD2758  
AD2758 STATION RECOVERY (1987)  
AD2758  
AD2758 RECOVERY NOTE BY US POWER SQUADRON 1987 (RG)  
AD2758 RECOVERED IN GOOD CONDITION.  
AD2758  
AD2758 STATION RECOVERY (1987)  
AD2758  
AD2758 RECOVERY NOTE BY US POWER SQUADRON 1987 (BJS)  
AD2758 RECOVERED IN GOOD CONDITION.  
AD2758  
AD2758 STATION RECOVERY (1988)  
AD2758  
AD2758 RECOVERY NOTE BY US POWER SQUADRON 1988 (BJS)  
AD2758 RECOVERED IN GOOD CONDITION.  
AD2758  
AD2758 STATION RECOVERY (1991)  
AD2758  
AD2758 RECOVERY NOTE BY NATIONAL GEODETIC SURVEY 1991  
AD2758 IN LAKE WORTH, AT THE INTERSECTION OF 10TH AVENUE SOUTH AND THE  
AD2758 FLORIDA EAST COAST RAILROAD, 47.2 M (154.9 FT) NORTHWEST OF THE  
AD2758 AVENUE CENTER, 13.2 M (43.3 FT) WEST OF AND LEVEL WITH THE CENTER OF  
AD2758 SOUTH H STREET, 10.2 M (33.5 FT) NORTHEAST OF THE NEAR RAIL, 0.5 M  
AD2758 (1.6 FT) SOUTHWEST OF A CURB, AND 0.3 M (1.0 FT) NORTHEAST OF A  
AD2758 WITNESS POST, AND THE MONUMENT PROJECTS 0.1 M (0.3 FT) ABOVE THE  
AD2758 GROUND SURFACE. NOTE--THE MONUMENT HAS BEEN HIT AND THE WEST SIDE IS  
AD2758 BROKEN OFF, BUT IS SOLID IN PLACE.  
AD2758  
AD2758 STATION RECOVERY (2001)  
AD2758  
AD2758 RECOVERY NOTE BY US POWER SQUADRON 2001 (AAS)  
AD2758 RECOVERED IN GOOD CONDITION.  
AD2758  
AD2758 STATION RECOVERY (2003)  
AD2758  
AD2758 RECOVERY NOTE BY US POWER SQUADRON 2003 (AAS)  
AD2758 RECOVERED IN GOOD CONDITION.  
AD2758  
AD2758 STATION RECOVERY (2004)  
AD2758  
AD2758 RECOVERY NOTE BY US POWER SQUADRON 2004 (AAS)  
AD2758 RECOVERED IN GOOD CONDITION.  
AD2758  
AD2758 STATION RECOVERY (2005)  
AD2758  
AD2758 RECOVERY NOTE BY US POWER SQUADRON 2005 (AAS)  
AD2758 RECOVERED IN GOOD CONDITION.

\*\*\* retrieval complete.  
Elapsed Time = 00:00:00

# The NGS Data Sheet

See file [dsdata.txt](#) for more information about the datasheet.

DATABASE = Sybase ,PROGRAM = datasheet, VERSION = 7.23

1 National Geodetic Survey, Retrieval Date = AUGUST 31, 2005

AD8036 \*\*\*\*\*

AD8036 DESIGNATION - J 402

AD8036 PID - AD8036

AD8036 STATE/COUNTY- FL/PALM BEACH

AD8036 USGS QUAD - LAKE WORTH (1983)

AD8036

AD8036 \*CURRENT SURVEY CONTROL

AD8036

AD8036\* NAD 83(1999)- 26 35 04.32181(N) 080 03 07.73169(W) ADJUSTED

AD8036\* NAVD 88 - 2.134 (meters) 7.00 (feet) ADJUSTED

AD8036

AD8036 X - 986,000.633 (meters) COMP

AD8036 Y - -5,621,803.004 (meters) COMP

AD8036 Z - 2,837,113.004 (meters) COMP

AD8036 LAPLACE CORR- -4.73 (seconds) DEFLEC99

AD8036 ELLIP HEIGHT- -24.09 (meters) (12/12/02) GPS OBS

AD8036 GEOID HEIGHT- -26.25 (meters) GEOID03

AD8036 DYNAMIC HT - 2.131 (meters) 6.99 (feet) COMP

AD8036 MODELED GRAV- 979,109.4 (mgal) NAVD 88

AD8036

AD8036 HORZ ORDER - FIRST

AD8036 VERT ORDER - FIRST CLASS II

AD8036 ELLP ORDER - FOURTH CLASS I

AD8036

AD8036.The horizontal coordinates were established by GPS observations

AD8036.and adjusted by the National Geodetic Survey in December 2002.

AD8036

AD8036.The orthometric height was determined by differential leveling

AD8036.and adjusted by the National Geodetic Survey in May 1994.

AD8036

AD8036.The X, Y, and Z were computed from the position and the ellipsoidal ht.

AD8036

AD8036.The Laplace correction was computed from DEFLEC99 derived deflections.

AD8036

AD8036.The ellipsoidal height was determined by GPS observations

AD8036.and is referenced to NAD 83.

AD8036

AD8036.The geoid height was determined by GEOID03.

AD8036

AD8036.The dynamic height is computed by dividing the NAVD 88

AD8036.geopotential number by the normal gravity value computed on the

AD8036.Geodetic Reference System of 1980 (GRS 80) ellipsoid at 45

AD8036.degrees latitude (g = 980.6199 gals.).

AD8036

AD8036.The modeled gravity was interpolated from observed gravity values.

AD8036

AD8036;

	North	East	Units	Scale	Factor	Converg.
AD8036;SPC FL E	- 249,722.529	294,419.293	MT	1.00005120	+0 25	27.2
AD8036;UTM 17	- 2,940,769.307	594,387.077	MT	0.99970999	+0 25	27.2

AD8036

AD8036! - Elev Factor x Scale Factor = Combined Factor

AD8036!SPC FL E - 1.00000378 x 1.00005120 = 1.00005498

AD8036!UTM 17 - 1.00000378 x 0.99970999 = 0.99971377

AD8036

AD8036

AD8036 SUPERSEDED SURVEY CONTROL

AD8036

AD8036 NAVD 88 (12/12/02) 2.13 (m) 7.0 (f) LEVELING 3

AD8036 NGVD 29 (09/01/92) 2.603 (m) 8.54 (f) ADJUSTED 1 2

AD8036

AD8036.Superseded values are not recommended for survey control.

AD8036.NGS no longer adjusts projects to the NAD 27 or NGVD 29 datums.

AD8036.[See file dsdata.txt](#) to determine how the superseded data were derived.

AD8036

AD8036\_U.S. NATIONAL GRID SPATIAL ADDRESS: 17RNK9438740769(NAD 83)

AD8036\_MARKER: F = FLANGE-ENCASED ROD

AD8036\_SETTING: 49 = STAINLESS STEEL ROD W/O SLEEVE (10 FT.+) )

AD8036\_SP\_SET: STAINLESS STEEL ROD

## DATASHEETS

AD8036\_STAMPING: J 402 1991  
 AD8036\_MARK LOGO: NGS  
 AD8036\_PROJECTION: RECESSED 9 CENTIMETERS  
 AD8036\_MAGNETIC: M = MARKER EQUIPPED WITH BAR MAGNET  
 AD8036\_STABILITY: A = MOST RELIABLE AND EXPECTED TO HOLD  
 AD8036+STABILITY: POSITION/ELEVATION WELL  
 AD8036\_SATELLITE: THE SITE LOCATION WAS REPORTED AS SUITABLE FOR  
 AD8036+SATELLITE: SATELLITE OBSERVATIONS - February 10, 2005  
 AD8036\_ROD/PIPE-DEPTH: 8.1 meters

AD8036	HISTORY	- Date	Condition	Report By
AD8036	HISTORY	- 1991	MONUMENTED	NGS
AD8036	HISTORY	- 20020521	GOOD	MAPTEC
AD8036	HISTORY	- 20030919	GOOD	USPSQD
AD8036	HISTORY	- 20050210	GOOD	USPSQD

AD8036  
 AD8036 STATION DESCRIPTION

AD8036 DESCRIBED BY NATIONAL GEODETIC SURVEY 1991  
 AD8036 IN LANTANA, AT THE INTERSECTION OF THE FLORIDA EAST COAST RAILROAD  
 AD8036 AND OCEAN AVENUE, 17.3 M (56.8 FT) WEST OF THE WEST CURB OF U.S.  
 AD8036 HIGHWAY 1, 12.0 M (39.4 FT) NORTH OF AND LEVEL WITH THE AVENUE  
 AD8036 CENTERLINE, 8.7 M (28.5 FT) EAST OF THE NEAR RAIL, 0.4 M (1.3 FT)  
 AD8036 SOUTH OF A RIGHT-OF-WAY POST, AND 0.3 M (1.0 FT) NORTH OF A WITNESS  
 AD8036 POST. NOTE--ACCESS TO THE DATUM POINT IS THROUGH A 5-INCH LOGO CAP.

AD8036  
 AD8036 STATION RECOVERY (2002)

AD8036 RECOVERY NOTE BY MAPTECH INCORPORATED 2002 (CDP)  
 AD8036 RECOVERED AS DESCRIBED.

AD8036  
 AD8036 STATION RECOVERY (2003)

AD8036 RECOVERY NOTE BY US POWER SQUADRON 2003 (AAS)  
 AD8036 RECOVERED IN GOOD CONDITION.

AD8036  
 AD8036 STATION RECOVERY (2005)

AD8036 RECOVERY NOTE BY US POWER SQUADRON 2005 (AAS)  
 AD8036 RECOVERED IN GOOD CONDITION.

\*\*\* retrieval complete.  
 Elapsed Time = 00:00:01