

# KEY CALIPER FLOW LOG

Company SEACOAST UTILITIES

Well

Field HOOD ROAD PLANT

|         |     |    |
|---------|-----|----|
| Country | USA | St |
|---------|-----|----|

Location

DOI: 10.1002/for

---

| Permanent Datum | GL | E |
|-----------------|----|---|
|-----------------|----|---|

| Log Measured From      | GL |
|------------------------|----|
| Drilling Measured From | GL |

|                |                |
|----------------|----------------|
| 8 JANUARY 2008 | 9 JANUARY 2008 |
| 9              |                |

|  |      |    |
|--|------|----|
|  | 1627 | 16 |
|  | 1634 | 16 |

|     |      |    |
|-----|------|----|
| val | 1634 | 16 |
|     | 1050 | 45 |

|         |         |
|---------|---------|
| 14.875" | 14.875" |
| 14.875" | 14.875" |

|      |    |
|------|----|
| NA   | NA |
| 75 C | NA |

|     |    |      |
|-----|----|------|
| pop | NA | 1000 |
|-----|----|------|

|    |      |    |
|----|------|----|
| om | 1655 | 10 |
|    | 1656 | 10 |

| PLANT     | PL   |
|-----------|------|
| EMBOURILL | EMBO |

|                |           |       |
|----------------|-----------|-------|
|                | R.KOTTATH | J.AND |
| Completed Date |           |       |

| Bit | From | To | Size | V |
|-----|------|----|------|---|
|-----|------|----|------|---|

|  |  |  |  |  |
|--|--|--|--|--|
|  |  |  |  |  |
|  |  |  |  |  |
|  |  |  |  |  |
|  |  |  |  |  |
|  |  |  |  |  |

| Size | Wt/Ft |
|------|-------|
|      |       |

|  |  |
|--|--|
|  |  |
|  |  |
|  |  |
|  |  |

|  |  |
|--|--|
|  |  |
|  |  |
|  |  |
|  |  |
|  |  |

[illegible]

|  |  |  |  |  |  |  |
|--|--|--|--|--|--|--|
|  |  |  |  |  |  |  |
|--|--|--|--|--|--|--|

All interpretations are opinions based on inferences from electrical or other measurements and we cannot and do not guarantee the accuracy or correctness of any interpretation, and we shall not, except in the case of gross or willful negligence on our part, be liable or responsible for any loss, costs, damages, or expenses incurred or sustained by anyone resulting from any interpretation made by any of our officers, agents or employees. These interpretations are also subject to our general terms and conditions set out in our current Price Schedule.

## Comments

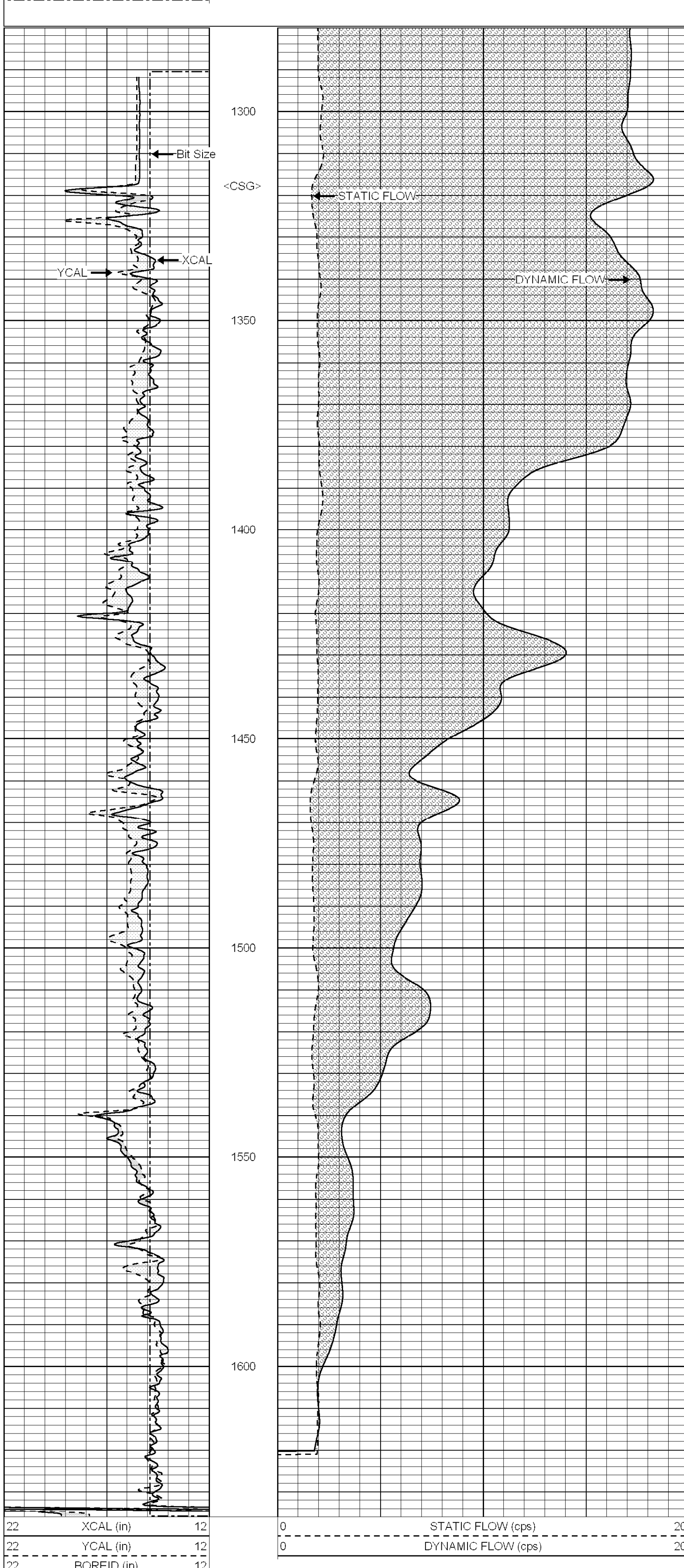
Logs recorded statically and dynamically. While well was running, the flow (Q) was running at about 1700gpm,  $Q \sim 1700$ .



## MAIN PASSES

```
Database File: c:\warrior\data\seacoast\lf-2 folder\final logs folder\lmerge folder\cal-flow.db
Dataset Pathname: plant\F-2/run1/pass1
Presentation Format: awe flow
Dataset Creation: Wed Jan 09 12:40:58 2008
Charted by: Depth in Feet scaled 1:240
```

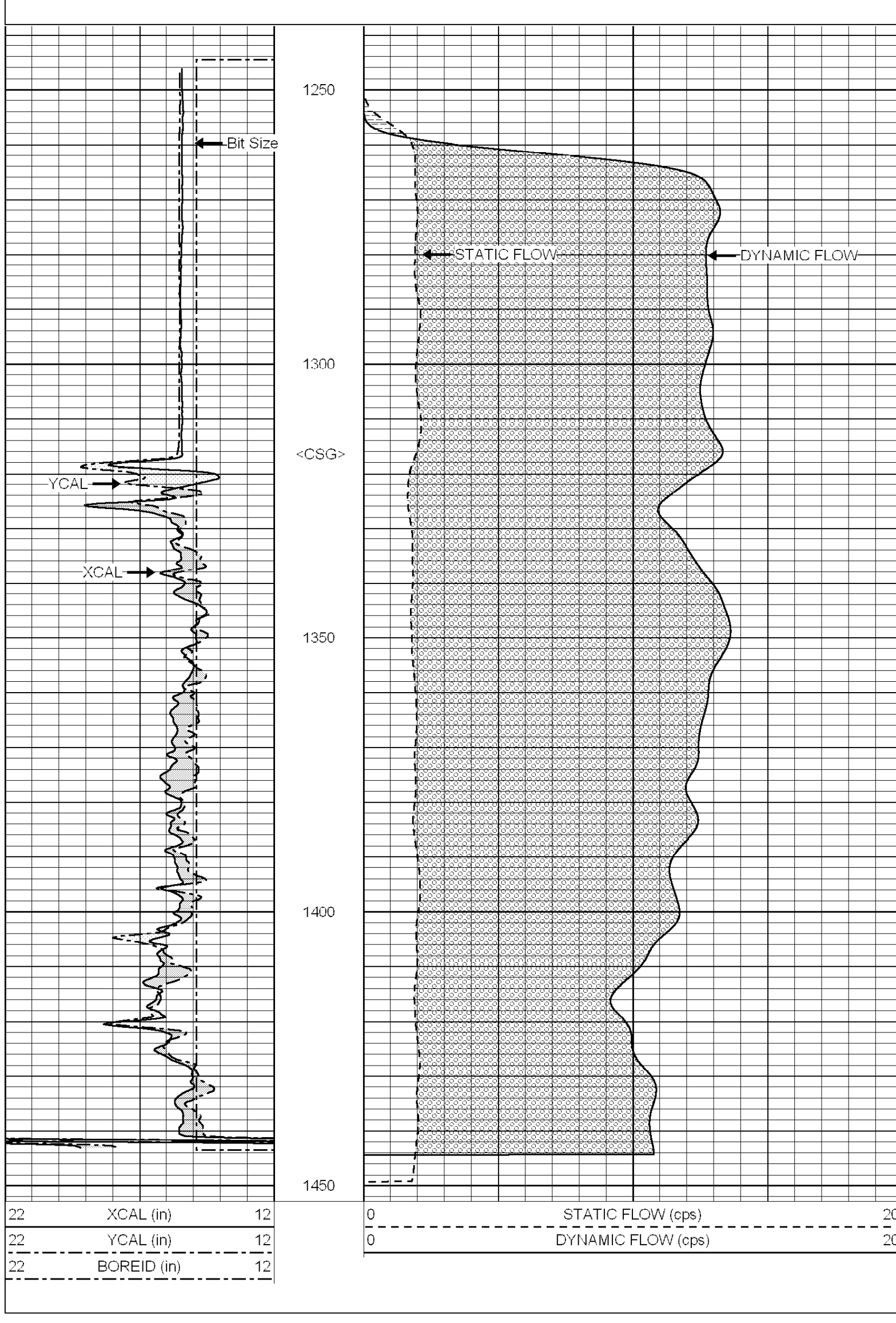
|    |             |    |   |                    |    |
|----|-------------|----|---|--------------------|----|
| 22 | XCAL (in)   | 12 | 0 | STATIC FLOW (cps)  | 20 |
| 22 | YCAL (in)   | 12 | 0 | DYNAMIC FLOW (cps) | 20 |
| 22 | BOREID (in) | 12 |   |                    |    |



## REPEAT PASSES

Database File: c:\warrior\data\seacoast\fw-2 folder\final logs folder\merge folder\cal-flow.d  
Dataset Pathname: plant\F-2\repeats\pass1  
Presentation Format: awe flow  
Dataset Creation: Wed Jan 09 16:23:21 2008  
Charted by: Depth in Feet scaled 1:240

|    |             |    |   |                    |    |
|----|-------------|----|---|--------------------|----|
| 22 | XCAL (in)   | 12 | 0 | STATIC FLOW (cps)  | 20 |
| 22 | YCAL (in)   | 12 | 0 | DYNAMIC FLOW (cps) | 20 |
| 22 | BOREID (in) | 12 |   |                    |    |



original logo folder (in).

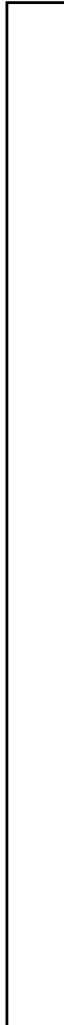
|                      |                               |
|----------------------|-------------------------------|
| Dataset Creation:    | Wed Jan 09 12:40:36 2006      |
|                      | XY Caliper Calibration Report |
| Serial Number/Model: | Probe1-Probe                  |

Wed Jan 09 11:27:11 2008

Ring

X Caliper

|    |       |    |         |     |         |    |
|----|-------|----|---------|-----|---------|----|
| 1: | 6     | in | 352,259 | cps | 383,714 | cp |
| 2: | 15.25 | in | 546,203 | cps | 579,036 | cp |
| 3: | 28.5  | in | 912,517 | cps | 941,621 | cp |
| 4: |       | in |         | cps |         | cp |
| 5: |       | in |         | cps |         | cp |
| 6: |       | in |         | cps |         | cp |

| Sensor | Offset (in) | Schematic   | Description  | Len. (in) | OD (in) | IR (in) |
|--------|-------------|---|--|-----------|---------|---------|
| XCAL   | 0.00        |  | XYC-Probe (Probe1)<br>Probe XY Caliper with 12" extensions | 5.17      | 3.50    | 99.00   |

|               |                                  |
|---------------|----------------------------------|
| Dataset:      | cal-flow.db: plant/F-2/run1/pass |
| Total Length: | 5.17 ft                          |