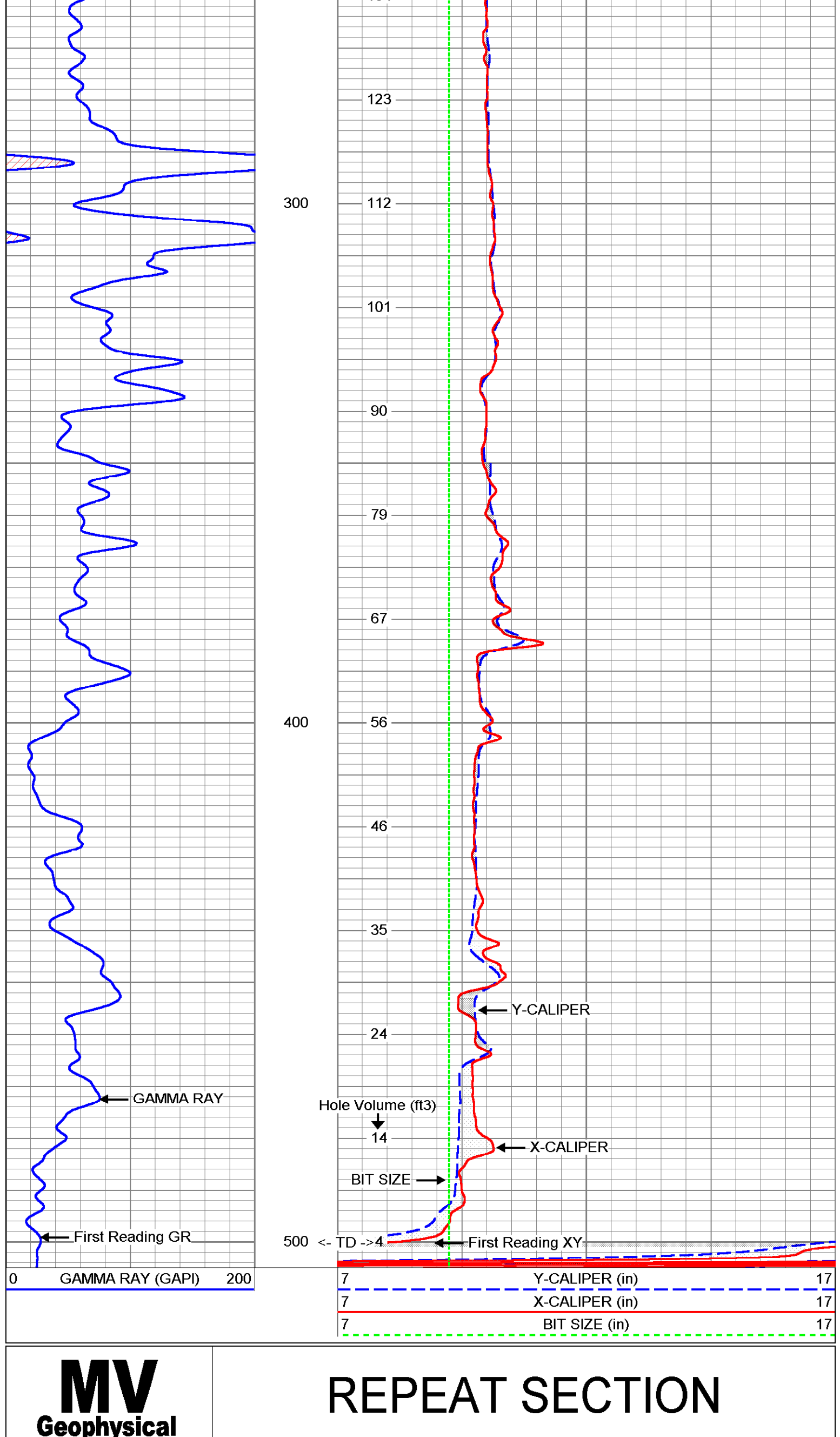
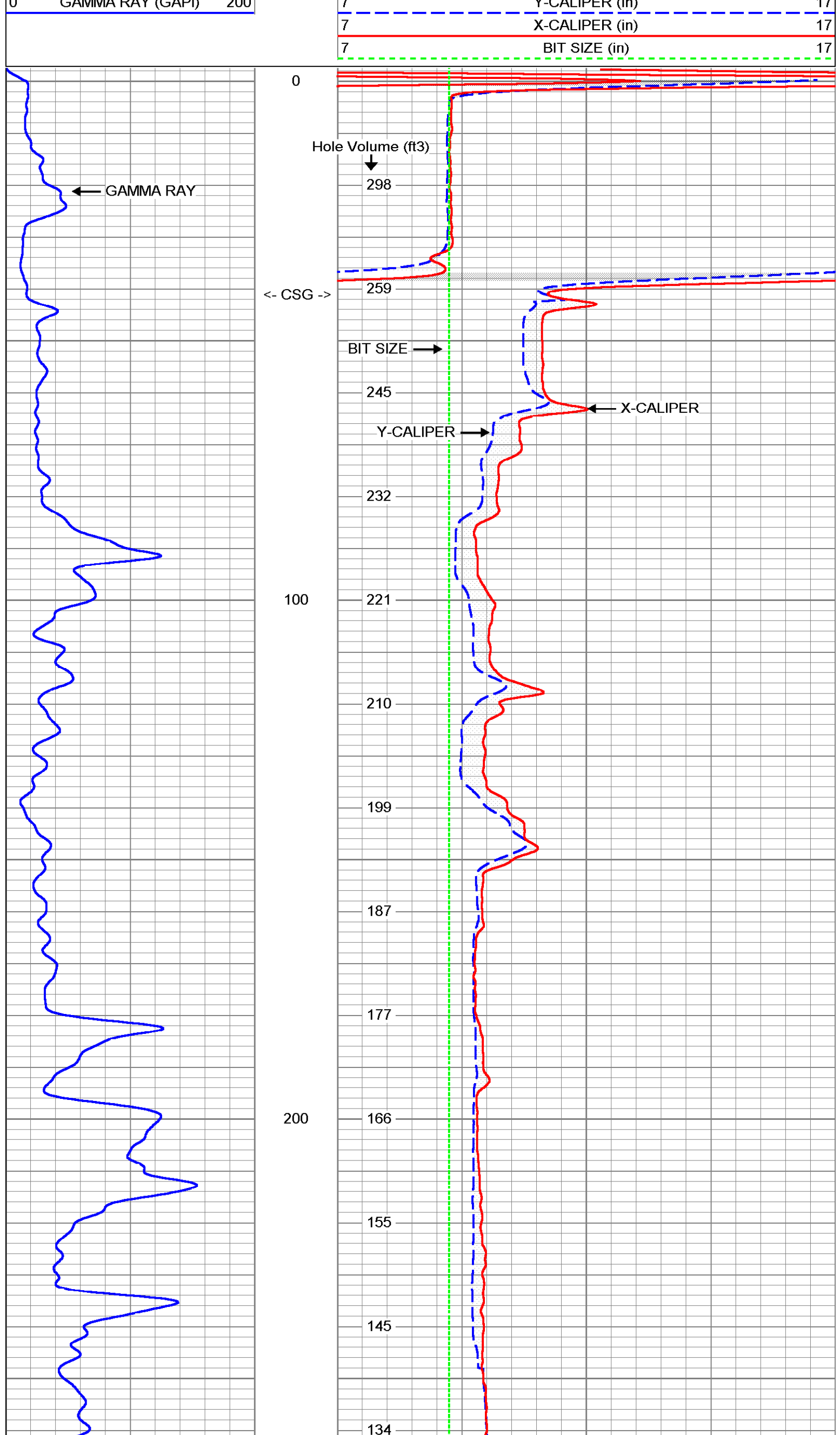
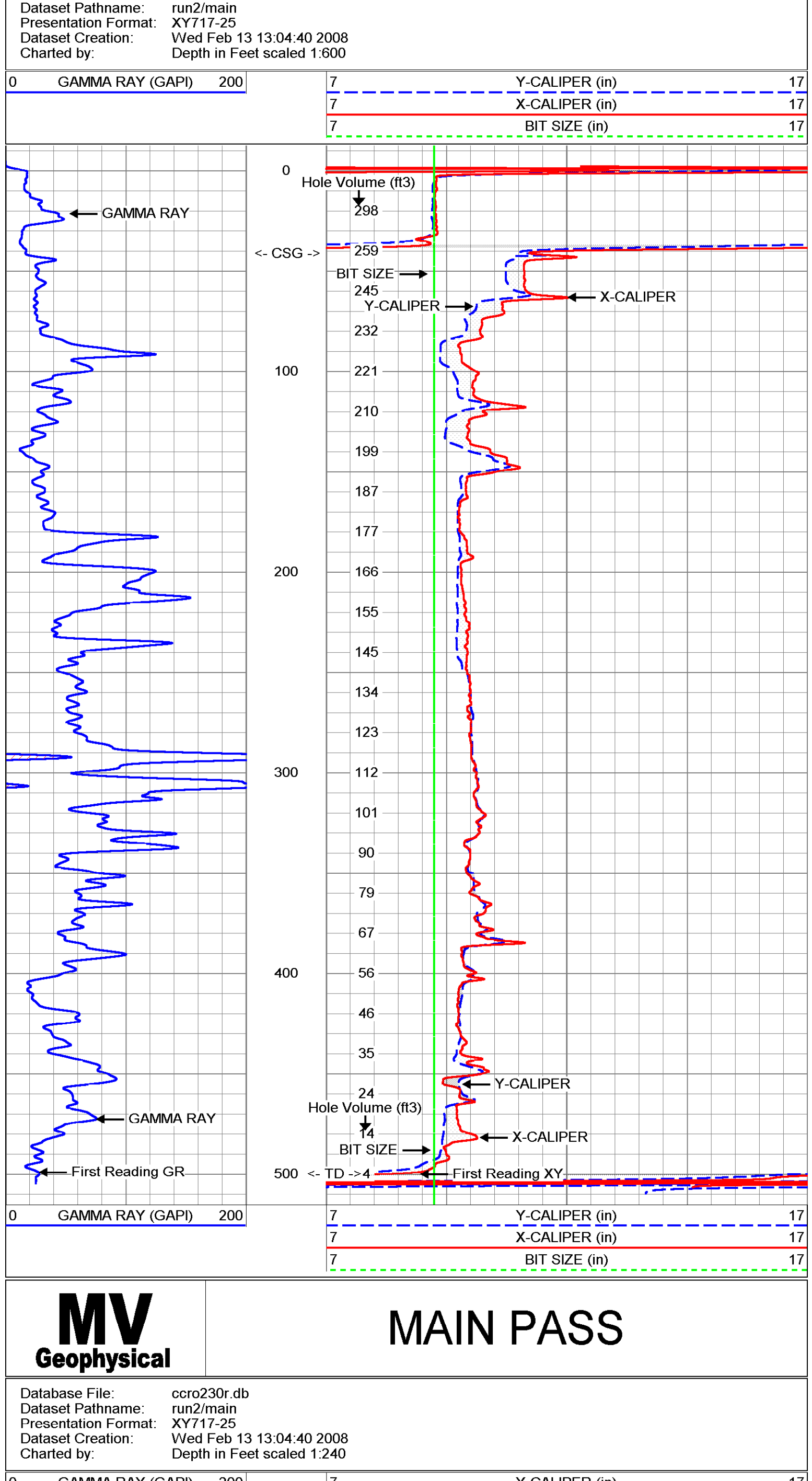
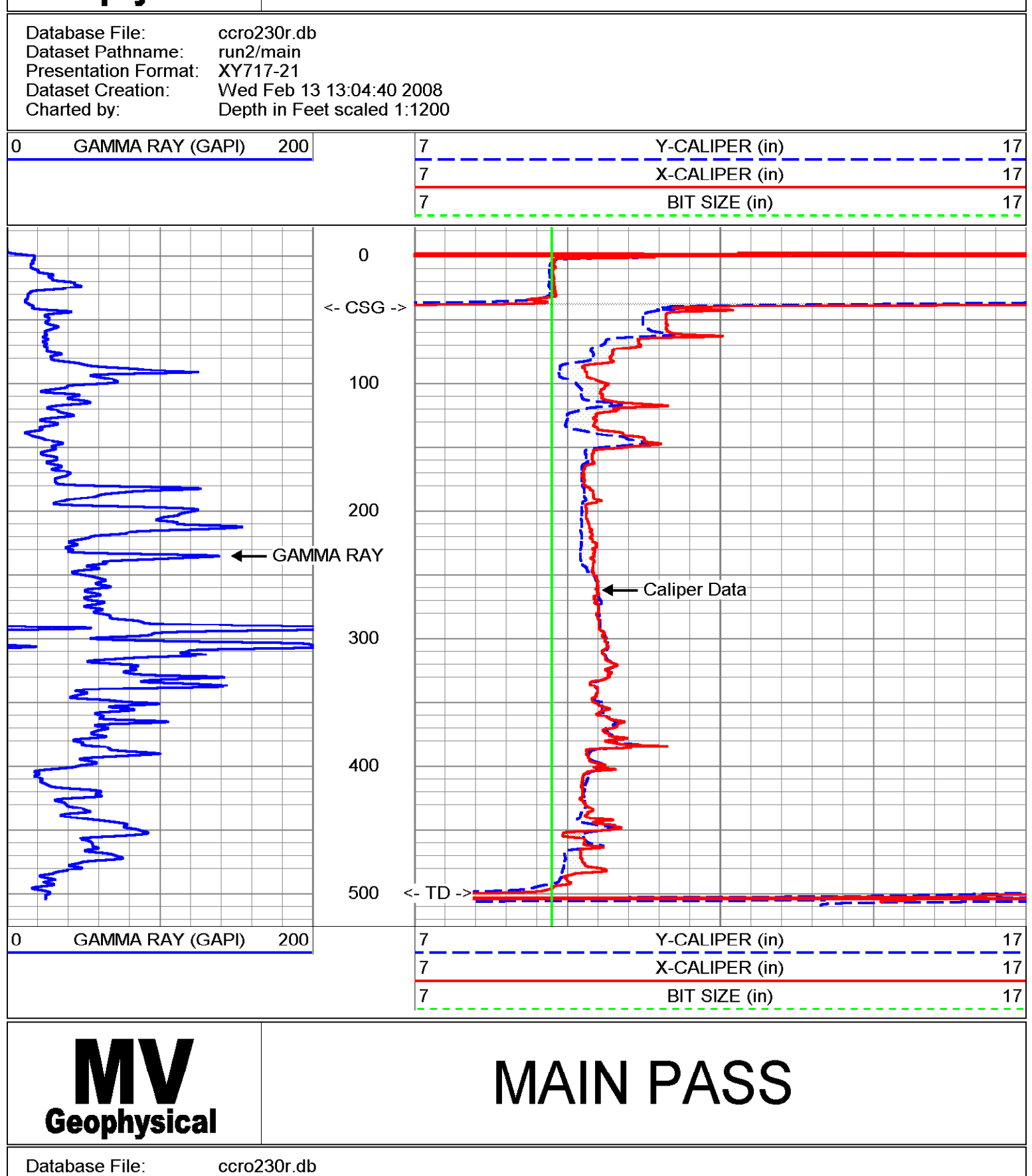


MV Geophysical	Company Well Field County State/Prv		Diversified Drilling Corporation RO 230 Replacement Cape Coral Lee Florida		X-Y CALIPER GAMMA RAY LOG
	Location		North of SW 32nd TER & SW 9th AVE Cape Coral Water Utilities Department MMWH		
	Other Services		XY/GR D/LSP		
	Elevation		K B D F G.L.		
	Date		13-FEB-2008		
	Run Number		ONE-3		
	Depth Logged		500'		
	Bottom Logged Interval		500'		
	Top Log Interval		SURFACE		
	Open Hole Size		9.25"		
Density / Viscosity		MWD/N			
Max Recorded Temp.		na			
Estimated Cement Top		na			
Time MWD Ready		10/30/21/3/2008			
Time Log/Gr on Bottom		11/30/21/3/2008			
Equipment Number		AMSC-1			
Recorded By		S.Miller/C.Miller			
Witnessed By		A.McIntire (WRS)			
Run Number		Bottom Record			
ONE		9.25"			
41"		500'			
		41"			

All interpretations are opinions based on inferences from electrical or other measurements and we cannot and do not guarantee the accuracy or correctness of any interpretation, and we shall not, except in the case of gross or willful negligence on our part, be liable or responsible for any loss, costs, damages, or expenses incurred or sustained by anyone resulting from any interpretation made by any of our officers, agents or employees. These interpretations are also subject to our general terms and conditions set out in our current Price Schedule.

Comments

X-Y Caliper Arm Extensions: 33"
GAMMA tool and CALIPER tool run separately.



Gamma Ray Calibration Report	
Serial Number:	MV01B
Tool Model:	RTSB
Performed:	Wed Feb 13 12:40:51 2008
Calibrator Value:	120 GAPI
Background Reading:	28.2735 cps
Calibrator Reading:	118.353 cps
Sensitivity:	1.33215 GAPI/cps

CCL 4.46 ft	CCL-MVGS 1.9 (MV01) 8.00 lb 1.90 in OD 1.33 ft
GR#2 1.15 ft	GR #2-RTSB (MV01B) 10.00 lb 1.90 in OD 3.33 ft
TEMP 0.10 ft	TEMP-RTS (MV01) 2.00 lb 1.90 in OD 0.46 ft

XY Caliper Calibration Report	
Serial Number:	01S
Tool Model:	XYCS
Performed:	Wed Feb 13 12:38:28 2008
Small Ring:	9.25 in
Large Ring:	19.25 in
Reading with Small Ring:	1226.16
Reading with Large Ring:	1500.9
Gain:	0.036398
Offset:	-35.3798

XYC-XYCS (01S) 110.00 lb 3.50 in OD 6.60 ft	
--	--

Dataset: run2/pass2 Total Length: 6.60 ft Total Weight: 110.00 lb O.D.: 3.50 in	
--	--