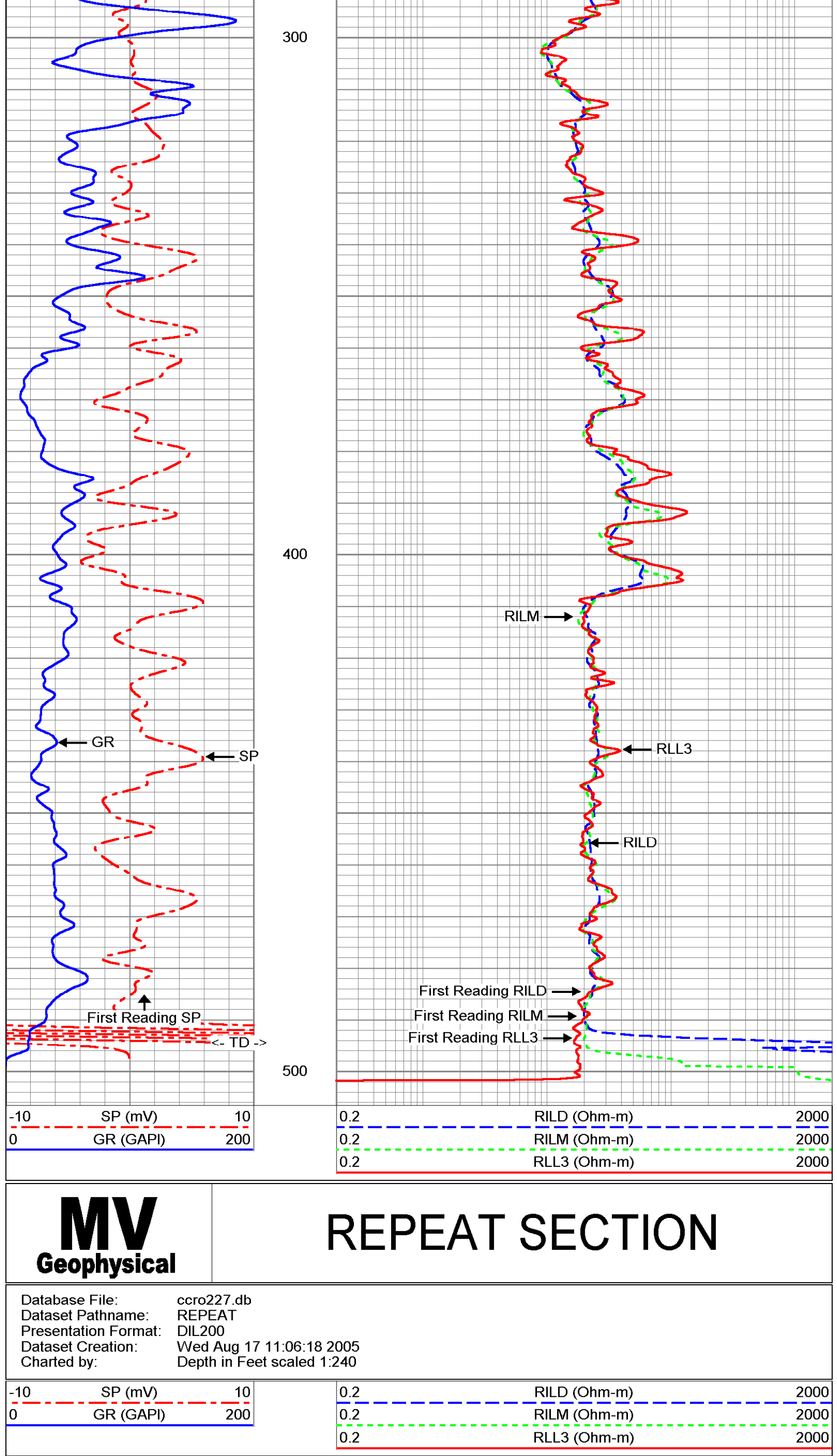
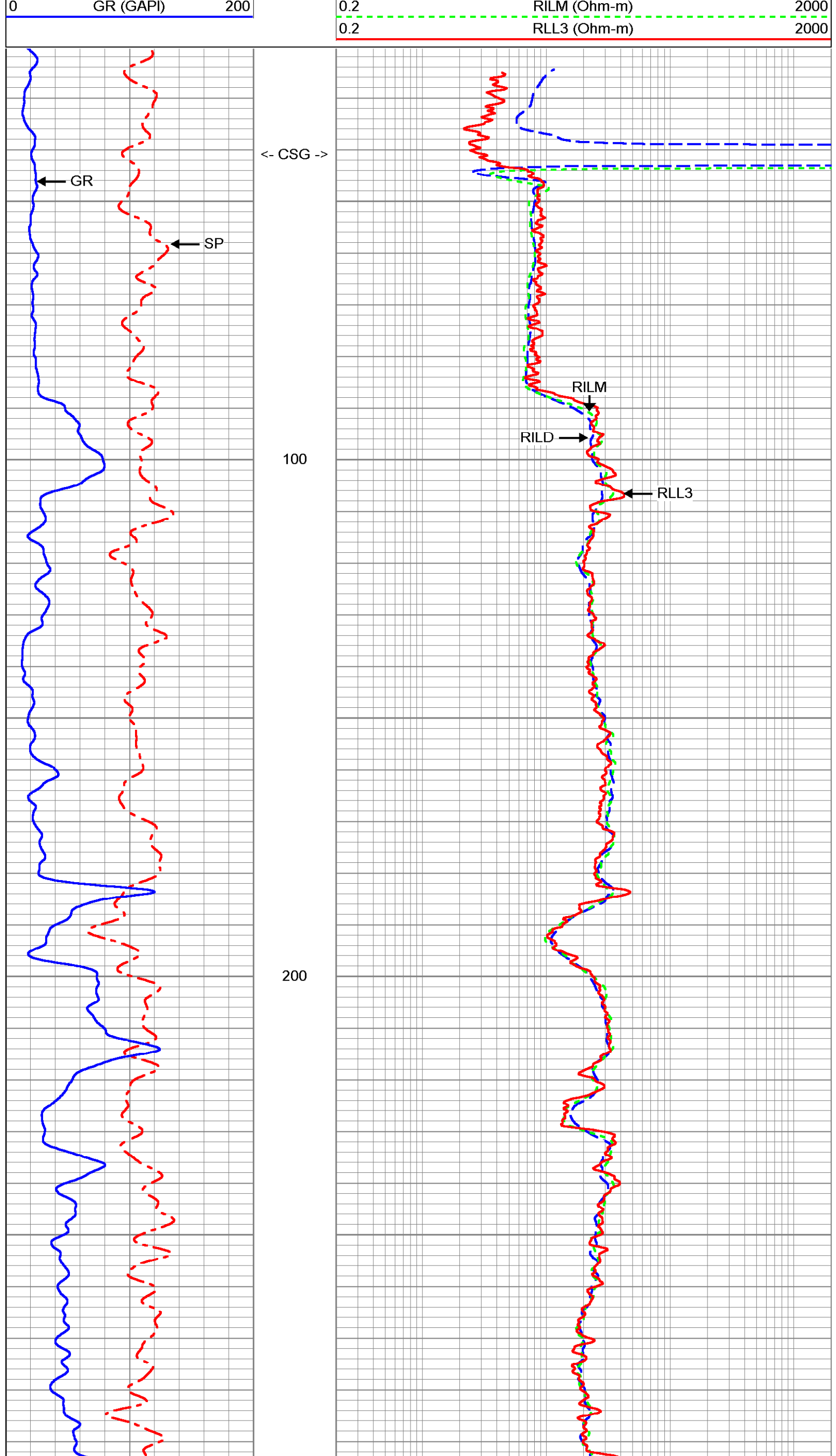
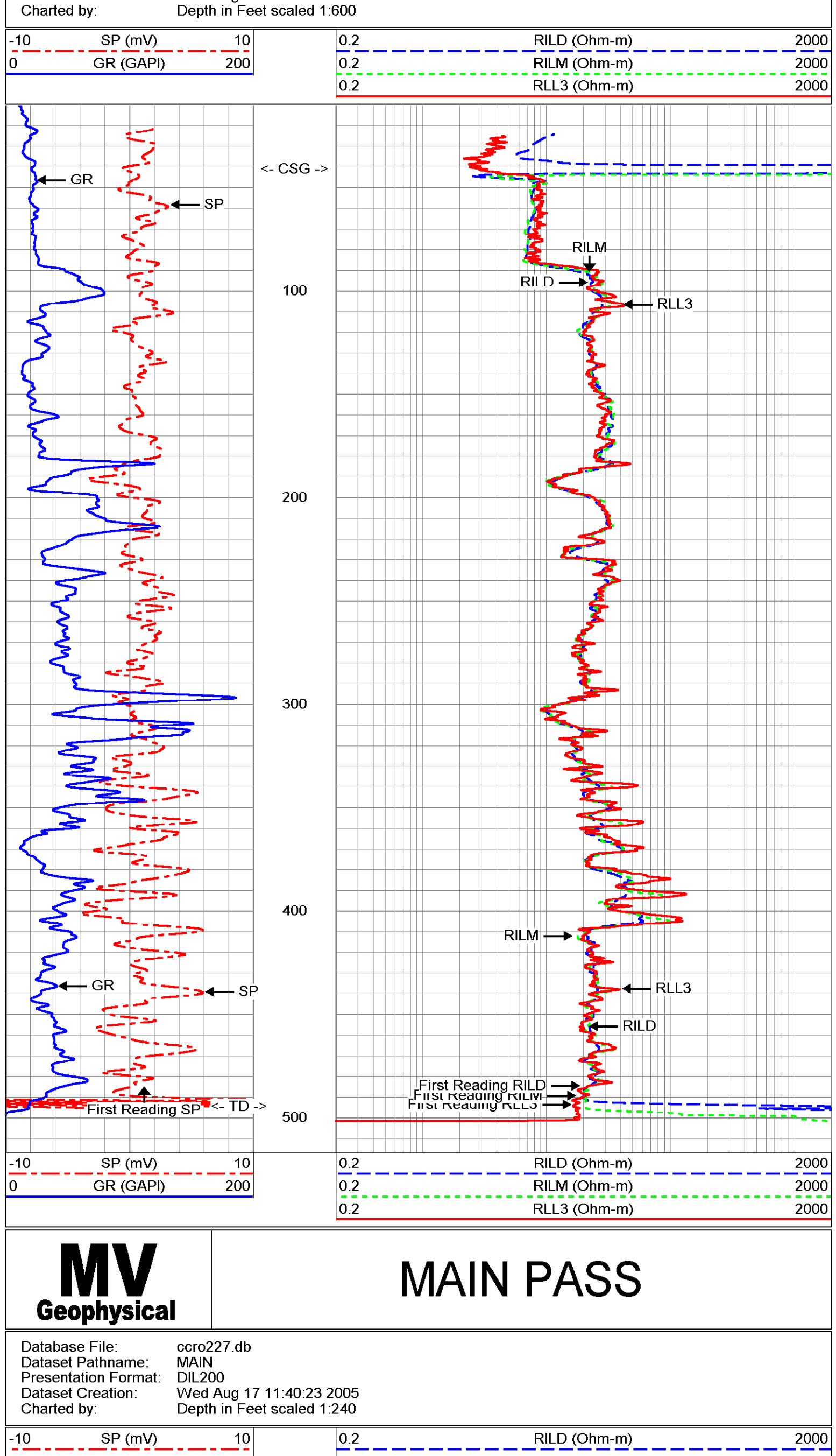
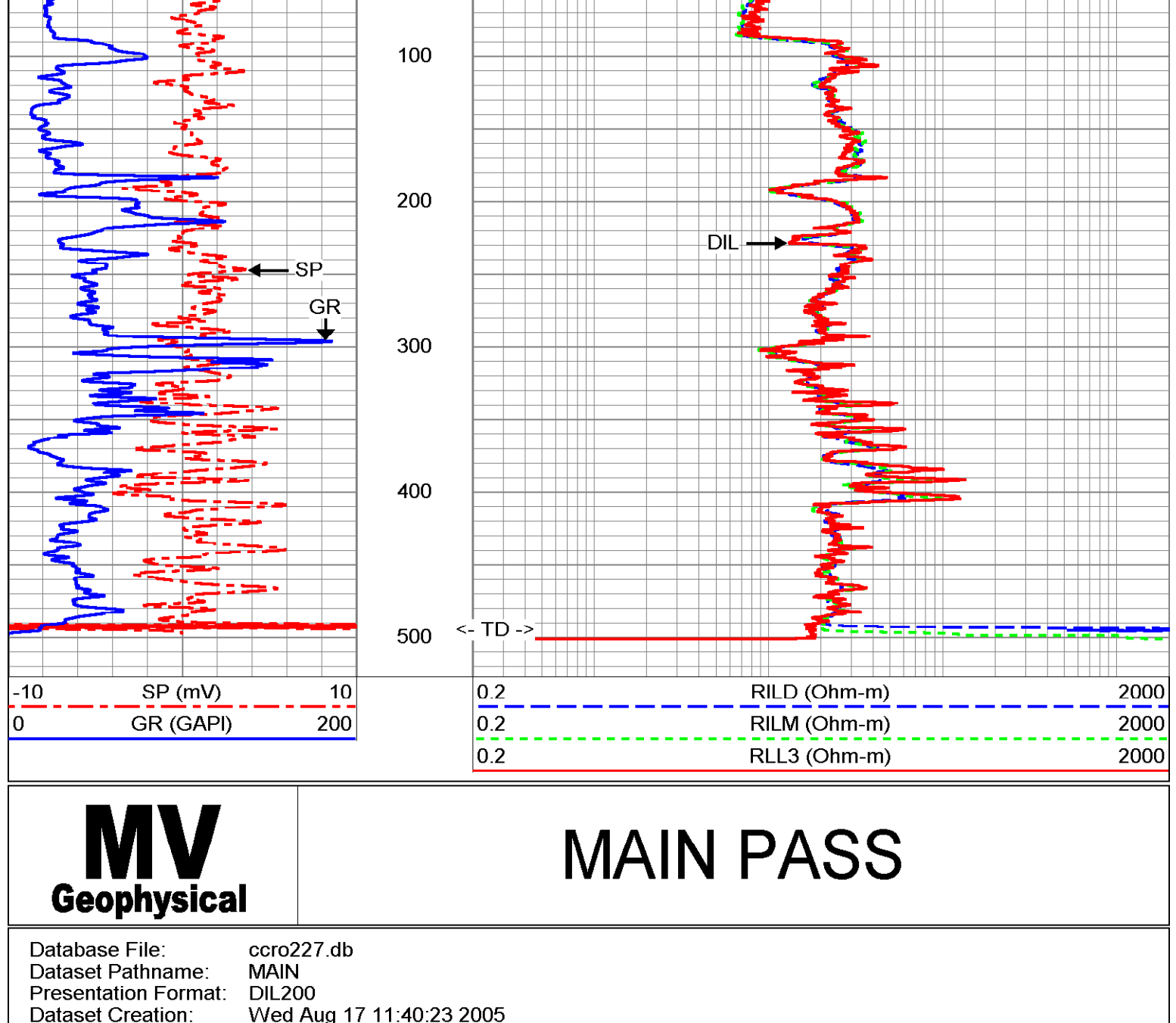
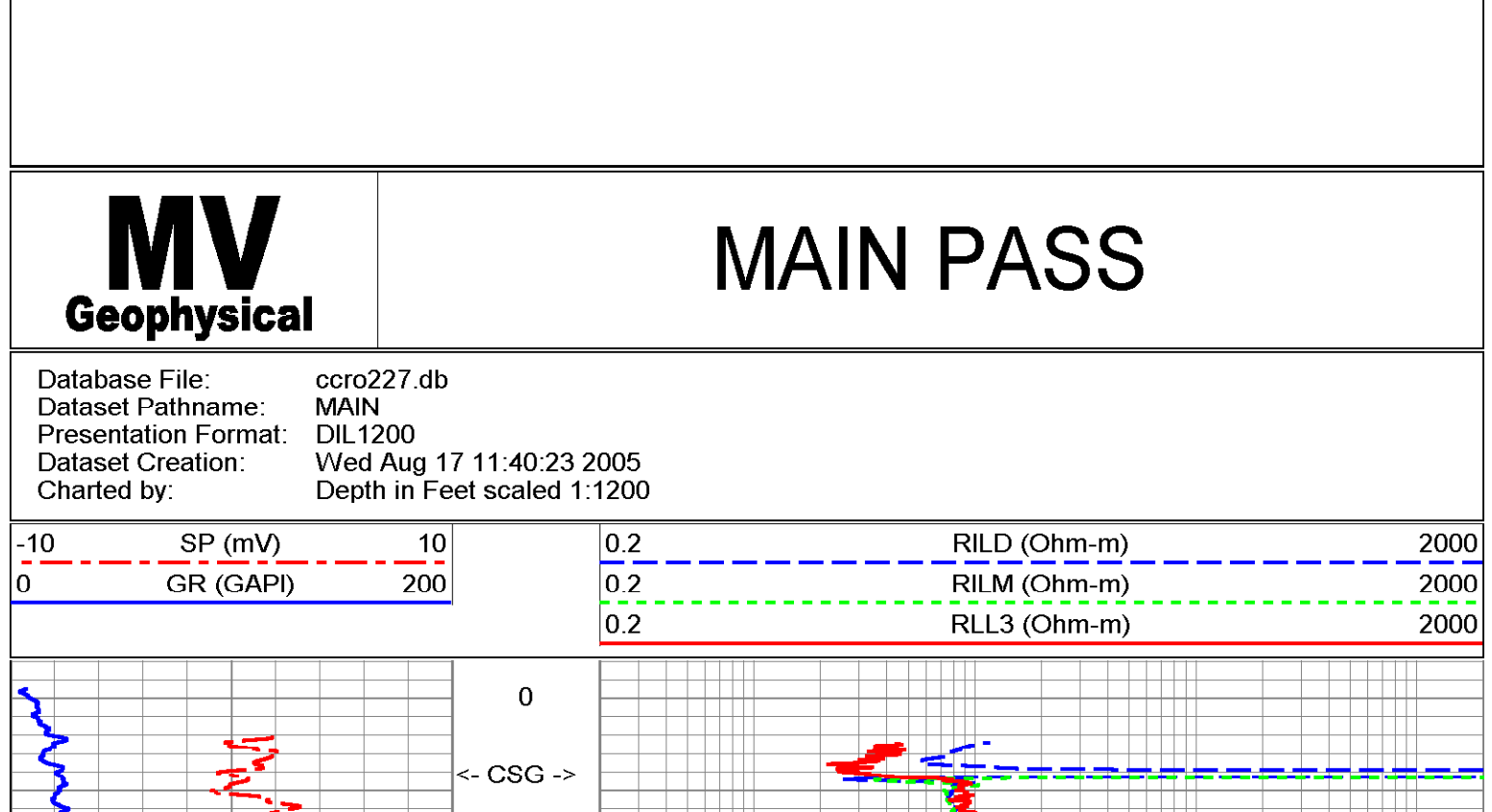


MV Geophysical	DUAL INDUCTION LL3 / SP LOG			
	Company Diversified Drilling Corporation			
	Well SWROW TP-227			
	Field Cape Coral			
County Lee	Location		Other Services	
	County Lee		XYGR	
	State/Prv Florida		Elevation	
	Chiquita & 28th Terrace SW		K.B. D.F.	
Date		Permanent Datum	G.L.	Elevation
Run Number		Log Measured From	G.L.	
Bottom Logged Interval		Drilling Measured From	G.L.	
Open Hole Size				
Type Fluid				
Type Fluid Density				
Max. Recorded Temp.				
Estimated Cement Top				
Time Well Ready				
Equipment Number				
Recorded By				
Witnessed By				
Run Number		Bottomhole Record		
Site		From	To	Size
Core Record		7.815'	459'	Weight
Pore String		40'		From
Production String		Size		To
		20'		Bottom
		3/16" WT		41'
		Surface		
		2005150		
		P.O. #		
		JOB No.		
		* FINAL PRINT *		

All interpretations are opinions based on inferences from electrical or other measurements and we cannot and do not guarantee the accuracy or correctness of any interpretation, and we shall not, except in the case of gross or willful negligence on our part, be liable or responsible for any loss, costs, damages, or expenses incurred or sustained by anyone resulting from any interpretation made by any of our officers, agents or employees. These interpretations are also subject to our general terms and conditions set out in our current Price Schedule.



Dual Induction Calibration Report									
Serial-Model: 5390-R					Sun Jan 16 21:49:43 2005				
Surface Cal Performed:					Wed Aug 17 11:37:06 2005				
Downhole Cal Performed:					Wed Aug 17 12:13:13 2005				
After Survey Verification Performed:									
Surface Calibration									
Loop:	Readings			References			Results		
	Air	Loop		Air	Loop		m	b	
Deep	0.050	0.646	V	0.000	400.000	mmho-m	671.771	-33.646	
Medium	0.001	0.732	V	0.000	464.000	mmho-m	634.710	-0.492	
Internal:	Zero	Cal		Zero	Cal		m	b	
Deep	0.011	0.641	V	0.000	400.000	mmho-m	634.996	-7.104	
Medium	-0.009	0.738	V	0.000	464.000	mmho-m	620.980	5.734	
Downhole Calibration									
Internal:	Readings			References			Results		
	Zero	Cal		Zero	Cal		m	b	
Deep	27.401	396.707	mmho-m	-26.130	397.036	mmho-m	0.998	1.210	
Medium	-7.333	468.176	mmho-m	-6.353	467.967	mmho-m	0.997	0.962	
Shallow	2.510	0.018	V	494.500	2.000	Ohm-m	197.633	-1.538	
After Survey Verification									
Internal:	Readings			Targets			Results		
	Zero	Cal		Zero	Cal		m'	b'	
Deep	-26.745	397.695	mmho-m	-27.401	396.707	mmho-m	0.998	1.210	
Medium	-6.125	469.648	mmho-m	-7.333	468.176	mmho-m	0.997	0.962	
Shallow	494.153	2.186	Ohm-m	494.500	2.000	Ohm-m	1.001	-0.188	

