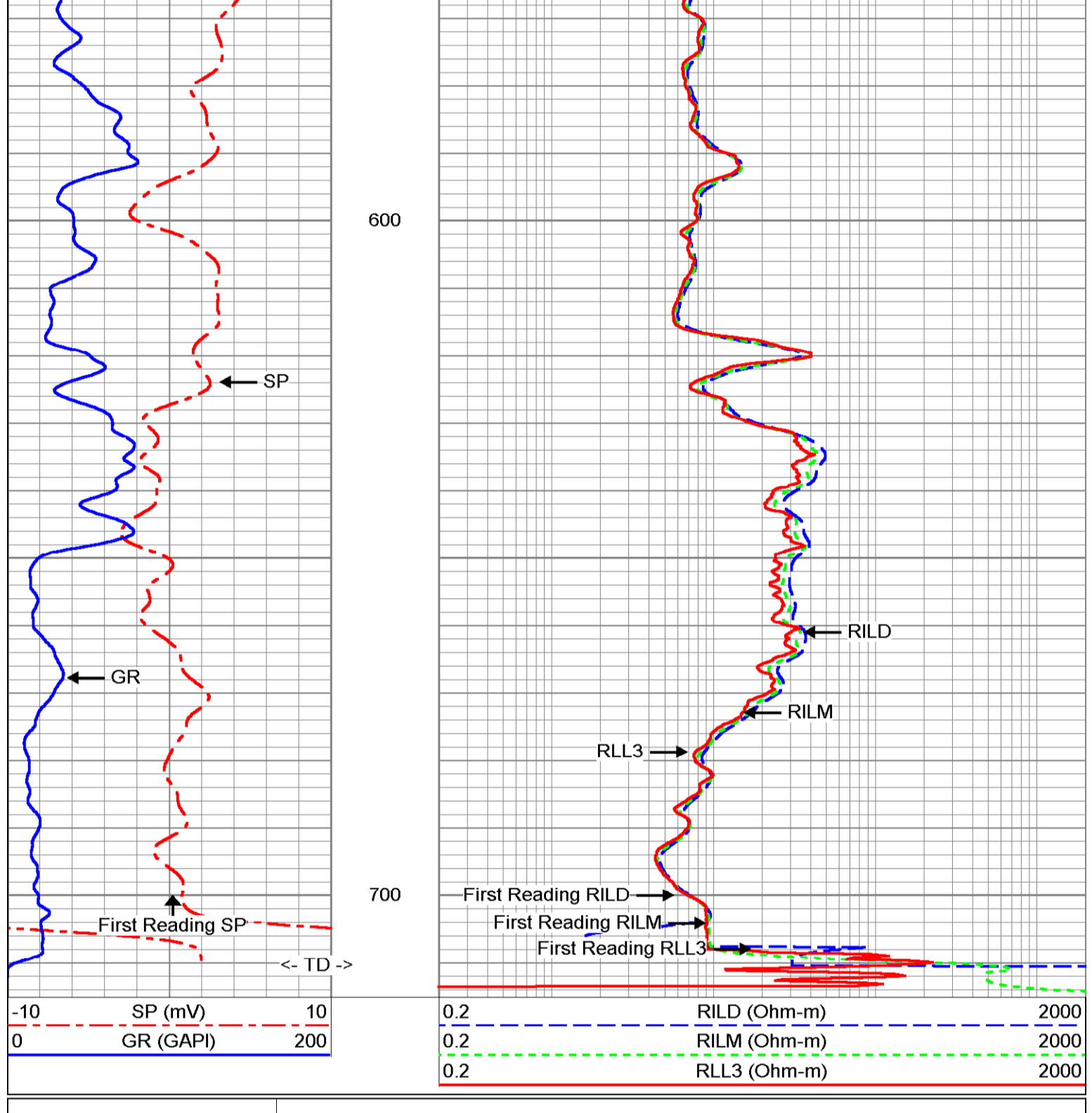
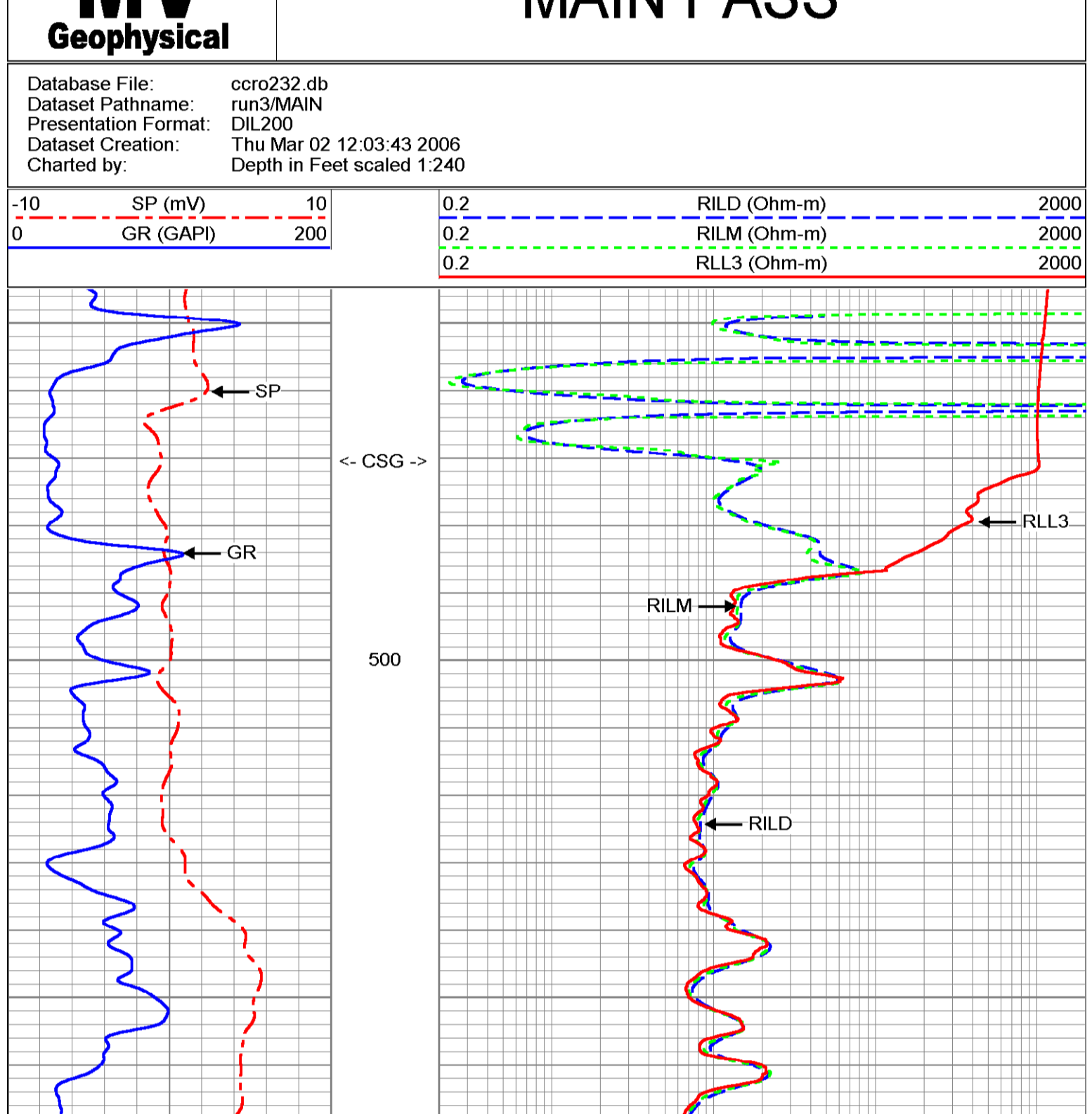
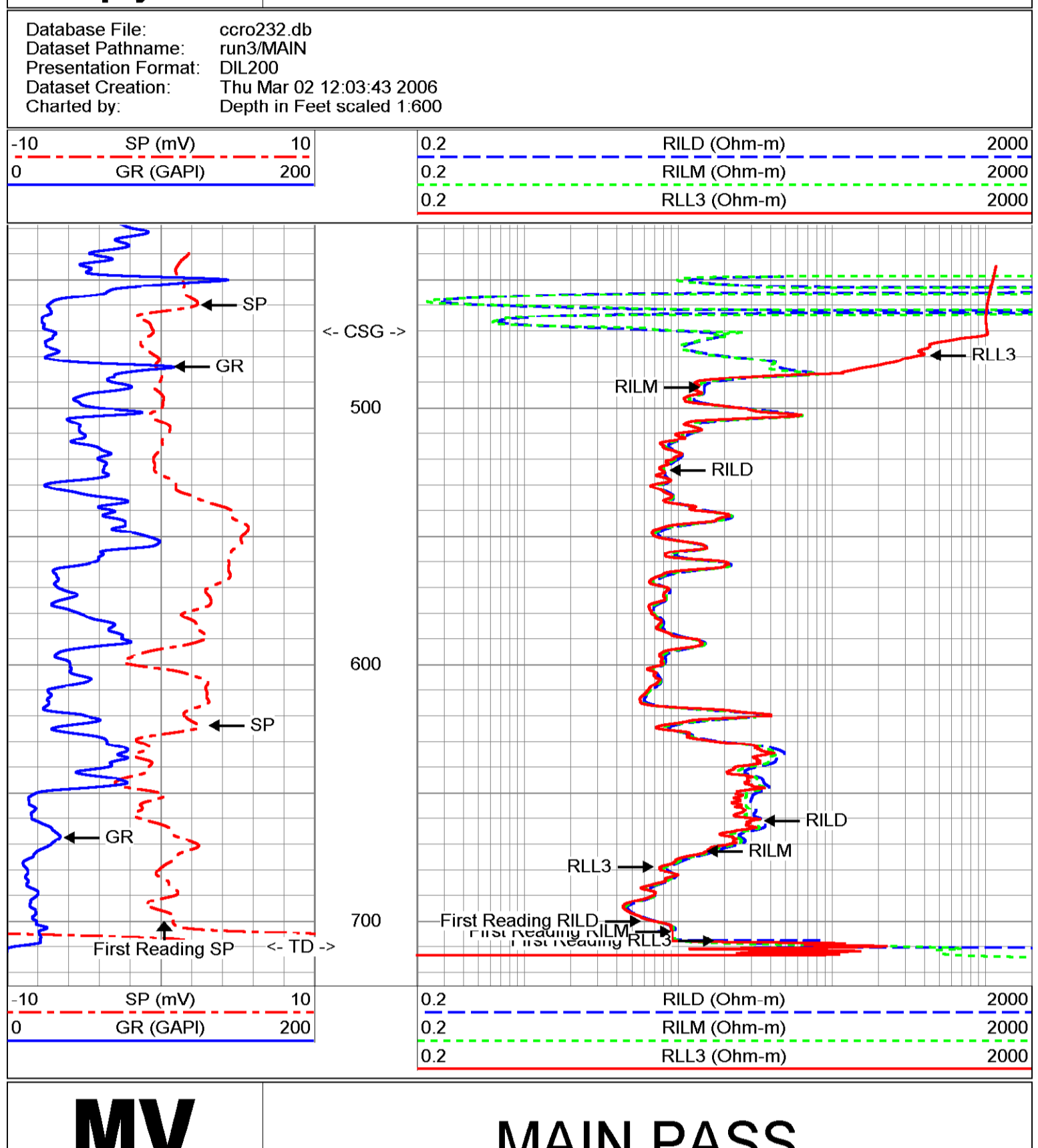
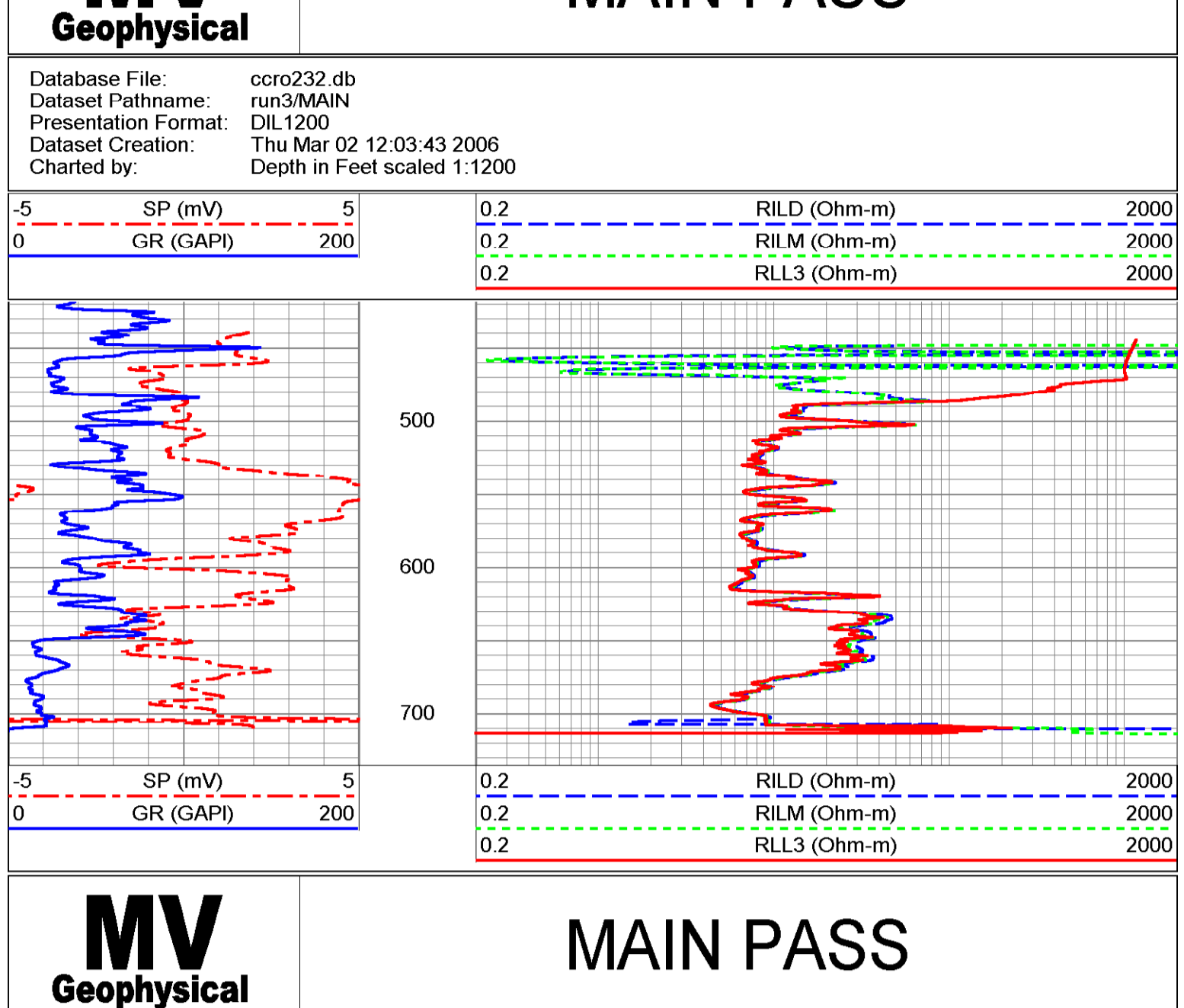
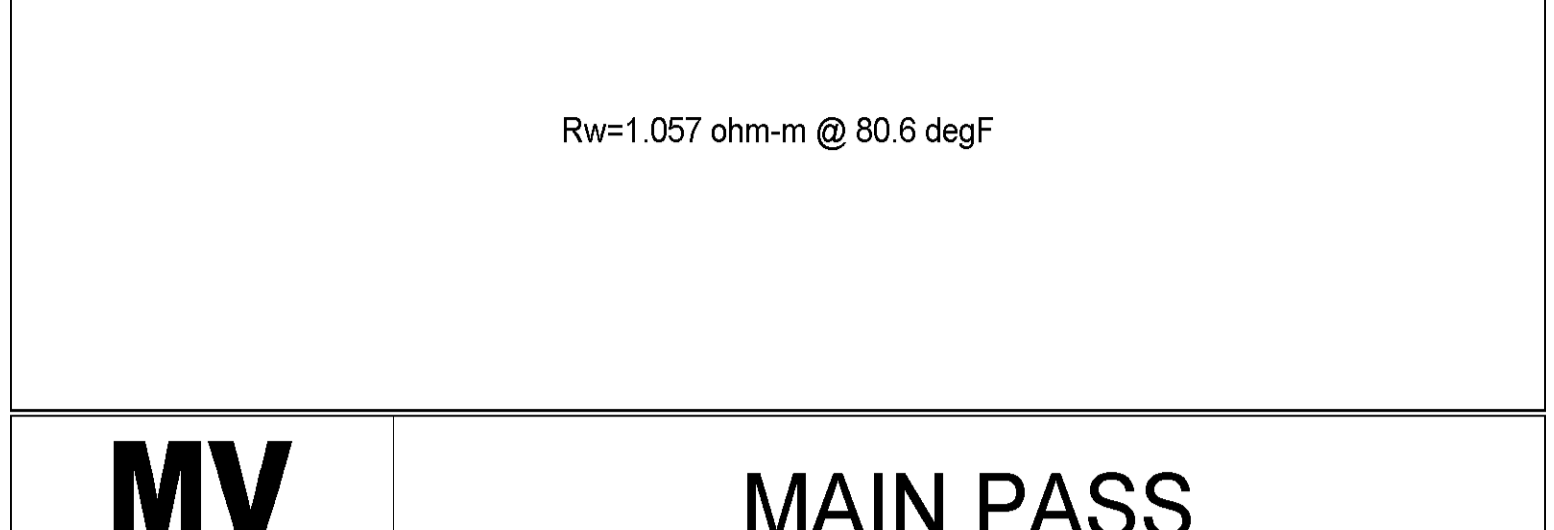


Geophysical		DUAL INDUCTION LL3 / SP LOG	
Company Diversified Drilling Corp.		Company Diversified Drilling Corporation	
Well SWROW TP-232		Well SWROW TP-232	
Field Cape Coral		Field Cape Coral	
County Lee		County Lee	
State/Prv Florida		State/Prv Florida	
Location SW corner of Chiquita & SW 17th Terrace Cape Coral Water Utilities Department MWH		Other Services XYGR-BHC FCT-FLO DHTV	
		Elevation K.B. D.F. G.L.	
Permanent Datum Log Measured From Drilling Measured From		G.L. G.L. G.L.	
Date 2-MAR-2006		Run Number THREE	
Depth Driller 708		Bottom Logger 710	
Bottom Logger Interval 708		Top Log Interval 470	
Top Log Interval 470		Type Fluid H2O	
Open Hole Size 14"		H2O NA/NA	
Density / Viscosity		NA	
Max. Recorded Temp.		NA	
Estimated Cement Top		10:30 3/2/2006	
Time Well Ready		11:46 3/2/2006	
Time Logger on Bottom		MWS-1	
Equipment Number		Ft Myers	
Location		S.Miller	
Witnessed By		G.Young (MWH)	
Recorded By		S.Ramabazoo (MWH)	
Run Number		Borehole Record	
ONE 7.875'		To 500'	
TWO 18.75'		Size 4.3"	
THREE 11"		Weight 708	
Casing Record		710' Logger	
Surface String 20'		Wt/Lft 37.5 Wt	
Production String 12' FRP		Top SURFACE	
2006065		Bottom 4.3"	
P.O. #.		Job No.	
* FIELD PRINT *			
<<< Fold Here >>>			
All interpretations are opinions based on inferences from electrical or other measurements and we cannot and do not guarantee the accuracy or correctness of any interpretation, and we shall not, except in the case of gross or willful negligence on our part, be liable or responsible for any loss, costs, damages, or expenses incurred or sustained by anyone resulting from any interpretation made by any of our officers, agents or employees. These interpretations are also subject to our general terms and conditions set out in our current Price Schedule.			
Comments			

All interpretations are opinions based on inferences from electrical or other measurements and we cannot and do not guarantee the accuracy or correctness of any interpretation, and we shall not, except in the case of gross or willful negligence on our part, be liable or responsible for any loss, costs, damages, or expenses incurred or sustained by anyone resulting from any interpretation made by any of our officers, agents or employees. These interpretations are also subject to our general terms and conditions set out in our current Price Schedule.



Dual Induction Calibration Report									
Serial-Model:		5390-R		Sun Jan 16 21:49:43 2005					
Surface Cal Performed:				Thu Mar 02 11:32:21 2006					
Downhole Cal Performed:				Thu Mar 02 12:08:42 2006					
After Survey Verification Performed:									

Surface Calibration									
Readings				References				Results	
Loop:	Air	Loop		Air	Loop			m	b

Deep	0.050	0.646	V	0.000	400.000	mmho-m		671.771	-33.646
Medium	0.001	0.732	V	0.000	464.000	mmho-m		634.710	-0.492

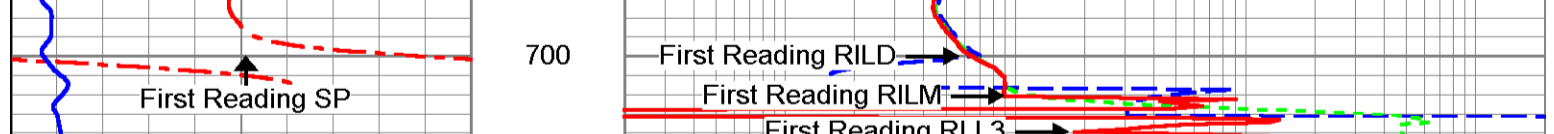
Internal:	Zero	Cal		Zero	Cal			m	b
Deep	0.011	0.641	V	0.000	400.000	mmho-m		634.996	-7.104
Medium	-0.009	0.738	V	0.000	464.000	mmho-m		620.900	5.734

Downhole Calibration									
Readings				References				Results	
Internal:	Zero	Cal		Zero	Cal			m	b

Deep	-26.069	398.421	mmho-m	-26.130	397.036	mmho-m		0.997	-0.143
Medium	-6.229	469.985	mmho-m	-6.353	467.967	mmho-m		0.996	-0.149
Shallow	0.011	0.005	V	494.500	2.000	Ohm-m		88090.828	-449.100

After Survey Verification									
Readings				Targets				Results	
Internal:	Zero	Cal		Zero	Cal			m'	b'

Deep	-26.442	396.818	mmho-m	-26.069	398.421	mmho-m		0.997	-0.143
Medium	-5.997	469.509	mmho-m	-6.229	469.985	mmho-m		0.996	-0.149
Shallow	227.281	73.509	Ohm-m	494.500	2.000	Ohm-m		3.203	-233.435



Dataset: run3/pass5
Total Length: 20.90 ft
Total Weight: 345.00 lb
O.D.: 4.00 in