


FLOWMETER  
LOG

		<b>FLOWMETER LOG</b>	
<b>Company</b> <b>FP&amp;L</b> <b>Well</b> <b>Turkey Point DZMW-1</b> <b>Field</b> <b>Florida City</b> <b>County</b> <b>Miami-Dade</b> <b>State/Prv</b> <b>Florida</b>		<b>Location</b> <b>FPL Turkey Point Power Plant</b> <b>LAT. 25 25 '19" N LONG. 80 20 08" W</b> <b>McNabb Hydrogeologic Consulting, Inc.</b>	
<b>Run Number</b> 171AAV-2012 <b>Depth</b> 1865' <b>Bottom Logged</b> 1876' <b>Top Log Interval</b> 10-65' <b>Open Hole Size</b> 12.25" <b>Type Fluid</b> H <sub>2</sub> O <b>Temperature</b> 18.0°C <b>Pressure</b> 10.0 PSI <b>Max. Recorded Temp.</b> 18.0°C <b>Estimated Cement Top</b> 13.00 5/17/2012 <b>Time Logged on Bottom</b> 19.15 5/17/2012 <b>Equipment Number</b> MGS-1 <b>Log Operator</b> S. Miller <b>Recorded By</b> M. Green (MHC)		<b>Permanent Datum</b> <b>Pac Level</b> <b>Drilling Measured From</b> <b>Pac Level</b> <b>Elevation</b> <b>Elevation</b> <b>Other Services</b> <b>XVGR PCT</b> <b>DIL/BHC</b> <b>FLO/TDS</b>	
<b>Run Number</b> 171AAV-2012 <b>Depth</b> 1865' <b>Bottom Logged</b> 1876' <b>Top Log Interval</b> 10-65' <b>Open Hole Size</b> 12.25" <b>Type Fluid</b> H <sub>2</sub> O <b>Temperature</b> 18.0°C <b>Pressure</b> 10.0 PSI <b>Max. Recorded Temp.</b> 18.0°C <b>Estimated Cement Top</b> 13.00 5/17/2012 <b>Time Logged on Bottom</b> 19.15 5/17/2012 <b>Equipment Number</b> MGS-1 <b>Log Operator</b> S. Miller <b>Recorded By</b> M. Green (MHC)		<b>Corrections</b> <b>Temperature</b> 0.00 <b>Pressure</b> 0.00 <b>Depth</b> 0.00 <b>Time</b> 0.00 <b>Other</b> 0.00	
<b>Run Number</b> 171AAV-2012 <b>Depth</b> 1865' <b>Bottom Logged</b> 1876' <b>Top Log Interval</b> 10-65' <b>Open Hole Size</b> 12.25" <b>Type Fluid</b> H <sub>2</sub> O <b>Temperature</b> 18.0°C <b>Pressure</b> 10.0 PSI <b>Max. Recorded Temp.</b> 18.0°C <b>Estimated Cement Top</b> 13.00 5/17/2012 <b>Time Logged on Bottom</b> 19.15 5/17/2012 <b>Equipment Number</b> MGS-1 <b>Log Operator</b> S. Miller <b>Recorded By</b> M. Green (MHC)		<b>Corrections</b> <b>Temperature</b> 0.00 <b>Pressure</b> 0.00 <b>Depth</b> 0.00 <b>Time</b> 0.00 <b>Other</b> 0.00	
<b>Run Number</b> 171AAV-2012 <b>Depth</b> 1865' <b>Bottom Logged</b> 1876' <b>Top Log Interval</b> 10-65' <b>Open Hole Size</b> 12.25" <b>Type Fluid</b> H <sub>2</sub> O <b>Temperature</b> 18.0°C <b>Pressure</b> 10.0 PSI <b>Max. Recorded Temp.</b> 18.0°C <b>Estimated Cement Top</b> 13.00 5/17/2012 <b>Time Logged on Bottom</b> 19.15 5/17/2012 <b>Equipment Number</b> MGS-1 <b>Log Operator</b> S. Miller <b>Recorded By</b> M. Green (MHC)		<b>Corrections</b> <b>Temperature</b> 0.00 <b>Pressure</b> 0.00 <b>Depth</b> 0.00 <b>Time</b> 0.00 <b>Other</b> 0.00	
<b>Run Number</b> 171AAV-2012 <b>Depth</b> 1865' <b>Bottom Logged</b> 1876' <b>Top Log Interval</b> 10-65' <b>Open Hole Size</b> 12.25" <b>Type Fluid</b> H <sub>2</sub> O <b>Temperature</b> 18.0°C <b>Pressure</b> 10.0 PSI <b>Max. Recorded Temp.</b> 18.0°C <b>Estimated Cement Top</b> 13.00 5/17/2012 <b>Time Logged on Bottom</b> 19.15 5/17/2012 <b>Equipment Number</b> MGS-1 <b>Log Operator</b> S. Miller <b>Recorded By</b> M. Green (MHC)		<b>Corrections</b> <b>Temperature</b> 0.00 <b>Pressure</b> 0.00 <b>Depth</b> 0.00 <b>Time</b> 0.00 <b>Other</b> 0.00	
<b>Run Number</b> 171AAV-2012 <b>Depth</b> 1865' <b>Bottom Logged</b> 1876' <b>Top Log Interval</b> 10-65' <b>Open Hole Size</b> 12.25" <b>Type Fluid</b> H <sub>2</sub> O <b>Temperature</b> 18.0°C <b>Pressure</b> 10.0 PSI <b>Max. Recorded Temp.</b> 18.0°C <b>Estimated Cement Top</b> 13.00 5/17/2012 <b>Time Logged on Bottom</b> 19.15 5/17/2012 <b>Equipment Number</b> MGS-1 <b>Log Operator</b> S. Miller <b>Recorded By</b> M. Green (MHC)		<b>Corrections</b> <b>Temperature</b> 0.00 <b>Pressure</b> 0.00 <b>Depth</b> 0.00 <b>Time</b> 0.00 <b>Other</b> 0.00	
<b>Run Number</b> 171AAV-2012 <b>Depth</b> 1865' <b>Bottom Logged</b> 1876' <b>Top Log Interval</b> 10-65' <b>Open Hole Size</b> 12.25" <b>Type Fluid</b> H <sub>2</sub> O <b>Temperature</b> 18.0°C <b>Pressure</b> 10.0 PSI <b>Max. Recorded Temp.</b> 18.0°C <b>Estimated Cement Top</b> 13.00 5/17/2012 <b>Time Logged on Bottom</b> 19.15 5/17/2012 <b>Equipment Number</b> MGS-1 <b>Log Operator</b> S. Miller <b>Recorded By</b> M. Green (MHC)		<b>Corrections</b> <b>Temperature</b> 0.00 <b>Pressure</b> 0.00 <b>Depth</b> 0.00 <b>Time</b> 0.00 <b>Other</b> 0.00	
<b>Run Number</b> 171AAV-2012 <b>Depth</b> 1865' <b>Bottom Logged</b> 1876' <b>Top Log Interval</b> 10-65' <b>Open Hole Size</b> 12.25" <b>Type Fluid</b> H <sub>2</sub> O <b>Temperature</b> 18.0°C <b>Pressure</b> 10.0 PSI <b>Max. Recorded Temp.</b> 18.0°C <b>Estimated Cement Top</b> 13.00 5/17/2012 <b>Time Logged on Bottom</b> 19.15 5/17/2012 <b>Equipment Number</b> MGS-1 <b>Log Operator</b> S. Miller <b>Recorded By</b> M. Green (MHC)		<b>Corrections</b> <b>Temperature</b> 0.00 <b>Pressure</b> 0.00 <b>Depth</b> 0.00 <b>Time</b> 0.00 <b>Other</b> 0.00	
<b>Run Number</b> 171AAV-2012 <b>Depth</b> 1865' <b>Bottom Logged</b> 1876' <b>Top Log Interval</b> 10-65' <b>Open Hole Size</b> 12.25" <b>Type Fluid</b> H <sub>2</sub> O <b>Temperature</b> 18.0°C <b>Pressure</b> 10.0 PSI <b>Max. Recorded Temp.</b> 18.0°C <b>Estimated Cement Top</b> 13.00 5/17/2012 <b>Time Logged on Bottom</b> 19.15 5/17/2012 <b>Equipment Number</b> MGS-1 <b>Log Operator</b> S. Miller <b>Recorded By</b> M. Green (MHC)		<b>Corrections</b> <b>Temperature</b> 0.00 <b>Pressure</b> 0.00 <b>Depth</b> 0.00 <b>Time</b> 0.00 <b>Other</b> 0.00	
<b>Run Number</b> 171AAV-2012 <b>Depth</b> 1865' <b>Bottom Logged</b> 1876' <b>Top Log Interval</b> 10-65' <b>Open Hole Size</b> 12.25" <b>Type Fluid</b> H <sub>2</sub> O <b>Temperature</b> 18.0°C <b>Pressure</b> 10.0 PSI <b>Max. Recorded Temp.</b> 18.0°C <b>Estimated Cement Top</b> 1			

STATIC and DYNAMIC down passes were made at 76 fpm.

NO station performed.

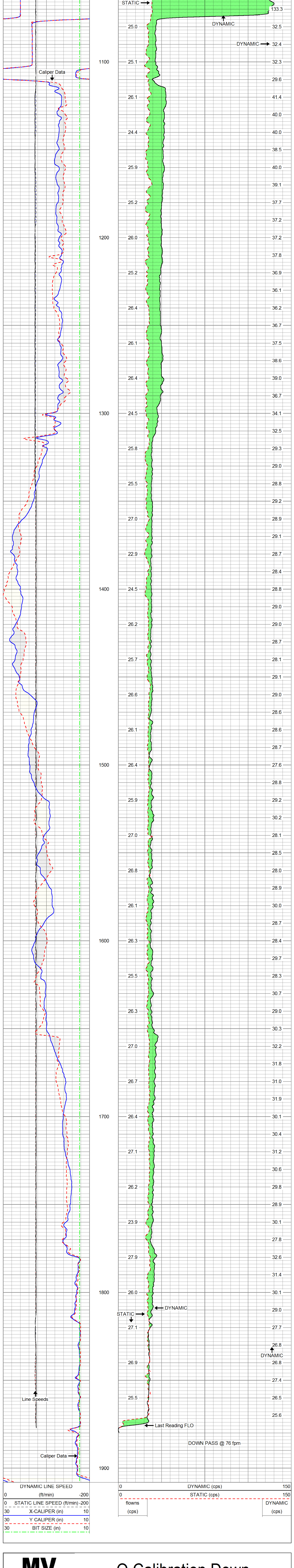
Q = 500 gpm

Drill Pipe se

---

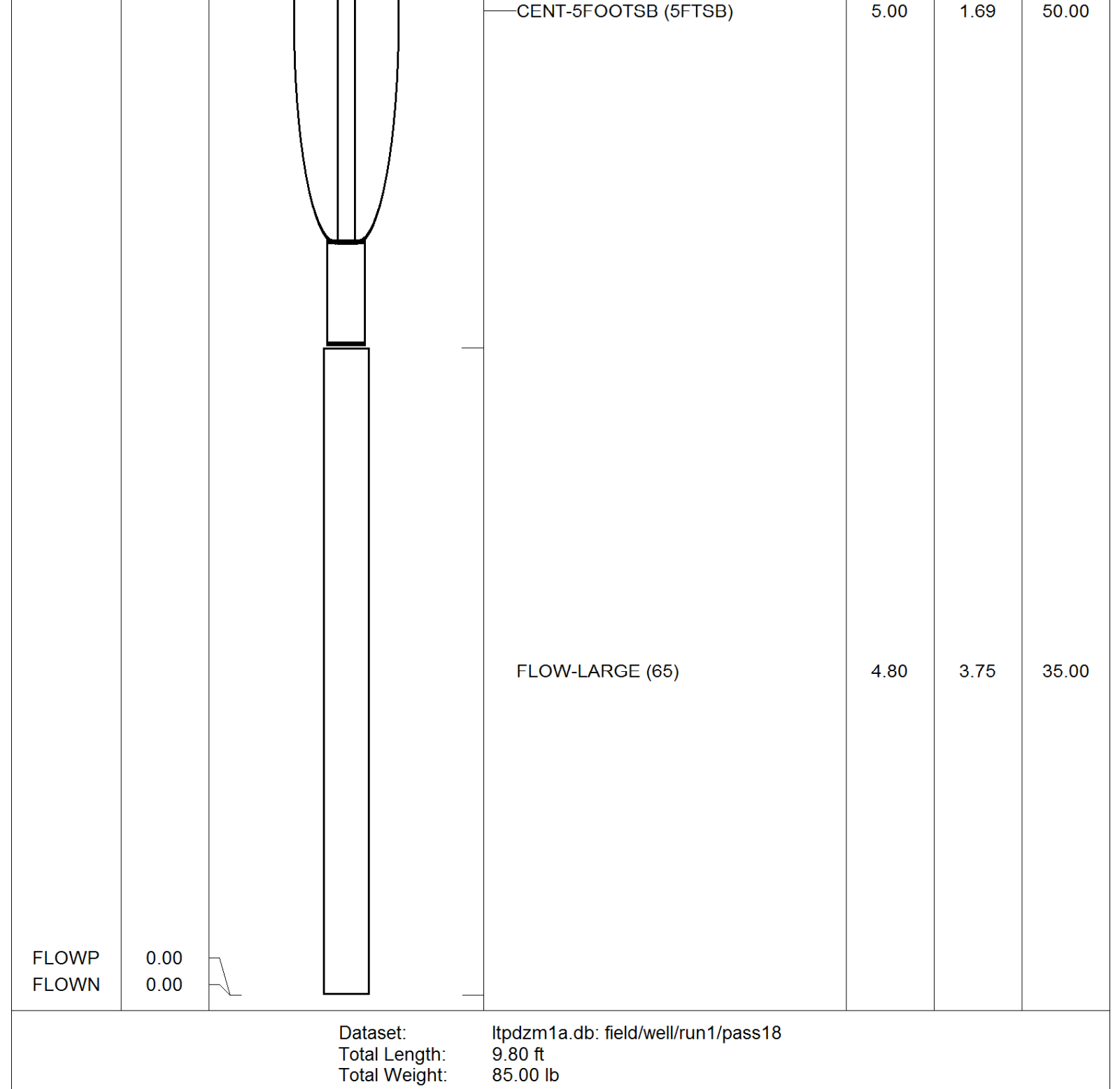
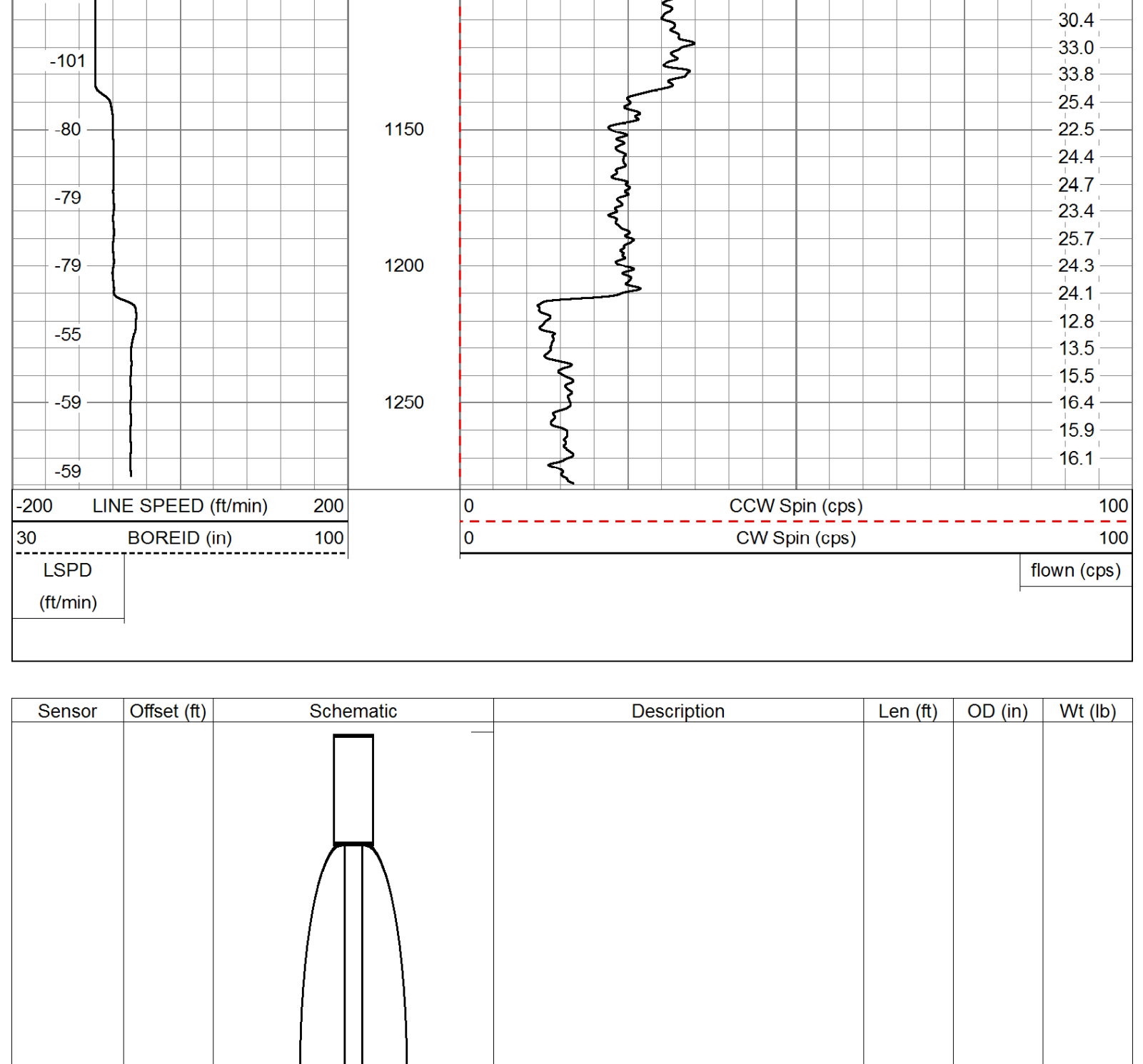
DYNAMIC LINE SPEED		0		DYNAMIC (cps)		150	
(ft/min)		-200		0		STATIC (cps)	
0		STATIC LINE SPEED (ft/min)		-200		150	
30		X-CALIPER (in)		10		flows	
30		Y CALIPER (in)		10		DYNAMIC	
30		BIT SIZE (in)		10		(cps)	


Line Speeds



Dataset Pathname: pass18			
Presentation Format: flow			
Dataset Creation: Thu May 17 19:21:45 2012 by Log VER_5.3			
Charted by: Depth in Feet scaled 1.600			
-200	LINE SPEED (ft/min)	200	0
30	BOREID (in)	100	0
LSPD		CCW Spin (cps)	
(ft/min)		CW Spin (cps)	
		flown (cps)	

(r/min)
-101
-100



O.D. 3.75 in	
	Company FP&L