

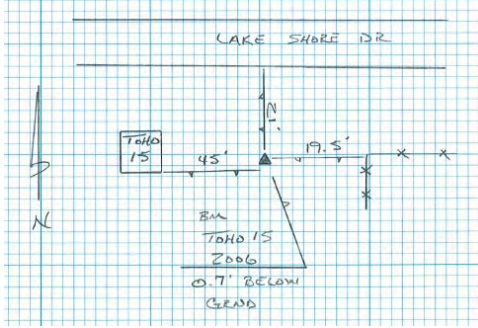




<b>Site Name</b> TOHO15 GW1		<b>Date of Field Work</b> June 30, 2015
<b>Party Chief</b> Strickland/Clanton	<b>Field Book Name/Number</b> MISC FB # 6X	<b>Page Number</b> 23
<b>Site Benchmark Name</b> TOHO 15 2006	<b>Benchmark Elevation (NAVD88)</b> 74.022	<b>Datum Offset to NGVD29</b> + 1.03
<b>Reference Elevation (NAVD 88)</b> 77.37'		<b>Existing Tag Elevation (Datum)</b> 78.40' (NGVD 29)
<b>Notes:</b> Ground elevation = 74.61ft (NAVD 88)		

Photographs:

<p><b>Overall Site</b></p> 	<p><b>Benchmark Close Up</b></p> 	<p><b>Benchmark Location</b></p> 
<p><b>Brass Tag Close Up</b></p> 	<p><b>Brass Tag + Reference Mark</b></p> 	<p><b>Staff Gauge</b> N/A</p>





08.21.2014 10:41

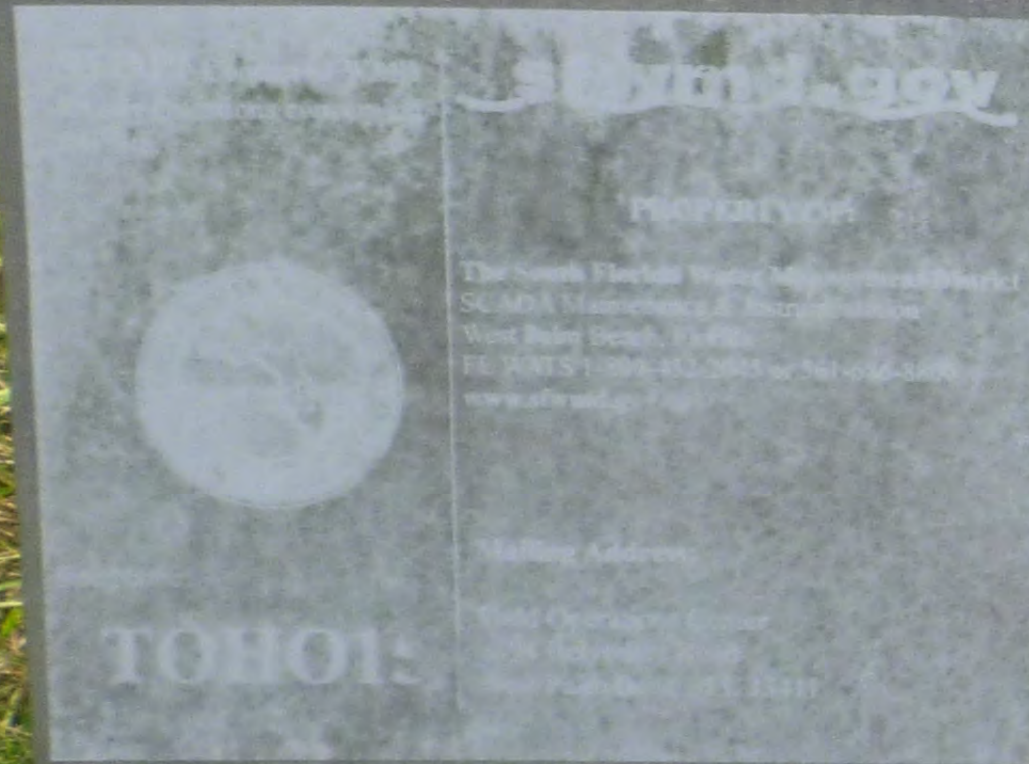




TONG 15  
78104 (NEVER 2)  
1.0L7-A, MAR 08  
K15  
8.4, 1.2, 1.0



TOH015





6.10.99

FD/DSY

---

TOHO 15

78.404 (NGVD '29)  
- 1.027' To NAVD '88

KIS

08.21.2014 10:39





404-81

20508

300V FT1

WARNING  
Failure to install  
properly may  
affect instrument  
and/or void the  
warranty

2021-11-10  
504-81  
304-81

20508

300V FT1

304-81

304-81

304-81

304-81

304-81

304-81

304-81

304-81

304-81

304-81

304-81

304-81

304-81

304-81

304-81

304-81

304-81

304-81

304-81

304-81

304-81

304-81

304-81

304-81

304-81

304-81

304-81

304-81

304-81

304-81

304-81

304-81

304-81

304-81

304-81

304-81

304-81

304-81

304-81

304-81

304-81

304-81

304-81

304-81

304-81

304-81

304-81

304-81

304-81

304-81

304-81

304-81

304-81

304-81

304-81

304-81

304-81





08.21.2014 10:39





S. FL. WATER MGT. DISTRICT  
STATION DESIGNATION

T 0 H 0 1 5



YEAR 2006

SURVEY  
DO NOT DISTURB



STN TOH015

GW

ELEV. 77.37

DATE 6.30.15

BY JS TC

NAVD 88

NGVD

OFFSET + 1.03



SEC	30	TWP	26	RGE	31
ESTABLISH	NAVD 88	ELEV @	TOHO 15	GW WELL	
STA	+	HI	-	ELEV	BM ELEV
BM				74.02	74.022
	5.59		0.724		NAVD 88
	1.18	79.61			
TOHO 15		2.24		77.37	
GIN					
GRND		5.0		74.61	
BM		5.59		74.02	

STRICKLAND  
CLANTON

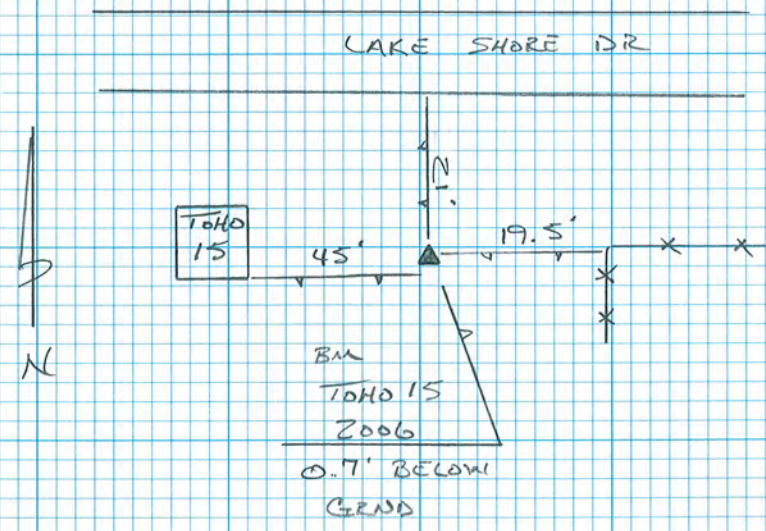
COMMENTS

BM TOHO 15 2006 SFWWD BRASS DISK GOOD COND

TOHO 15 GW 2" PVC PIPE E. SIDE

GRND @ WELL S. SIDE

BM TOHO 15 2006







## Survey Data Entry and Retrieval Application (SDERA) Print Output

**Control Point Search Results**

Derived Data - Denoted By: \*\*

Designation	TOHO15	Record State	ACCEPTED
NGS PID		Date Entered/Updated	06/27/2009
Project Name	TOHO 15 WELL SITE	Status	
Updated By	ATLAS DATA LOAD	Type	H/V
Party Chief		Date Established	01/01/2006
Monument Set By	KEITH & SCHNARS PA	Section	30
County	OSCEOLA	Range	31
Township	26	Offset (29 to 88)	
Quadrangle	ST CLOUD SOUTH	CCR Link	
NGS Source BM			
Ctrl Pt Source(s)			

<u>Horizontal</u>	<u>NAD 1927</u>	<u>NAD 1983</u>	<u>Vertical</u>	<u>NGVD 1929</u>	<u>NAVD 1988</u>
Latitude		28 11 15.8	Class		
Longitude		81 15 31.9	Order		3
Northing(Y)		1401043.0	Elevation	75.049	74.022
Easting(X)		572778.0	Measurement Unit	Feet	Feet
Class					
Order					
NAD83 Adj Year					

**Field Book**

1156

**Field Book Pages**

44-52

**Stamping**

TOHO15/2006

**How to Reach****Description**

THE BENCH MARK IS LOCATED 4.4 MILES SOUTH OF SAINT CLOUD. TO REACH THE MARK FROM THE INTERSECTION OF US 192 AND VERMONT AVENUE IN SAINT CLOUD, TRAVEL SOUTH ALONG VERMONT AVENUE, A DISTANCE OF 4.8 MILES (VERMONT AVENUE WILL TURN ONTO CANOE CREEK ROAD) TO DEER RUN ROAD. THEN TRAVEL EAST ALONG DEER RUN ROAD, A DISTANCE OF 1.6 MILES TO PACKARD STREET THEN TRAVEL NORTH ALONG PACKARD STREET A DISTANCE OF 0.4 MILES TO LAKE SHORE DRIVE. THEN TRAVEL WEST ALONG LAKE SHORE DRIVE 0.1 MILE TO THE MARK BEING ON THE SOUTH SIDE OF THE ROAD. THE MARK IS 21 FOOT FROM THE SOUTH EDGE OF PAVEMENT, AND 48 FOOT SOUTH EAST FROM THE WELL STRUCTURE. THE STATION IS A SOUTH FLORIDA WATER MANAGEMENT DISTRICT BRASS DISK SET IN CONCRETE





MONUMENT  
STAMPED TOHO 15/2006.

**DISCLAIMER:**

The South Florida Water Management District (hereinafter referred to as the DISTRICT ) shall not be held liable for improper or incorrect use of the data, information, apparatus, products, processes or materials described and/or contained herein. These data, information, apparatus, products, processes, materials and related graphics are not legal documents and are not intended to be used as such. The user hereby recognizes that the information, data, apparatus, products, processes and materials are dynamic and may change over time without notice. However, the DISTRICT makes no commitment to update the information, data, apparatus, products, processes or materials contained herein.