

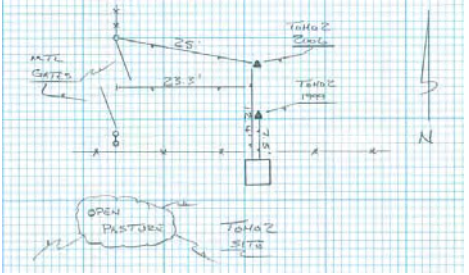




Site Name TOHO2 GW1		Date of Field Work July 14, 2015
Party Chief Strickland/Clanton	Field Book Name/Number MISC FB # 6X	Page Number 29
Site Benchmark Name TOHO2 2006	Benchmark Elevation (NAVD88) 64.634ft	Datum Offset to NGVD29 + 1.03
Reference Elevation (NAVD 88) 68.37ft		Existing Tag Elevation (Datum) 69.40ft (NGVD 29)
Notes: Ground elevation = 65.15ft (NAVD 88). Corpscon v6.0.1 offset = +1.03, Field offset = +1.03		

Photographs:

<p>Overall Site</p> 	<p>Benchmark Close Up</p> 	<p>Benchmark Location</p> 
<p>Brass Tag Close Up</p> 	<p>Brass Tag + Reference Mark</p> 	<p>Staff Gauge N/A</p>





50A
MODEL PS-12400 NB
12 Volt 40.0Amp.Hr.
RU
www.powersoft.com



24 AWG 6 9 ALUM BOC 300V ESR4011

PROPERTY OF:

South Florida Water Management District

RTU Name: TOHO2

Contact SCADA: 561-682-2047



TOW 0 2 W
ELEV. 69.40
DATE 9 26 07
BY WOOLPERT
NAVD NGVD 29

EGORIN



STN TOH02

GW

ELEV. 68.37

DATE 7.14.15

BY JS TC

NAVD 88

NGVD

OFFSET + 1.03

S. FL. WATER MGT. DISTRICT
STATION DESIGNATION
TOH 0 2
YEAR 20 0 6
DO NOT DISTURB
SURVEY MARKER

FLA. WATER MANAGEMENT DISTRICT
SURVEY
BM
TOHO 2
OS MARKER 151
1999



TOH02

Benchmark
TOH02



**Benchmark
TOHO2 2006**

SEC 3 TWP 27 RGE 30

ESTABLISH NAVD 88 ELEV @ TOHO 2 GW WELL

STA	+	HI	-	ELEV	BM ELEV
BM				64.63	64.634
	5.42				NAVD 88
	1.35	70.05			
GW			1.68	68.37	
GRND			4.9	65.15	
BM		5.01		65.04	
		1.76			
BM		5.42		64.63	64.63
		1.35			

STEICKLAND
CLANTON

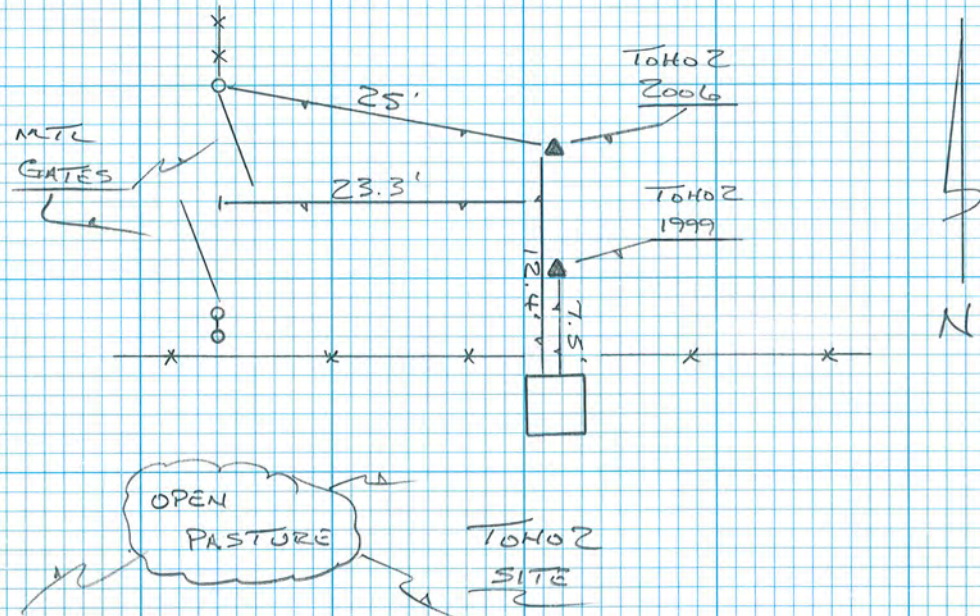
COMMENTS

BM TOHO 2 2006 FD SFWMND BRASS DISK GOOD COND
0.3' BELOW GWS 12.4' N of WELL 8.4' N of E/W FENCE
25' SE of N GATE POST TO THE W. 23.3' E of DOUBLE MTL GATE
TOHO 2 GW 2" PVC PIPE "X" SW SIDE

GROUND @ WELL

BM TOHO 2 1999 F'S SFWMND ALUM DISK GOOD COND FLUSH M/GW

BM TOHO 2 2006 SFWMND BRASS DISK



SOUTH FLORIDA WATER MANAGEMENT DISTRICT



Survey Data Entry and Retrieval Application (SDERA) Print Output

Control Point Search Results

Derived Data - Denoted By: **

Designation	TOHO22006	Record State	ACCEPTED
NGS PID			
Project Name	TOHO 02 WELL SITE	Date Entered/Updated	07/14/2015
Updated By	jstrickl	Status	GOOD
Party Chief		Type	V
Monument Set By	KEITH & SCHNARS PA	Date Established	01/01/2006
County	OSCEOLA COUNTY	Section	3
Township	27	Range	30
Quadrangle	ST CLOUD SOUTH	Offset (29 to 88)	
NGS Source BM		CCR Link	
Ctrl Pt Source(s)			

<u>Horizontal</u>	<u>NAD 1927</u>	<u>NAD 1983</u>	<u>Vertical</u>	<u>NGVD 1929</u>	<u>NAVD 1988</u>
Latitude		28 10 18.7	Class		
Longitude		81 18 26.0	Order	3	3
Northing(Y)		1395312.0	Elevation	65.661	64.634
Easting(X)		557185.0	Measurement Unit	Feet	Feet
Class					
Order					
NAD83 Adj Year					

Field Book
1156

Field Book Pages
31-38

Stamping
TOHO 2 2006

How to Reach

Description
 7/14/2015 SFWMD TIES TO BENCH MARK THE BENCH MARK IS LOCATED 12.4 FEET NORTH OF THE WELL 25 FEET EAST SOUTH EAST OF THE NORTH GATE POST TO THE WEST. JNS.**
 THE BENCHMARK IS LOCATED 5.5 MILES SOUTHWEST OF SAINT CLOUD TO REACH THE MARK FROM THE INTERSECTION OF U.S. 192 AND VERMONT AVE. IN SAINT CLOUD TRAVEL SOUTH ALONG VERMONT AVE. A DISTANCE OF 4.8 MILES (VERMONT AVE. WILL TURN INTO CANOE CREEK RD.) TO FRIARS COVE RD. THEN TRAVEL 1.6 MILES WEST ALONG FRIARS COVE RD. TO A GATE THAT HAS AN ADDRESS OF 3340. THEN TRAVEL 0.1 MILES SOUTH FROM THE GATE. THE MARK IS 5 NORTH OF 4 BARBED WIRE FENCE, AND 10 NORTH OF THE WELL STRUCTURE.
 THE STATION IS A SOUTH FLORIDA WATER MANAGEMENT DISTRICT BRASS DISK SET IN CONCRETE MONUMENT
 STAMPED TOHO 2 / 2006.

DISCLAIMER:
The South Florida Water Management District (hereinafter referred to as the DISTRICT) shall

not be held liable for improper or incorrect use of the data, information, apparatus, products, processes or materials described and/or contained herein. These data, information, apparatus, products, processes, materials and related graphics are not legal documents and are not intended to be used as such. The user hereby recognizes that the information, data, apparatus, products, processes and materials are dynamic and may change over time without notice. However, the DISTRICT makes no commitment to update the information, data, apparatus, products, processes or materials contained herein.