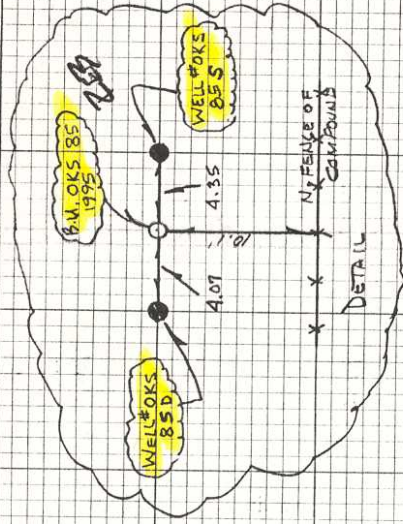


COMMENTS



B. M. OKS - 85: 1295 TO REACH FROM THE INTERSECTION OF COUNTY RD 700A AND COUNTY RD. 724 GO EAST 2.0 MILES ON COUNTY RD. 724 TO A SHELL RD TO SOUTH. THEN GO SOUTH ON SHELL RD 0.8 MILES TO A GATE ON E. SIDE OF SHELL RD. THEN GO THRU GATE AND CONTINUE EAST ON GRASS COVERED RD 0.45 MILES TO A FENCED IN COMPOUND AND STATION LOCATION. STATION LOCATION IS ON THE NORTH SIDE OF E. M. OKS - 85 1995 AS ABOVE THE N. FENCE OF COMPOUND

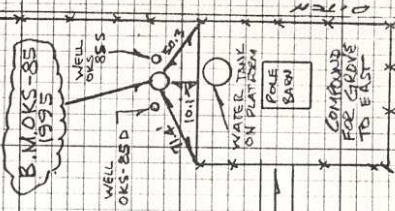
2.0 MILES

COUNTY RD 724

SEC 6
TWP 35
R6E 34

SHELL RD
TO C.M. RUCKSBARY
0.8 MILES

0.45 MILES



COUNTY RD. 700-A

85