

Levels Cont'd For Dams of District #1

STA	+	HI	-	Level	Bm
					30.37 W.D. 1929
	7.02 0.24	37.39			
1A			4.72 2.54	32.67	
	4.00 3.26	30.67			
1B			4.22 3.04	32.45	
	4.15 3.11	30.00			
1C			4.00 2.66	32.00	
	2.49 4.77	34.49			
1D			4.22 3.04	30.27	
	3.01 3.65	33.88			
1E			3.67 3.59	30.21	
	5.00 2.26	35.21			
1F			4.15 3.11	31.00	
	5.98 1.28	37.04			

Levels Cont'd Pg. 13

Comments

U.S.G.S. Bm 58 WTM AS PER DESCRIP. SHEET,  
AS PER DENI ASAC.

58 WTM 1952  
NOW IN DB

12-19-02

MT Hudson  
& Molasse!



LEVELS CONT'D Pg. 12

STA	+	HT	-	Elev.	Bm
		37.04			
IP			5.57 1.09	31.47	
	4.73 2.53	36.20			
IP			4.59 2.67	31.61	
	4.79 2.47	36.40			
IP			4.81 2.45	31.59	
	4.41 2.85	36.00			
Bm			6.33 0.93	29.67	29.67

RETURN LEVELS

	6.37 0.89	36.04			
IP			4.45 2.81	31.59	
	4.79 2.47	36.38			
IP			4.79 2.47	31.59	
	4.75 2.51	36.34			
IP			4.86 2.40	31.48	
	5.74 1.52	37.22			

RETURN LEVELS CONT'D Pg. 13

Comments

SET Bm "LC1" A S.F.D.M.D. ALUM CAP IN A 1/4" I.P.I.E  
 SET IN CONC. 0.3' BELOW GROUND STAMPED "Bm LC1 1998"  
 MARK IS 8.6 MILES WEST OF THE SET. OF SR 29 &  
 SR 82. TO REACH, FOLLOWED TRAIL GATE @ ENTRANCE TO  
 DIXIE FARM GROVE. MAKE SHARP LEFT, HEADING  
 EAST, 0.7 MI. TO N.E. COR. OF GROVE. @ A 90° BEND W  
 TO THE SOUTH, CONTINUE SOUTH ON RD 0.4 MI. TO  
 STA. LOCATION @ RIGHT. @ JAIL SITE, # WFS.  
 MARK IS SET IN THE E. OF A DIRT RAMP FROM  
 THE ROCK RD. TO TOP OF A RETENTION LEVEE  
 21.1' JUST OF A METAL D.F. POST IN  
 SEC. 35 TOP ASS. RAC. 27E.



Return Levels Cont'd Pg. 13

STA	+	ft	-	Equal	Bm
		31.22			
TP			0.12 1.14	31.10	
	4.04 3.22	35.14			
TP			4.93 2.33	30.21	
	3.01 3.05	33.92			
TP			4.18 3.08	29.04	
	5.00 2.26	34.64			
TP			4.02 2.64	30.02	
	4.84 2.42	34.80			
TP			3.77 3.49	31.09 <del>3.49</del>	
	5.06 2.20	36.15 <del>36.55</del>			
TP			4.31 2.95	31.84 <del>32.24</del>	
	5.68 1.50	37.52 <del>37.92</del>			
Bm			7.15 0.11	30.37 <del>30.77</del>	30.37

END Return Levels

LEVELS CONT'D Pg. 15

Comments

HT Hudson  
φ Mollisat

Bm 58 DTM Pg. 12 (error 0.00)

*[Red signature]*



STA	LEVELS	From	To	Point	To	BM	LEZ
	+	HI	-	ELEV.			
							32.24
TP	3.90	36.14					
	3.36						
TP			4.58		31.56		
			2.68				
TP	4.16	35.72					
	3.10						
TP			4.42		31.30		
			2.84				
TP	3.45	34.75					
	3.81						
TP			3.89		30.86		
			3.37				
TP	4.71	35.57					
	2.55						
TP			4.49		31.08		
			2.77				
TP	4.00	35.08					
	3.26						
TP			4.05		31.03		
			3.21				
TP	3.97	35.00					
	3.29						
TP			4.13		30.87		
			3.13				
TP	4.17	35.04					
	3.09						
TP			4.52		30.52		
			2.74				
TP	4.26	34.78					
	3.00						
TP			4.67		30.11		
			2.59				
TP	4.20	34.31					
	3.06						

Comments

A 1" CUT W/ 1/2 Bolt @ BASE OF FPL TRANSMISSION  
POLE AS PER T&E & ASSOC. DEPT. SHEET.  
DESIGNATION "TBM 30-15"  
AS PER DEPT ASSOC.

J. J. Moellisse!  
& Hudson

Bob



Levels Cont'd Pg. 15

STA	+	HI	-	Elev.	Bm
		34.31			
R			4.54 2.72	29.77	
	4.99 2.27	34.76			
TP			4.21 3.05	30.55	
	4.93 2.33	35.48			
TBM			5.45 1.81	30.03	30.03

Return Levels

TBM	5.39 1.87	35.42			
TP			5.00 2.26	30.42	
	4.32 2.94	34.74			
TP			4.99 2.27	29.75	
	4.51 2.75	34.26			
TP			4.16 3.10	30.10	
	4.70 2.56	34.80			
TP			4.28 2.98	30.52	
	4.40 2.86	34.92			

Return Levels Cont'd Pg. 17

Comments

TOP OF 1 1/4" I.P. in concrete, 0.3' below ground surface.



Return Levels Cont'd from PG 16

STA	+	M.I.	-	Elev.	B.M.
		34.92			
TP			4.05 3.21	30.87	
	4.23 3.03	35.10			
TP			4.12 3.14	30.98	
	4.00 3.26	34.98			
TP			3.98 3.28	31.00	
	4.58 2.68	35.58			
TP			4.83 2.43	30.75	
	4.10 3.16	34.85			
TP			<del>3.64</del> 3.62	31.21	
	4.48 2.78	35.69			
TP			4.16 3.10	31.53	
	4.55 2.71	36.08			
T.B.M.			3.84 3.42	32.24	32.24 ✓

End Return Levels

Comments

"TBM 30-15" PG-15 (Error 0.00')

*[Handwritten signature]*



STA	LEVELS	CONT'D	To Bm	LC2	To LC3	Bm
		HI				
						30.03
	4.41 2.85	34.44				
Bm			4.38 2.88	30.06		30.06
	4.74 2.52	34.80				
IP			4.75 2.51	30.05		
	4.73 2.53	34.78				
IP			4.53 2.73	30.25		
	4.72 2.54	34.97				
IP			4.82 2.44	30.15		
	4.55 2.71	34.70				
IP			4.23 3.03	30.47		
	4.72 2.54	35.19				
IP			4.17 3.09	31.02		
	4.45 2.81	35.47				
IP			4.50 2.76	30.97		
	3.98 3.28	34.95				

LEVELS CONT'D P. 19

COMMENTS  
TOP OF 1 1/4" I.P. IN CONC. P. 10

{ NOTE: CAP WAS NOT SET IN I.P. WHEN WE ARRIVED. LEVELS HAD TO SET UP, OBTAIN HI, SET CAP THEN - SHOT ON Bm }

Bm LC2 A SIMON ALUM CAP IN A 1 1/4" I.P. SET IN CONC. 0.3' BELOW GROUND STAMPED "Bm LC2 1998" MARK IS 1.48 mi. SW ON MAIN ENTRANCE RD TO OFFICE @ WILDCAT ESTATES (CO-OP 3 AREA), 0.16 mi. WEST OF JCT. OF HWY 29 & 82. IN W. EDGE OF RD IN LINE W/ THE PROPOSED E OF A FARM DITCH LEADING EAST. SEC. 3 TDP, AUS R66 27E



308 FB 83 11-12-93

Levels Cont'd Fe. 12. 18

STA	+	HE	-	Elev	Bm
		34.95			
IP			3.61 3.65	31.34	
	4.49 2.77	35.83			
IP			4.36 2.90	31.47	
	4.01 3.25	35.48			
IP			4.87 2.39	30.61	
	6.30 0.96	30.91			
IP			5.96 1.30	30.95	
	4.40 2.86	35.35			
IP			4.13 3.13	31.22	
	4.40 2.86	35.62			
Bm			5.57 1.69	30.05	30.045 (ADS)
		Retired	Levels		
	5.49 1.77	35.54			
IP			4.32 2.94	31.22	
	4.16 3.10	35.38			

Retired Levels Cont'd Fe. 20

308 FB 83 11-12-98

Comments

Wt Hudson  
T. GAYMAN  
P. MORRISSE!

Bm LCB SET, A S.F.W.M.P. ANOM. CAP IN A 1 1/4" I.P. SET IN CONC. 0.14' BELOW GROUND. STAMPED "Bm LCB 1998" TO REACH: FE. THE SET. OF MAY 29<sup>th</sup> 82 GO WEST ON 82 2.6 mi. TO ENTRANCE TO D. WEST FARMS (GO. 073 GATE). PROCEED SOUTH ON ENTRANCE 25. 2.25 mi. TO MAIN OFFICE. MARK IS IN WEST EDGE OF Bm. DIRECTLY ACROSS FE. OFFICE IN SEC. 3 TWP. 45S R4E 27E



Ripen Levels Cont'd Feb. 19

SFA	+	Hi	-	equiv.	Bun
		35.38	4.45		
10			2.81	30.93	
	0.53 0.73	37.40			
10			6.88 0.38	30.58	
	4.82 2.44	35.40			
10			3.97 3.29	31.43	
	4.22 3.04	35.05			
10			4.29 2.97	31.36	
	3.60 3.66	34.70			
10			4.00 3.26	30.96	
	4.40 2.86	35.36			
10			4.41 2.85	30.95	
	4.11 3.15	35.06			
10			4.39 2.87	30.67	
	4.01 3.25	34.68			
			4.30 2.96	30.38	
	4.48 2.78	34.86			

Ripen Levels Cont'd Feb. 21

Comments

11 HUDSON  
 1 GRAHAM  
 6 MORRISSE!



RETURN LEVELS COND FB 20

STA	+	HI	-	ELEV.	Bm
		34.86			
IP			4.28 2.98	30.58	
	4.06 3.20	34.64			
IP			4.59 2.67	30.05	
	4.75 2.51	34.80			
Bm			4.73 2.53	30.07	30.06

END RETURN LEVELS

LINK LOOP FB LC3, THRU LC4, 5, 6, 7, 8, 9. RETURNING TO LC3.

					30.05 (ADJ)
IP	5.26 2.00	35.31			
			4.48 2.78	30.83	
IP	4.45 2.72 75	35.34			
			3.17 4.09	32.17	
	5.83 1.43	38.00			

LEVELS COND FB 22

Comments

Bm LC2 FB 18 (error 0.01')

Bm LC3 FB 19

I BUMPED, REREAD TURN.



306      FB 83      11-18-93

Likals Cont'd F. P. 21

STA	+	LI	-	Elev.	Bm
		38.00			
IP			4.64 2.62	33.36	
	4.67 2.59	38.03			
IP			4.41 2.85	33.62	
	4.53 2.73	38.15			
IP			4.50 2.76	33.65	
	4.66 2.60	38.31			
IP			4.50 2.76	33.81	
	4.62 2.64	38.43			
Bm <sup>2</sup>			5.50 1.76	32.93	32.93
	5.19 2.07	38.12			
IP			4.60 2.66	33.52	
	4.55 2.71	38.07			
IP			4.35 2.91	33.72	
	4.69 2.57	38.41			
IP			5.10 2.16	33.31	
	4.70 2.56	38.01			

Likals Cont'd F. P. 23

308      FB 83      11-18-93

22

Comments

W HUDSON  
 ^ MORRISSE!  
 O GRAHAM

Bm LCA SET, A S.F.D.M.D. ALUM CAP IN A 1/4" IP SET IN CONC. 0.3' BELOW GROUND. STAMPED "Bm LCA 1998" MARK IS 0.25 M. SW OF CO-OP3 OFFICE, ON RIGHT TOP OF LEVING RD. IN SEC 9, TWP 40S, R. 20E

Co-OP3 OFFICE

GRAVE

SHILL 22 ARCADE

RETENTION POND

DIRT ROAD

GRASS SWAMPS

{ Bm LCA }



LEVELS CONT'D Pg. 22

STA	+	HC	-	ELEV.	Bm
		38.01			
1A			4.46 2.80	33.55	
	4.67 2.59	38.22			
1A			4.71 2.55	33.51	
	4.69 2.57	38.20			
1A			4.59 2.67	33.61	
	4.23 3.03	37.84			
1A			4.34 2.92	33.50	
	4.51 2.75	38.01			
1A			4.78 2.48	33.23	
	4.64 2.62	37.87			
Bm			4.41 2.85	33.46 ✓	
	4.33 2.93	37.79			
1A			4.02 3.24	33.77	
	4.52 2.74	38.29			
1A			4.23 3.03	34.06	
	4.38 2.88	38.44			

LEVELS CONT'D Pg. 24

Comments

H HUDSON  
 B GERRARD  
 T MORRISSE!

Set Bm L5, a s.f.w.m.d. Alum cap in a 114" E.P.  
 in center 0.3 below grade. STAMPED Bm L5. MARK  
 IS 0.6 MI. SW of L4, in Rt. SHOULDER of L4  
 & A SHARP CURVE in Rd. in sec 9, Twp 40s, R2E 27E



Levels Cont'd Pg 23

STA		HE		Elev.	Bm
		38.44			
TP			4.09 3.17	34.35	
	4.13 3.13	38.48			
TP			4.72 2.31	33.76	
	4.61 2.65	38.37			
TP			4.39 2.87	33.98	
	4.66 2.60	38.44			
TP			4.86 2.40	33.78	
	4.61 2.65	38.39			
TP			4.34 2.92	34.05	
	4.30 2.96	38.35			
TP			4.16 3.10	34.19	
	4.54 2.72	38.73			
Bm <sup>25</sup>			5.52 1.74	33.21	33.22 (ADS)
	4.97 2.29	38.18			
TP			4.43 2.84	33.75	
	4.48 2.78	38.23			

Levels Cont'd Pg. 25

Comments

HT HUDSON  
T GRAHAM  
O MORGAN!

Bm LCB SET, A S.F.W.M.D. ALUM CAP W/ 1/4" I.P.  
IN CONC. 0.3 BELOW GRD. STAMPED Bm LCB 1998  
MARK IS 0.58' HI. OUT OF LCB IN E-W TOP OF LEVER  
O. OPP. OF WEL # WFA IN SEC 15, TOP 4CS, R6E 27E

*[Handwritten signature]*



Levels Cont'd Fr. 18, 24

STA	+	Hz	-	cont.	Bar
		38.23			
1A			3.84 3.42	34.39	
	0.79 6.47	35.18			
1A			4.42 2.84	30.76	
	4.25 3.01	35.01			
1A			4.63 2.63	30.38	
	4.18 3.08	34.56			
1A			4.36 2.90	30.20	
	4.44 2.32	34.64			
1A			4.90 2.36	29.74	
	4.85 2.46	34.54			
1A			4.73 2.53	29.81	
	4.79 2.47	34.60			
1A			4.86 2.40	29.74	
	4.74 2.52	34.48			
1A			4.08 3.18	30.40	
	4.65 2.61	35.05			

Levels Cont'd 2.20

Comments

W. HUDSON  
A. GRAHAM  
O. MORRISSE!



LEVELS CONT'D FR. 25

SP	+	HC	-	CHG.	Bm
TP		35.05			
			4.52		
			2.74		30.58
	4.92				
	2.34	35.45			
TP			4.16		
			3.10		31.29
	4.30				
	2.90	35.59			
TP			4.21		
			3.05		31.38
	1.41				
	2.85	35.79			
TP			4.55		
			2.71		31.24
	4.58				
	2.68	35.82			
Bm <sup>93</sup>			5.79		
			1.47		30.03
	4.81				30.04
	2.45	34.84			(ADS)
TP			4.20		
			3.00		30.64
	4.12				
	3.14	34.70			
BM <sup>41</sup>			2.90		
			4.30		31.80
	4.20				31.81
	3.00	36.06			(ADS)
TP			0.23		
			0.83		29.63
	4.90				
	2.30	34.59			

LEVELS CONT'D FR. 27

Comments

NY HUDSON  
 T GRAYSON  
 & ADRESSE!

SEC. 15, TWP AUS. Rte 27E STAMPED "Bm 147 1998"

Bm 147 SET, A S.F.W.M.D. ALUM CAP IN A 1/4" IR PIPE IN CONC. 0.3' BELOW GROUND. TO REACH: FR CO. OF B OFFICE, GO SOUTH 1/2 800' TO EAST CORNER RD., CONTINUE EAST 0.83 MI. TO SET. OF P LOCAL RD. HEADING SOUTH, GO SOUTH ON RD 20. 0.7 MI. TO A DITCH & A SHARP CURVE SW IN RD. MARK IS 1/2 800' SW @ A DIRT RAMP @ WHERE RD. BENDS BACK SOUTH. MARK IS 1/2 E. OF RAMP IN N. EDGE OF RD.

Bm 147A SET A S/B IR 1/2 RD PL. CAP 800' E. OF Bm 147. IN E. EDGE OF RD. IN LINE W N. EDGE OF WATER OF FARM DITCH



LEVELS CONTD FB 26

STA	+	HI	-	ELVD.	Bm
		34.59			
12			4.43 2.33	30.16	
	4.80 2.40	35.02			
12			4.84 2.42	30.18	
	4.48 2.78	34.60			
12			4.32 2.94	30.34	
	4.72 2.54	35.06			
12			4.31 2.95	30.75	
	3.89 3.37	34.64			
12			4.19 3.07	30.45	
	4.60 2.66	35.05			
12			4.40 2.80	30.59	
	4.49 2.77	35.08			
12			4.83 2.43	30.25	
	4.52 2.74	34.77			
Bm			4.28 2.98	30.49	30.50 ✓
	6.40 0.86	36.89			

Levels CONTD FB 28

Comments

W Hudson  
1. Moressey  
2. GARDNER

Bm LCB 52, A S.W.M.D. Alum cap in a 1/4" I.P. in case 0.3' below GEND. PL. OUTLINE. Go to 800 TO EAST CURVE INTO GO C. 0.83 MI. TO SE. OF SOUTH BND. 26. 20. GO SOUTH ON 26. 20. 0.91 MI. TO STA. LOCATION ON LEFT. MARK IS 11.0' SW OF ROAD C, 4.10' W OF METAL W.P. POST. & JUST SOUTH OF DOUBLE DITCH. STAMPED "Bm LCB 1990"

*[Handwritten signature]*







LEVELS CONTD F.B. 28

SIA	+	HC	-	ELVD	Bm
		35.40			
19			5.25 2.01	30.15	
	4.97 2.29	35.12			
19			4.18 3.08	30.94	
	4.34 2.92	35.28			
19			3.81 3.45	31.47	
	4.28 2.98	35.75			
<sup>02</sup> Bm			5.80 1.46	29.95	29.965 (ADD)
	5.47 1.79	35.42			
19			4.22 3.04	31.26	
	4.27 2.59	35.47			
19			4.58 2.68	30.89	
	4.52 2.74	35.41			
19			4.60 2.66	30.81	
	4.78 2.48	35.59			
19			4.81 2.45	30.78	
	4.60 2.66	35.38			

LEVELS CONTD F.B. 30  
~ ~ ~ ~ ~

COMMENTS

H. HODSON  
T. MORRISSE  
P. GIBBARD

NOTE: ADJ. OF LCG MADE BY AMOUNT OF ERROR PER TURN,  
(0.0003), X<sup>o</sup> NO. OF TURNS TO Bm.

Bm LCG SET. A S.F.W.M.D. ALUM COP. IN A 1 1/2" I.P. SET IN CONC. O.B. BELOW GROUND STAMPED "Bm LCG 1998" TO REACH: FE OFFICE. GO SOUTH = ROAD TO EAST BEND IN RD., CONTINUE EAST 0.83 MI. TO SET OF SOUTH BND RE RD AND SET LOCATION. MARK IS IN THE N. EDGE OF THE E/W. B. IN LINE W/ THE PROPOSED E. OF THE N/S RD. IN SEC. 3, T4P 40S. R40 27E

Handwritten signature or initials.



LEVELS CONTD FR R. 29

SP	-	LE	-	Level	Bm
		55.38			
TP			4.76 2.50	30.62	
	4.76 2.50	55.38			
TP			4.106 2.100	30.72	
	4.05 2.61	55.37			
TP			4.08 2.58	30.69	
	5.10 2.16	55.79			
TP			2.00 5.20	33.73	
	1.24 6.02	34.97			
TP			4.05 3.21	30.92	
	4.32 2.94	35.24			
TP			4.37 2.87	30.87	
	4.24 3.02	35.11			
TP			4.52 2.74	30.59	
	4.40 2.86	34.99			
TP			4.23 3.03	30.76	
	4.31 2.95	35.07			
TP			5.04 2.22	30.03	30.05

END LEVEL LOOP

Comments

AT HUDSON  
A GREENWAY  
of MORRISSE!

Bm 103 R. 19 (Elev 0.02') 5.5 mile loop

*[Handwritten signature]*



(31)

Bcb

FB 88

11-20-78

LEVELS CONTD FR LCG TO LC10

STA	+	HE	-	Elev	Bm ✓
Bm	5.36 1.90	35.33			29.97 (ADS)
19			4.16 3.10	31.17	
19	4.70 2.56	35.87			
19			4.67 2.59	31.20	
19	4.64 2.62	35.84			
19			4.71 2.55	31.13	
19	4.63 2.63	35.76			
19			4.49 2.77	31.27	
19	5.24 2.02	30.51			
19			4.72 2.54	31.79	
19	4.46 2.80	36.25			
19			4.72 2.54	31.53	
19	4.30 2.96	35.83			
19			4.92 2.34	30.91	
19	4.81 2.45	35.72			

LEVELS CONTD TO 32  
~ ~ ~

Bcb

FB 88

11-20-78

(32)

Comments

Bm LCG 7m 29

H Hudson  
A GRAYSON  
D MORGAN!

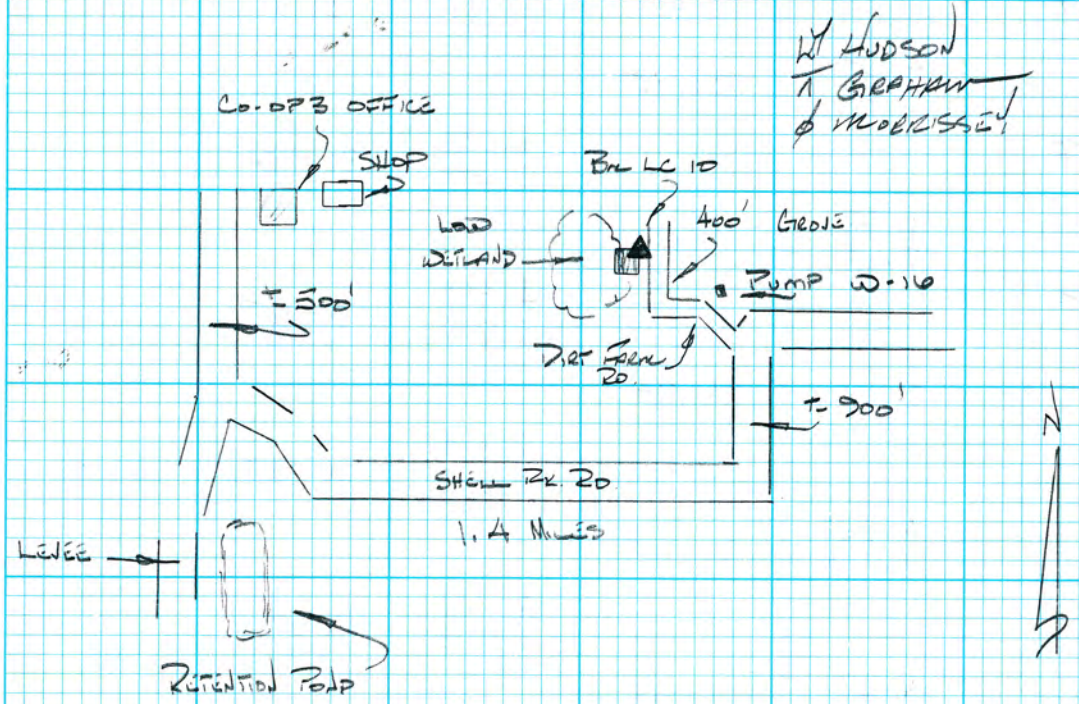


LEVELS CONTD TO P. 31

STA	+	HE	-	Elev.	Bm
		35.72			
TP			4.69 2.57	31.03	
	4.90 2.36	35.93			
TP			5.17 2.69	30.76	
	4.88 2.38	35.64			
TP			4.99 2.27	30.65	
	4.73 2.53	35.38			
TP			4.82 2.44	30.56	
	5.12 2.14	35.68			
TP			5.46 1.80	30.22	
	4.76 2.56	34.92			
Bm			2.93 4.33	31.99	32.00 (485)
		RETURN	LEVELS		
	2.89 4.37	34.88			
TP			4.66 2.60	30.22	
	5.41 1.85	35.43			

RETURN LEVELS CONTD TO P. 33

COMMENTS



W HUDSON  
T GRAHAM  
P MOORHEAD

Bm LC 10 SET A S.F.W. AND ALUM CAP SET IN TOP OF THE N.E. COR. OF A CONC. FUEL TANK CATCH BASIN @ A PUMP STA @ WELL # W-9 STAMPED "Bm LC 10 1998"

Handwritten signature or initials in red ink.



ROSEN LEVELS Fr. 76.82

STA	L	HT	-	Elev.	Bum
		35.63			
1A			5.12 2.14	30.51	
	4.69 2.57	35.20			
1A			4.68 2.58	30.52	
	5.14 2.12	35.00			
1A			4.99 2.27	30.67	
	5.37 1.89	30.04			
1A			5.05 2.21	30.99	
	4.50 2.70	35.55			
1A			4.48 2.78	31.07	
	4.67 2.59	35.74			
1A			4.24 3.02	31.50	
	4.69 2.57	36.19			
1A			4.42 2.84	31.77	
	4.60 2.60	30.43			
1A			5.22 2.04	31.21	
	4.40 2.80	35.67			

ROSEN LEVELS CONTD Pg. 34

Comments

At Hudson  
T. GRAYSON  
& MORRISSEY

*[Handwritten signature]*



RETURN LEVELS Fr. Pg 33

STA	+	HI	-	ELEV.	Bm
		35.107			
TP			4.63 2.63	31.04	
	4.73 2.53	35.77			
TP			4.71 2.55	31.06	
	4.72 2.54	35.78			
TP			4.66 2.60	31.12	
	4.21 3.05	35.33			
Bm			5.38 1.88	29.95	29.97 (205)

END RETURN LEVELS  
~ ~ ~

LEVELS TO DAVIS Pg. 35  
~ ~ ~

Comments

W HUDSON  
T GRADON  
Ø MORRISSE!

Bm LCG Pg. 29 (22202 0.02')

*[Red scribble]*



Levels To Well # DF3

STA	+	HI	-	LEVL.	Bm
	4.09 3.18	37.02			32.93
Bm			4.07 0.59	30.35	30.345 (ADS)
		<u>RETURN</u>	<u>LEVELS</u>		
	6.02 0.64	30.97			
Bm			4.03 4.07 3.23	32.94	32.93
		<u>END</u>	<u>LEVELS</u>		
					33.22
	4.07 3.19	37.29			
Bm			6.46 0.80	30.83	30.83
		<u>RETURN</u>	<u>LEVELS</u>		
	6.38 0.88	37.21			
Bm			3.99 3.28	33.22	33.22
		<u>END</u>	<u>LEVELS</u>		

Comments

Bm L4 P. 22

A 1" notch cut in top of 2" PVC well in a 8" PVC casting of well DF3

Bm ABOVE (error 0.01')

Bm L4 P. 24

A 1" notch cut in top of a 2" PVC well in a 8" PVC casting of well # DFA

Bm L4 ABOVE (error 0.00')

Handwritten signature or initials in red ink.



Levels To Well # DFU

STA	+	HI	-	incl.	Bm
	6.67	36.71			30.04 ✓ (ADP)
	0.59				

Bm			5.31 1.95	31.40	
----	--	--	--------------	-------	--

		<u>RETURN</u>	<u>LEVELS</u>		
	5.23 2.03	36.63			
Bm			6.59 0.67	30.04	30.04 ✓
		<u>END RETURN</u>	<u>LEVELS</u>		

Levels To Wells DF7 & DF10

Bm	3.94 3.32	35.75			31.81 ✓ (ADP)
IP			6.25 1.01	29.50	
	4.80 2.46	34.30			
IP			4.44 2.82	29.86	
	5.20 2.06	35.06			

Levels Cont'd P. 37

Comments

Bm LCT Pg. 26

A 1" JAPAN CUT IN THE N<sup>th</sup> TOP OF A 2" RC WALL IN A 8" RC CASTING OF WELL # DFU

Bm LCT ABOVE (ERROR 0.0)

Bm LCTA Pg. 26

*[Handwritten signature]*



LEVELS CONT'D FB 88

STA	+	HI	-	ELEV.	Bm
		35.06			
TP			4.07	30.99	
			2.59		
	4.41	34.65			
	2.85				
TP			4.98	29.67	
			2.28		
	4.64	34.46			
	2.62				
TP			4.84	29.62	
			2.42		
	8.72	38.34			
	4.55				

Bm			0.10	32.18	32.18
			1.10		
Bm			0.55	31.79	31.79
			0.71		

RETURN LEVELS

	0.58	38.37			
	0.68				
TP			8.75	29.62	
			4.51		
	4.76	34.36			
	2.50				
TP			4.65	29.73	
			2.01		
	4.82	34.55			
	2.44				

RETURN LEVELS CONT'D FB 88

COMMENTS

W. HUDSON  
of GRAYSON

WF 10 A.V. NOTCH CUT IN TOP OF A 2" PVC WELL IN  
A 8" PVC CASTING OF WELL # WF10

Bm WF7 A.V. NOTCH CUT IN NORTH TOP OF A 2" PVC  
WELL IN A 8" PVC CASTING OF WELL # WF7

306



Revised Levels FB 37

STA	+	HT	-	Level	Bm
		34.55			
TP			4.17		
			3.09	30.38	
	4.51	34.89			
	2.75				
TP			5.05		
			2.21	29.84	
	4.39	34.23			
	2.87				
TP			4.05		
			2.61	29.53	
	0.36	35.94			
	0.90				
Bm			4.13		
			8.13	31.81	31.81 ✓

old Revised Levels

Levels Cont'd FB 37

Comments

Bm LOTA FB 36 (Elev 0.00')

Bob



Levels To Dams DF9 & DF2

STA	+	HI	-	cul.	Bm
Bm	0.81 0.45	38.81			32.00 (205)
IP			5.94 1.32	32.87	32.87
IP			5.52 1.74	33.29	33.29
Bm			0.81 0.45	32.00	32.00

END LEVELS

Levels To Dams DF 5

	4.46 2.30	34.96			30.50
IP			4.81 2.45	30.15	
	5.07 2.19	35.22			
IP			4.75 2.32 51	30.47	
	5.00 2.20	35.53			
IP			4.96 2.30	30.57	
	5.55 1.71	30.12			

Levels CONTD Pg. 40

Comments

Bm LC10 Pg. 32

DF9, A 1" North cut in North Top of a 2" PVC Well in a 8" PVC casting of Well DF9

DF2, A 1" North cut in North Top of a 2" PVC Well in a 8" PVC casting of Well # DF2

Bm LC10 (Error 0.00')

Bm LC8 Pg. 27

*[Handwritten signature]*



LEVELS CONT'D LB 83

STA	+	HT	-	ELVD	B.M.
		36.12			
B.M.			4.40 2.80	31.72	31.715 (2005)
		<u>RETURN</u>	<u>LEVELS</u>		
	4.37 2.89	36.09			
TP			5.52 1.74	30.57	
	4.91 2.35	35.48			
TP			5.01 2.25	30.47	
	4.85 2.41	35.32			
TP			5.09 2.17	30.23	
	4.83 2.43	35.06			
B.M.			4.55 2.71	30.51	30.50

END RETURN LEVELS  
 ~ ~ ~

COMMENTS

DFS, A 1" NORTH CUT IN SOUT TOP OF A 2" PVC WELL  
 IN A 8" PVC CASING OF WELL # DFS

MT HURSON  
 of GRAHAM

B.M. LCB PG 87 (ERROR 0.01')

*[Red scribble]*



Levels for Wells DFI & DFB

STA

+

LC

—

~~LC~~

Bm

elev.

29.67

0.51  
0.75

30.18

FB

3.02  
4.24

33.16

FB

3.92  
3.34

32.20

Bm

0.51  
0.75

29.67

END SURVEY FROM WELLS

— — — —

Comments

Bm LCI Fe. 13

DFB, A 1" NORTH CUT IN NORTH TOP OF A 2" PVC WELL IN A 8" PVC CASTING. WELL # DFB

DFI, A 1" NORTH CUT IN NORTH TOP OF A 2" PVC WELL IN A 8" PVC CASTING. WELL # DFI

Bm ABOVE





# South Florida Water Management District Benchmark Database

Report run on: March 8, 2008 9:47 AM

Designation: LC1	Latitude: 263101.300	Scaled values only
County: LEE	Longitude: 813449.400	
USGS Quad: ALVA SE	Monument By: SFWMD	
Project: WF1 & WF08 WELL SITE	Year: 1998	
Sec: 35    Twp: 45    Rge: 27	Type: V	
Status:	Stamping: BM LC1 1998	
<b>NAD 1927 Coordinates:</b>	Party Chief: HUDSON	
N =	Field Book BCB 83	
E =	Page: 13	
Adjustment:	<b>NGVD 1929</b>	
<b>NAD 1983 Coordinates:</b>	Elevation: 29.670	
X =	Order: 3	
Y =	Class:	
Adjustment:	<b>NAVD 1988</b>	
Order:	Elevation:	
Class:	Order:	
	Class:	

Description:

FROM THE JUNCTION OF STATE ROAD 29 AND STATE ROAD 82, APPROXIMATELY 5.0 MILES NORTH OF IMMOCKALEE, GO WEST ON STATE ROAD 82 FOR 8.6 MILES TO THE ENTRANCE ROAD TO WILDCAT FARM ON THE LEFT. GO THROUGH GATE AND MAKE A SHARP LEFT TURN ON ROCK ROAD AND FOLLOW ROAD FOR 1.1 MILES TO STATION LOCATION ON THE RIGHT. MARK IS A SFWMD ALUMINUM DISC STAMPED BM LC1 1998, SET IN A 1 1/4" IRON PIPE WITH CONCRETE COLLAR RECESSED 0.3' BELOW GROUND, AT THE CENTERLINE OF THE LEVEE RAMP , AND IS N86^W, 21.1 FT FROM A METAL WITNESS POST , AND N22^W 22.65 FT TO WELL NO. WF 8.

WF08 WELL DATA FB BCB83 PAGE41 WF08 A "V" CUT IN THE NORTH TOP OF A 2-INCH PVC WELL IN AN 8-INCH PVC CASTING OF WELL WF08 EL. 33.16 NGVD 1929

WF01 WELL DATA FB BCB83 PAGE41 WF01 A "V" CUT IN THE NORTH TOP OF A 2-INCH PVC WELL IN AN 8-INCH PVC CASTING OF WELL WF01 EL. 32.26 NGVD 1929



## Survey Monument BenchMark Database Search

Designation	Lc2	Latitude	263032.7
County	Lee	Longitude	813624.3
Quad	Alva se	Monument	Sfwmd
Project	Lee county levels	Year Set	1998
S/T/R	4    46    27	Type	V
Status		Stamping	Bm lc2 1998
		Party Chief	Hudson
<b>NAD 1927</b>		FB	Bcb 83
N:	791030.84	Pg	18
E:	301505.53	<b>NGVD 1929</b>	
Adjustment		Elevation	30.06
<b>NAD 1983</b>		Order	3
N:		Class	
E:		<b>NAVD 1988</b>	
Adjustment		Elevation	
Order		Order	
Class		Class	

[Back](#)

FROM THE JUNCTION OF STATE ROAD 29 AND STATE ROAD 82, APPROXIMATELY 5.0 MILES NORTH OF IMMOCKALEE, GO WEST ON STATE ROAD 82 FOR 8.6 MILES TO THE ENTRANCE ROAD TO WILDCAT FARM ON THE LEFT. GO THROUGH GATE AND MAKE A SHARP LEFT TURN ON ROCK ROAD AND FOLLOW ROAD FOR 1.48 MILES TO STATION LOCATION ON THE RIGHT. MARK IS A SFWMD ALUMINUM DISC STAMPED BM LC2 1998, SET IN A 1 1/4" IRON PIPE WITH CONCRETE COLLAR RECESSED 0.3' BELOW GROUND. BM IS +/- 190FT SOUTH OF PC OF CURVE IN ROAD, 3 FT EAST OF METAL WITNESS POST, AND LOCATED ON WEST SIDE OF DIRT GRADE ON THE PROJECTION OF THE CENTERLINE OF A DRAINAGE DITCH ON THE EAST SIDE OF THE ROAD.





# South Florida Water Management District Benchmark Database

Report run on: March 7, 2008 3:51 PM

Designation: LC3  
 County: LEE  
 USGS Quad: ALVA SE  
 Project: LEE COUNTY LEVELS  
 Sec: 3      Twp: 46      Rge: 27

Latitude:  
 Longitude:  
 Monument By: SFWMD  
 Year: 1998  
 Type: V  
 Stamping: LC 3 1998  
 Party Chief: HUDSON  
 Field Book BCB 83  
 Page: 19

Scaled values only

Status:  
**NAD 1927 Coordinates:**  
 N = 787517.110  
 E = 299889.760

**NGVD 1929**  
 Elevation: 30.045  
 Order: 3  
 Class:

Adjustment:  
**NAD 1983 Coordinates:**  
 X =  
 Y =

**NAVD 1988**  
 Elevation:  
 Order:  
 Class:

Adjustment:  
 Order:  
 Class:

Description:

FROM THE JUNCTION OF STATE ROAD 29 AND STATE ROAD 82, APPROXIMATELY 5.0 MILES NORTH OF IMMOCKALEE, GO WEST ON STATE ROAD 82 FOR 8.6 MILES TO THE ENTRANCE ROAD TO WILDCAT FARM ON THE LEFT. GO THROUGH GATE AND MAKE A SHARP LEFT TURN ON ROCK ROAD AND FOLLOW ROAD FOR 2.25 MILES TO MAIN OFFICE AND STATION LOCATION. MARK IS A SFWMD ALUMINUM DISC STAMPED BM LC 3 1998, SET IN A 1 1/4" IRON PIPE WITH CONCRETE COLLAR RECESSED 0.4' BELOW GROUND. BM IS 2 FT NE OF WOOD POST WITH OFFICE SIGN AND WITNESS SIGN, 53 FT S70^W OF EAVE OF OFFICE BUILDING, 54 FT N61^W OF EAVE OF OFFICE BUILDING.





# South Florida Water Management District Benchmark Database

Report run on: December 18, 2002 11:57 AM

Designation: LC4	Latitude:	Scaled values only
County: LEE	Longitude:	
USGS Quad: CORKSCREW	Monument By: SFWMD	
Project: BCB	Year: 1998	
Sec: 9      Twp: 46      Rge: 27	Type: V	
Status:	Stamping: BM LC 4	
<b>NAD 1927 Coordinates:</b>	Party Chief: HUDSON	
N = 785246.290	Field Book BCB #83	
E = 299280.770	Page: 22	
Adjustment:	<b>NGVD 1929</b>	
<b>NAD 1983 Coordinates:</b>	Elevation: 32.930	
X =	Order: 3	
Y =	Class:	
Adjustment:	<b>NAVD 1988</b>	
Order:	Elevation:	
Class:	Order:	
	Class:	

Description:

FROM THE JUNCTION OF STATE ROAD 29 AND STATE ROAD 82, APPROXIMATELY 5.0 MILES NORTH OF IMMOCKALEE, GO WEST ON STATE ROAD 82 FOR 8.6 MILES TO THE ENTRANCE ROAD TO WILDCAT FARM ON THE LEFT. GO THROUGH GATE AND MAKE A SHARP LEFT TURN ON ROCK ROAD AND FOLLOW ROAD FOR 2.25 MILES TO THE OFFICE. CONTINUE SOUTH 0.1 MILE TO INTERSECTION OF MAIN ROAD AND LEVEE ROAD, TURN RIGHT ON LEVEE ROAD AND GO 0.15 MILE TO STATION LOCATION ON THE RIGHT . MARK IS A SFWMD ALUMINUM DISC STAMPED BM LC4 1998, SET IN A 1 1/4" IRON PIPE WITH CONCRETE COLLAR ON NORTH SHOULDER OF ROAD, RECESSED 0.3' BELOW GROUND. BM IS S36°E APPROXIMATELY 230 FT TO WELL WF 3, S18°E 19 FT TO METAL WITNESS POST.



## Survey Monument BenchMark Database Search

Designation	Lc5	Latitude	262903.6
County	Lee	Longitude	813656.7
Quad	Corkscrew	Monument	Sfwmd
Project	Lee county levels	Year Set	1998
S/T/R	15    46    27	Type	V
Status		Stamping	Bm lc 5 1998
		Party Chief	Hudson
<b>NAD 1927</b>		FB	Bcb 83
N:	782053.89	Pg	23
E:	298522.56	<b>NGVD 1929</b>	
Adjustment		Elevation	33.46
<b>NAD 1983</b>		Order	3
N:		Class	
E:		<b>NAVD 1988</b>	
Adjustment		Elevation	
Order		Order	
Class		Class	

[Back](#)

FROM THE JUNCTION OF STATE ROAD 29 AND STATE ROAD 82, APPROXIMATELY 5.0 MILES NORTH OF IMMOCKALEE, GO WEST ON STATE ROAD 82 FOR 8.6 MILES TO THE ENTRANCE ROAD TO WILDCAT FARM ON THE LEFT. GO THROUGH GATE AND MAKE A SHARP LEFT TURN ON ROCK ROAD AND FOLLOW ROAD FOR 2.25 MILES TO MAIN OFFICE, CONTINUE PAST OFFICE FOR APPROXIMATELY 800 FT, TURN RIGHT, TAKE LEVEE ROAD AND GO 1.0 MILE TO 90° BEND AND STATION LOCATION. MARK IS A SFWMD ALUMINUM DISC STAMPED BM LC5 1998, SET IN A 1 1/4" IRON PIPE WITH CONCRETE COLLAR RECESSED 0.3' BELOW GROUND. BM IS LOCATED 11.7 FT SW OF THE CENTERLINE OF THE LEVEE ROAD, N52°E 6.8 FT FROM A METAL WITNESS POST, S26°W 95.1 FT TO A WOOD CORNER POST OF A BARBED WIRE FENCE.





# South Florida Water Management District Benchmark Database

Report run on: December 18, 2002 12:03 PM

Designation: LC6	Latitude:	Scaled values only
County: LEE	Longitude:	
USGS Quad: CORKSCREW	Monument By: SFWMD	
Project: WF4 WELL SITE	Year: 1998	
Sec: 15    Twp: 46    Rge: 27	Type: V	
Status:	Stamping: BM LC 6 1998	
<b>NAD 1927 Coordinates:</b>	Party Chief: HUDSON	
N = 779583.450	Field Book BCB #83	
E = 299780.010	Page: 24	
Adjustment:	<b>NGVD 1929</b>	
<b>NAD 1983 Coordinates:</b>	Elevation: 33.220	
X =	Order: 3	
Y =	Class:	
Adjustment:	<b>NAVD 1988</b>	
Order:	Elevation:	
Class:	Order:	
	Class:	

Description:

FROM THE JUNCTION OF STATE ROAD 29 AND STATE ROAD 82, APPROXIMATELY 5.0 MILES NORTH OF IMMOCKALEE, GO WEST ON STATE ROAD 82 FOR 8.6 MILES TO THE ENTRANCE ROAD TO WILDCAT FARM ON THE LEFT. GO THROUGH GATE AND MAKE A SHARP LEFT TURN ON ROCK ROAD AND FOLLOW ROAD FOR 2.25 MILES TO MAIN OFFICE, CONTINUE PAST OFFICE FOR APPROXIMATELY 800 FT, TURN RIGHT, TAKE LEVEE ROAD AND GO SOUTHERLY 2.31 MILES TO CURVE IN LEVEE AND STATION LOCATION ON LEFT APPROXIMATELY CENTER OF CURVE. MARK IS A SFWMD ALUMINUM DISC STAMPED BM LC 6 1998, SET IN A 1 1/4" IRON PIPE WITH CONCRETE COLLAR RECESSED 0.3' BELOW GROUND. BM IS LOCATED 11.7 FT EAST OF THE CENTERLINE OF THE LEVEE ROAD, 3.9 FT WEST OF A METAL WITNESS POST, N67^E 98.4 FT TO WELL # WF4.





# South Florida Water Management District Benchmark Database

Report run on: December 18, 2002 12:06 PM

Designation: LC7	Latitude:	Scaled values only
County: LEE	Longitude:	
USGS Quad: CORKSCREW	Monument By: SFWMD	
Project: WF6 WELL SITE	Year: 1998	
Sec: 15    Twp: 46    Rge: 27	Type: V	
Status:	Stamping: BM LC 7 1998	
<b>NAD 1927 Coordinates:</b>	Party Chief: HUDSON	
N = 779765.530	Field Book BCB #83	
E = 302066.660	Page: 36	
Adjustment:	<b>NGVD 1929</b>	
<b>NAD 1983 Coordinates:</b>	Elevation: 30.040	
X =	Order: 3	
Y =	Class:	
Adjustment:	<b>NAVD 1988</b>	
Order:	Elevation:	
Class:	Order:	
	Class:	

Description:

FROM THE JUNCTION OF STATE ROAD 29 AND STATE ROAD 82, APPROXIMATELY 5.0 MILES NORTH OF IMMOCKALEE, GO WEST ON STATE ROAD 82 FOR 8.6 MILES TO THE ENTRANCE ROAD TO WILDCAT FARM ON THE LEFT. GO THROUGH GATE AND MAKE A SHARP LEFT TURN ON ROCK ROAD AND FOLLOW ROAD FOR 2.25 MILES TO MAIN OFFICE, CONTINUE PAST OFFICE FOR APPROXIMATELY 800 FT, TURN LEFT, GO EAST FOR 0.83 MILE TO JUNCTION OF ROADS, GO SOUTHERLY ON ROCK ROAD FOR 0.68 MILE TO DOUBLE DITCH, CROSS DOUBLE DITCH AND TURN RIGHT AND GO APPROXIMATELY 800 FT TO STATION LOCATION ON RIGHT. MARK IS A SFWMD ALUMINUM DISC STAMPED BM LC7 1998, SET IN A 1 1/4" IRON PIPE WITH CONCRETE COLLAR. BM IS LOCATED 35 FT WEST OF A METAL CULVERT, 8.35 FT SOUTH OF A METAL WITNESS POST, AND 40 FT EAST OF A DIRT RAMP OVER A DITCH.





# South Florida Water Management District Benchmark Database

Report run on: March 8, 2008 10:11 AM

Designation: LC8	Latitude: 262908.400	Scaled values only
County: LEE	Longitude: 813552.100	
USGS Quad: ALVA SE	Monument By: SFWMD	
Project: WF05 WELL SITE	Year: 1998	
Sec: 10    Twp: 46    Rge: 27	Type: V	
Status:	Stamping: BM LC8 1998	
<b>NAD 1927 Coordinates:</b>	Party Chief: HUDSON	
N =	Field Book BCB 83	
E =	Page: 27	
Adjustment:	<b>NGVD 1929</b>	
<b>NAD 1983 Coordinates:</b>	Elevation: 30.500	
X = 787723.000	Order: 3	
Y = 782416.000	Class:	
Adjustment:	<b>NAVD 1988</b>	
Order:	Elevation:	
Class:	Order:	
	Class:	

Description:

TO REACH: FROM THE JUNCTION OF STATE ROAD 29 AND STATE ROAD 82, APPROXIMATELY 5.0 MILES NORTH OF IMMOCKALEE, GO WEST ON STATE ROAD 82 FOR 8.6 MILES TO THE ENTRANCE ROAD TO WILDCAT FARM ON THE LEFT. GO THROUGH GATE AND MAKE A SHARP LEFT TURN ON ROCK ROAD AND FOLLOW ROAD FOR 2.25 MILES TO MAIN OFFICE, CONTINUE PAST OFFICE FOR APPROXIMATELY 800 FEET, TURN LEFT, GO EAST FOR 0.83 OF A MILE TO THE JUNCTION OF ROADS, GO SOUTHERLY ON ROCK ROAD FOR 0.91 OF A MILE TO STATION LOCATION ON LEFT.  
 MARK IS A SFWMD ALUMINUM DISC STAMPED BM LC8 1998, SET IN A 1 1/4" IRON PIPE WITH CONCRETE COLLAR RECESSED 0.3 FT BELOW GROUND . BM IS LOCATED 11 FT EAST OF THE CENTERLINE OF ROCK ROAD AND 4.6 FT FROM A METAL WITNESS POST.

WF05 WELL DATA FB BCB83 PAGE40 WF05 A "V" CUT IN THE SOUTHERLY TOP OF A 2-INCH PVC WELL IN AN 8-INCH PVC CASTING OF WELLWF05 EL. 31.715 NGVD 1929





# South Florida Water Management District Benchmark Database

Report run on: March 7, 2008 8:44 AM

Designation: LC9	Latitude:	Scaled values only
County: LEE	Longitude:	
USGS Quad: ALVA SE	Monument By: SFWMD	
Project: LEE COUNTY LEVELS	Year: 1998	
Sec: 3      Twp: 46      Rge: 27	Type: V	
Status:	Stamping: BM LC9 1998	
<b>NAD 1927 Coordinates:</b>	Party Chief: HUDSON	
N = 786818.640	Field Book BCB 83	
E = 303998.620	Page: 29	
Adjustment:	<b>NGVD 1929</b>	
<b>NAD 1983 Coordinates:</b>	Elevation: 29.965	
X =	Order: 3	
Y =	Class:	
Adjustment:	<b>NAVD 1988</b>	
Order:	Elevation:	
Class:	Order:	
	Class:	

Description:

FROM THE JUNCTION OF STATE ROAD 29 AND STATE ROAD 82, APPROXIMATELY 5.0 MILES NORTH OF IMMOCKALEE, GO WEST ON STATE ROAD 82 FOR 8.6 MILES TO THE ENTRANCE ROAD TO WILDCAT FARM ON THE LEFT. GO THROUGH GATE AND MAKE A SHARP LEFT TURN ON ROCK ROAD AND FOLLOW ROAD FOR 2.25 MILES TO MAIN OFFICE, CONTINUE PAST OFFICE FOR APPROXIMATELY 800 FT, TURN LEFT, GO EAST FOR 0.83 MILE TO STATION LOCATION ON LEFT. MARK IS A SFWMD ALUMINUM DISC STAMPED BM LC9 1998, SET IN A 1 1/4" IRON PIPE WITH CONCRETE COLLAR RECESSED 0.4 FT BELOW GROUND . BM IS LOCATED ON THE NORTH EDGE OF ROCK ROAD, ON THE PROJECTION OF THE CENTERLINE OF THE ROCK ROAD ON THE RIGHT, AND IS N83°W 89 FT TO POWERPOLE.





# South Florida Water Management District Benchmark Database

Report run on: March 7, 2008 8:35 AM

Designation: LC10	Latitude: 263006.800	Scaled values only
County: LEE	Longitude: 813524.200	
USGS Quad: CORKSCREW	Monument By: SFWMD	
Project: WF2 WELL SITE	Year: 1998	
Sec: 2      Twp: 46      Rge: 27	Type: V	
Status: GOOD	Stamping: BM LC 10 1998	
<b>NAD 1927 Coordinates:</b>	Party Chief: HUDSON	
N =	Field Book BCB 83	
E =	Page: 32	
Adjustment:	<b>NGVD 1929</b>	
<b>NAD 1983 Coordinates:</b>	Elevation: 31.899	
X = 793285.000	Order: 3	
Y = 794344.000	Class:	
Adjustment:	<b>NAVD 1988</b>	
Order:	Elevation: 30.686	
Class:	Order: 3	
	Class:	

Description:

OLD DISTRICT EL. 32.00 NGVD 29

\*\*\*\*\* RECOVERY NOTE \*\*\*\*\*

3/21/2003 CONSUL-TECH FIELD BOOK 516-6, PAGE 6 TO REACH: FROM THE INTERSECTION OF SR-29 AND SR-82 (SOUTH OF LABELLE, FLORIDA); GO WEST ALONG SR-82, 8.6 MILES, TO THE FARM ENTRANCE (CITRUS CO'OP) ON THE SOUTH SIDE OF THE ROAD; GO SOUTH THROUGH THE GATE AND EAST ALONG A DIRT ROAD 0.9 MILE, TO A 90 DEGREE BEND TO THE SOUTH; GO SOUTH 1.5 MILES, TO A 90 DEGREE BEND TO THE WEST; GO WEST 0.5 MILE, TO A 90 DEGREE BEND TO THE SOUTH; GO WEST NORTHWEST ALONG A DIRT TRAIL WITH A DITCH ON THE WEST SIDE, 550 FEET, TO A PUMP ON A CONCRETE PAD AND THE MARK.

"LC-10" IS A 2" ALUMINUM DISC, BEARING SO. FLA WATER MANAGEMENT DIST., LC-10, 1998, FOUND IN THE NORTHEAST CORNER OF FUEL TANK RETENTION STRUCTURE.

\*\*\*\*\*

FROM THE JUNCTION OF STATE ROAD 29 AND STATE ROAD 82, APPROXIMATELY 5.0 MILES NORTH OF IMMOCKALEE, GO WEST ON STATE ROAD 82 FOR 8.6 MILES TO THE ENTRANCE ROAD TO WILDCAT FARM ON THE LEFT. GO THROUGH GATE AND MAKE A SHARP LEFT TURN ON ROCK ROAD AND FOLLOW ROAD FOR 2.25 MILES TO MAIN OFFICE, CONTINUE PAST OFFICE FOR APPROXIMATELY 800 FT, TURN LEFT, GO EAST FOR 1.2 MILES TO 90° TURN TO THE NORTH, CONTINUE NORTH ON ROCK ROAD +/- 900 FT TO 90° TURN TO THE EAST, TURN LEFT AND FOLLOW GROVE ROAD APPROXIMATELY 400 FT TO GROVE PUMP, AND STATION LOCATION ON LEFT. MARK IS A SFWMD ALUMINUM DISC STAMPED BM LC10 1998, SET IN THE TOP OF THE NORTHEAST CORNER OF A CONCRETE FUEL TANK CATCH BASIN.



