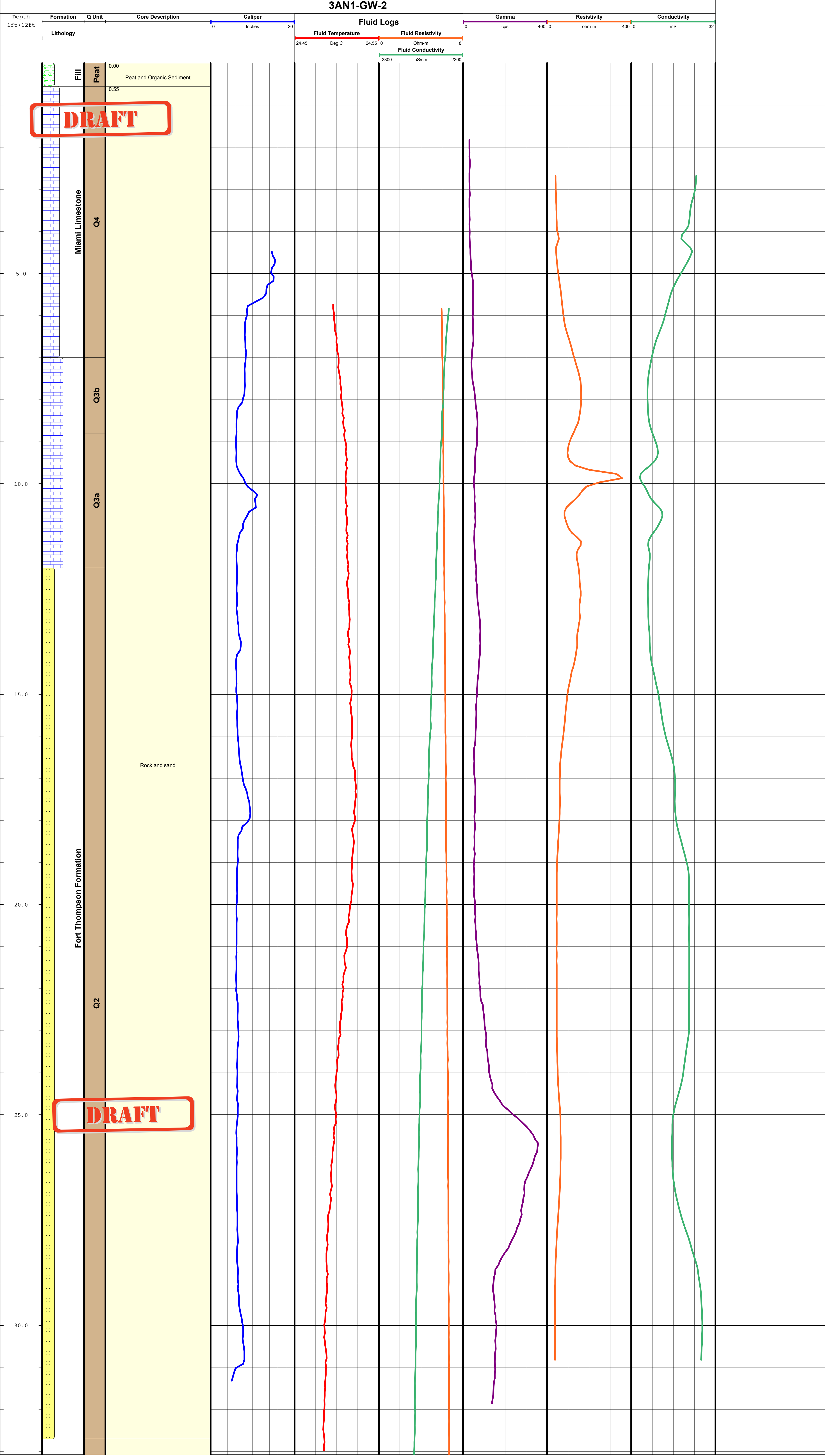


DRAFT



U. S. Geological Survey, Center for Water and Restoration Studies, Miami, Florida

WELL	3AN1-GW-2	PROJECT	Tree Island Hydrostratigraphy	DATE OF COMPLETION	15 February 2002
LOCATION	26-11-15.4 N 080-44-15.9 W	ELEVATION	10.049 Feet (NGVD29) Top of Peat	WELL DEPTH	33 Feet



DRAFT

DRAFT