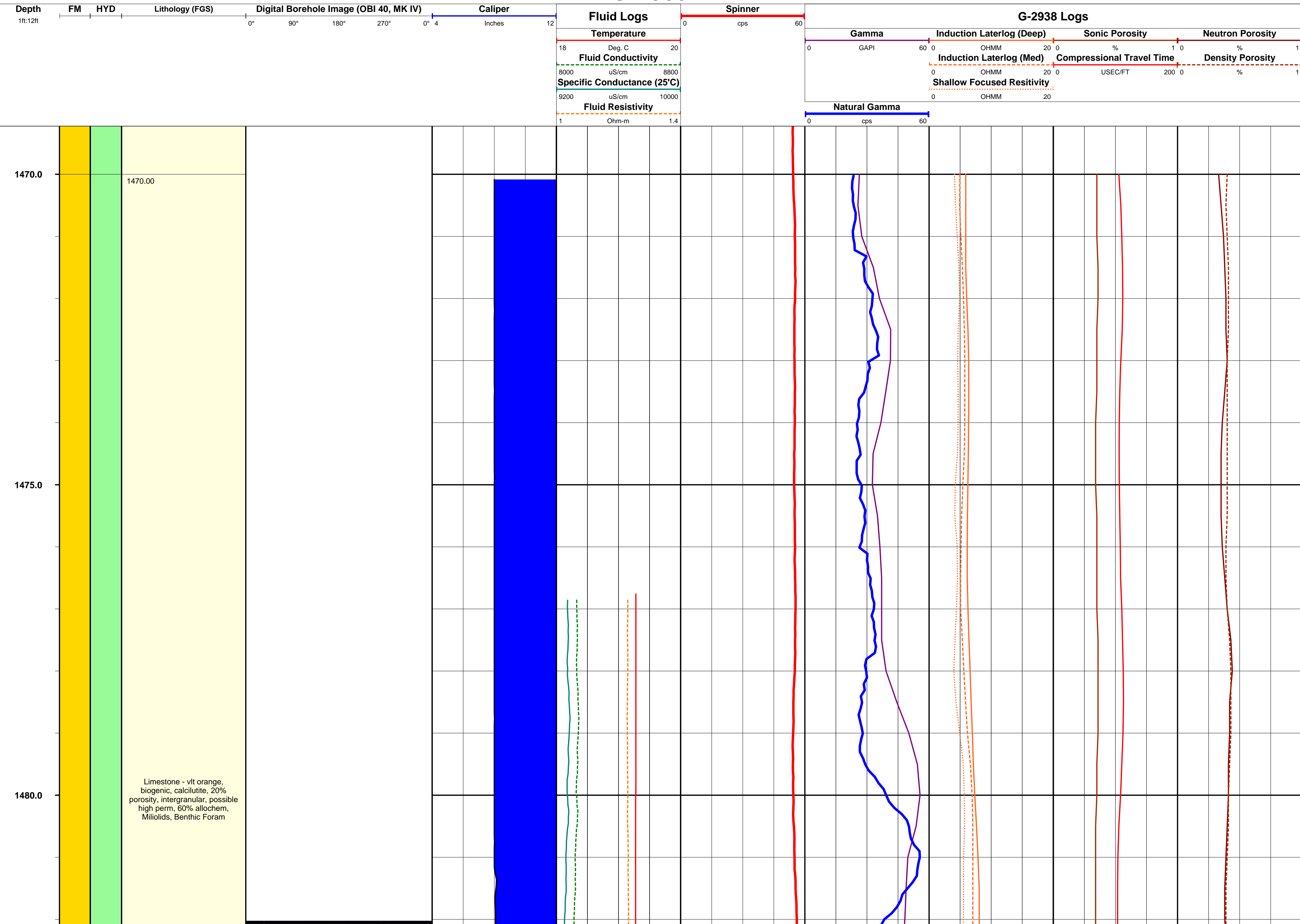
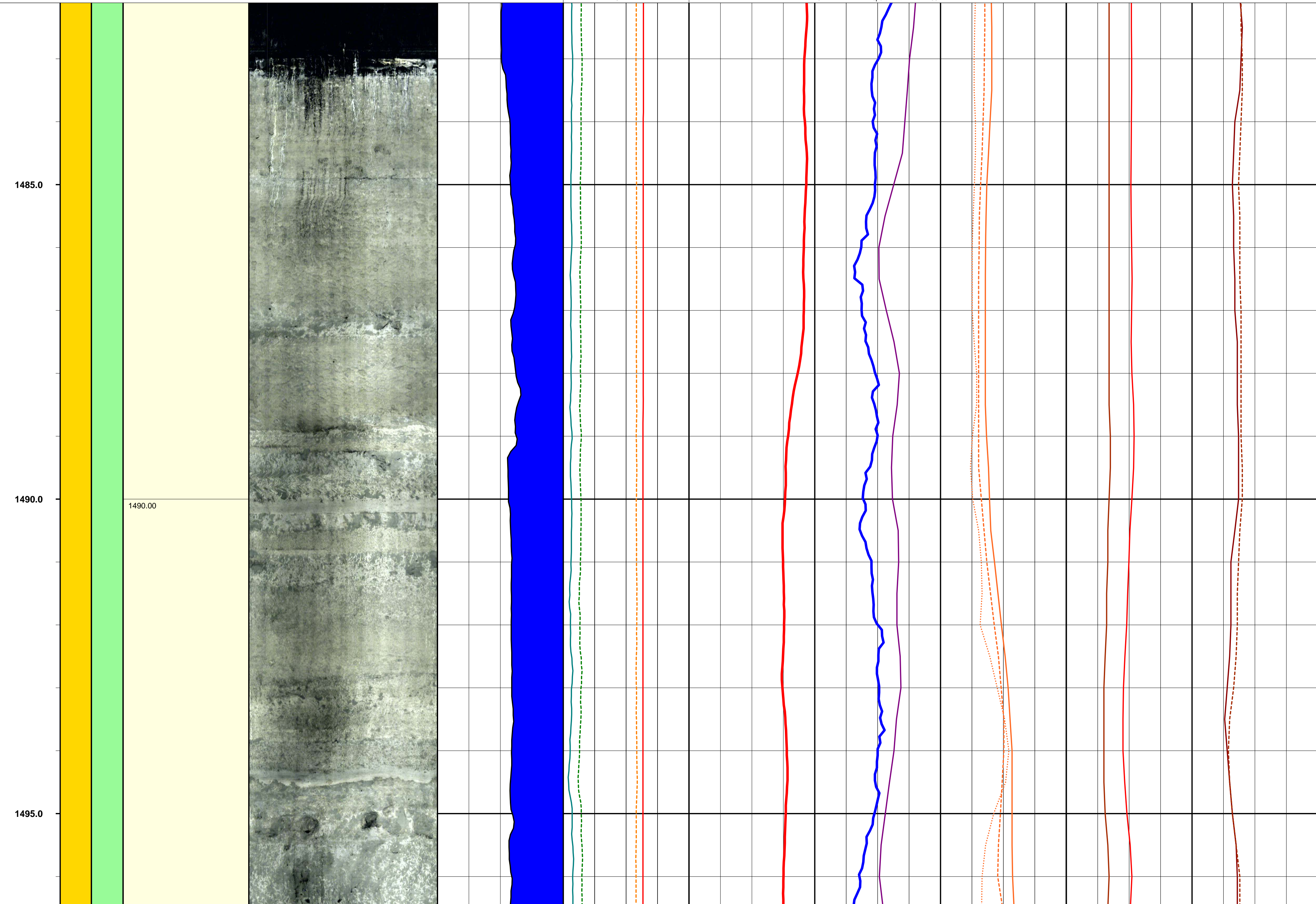
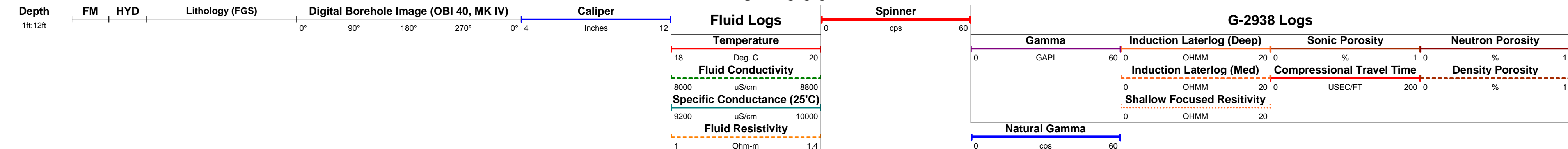


WELL	G-2939 (BF-2)	PROJECT	Broward Floridan Study	DATE OF COMPLETION	1993
LOCATION	26-10-24 N (GPS, NAD 83)	ELEVATION	9.38 Feet (Land surface, NGVD 29)	WELL DEPTH	1600 Feet TD
	080-10-42 W	DATE OF INITIAL LOGGING	11 February 1993		

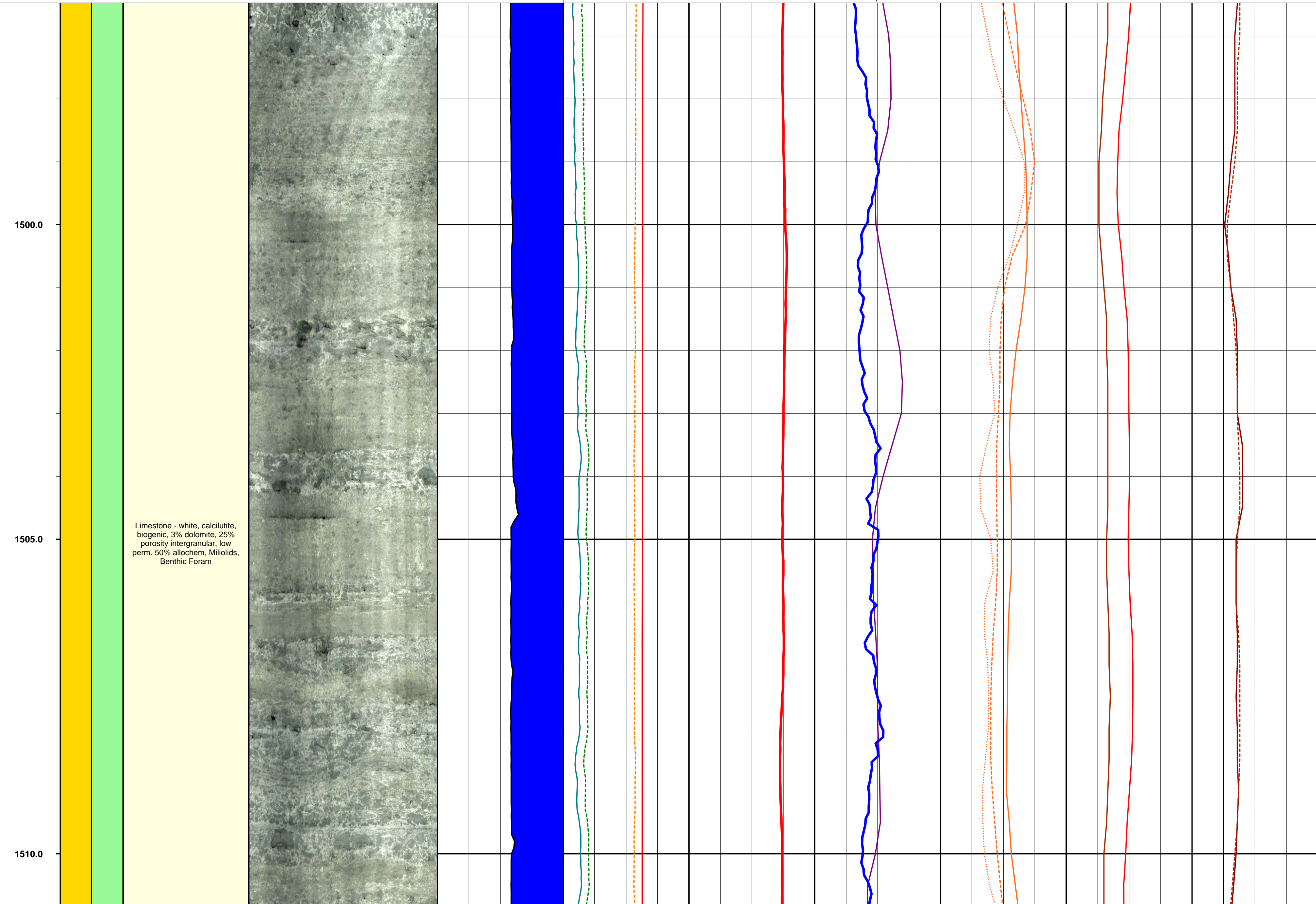
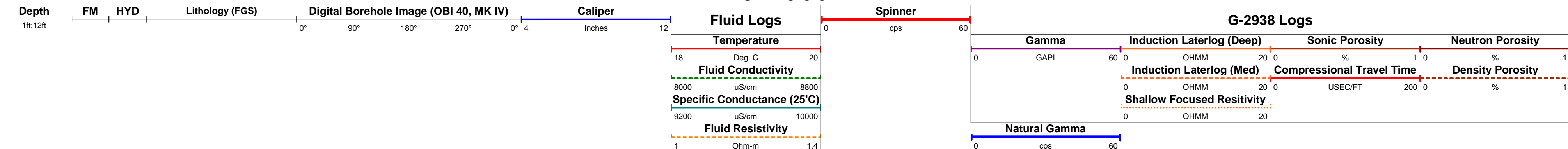
G-2939



G-2939

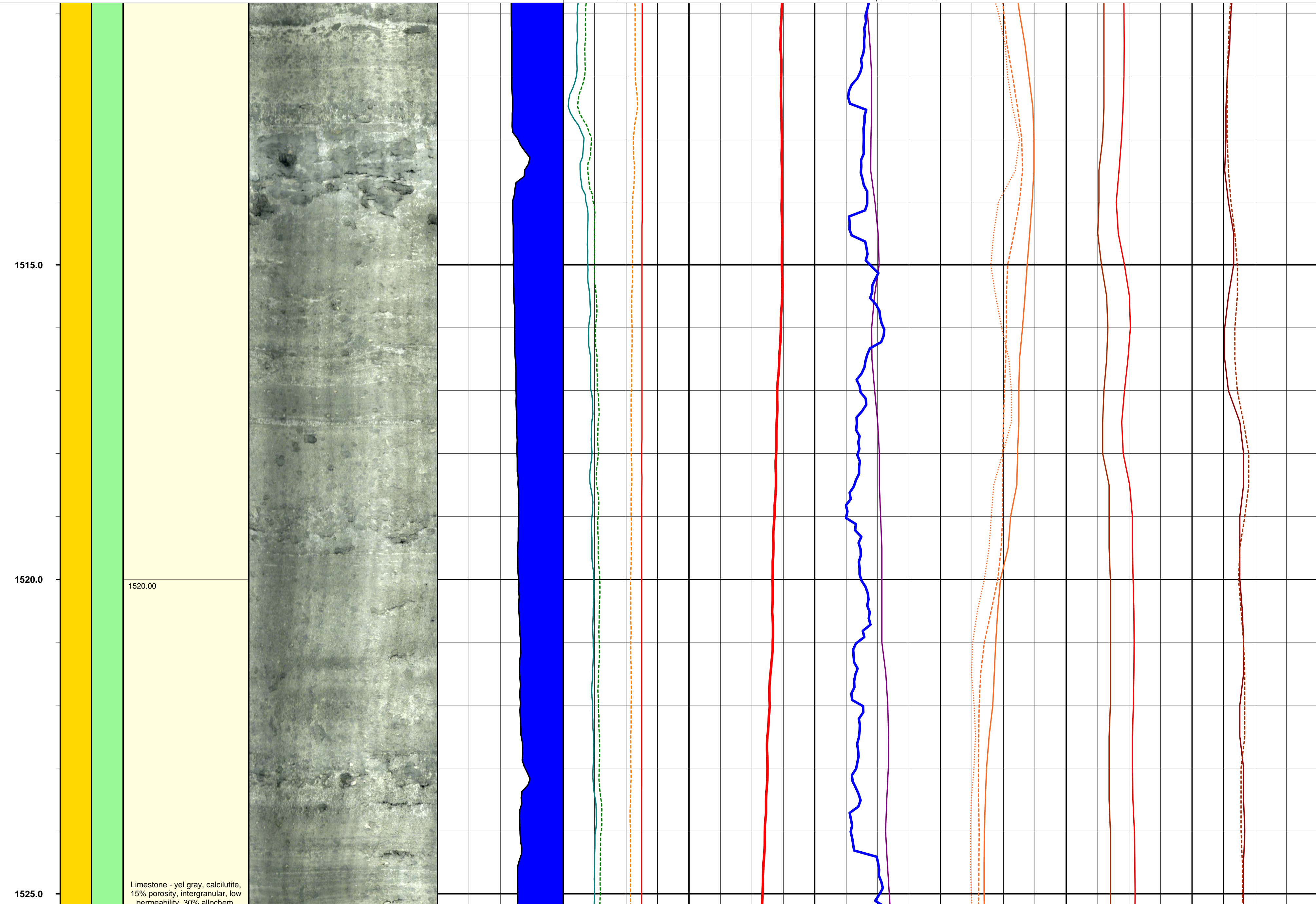
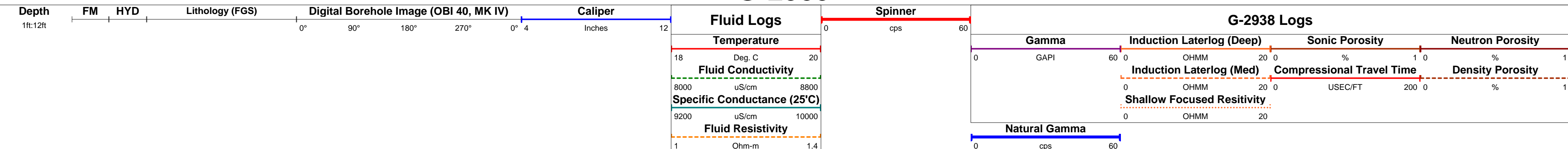


G-2939



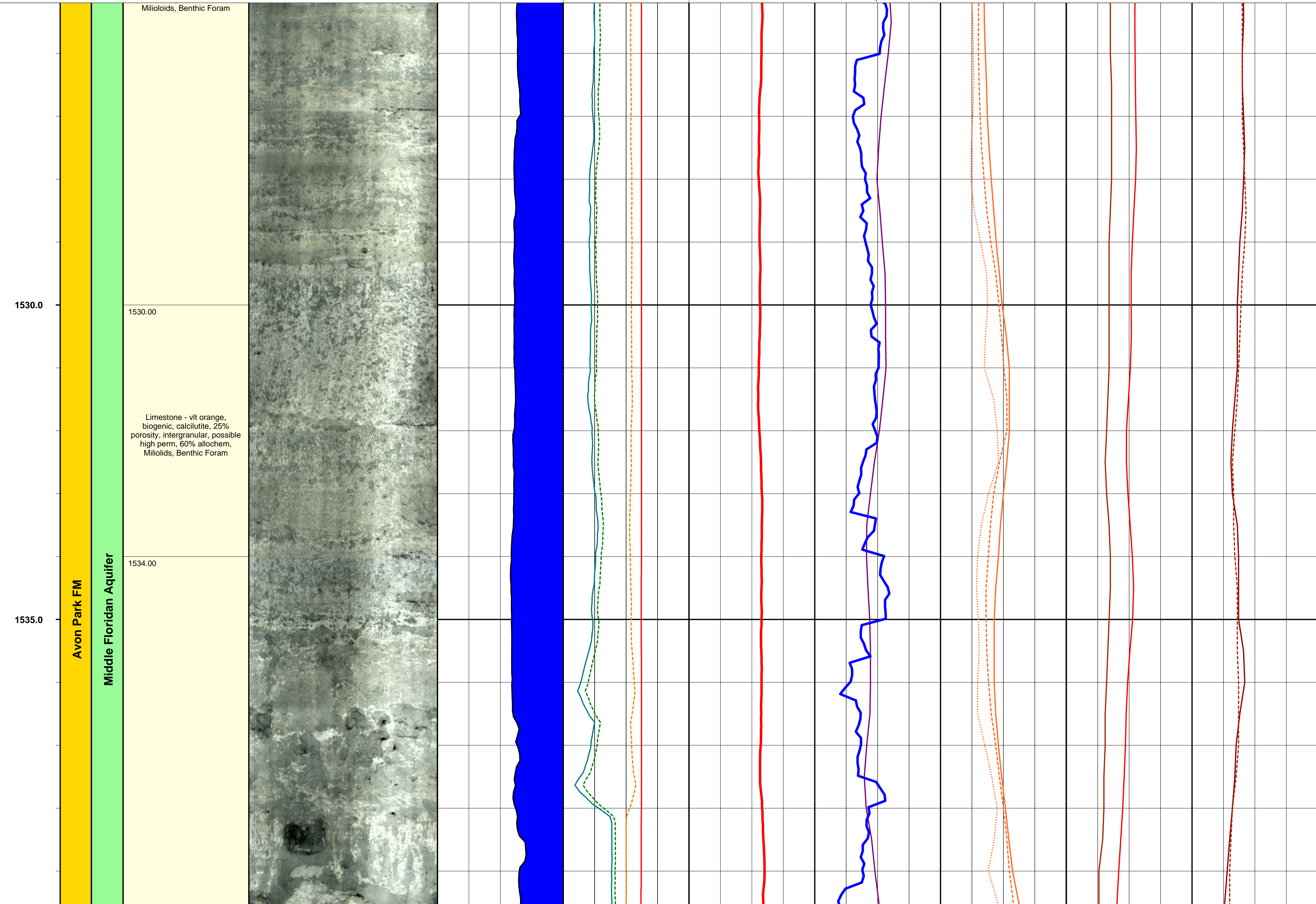
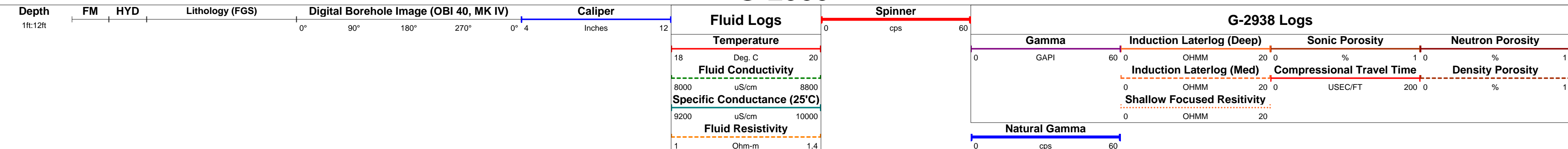
Limestone - white, calcilitite, biogenic, 3% dolomite, 25% porosity intergranular, low perm. 50% allochem, Milioids, Benthic Foram

G-2939

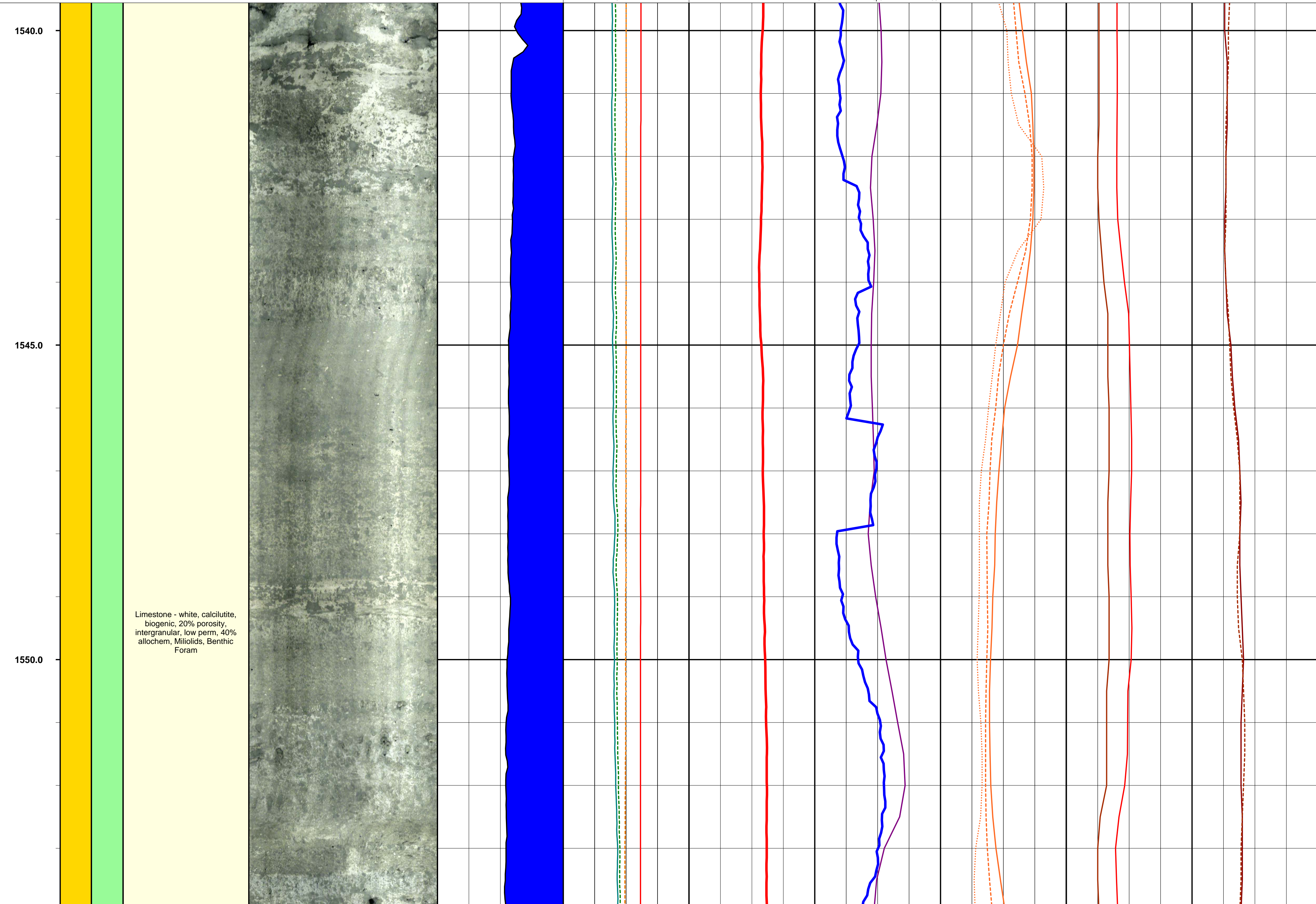
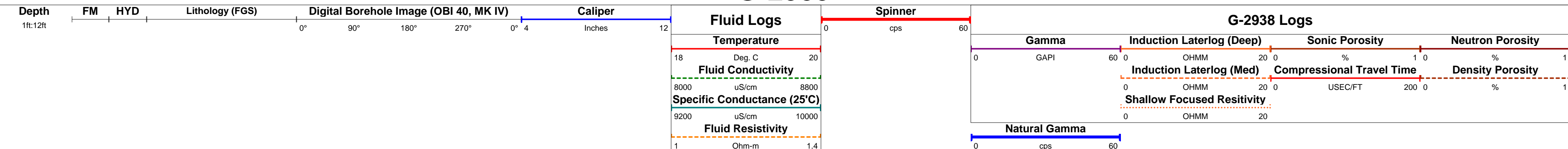


1525.0 Limestone - yel gray, calcilutite, 15% porosity, intergranular, low permeability, 30% allochem.

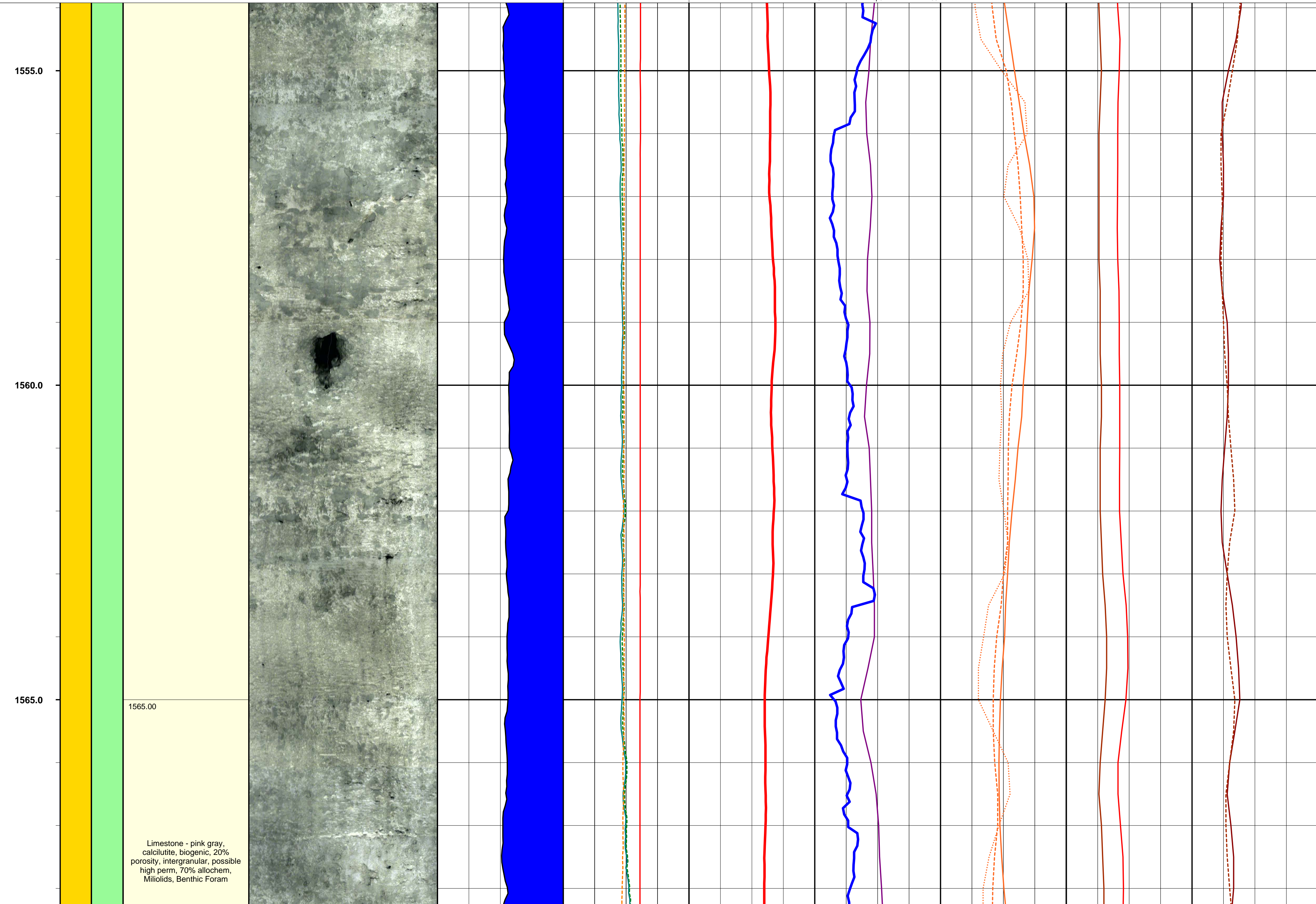
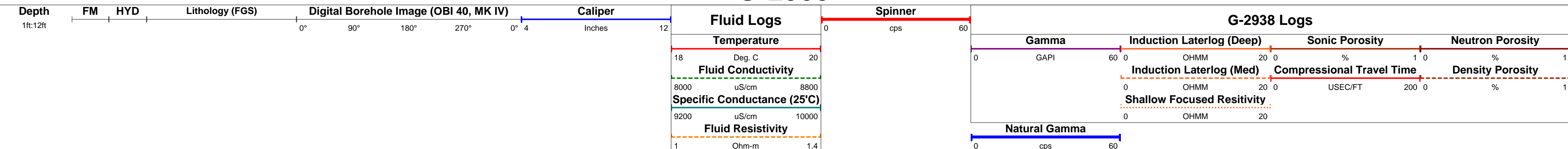
G-2939



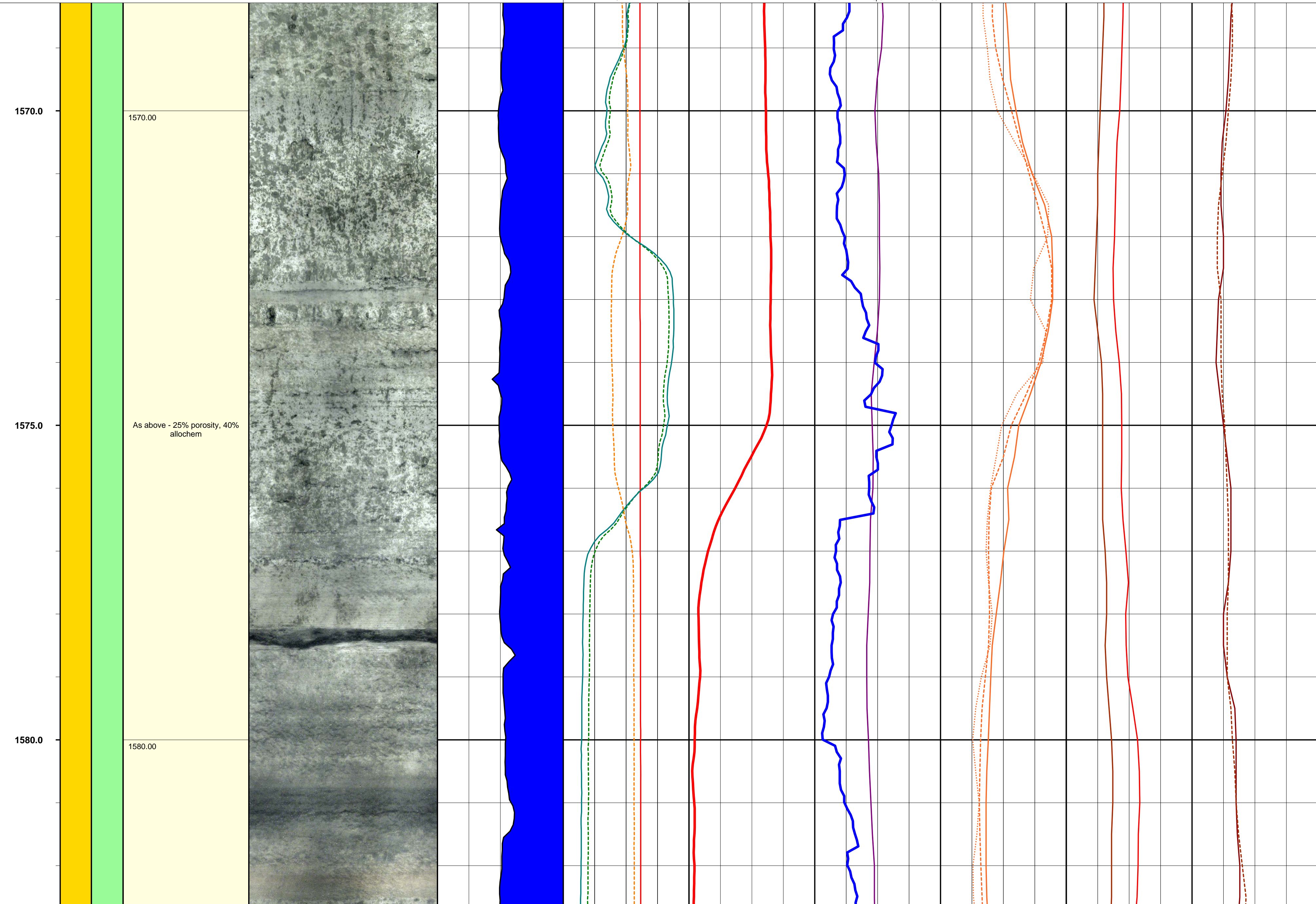
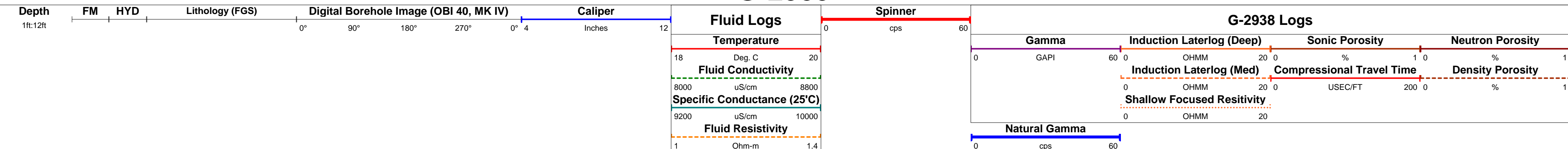
G-2939



G-2939



G-2939

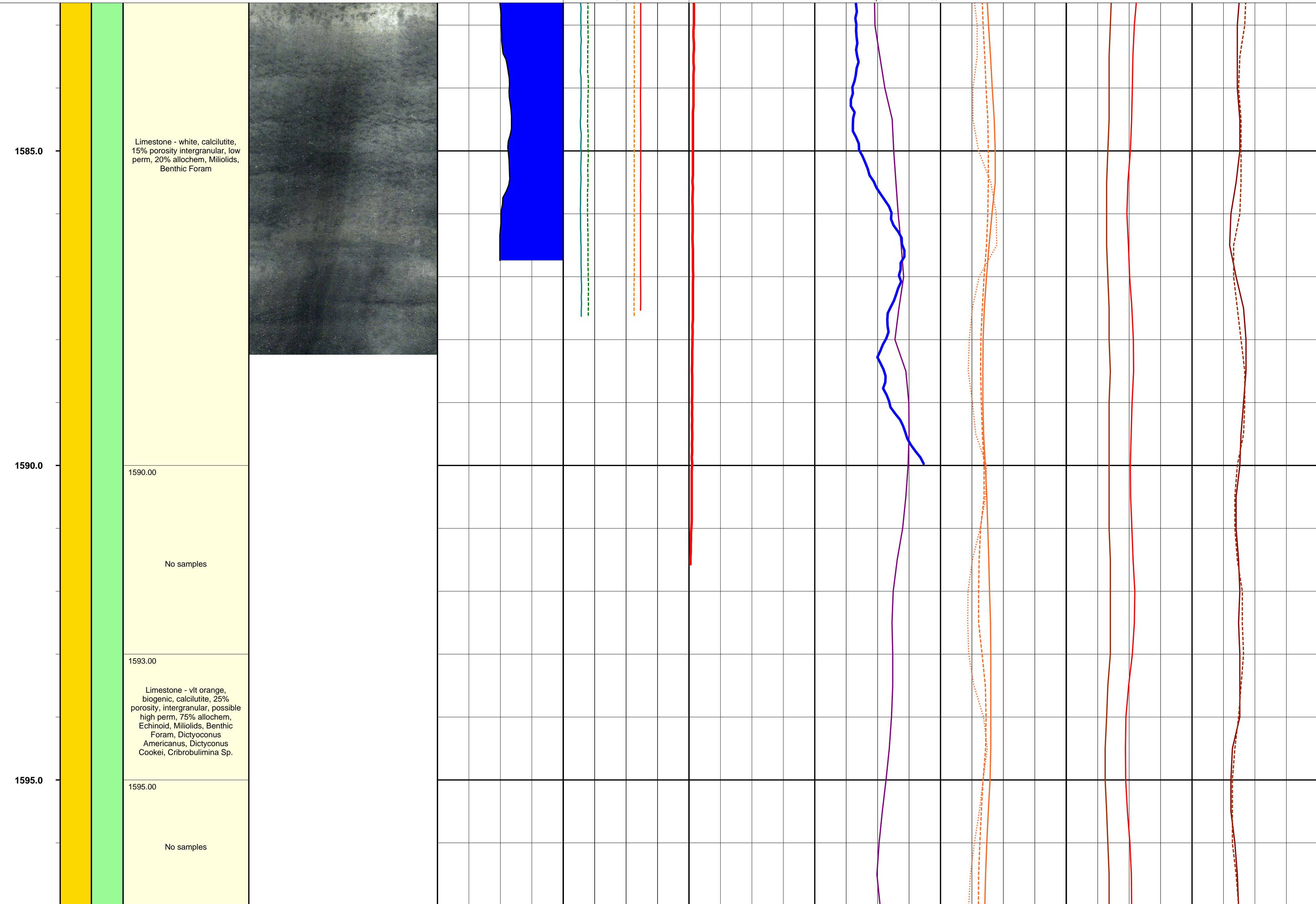
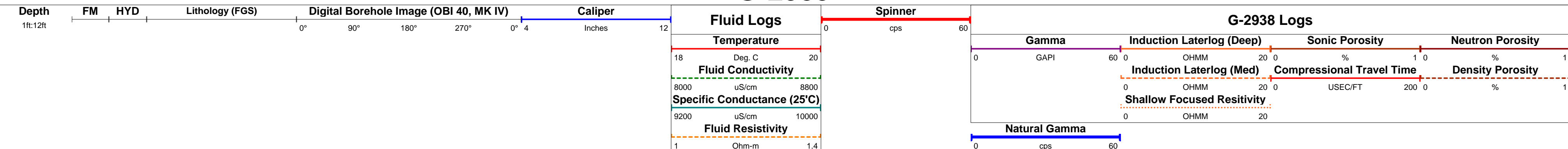


1570.00

As above - 25% porosity, 40% allochem

1580.00

G-2939



G-2939

