







FLORIDA  
GEOPHYSICAL LOGGING, INC.

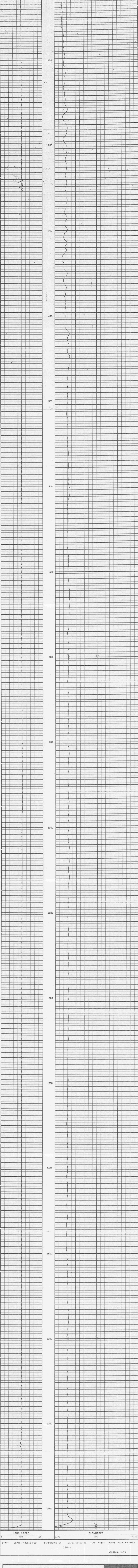
COMPANY: YOUNGQUIST BROTHERS DRILLING CO. INC.  
 WELL: TEST/INJECTION WELL  
 FIELD: ZEMEL ROAD LANDFILL  
 COUNTY: CHARLOTTE  
 STATE: FLORIDA  
 LOCATION: 2606047 29° N 8105557° W  
 OTHER SERVICES:  
 SEC. 25 TWP. 42S R10E 23E  
 PERMANENT DATUM: EL. 11.0  
 FOR MEASURED FROM: EL. 11.0  
 DATE: 02/27/92  
 TIME: 05:21  
 FLOWMETER: 1  
 TYPE: 100  
 LOGGED INTERVAL: 1822 TO 0  
 OPERATING RIG TIME: MUD  
 TYPE FLUID IN HOLE: MUD  
 ELEV.: K. B. 11.0  
 G. I. 11.0

PERMANENT DATUM: EL. 11.0  
 FOR MEASURED FROM: EL. 11.0  
 DATE: 02/27/92  
 TIME: 05:21  
 FLOWMETER: 1  
 TYPE: 100  
 LOGGED INTERVAL: 1822 TO 0  
 OPERATING RIG TIME: MUD  
 TYPE FLUID IN HOLE: MUD

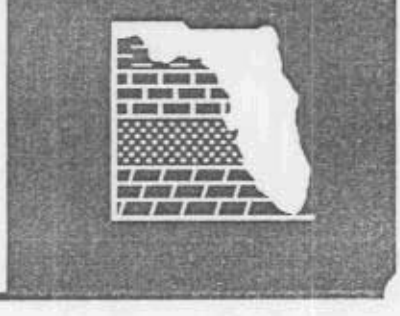
LEVEL: FULL  
 EQUIPMENT: POISSON BEACH  
 SAUND  
 ATTENDED BY: A. FRATARANGELI  
 BOREHOLE RECORD: Casing Record

RUN NO. BIT FROM TO SIZE HGT. FROM TO

ALL INTERPRETATIONS ARE OPINIONS BASED ON INFERENCES FROM ELECTRICAL OR OTHER MEASUREMENTS AND WE CANNOT AND DO NOT GUARANTEE THE ACCURACY OR CORRECTNESS OF ANY INTERPRETATION, AND WE SHALL NOT, EXCEPT IN THE CASE OF GROSS OR WILLFUL NEGLIGENCE ON OUR PART, BE LIABLE OR RESPONSIBLE FOR ANY LOSS, COSTS, DAMAGES, OR EXPENSES INCURRED OR SUSTAINED BY ANYONE RESULTING FROM ANY INTERPRETATION MADE BY ANY OF OUR OFFICERS, AGENTS, OR EMPLOYEES. THESE INTERPRETATIONS ARE ALSO SUBJECT TO OUR GENERAL TERMS AND CONDITIONS SET OUT IN OUR CURRENT PRICE SCHEDULE.



COMPANY: YOUNGQUIST BROTHERS DRILLING CO. INC.  
 WELL: TEST/INJECTION WELL  
 FIELD: ZEMEL ROAD LANDFILL STATE: FLORIDA

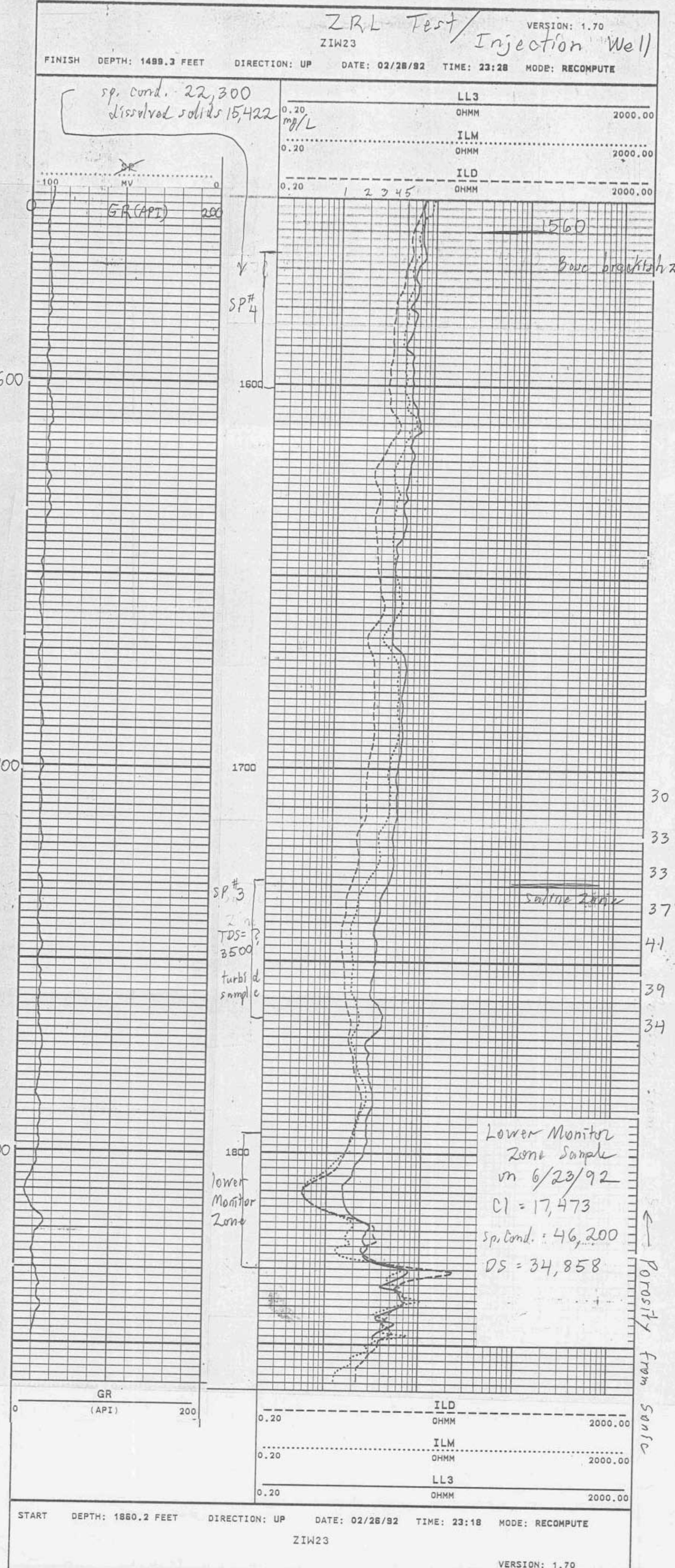






COMPANY YOUNGQUIST BROTHERS DRILLING CO. INC.  
 WELL TEST/INJECTION WELL  
 FIELD ZEMEL ROAD LANDFILL  
 COUNTY CHARLOTTE STATE FLORIDA  
 LOCATION 26DEG47'29"N 81DEG57'53"W  
 OTHER SERVICES:  
 FILE NO. \_\_\_\_\_  
 SEC. 25 TWP. 42S RGE. 23E  
 PERMANENT DATUM GL ELEV. \_\_\_\_\_ FT. ABOVE PERMANENT DATUM  
 LOG MEASURED FROM GL ELEV. \_\_\_\_\_  
 DRILLING MEASURED FROM GL ELEV. \_\_\_\_\_  
 DATE 02/26/92  
 RUN NO. 13  
 TYPE LOG DUAL IND.  
 DEPTH-DRILLER 1860  
 DEPTH-LOGGER 1860  
 LOGGED INTERVAL 1860 TO 1550  
 OPERATING RIG TIME TO  
 TYPE FLUID IN HOLE MUD  
 SALINITY, PPM CL \_\_\_\_\_  
 DENSITY-VISCOSITY \_\_\_\_\_  
 LEVEL FULL  
 MAX. REC. TEMP. DEG F. \_\_\_\_\_  
 EQUIPMENT-LOCATION POMPANO BEACH  
 RECORDED BY SALVO  
 WITNESSED BY A. FRATARCANGELLI  
 BOREHOLE RECORD BIT FROM TO SIZE MGT. CASING RECORD FROM TO

ALL INTERPRETATIONS ARE OPINIONS BASED ON INFERENCES FROM ELECTRICAL OR OTHER MEASUREMENTS AND WE CANNOT AND DO NOT GUARANTEE THE ACCURACY OR CORRECTNESS OF ANY INTERPRETATION, AND WE SHALL NOT, EXCEPT IN THE CASE OF GROSS OR WILLFULL NEGLIGENCE ON OUR PART, BE LIABLE OR RESPONSIBLE FOR ANY LOSS, COSTS, DAMAGES, OR EXPENSES INCURRED OR SUSTAINED BY ANYONE RESULTING FROM ANY INTERPRETATION MADE BY ANY OF OUR OFFICERS, AGENTS OR EMPLOYEES. THESE INTERPRETATIONS ARE ALSO SUBJECT TO OUR GENERAL TERMS AND CONDITIONS SET OUT IN OUR CURRENT PRICE SCHEDULE.

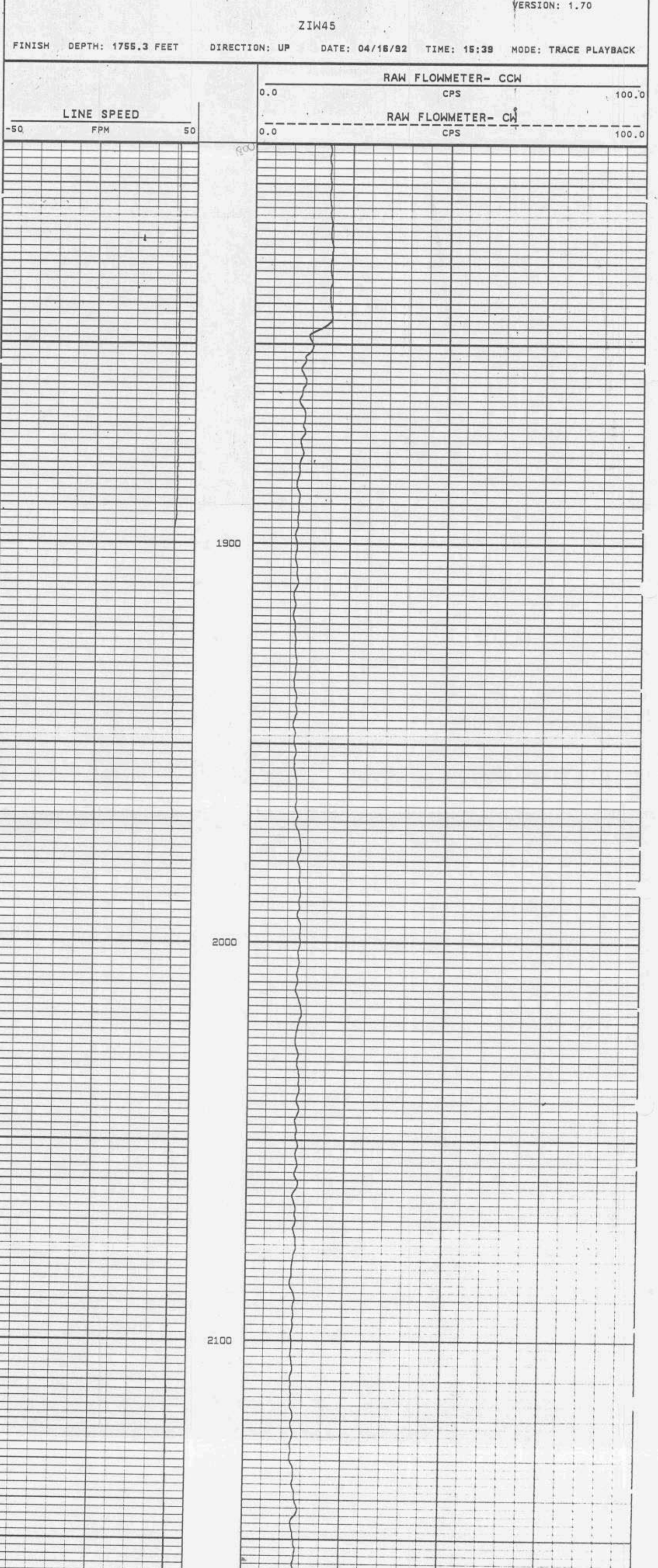
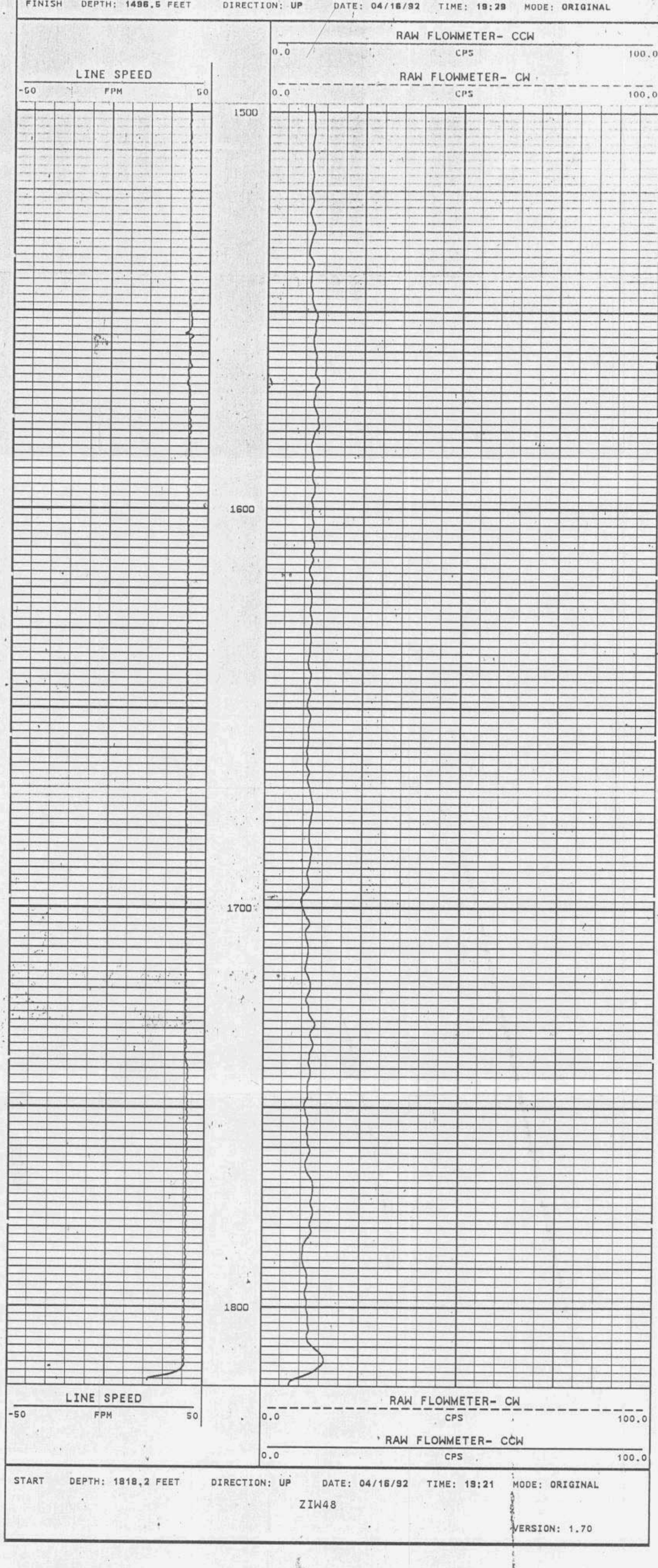


P. 1011  
1565



FILE NO.	SEC. 25	TWP. 42S	RGE. 23E
PERMANENT DATUM	GL	ELEV.	FT. ABOVE PERMANENT DATUM
DRILLING MEASURED FROM	GL	ELEV.	FT. ABOVE PERMANENT DATUM
DATE	04/16/92		
RUN NO.	1	FLOWMETER	
DEPTH-DRILLER	2713		
DEPTH-LOGGER	2710		
LOGGED INTERVAL	2710	TO	1500
OPERATING RIG TIME			
TYPE FLUID IN HOLE			
SALINITY, PPM CL			
LENGTH-VISCOSITY			
MAX. REC. TEMP. DEG. F.			
EQUIPMENT-LOCATION			
RECORDED BY	A. FRATARCANGELI		
WITNESSED BY	SALVO		
BOREHOLE RECORD	POMPADOUR BEACH		
RUN NO.	BIT	FROM	TO
	SIZE	CASTING RECORD FROM	TO

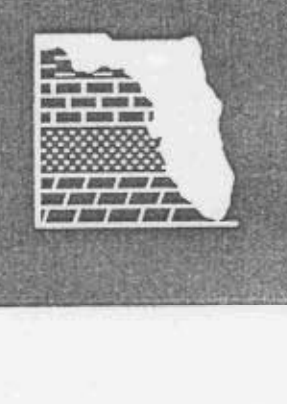
ALL INTERPRETATIONS ARE OPINIONS BASED ON INFERENCES FROM ELECTRICAL OR OTHER MEASUREMENTS AND WE CANNOT AND DO NOT GUARANTEE THE ACCURACY OR CORRECTNESS OF ANY INTERPRETATION, AND WE SHALL NOT, EXCEPT IN THE CASE OF GROSS OR WILLFUL NEGLIGENCE ON OUR PART, BE LIABLE OR RESPONSIBLE FOR ANY LOSS, COSTS, DAMAGES, OR EXPENSES INCURRED OR SUSTAINED BY ANYONE RESULTING FROM ANY INTERPRETATION MADE BY ANY OF OUR OFFICERS, AGENTS OR EMPLOYEES. THESE INTERPRETATIONS ARE ALSO SUBJECT TO OUR GENERAL TERMS AND CONDITIONS SET OUT IN OUR CURRENT PRICE SCHEDULE.



COMPANY YOUNGQUIST BROTHERS DRILLING CO. INC.

WELL TEST/INJECTION WELL

FIELD ZEMEL ROAD LANDFILL STATE FLORIDA





TEMPERATURES  
FLUID RES.  
APR 27 1992  
DELA. SOUTH (58161)

COMPANY: YOUNQUIST BROTHERS DRILLING CO., INC.  
WELL: TEST/INJECTION WELL  
FIELD: ZEMEL ROAD LANDFILL  
COUNTY: CHARLOTTE  
STATE: FLORIDA  
LOCATION: 26DEG47' 29" N, 81DEG57' 53" W  
OTHER SERVICES:

FILE NO.:  
SHEET: 25  
TEMP: 425  
PAGE: 23E

PERMANENT DATUM: ELEV. 425  
LOG MEASURED FROM: FT. ABOVE PERMANENT DATUM  
ELEV. K-B  
D.E. MEASUREMENTS: D.F.  
G.L.

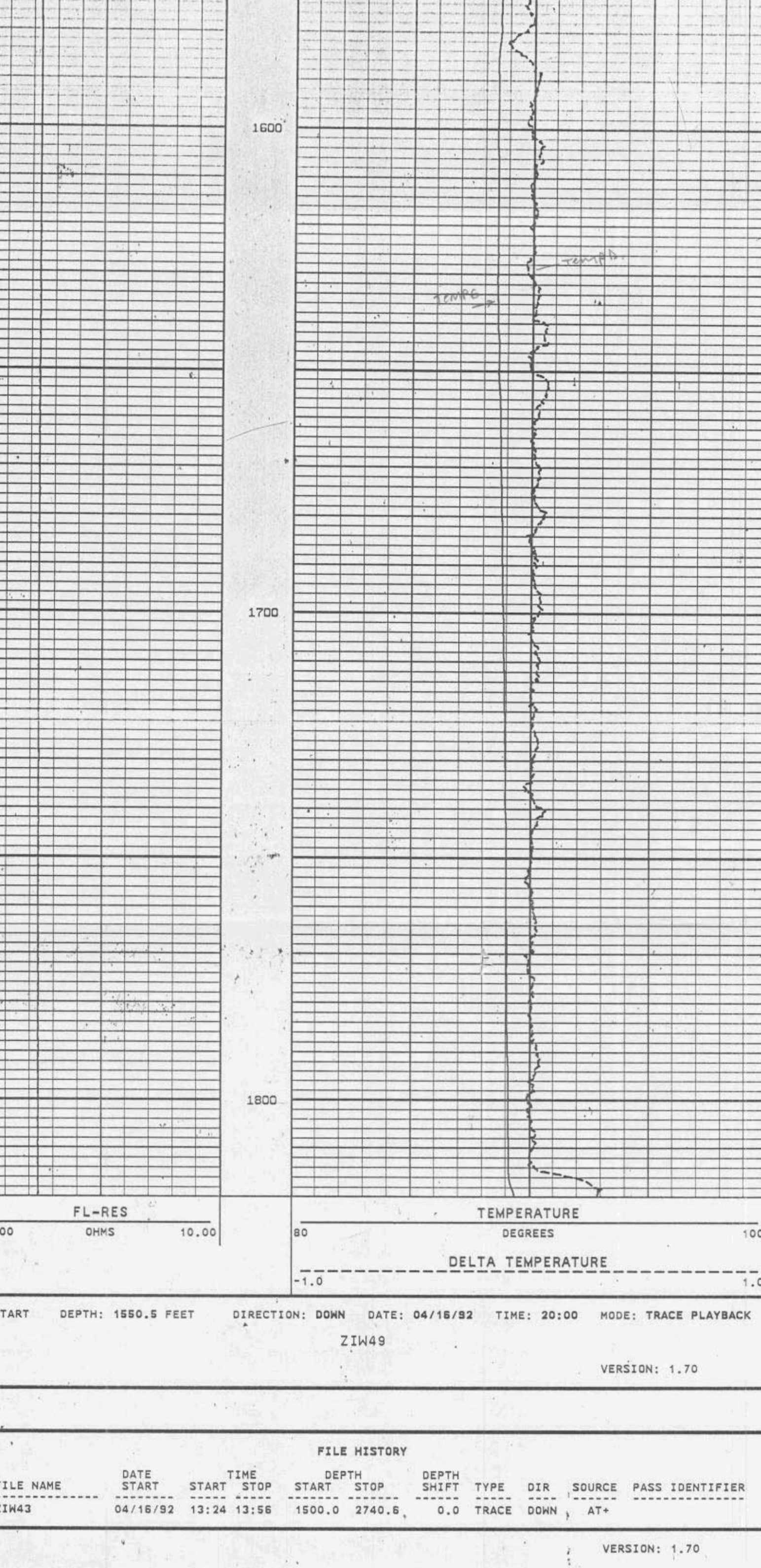
DATE: 04/16/92  
TYPE LOG: TEMP-FL-RES.  
DEPTH-ORDER: 2700 TO 1550  
OPERATING RIG TIME: 2700 TO 1550  
TYPE FLUID IN HOLE: WATER  
SALINITY: PPM CL

DENSITY-VISCOSITY: FULL  
MAX. REC. TEMP. DEG. F.: POMPANO BEACH  
EQUIPMENT-LOCATION: SALVO  
RECORDED BY: A. FRATACONELLI  
WITNESSED BY:

RUN NO. BOREHOLE RECORD TO SIZE Casing Record FROM TO  
BIT FROM TO SIZE KFT. FROM TO

ALL INTERPRETATIONS ARE OPINIONS BASED ON INFERENCES FROM ELECTRICAL OR OTHER MEASUREMENTS AND WE CANNOT AND DO NOT GUARANTEE THE ACCURACY OR CORRECTNESS OF ANY INTERPRETATION, AND WE SHALL NOT, EXCEPT IN THE CASE OF GROSS OR HILLFULL NEGLIGENCE ON OUR PART, BE LIABLE OR RESPONSIBLE FOR ANY LOSS, COSTS, DAMAGES, OR EXPENSES INCURRED OR SUSTAINED BY ANYONE RESULTING FROM ANY INTERPRETATION MADE BY ANY OF OUR OFFICERS, AGENTS OR EMPLOYEES. THESE INTERPRETATIONS ARE ALSO SUBJECT TO OUR GENERAL TERMS AND CONDITIONS SET OUT IN OUR CURRENT PRICE SCHEDULE.

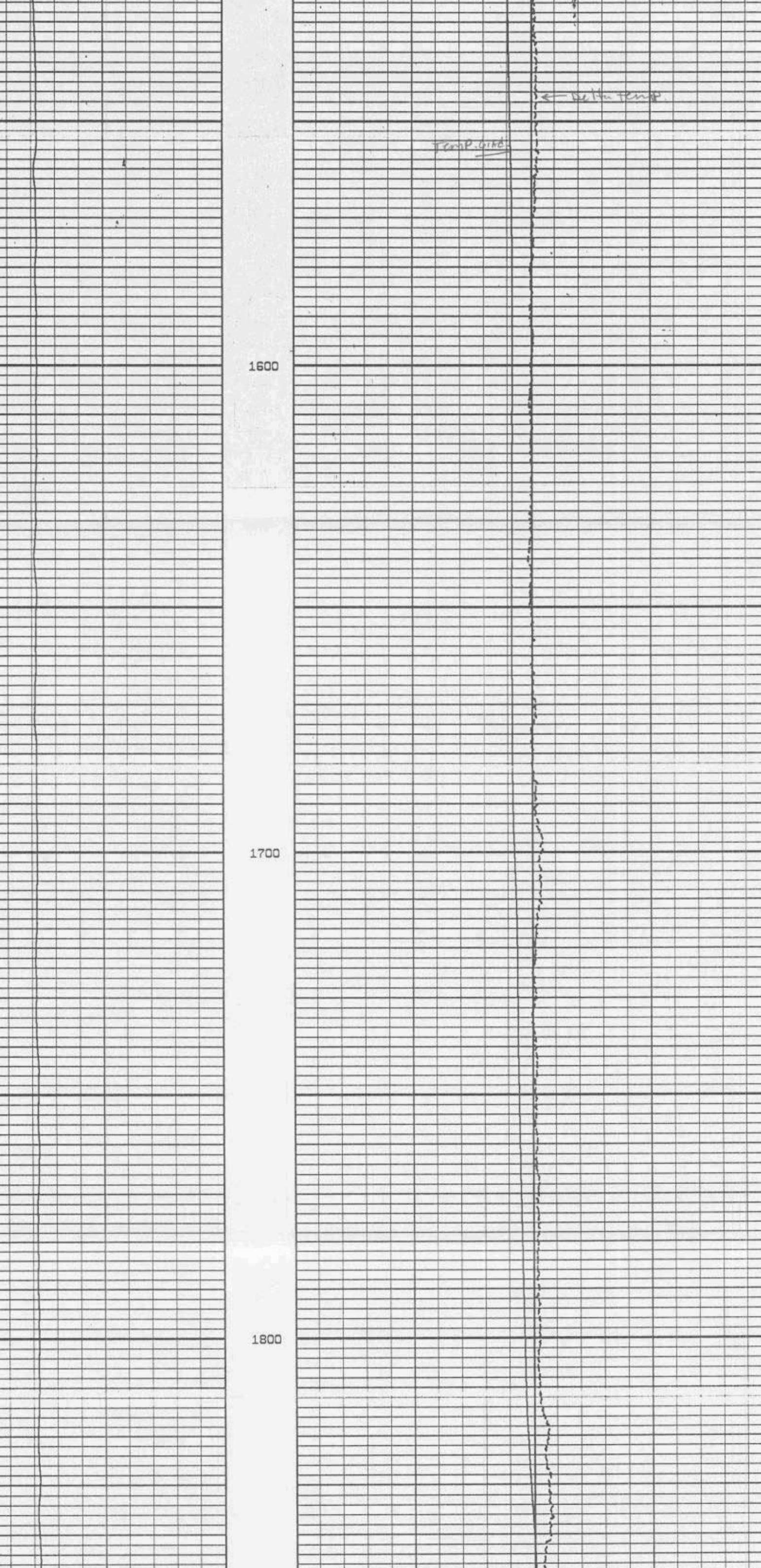
VERSION: 1.70  
ZIW49  
FINISH DEPTH: 1827.2 FEET DIRECTION: DOWN DATE: 04/16/92 TIME: 20:08 MODE: TRACE PLAYBACK



FILE HISTORY

FILE NAME	DATE	START TIME	STOP TIME	START DEPTH	STOP DEPTH	DEPTH SHIFT	TYPE	DIR	SOURCE	PASS IDENTIFIER
ZIW43	04/16/92	13:24	13:58	1500.0	2740.8	0.0	TRACE DOWN		AT+	

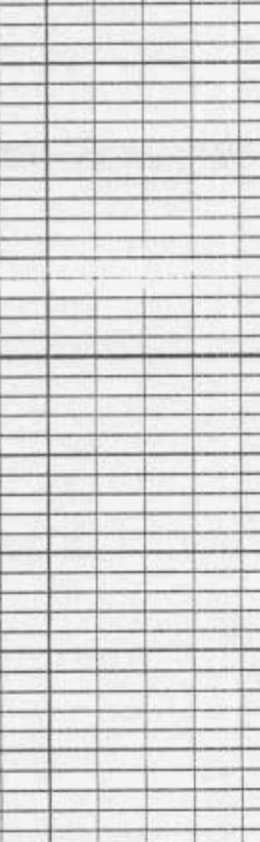
VERSION: 1.70  
ZIW44  
FINISH DEPTH: 2700.0 FEET DIRECTION: DOWN DATE: 04/16/92 TIME: 14:13 MODE: TRACE PLAYBACK

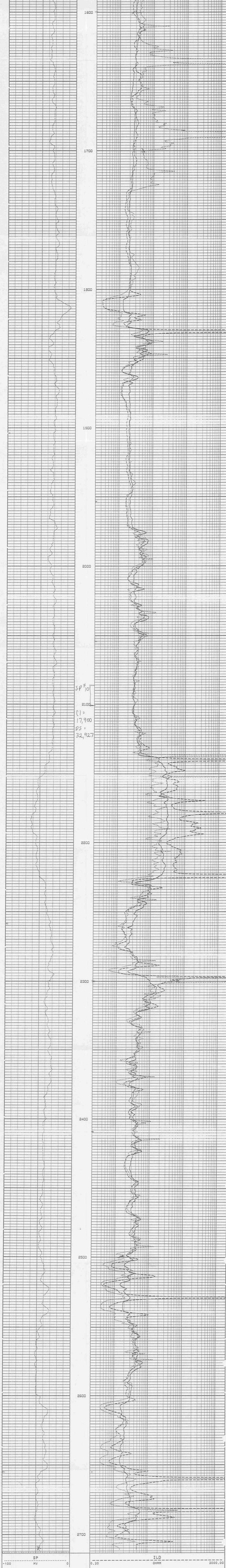


COMPANY: YOUNQUIST BROTHERS DRILLING CO., INC.

WELL: TEST/INJECTION WELL

FIELD: ZEMEL ROAD LANDFILL STATE: FLORIDA





SP# 10  
 C1 = 17,900  
 DS = 32,927

START DEPTH: 2713.1 FEET DIRECTION: UP DATE: 04/15/92 TIME: 14:05 MODE: TRACE PLAYBACK  
 ZIW39  
 VERSION: 1.70

COMPANY YOUNGQUIST BROTHERS DRILLING CO. INC.  
 WELL TEST/INJECTION WELL  
 FIELD ZEMEL ROAD LANDFILL STATE FLORIDA

