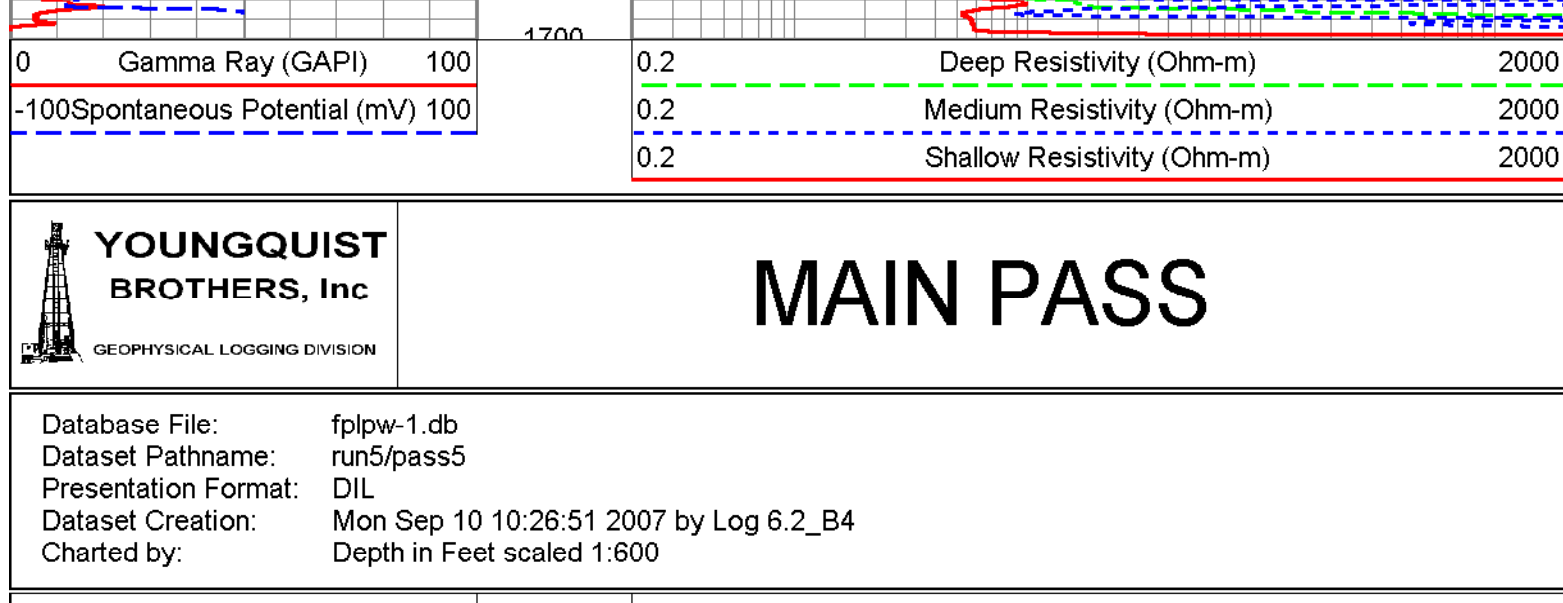
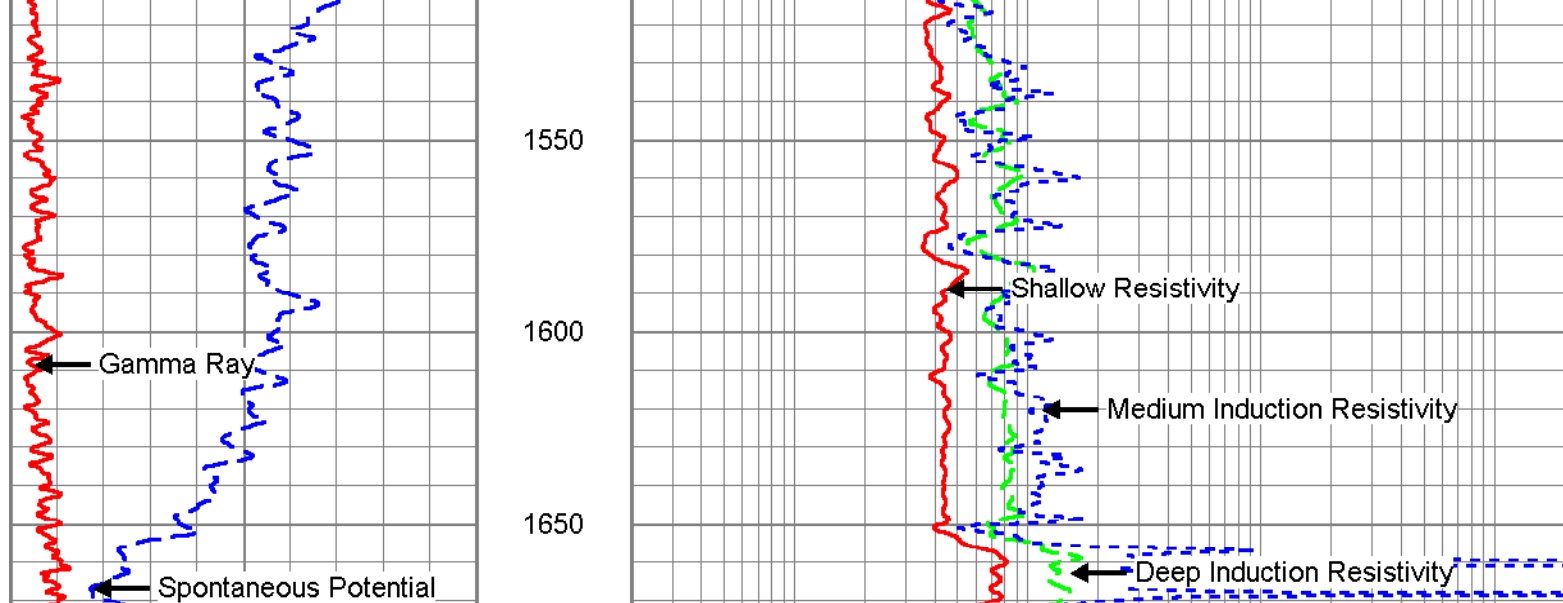
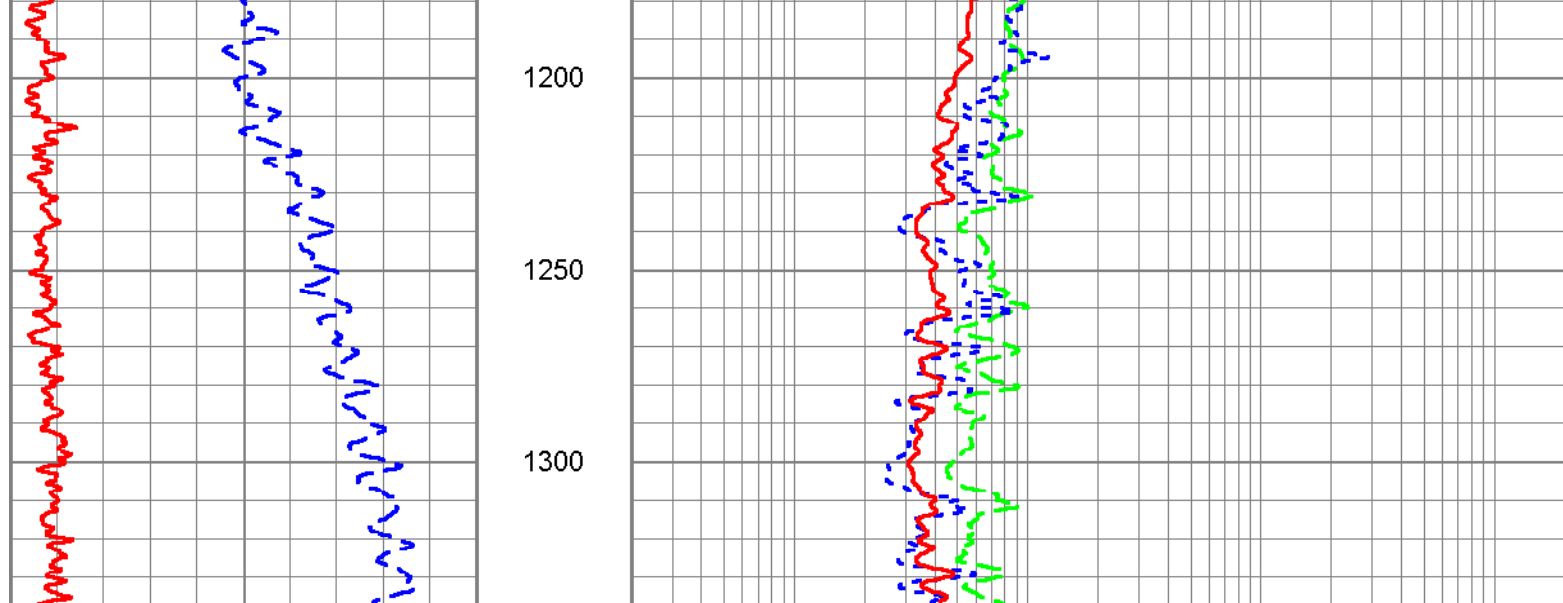


Company						FLORIDA POWER & LIGHT					
Well						PW-1					
Field						WEST COUNTY ENERGY CENTER					
County						PALM BEACH					
State						FL					
Location						West County Energy Center Palm Beach State FL					
Permanent Datum						PAD					
Log Measured From						PAD					
Dialing Measured From						SPAD					
Date						10-SEP-2007					
Depth Driller											
Bottom Logged Interval						1760'					
Open Hole Size						CASSING					
Type Fluid						WATER					
Type Mud						N/A					
Maximum Record Temp						N/A					
Estimated Cement Top						ON ARRIVAL					
Time Well Ready						N/A					
Equipment Number						103					
FT WEMERS											
CATHER											
J TREBENCHS											
Recorded By											
Wireless By											
Run Number						Borehole Record					
SR						From					
1224						To					
TWO						1189'					
CASING						Run No.					
4650'						BT					
274'						From					
TO						TO					
Casing											
Size						Top					
48"						SURFACE					
Surf. China						SURFACE					
Production String						SURFACE					
Line											
28.50 FRP						270'					
17.5 WT						1065'					
Fold Here >>>											

 YOUNGQUIST BROTHERS, Inc <small>GEOPHYSICAL LOGGING DIVISION</small>	<h1>MAIN PASS</h1>
---------------------------------------------------------------------------------------------------------------------------------------------------------------------	--------------------




2 Medium Resistivity (O)



2 Deep Resistivity (Ohm-m)

2 Medium Resistivity (Ohm-m)

2 Shallow Resistivity (Ohm-m)

 YOUNGQUIST BROTHERS, Inc GEOPHYSICAL LOGGING DIVISION	
Database File: Dataset Pathname: Presentation Format: Dataset Creation: Charted by:	flp/pw-1.db run5/pass5 DIL Mon Sep 10 10:26:51 2007 b Depth in Feet scaled 1:240

