

VERTICAL CONTROL TO FT. DENAUIDE
 MAINTAINING WELL, IN HONOLULU CO.
 @ THE END OF NILES ST, IN FT. DENAUIDE

STA	+	H.I.	-	ERM.
B.M.				20.03
	4.26	24.29		
	3.01			
			4.145	20.145
T.P.			3.25	
	3.80	23.945		
	3.47			
			3.84	20.105
T.P.			3.43	
	4.65	24.755		
	2.62			
			4.72	20.035
T.P.			2.55	
	4.14	24.175		
	3.13			

Weather
 DENNIS MCKINNEY PC & IDI - ~~TK~~
 BOBBY SCHAEFER ~~TK~~ - (ABSENT) -- 43/28
 ED VANDERGRIFT ~~TK~~

REMARKS

B.M. IS A CHISELED X-ON EAST END OF
 NORTH COME HEAD WELL, WEST SIDE OF
 BONNOVILLE & NORTH SIDE OF FT. ADAMS AVE.
 IN FT. DENAUIDE

NOTE

B.M. INFO. FROM MERTON HOWARD L.S. INC.
 LABELLE FH. PHONE # (1-860-4331 mobile)

TURN PT.

TURN-PT.

Cont'd Vertical Control Run
to Monitoring Well at end Niles St.

STA	H.I.	-	Elev.	Adj. Elev.
	24.175			
T.P.		4.71 2.56	19.465	
	4.94 2.33		24.405	
T.P.		4.90 2.37	19.505	
	4.77 2.50		24.275	
T.P.		4.12 3.15	20.155	
	4.34 2.93		24.495	
B.M. D-1		3.41 3.86	21.085	21.075

Remarks
H.I. brought Forward

TURN PT.

TURN PT.

TURN PT.

SE R.R. SPIKE IN SOUTH side R.P.#5-8226
-9753-07 ON EAST side of Niles St.
AN THE NORTH END of paved st. AN EAST OF
FT. DENAUDE Monitoring Wells. LOCATED ON
N-side of Niles St.

STILLING WELL F.B.#3

CHECK BACK RUN ON Vertical CONTROL
TO-MONITORING WELL FT. DENAUDA

STA	#	H.F.	-	ELEV.
B.M.				21.085
D-1				
	3.61	24.695		
	3.66			
T.P.			4.55	20.145
			2.72	
	4.08	24.225		
	3.19			
T.P.			4.74	19.485
			2.53	
	4.97	24.455		
	2.30			
T.P.			5.02	19.435
			2.25	
	4.68	24.115		
	2.59			
T.P.			4.08	20.035
			3.19	

STILLING WELL F.B.#3

6-04-92

44

-- 43/28

REMARKS

R.R. SPIKE IN S-SIDE OF P.P. EAST SIDE OF
MILES ST. IN FT. DENAUDA. (SEE pg #43)

TURN PT.

TURN PT.

TURN PT.

TURN PT.

CHECK BACK RUN ON VERTICAL CONTROL
TO MAINTAINING WELL FT. DENAUDA

STA	+ H.I.	-	ELEV.
T.P.			20.035
	4.58 2.69		
T.P.		4.52 2.75	20.095
	3.82 3.45		
T.P.		3.80 3.47	20.115
	4.22 3.05		
B.M.		4.285 2.985	20.05

-- 43/28

REMARKS

T.P. Elev. brought forward

TURN PT.

TURN PT.

TIE BACK TO X- ON SE END. OF CONC Head
Well. West side of Bonneville + North side
of Ft. ADAMS AVE. IN Ft. DENAUDA
(SEE PG. 42 THIS BK.)

Elev. 20.03

20.05
20.03

20.02 ERROR

STILLING WELL F.B.#3

VERTICAL CONTROL ON 2" x 4" MONITORING
WELLS @ FT. DENAUDE, IN HENRY CO.
@ THE NORTH END OF NILES ST IN
FT. DENAUDE.

FOR WELL WITH 2" PVC.

STA #	H.I.	—	ADD. ELEV.	REMARKS
B.M. D-1	2.74 4.53	23.815	21.075	B.M. D-1 RR SPIKE SPP #43
		3.82 3.45	19.995	TOP 2" PVC PIPE
	3.61 3.66	23.605		
B.M. D-1		2.53 4.74	21.075	TIE TO D-1
B.M. D-1		(FOR WELL 4" PVC)	21.075	
	2.90 4.37	23.975		
		4.23 3.04	19.745	TOP 4" PVC PIPE
	3.72 3.55	23.465		
B.M. D-1		2.39 4.88	21.075	TIE BACK TO D-1

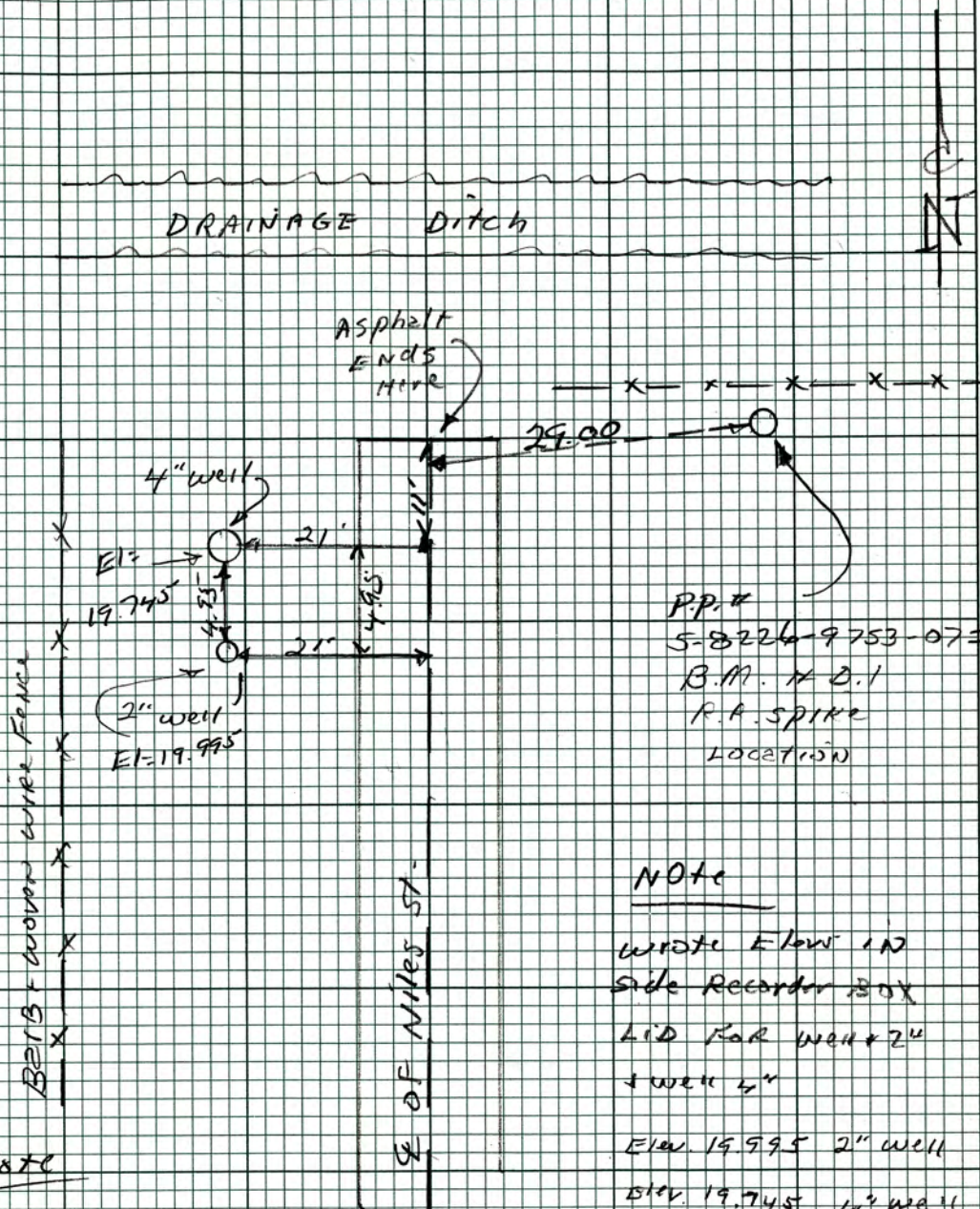
STILLING WELL F.B.#3

6-04-92

40

D. M. KINNEY, P.E. & CO.
ED. VANDERGRIFF, P.

43/28



P.P.#
5-8226-9753-073
B.M. # D-1
R.A. SPIKE
LOCATION

NOTE

WRITE ELEV IN
SIDE RECORDER BOX
LID FOR WELL 2"
+ WELL 4"
ELEV. 19.995 2" WELL
ELEV. 19.745 4" WELL
WITH DATE 6-04-92

NOTE

WE USE SAME BLACK
MAGIC MARKS ON
2" x 4" PVC PIPE AS THEY USED.