



RMBAKER LLC

WELL HE-557
UWI HE-557

Geology and Geophysics

8600 Oldbridge Lane
Orlando, FL 32819
mobile ph 407-733-8958

LOG STAGE EXPLORATORY

rob@rmbaker.com
www.rmbaker.com

HEADER NOTES:
STEEL CENTRALIZER EFFECTS ON INDUCTION CURVES

COMP	RMBAKER LLC
LOC	HENDRY COUNTY
FLD	LOWER WEST COAST
CNTY	HENDRY
STAT	FL
PROV	FL
CTRY	USA

LATI	26.710712	X		ALL SERVICES: DUAL INDUCTION NATURAL GAMMA
LONG	-81.518085	Y		
GDAT	WGS84	HDAT		
SEC		ELEV		
TWP		V DAT		
RGE				

PERMANENT DATUM:

LOG MEASURED FROM: GROUND SURFACE

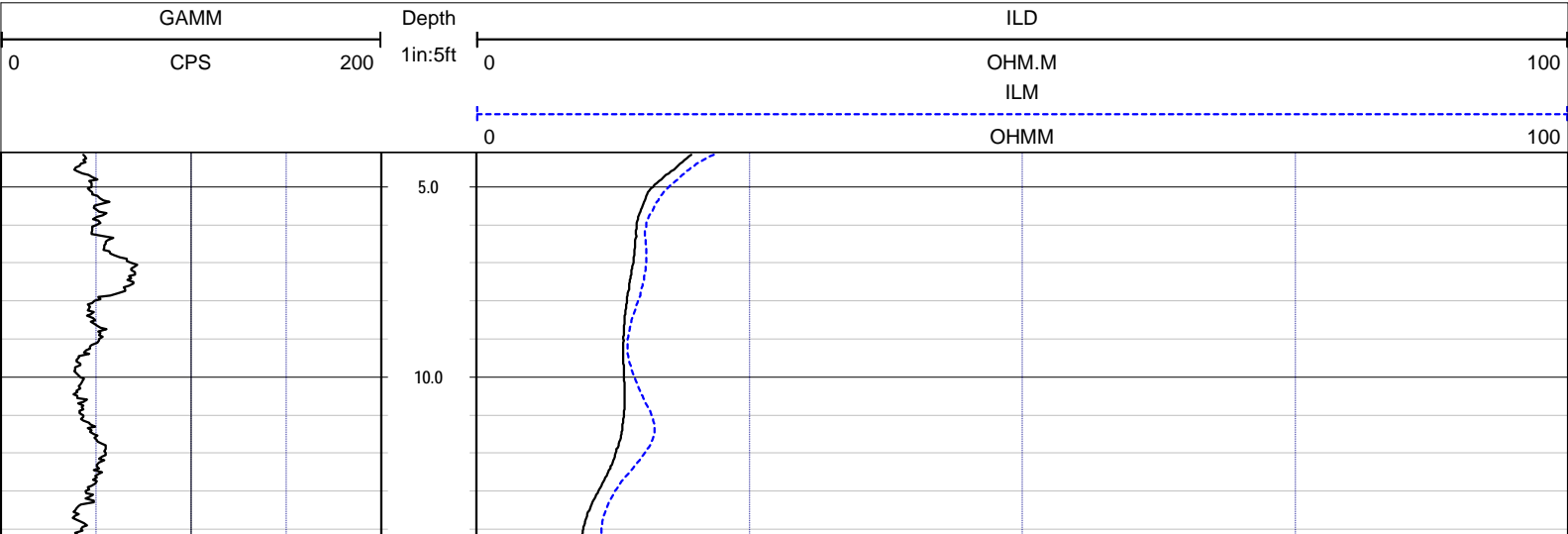
DRILLING MEASURED FROM:

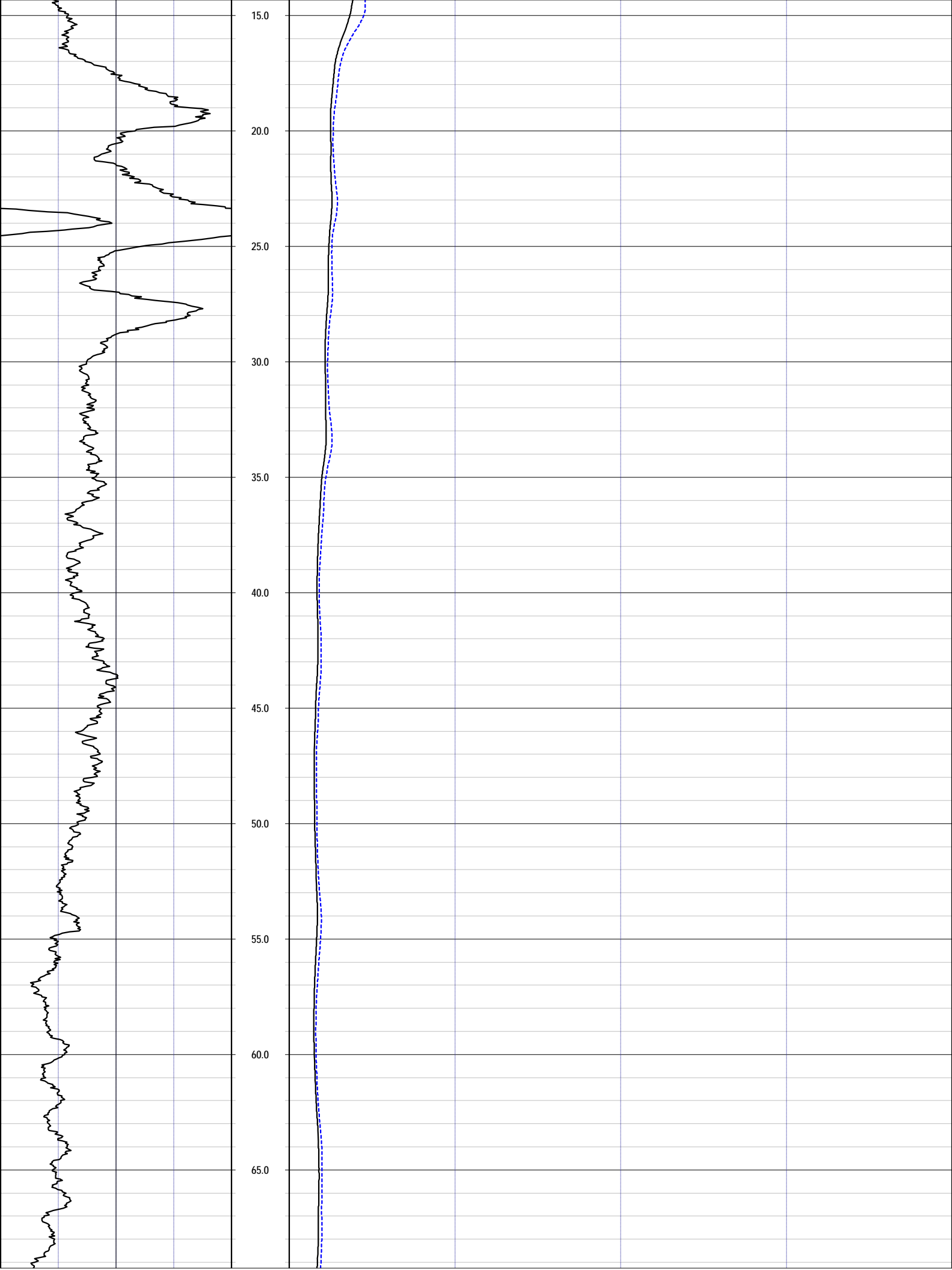
DATE	24 Aug 15	TYPE FLUID IN HOLE	WATER
RUN No	1	LOGGING SPEED (FT/MIN)	30
TYPE LOG	DUAL INDUCTION	TROLLING DIRECTION	UP
DEPTH-DRILLER		PUMPING RATE (GPM)	N/A
DEPTH-LOGGER	100		
DRILLER			
RECORDED BY	RMB		
SRVC	RMBAKER LLC	API	N/A
WITNESSED BY	E. GEDDES	LIC	N/A

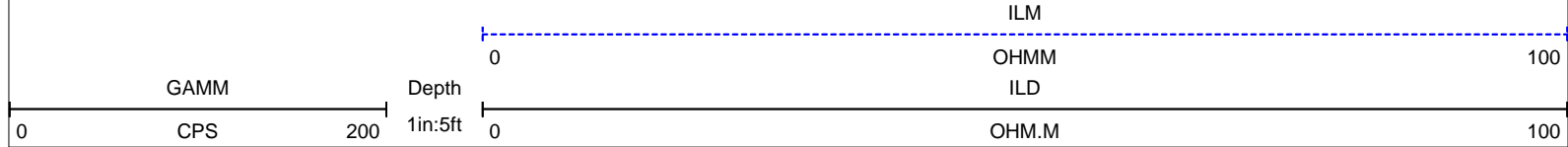
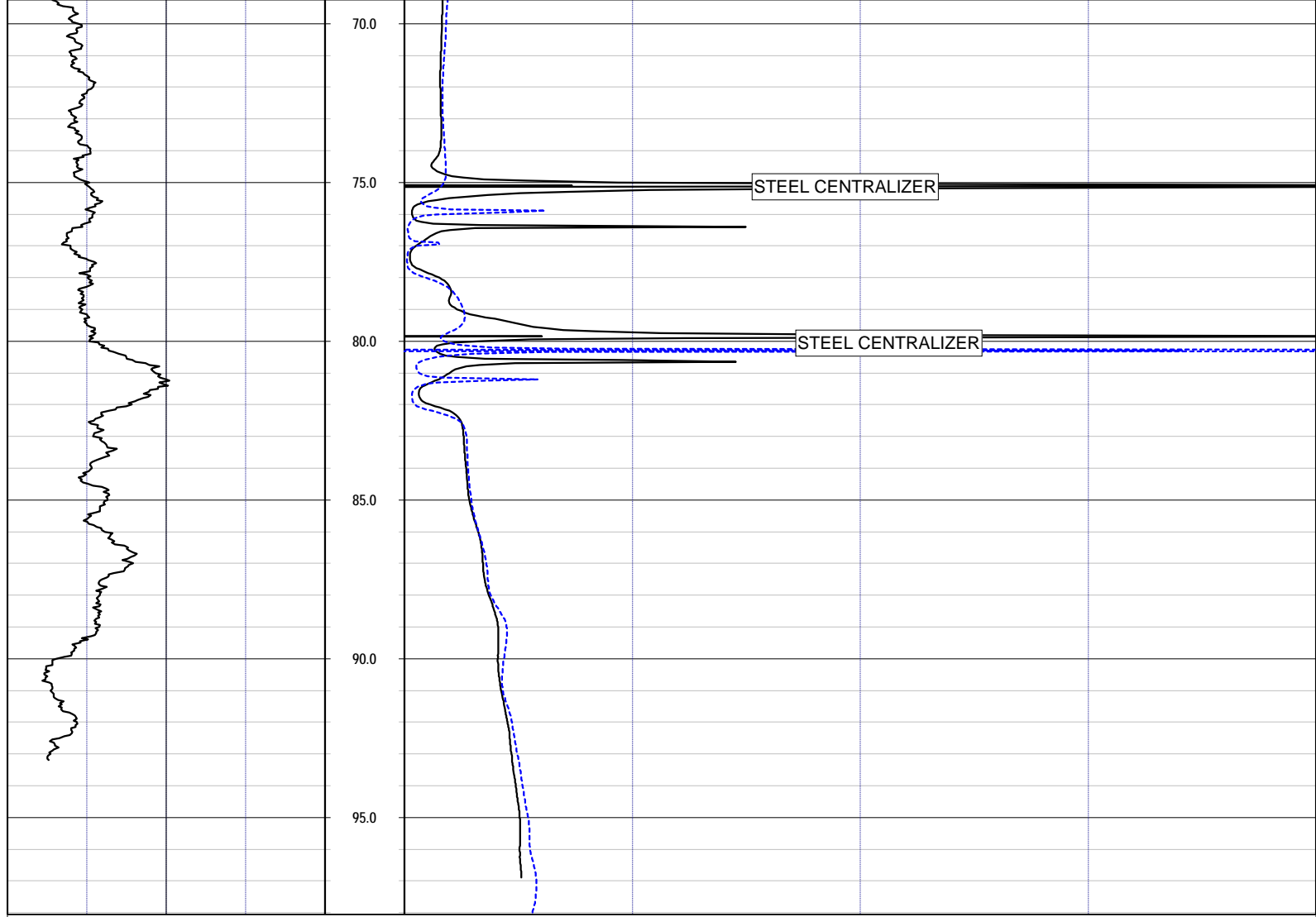
BOREHOLE RECORD		CASING RECORD				
RUN NO.	BIT FROM	TO	SIZE	MAT.	FROM	TO
1			4	PVC	0	100

LOG CODES

3-arm caliper	CAL	long normal resistivity	RLN	deep induction conductivity	IDC
natural gamma (CPS)	GAMM	8 inch resistivity	R8	shallow induction conductivity	ISC
spontaneous potential	ESP	32 inch resistivity	R32	sonic interval velocity	DT
single point resistance	RES	deep induction resistivity	ILD	sonic porosity (RHG method)	SPHI
short normal resistivity	RSN	shallow induction resistivity	ILM	repeat designation	R







NOTES:

While due care has been exercised in the performance of these measurements and observations, in accordance with methodologies utilized by the general practitioner, RMLBAKER LLC can make no representations, warranties, or guarantees with respect to latent or concealed conditions that may exist, which may be beyond the detection capabilities of the methodologies used, or that may extend beyond the areas and depths surveyed. The geophysical well logs show subsurface conditions as they existed at the dates and locations shown, and it is not warranted that they are representative of subsurface conditions at other locations and times. If, at any time, different subsurface conditions from those observed are determined to be present, we must be advised and allowed to review and revise our observations if necessary.

Certificate of Authorization GB 458

END OF LOG