



# RMBAKER LLC

Geology and Geophysics

WELL: DR2D  
LOG STAGE: EXPLORATORY

8600 Oldbridge Lane  
Orlando, FL 32819  
mobile ph 407-733-8958  
fax 407-370-4129

**LOGS PROVIDED:**  
INDUCTION RESISTIVITIES  
NATURAL GAMMA

rob@rmbaker.com  
www.rmbaker.com

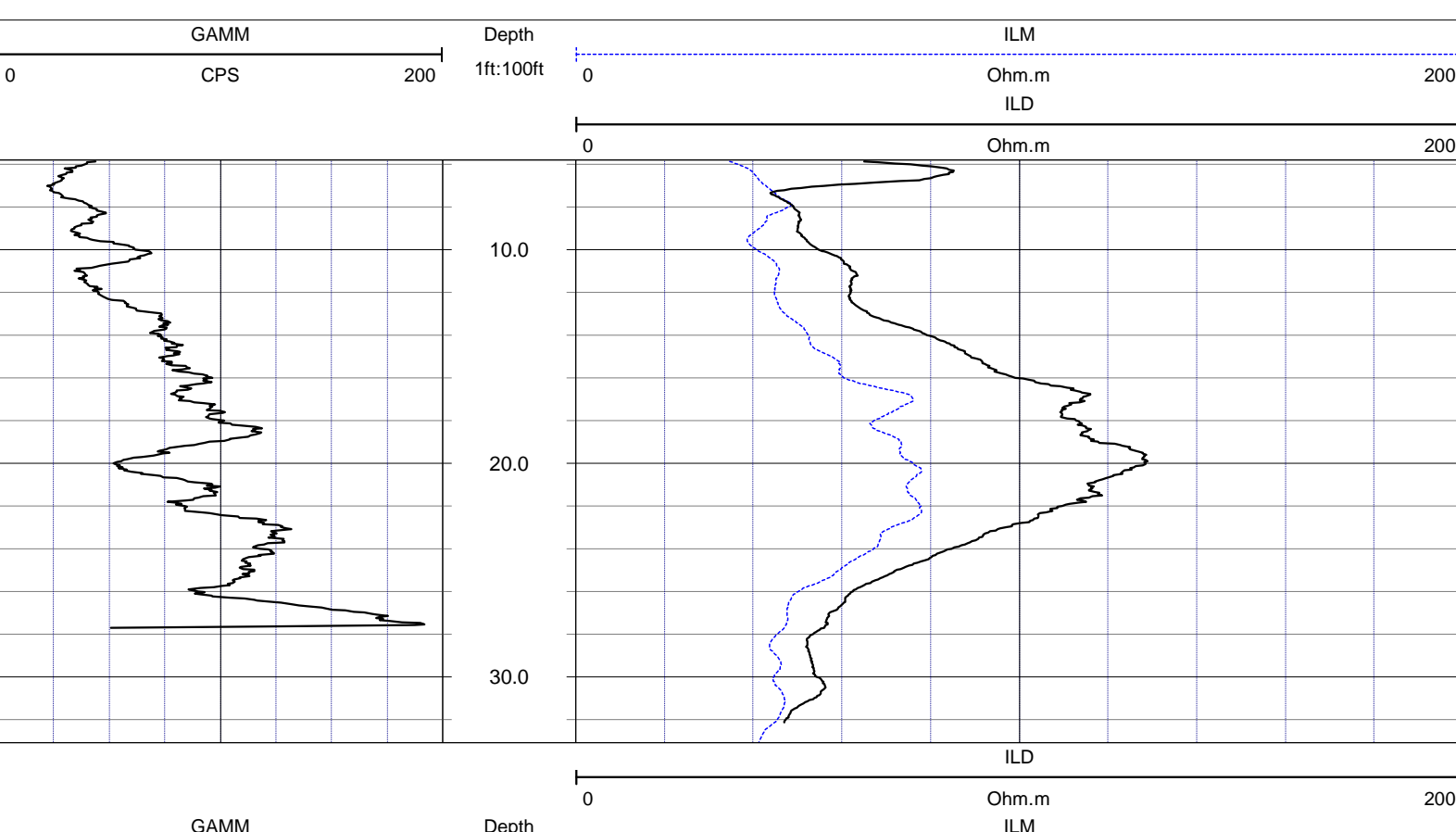
Licensed and Insured

SRVC	RMBAKER LLC	COMPANY:	RMBAKER LLC
UWI	DR2D	WELL NAME:	DR2D
FLD	L-8 RESERVOIR	FIELD:	L-8 RESERVOIR
PROV	FL	COUNTRY:	USA STATE: FL COUNTY: PALM BEACH
CTY	PALM BEACH	LOC:	N/A
		NOTES:	ALL SERVICES: DUAL INDUCTION NATURAL GAMMA VIDEO
PERMANENT DATUM:		SEC	TWP
		RGE	
LOG MEAS. FROM: TOP OF PVC CASING		ELEVATION:	COORDINATES: -80D21M27.38S 26D43M27.21S
DRILLING MEAS. FROM:			

DATE	14 May 14	TYPE FLUID IN HOLE	WATER	
RUN No	1	SALINITY		
TYPE LOG	DUAL INDUCTION	DENSITY		
DEPTH-DRILLER		LEVEL		
DEPTH-LOGGER	34.9 (VIDEO)	MAX. REC. TEMP.		
BTM LOGGED INTERVAL		LOGGING SPEED (FT/MIN)	20	
TOP LOGGED INTERVAL		TROLLING DIRECTION	UP	
DRILLER		PUMPING RATE (GPM)		
RECORDED BY	RMBAKER LLC			
WITNESSED BY	J. JANZEN			

BOREHOLE RECORD		CASING RECORD				
RUN NO.	BIT FROM	TO	SIZE	MAT.	FROM	TO
1			2	PVC	0	34.9
			SCREEN		29.7	34.2



0

CPS

200

1ft:100ft

0

Ohm.m

200

**NOTES:**

While due care has been exercised in the performance of these measurements and observations, in accordance with methodologies utilized by the general practitioner, RMBAKER LLC can make no representations, warranties, or guarantees with respect to latent or concealed conditions that may exist, which may be beyond the detection capabilities of the methodologies used, or that may extend beyond the areas and depths surveyed.  
The geophysical well logs show subsurface conditions as they existed at the dates and locations shown, and it is not warranted that they are representative of subsurface conditions at other locations and times.  
If, at any time, different subsurface conditions from those observed are determined to be present, we must be advised and allowed to review and revise our observations if necessary.

Certificate of Authorization GB 458

**END OF LOG**