

Company: Lake Worth Utilities  
 Well: F-1  
 Field: Lake Worth  
 County: Palm Beach  
 State/Private: State/Private  
 Location: City of Lake Worth  
 Other Services: XYGR

City of Lake Worth  
 Water Treatment Plant  
 JLA Geosciences, Inc.

Permanent Datum  
 Log Measured From: G.L.  
 Elevation: 25  
 G.L.:  
 G.L.: 25

City of Lake Worth  
 Water Treatment Plant  
 JLA Geosciences, Inc.

Permanent Datum  
 Log Measured From: G.L.  
 Elevation: 25  
 G.L.:  
 G.L.: 25

Date: 17/FEB/2005  
 Date Entered: 17/FEB/2005  
 Date Logged: 10/7  
 Date Logged: 10/7  
 Date Logged: 20/7

Operator: JLA Geosciences, Inc.  
 Logged By: JLA Geosciences, Inc.  
 Recorded By: JLA Geosciences, Inc.  
 Rechecked By: JLA Geosciences, Inc.  
 Funnelhead: JLA Geosciences, Inc.  
 One: JLA Geosciences, Inc.  
 Two: JLA Geosciences, Inc.

Charted by: JLA Geosciences, Inc.

Estimated Depth: 10  
 Estimated Temperature: 12.55  
 Estimated Temperature: 12.55  
 Estimated Temperature: 12.55

Time Logged on Bottom: 09:30:17/105  
 Instrument Number: WMSST  
 F: SMIWA  
 Recorded By: JLA Geosciences, Inc.  
 Rechecked By: JLA Geosciences, Inc.  
 Funnelhead: JLA Geosciences, Inc.  
 One: JLA Geosciences, Inc.  
 Two: JLA Geosciences, Inc.

Operator: JLA Geosciences, Inc.  
 Logged By: JLA Geosciences, Inc.  
 Recorded By: JLA Geosciences, Inc.  
 Rechecked By: JLA Geosciences, Inc.  
 Funnelhead: JLA Geosciences, Inc.  
 One: JLA Geosciences, Inc.  
 Two: JLA Geosciences, Inc.

Charted by: JLA Geosciences, Inc.

Estimated Depth: 10  
 Estimated Temperature: 12.55  
 Estimated Temperature: 12.55  
 Estimated Temperature: 12.55

Time Logged on Bottom: 09:30:17/105  
 Instrument Number: WMSST  
 F: SMIWA  
 Recorded By: JLA Geosciences, Inc.  
 Rechecked By: JLA Geosciences, Inc.  
 Funnelhead: JLA Geosciences, Inc.  
 One: JLA Geosciences, Inc.  
 Two: JLA Geosciences, Inc.

Operator: JLA Geosciences, Inc.  
 Logged By: JLA Geosciences, Inc.  
 Recorded By: JLA Geosciences, Inc.  
 Rechecked By: JLA Geosciences, Inc.  
 Funnelhead: JLA Geosciences, Inc.  
 One: JLA Geosciences, Inc.  
 Two: JLA Geosciences, Inc.

Charted by: JLA Geosciences, Inc.

Estimated Depth: 10  
 Estimated Temperature: 12.55  
 Estimated Temperature: 12.55  
 Estimated Temperature: 12.55

Time Logged on Bottom: 09:30:17/105  
 Instrument Number: WMSST  
 F: SMIWA  
 Recorded By: JLA Geosciences, Inc.  
 Rechecked By: JLA Geosciences, Inc.  
 Funnelhead: JLA Geosciences, Inc.  
 One: JLA Geosciences, Inc.  
 Two: JLA Geosciences, Inc.

Operator: JLA Geosciences, Inc.  
 Logged By: JLA Geosciences, Inc.  
 Recorded By: JLA Geosciences, Inc.  
 Rechecked By: JLA Geosciences, Inc.  
 Funnelhead: JLA Geosciences, Inc.  
 One: JLA Geosciences, Inc.  
 Two: JLA Geosciences, Inc.

Charted by: JLA Geosciences, Inc.

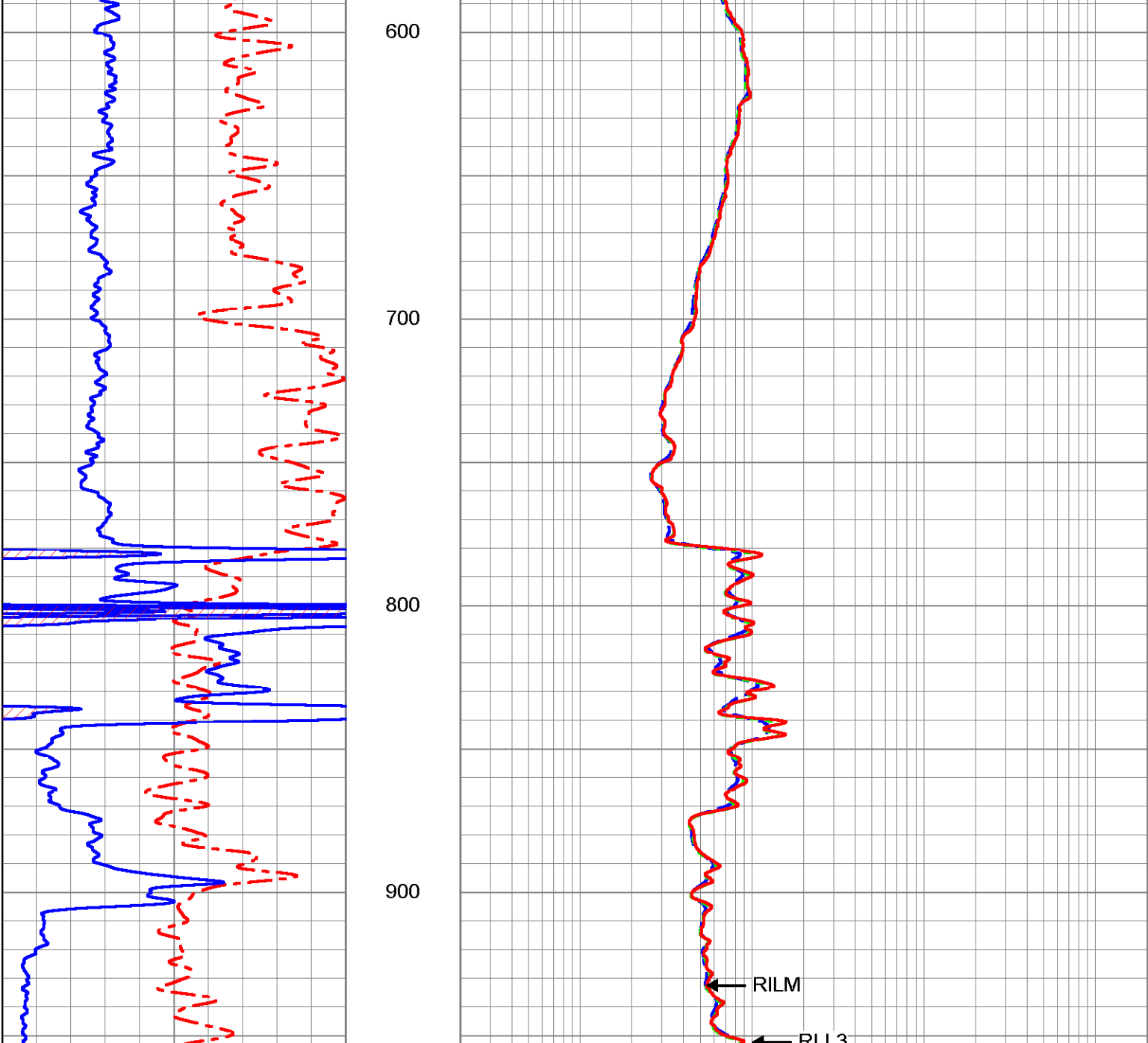
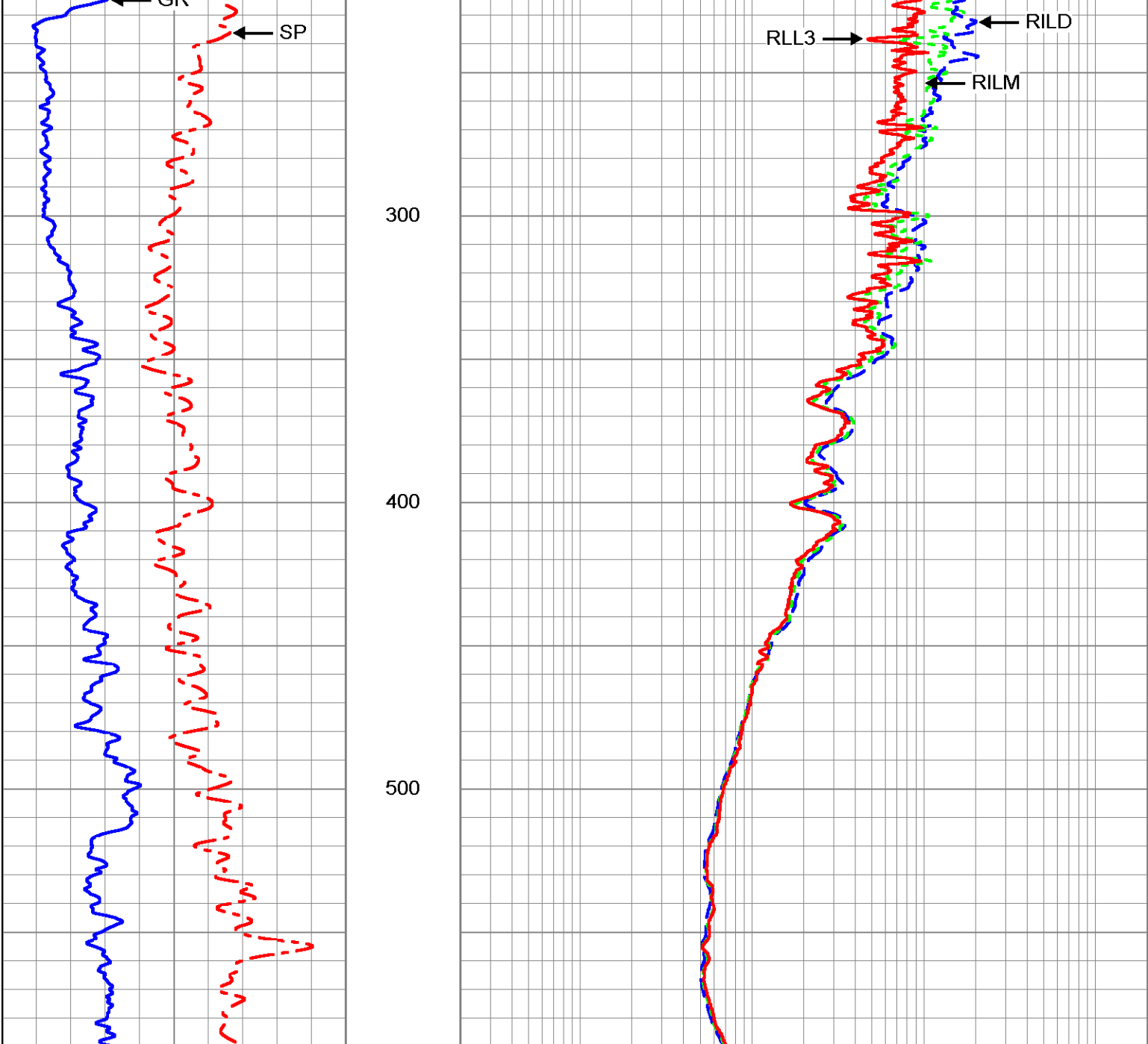
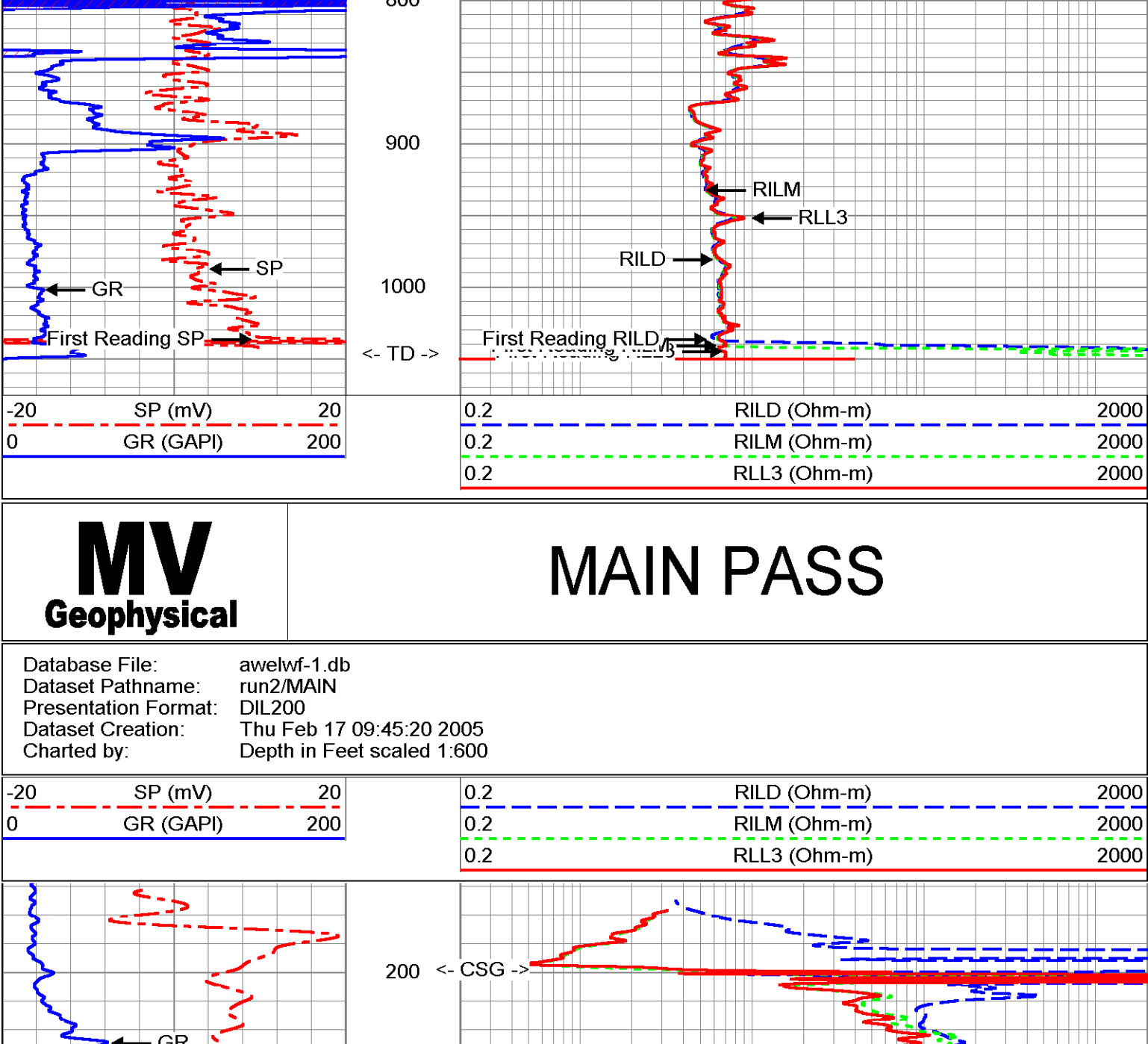
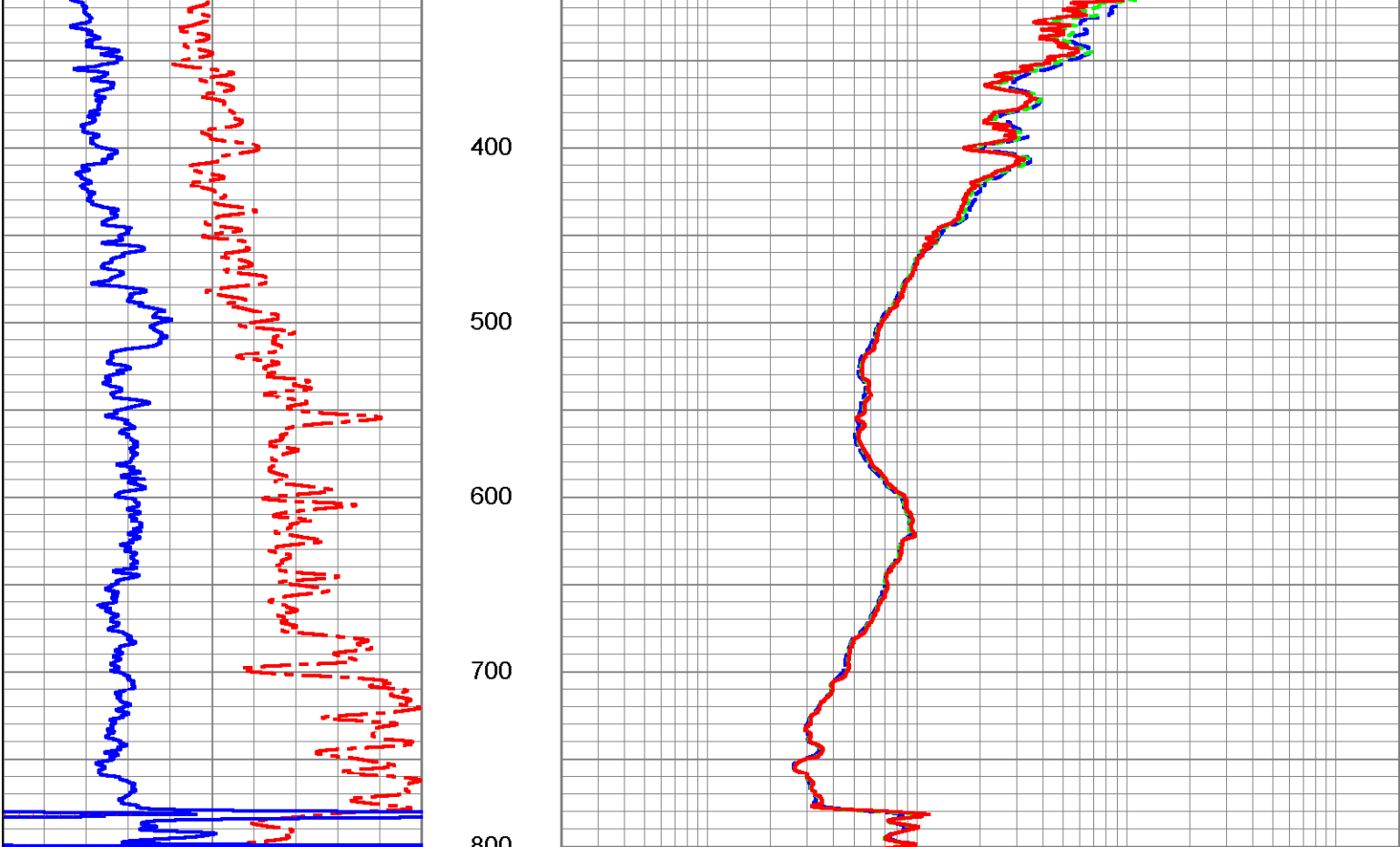
<<< FOLD HERE >>>

All interpretations are opinions based on inferences from electrical or other measurements and we cannot and do not guarantee the accuracy or correctness of any interpretation, and we shall not, except in the case of gross or willful negligence on our part, be liable or responsible for any loss, costs, damages, or expenses incurred or sustained by anyone resulting from any interpretation made by any of our officers, agents or employees. These interpretations are also subject to our general terms and conditions set out in our current Price Schedule.

Comments

Rm=4.763 OHM-M @ 81.4 degF

Drilling Contractor: All Webb Enterprises, Inc.



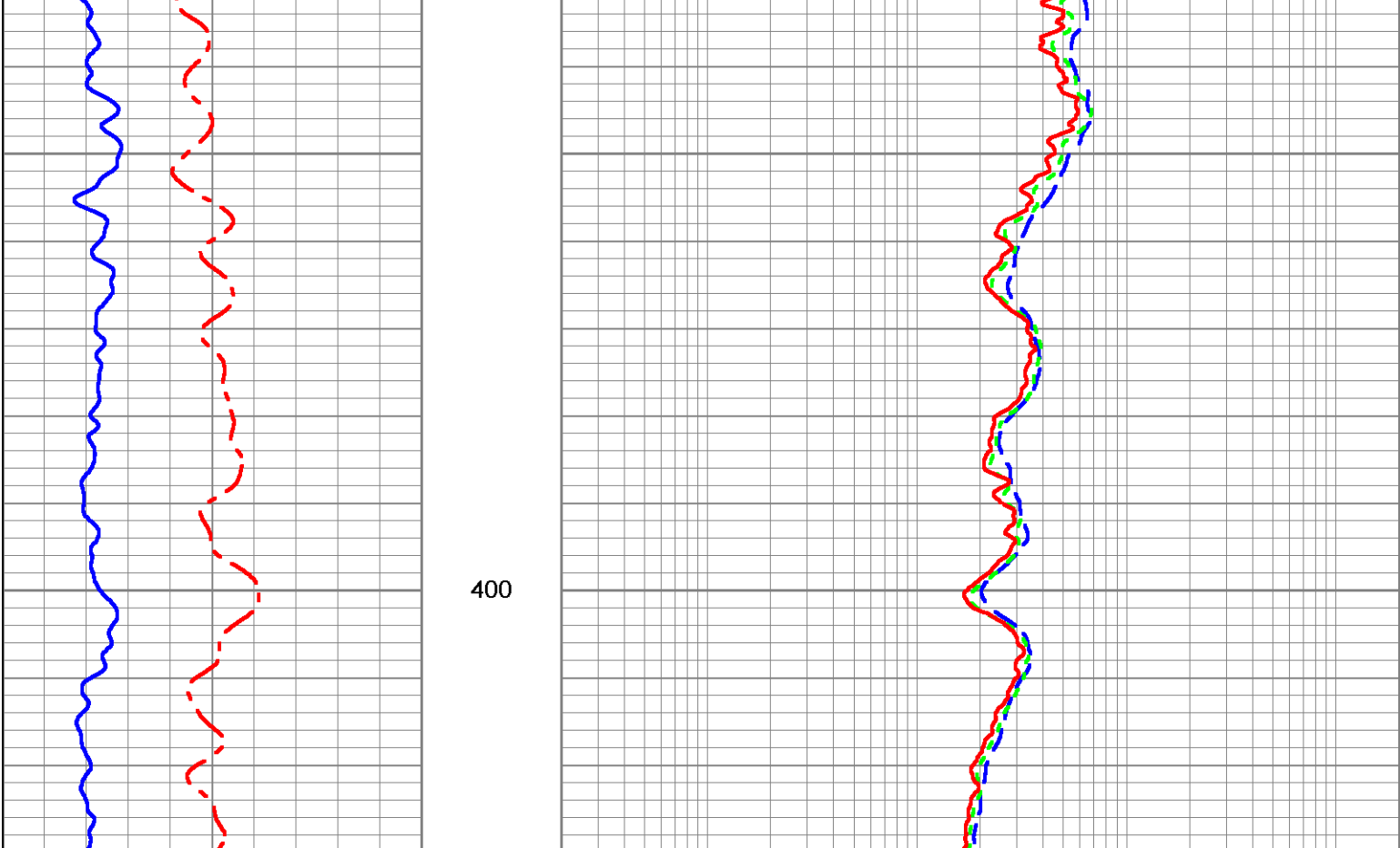
### Dual Induction Calibration Report

Serial-Model: 5390-R  
 Surface Cal Performed: Mon Feb 24 16:52:46 2003  
 Downhole Cal Performed: Thu Feb 17 09:28:07 2005  
 After Survey Verification Performed: Thu Feb 17 10:23:23 2005

Surface Calibration	Readings		References		Results	
	Air	Loop	Air	Loop	m	b
Deep	0.041	0.637	0.000	400.000	670.900	-27.223
Medium	-0.006	0.700	0.000	464.000	656.366	4.251
Internal:	Zero	Cal	Zero	Cal	m	b
Deep	0.011	0.647	0.000	400.000	628.552	-6.783
Medium	-0.011	0.749	0.000	464.000	610.612	6.720

Downhole Calibration	Readings		References		Results	
	Zero	Cal	Zero	Cal	m	b
Internal:	Zero	Cal	Zero	Cal	m	b
Deep	-18.656	389.191	-19.983	406.966	1.047	-0.453
Medium	13.185	479.828	-2.972	495.796	1.069	-17.064
Shallow	2.503	0.429	494.500	2.000	237.533	-99.966

After Survey Verification	Readings		Targets		Results	
	Zero	Cal	Zero	Cal	m'	b'
Internal:	Zero <td>Cal <td>Zero <td>Cal <td>m' <th>b'</th> </td></td></td></td>	Cal <td>Zero <td>Cal <td>m' <th>b'</th> </td></td></td>	Zero <td>Cal <td>m' <th>b'</th> </td></td>	Cal <td>m' <th>b'</th> </td>	m' <th>b'</th>	b'
Deep	-18.800	399.915	-18.656	389.191	1.047	-0.453
Medium	13.585	489.811	13.185	479.828	1.069	-17.064
Shallow	494.742	-93.890	494.500	2.000	0.837	80.557



Dataset: run2/pas5  
 Total Length: 20.90 ft  
 Total Weight: 345.00 lb  
 O.D.: 4.00 in