



RMBAKER LLC

WELL L63N
UWI L63N

Geology and Geophysics

8600 Oldbridge Lane

Orlando, FL 32819

mobile ph 407-733-8958

rob@rmbaker.com

www.rmbaker.com

PROFESSIONAL LICENSES
Geologist PG2186
Licensed Geology Business

HEADER NOTES:

COMP	SFWMD
LOC	L63N CONTINUOUS CORE
FLD	L63N CONTINUOUS CORE
CNTY	OKEECHOBEE
STAT	FL
PROV	FL
CTRY	USA
LATI	X
LONG	Y
GDAT	WGS84
SEC	HDAE
TWP	ELEV
RGE	V DAT

PERMANENT DATUM:
LOG MEASURED FROM: GROUND SURFACE
DRILLING MEASURED FROM: FLOW CONTROL FLANGE-29 INCHES A.G.

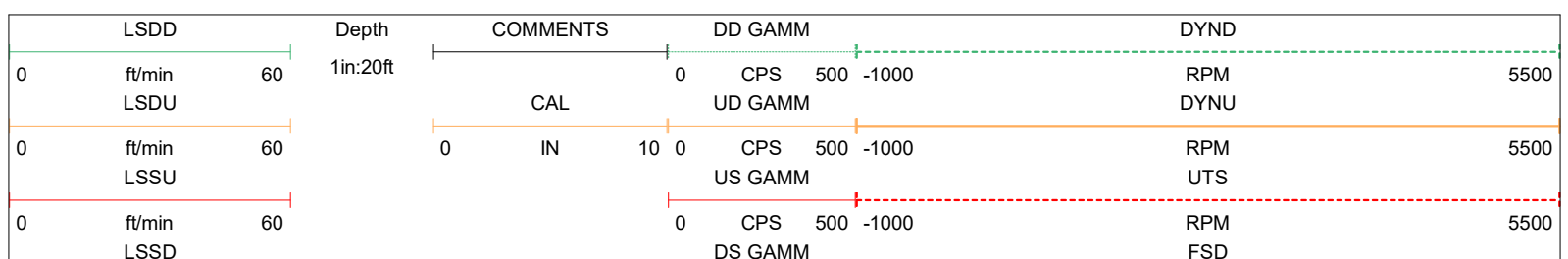
DATE	26 Mar 21	TYPE FLUID IN HOLE	WATER
RUN No	2	LOGGING SPEED (FT/MIN)	30
TYPE LOG	FLOWMETER	TROLLING DIRECTION	BOTH
DEPTH-DRILLER	1360	PUMPING RATE (GPM)	NATURAL FLOW
DEPTH-LOGGER	1357.05		
DRILLER	HUSS DRILLING		
RECORDED BY	RMB		
SRVC	RMBAKER LLC	API	N/A
WITNESSED BY	STANTEC	LIC	N/A

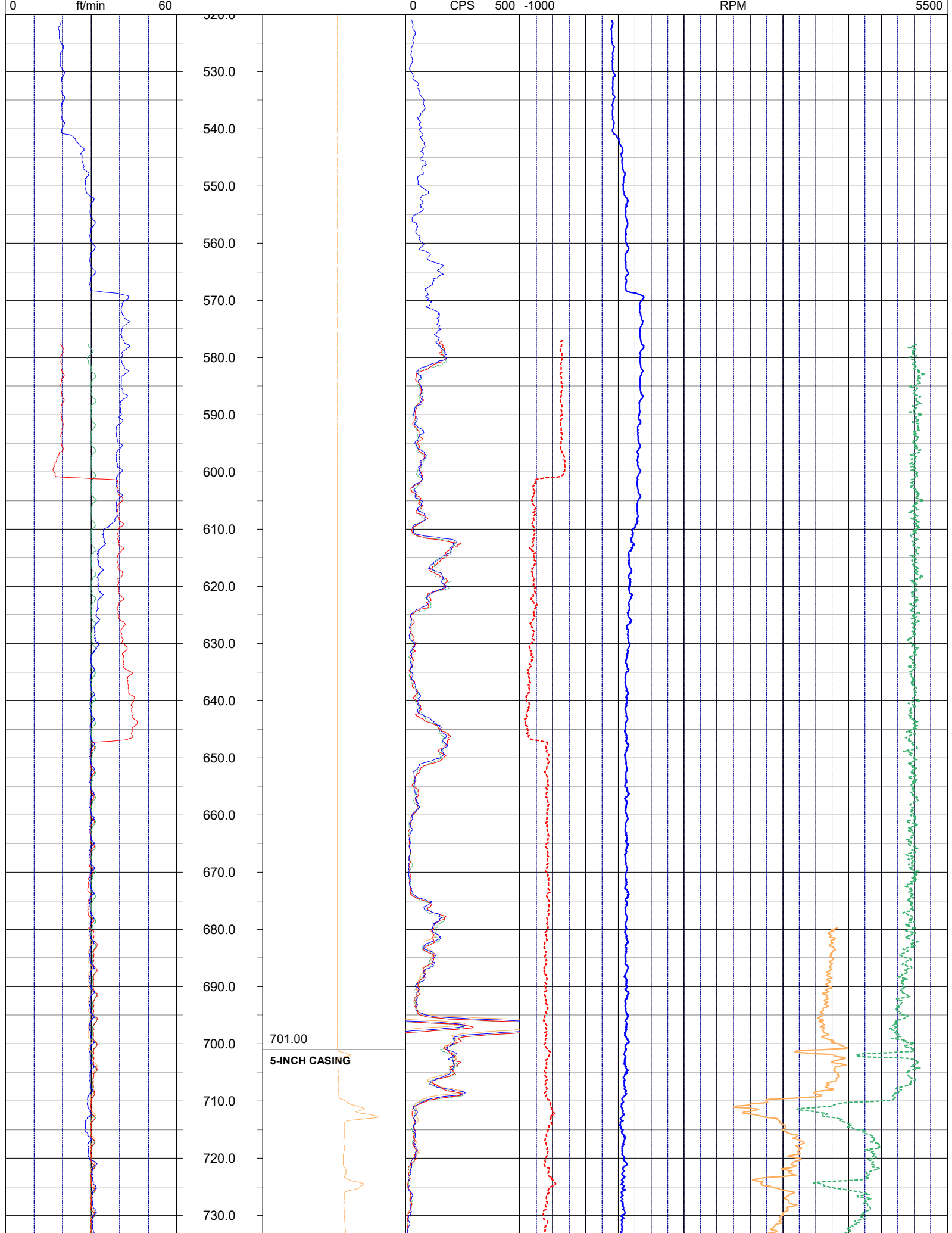
BOREHOLE RECORD		CASING RECORD				
RUN NO.	BIT FROM	TO	SIZE	MAT.	FROM	TO
1	5.875	165	703	STEEL	0	165
2	4.875	701	1357.05	STEEL	0	701

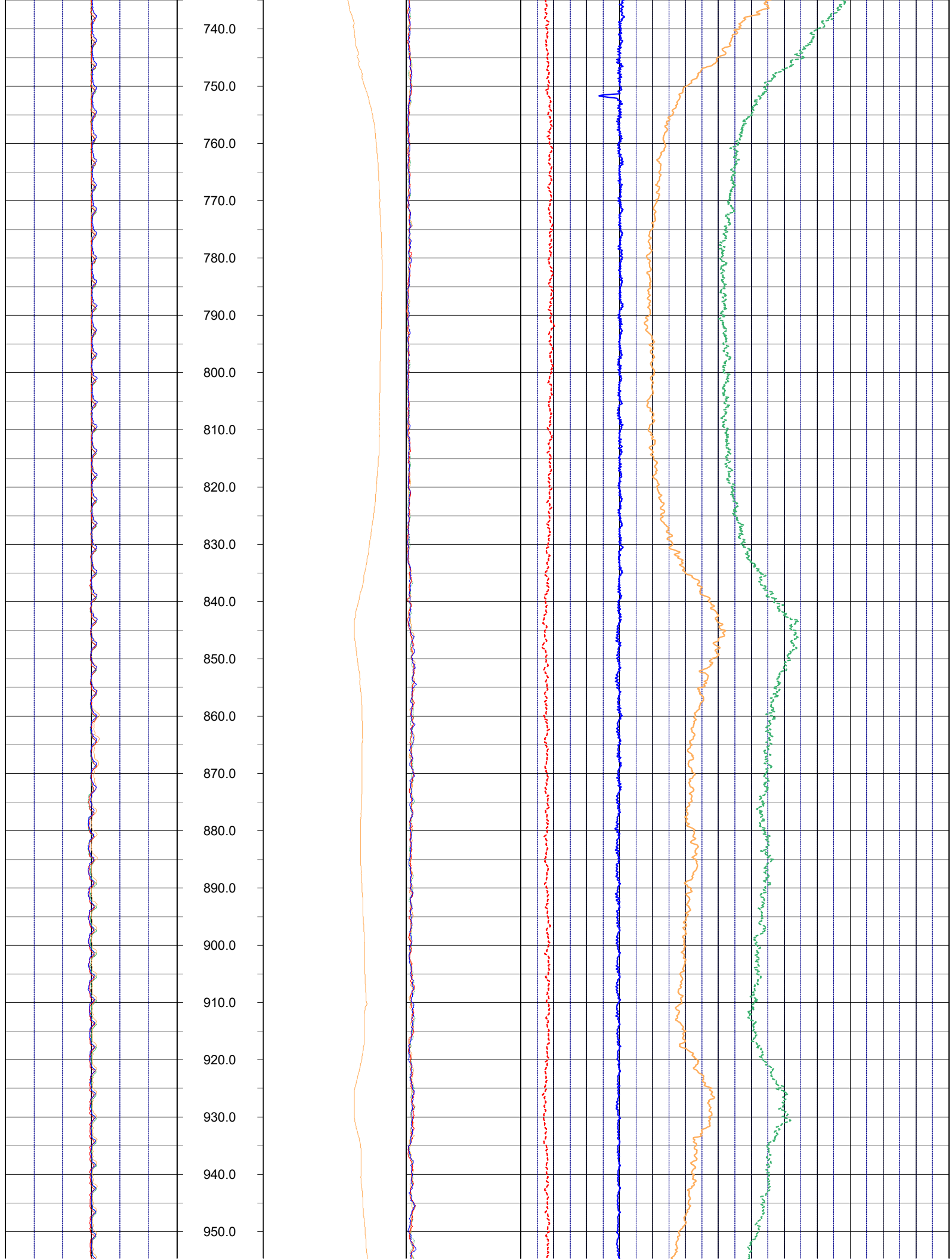
PROJECT NOTES:
 -The spinner rate curves deflect to the positive direction with increasing flow from the well.
 -The spinner rate curves are not corrected for borehole diameter.
 -The well flowed naturally for dynamic conditions.

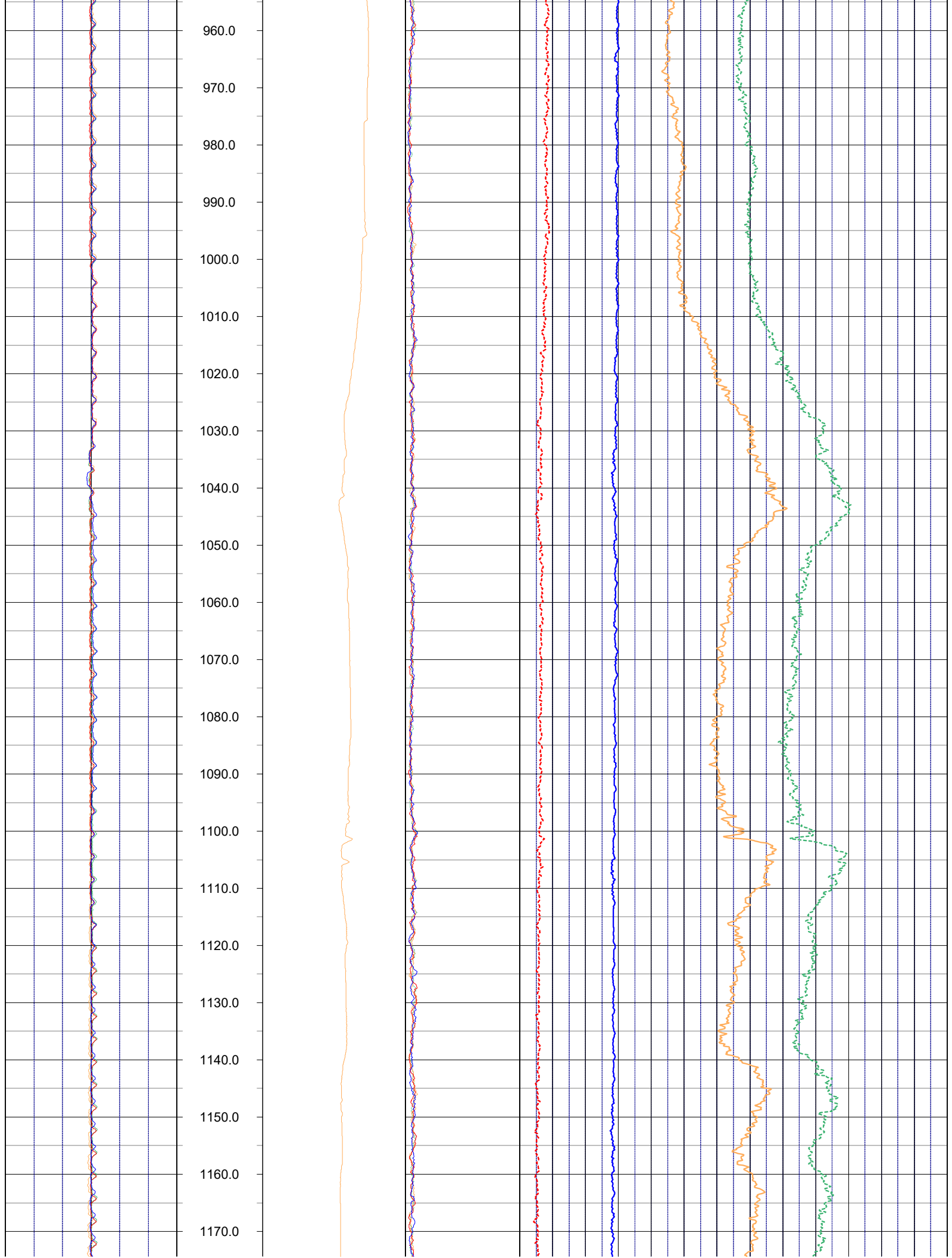
FLOWMETER LOG CODES

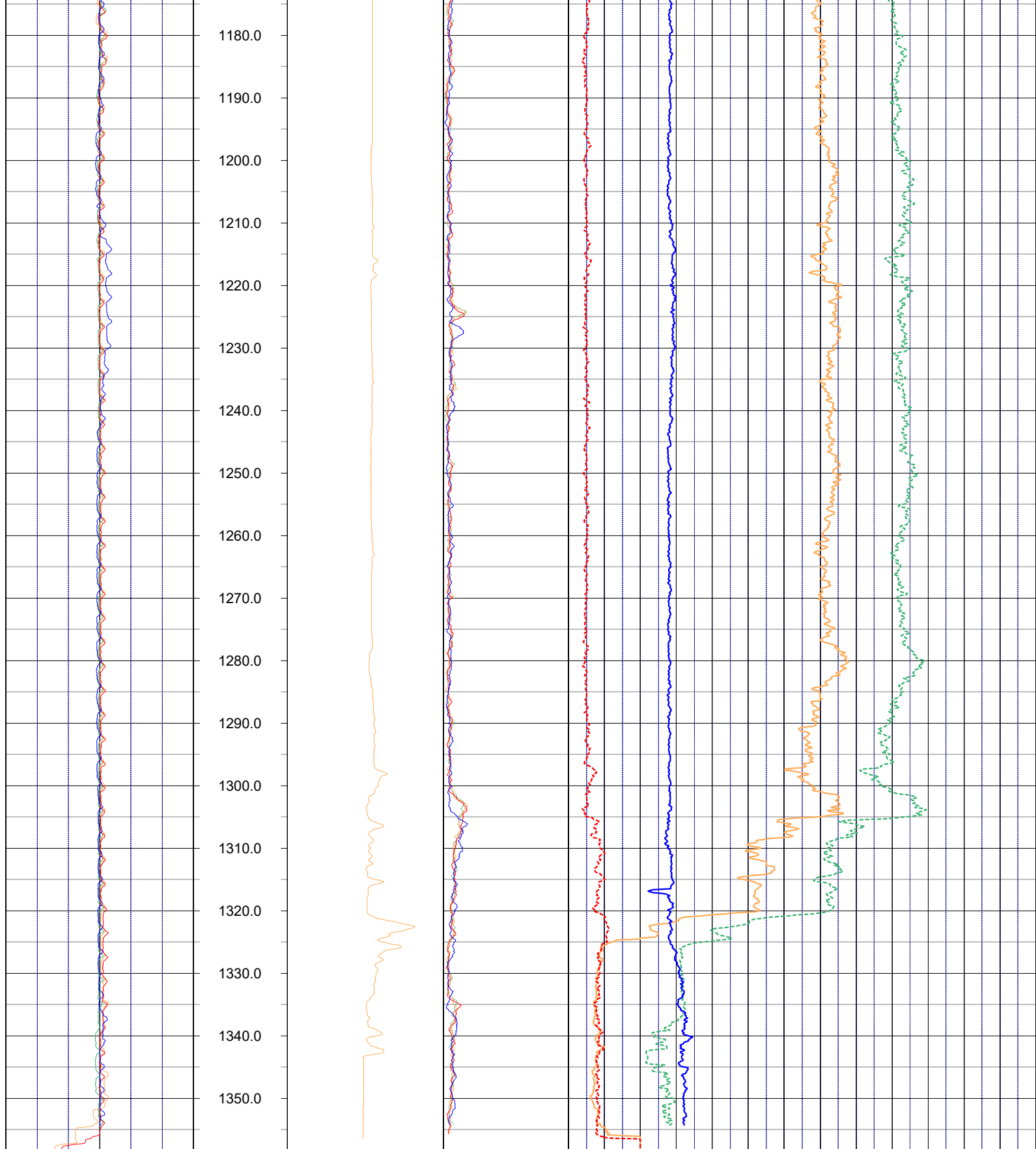
down static spinner rate	FSD	down static line speed	LSSD	natural gamma (w/annot.)	GAMM
up static spinner rate	UTS	up static line speed	LSSU	caliper	CAL
down dynamic spinner rate	DYND	down dynamic line speed	LSDD	repeat designation	R
up dynamic spinner rate	DYNU	up dynamic line speed	LSDU	percent flow	PFLO
static station spinner rate	FSU	dynamic station spinner rate	FSP	GPM flow	GPMFLO











0	ft/min	60	0	CPS	500	-1000	RPM	5500	
0	LSSD	ft/min	60	DS GAMM	FSD				
0	LSSU	ft/min	60	0	CPS	500	-1000	RPM	5500
0	LSDU	ft/min	60	US GAMM	UTS				
0	LSDD	ft/min	60	0	CPS	500	-1000	RPM	5500
0	LSSU	ft/min	60	CAL	UD GAMM	DYNU			
0	LSDU	ft/min	60	0	CPS	500	-1000	RPM	5500
0	LSDD	ft/min	60	COMMENTS	DD GAMM	DYND			

1in:20ft
Depth

NOTES:

While due care has been exercised in the performance of these measurements and observations, in accordance with methodologies utilized by the general practitioner, RMLBAKER LLC can make no representations, warranties, or guarantees with respect to latent or concealed conditions that may exist, which may be beyond the detection capabilities of the methodologies used, or that may extend beyond the areas and depths surveyed.

The geophysical well logs show subsurface conditions as they existed at the dates and locations shown, and it is not warranted that they are representative of subsurface conditions at other locations and times. If, at any time, different subsurface conditions from those observed are determined to be present, we must be advised and allowed to review and revise our observations if necessary.

Florida Geology Business Licenced by PG2186

END OF LOG
